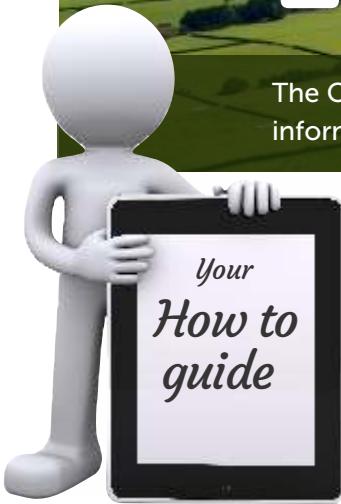




Local Maps

The Councils new interactive map portal designed to provide fast access to mapped information. The map portal can be viewed on smartphones or tablets as well as laptops.



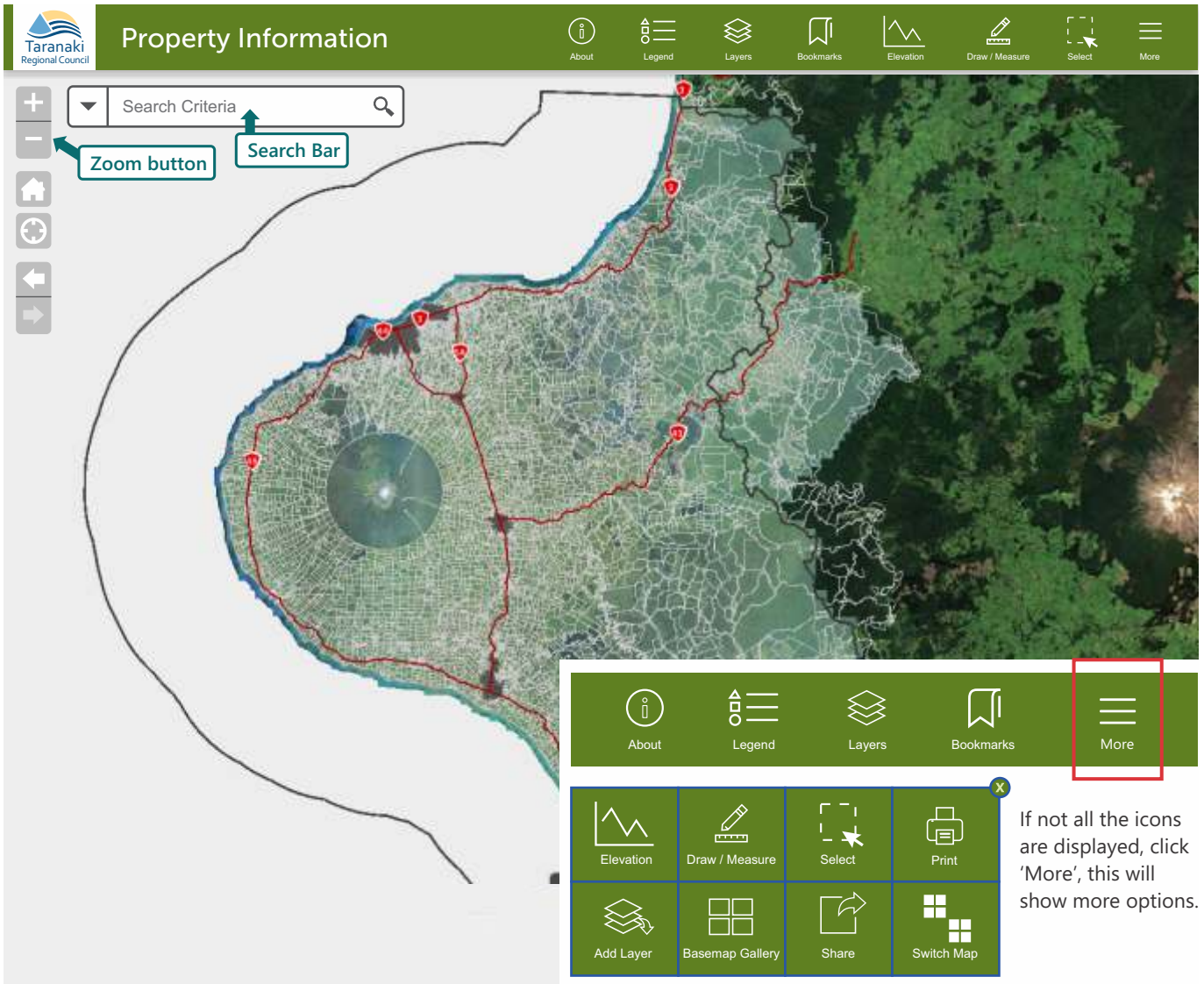
This guide shows you how to use the online map portal to:

- Select map category
- Find information about a feature
- Navigate around the map
- Turn layers on and off
- Zoom in or out of the map
- Zoom to a location using GPS coordinates
- Display information about a particular site
- Print a map
- Search for a feature

maps.trc.govt.nz/LocalMapsGallery/

You can use the site as a visitor or sign in with ArcGIS, Facebook or Google. Signing in allows you to save your maps & share them with others.

Select your map by clicking on the icon.

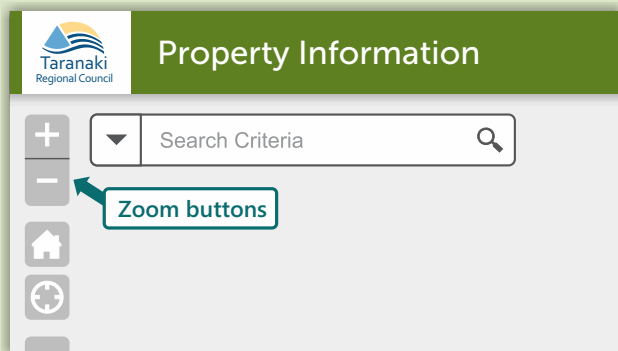


Navigating the map

1. To move around the map click on the map and drag.

Zooming

1. Roll the scroll wheel on your mouse - forward to zoom in and backwards to zoom out.
2. Or you can click on the plus and minus buttons at the top left of the screen.

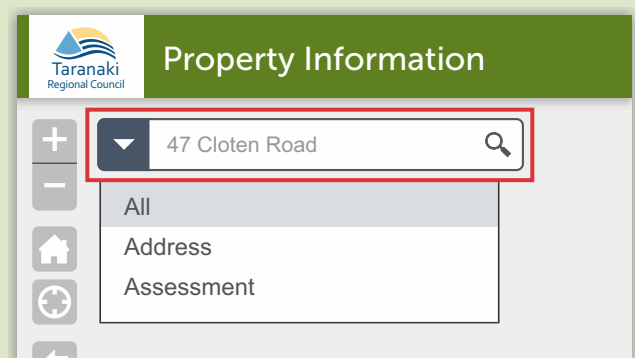


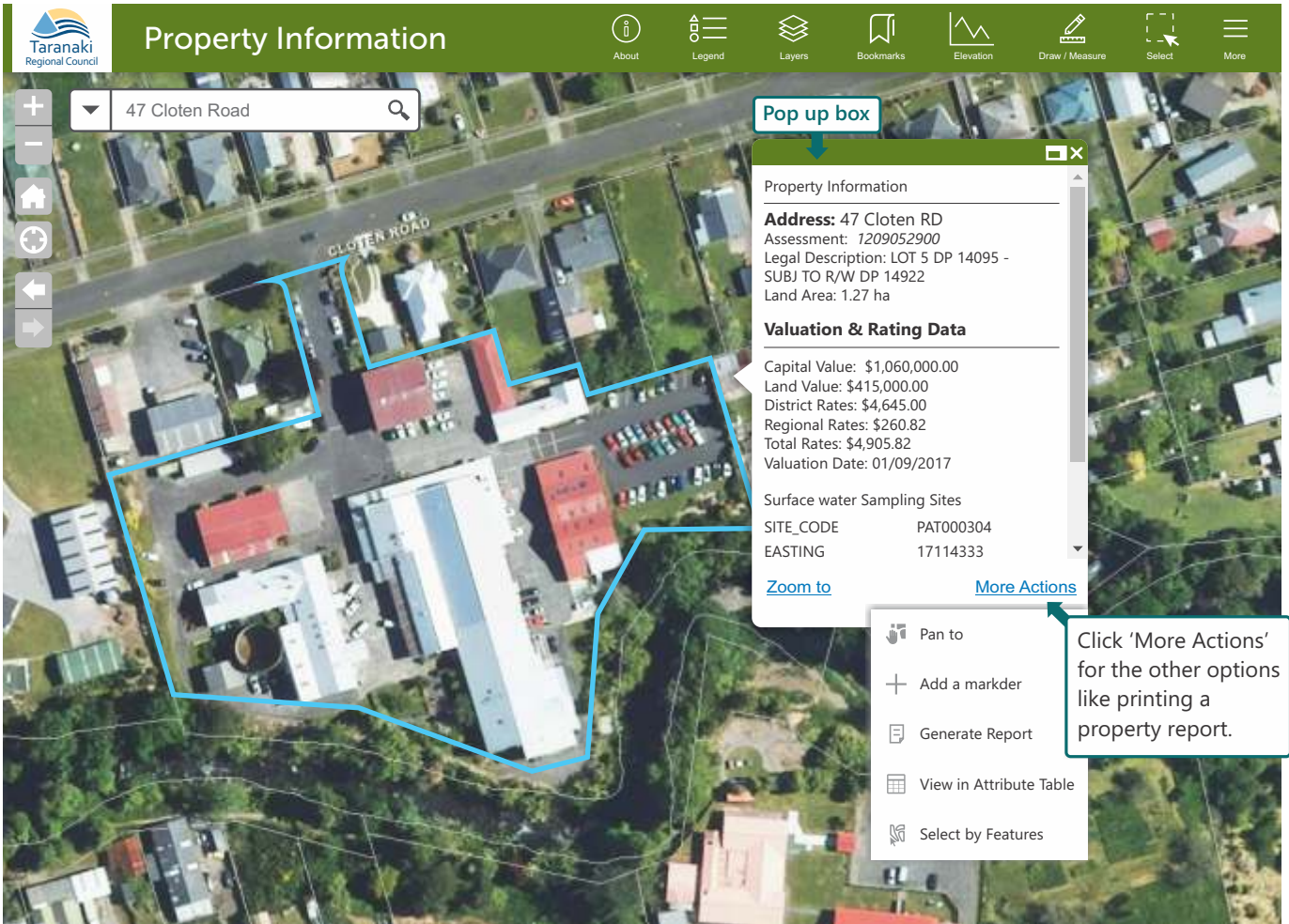
Information

1. For information about a feature, click on the feature and a 'pop up box' will display.

Search for a feature

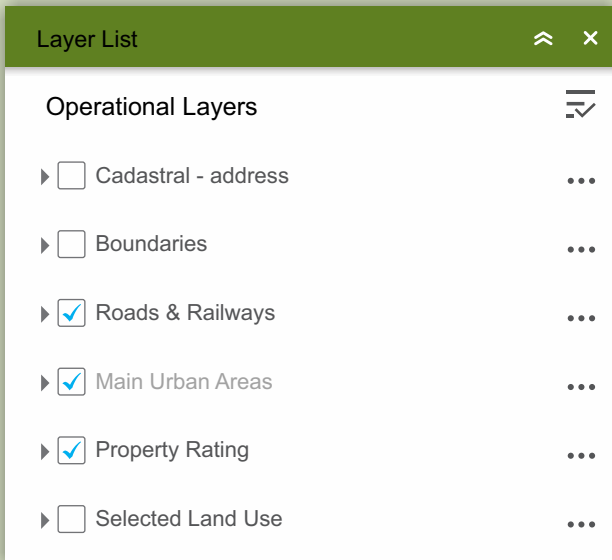
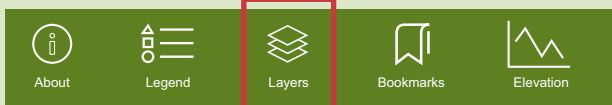
1. Click the small triangle next to the search bar to select the type of feature you are searching for.
2. Enter the name of the feature or street in the search bar - this example is '47 Cloten Road'.
3. A blue outline will highlight your search result.
4. When you click on your search result site a 'pop up box' will display with information about that site.





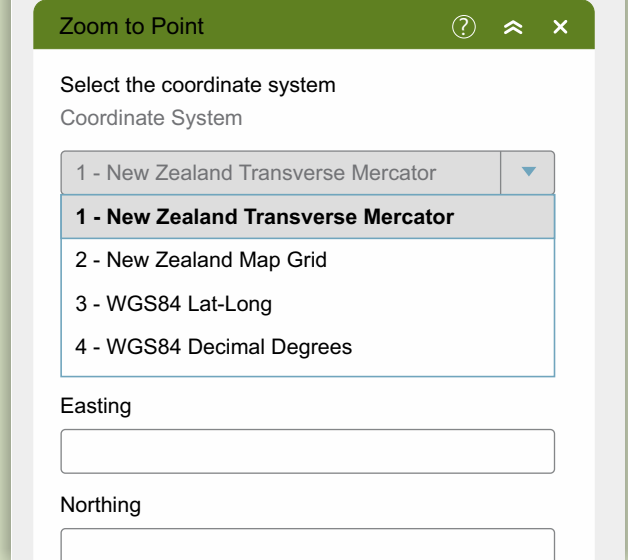
Turn layers on and off

1. Click on the 'Layers' icon.
2. Click on the box next to the layer you want to turn on - a tick will appear.
3. Click on the small triangle, it will open the contents of the layer.



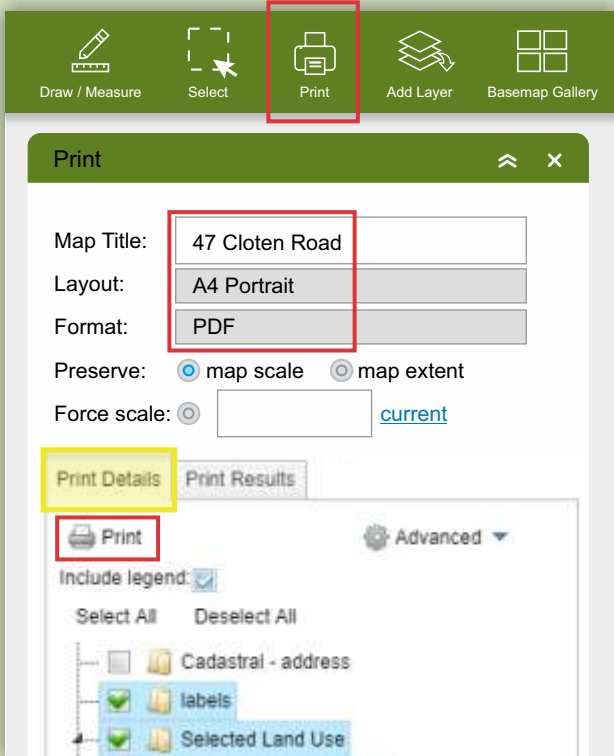
Zoom to point

1. Click on the 'Zoom to Point' icon if you have GPS coordinates for your location.
2. Select the appropriate 'Coordinate System'.
3. Enter your coordinates and click 'go' or click on the map to retrieve your coordinates.

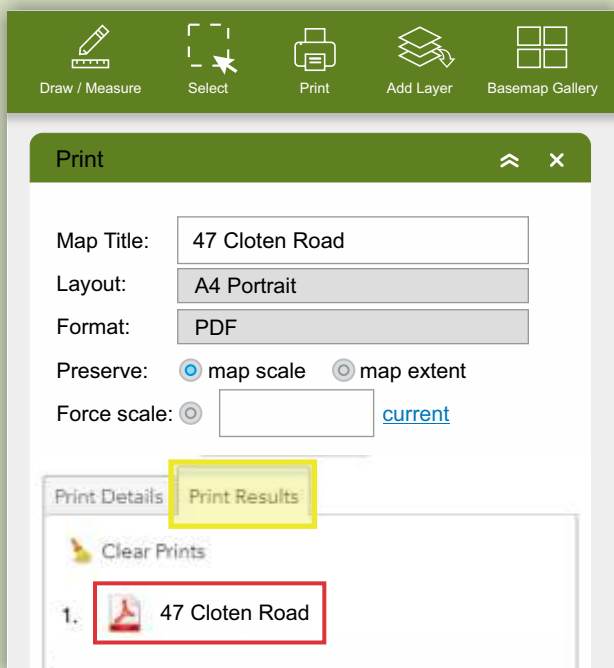


Print map

1. Click on the Print icon.
2. Choose a name for the file - example is 'My surf spot'.
3. Pick a size and orientation.
4. Choose a format - example is a PDF.
5. In the 'Print Details' tab, click print.



6. This will create a picture of the map.
7. In the 'Print Results' tab, click on the name of your print job and it will open a new window.
8. From there you can print your map. You can also download the file to your computer.



Measure area or distance

1. Click on Draw/Measure.
2. Select Line tool for length, or polygon tool for area.
3. Select Measure Details tab.
4. Select desired units.
5. Draw the line or area required.
6. Double click to complete.
7. Measurements will show on the map.

