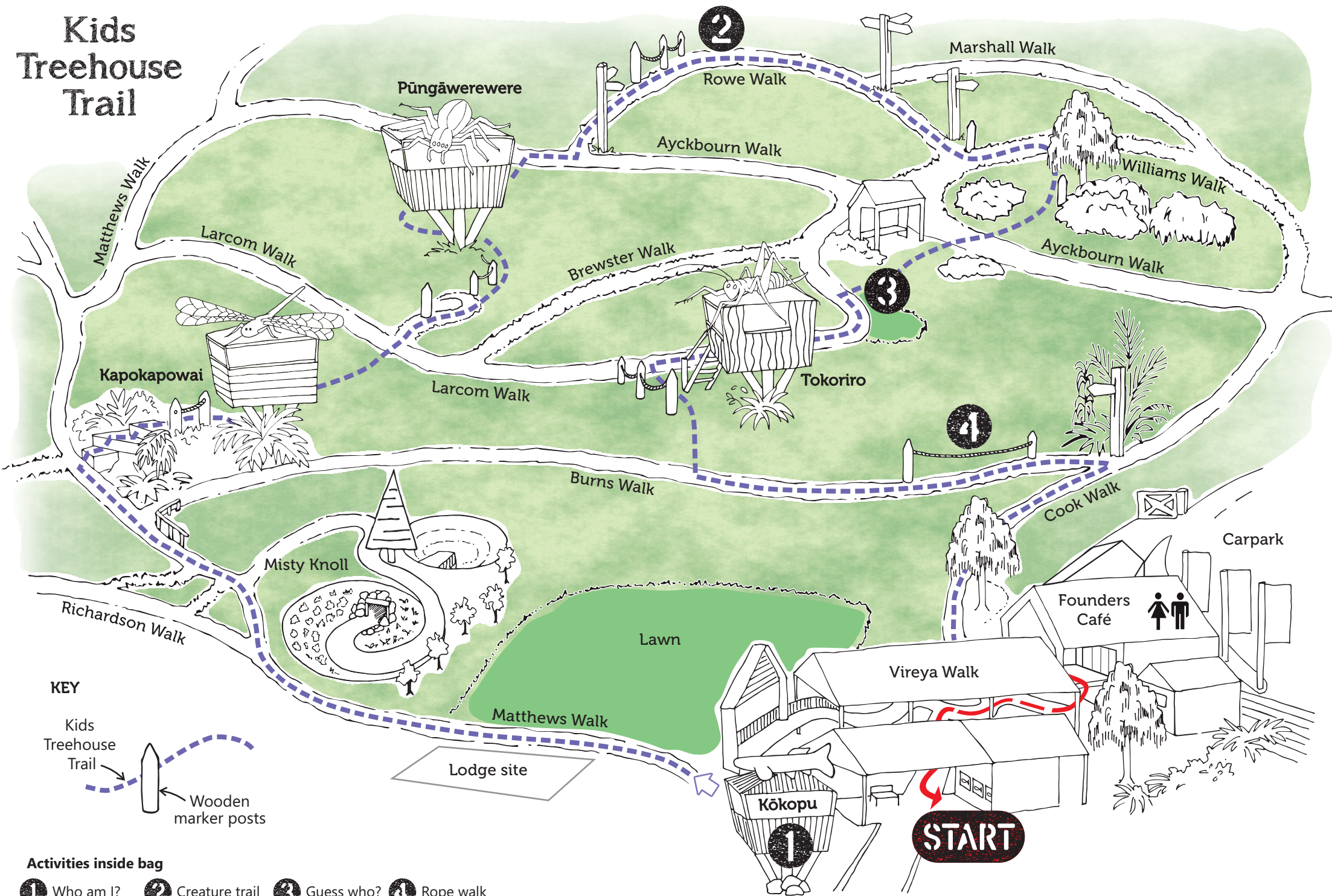


Kids Treehouse Trail



Welcome to the Pukeiti Kids Treehouse Trail


You can complete the Kids Treehouse Trail by using this map or you can use an Activity bag to do activities along the trail. The bags are in the Founders Café.

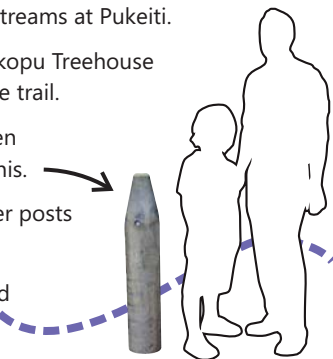
If there are no Activity bags available you can wait for one to be returned or just use the map and follow the marker posts around the garden. Look for hidden facts and questions at each Treehouse.

Activity bag

- Inside you will find instructions and props for great activities which are designed for kids between about 4 and 12 years old and take around 10 minutes each.
- At each of the marked numbers on the map, take out the corresponding bag from your Activity bag.

To find the start point go past the Founders Café and along the Vireya (zig-zag) walk, turn left off the walk to a small landing by the fish tanks.

- Now that you're at the fish tanks, see if you can spot at least one fish in each of the tanks. These are all native fish which live in the streams at Pukeiti.
- Then move on to the Kōkopu Treehouse and begin the Kids Treehouse trail.
- The trail is marked by wooden marker posts that look like this.
- Use your map and the marker posts to guide you.
- Look out for hidden facts and questions in the treehouses along the way. 



Have fun!

As you begin the trail, think about:

- What are some of the creatures that might live at Pukeiti?
- If you were an animal living at Pukeiti, where would you live? What would you eat? Who would your friends be?
- Take a minute to see what sights, smells and sounds you recognise (birds, insects, flowers or people)?
- As you explore Pukeiti, use all your senses to try to find signs of the different creatures that live here.

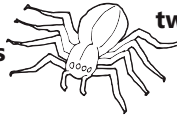
Treehouse hidden facts & questions




Look for them inside the treehouses

at the 
Kōkopu Treehouse:
two facts or questions

at the Pūngāwerewere
Treehouse: three
facts or questions



at the 
Kapokapowai Treehouse:
four facts or questions

at the Tokoriro Treehouse:
two facts or questions



After you finish:

Once you have completed Activity 4, please return the bag to the Rainforest Centre. Please make sure all instruction cards, the 10 plastic creatures and the blindfolds are in their correct bags.



*Thank you for visiting Pukeiti
we look forward to seeing you again soon.*



PRINTED ON RECYCLED PAPER

