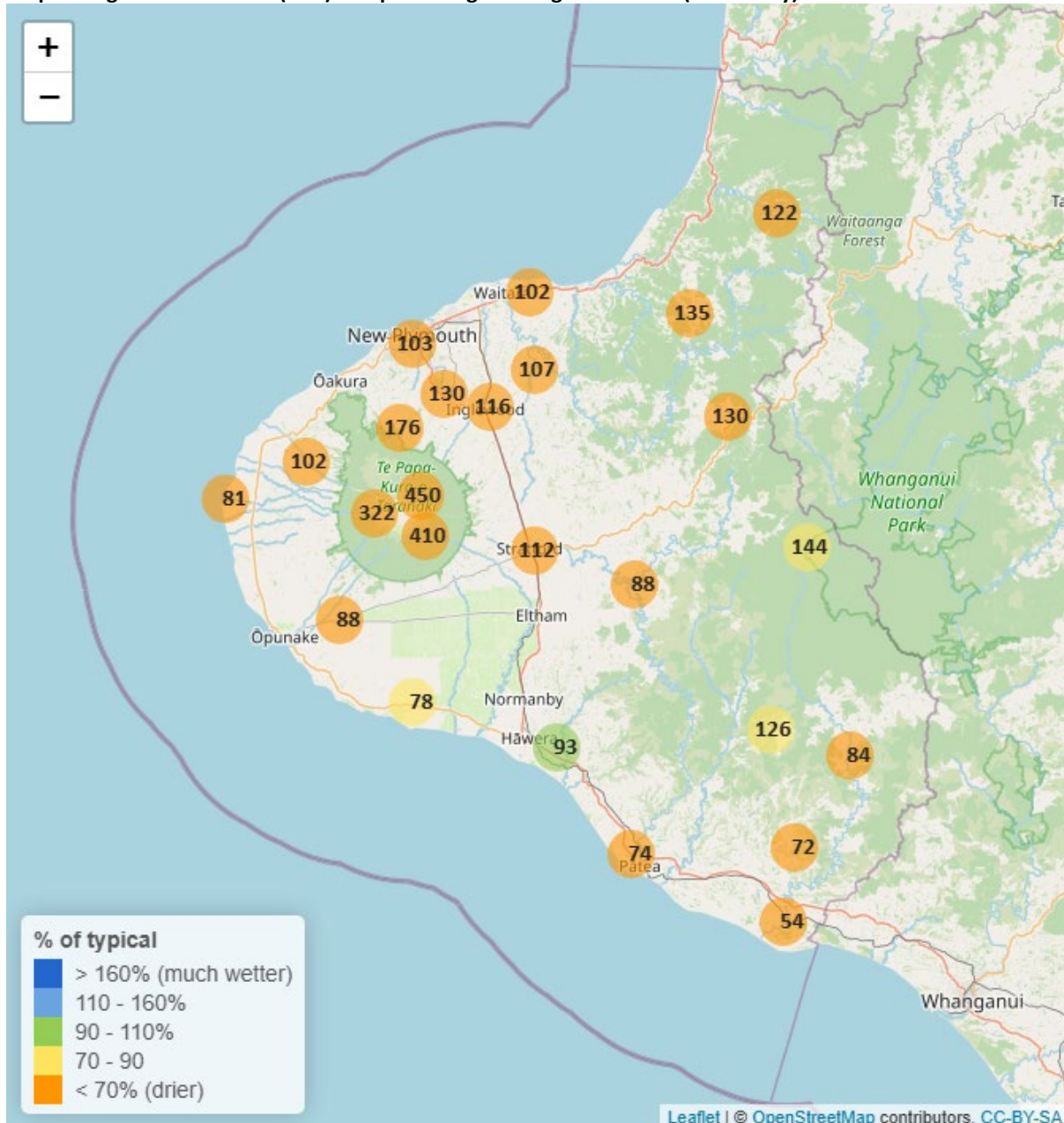


Taranaki Regional Council Monthly Rainfall and Environmental Data Report for August 2025

Note: The data presented here is provisional data only and may change as a result of quality control at a later date.

1. Rainfall

Map 1: August total rainfall (mm) and percentage of long-term mean (colour key).



Map 1a. Total rainfall 1 January to end August (mm) and percentage of long-term mean (colour key).

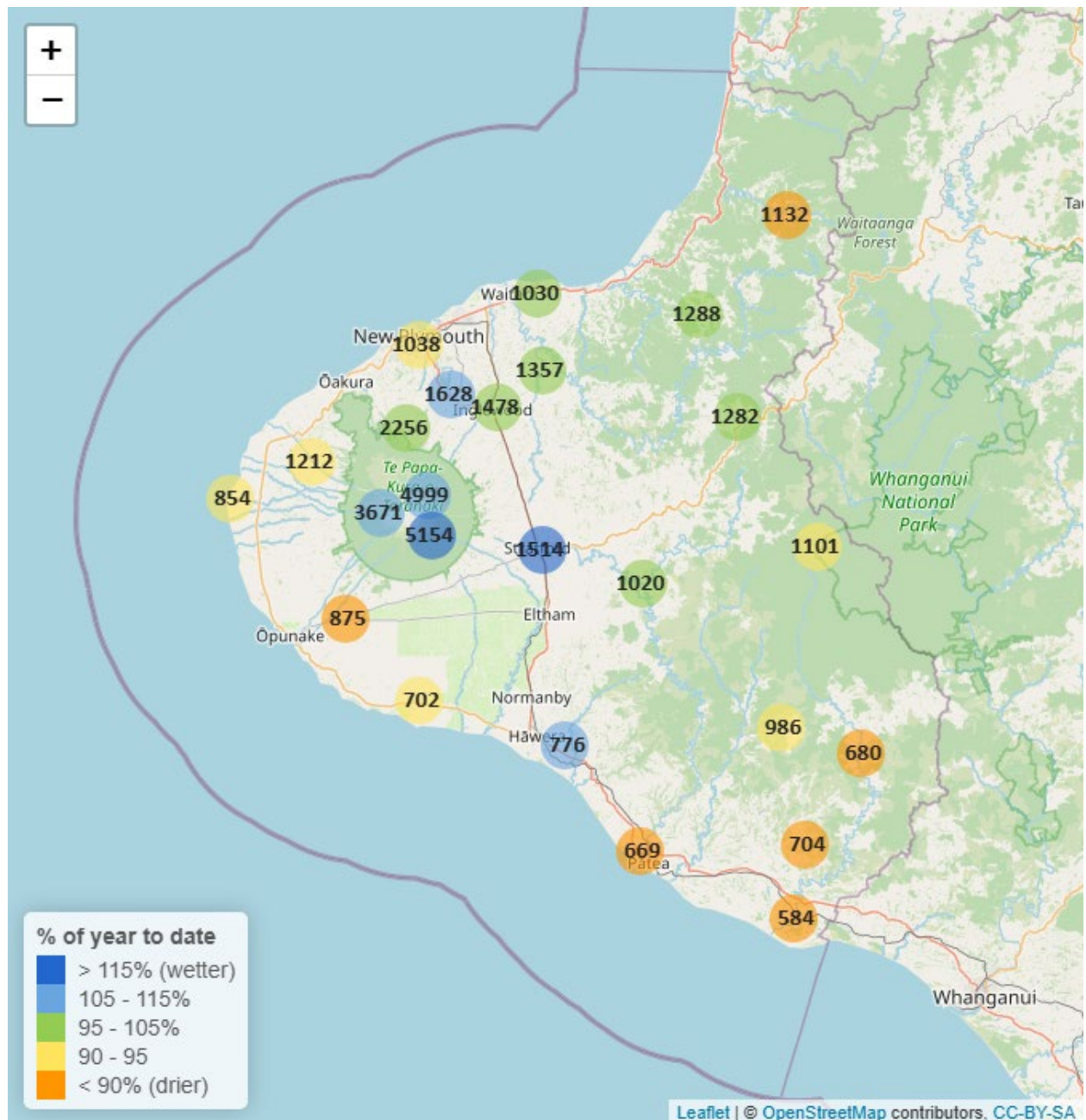


Table 1: Rainfall August and year-to-date totals for rain gauge sites in Taranaki.

	August			Year to Date			
Rain gauge	# days with rain	Total rain (mm)	% of typical month	Total to date (mm)	% of typical year to date	% of typical full year	Records Began
North Taranaki at Camphouse	16	449.5	61.9	4998.9	109.2	70.1	1996
Dawson Falls	15	410.5	59.9	5153.5	121.1	80.9	1999
Kapoaiaia at Kahui Hut	16	322.5	60.4	3671.0	106.9	70.3	2006
Mangorei Upper at Forest Hill	11	175.5	45.8	2256.0	95.0	62.2	2018
Waiwhakaiho at Hillsborough	9	97.5	51.2	1115.5	90.5	61.9	2013
Brooklands Zoo at New Plymouth	10	103.0	60.5	1037.8	93.8	65.5	2012
Motunui M39 at Weston W3	8	101.8	65.9	1029.8	97.7	65.4	1999
Waiwhakaiho at Egmont Village	10	129.5	59.2	1628.5	106.5	68.1	1996
Manganui at Everett Park	9	107.0	55.1	1357.0	102.3	65.0	1996
Inglewood at Oxidation Ponds	10	115.5	52.6	1478.0	98.7	63.1	2000
Stony at Mangatete Bridge	9	101.5	51.7	1212.5	92.2	61.0	2004
Kapoaiaia at Lighthouse	9	81.4	61.2	854.4	94.9	63.9	1999
Taungatara at Eltham Rd	11	88.5	58.7	875.0	85.3	55.9	2005
Kaupokonui at Glenn Rd	12	78.0	73.9	702.0	92.1	60.6	1998
Patea at Stratford	12	111.5	52.6	1513.5	115.1	76.6	1999
Mangaehu at Bridge	10	88.0	55.1	1019.5	97.8	64.4	1999
Kotare at OSullivans	8	121.5	63.1	1131.5	85.2	52.7	1998
Uruti at Kaka Rd	11	135.0	67.6	1288.0	95.0	58.4	1996
Pohokura Saddle	12	130.5	66.7	1282.0	103.0	64.5	1996
Omaru at Charlies	10	143.5	76.0	1101.0	91.5	60.4	2006
Omahine at Moana Trig	13	126.5	78.3	986.0	90.2	58.9	2007

	August			Year to Date			
Rain gauge	# days with rain	Total rain (mm)	% of typical month	Total to date (mm)	% of typical year to date	% of typical full year	Records Began
Waitotara at Rimunui Station	10	83.5	65.1	680.5	77.8	49.8	1996
Waitotara at Ngutuwera	11	72.5	64.2	703.5	86.4	55.1	1999
Tawhiti at Duffys	11	93.0	92.4	776.0	109.1	70.4	1996
Patea at Bore 3	13	73.8	63.6	668.6	86.5	57.1	2006
Waitotara at Hawken Rd	10	53.6	52.5	584.0	75.4	50.8	2016

Notes: Low and high values in tables refer to the upper and lower 5th percentiles of the historic record for each site (except for wind gust and soil moisture which are the upper and lower 1st percentiles). Percentile values give a better indication of the general upper and lower range of the historic data against which to compare the current month. Start year (records began) shows the length of data used to compute historic highs, lows, and "typical values". Sites with a longer data record will generally provide a more reliable comparison to values in the current year.

1.2 Long-term data patterns

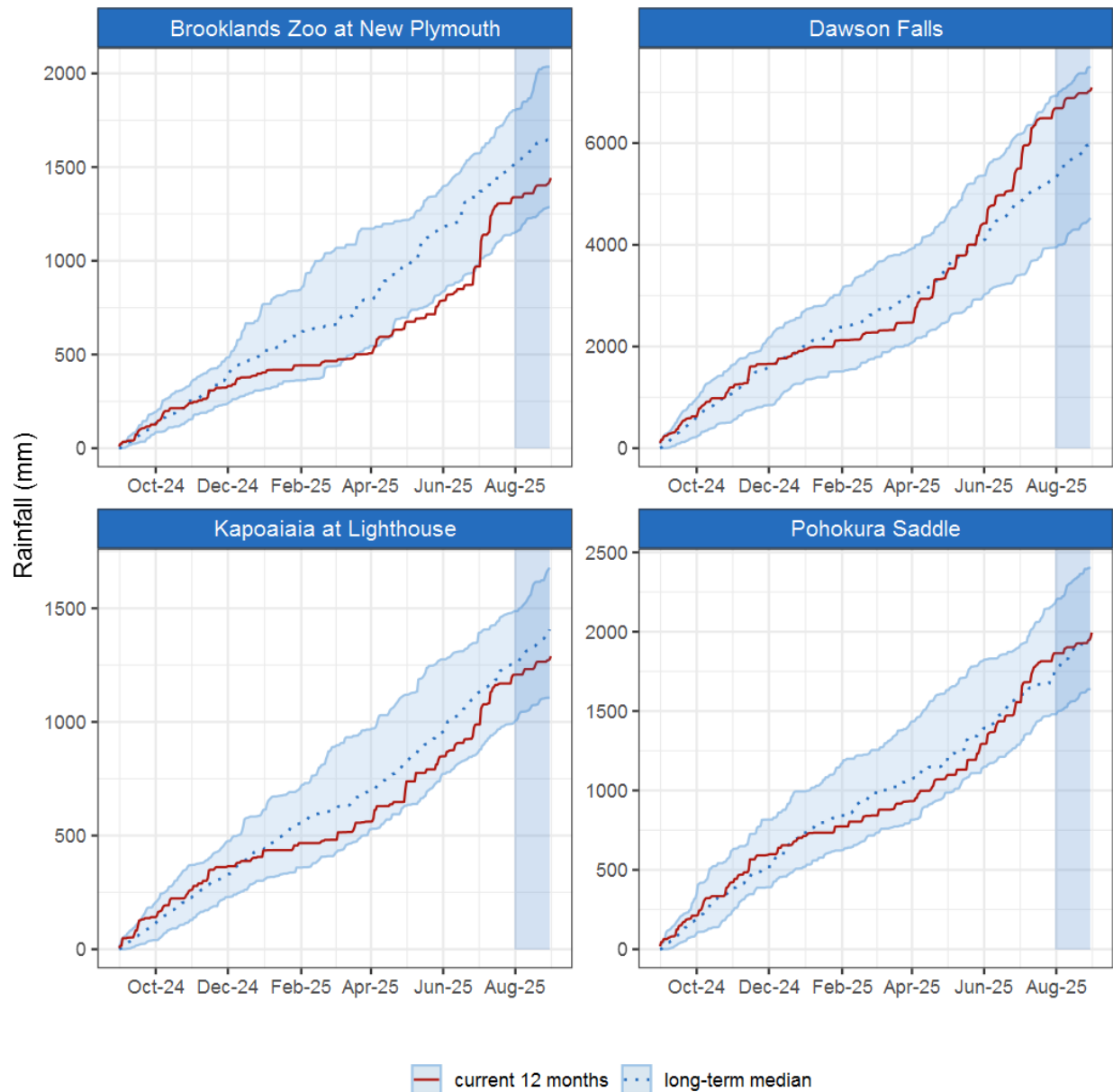


Figure 1.1: This year's and last year's data set in context of historic record at selected rain gauge sites in Taranaki.

1.3 Monthly Bar Charts

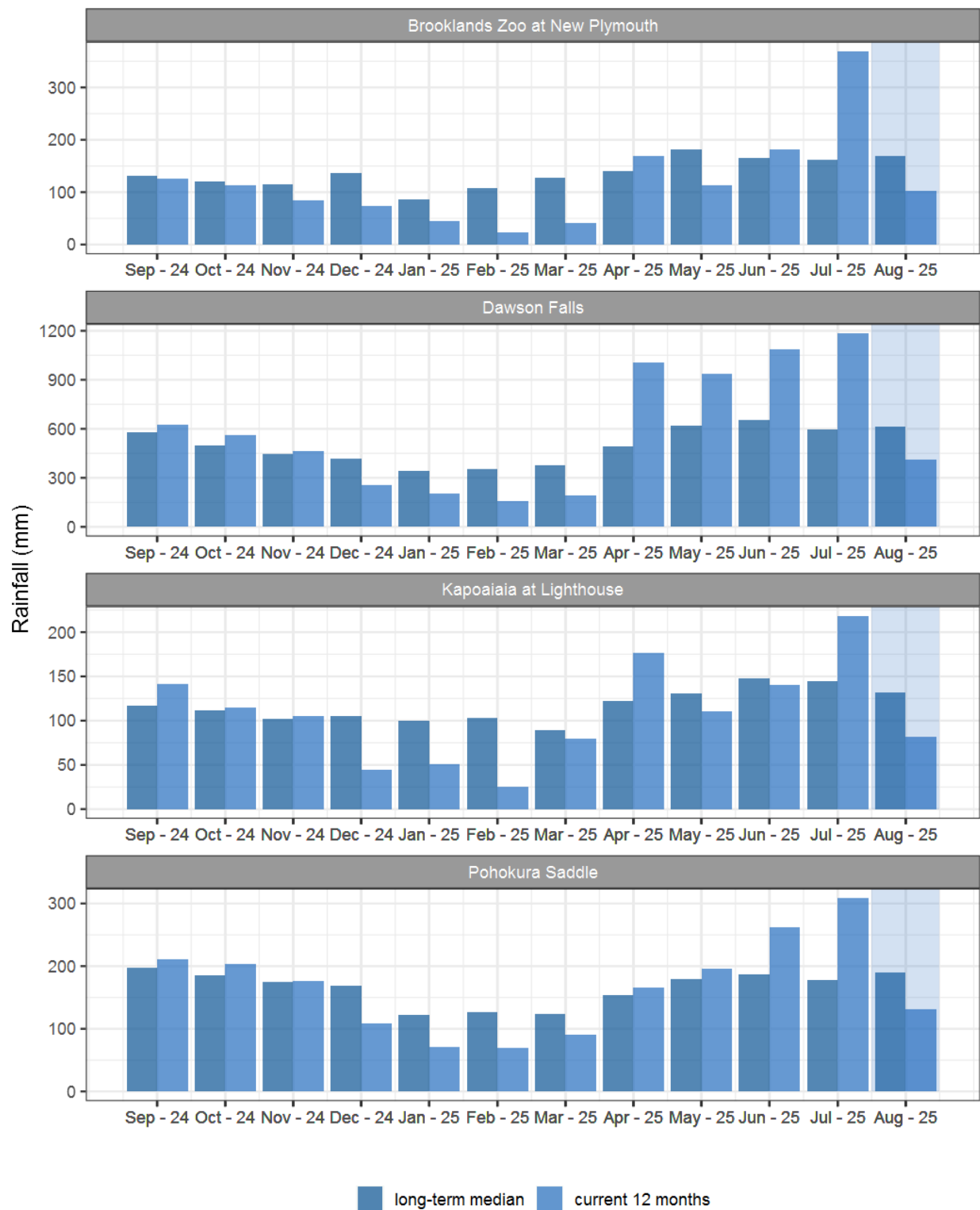


Figure 1.2: Monthly rainfall totals for this month and the mean of all previously recorded months.

2. River Flow

Map 2: August mean river flows (m³/sec), with difference as percentage of long-term mean.

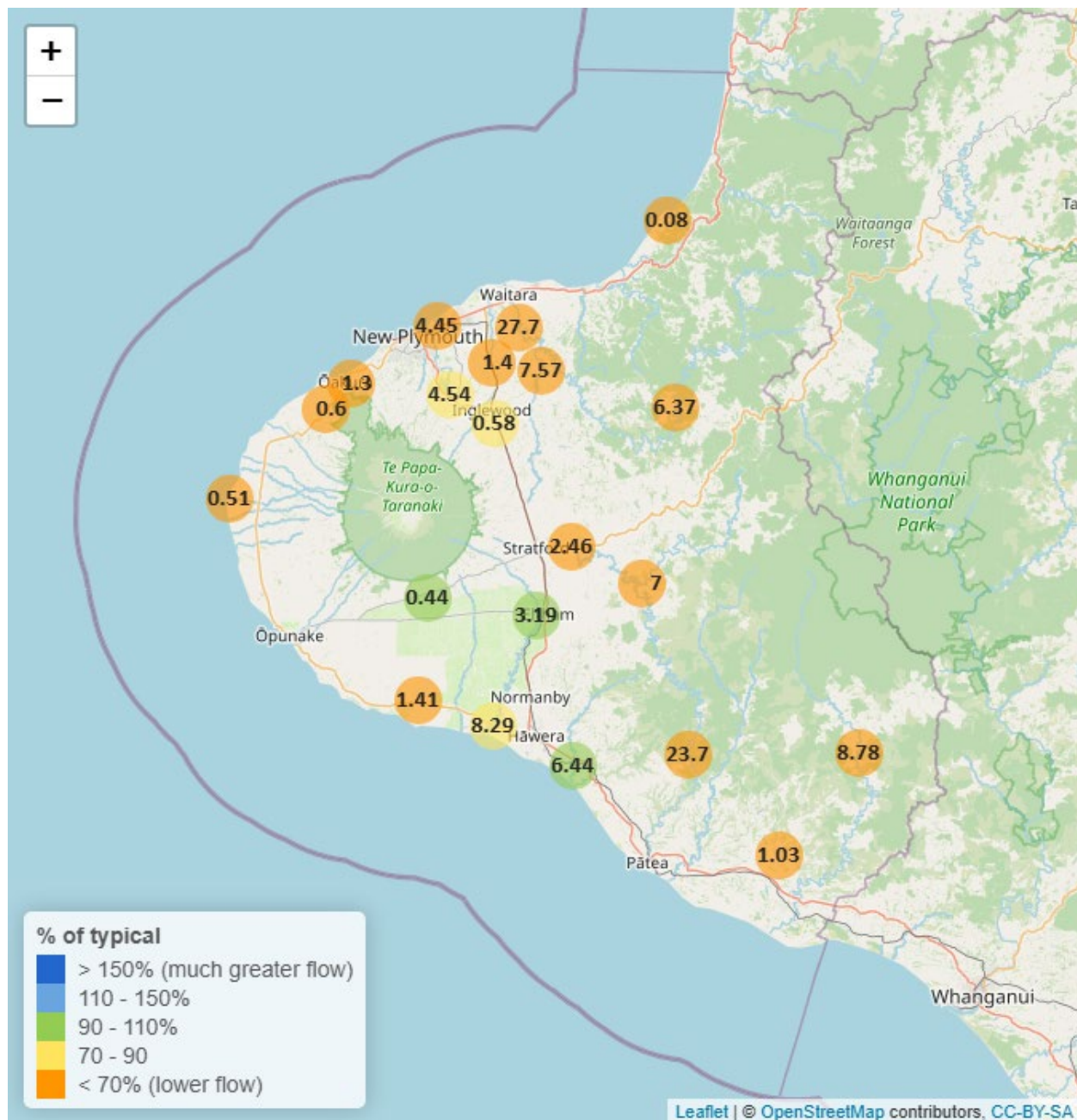


Table 2: Summary of high, low and mean flow for August and for August in all preceding years of record.

August 2025 - Recorded flows (m3/sec)								
	Highs		Lows		Mean			
River and Site	current month	historic	current month	historic	current month	historic	August maximum	Data years
Kapoaiaia at Lighthouse	1.08	3.69	0.39	0.47	0.51	0.98	3.08	39
Kaupokonui at Glenn Rd	3.99	10.68	0.93	1.56	1.41	3.37	22.71	43
Mangaehu at Bridge	19.55	51.93	5.31	4.43	7.00	11.51	51.29	47
Manganui at Everett Park	16.74	70.52	5.57	6.01	7.57	13.39	91.62	34
Mangawheroiti Above Intake W.W	0.85	1.30	0.34	0.21	0.44	0.43	4.21	12
Moumahaki at Johnston Rd	4.96	7.53	0.75	0.70	1.03	2.08	11.97	7
Ngatoro at SH3	1.49	4.55	0.45	0.39	0.58	0.79	14.24	36
Oakura at Victoria Rd	3.24	12.74	0.98	1.06	1.30	2.40	24.24	6
Patea at McColls Bridge	47.99	106.63	3.04	4.12	23.70	46.58	54.03	35
Patea at Skinner Rd	4.72	17.66	1.86	2.00	2.46	5.10	27.87	47
Tangahoe below Railway Bridge	13.59	21.08	5.07	2.41	6.44	6.95	20.27	7
Timaru at Tataraimaka	1.51	7.37	0.42	0.62	0.60	1.48	10.71	12
Waikaramarama at Bridge	0.33	1.14	0.05	0.03	0.08	0.12	2.46	7
Waingongoro at Eltham Rd	4.76	10.45	2.64	1.24	3.19	3.08	19.04	50
Waingongoro at SH45	11.51	25.98	6.77	4.28	8.29	9.99	24.76	44
Waiongana at SH3a	2.57	8.96	0.95	0.83	1.40	2.20	15.16	45
Waitara at Bertrand Rd	61.84	236.13	17.78	15.71	27.70	48.20	112.26	45
Waitara at Purangi Bridge	31.06	108.67	3.12	2.16	6.37	13.76	96.66	26
Waitotara at Rimunui Station	36.10	67.54	6.36	5.62	8.78	16.26	51.90	20
Waiwhakaiho at Egmont Village	10.52	25.72	3.89	2.55	4.54	5.06	74.74	45
Waiwhakaiho at Vickers Rd	10.79	50.46	2.65	2.37	4.45	8.18	93.00	5

2.2 Long-term data patterns

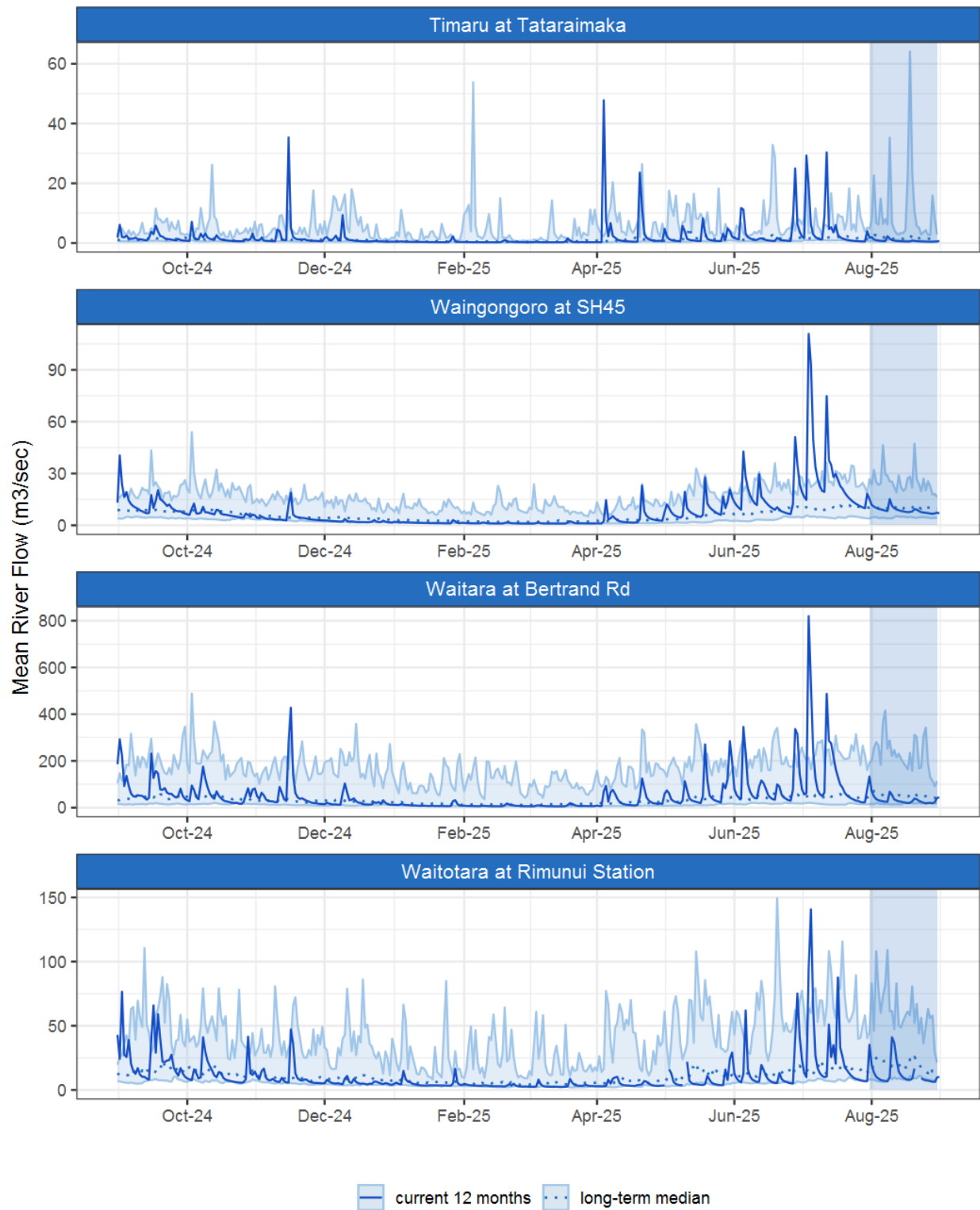


Figure 2.1: Running average river flows for selected sites, set in context of the historic record.

2.3 Monthly Bar Charts

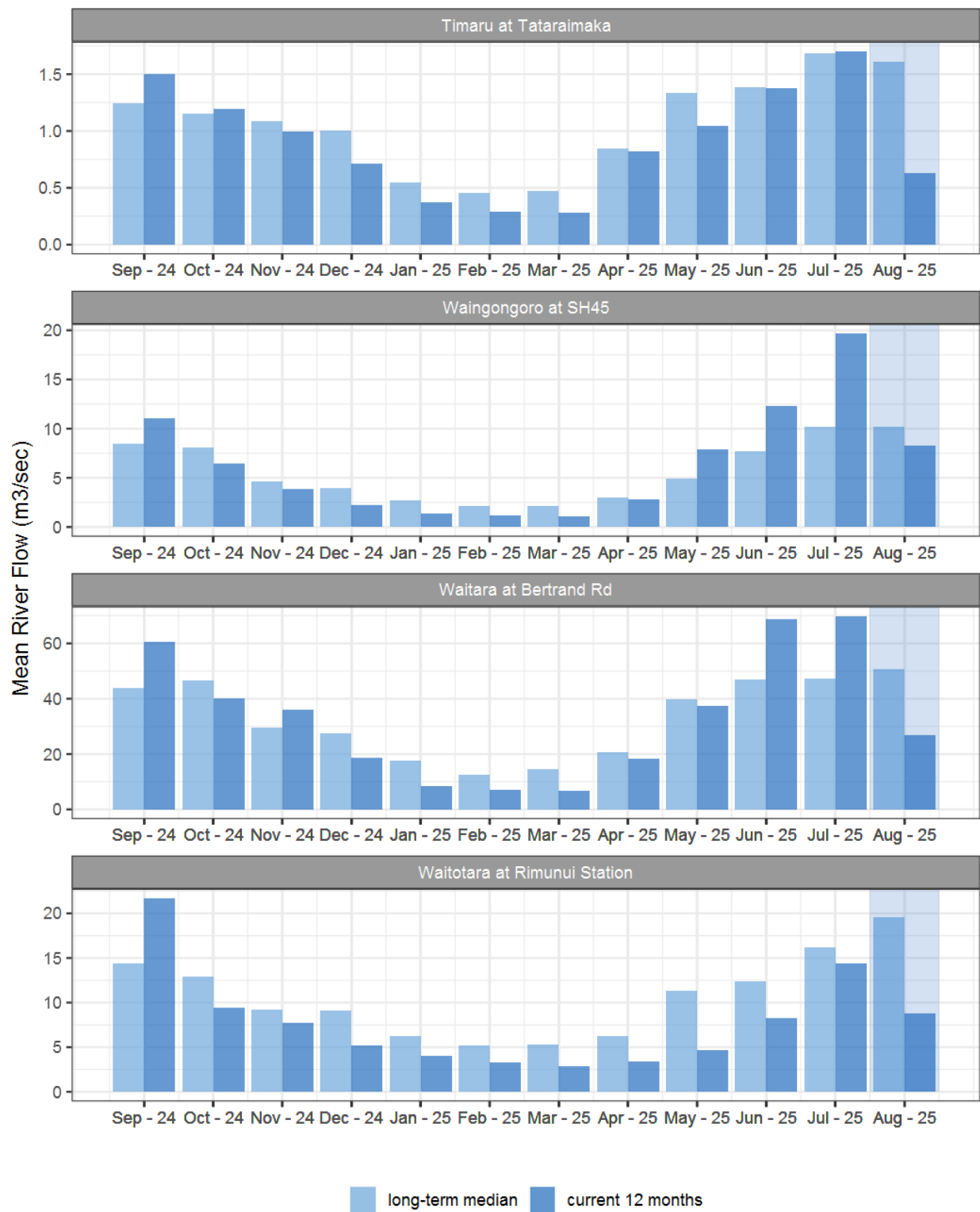


Figure 2.2: Monthly mean river flow for this month and the mean of all previously recorded months.

3. River Temperature

Map 3: August mean water temperature with difference to long-term mean (°C).

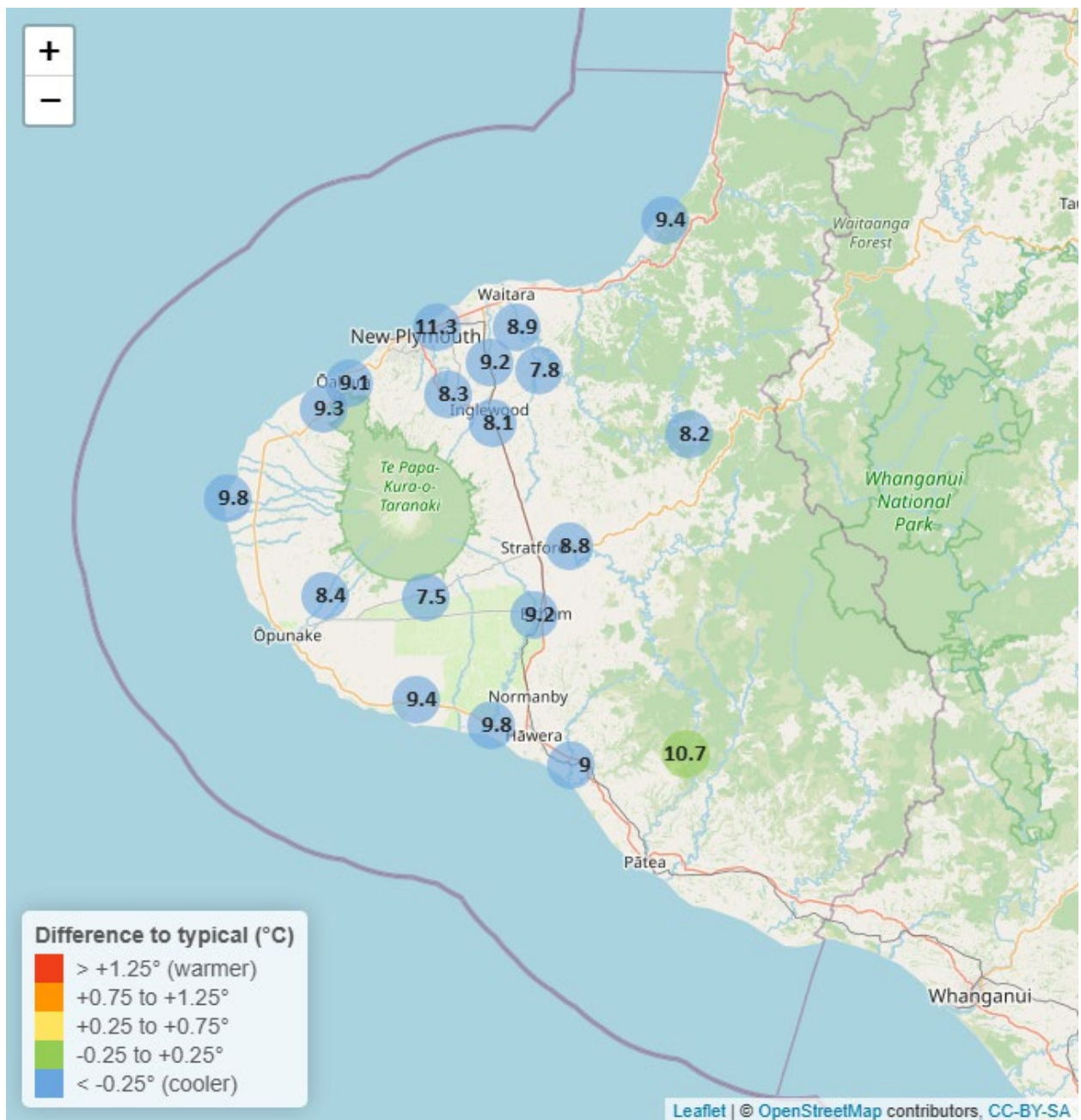


Table 3: Summary of high, low and mean river temperature for August and for August in all preceding years of record.

August 2025 - River Temperature (°C)								
	Highs		Lows		Mean			
River and Site	current month	historic	current month	historic	current month	historic	August maximum	Data years
Kapoaiaia at Lighthouse	12.48	13.03	7.72	7.95	9.85	10.82	14.18	27
Kaupokonui at Glenn Rd	12.28	12.19	7.51	7.51	9.44	9.96	13.97	33
Manganui at Everett Park	10.29	11.86	6.63	7.75	7.81	10.06	11.20	16
Mangaone 3 at Stub Rd	12.89	14.19	10.02	10.10	11.29	12.14	13.65	5
Mangawheroiti Above Intake W.W	8.75	9.63	6.36	6.40	7.46	8.13	9.81	12
Matau at Woolshed	9.81	11.89	6.48	7.20	8.24	9.79	10.57	8
Ngatoro at SH3	10.12	10.97	6.41	6.49	8.05	9.05	10.93	24
Oakura at Victoria Rd	11.32	12.18	7.43	8.21	9.08	10.19	12.59	6
Patea at McColls Bridge	11.41	11.49	9.72	9.66	10.65	10.44	11.99	11
Patea at Skinner Rd	10.53	11.50	7.43	7.80	8.81	9.90	11.94	21
Tangahoe below Railway Bridge	11.01	12.33	7.73	8.13	9.02	10.31	12.20	7
Timaru at Tataraimaka	11.31	12.35	7.59	8.38	9.30	10.40	12.46	10
Waiaua 2 at Barraclough Opua	11.58	12.03	6.14	6.73	8.41	9.43	13.36	6
Waikaramarama at Bridge	11.18	12.62	8.06	8.49	9.37	10.73	11.82	7
Waingongoro at Eltham Rd	10.61	11.64	7.88	8.04	9.16	10.00	11.57	20
Waingongoro at SH45	11.80	12.27	8.62	8.66	9.84	10.70	12.93	20
Waiongana at SH3a	11.29	12.12	7.41	8.06	9.17	10.27	12.16	14
Waitara at Bertrand Rd	10.92	11.87	8.05	8.23	8.95	10.16	11.39	35
Waiwhakaiho at Egmont Village	10.22	10.85	6.52	6.64	8.31	8.94	10.84	34

3.2 Long-term data patterns

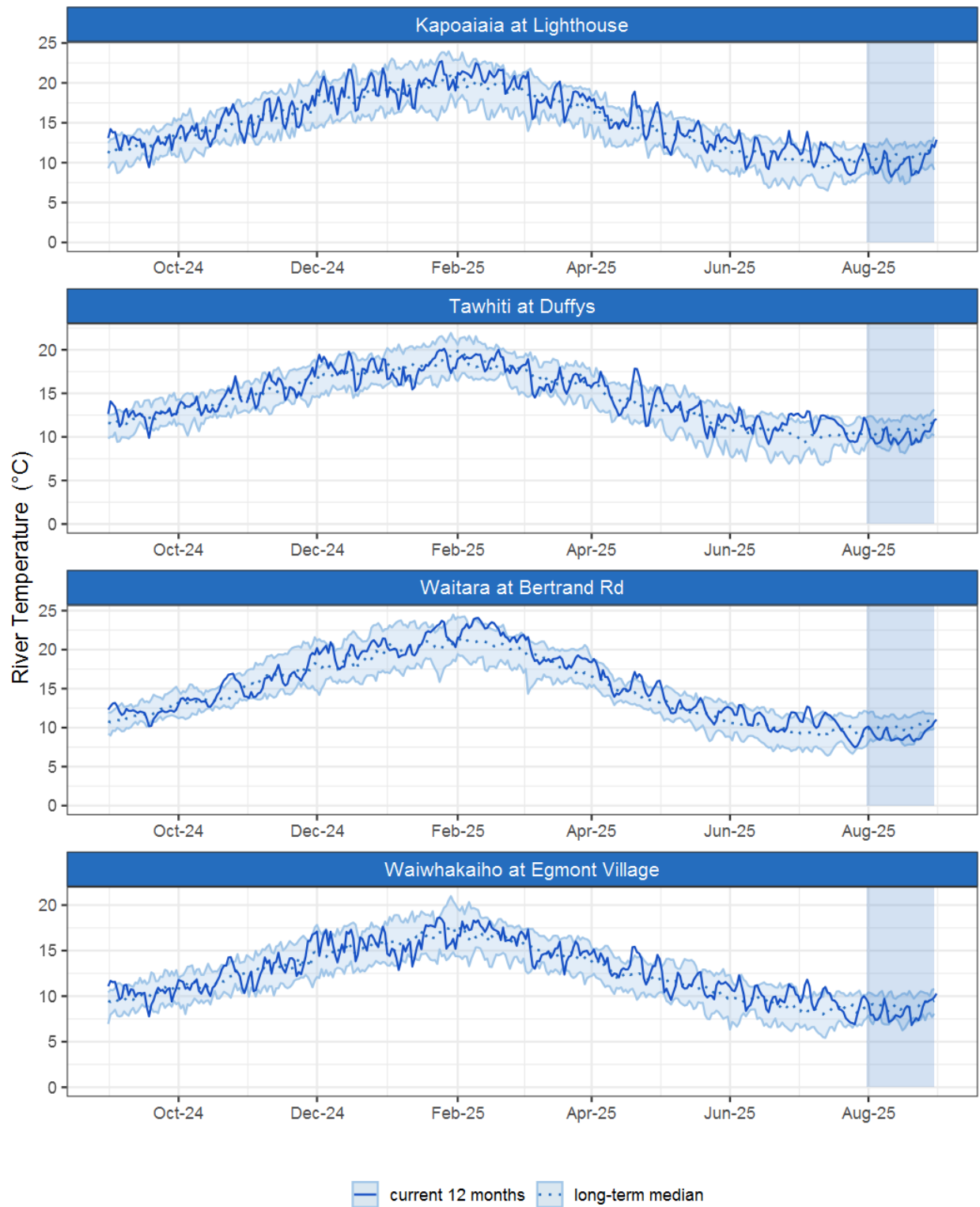


Figure 3.1: Running average river temperature for selected sites, set in context of the historic record.

3.3 Monthly Bar Charts

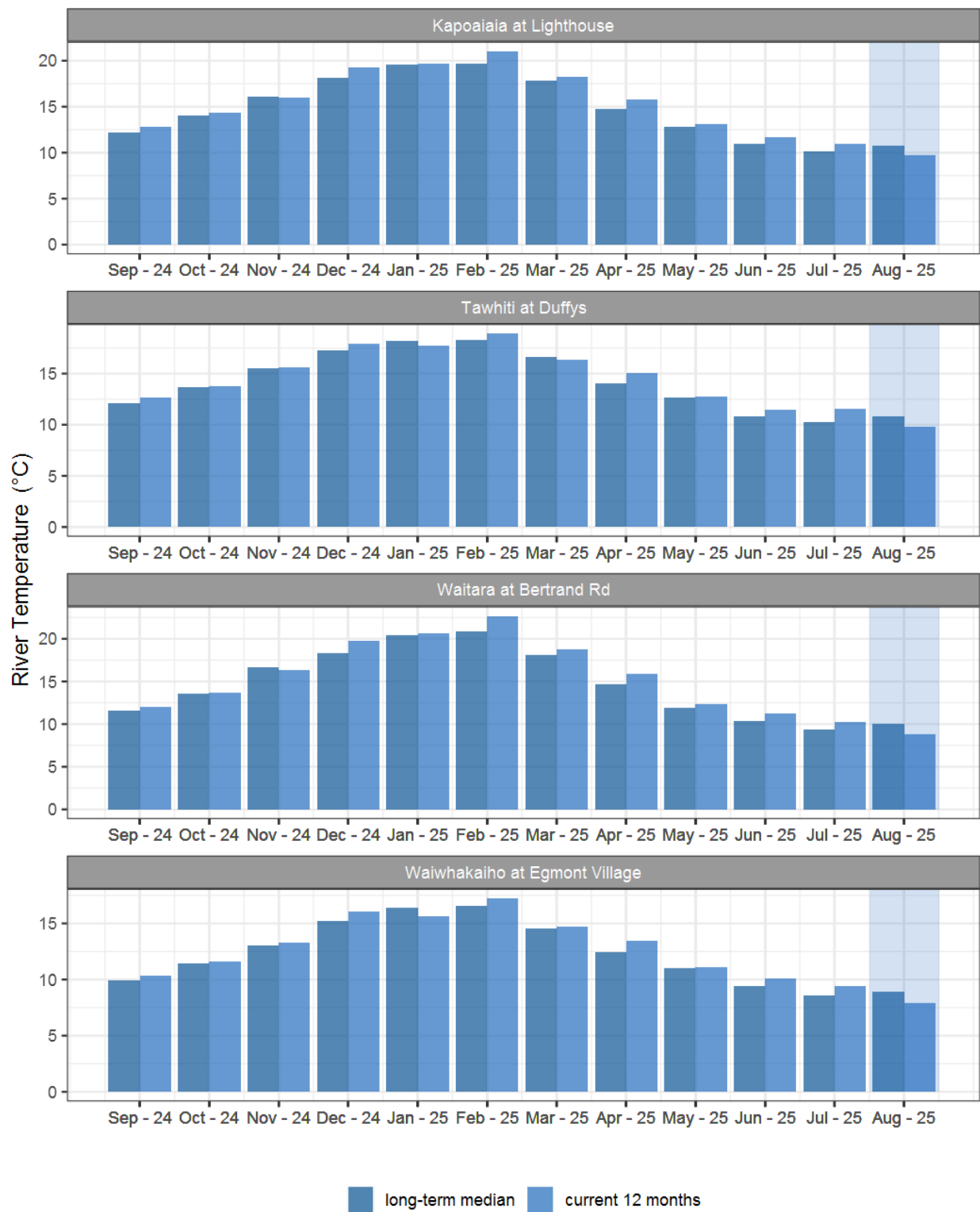


Figure 3.2: Monthly mean river temperature for this month and the mean of all previously recorded months.

4. Air Temperature

Map 4: August mean air temperature with difference to long-term mean (°C).

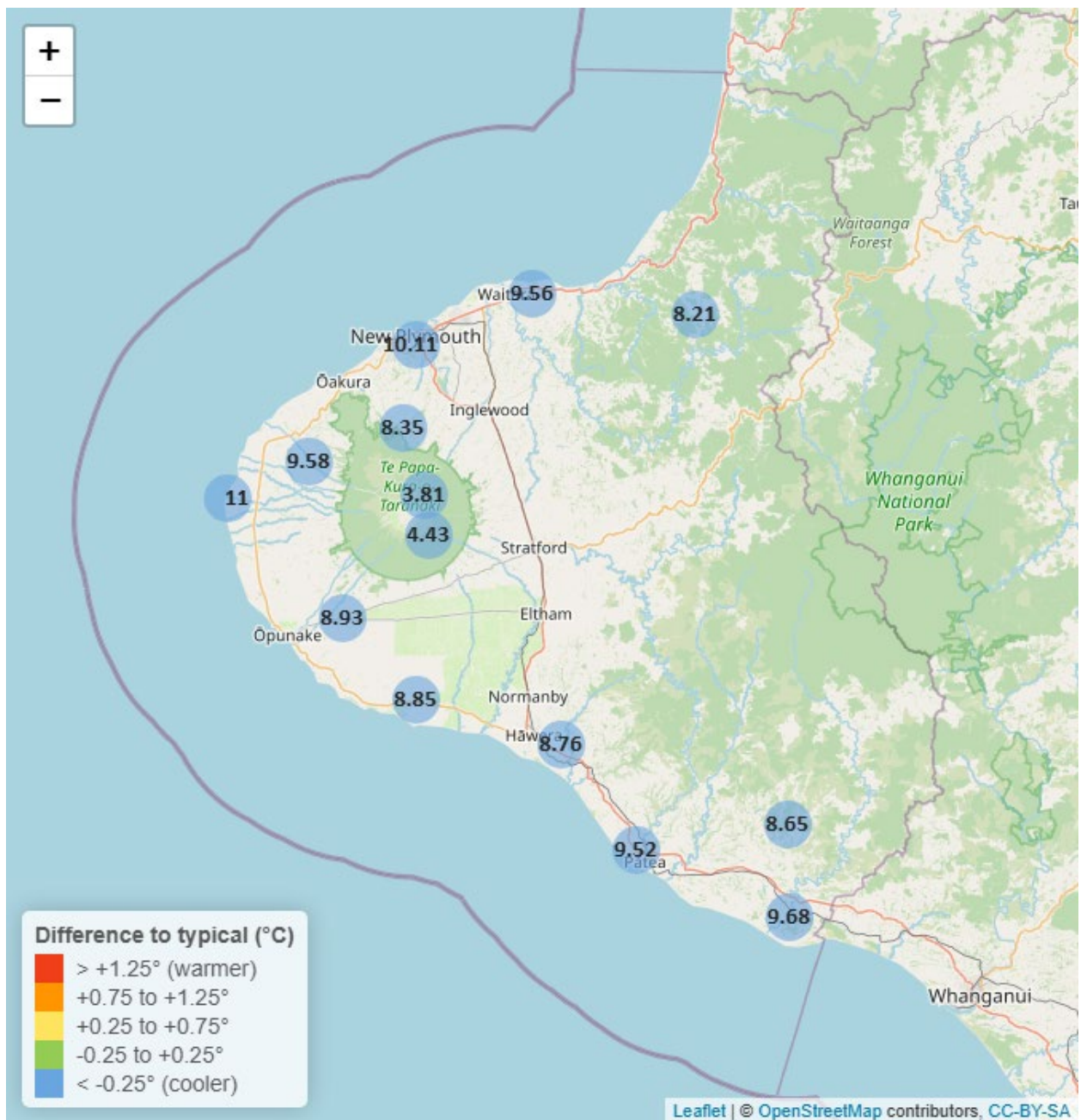


Table 4: Summary of high, low and mean air temperature for August and for August in all preceding years of record.

August 2025 - Air Temperature (°C)								
	Highs		Lows		Mean			
Site	current month	historic	current month	historic	current month	historic	August maximum	Data years
Brooklands Zoo at New Plymouth	15.96	16.01	5.65	5.44	10.11	11.28	20.42	13
Dawson Falls	9.13	9.74	0.89	0.49	4.43	5.30	11.86	10
Kapoaiaia at Lighthouse	14.71	15.02	5.88	6.38	11.00	12.24	16.18	13
Kaupokonui at Glenn Rd	13.71	15.41	3.92	4.42	8.85	11.26	15.93	10
Mangorei Upper at Forest Hill	12.06	12.22	4.59	4.59	8.35	8.88	15.92	8
Motunui M39 at Weston W3	14.28	14.72	4.66	4.97	9.56	11.33	18.06	8
North Taranaki at Camphouse	7.83	9.14	0.20	0.37	3.81	5.02	12.76	10
Patea at Bore 3	14.07	14.90	4.64	5.00	9.52	10.98	16.31	13
Stony at Mangatete Bridge	13.88	14.31	4.88	5.44	9.58	10.63	17.11	9
Taungatara at Eltham Rd	14.01	14.38	4.35	4.55	8.93	10.51	16.23	10
Tawhiti at Duffys	14.92	15.09	0.38	1.75	8.76	10.84	17.13	12
Uruti at Kaka Rd	12.64	13.16	4.34	4.42	8.21	9.30	17.26	7
Waitotara at Hawken Rd	15.36	15.58	4.11	4.75	9.68	11.15	17.43	9
Weraweraonga at Mangawhio Rd	15.64	16.00	1.97	2.09	8.65	10.59	17.61	8

4.2 Long-term data patterns

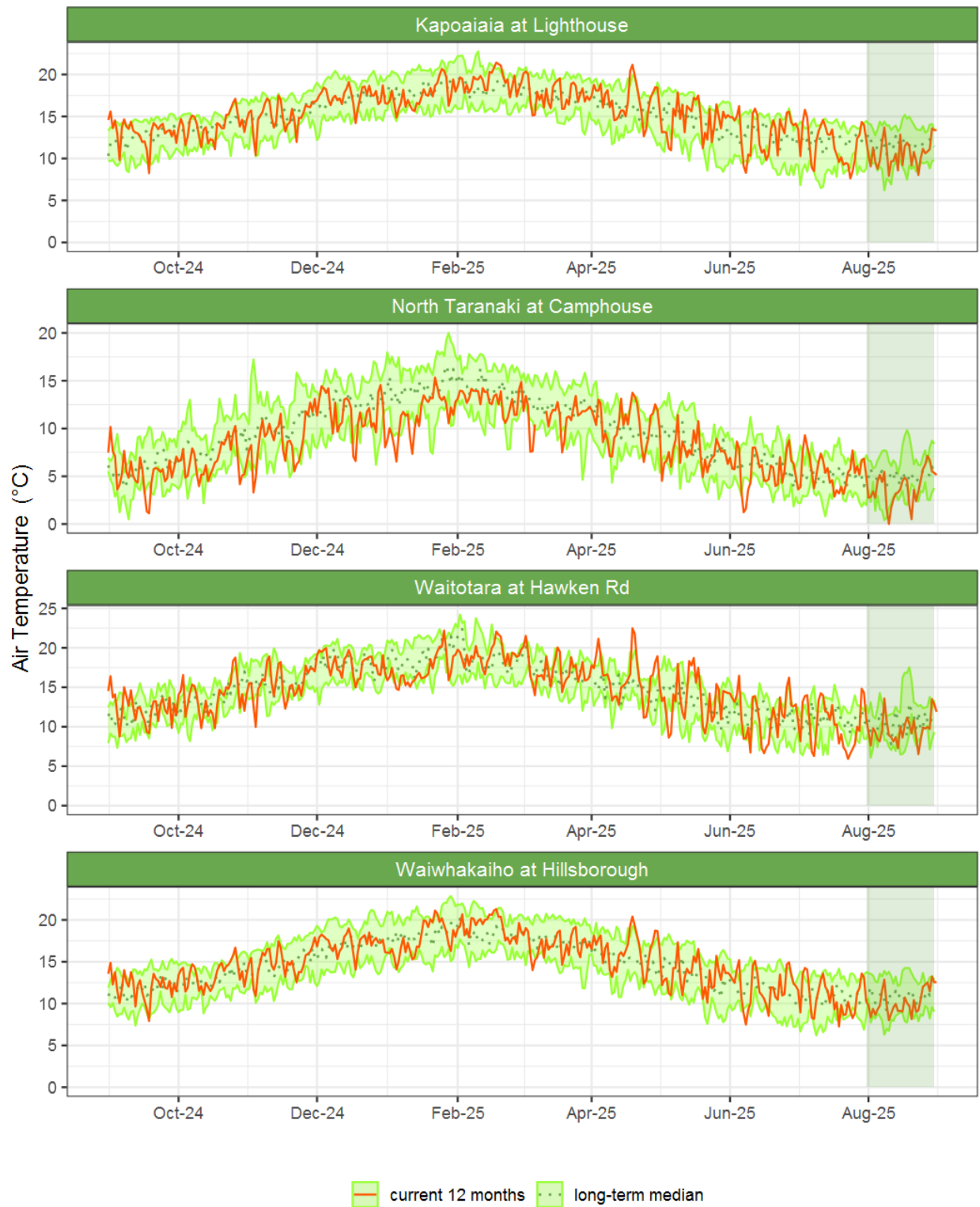


Figure 4.1: Running average air temperature for selected sites, set in context of the historic record.

4.3 Monthly Bar Charts



Figure 4.2: Monthly mean air temperature for August and the mean of all previously recorded months.

5. Soil Moisture

Map 5: August mean soil moisture content (%).

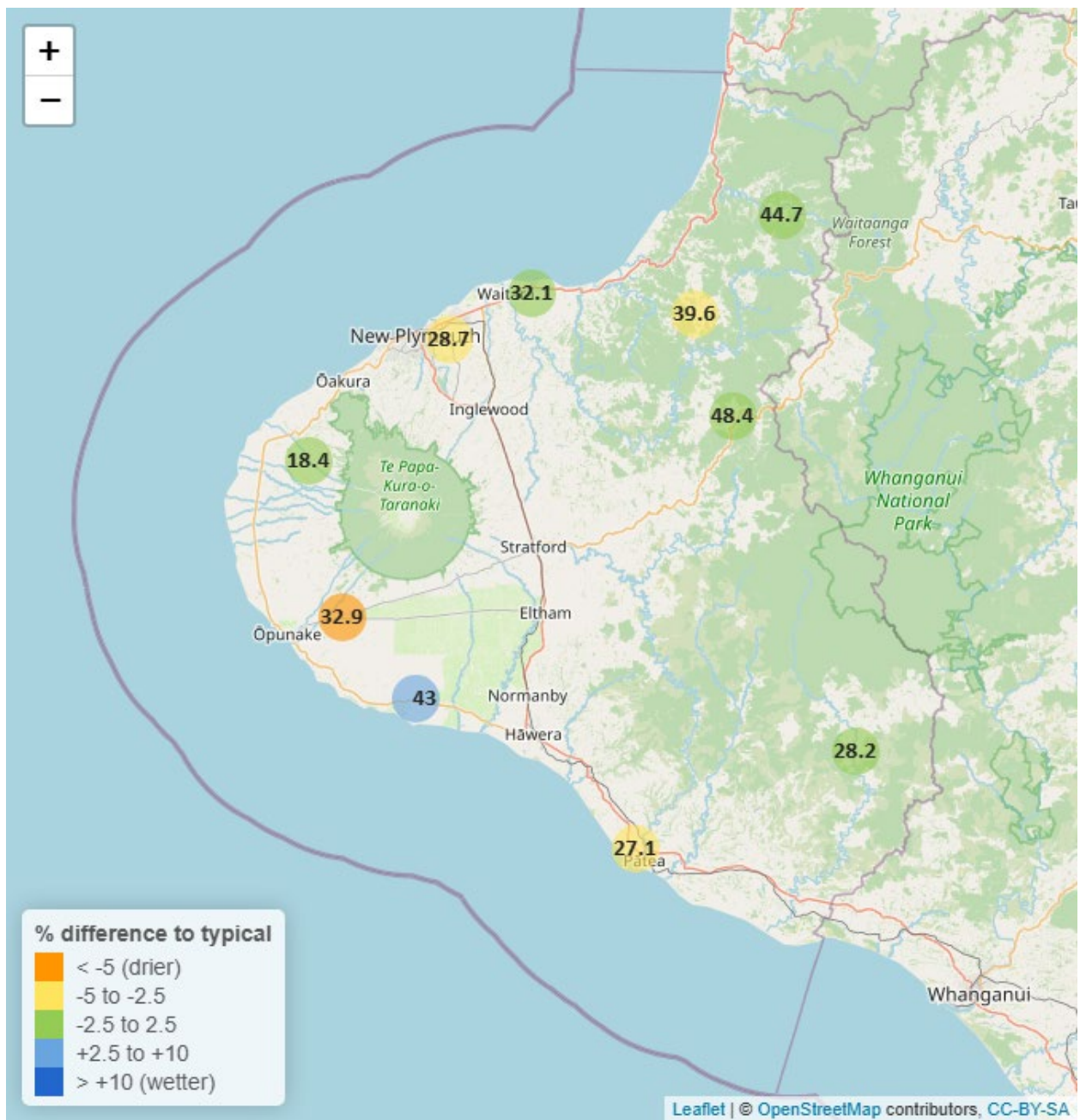


Table 5: Summary of high, low and mean soil moisture for August and for August in all preceding years of record.

August 2025 - Soil Moisture (%)								
	Highs		Lows		Mean			
Site	current month	historic	current month	historic	current month	historic	August maximum	Data years
Kaupokonui at Glenn Rd	45.58	46.12	37.53	32.76	43.01	37.41	46.97	14
Kotare at OSullivans	49.74	52.71	42.52	37.82	44.66	44.81	54.33	13
Motunui M39 at Weston W3	33.36	33.78	31.18	29.39	32.09	31.75	33.66	12
Patea at Bore 3	28.16	34.79	26.28	25.68	27.09	29.87	28.90	9
Pohokura Saddle	51.94	52.32	45.90	40.92	48.39	47.60	55.04	10
Stony at Mangatete Bridge	22.31	26.43	17.31	15.95	18.40	20.84	24.10	9
Taungatara at Eltham Rd	36.76	46.48	31.65	29.75	32.89	39.70	39.64	12
Uruti at Kaka Rd	42.03	47.55	38.31	39.99	39.64	42.76	43.69	14
Waitotara at Rimunui Station	31.11	31.58	27.04	26.53	28.24	29.21	31.99	8
Waiwhakaiho at Hillsborough	31.58	35.61	27.59	25.97	28.67	31.35	34.30	13

5.2 Long-term data patterns

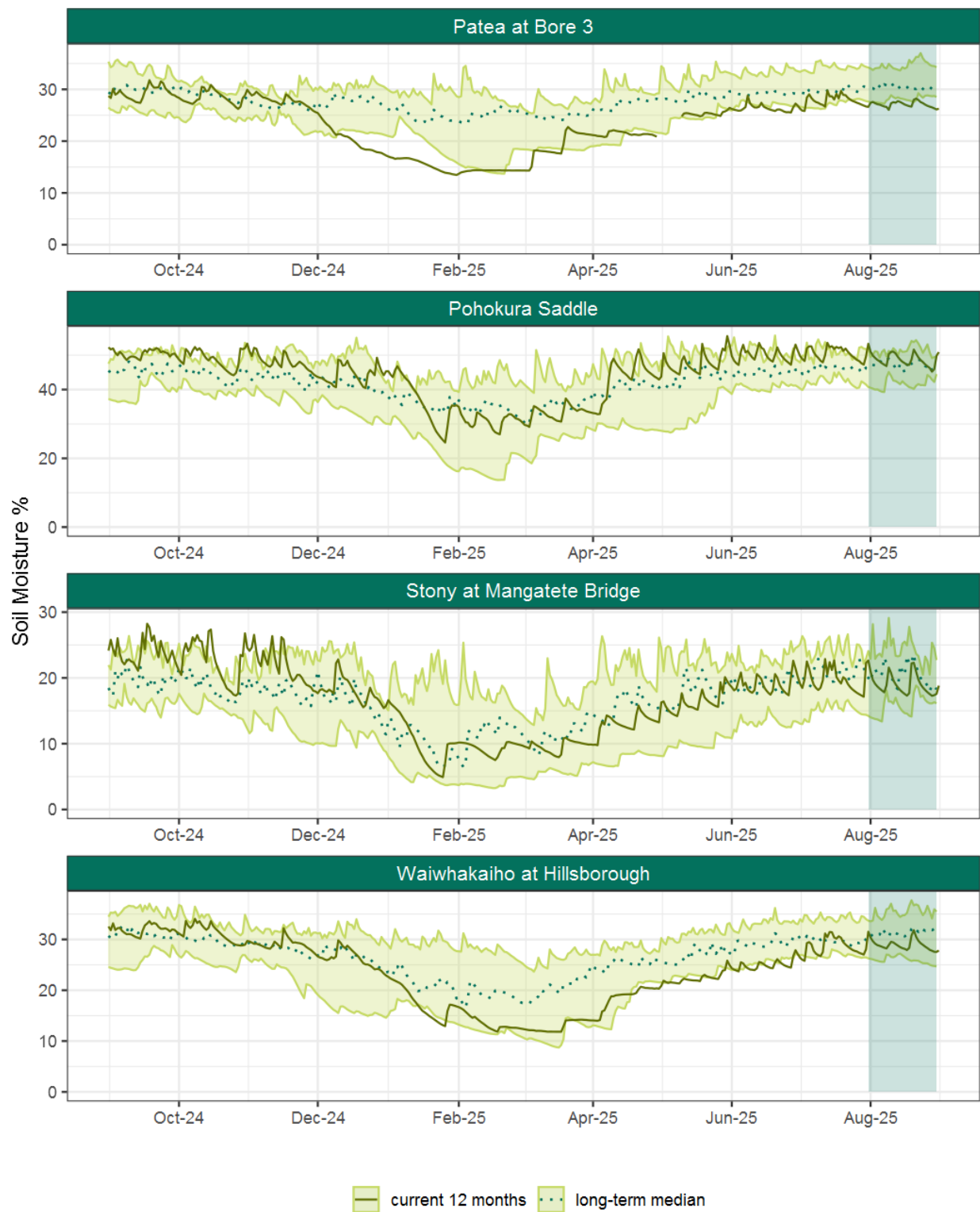


Figure 5.1: Running average soil moisture for selected sites, set in context of the historic record.

5.3 Monthly Bar Charts

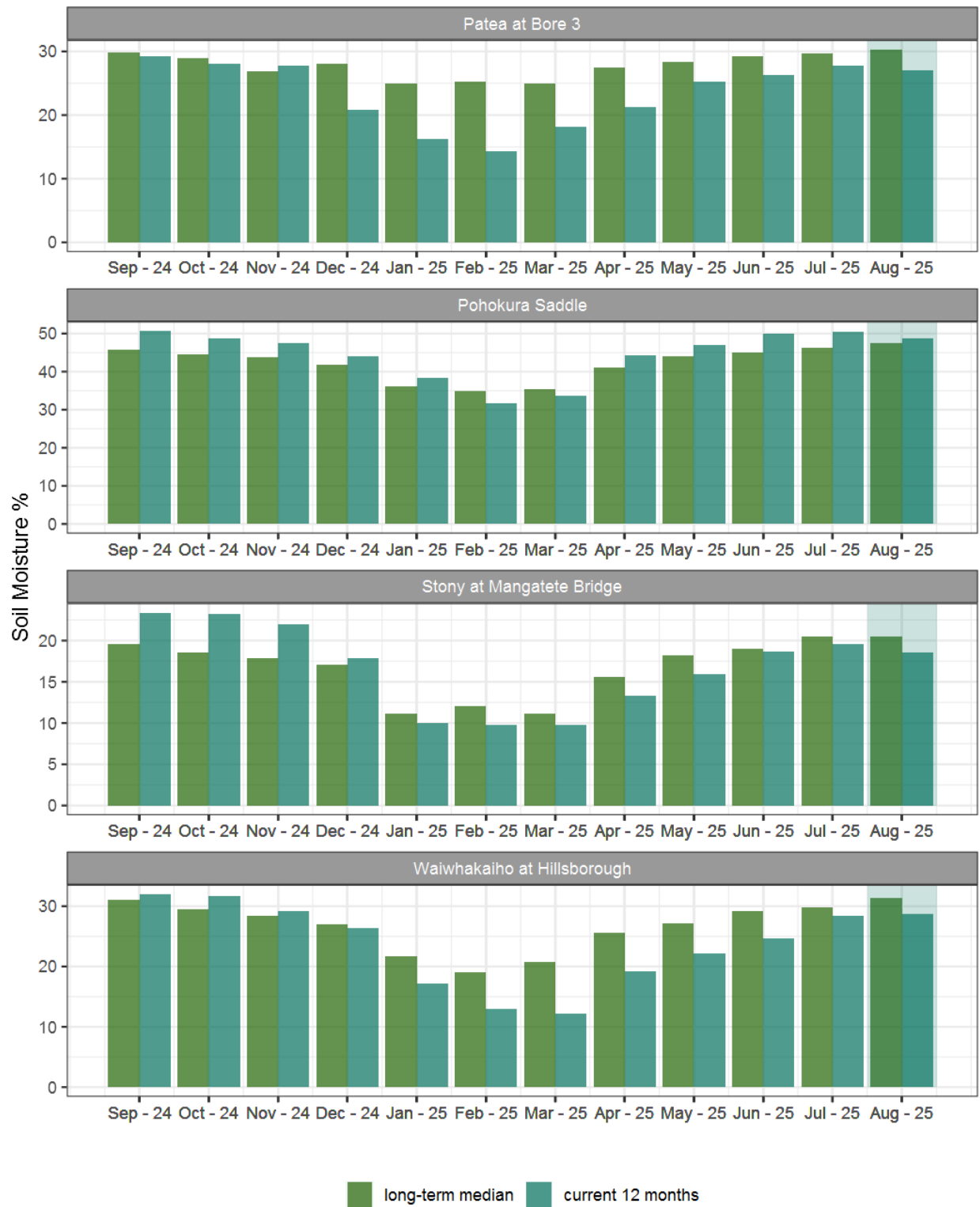


Figure 5.2: Monthly mean soil moisture for this month and the mean of all previously recorded months.

6. Soil Temperature

Map 6: August mean soil temperatures with difference to long-term mean (°C).

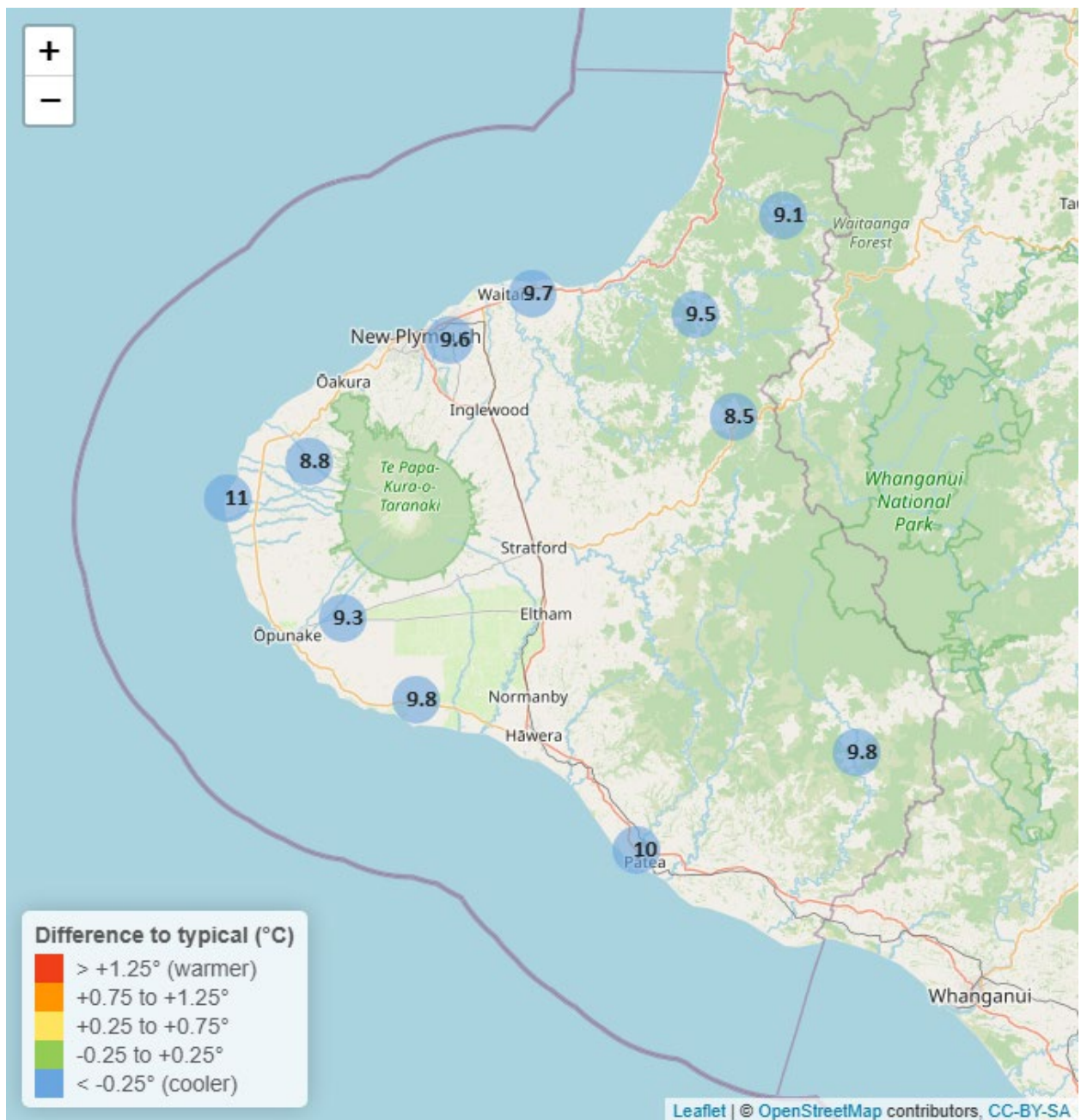


Table 6: Summary of high, low and mean soil temperature for August and for August in all preceding years of record.

August 2025 - Soil Temperatures (°C)								
	Highs		Lows		Mean			
Site	current month	historic	current month	historic	current month	historic	August maximum	Data years
Kapoaiaia at Lighthouse	14.07	13.74	8.23	9.25	11.0	11.64	16.54	14
Kaupokonui at Glenn Rd	11.59	12.63	8.62	8.92	9.8	10.74	12.30	14
Kotare at OSullivans	10.87	11.94	8.51	7.60	9.1	9.86	11.17	13
Motunui M39 at Weston W3	11.62	12.64	9.08	8.67	9.7	10.45	12.31	12
Patea at Bore 3	11.65	12.94	8.82	8.88	10.0	10.95	12.40	9
Pohokura Saddle	10.51	11.52	7.22	7.82	8.5	9.53	10.91	10
Stony at Mangatete Bridge	11.25	12.70	7.76	8.50	8.8	10.44	11.80	8
Taungatara at Eltham Rd	11.25	12.37	8.14	8.61	9.3	10.50	11.90	12
Uruti at Kaka Rd	10.72	11.99	8.98	8.12	9.5	10.21	11.20	14
Waitotara at Rimunui Station	11.66	13.29	8.36	8.51	9.8	10.82	12.81	8
Waiwhakaiho at Hillsborough	11.59	12.76	8.76	8.98	9.6	10.79	12.06	13

6.2 Long-term data patterns

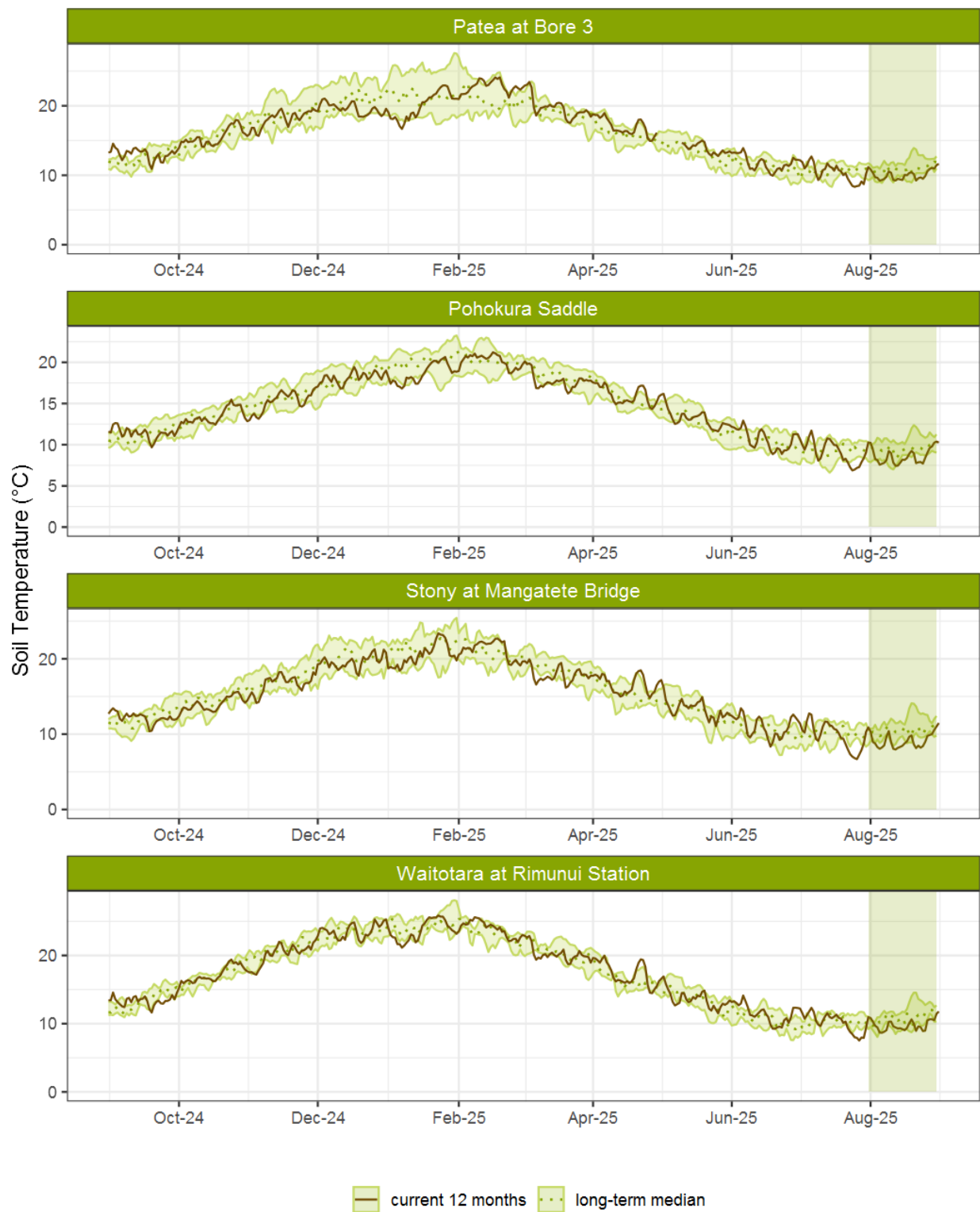


Figure 6.1: Running average soil temperature for selected sites, set in context of the historic record.

6.3 Monthly Bar Charts

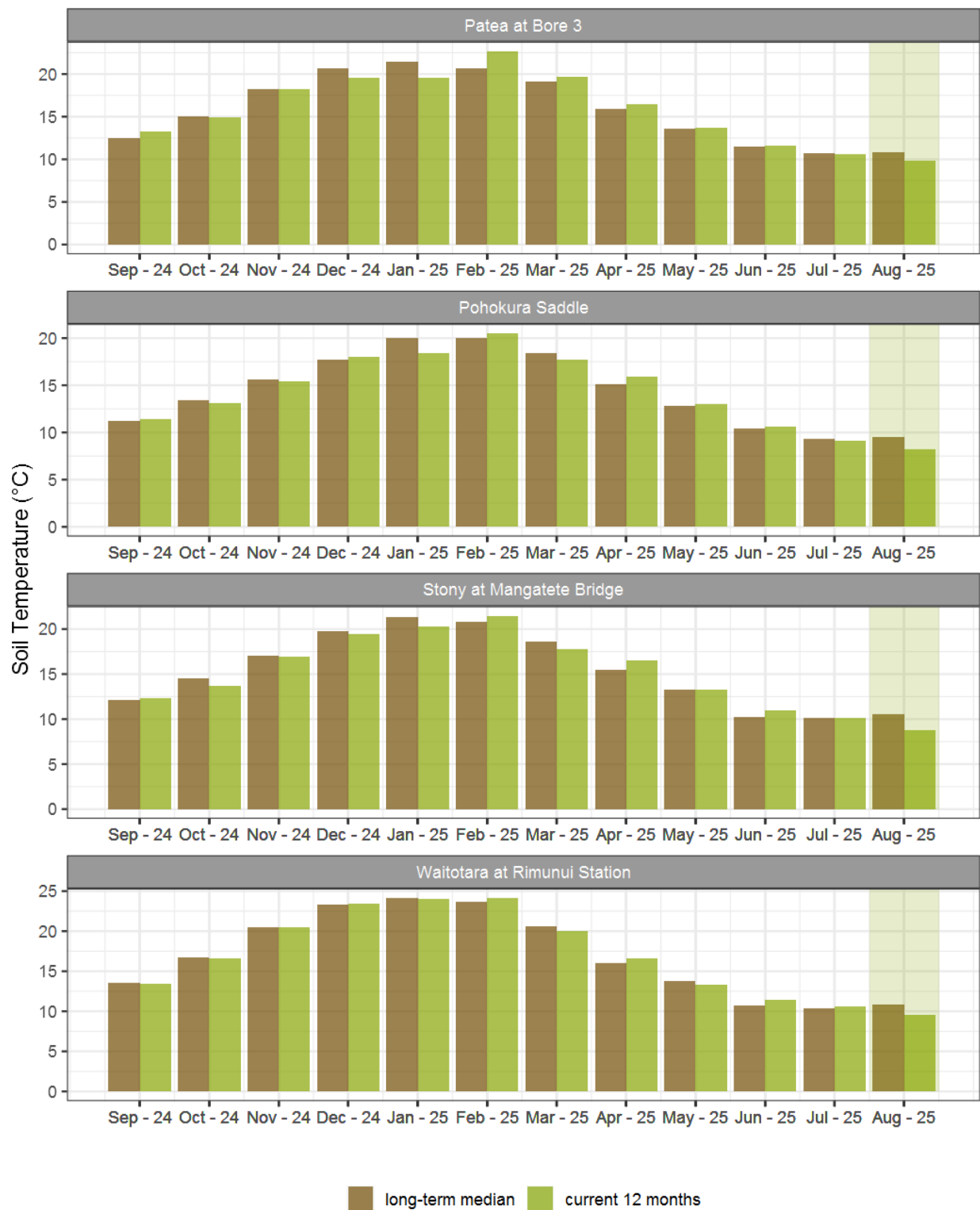


Figure 6.2: Monthly mean soil temperature for this month and the mean of all previously recorded months.

7. Wind Speed and Maximum Gusts

Map 7: August mean of wind speed with difference to long-term values (km/hr).

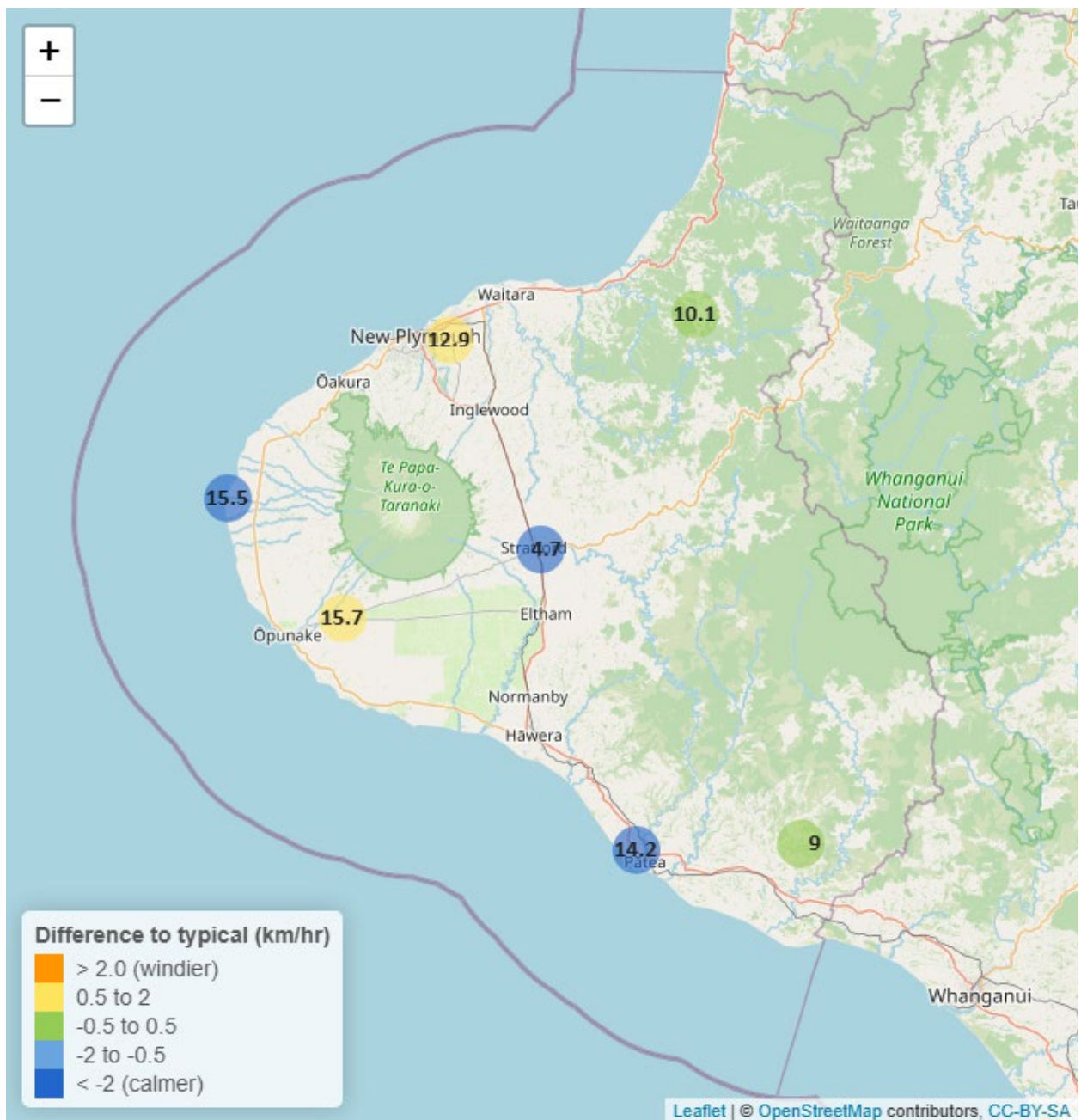


Table 7: Summary of high, low and mean wind speed for August and for August in all preceding years of record.

August 2025 - Wind Speed (average) - (km/hr)								
	Highs		Lows		Mean			
Site	current month	historic	current month	historic	current month	historic	August maximum	Data years
Kapoaiaia at Lighthouse	35.47	40.62	5.21	6.61	15.5	19.32	54.13	27
Patea at Bore 3	41.28	38.53	6.30	6.51	14.2	17.23	53.47	9
Patea at Stratford	14.84	18.79	2.63	2.51	4.7	6.84	25.71	19
Taungatara at Eltham Rd	31.15	33.08	5.91	6.44	15.7	15.07	43.69	10
Uruti at Kaka Rd	22.72	25.06	1.80	3.18	10.1	10.15	35.98	27
Waitotara at Ngutuwera	23.12	22.42	3.13	2.23	9.0	9.51	37.66	27
Waiwhakaiho at Hillsborough	32.89	28.69	5.02	4.11	12.9	12.37	47.03	8

Table 8: Summary of high, low and maximum wind gusts for August and for August in all preceding years of record.

August 2025 - Wind Gusts (Maximum) - (km/hr)								
	Highs		Lows		Mean			
Site	current month	historic	current month	historic	current month	historic	August maximum	Data years
Kapoaiaia at Lighthouse	64.44	81.00	15.84	21.60	38.5	49.00	77.04	27
Patea at Bore 3	84.80	78.60	20.40	20.10	40.8	46.90	87.10	9
Patea at Stratford	56.16	64.44	13.68	18.72	26.3	35.20	69.84	19
Taungatara at Eltham Rd	79.60	77.90	22.70	21.80	44.8	44.90	86.10	10
Uruti at Kaka Rd	73.44	70.56	23.04	19.80	48.6	39.24	99.36	26
Waitotara at Ngutuwera	90.00	69.84	19.80	17.10	41.4	39.30	112.68	27
Waiwhakaiho at Hillsborough	80.40	69.80	19.90	20.30	40.9	43.45	81.50	8

7.2 Long-term data patterns

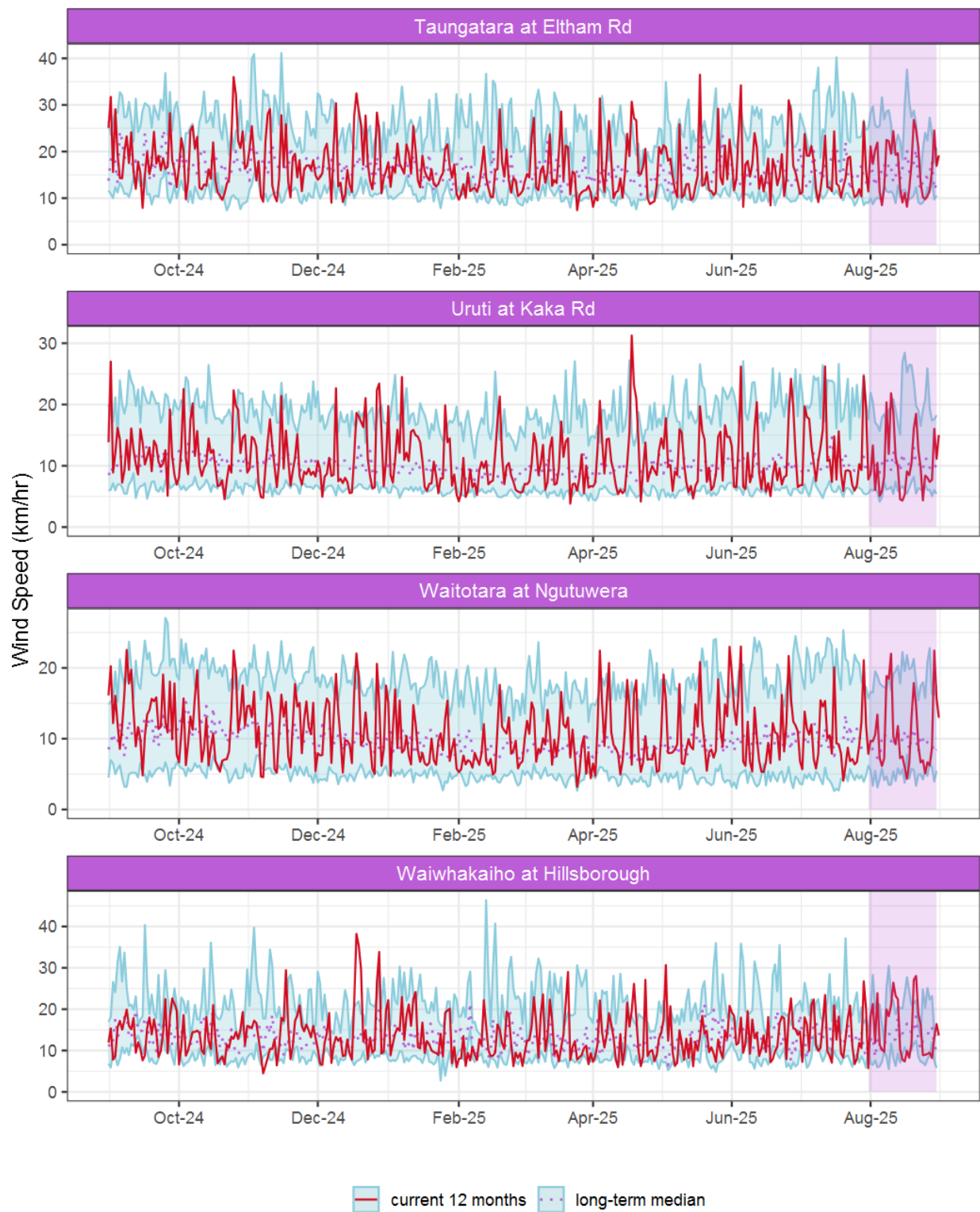


Figure 7.1: Running average wind speed (km/hr) for selected sites, set in context of the historic record.

7.3 Monthly Bar Charts

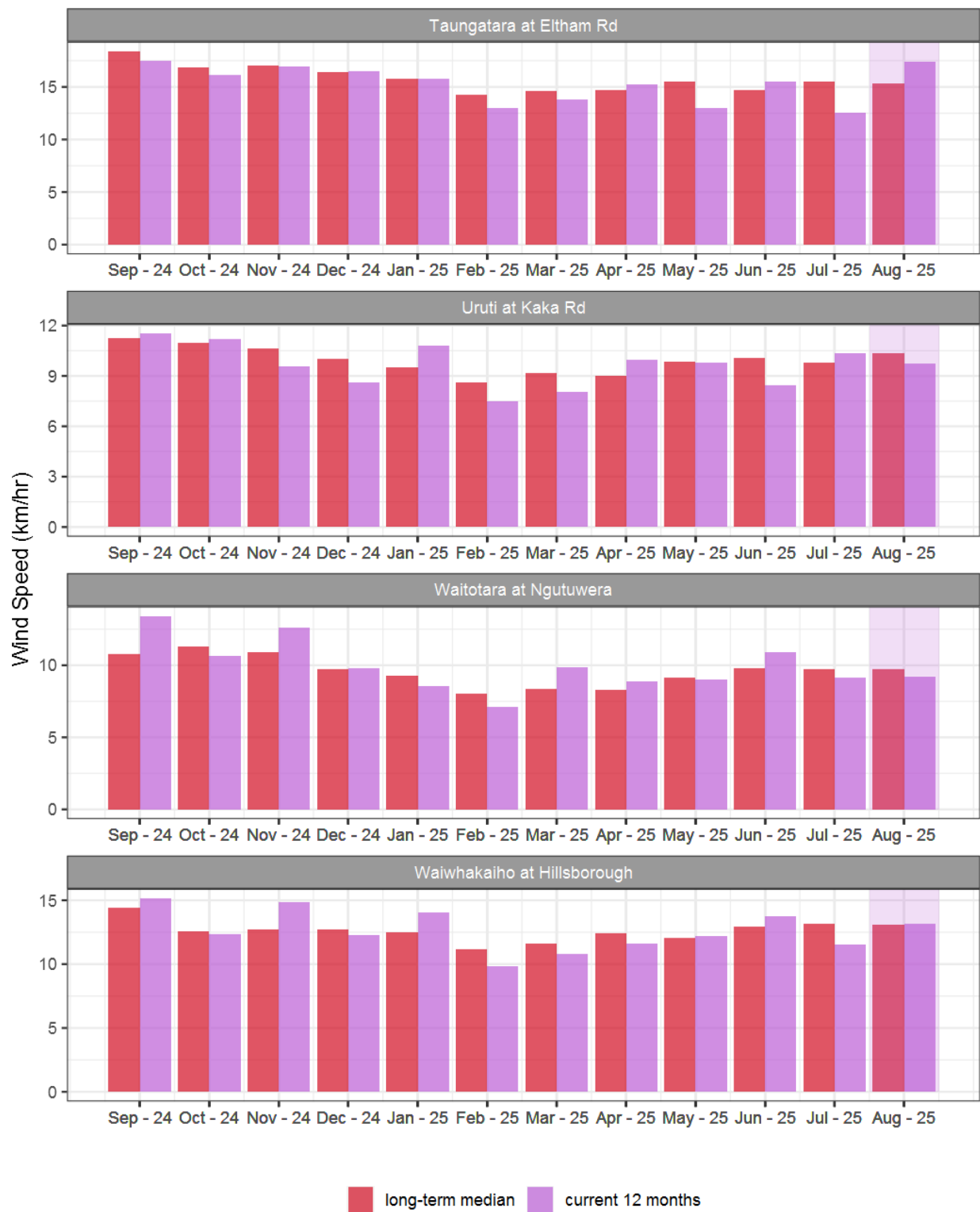


Figure 7.2: Monthly mean wind speed (km/hr) for selected sites, relative to the mean of all previously recorded months.

7.4 Wind roses for August 2025

Average windspeed

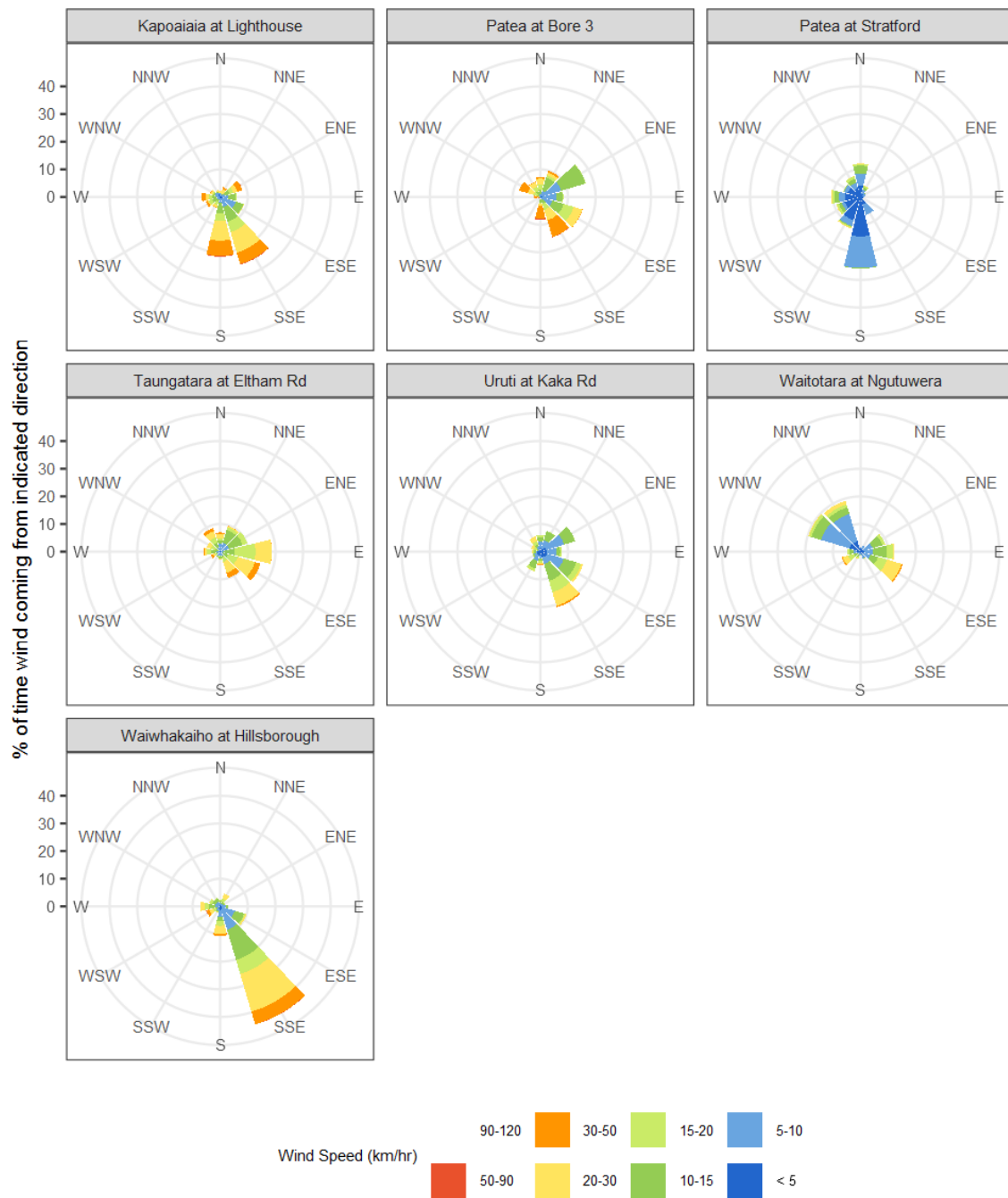


Figure 7.3: Wind roses for August for average wind speed (km/hr).

Maximum gust strength

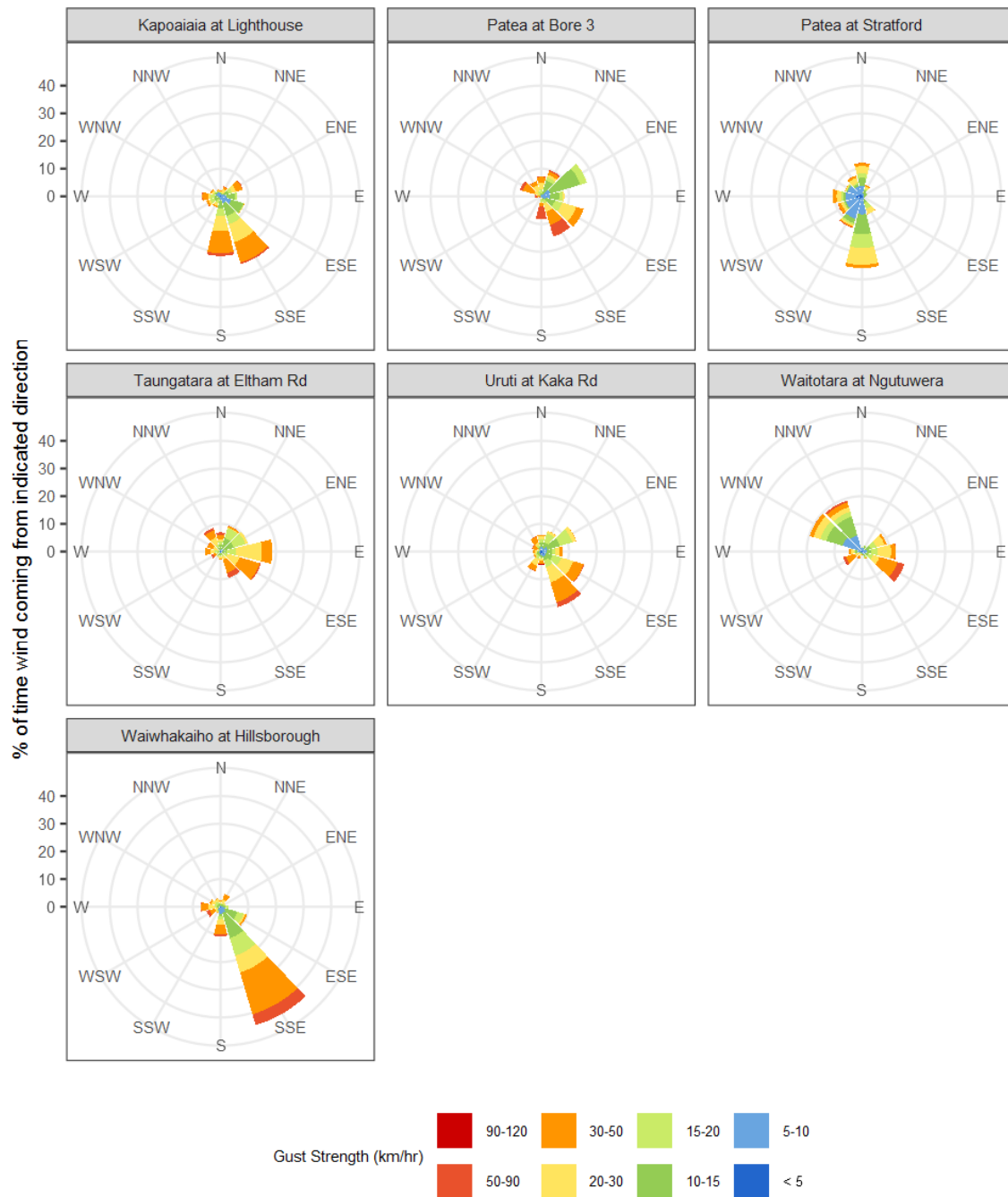


Figure 7.4: Wind roses for August for maximum wind gust (km/hr).

Summary of month's conditions

Rainfall

On average August rainfall was 119.2mm, 38% less than usual, ranging from 54% less rain than usual at Mangorei Upper at Forest Hill, and 8% less rain than normal at Tawhiti at Duffys.

Year-to-date rainfall is lowest at Waitōtara at Hawken Rd with 25% less rainfall than normal, Pātea at Stratford has had the highest year-to-date rainfall with 15% more rainfall than normal, on average there has been 5% less than normal across all rain gauges.

Compared to typical full year totals, on average sites have already received 62% of a typical year's rainfall. With the highest value at Pātea at Stratford, 77% of normal, whereas Waitōtara at Rimunui Station sits at 50% of the typical year's total.

River Flow

Mean river flows for August were 35.9% lower than typical values, low flows were 24.6% greater, and high flows 63.4% lower than typical values. The maximum river flow recorded in August was 112.3m³/sec at Waitara at Bertrand Rd on 8 August.

River Water Temperature

Mean river (non-mountain) water temperatures were 9.3°C, an average of 1°C cooler than long-term August values. Nighttime-low water temperatures were on average 0.3°C cooler than historic lows, and day-time high temperatures were on average 0.9°C cooler than historic highs. The maximum river water temperature recorded in August was 14.2°C at Kapoiaia at Lighthouse, on 30 August.

Air Temperature

The average air temperature for the region (excluding Te Maunga sites) was 8.7°C, which is 1.4°C cooler than long-term August averages. Low air temperatures for August were on average 0.3°C cooler than the August average for previous years. Day-time high temperatures were on average 0.5°C cooler than historic highs. The maximum air temperature recorded in August was 20.4°C at Brooklands Zoo at New Plymouth on 27 August.

Soil Moisture

The average soil moisture for August across sites in Taranaki region was 34.3%. Soil moistures were on average 1.2% drier than typical August values. On average, low soil moistures were 2.1% wetter than previous lows, and the highs were on average 3.5% drier than previous values for August.

Soil Temperature

August soil temperatures were generally 1°C cooler than long-term averages. Average nighttime low soil temperatures were 0.1°C cooler than recorded lows, and upper day-time

soil temperatures were on average 1.1°C cooler than long-term August highs. The maximum soil temperature recorded in August was 16.5°C at Kapoiaia at Lighthouse, on 30 August.

Wind Speed (average and 10 minute gust)

August average wind speeds were 11.7km/hr, with average gust strength of 40.2km/hr, these were 1.2km/hr lighter, and 2.4km/hr weaker than the long-term average. Average calm weather wind speeds were 0.2km/hr lighter than recorded lows, and windy conditions were on average 0.8km/hr lighter than long-term August highs. The maximum wind gust recorded in August was 112.68km/hr at Waitōtara at Ngutuwera on 29 August.

Report date: 9 September 2025.

Supply of environmental data - General terms and conditions

The enclosed information is the highest quality data the Taranaki Regional Council (the Council) is currently able to provide. Some or all of the data being provided may not yet have been audited however, and is therefore subject to change.

As we endeavour to continuously improve our products, we also reserve the right to further amend data where necessary and without notice at any time. As a result, the information supplied to you now may not be the same as that subsequently produced for you or any other requestor.

While the Council has exercised all reasonable skill and care in controlling the contents of the information, you should independently check the information provided if the accuracy of that information is important to you.

Under no circumstances will the Council, its employees or agents be liable in contract, tort or otherwise to compensate you for any loss, injury or damage (including loss of profits or consequential loss) arising directly or indirectly from the supply by the Council or its agents of inadequate, inaccurate or incorrect environmental data.

Any use of the material supplied, for example, by inclusion in a report or a media release, should be accompanied by an acknowledgment of the source of the data. We also request that any outputs generated through the use of the information provided be provided to the Council.