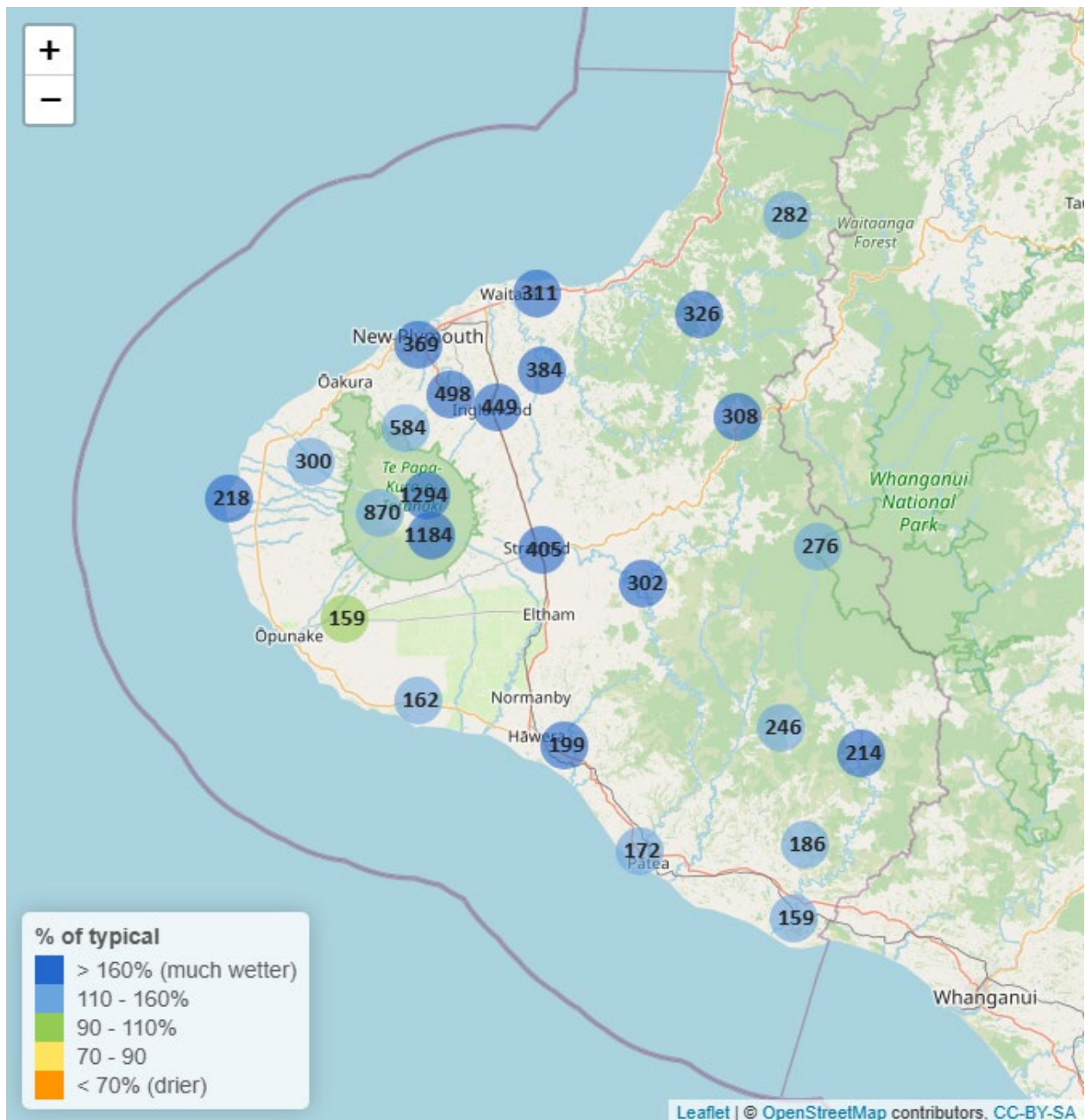


Taranaki Regional Council Monthly Rainfall and Environmental Data Report for July 2025

Note: The data presented here are provisional data only and may change as a result of quality control at a later date.

1. Rainfall

Map 1: July total rainfall (mm) and percentage of long-term mean (colour key).



Map 1a. Total rainfall 1 January to end July (mm) and percentage of long-term mean (colour key).

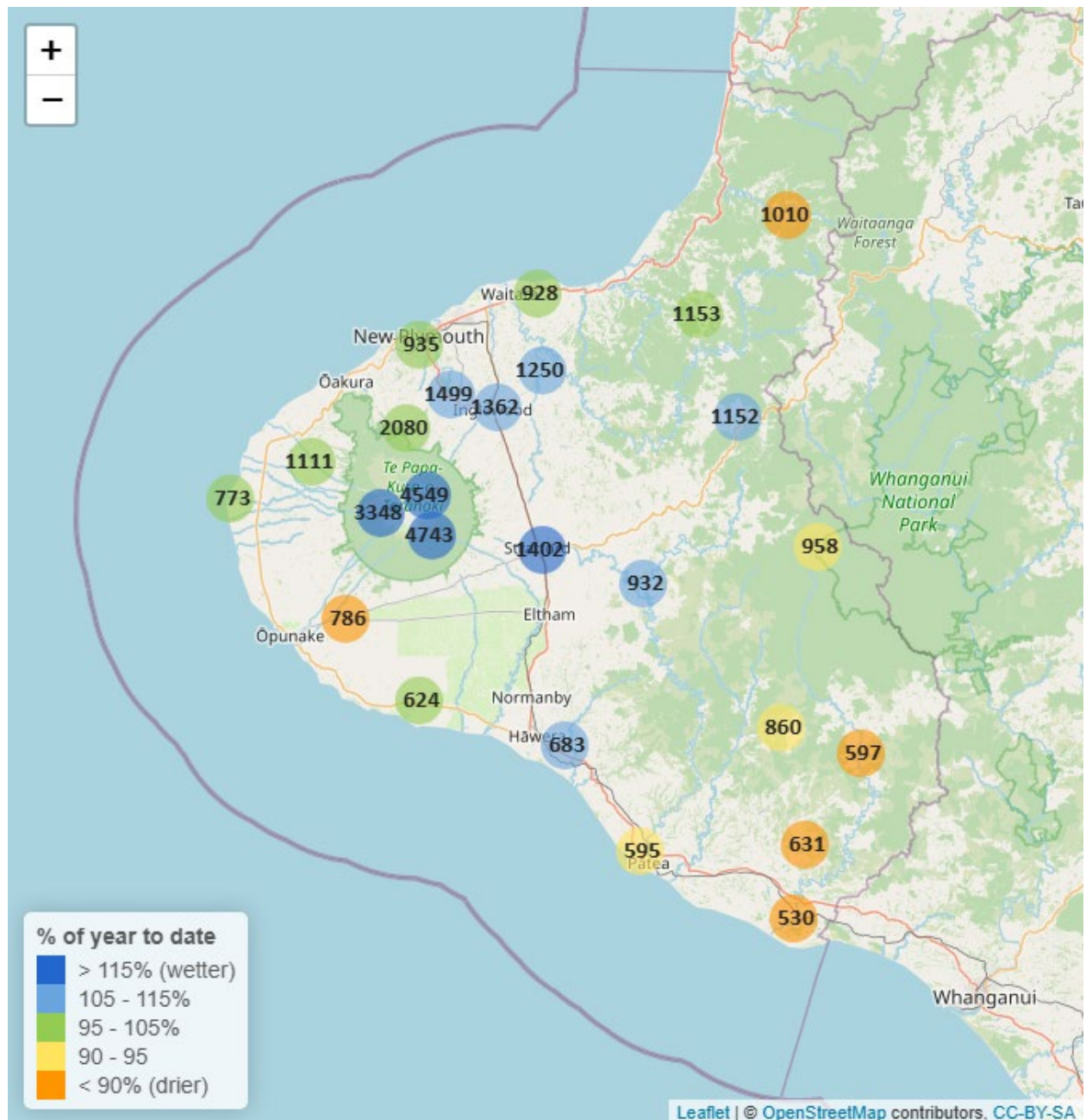


Table 1: Rainfall July and year-to-date totals for rain gauge sites in Taranaki.

	July			Year to Date			
Rain gauge	# days with rain	Total rain (mm)	% of typical month	Total to date (mm)	% of typical year to date	% of typical full year	Records Began
North Taranaki at Camphouse	16	1294.0	177.8	4549.4	118.1	63.8	1996
Dawson Falls	18	1184.0	173.4	4743.0	132.9	74.5	1999
Kapoaiaia at Kahui Hut	18	870.0	153.5	3348.5	115.5	64.1	2006
Mangorei Upper at Forest Hill	16	583.5	149.8	2080.5	104.5	57.3	2018
Waiwhakaiho at Hillsborough	14	380.5	212.3	1018.0	97.7	56.5	2013
Brooklands Zoo at New Plymouth	14	369.2	227.3	934.8	99.9	59.0	2012
Motunui M39 at Weston W3	14	311.4	210.4	928.0	103.2	59.0	1999
Waiwhakaiho at Egmont Village	15	497.5	210.2	1499.0	114.4	62.7	1996
Manganui at Everett Park	15	384.0	188.8	1250.0	110.4	59.9	1996
Inglewood at Oxidation Ponds	14	449.0	195.6	1362.5	106.6	58.2	2000
Stony at Mangatete Bridge	13	300.5	153.9	1111.0	99.3	55.9	2004
Kapoaiaia at Lighthouse	15	218.4	168.5	773.0	100.8	57.8	1999
Taungatara at Eltham Rd	16	159.0	95.9	786.5	89.9	50.2	2005
Kaupokonui at Glenn Rd	15	161.5	135.4	624.0	95.0	53.9	1998
Patea at Stratford	17	405.0	197.7	1402.0	127.0	71.0	1999
Mangaehu at Bridge	15	301.5	201.4	931.5	105.5	58.9	1999
Kotare at OSullivans	16	282.0	136.8	1010.0	88.9	47.1	1998
Uruti at Kaka Rd	17	326.0	164.5	1153.0	99.7	52.3	1996
Pohokura Saddle	15	308.5	166.6	1151.5	109.8	58.0	1996
Omaru at Charlies	16	275.5	153.0	957.5	94.4	52.5	2006
Omahine at Moana Trig	16	246.0	158.9	859.5	92.2	51.3	2007

	July			Year to Date			
Rain gauge	# days with rain	Total rain (mm)	% of typical month	Total to date (mm)	% of typical year to date	% of typical full year	Records Began
Waitotara at Rimunui Station	16	214.5	161.2	597.0	80.0	43.7	1996
Waitotara at Ngutuwera	15	185.5	151.7	631.0	89.9	49.4	1999
Tawhiti at Duffys	14	199.0	182.2	683.0	111.8	61.9	1996
Patea at Bore 3	13	172.0	148.5	594.8	90.6	50.8	2006
Waitotara at Hawken Rd	17	159.0	140.2	530.4	78.9	46.2	2016

Notes: Low and high values in tables refer to the upper and lower 5th percentiles of the historic record for each site (except for wind gust and soil moisture which are the upper and lower 1st percentiles). Percentile values give a better indication of the general upper and lower range of the historic data against which to compare the current month. Start year (records began) shows the length of data used to compute historic highs, lows, and "typical values". Sites with a longer data record will generally provide a more reliable comparison to values in the current year.

1.2 Long-term data patterns

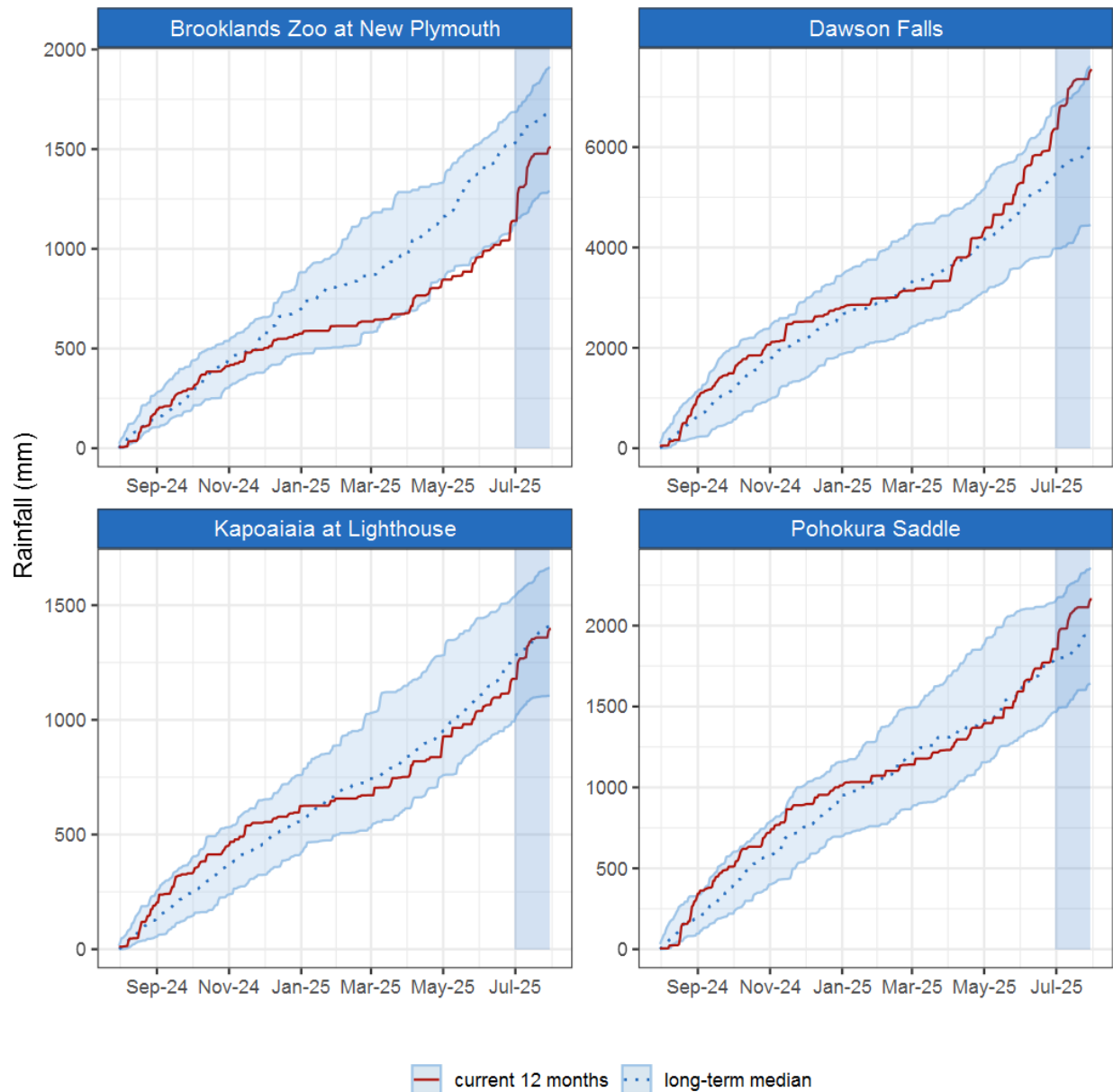


Figure 1.1: This year's and last year's data set in context of historic record at selected rain gauge sites in Taranaki.

1.3 Monthly Bar Charts

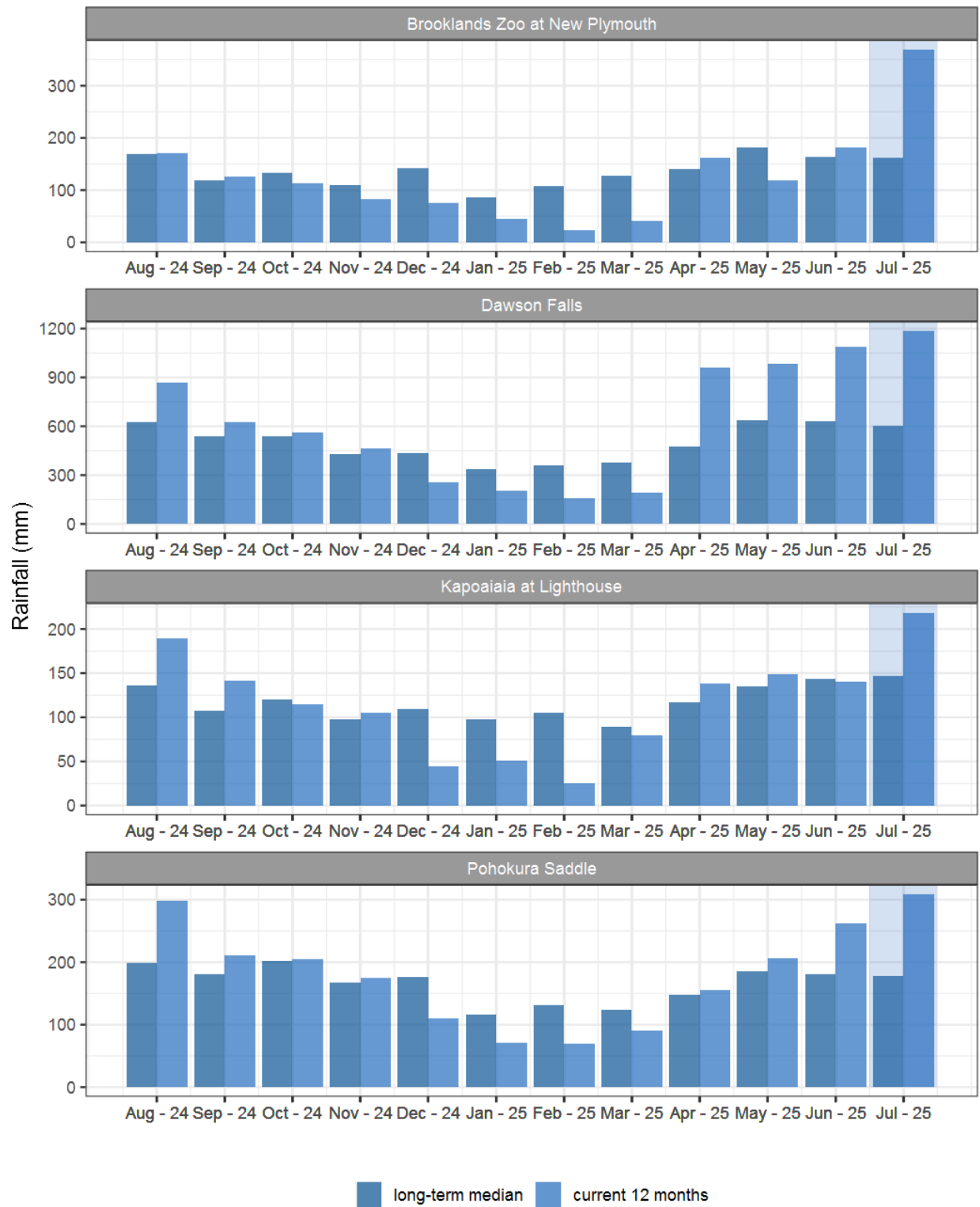


Figure 1.2: Monthly rainfall totals for this month and the mean of all previously recorded months.

2. River Flow

Map 2: July mean river flows (m³/sec), with difference as percentage of long-term mean.

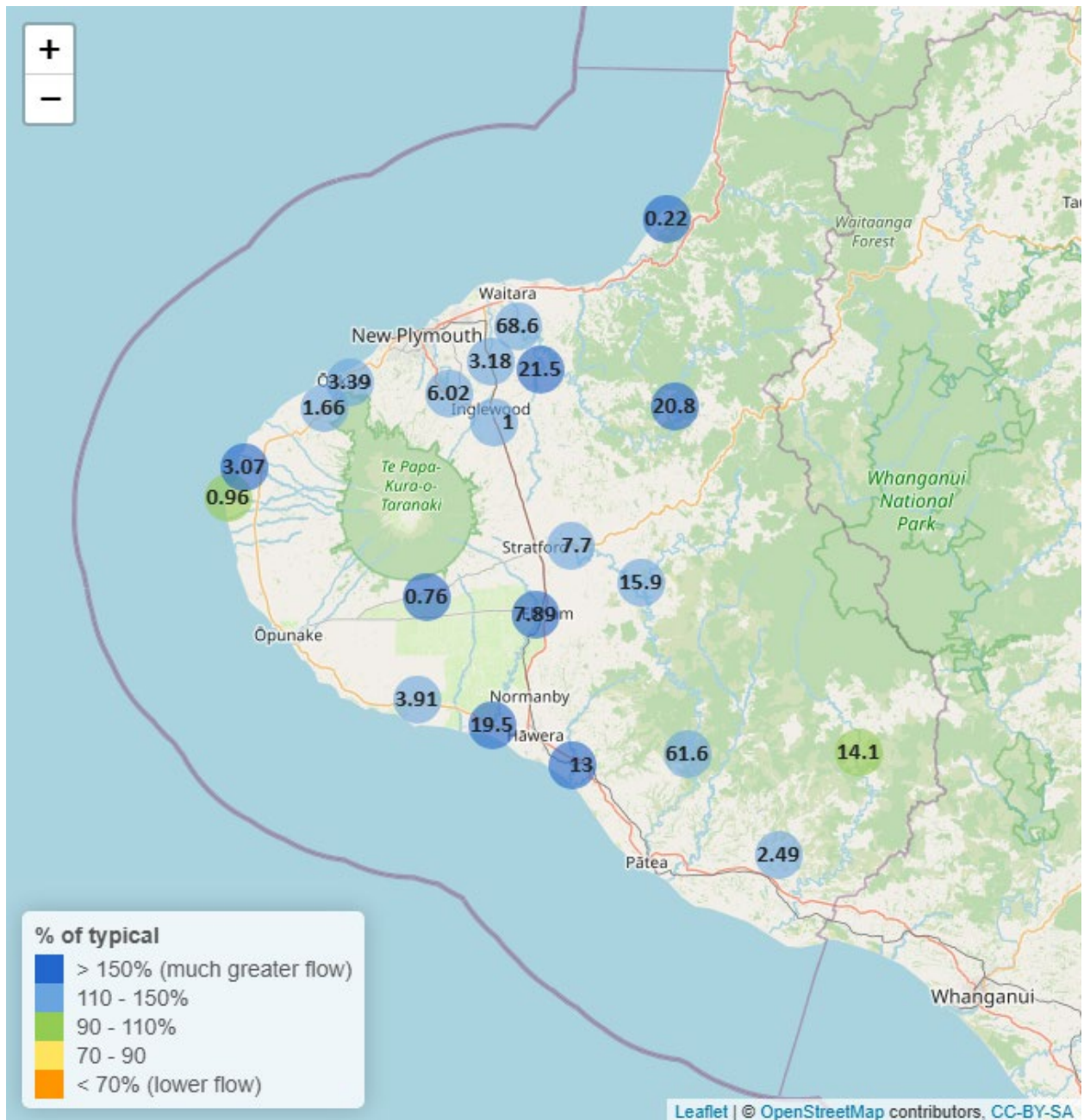


Table 2: Summary of high, low and mean flow for July and for July in all preceding years of record.

July 2025 - Recorded flows (m3/sec)								
	Highs		Lows		Mean			
River and Site	current month	historic	current month	historic	current month	historic	July maximum	Data years
Kapoaiaia at Lighthouse	4.43	4.05	0.44	0.47	0.96	1.00	55.12	39
Kaupokonui at Glenn Rd	26.23	12.30	1.17	1.61	3.91	3.39	174.09	46
Mangaehu at Bridge	107.02	56.89	5.71	4.31	15.90	10.75	318.51	47
Manganui at Everett Park	178.21	76.22	7.15	5.49	21.50	13.04	1087.38	34
Mangawheroiti Above Intake W.W	4.06	1.52	0.46	0.23	0.76	0.43	22.31	12
Moumahaki at Johnston Rd	22.69	7.16	0.92	0.60	2.49	1.78	205.24	7
Ngatoro at SH3	10.63	4.30	0.52	0.39	1.00	0.79	91.67	37
Oakura at Victoria Rd	17.79	13.85	1.20	1.08	3.39	2.58	153.29	6
Patea at McColls Bridge	263.08	108.52	18.06	3.72	61.60	42.83	647.03	35
Patea at Skinner Rd	52.57	19.78	2.45	1.92	7.70	5.21	223.89	47
Tangahoe below Railway Bridge	71.47	22.19	6.86	2.13	13.00	5.62	345.36	7
Timaru at Tataraimaka	10.95	6.81	0.52	0.62	1.66	1.48	184.10	12
Waikaramarama at Bridge	1.31	0.91	0.05	0.02	0.22	0.11	21.91	7
Waingongoro at Eltham Rd	35.48	10.80	3.72	1.30	7.89	3.16	125.54	50
Waingongoro at SH45	81.68	26.97	10.33	4.28	19.50	9.82	207.87	44
Waiongana at SH3a	19.01	9.88	1.12	0.80	3.18	2.24	182.40	44
Waitara at Bertrand Rd	572.70	260.62	23.64	14.83	68.60	45.98	1253.70	45
Waitara at Purangi Bridge	116.34	113.39	4.04	2.04	20.80	11.36	576.18	26
Waitotara at Rimunui Station	85.50	71.34	6.83	6.08	14.10	14.44	415.26	19
Waiwhakaiho at Egmont Village	42.73	28.11	3.81	2.41	6.02	4.98	372.21	45
Warea at Coast	8.87	6.32	0.16	0.70	3.07	1.75	47.87	6

2.2 Long-term data patterns

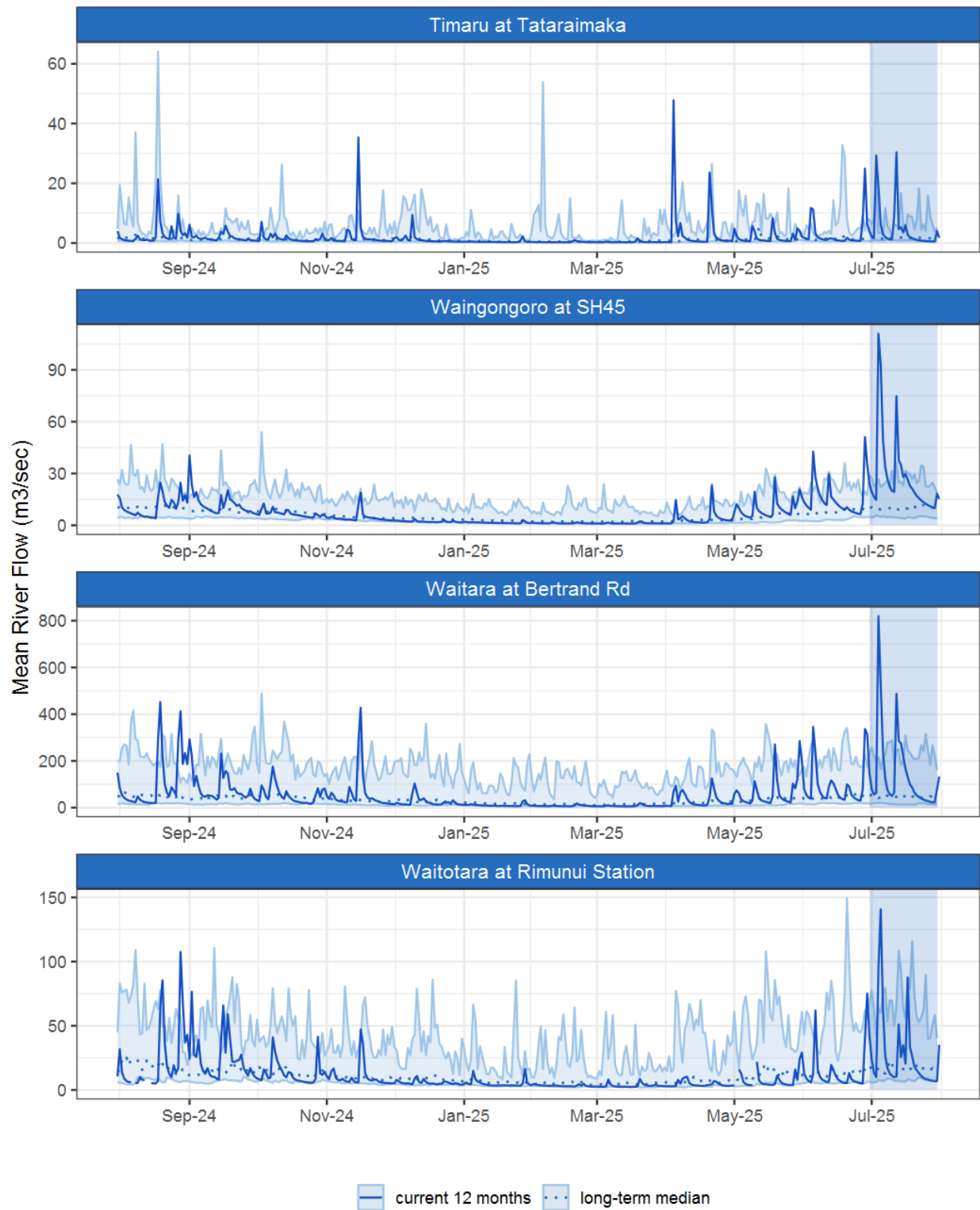


Figure 2.1: Running average river flows for selected sites, set in context of the historic record.

2.3 Monthly Bar Charts

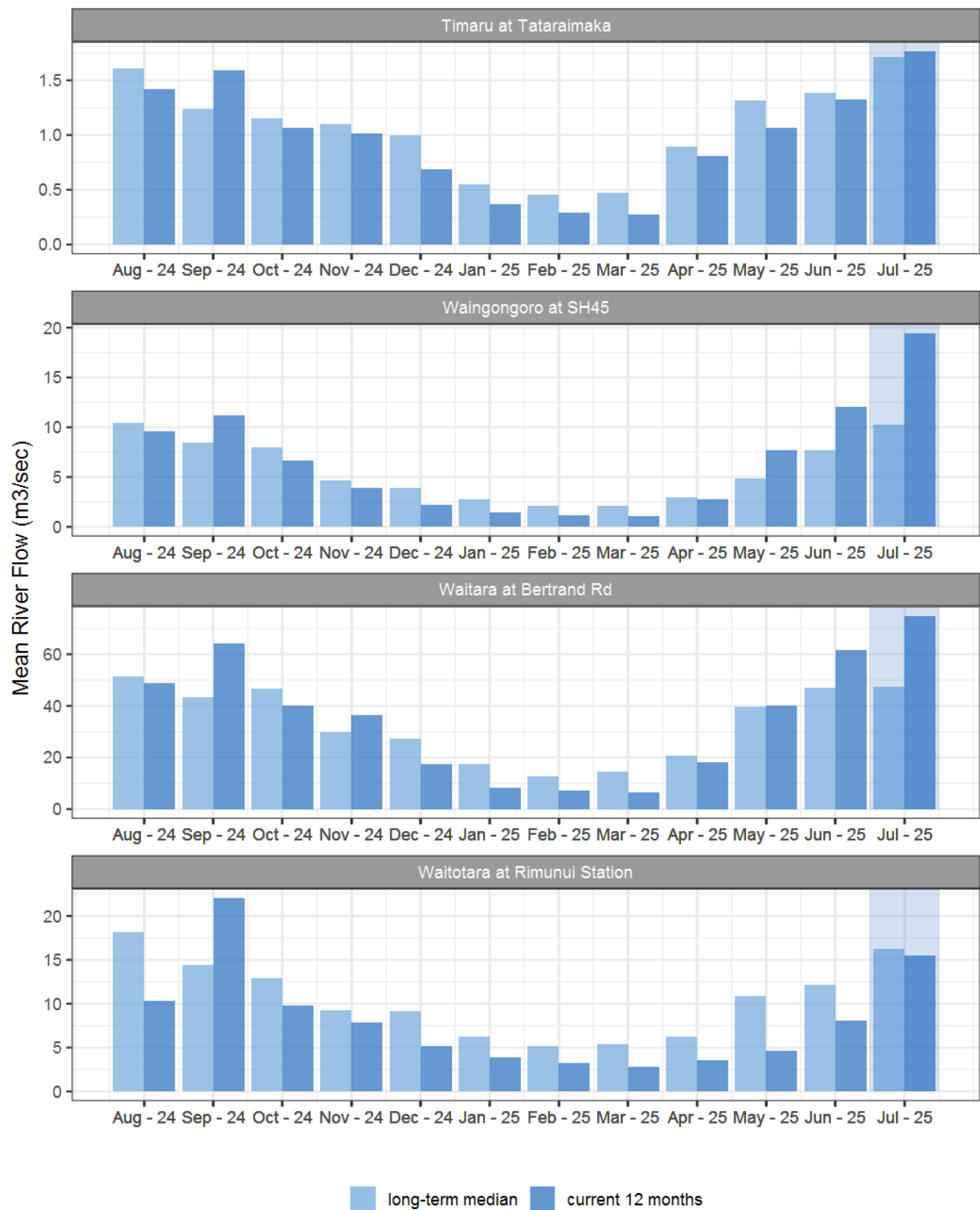


Figure 2.2: Monthly mean river flow for this month and the mean of all previously recorded months.

3. River Temperature

Map 3: July mean water temperature with difference to long-term mean (°C).

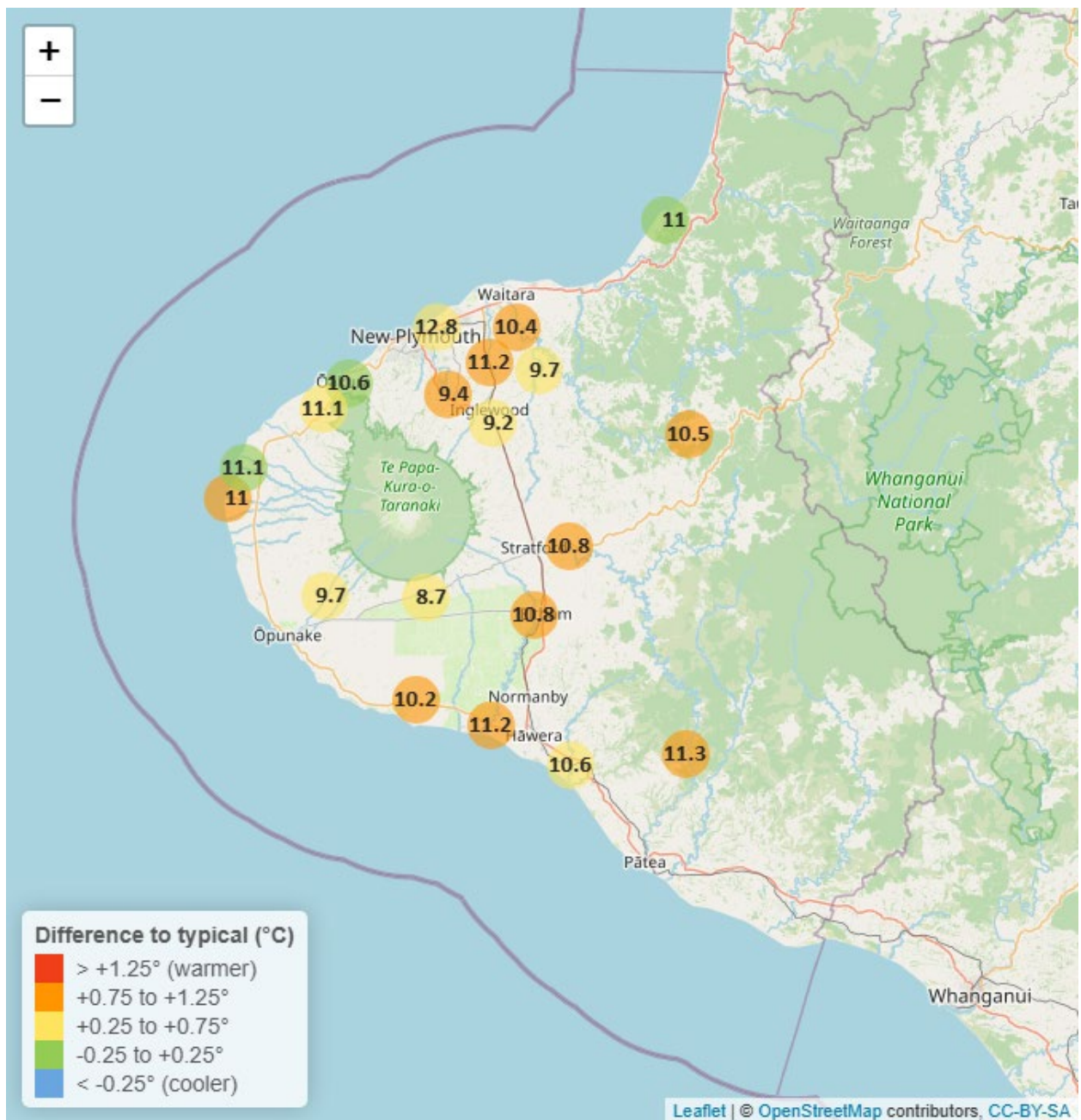


Table 3: Summary of high, low and mean river temperature for July and for July in all preceding years of record.

July 2025 - River Temperature (°C)								
	Highs		Lows		Mean			
River and Site	current month	historic	current month	historic	current month	historic	July maximum	Data years
Kapoaiaia at Lighthouse	12.99	12.54	8.29	6.98	11.00	10.19	14.37	26
Kaupokonui at Glenn Rd	11.86	11.23	7.58	6.61	10.15	9.34	12.41	31
Manganui at Everett Park	11.68	11.34	6.72	6.90	9.68	9.42	12.44	16
Mangaone 3 at Stub Rd	14.46	13.69	10.97	10.16	12.84	12.10	15.04	5
Mangawheroiti Above Intake W.W	10.51	9.49	6.41	6.47	8.66	8.20	10.86	12
Matau at Woolshed	12.11	11.50	6.13	7.07	10.50	9.51	12.64	7
Ngatoro at SH3	11.30	10.36	6.60	5.67	9.19	8.49	12.18	23
Oakura at Victoria Rd	12.63	12.00	7.77	8.04	10.56	10.39	13.24	6
Patea at McColls Bridge	11.91	11.52	10.84	9.69	11.31	10.51	12.11	11
Patea at Skinner Rd	12.55	11.29	8.14	7.26	10.76	9.64	13.45	21
Tangahoe below Railway Bridge	12.47	11.73	7.38	7.15	10.56	9.98	13.12	7
Timaru at Tataraimaka	13.14	12.04	7.92	7.92	11.06	10.44	13.61	10
Waiaua 2 at Barraclough Opua	11.96	11.39	5.86	6.80	9.66	9.34	13.04	6
Waikaramarama at Bridge	13.12	12.44	8.25	8.08	10.97	10.82	14.15	7
Waingongoro at Eltham Rd	12.15	11.16	8.88	7.29	10.85	9.66	12.72	21
Waingongoro at SH45	12.80	11.77	8.79	7.70	11.18	10.19	13.67	20
Waiongana at SH3a	13.14	11.81	8.36	7.76	11.16	10.16	13.86	14
Waitara at Bertrand Rd	12.41	11.55	7.59	7.00	10.41	9.28	13.01	35
Waiwhakaiho at Egmont Village	11.59	10.60	6.79	6.06	9.42	8.59	12.25	33
Warea at Coast	13.14	12.75	7.96	8.58	11.06	11.00	14.82	6

3.2 Long-term data patterns

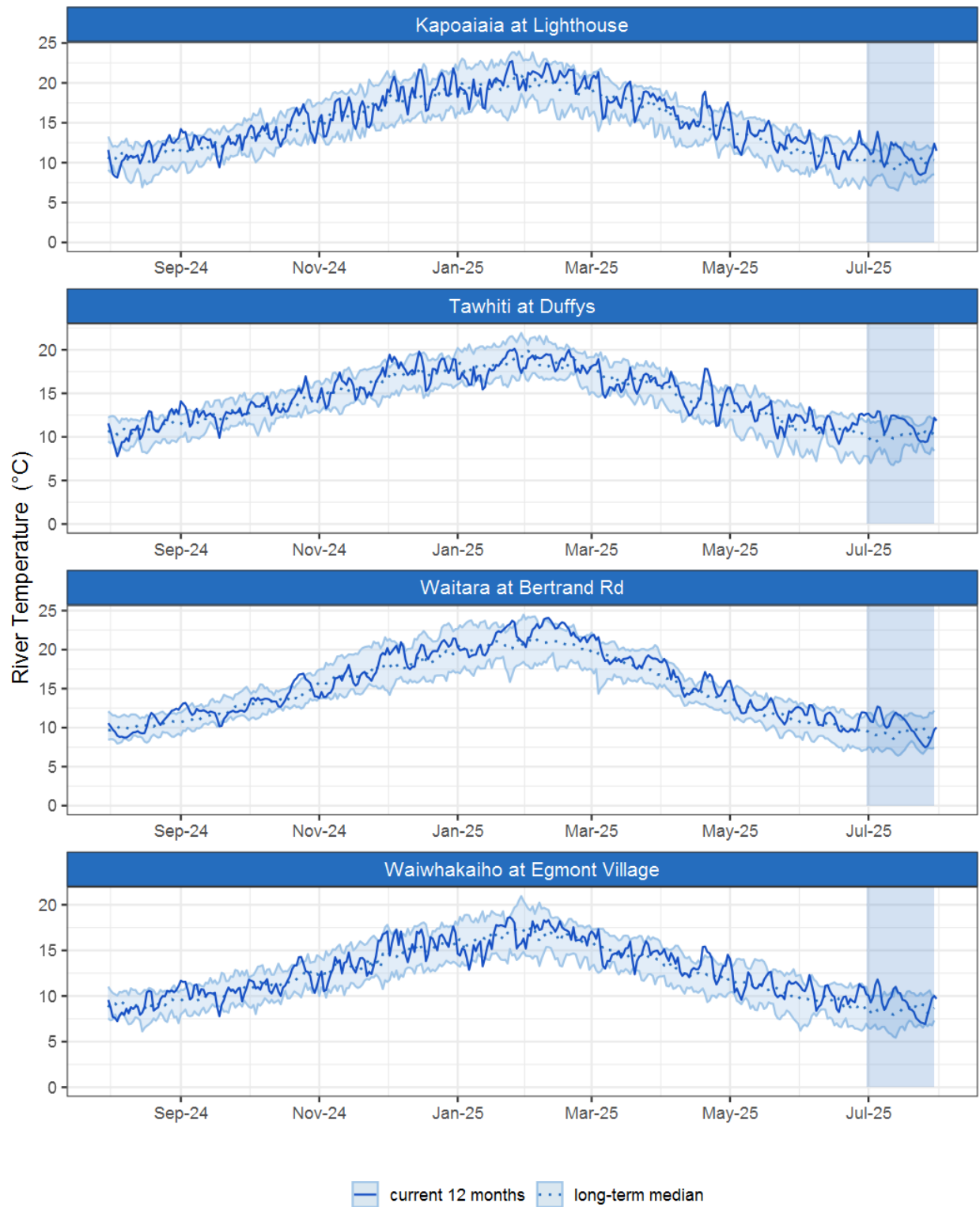


Figure 3.1: Running average river temperature for selected sites, set in context of the historic record.

3.3 Monthly Bar Charts

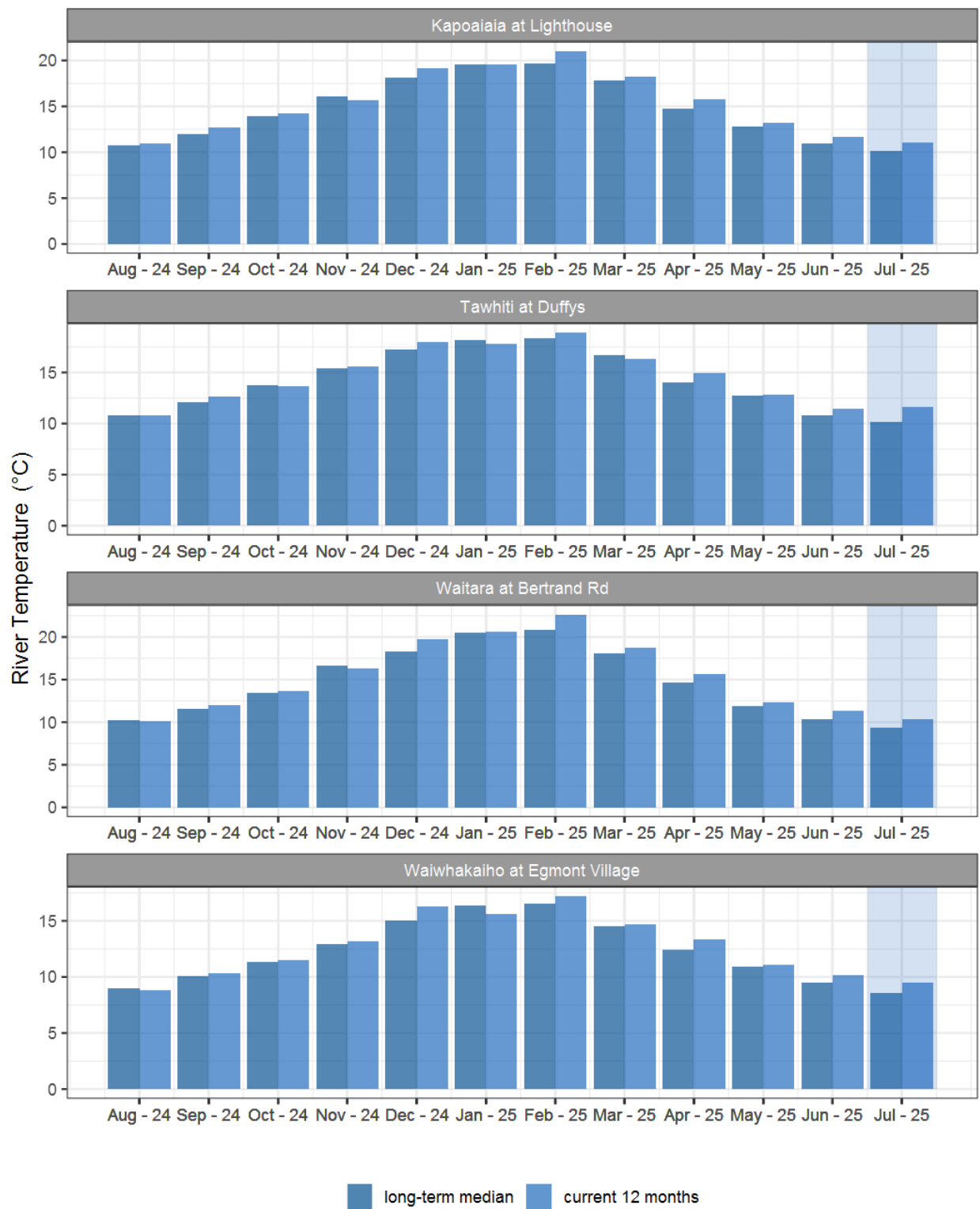


Figure 3.2: Monthly mean river temperature for this month and the mean of all previously recorded months.

4. Air Temperature

Map 4: July mean air temperature with difference to long-term mean (°C).

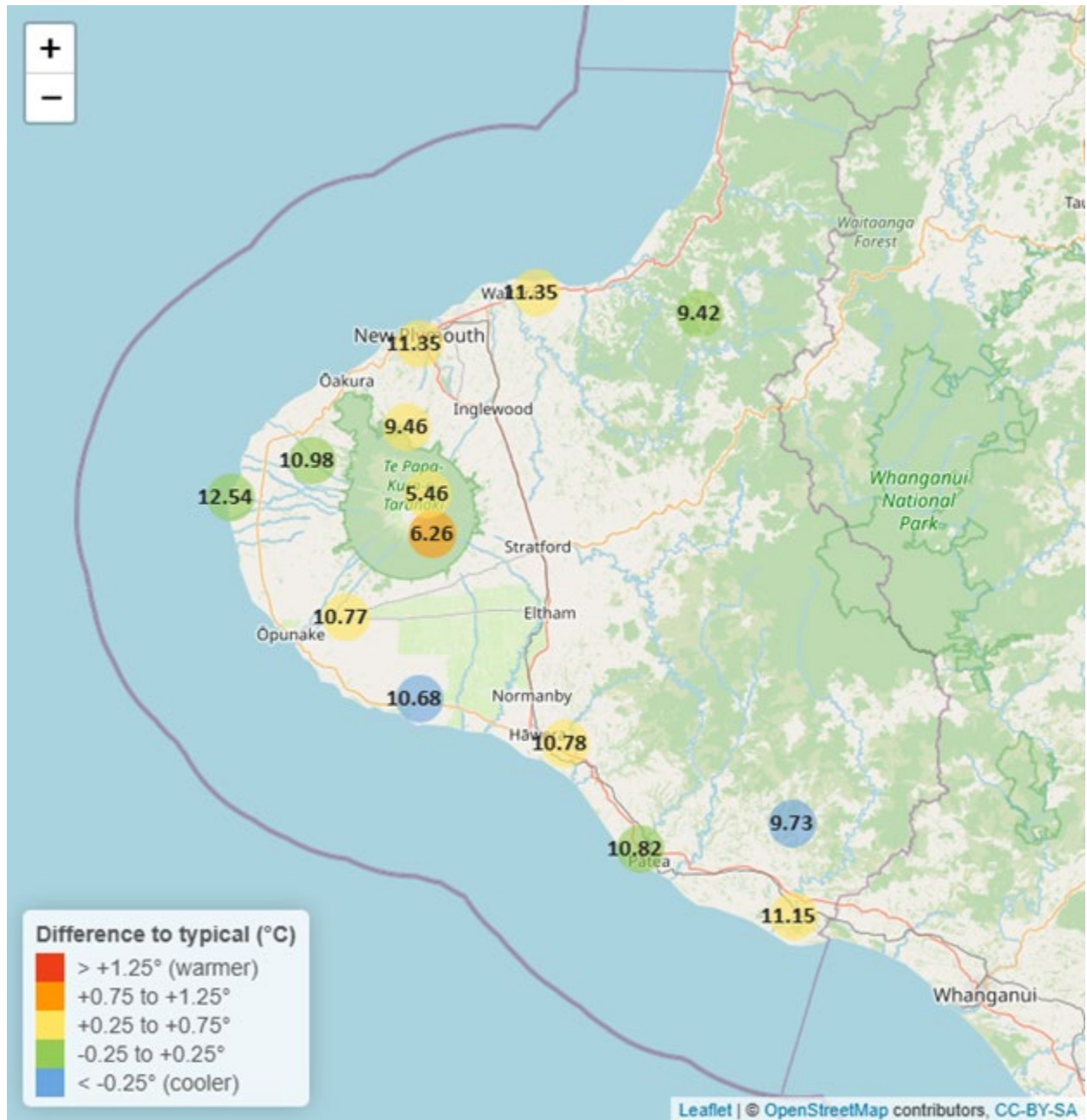


Table 4: Summary of high, low and mean air temperature for July and for July in all preceding years of record.

July 2025 - Air Temperature (°C)								
	Highs		Lows		Mean			
Site	current month	historic	current month	historic	current month	historic	July maximum	Data years
Brooklands Zoo at New Plymouth	15.88	15.33	5.16	5.22	11.35	11.01	17.73	13
Dawson Falls	10.17	9.00	1.59	0.89	6.26	5.30	12.10	10
Kapoaiaia at Lighthouse	15.64	14.87	5.72	6.08	12.54	12.37	17.34	13
Kaupokonui at Glenn Rd	14.87	14.75	2.78	4.65	10.68	11.14	18.07	10
Mangorei Upper at Forest Hill	12.81	12.07	4.60	4.43	9.46	9.06	14.51	8
Motunui M39 at Weston W3	14.94	14.55	4.38	5.04	11.35	11.08	16.40	8
North Taranaki at Camphouse	9.47	8.59	1.96	0.68	5.46	5.08	11.16	10
Patea at Bore 3	15.25	14.57	3.63	5.14	10.82	10.89	17.42	12
Stony at Mangatete Bridge	14.41	14.03	4.42	5.62	10.98	10.77	15.46	9
Taungatara at Eltham Rd	15.62	13.99	3.83	4.40	10.77	10.41	17.91	10
Tawhiti at Duffys	15.28	14.51	-0.48	1.40	10.78	10.51	17.35	12
Uruti at Kaka Rd	13.36	13.00	3.94	4.61	9.42	9.40	15.07	7
Waitotara at Hawken Rd	15.82	14.98	3.12	5.11	11.15	10.90	17.97	9
Weraweraonga at Mangawhio Rd	15.53	14.98	0.84	2.83	9.73	10.08	17.52	8

4.2 Long-term data patterns

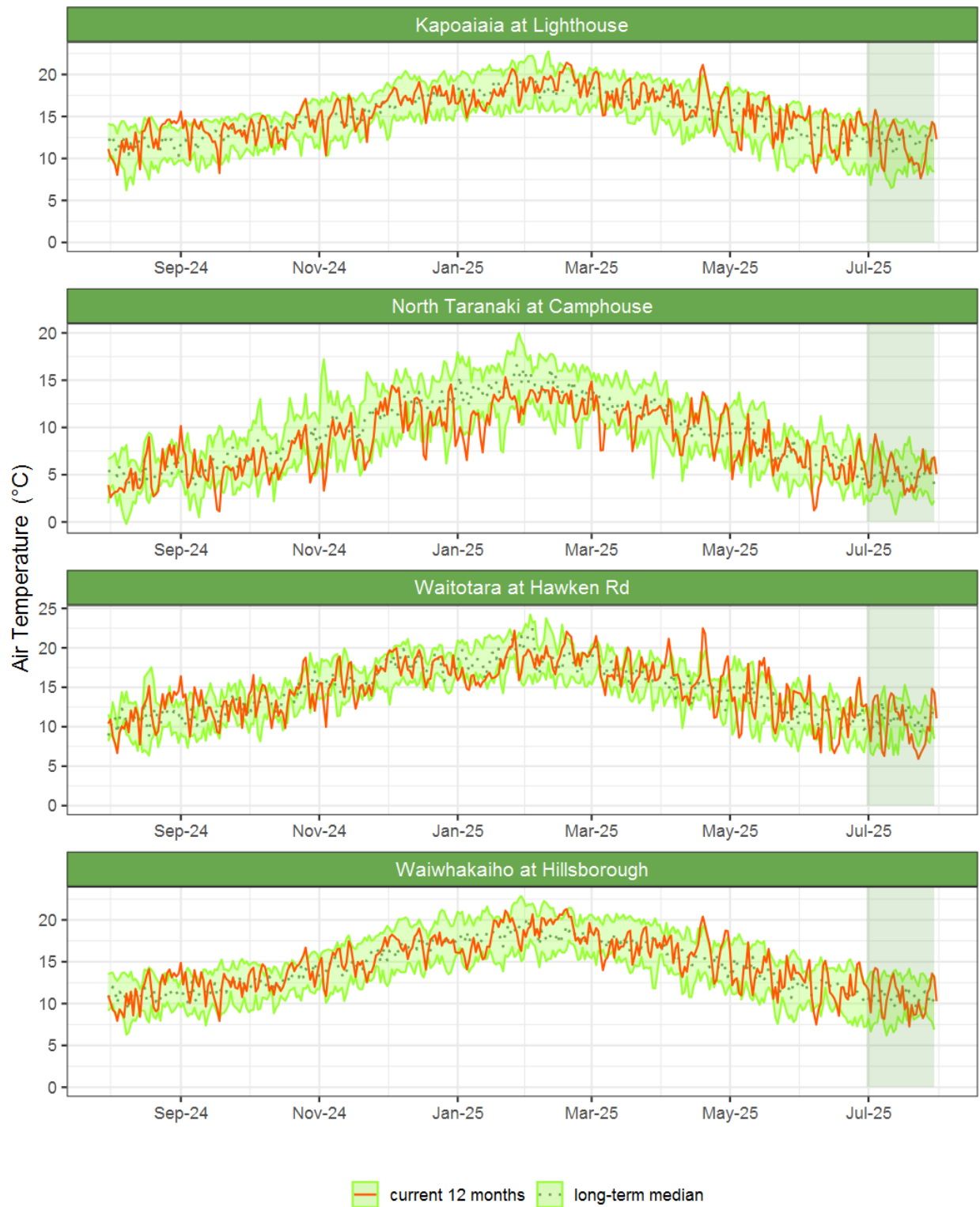


Figure 4.1: Running average air temperature for selected sites, set in context of the historic record.

4.3 Monthly Bar Charts

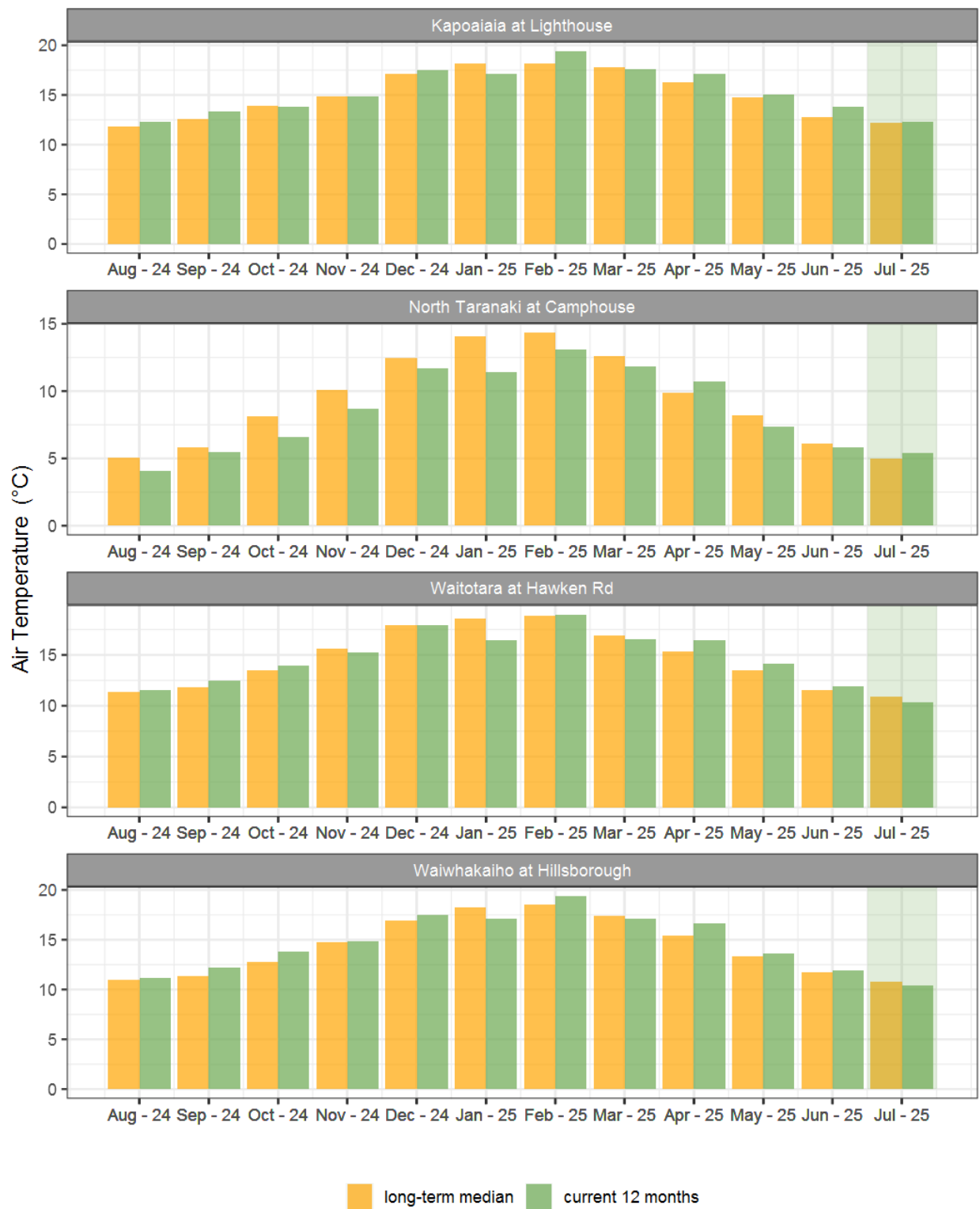


Figure 4.2: Monthly mean air temperature for July and the mean of all previously recorded months.

5. Soil Moisture

Map 5: July mean soil moisture content (%).

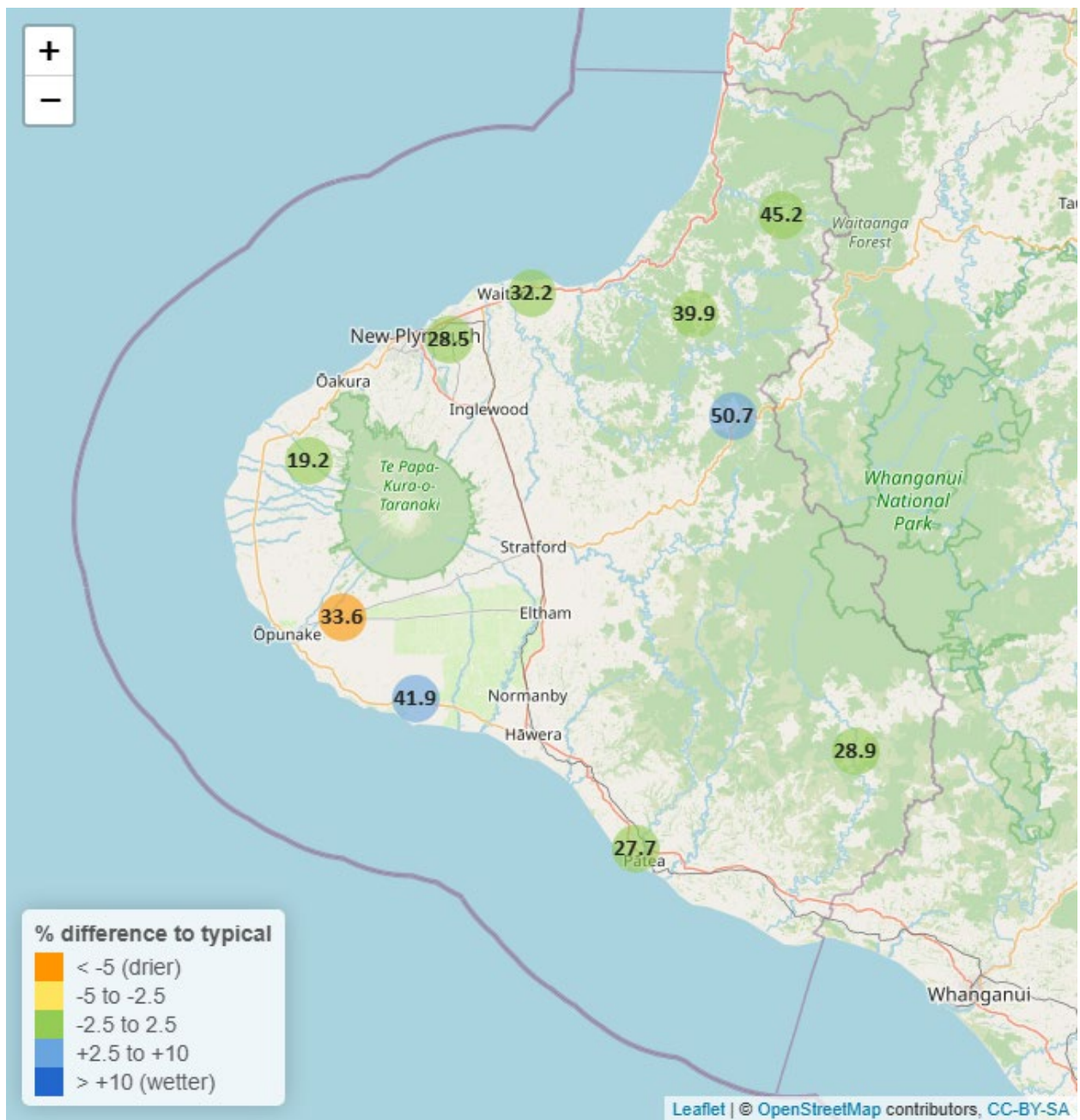


Table 5: Summary of high, low and mean soil moisture for July and for July in all preceding years of record.

July 2025 - Soil Moisture (%)								
	Highs		Lows		Mean			
Site	current month	historic	current month	historic	current month	historic	July maximum	Data years
Kaupokonui at Glenn Rd	45.57	45.68	37.39	32.50	41.90	37.53	47.90	14
Kotare at OSullivans	51.01	51.54	42.65	37.80	45.24	44.21	59.88	13
Motunui M39 at Weston W3	34.07	33.06	30.90	28.54	32.23	30.97	35.70	12
Patea at Bore 3	29.82	34.45	25.87	25.69	27.71	29.12	32.66	9
Pohokura Saddle	53.72	52.08	47.38	40.47	50.70	46.09	54.96	11
Stony at Mangatete Bridge	23.66	25.99	17.34	14.54	19.21	20.95	27.87	9
Taungatara at Eltham Rd	37.21	47.60	31.92	29.93	33.56	39.62	43.19	12
Uruti at Kaka Rd	42.83	46.71	38.25	39.94	39.85	42.28	45.35	14
Waitotara at Rimunui Station	31.37	31.96	27.42	27.07	28.85	29.23	34.74	8
Waiwhakaiho at Hillsborough	32.14	34.17	25.96	26.62	28.47	29.90	35.54	13

5.2 Long-term data patterns



Figure 5.1: Running average soil moisture for selected sites, set in context of the historic record.

5.3 Monthly Bar Charts

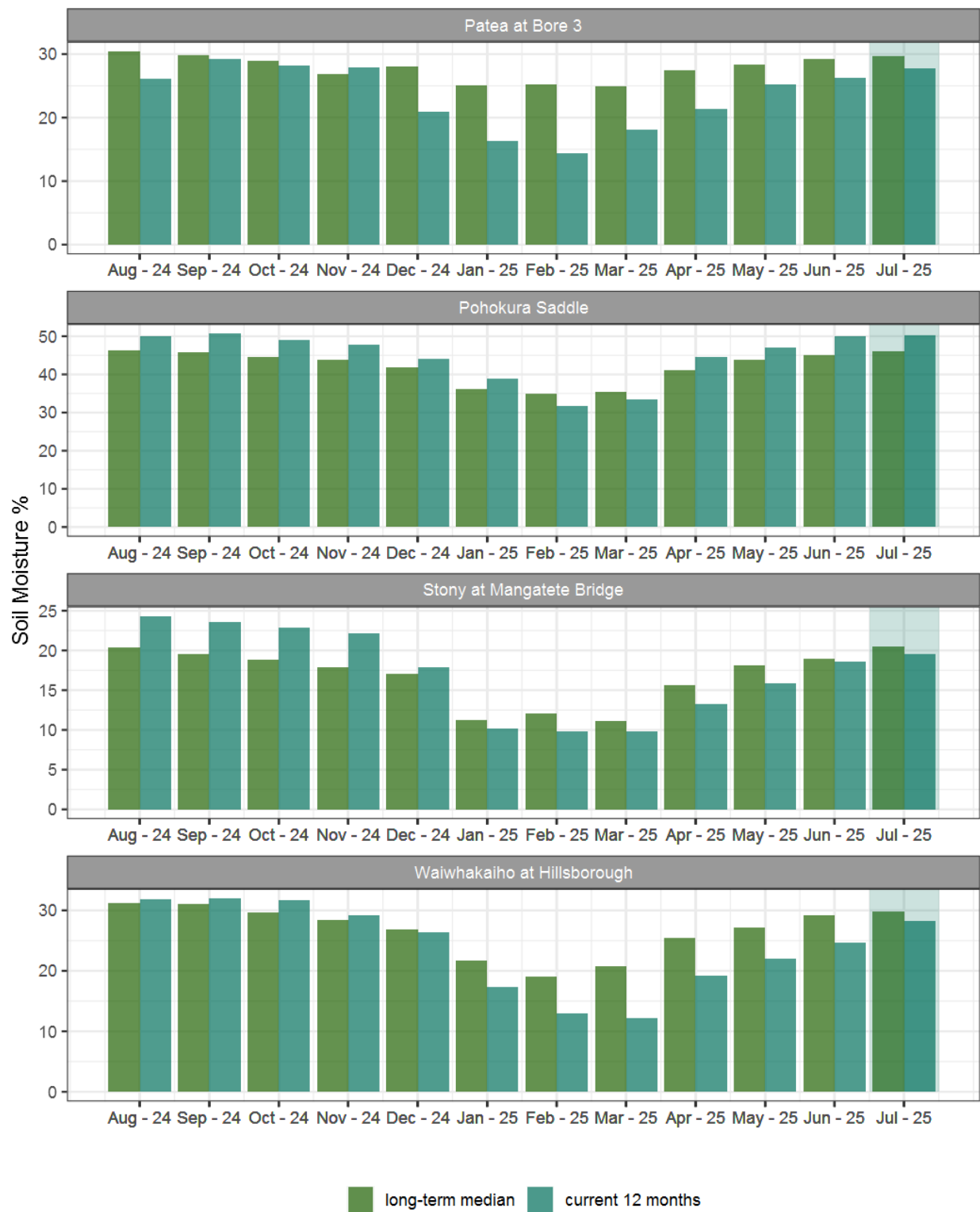


Figure 5.2: Monthly mean soil moisture for this month and the mean of all previously recorded months.

6. Soil Temperature

Map 6: July mean soil temperatures with difference to long-term mean (°C).

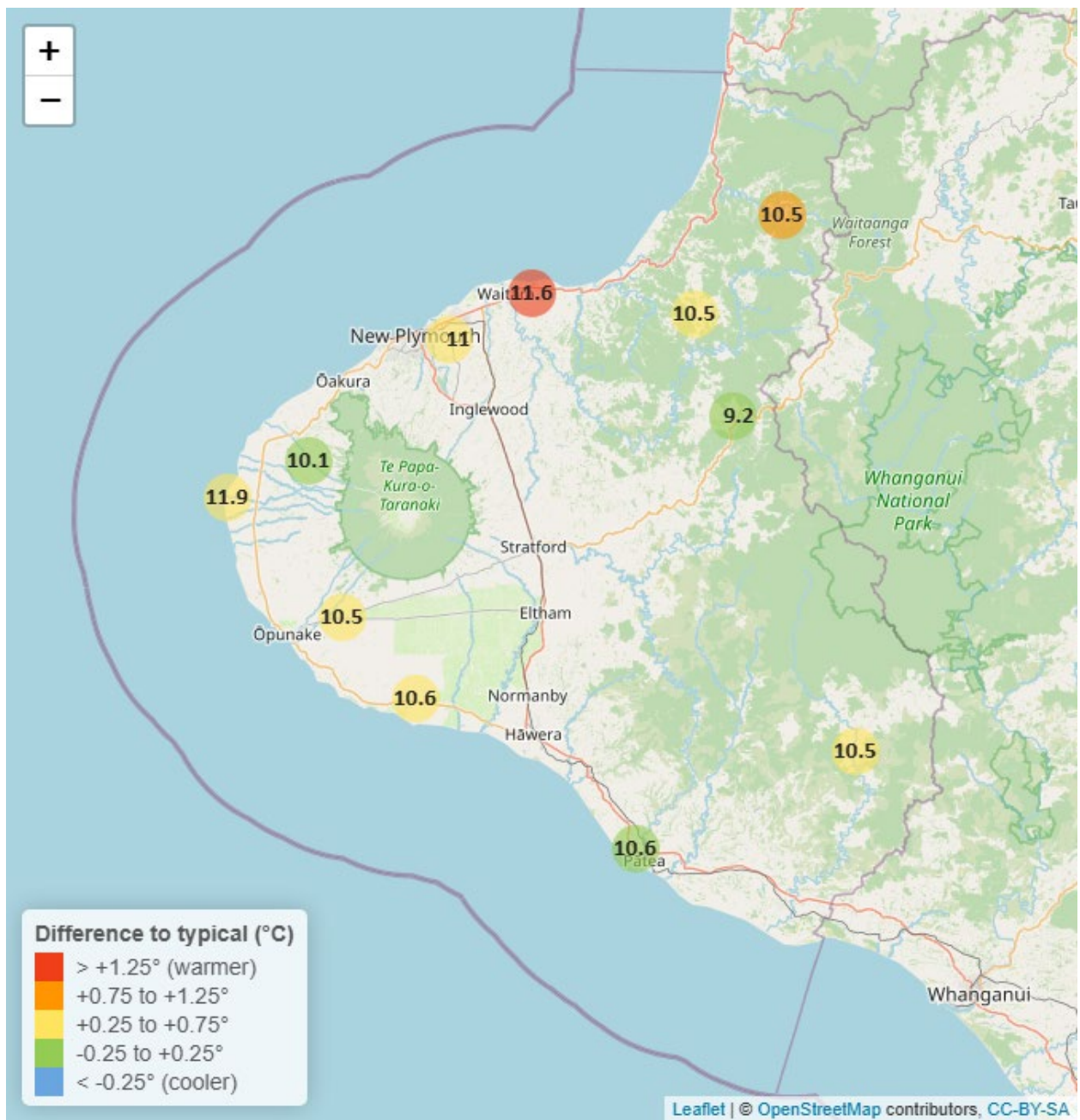


Table 6: Summary of high, low and mean soil temperature for July and for July in all preceding years of record.

July 2025 - Soil Temperatures (°C)								
	Highs		Lows		Mean			
Site	current month	historic	current month	historic	current month	historic	July maximum	Data years
Kapoaiaia at Lighthouse	14.79	13.35	8.13	8.69	11.9	11.31	16.22	13
Kaupokonui at Glenn Rd	12.41	11.86	7.94	8.40	10.6	10.30	13.14	14
Kotare at OSullivans	11.95	11.21	7.97	6.40	10.5	9.40	12.47	13
Motunui M39 at Weston W3	13.99	12.23	8.50	7.75	11.6	10.25	14.31	12
Patea at Bore 3	12.32	12.04	8.05	8.87	10.6	10.60	12.94	9
Pohokura Saddle	11.13	10.60	6.86	7.35	9.2	9.23	11.82	11
Stony at Mangatete Bridge	12.36	11.85	6.81	7.70	10.1	9.96	13.19	8
Taungatara at Eltham Rd	12.56	11.78	7.80	8.30	10.5	10.17	13.30	12
Uruti at Kaka Rd	11.71	11.03	8.82	7.06	10.5	9.88	12.00	14
Waitotara at Rimunui Station	12.08	11.75	7.63	8.05	10.5	10.19	12.57	8
Waiwhakaiho at Hillsborough	12.83	12.00	8.88	8.47	11.0	10.35	13.41	13

6.2 Long-term data patterns

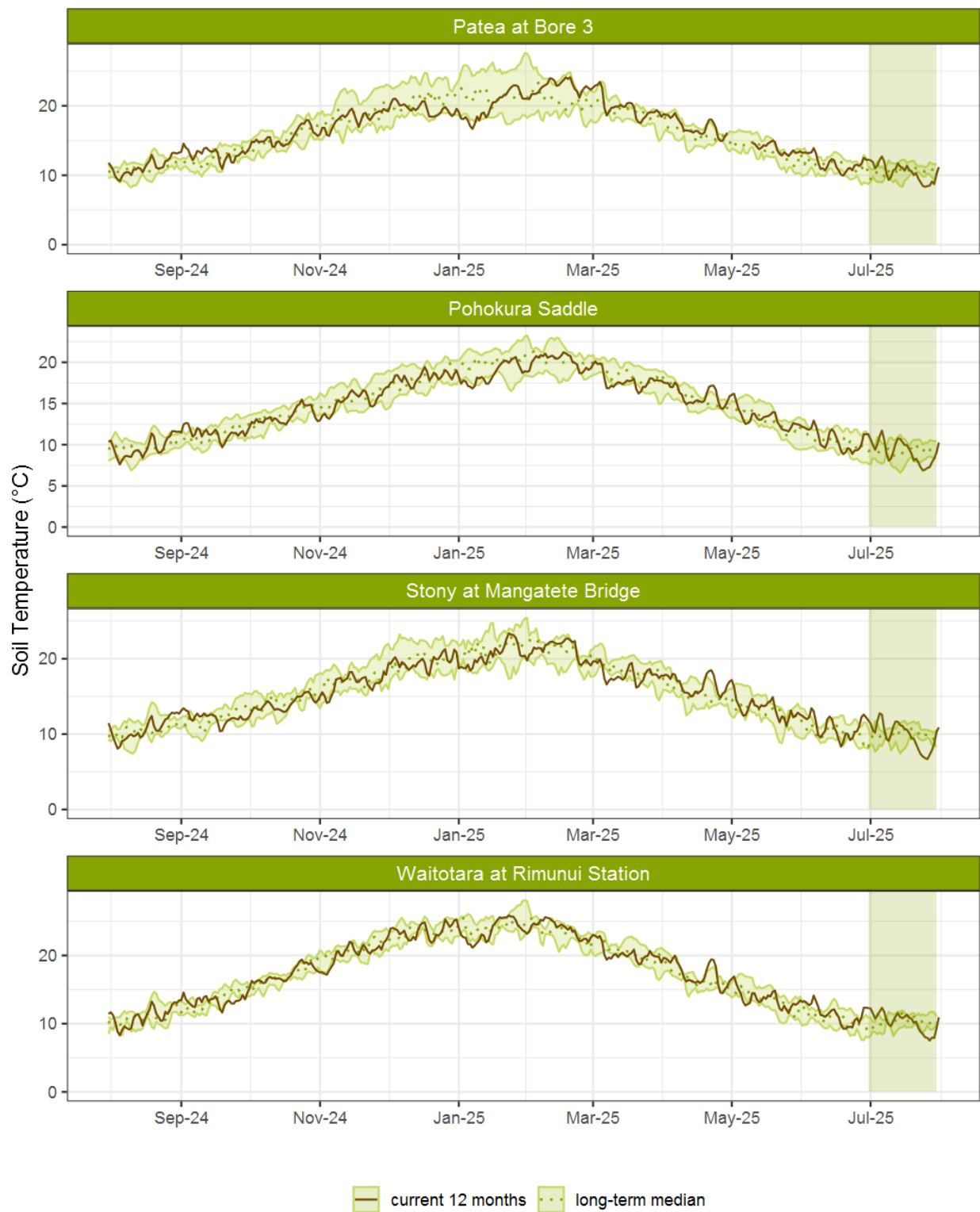


Figure 6.1: Running average soil temperature for selected sites, set in context of the historic record.

6.3 Monthly Bar Charts

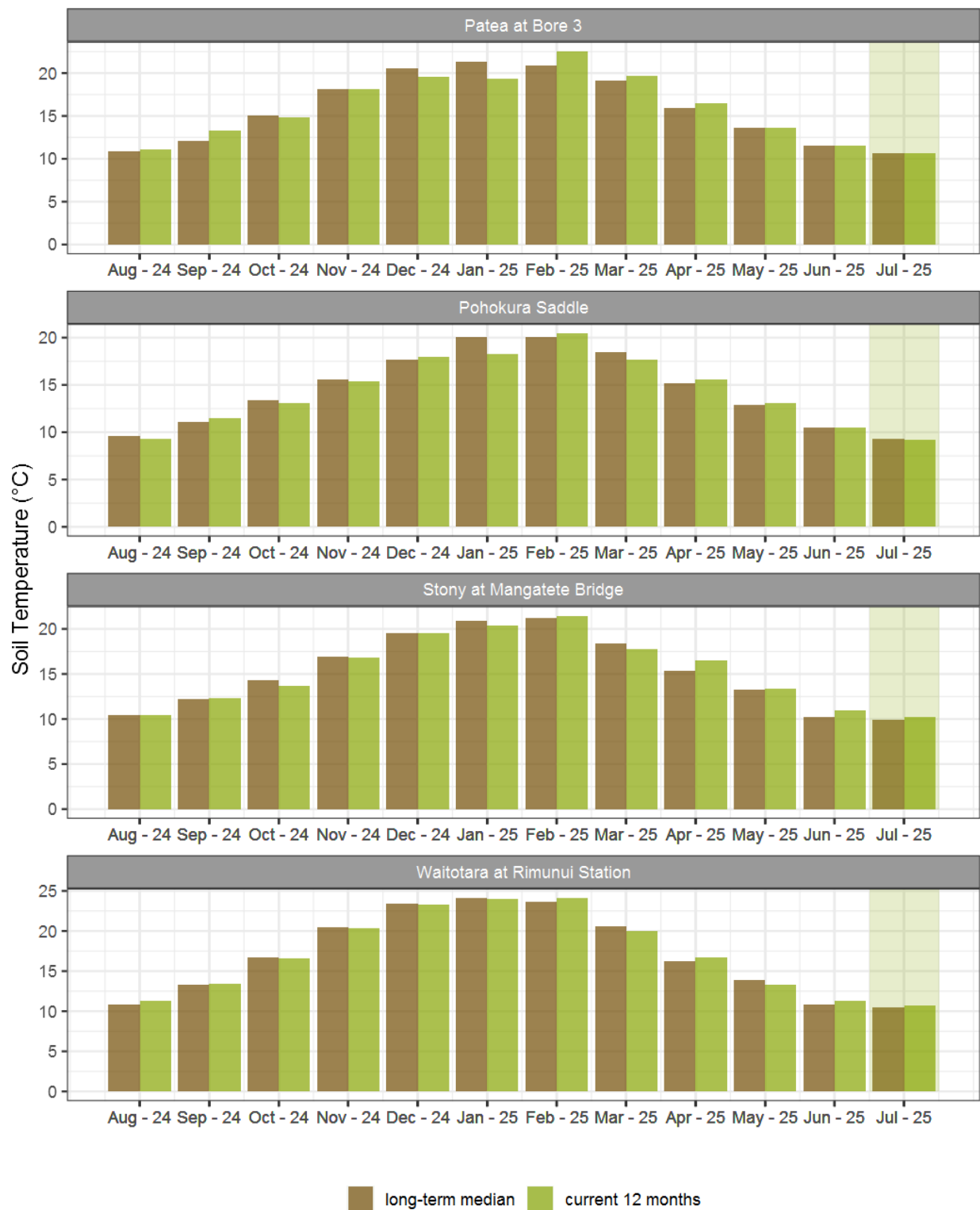


Figure 6.2: Monthly mean soil temperature for this month and the mean of all previously recorded months.

7. Wind Speed and Maximum Gusts

Map 7: July mean of wind speed with difference to long-term values (km/hr).

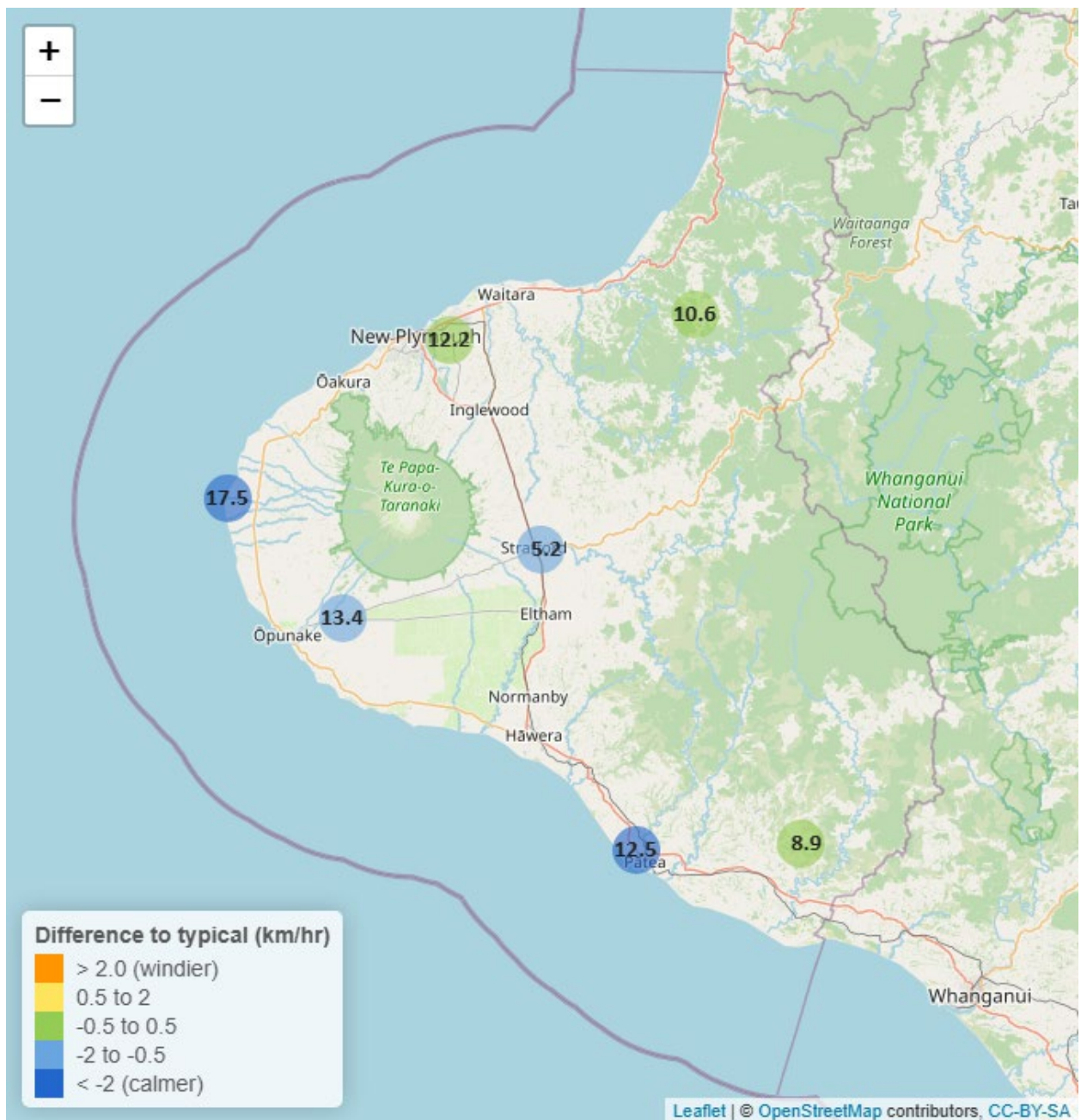


Table 7: Summary of high, low and mean wind speed for July and for July in all preceding years of record.

July 2025 - Wind Speed (average) - (km/hr)								
	Highs		Lows		Mean			
Site	current month	historic	current month	historic	current month	historic	July maximum	Data years
Kapoaiaia at Lighthouse	42.70	43.63	6.84	6.11	17.5	19.94	65.43	26
Patea at Bore 3	34.37	42.87	6.19	6.72	12.5	17.29	55.97	9
Patea at Stratford	17.99	18.70	2.63	2.40	5.2	6.51	29.40	19
Taungatara at Eltham Rd	30.30	34.08	6.48	6.42	13.4	15.10	53.97	9
Uruti at Kaka Rd	26.90	25.61	2.73	3.32	10.6	10.09	41.40	26
Waitotara at Ngutuvera	21.58	23.96	3.25	2.05	8.9	9.43	36.13	27
Waiwhakaiho at Hillsborough	27.95	29.02	4.22	4.23	12.2	12.53	41.99	8

Table 8: Summary of high, low and maximum wind gusts for July and for July in all preceding years of record.

July 2025 - Wind Gusts (Maximum) - (km/hr)								
	Highs		Lows		Mean			
Site	current month	historic	current month	historic	current month	historic	July maximum	Data years
Kapoaiaia at Lighthouse	71.28	85.90	18.72	21.70	40.3	48.50	88.20	25
Patea at Bore 3	83.20	85.50	18.40	21.40	35.4	46.90	83.60	9
Patea at Stratford	54.36	65.52	14.76	15.48	25.2	34.56	67.32	19
Taungatara at Eltham Rd	96.50	88.30	21.60	21.60	39.9	44.20	100.60	9
Uruti at Kaka Rd	86.40	76.68	23.76	19.44	40.3	38.90	93.96	25
Waitotara at Ngutuvera	80.28	75.24	21.24	16.56	37.4	39.60	86.04	27
Waiwhakaiho at Hillsborough	70.50	71.80	15.80	20.40	39.5	44.20	76.20	8

7.2 Long-term data patterns

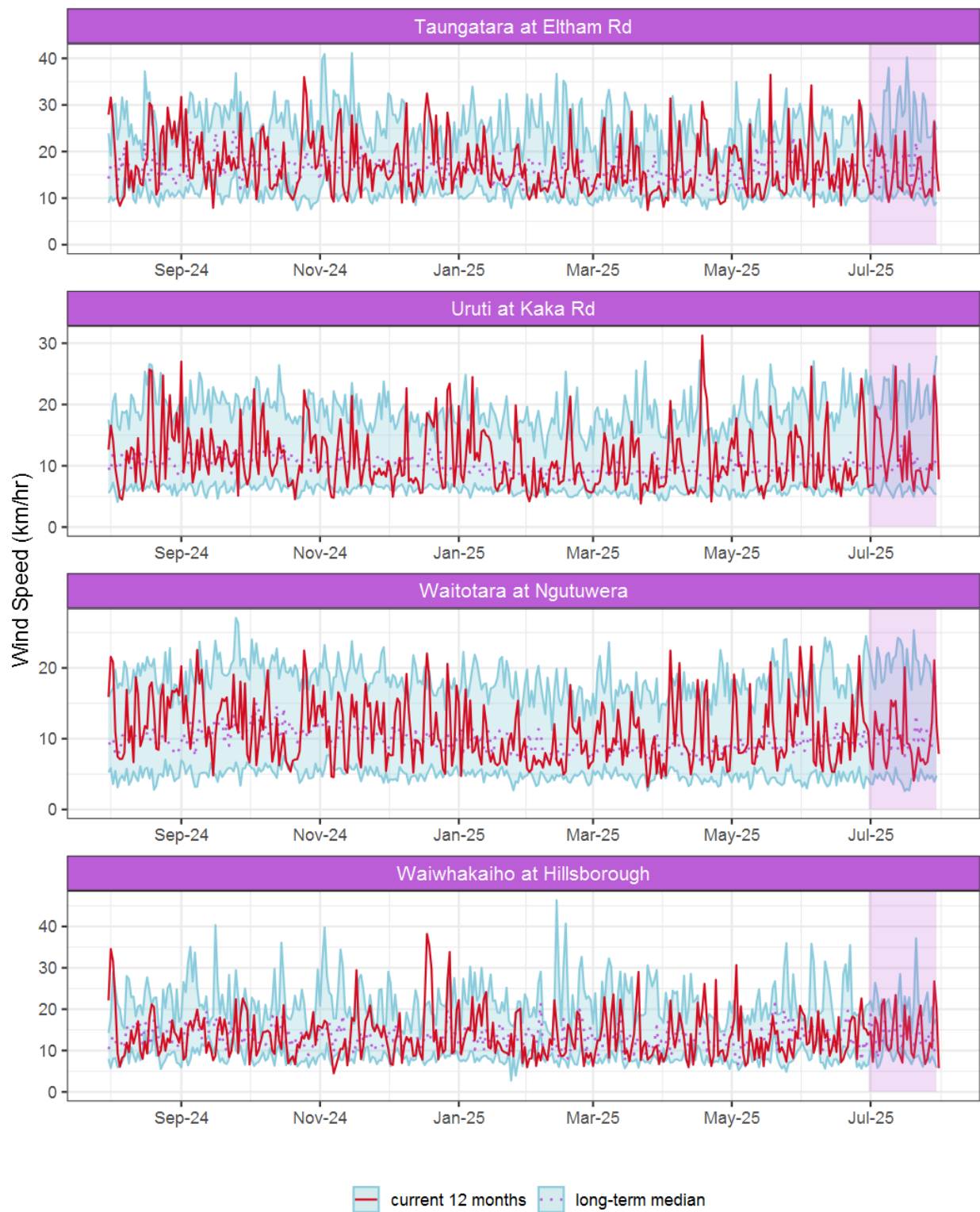


Figure 7.1: Running average wind speed (km/hr) for selected sites, set in context of the historic record.

7.3 Monthly Bar Charts

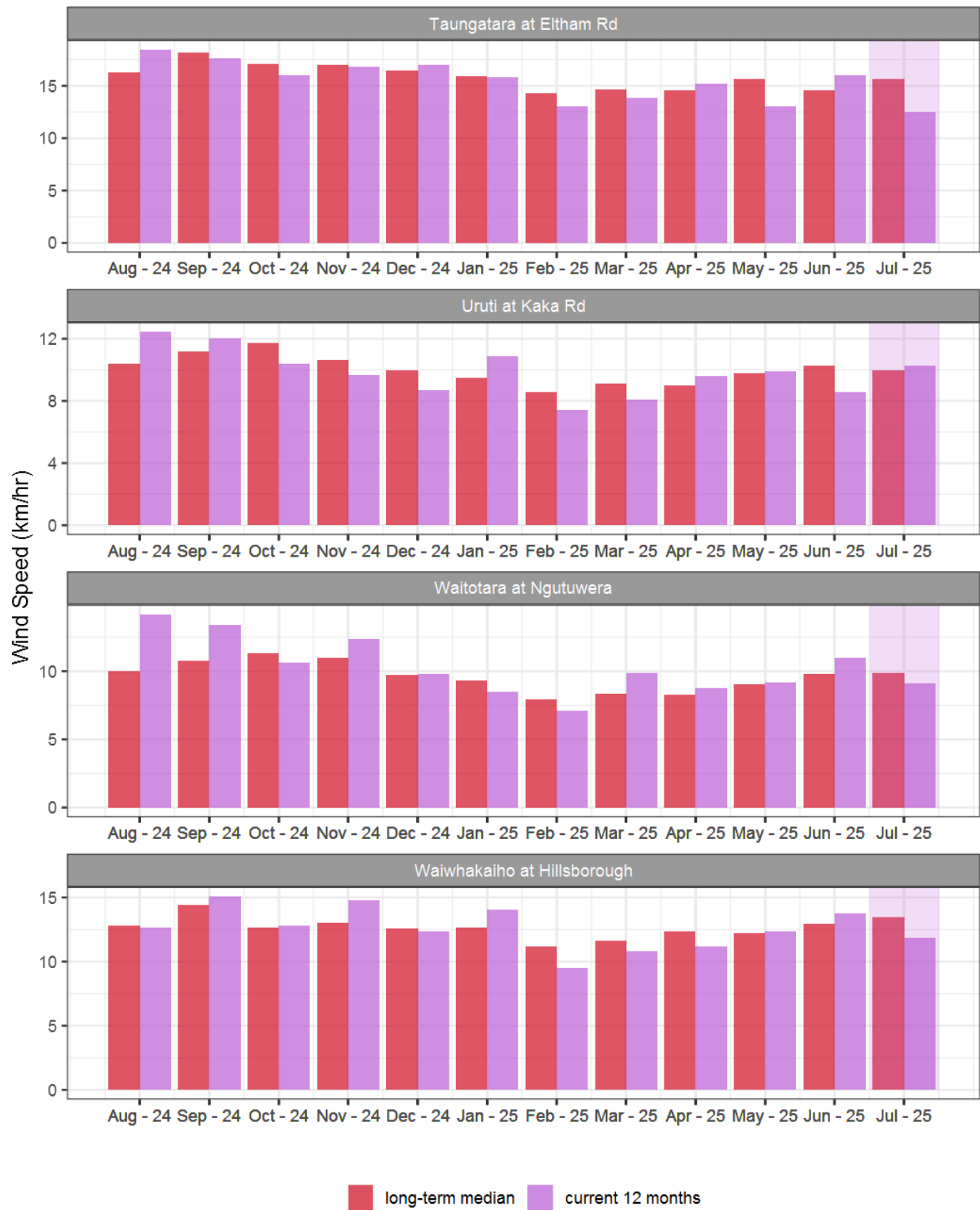


Figure 7.2: Monthly mean wind speed (km/hr) for selected sites, relative to the mean of all previously recorded months.

7.4 Wind roses for July 2025

Average windspeed

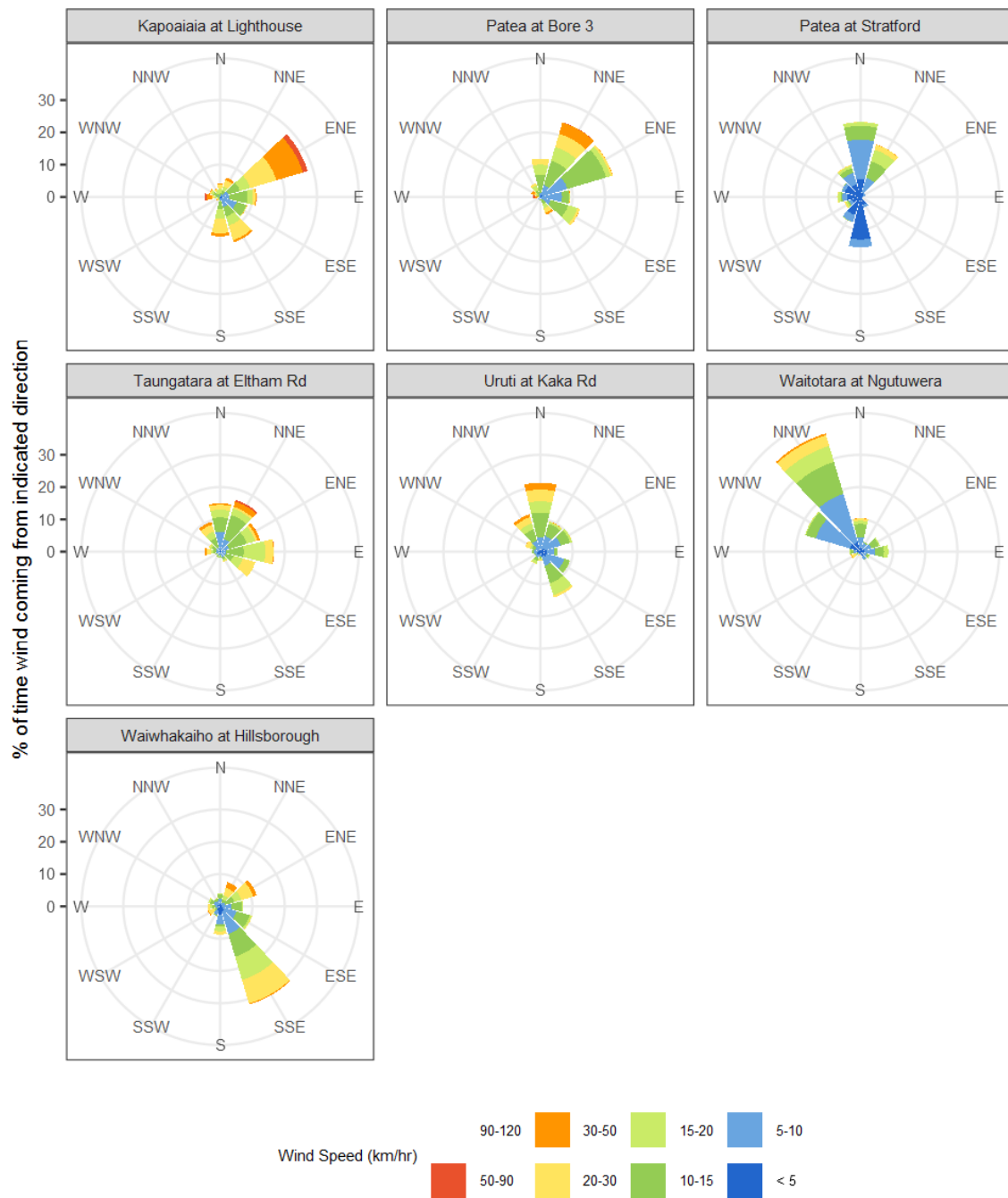


Figure 7.3: Wind roses for July for average wind speed (km/hr).

Maximum gust strength

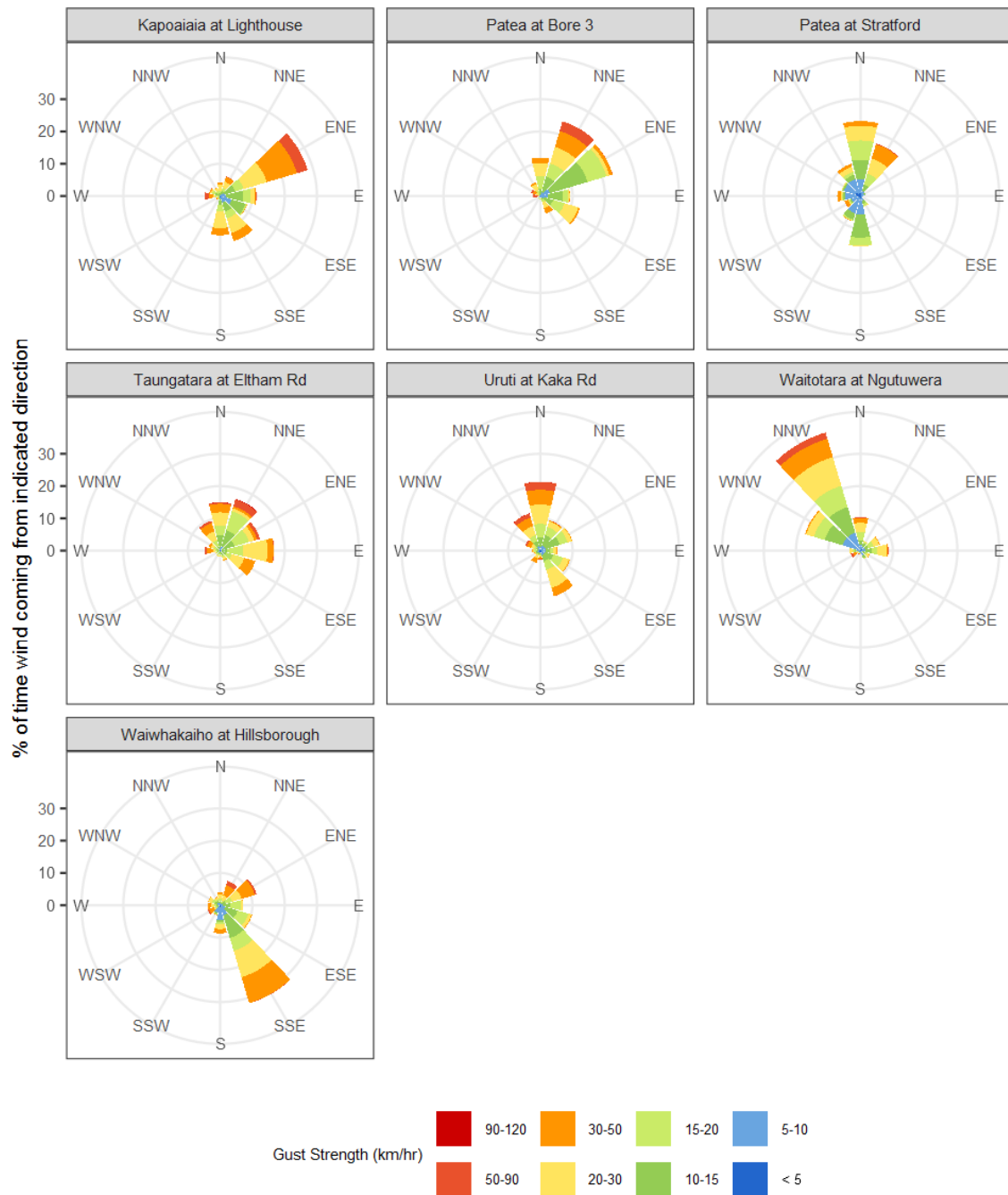


Figure 7.4: Wind roses for July for maximum wind gust (km/hr).

Summary of month's conditions

Rainfall

On average July rainfall was 341mm, 70% more than usual, ranging from 4% less rain at Taungatara at Eltham Rd, and 127% more at Brooklands Zoo at New Plymouth.

Year-to-date rainfall is lowest at Waitōtara at Hawken Rd with 21% less rainfall than normal, Pātea at Stratford has had the highest year to date rainfall with 27% more than normal, on average year-to-date rainfall has been 100% of normal (exactly average) across all rain gauges. Compared to typical full year totals, on average sites have already received 56% of a typical year's rainfall, with the highest value at Pātea at Stratford, 71% of typical year, whereas Waitōtara at Rimunui Station sits at 44% of the typical year's total.

River Flow

Mean river flows for July were 48% greater than typical values, low flows were 66.7% greater, and high flows 91% greater than typical values. The maximum river flow recorded in July was 1253.7m³/sec at Waitara at Bertrand Rd on 3 July.

River Water Temperature

Mean river (non-mountain) water temperatures were 10.7°C, an average of 0.7°C warmer than long-term July values. Nighttime-low water temperatures were on average 0.5°C warmer than historic lows, and day-time high temperatures were on average 0.8°C warmer than historic highs. The maximum river water temperature recorded in July was 16.6°C at Mangorei at Pipebridge on 6 July.

Air Temperature

The average air temperature for the region (excluding Te Maunga sites) was 10.2°C, which is 0.3°C warmer than long-term July averages. Low air temperatures for July were on average 0.7°C cooler than the July average for previous years. Day-time high temperatures were on average 0.7°C warmer than historic highs. The maximum air temperature recorded in July was 18.1°C at Kaupokonui at Glenn Rd on 4 July.

Soil Moisture

The average soil moisture for July across sites in Taranaki region was 34.8%. Soil moistures were on average 0.2% drier than typical July values. On average, low soil moistures were 2.2% wetter than previous lows, and the highs were on average 2.2% drier than previous values for July.

Soil Temperature

July soil temperatures were generally 0.5°C warmer than long-term averages. Average nighttime low soil temperatures were the same as recorded lows, and upper day-time soil temperatures were on average 0.8°C warmer than long-term July highs. The maximum soil temperature recorded in July was 16.2°C at Kapoaiaia at Lighthouse on 4 July.

Wind Speed (average and 10 minute gust)

July average wind speeds were 11.5km/hr, with average gust strength of 36.9km/hr, these were 1.5km/hr lighter, and 5.5km/hr weaker than the long-term average. Average calm weather wind speeds were 0.2km/hr stronger than recorded lows, and windy conditions were on average 2.3km/hr lighter than long-term July highs. The maximum wind gust recorded in July was 100.6km/hr at Taungatara at Eltham Rd on 11 July.

Report date: 7 August 2025.

Supply of environmental data - General terms and conditions

The enclosed information is the highest quality data the Taranaki Regional Council (the Council) is currently able to provide. Some or all of the data being provided may not yet have been audited however, and is therefore subject to change.

As we endeavour to continuously improve our products, we also reserve the right to further amend data where necessary and without notice at any time. As a result, the information supplied to you now may not be the same as that subsequently produced for you or any other requestor.

While the Council has exercised all reasonable skill and care in controlling the contents of the information, you should independently check the information provided if the accuracy of that information is important to you.

Under no circumstances will the Council, its employees or agents be liable in contract, tort or otherwise to compensate you for any loss, injury or damage (including loss of profits or consequential loss) arising directly or indirectly from the supply by the Council or its agents of inadequate, inaccurate or incorrect environmental data.

Any use of the material supplied, for example, by inclusion in a report or a media release, should be accompanied by an acknowledgment of the source of the data. We also request that any outputs generated through the use of the information provided be provided to the Council.