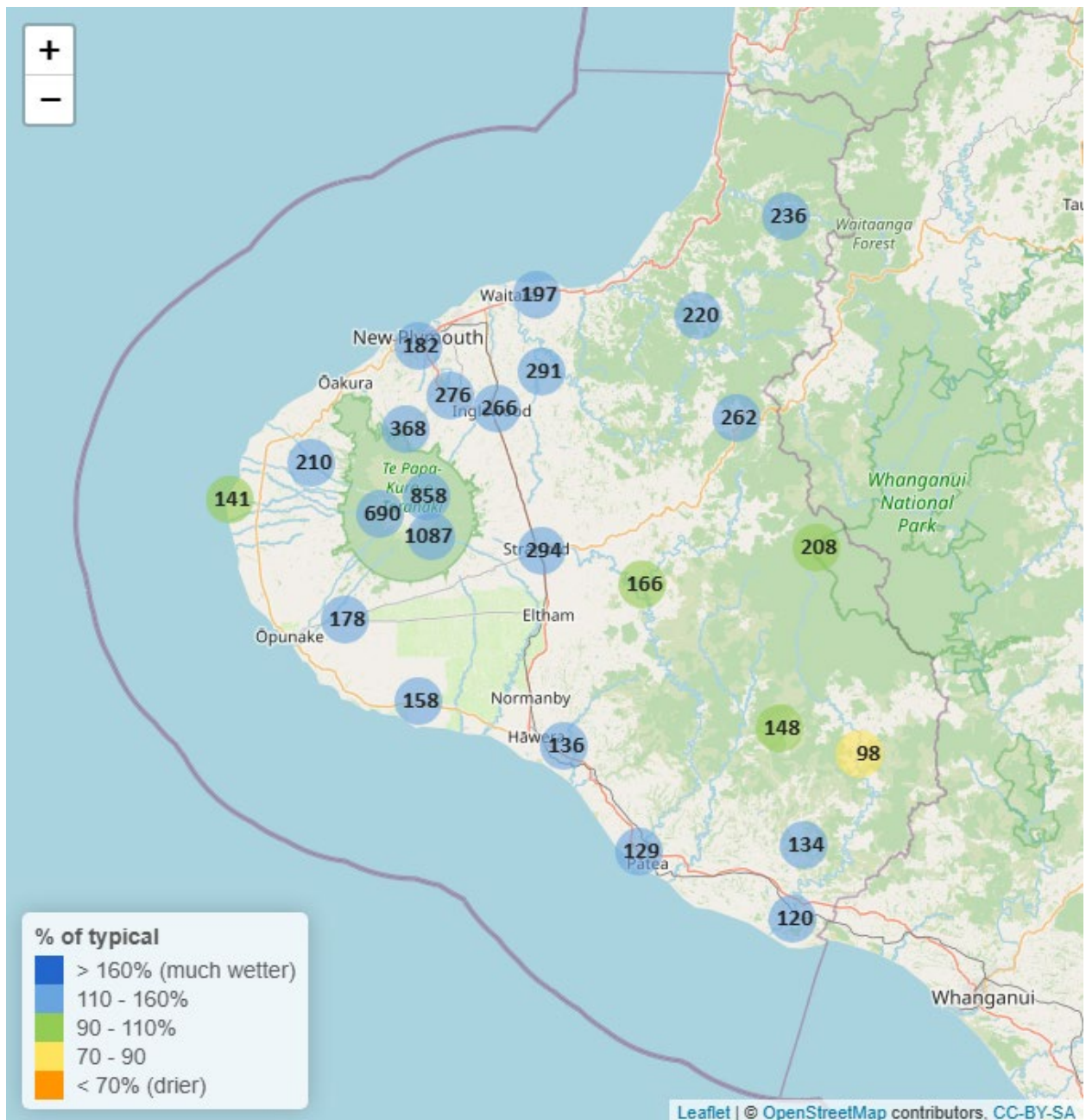


Taranaki Regional Council Monthly Rainfall and Environmental Data Report for June 2025

Note: The data presented here are provisional data only and may change as a result of quality control at a later date.

1. Rainfall

Map 1: June total rainfall (mm) and percentage of long-term mean (colour key).



Map 1a. Total rainfall 1 January to end June (mm) and percentage of long-term mean (colour key).

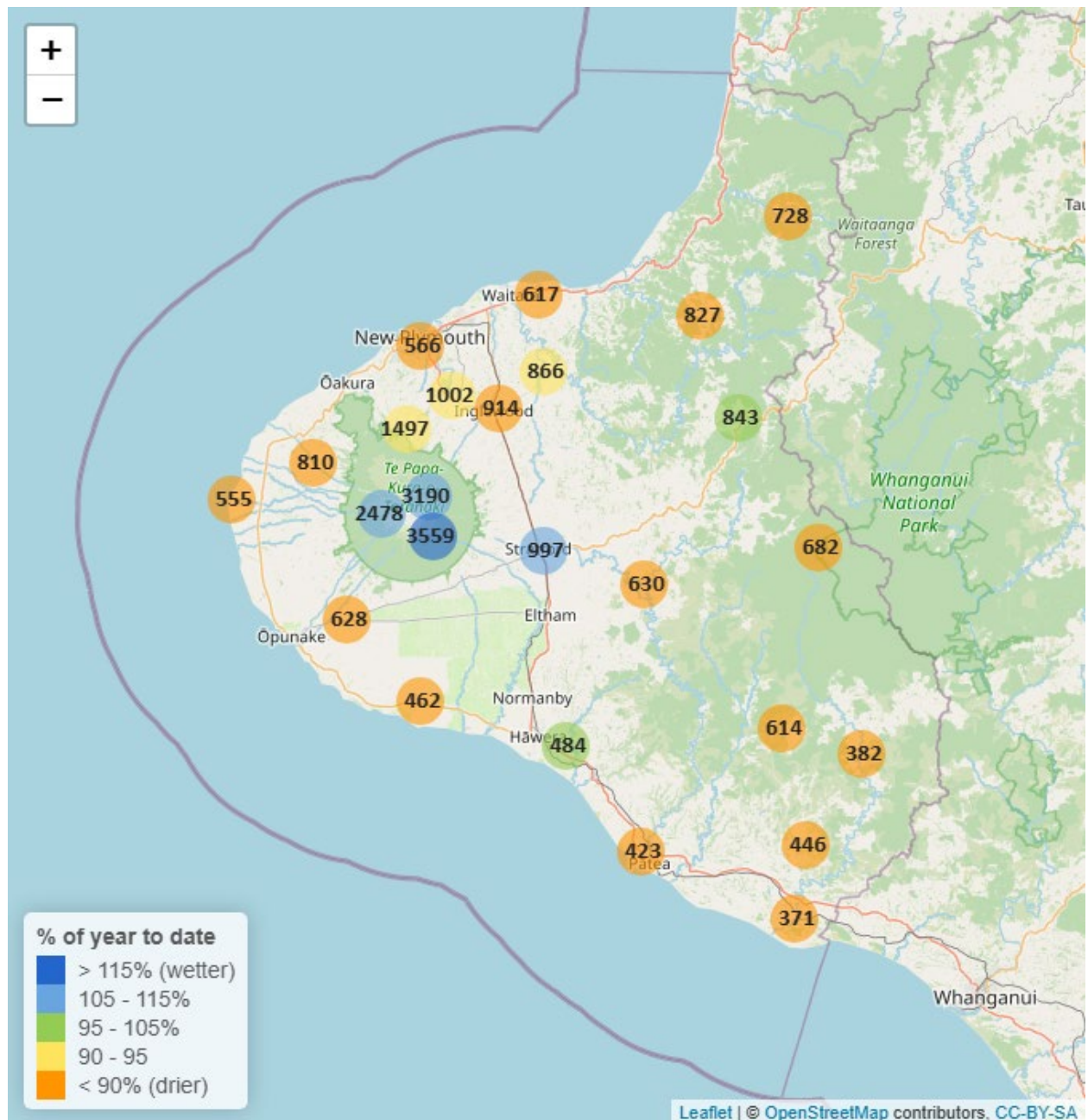


Table 1: Rainfall June and year to date totals for rain gauge sites in Taranaki.

	June			Year to Date			
Rain gauge	# days with rain	Total rain (mm)	% of typical month	Total to date (mm)	% of typical year to date	% of typical full year	Records Began
North Egmont at Visitors Centre	20	858.5	128.7	3190.5	106.5	46.6	1996
Dawson Falls	23	1087.0	156.2	3559.0	123.3	55.9	1999
Kapoaiaia at Kahui Hut	25	690.5	128.9	2478.5	106.2	47.4	2006
Mangorei Upper at Forest Hill	19	367.5	116.2	1497.0	93.5	41.3	2018
Waiwhakaiho at Hillsborough	14	179.5	106.1	637.5	73.9	35.4	2013
Brooklands Zoo at New Plymouth	14	182.2	115.6	565.6	73.1	35.7	2012
Motunui M39 at Weston W3	16	196.8	116.9	616.6	82.1	39.2	1999
Waiwhakaiho at Egmont Village	14	275.5	119.6	1001.5	93.3	41.8	1996
Manganui at Everett Park	13	291.0	154.3	866.0	93.2	41.5	1996
Inglewood at Oxidation Ponds	13	266.5	118.5	913.5	87.1	39.0	2000
Stony at Mangatete Bridge	17	209.5	113.2	810.5	87.7	40.8	2004
Kapoaiaia at Lighthouse	12	140.6	107.5	554.6	87.0	41.4	1999
Taungatara at Eltham Rd	15	178.5	125.4	627.5	88.4	40.1	2005
Kaupokonui at Glenn Rd	15	158.5	138.5	462.5	86.0	39.9	1998
Patea at Stratford	14	293.5	155.3	997.0	110.9	50.5	1999
Mangaehu at Bridge	15	166.0	109.3	630.0	85.9	39.8	1999
Kotare at OSullivans	14	236.0	126.4	728.0	78.3	33.9	1998
Uruti at Kaka Rd	14	220.5	115.3	827.0	86.4	37.5	1996
Pohokura Saddle	13	262.0	147.1	843.0	97.6	42.4	1996
Omaru at Charlies	16	208.5	105.9	682.0	81.8	37.4	2006
Omahine at Moana Trig	17	148.5	92.2	613.5	78.9	36.6	2007

	June			Year to Date			
Rain gauge	# days with rain	Total rain (mm)	% of typical month	Total to date (mm)	% of typical year to date	% of typical full year	Records Began
Waitotara at Rimunui Station	11	98.5	75.2	382.5	62.3	28.0	1996
Waitotara at Ngutuwera	13	133.5	112.9	445.5	76.9	34.9	1999
Tawhiti at Duffys	14	136.5	140.7	484.0	96.5	43.9	1996
Patea at Bore 3	15	128.8	124.4	422.8	78.2	36.1	2006
Waitotara at Hawken Rd	13	119.6	127.5	371.4	66.4	32.3	2016

Notes: Low and high values in tables refer to the upper and lower 5th percentiles of the historic record for each site (except for wind gust and soil moisture which are the upper and lower 1st percentiles). Percentile values give a better indication of the general upper and lower range of the historic data against which to compare the current month. Start year (records began) shows the length of data used to compute historic highs, lows, and "typical values". Sites with a longer data record will generally provide a more reliable comparison to values in the current year.

1.2 Long-term data patterns

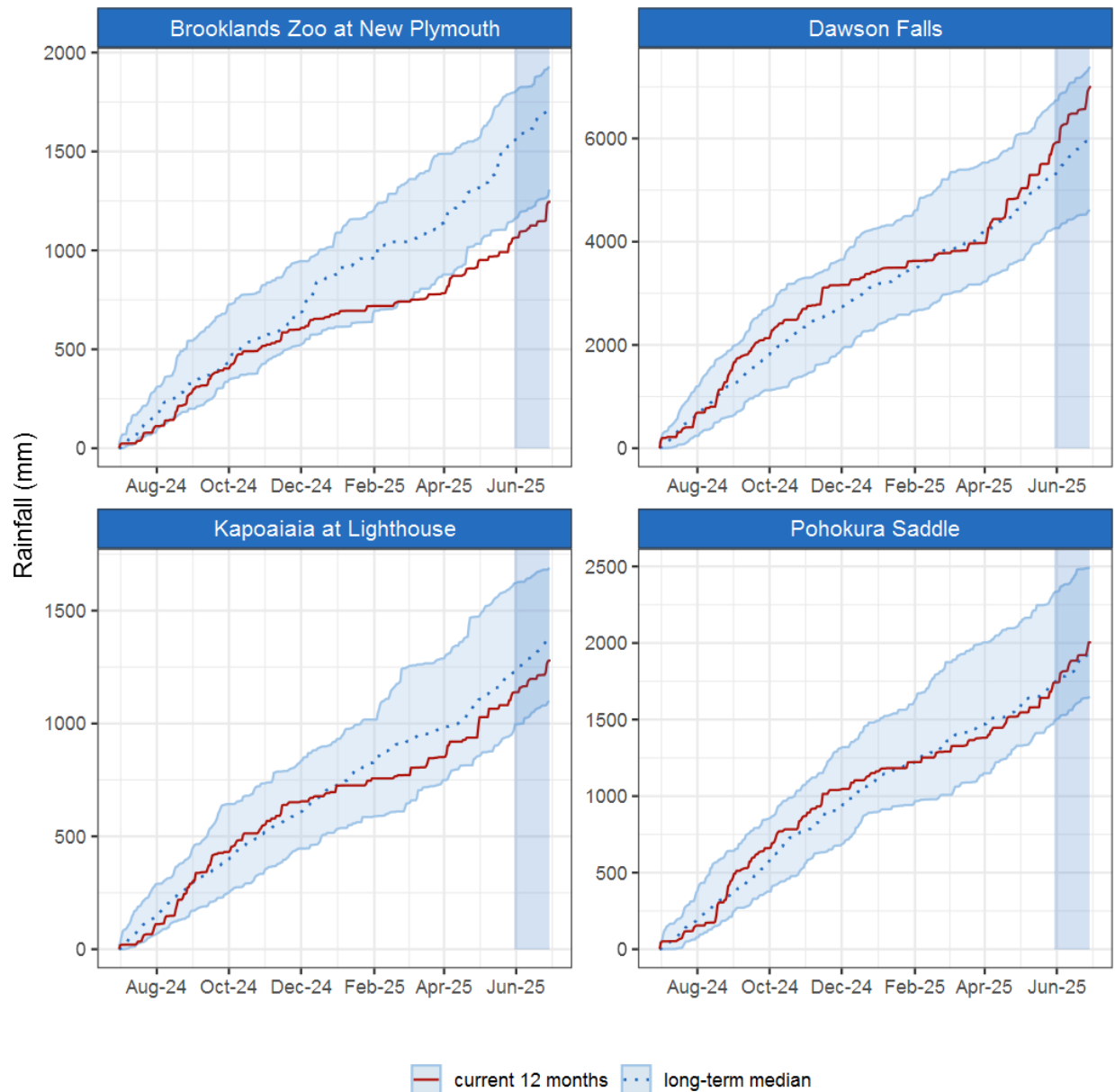


Figure 1.1: This year's and last year's data set in context of historic record at selected rain gauge sites in Taranaki.

1.3 Monthly Bar Charts

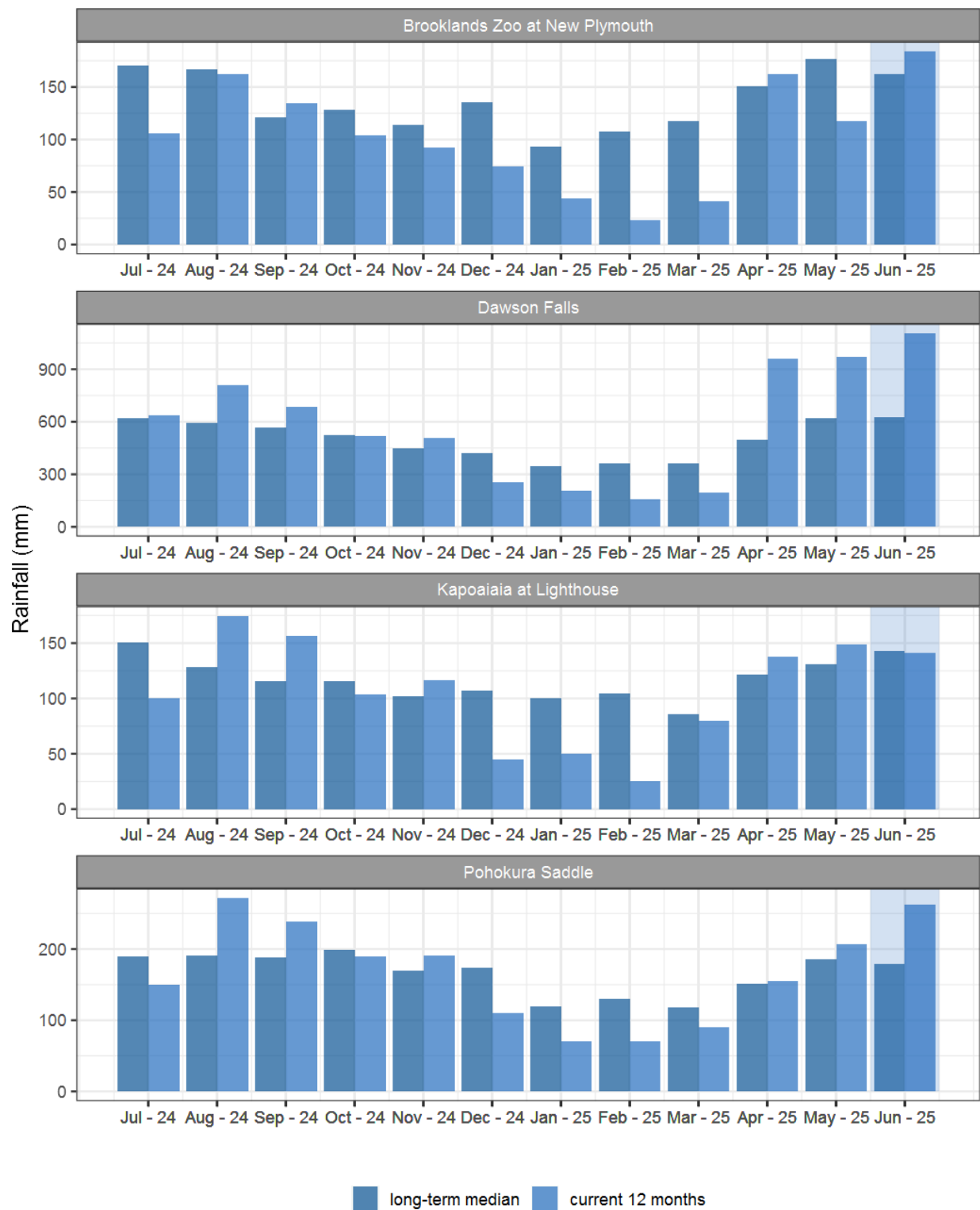


Figure 1.2: Monthly rainfall totals for this month and the mean of all previously recorded months.

2. River Flow

Map 2: June mean river flows (m3/sec), with difference as percentage of long-term mean.

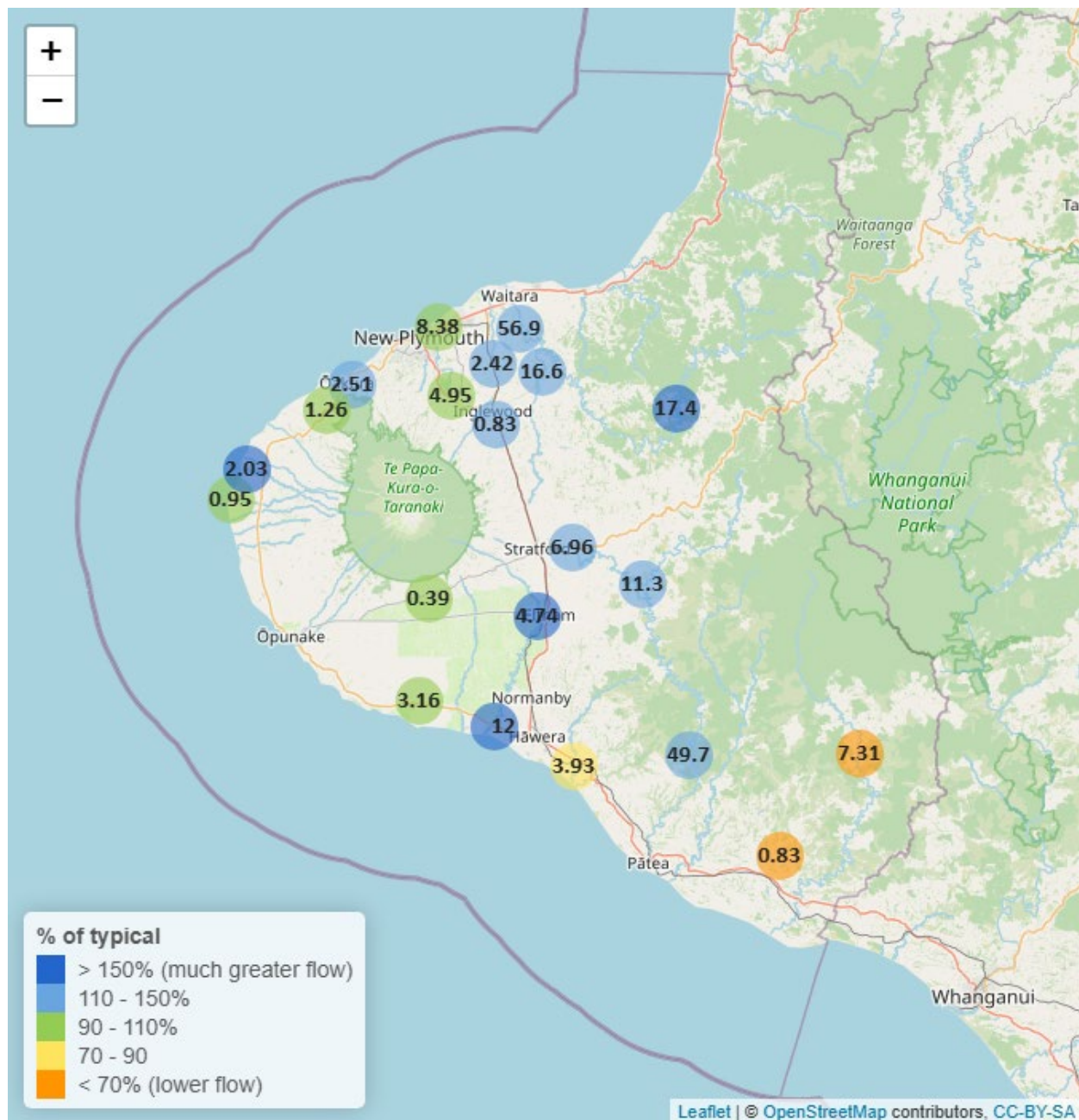


Table 2: Summary of high, low and mean flow for June and for June in all preceding years of record.

June 2025 - Recorded flows (m3/sec)								
	Highs		Lows		Mean			
River and Site	current month	historic	current month	historic	current month	historic	June maximum	Data years
Kapoaiaia at Lighthouse	4.21	3.70	0.63	0.48	0.95	0.96	13.77	38
Kaupokonui at Glenn Rd	25.92	10.89	1.47	1.28	3.16	2.88	57.21	47
Mangaehu at Bridge	67.49	51.12	5.85	4.18	11.30	9.14	103.26	47
Manganui at Everett Park	118.93	72.93	9.22	6.09	16.60	12.83	364.41	33
Mangawheroiti Above Intake W.W	3.14	1.23	0.22	0.21	0.39	0.38	8.68	12
Moumahaki at Johnston Rd	5.72	6.81	0.59	0.61	0.83	1.36	16.62	7
Ngatoro at SH3	7.44	4.60	0.57	0.41	0.83	0.74	34.89	35
Oakura at Victoria Rd	18.89	11.61	1.43	0.90	2.51	2.13	60.81	6
Patea at McColls Bridge	114.32	89.00	10.71	3.77	49.70	37.58	171.85	37
Patea at Skinner Rd	32.07	17.83	3.46	1.91	6.96	4.70	117.25	47
Tangahoe below Railway Bridge	28.94	15.37	2.39	1.80	3.93	4.86	80.95	7
Timaru at Tataraimaka	13.08	5.40	0.69	0.55	1.26	1.23	67.59	12
Waingongoro at Eltham Rd	20.30	10.26	2.28	1.04	4.74	2.75	49.81	50
Waingongoro at SH45	45.36	22.73	6.74	2.94	12.00	7.68	76.97	44
Waiongana at SH3a	12.61	9.82	1.43	0.89	2.42	2.19	56.35	45
Waitara at Bertrand Rd	346.18	240.60	31.03	16.39	56.90	43.70	501.92	45
Waitara at Purangi Bridge	126.83	109.02	6.77	2.74	17.40	11.00	187.24	25
Waitotara at Rimunui Station	58.30	63.47	5.07	4.85	7.31	11.48	123.72	20
Waiwhakaiho at Egmont Village	33.96	26.96	3.23	2.55	4.95	4.88	152.72	45
Waiwhakaiho at Vickers Rd	58.64	42.97	2.83	2.46	8.38	8.61	259.82	5
Warea at Coast	7.19	3.87	1.28	0.62	2.03	1.17	16.23	8

2.2 Long-term data patterns

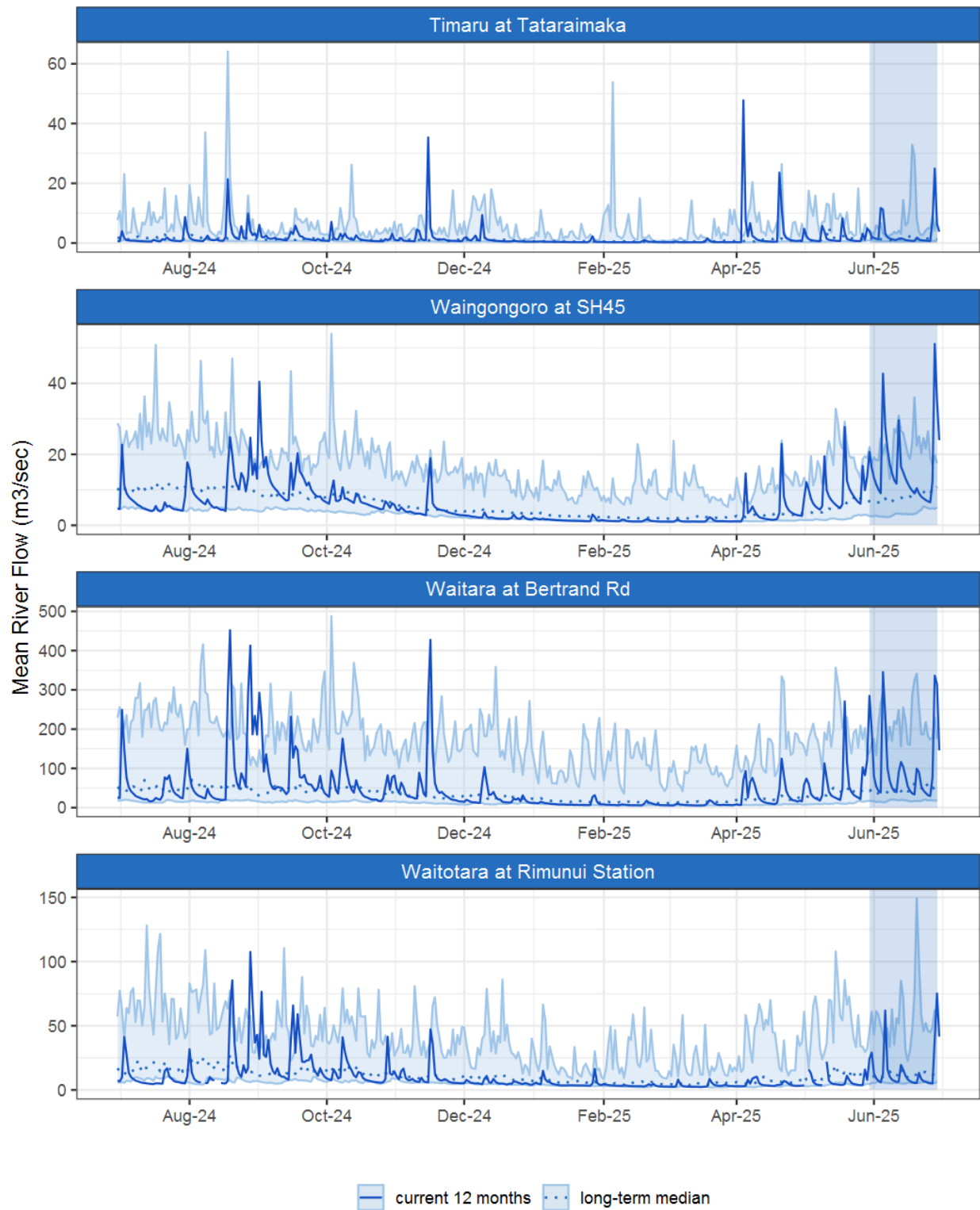


Figure 2.1: Running average river flows for selected sites, set in context of the historic record.

2.3 Monthly Bar Charts

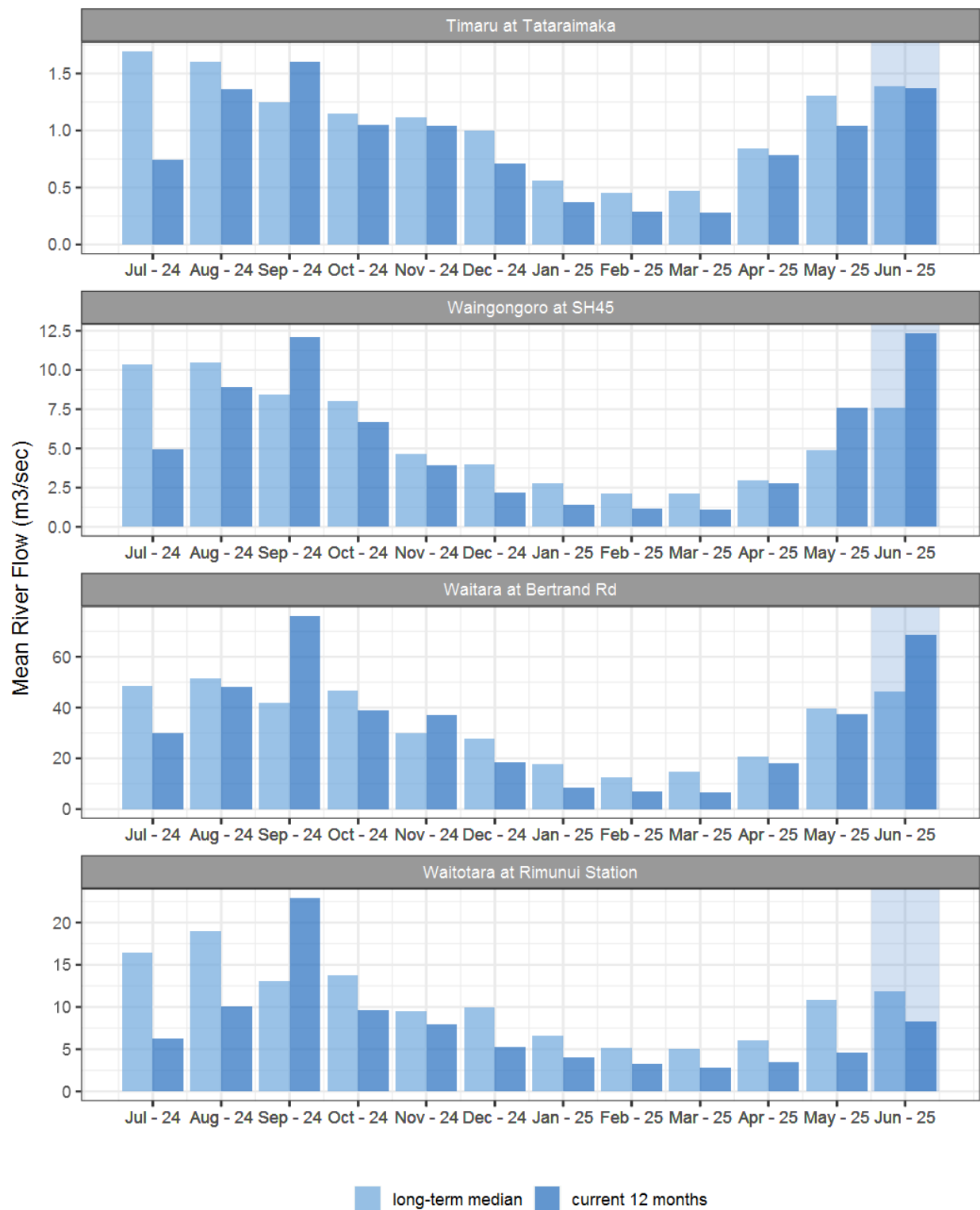


Figure 2.2: Monthly mean river flow for this month and the mean of all previously recorded months.

3. River Temperature

Map 3: June mean water temperature with difference to long-term mean (°C).

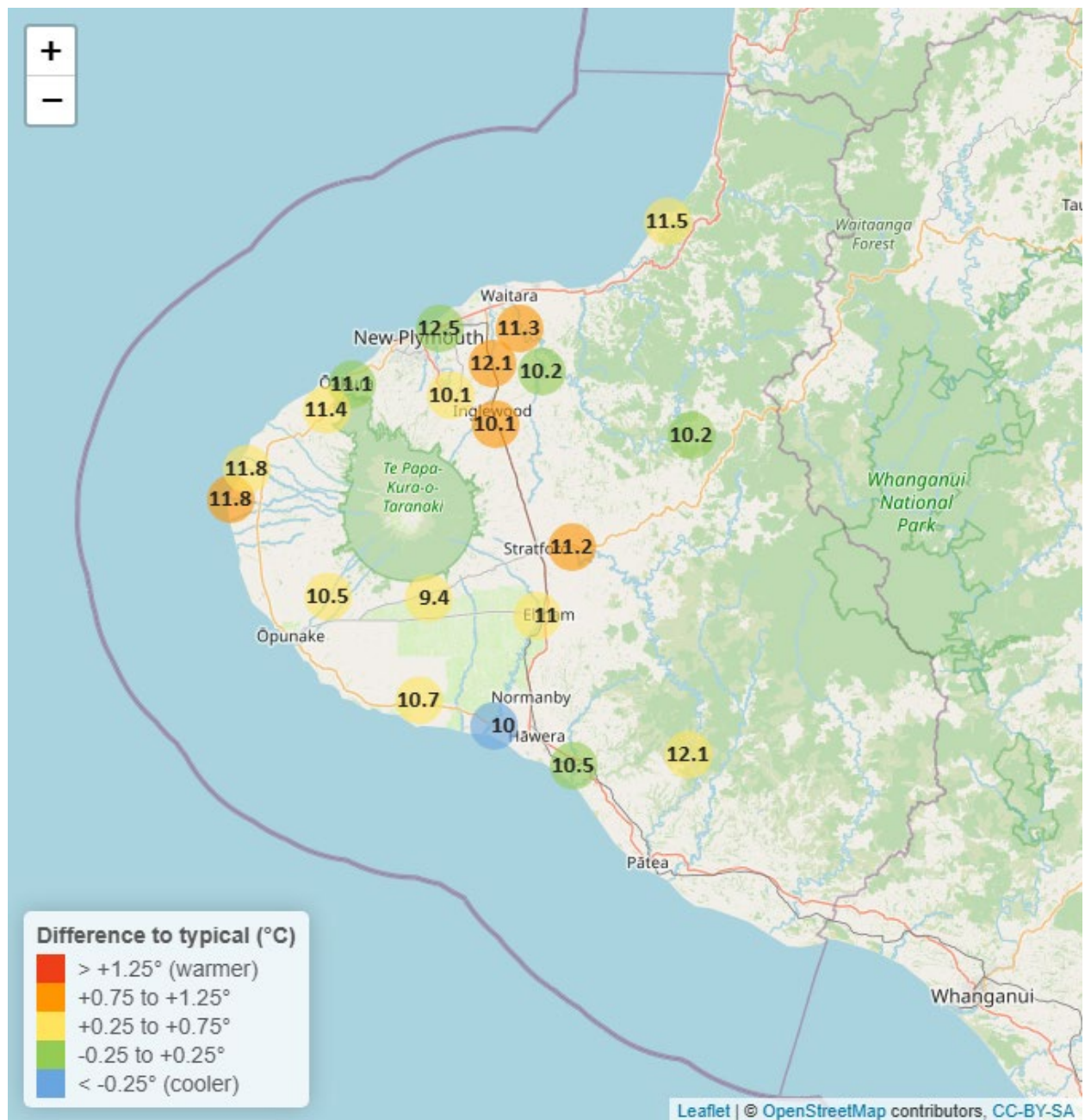


Table 3: Summary of high, low and mean river temperature for June and for June in all preceding years of record.

June 2025 - River Temperature (°C)								
	Highs		Lows		Mean			
River and Site	current month	historic	current month	historic	current month	historic	June maximum	Data years
Kapoaiaia at Lighthouse	13.85	13.46	9.10	7.60	11.80	10.98	14.50	26
Kaupokonui at Glenn Rd	12.39	12.40	8.37	7.30	10.69	10.12	13.20	31
Manganui at Everett Park	11.90	12.43	8.47	7.52	10.23	10.25	12.76	16
Mangaone 3 at Stub Rd	14.24	14.43	10.68	10.99	12.51	12.67	15.00	5
Mangawheroiti Above Intake W.W	10.81	10.43	7.69	7.05	9.44	8.83	11.77	12
Matau at Woolshed	12.10	12.23	8.11	7.28	10.15	10.11	13.02	7
Ngatoro at SH3	11.77	11.50	8.06	6.87	10.13	9.35	12.62	23
Oakura at Victoria Rd	12.58	12.66	8.98	8.74	11.06	11.00	13.44	6
Patea at McColls Bridge	13.59	12.86	11.44	10.60	12.13	11.70	13.76	11
Patea at Skinner Rd	12.66	12.18	9.58	7.60	11.22	10.24	13.76	21
Tangahoe below Railway Bridge	12.63	12.41	7.59	7.69	10.49	10.40	13.83	7
Timaru at Tataraimaka	12.98	12.70	9.27	8.49	11.41	10.98	13.77	10
Waiaua 2 at Barraclough Opua	12.54	12.12	7.93	7.29	10.50	9.89	13.97	6
Waikaramarama at Bridge	13.34	13.11	9.37	8.99	11.54	11.24	14.25	7
Waingongoro at Eltham Rd	12.06	11.90	9.27	7.90	10.97	10.41	12.72	21
Waingongoro at SH45	13.15	12.48	0.00	7.84	10.04	10.59	13.67	20
Waiongana at SH3a	13.89	12.88	10.10	8.68	12.05	10.96	14.58	14
Waitara at Bertrand Rd	12.79	12.49	9.33	7.75	11.29	10.24	13.27	35
Waiwhakaiho at Egmont Village	11.60	11.65	8.24	6.66	10.13	9.42	12.84	33
Warea at Coast	13.73	13.44	9.28	8.84	11.79	11.35	14.15	6

3.2 Long-term data patterns

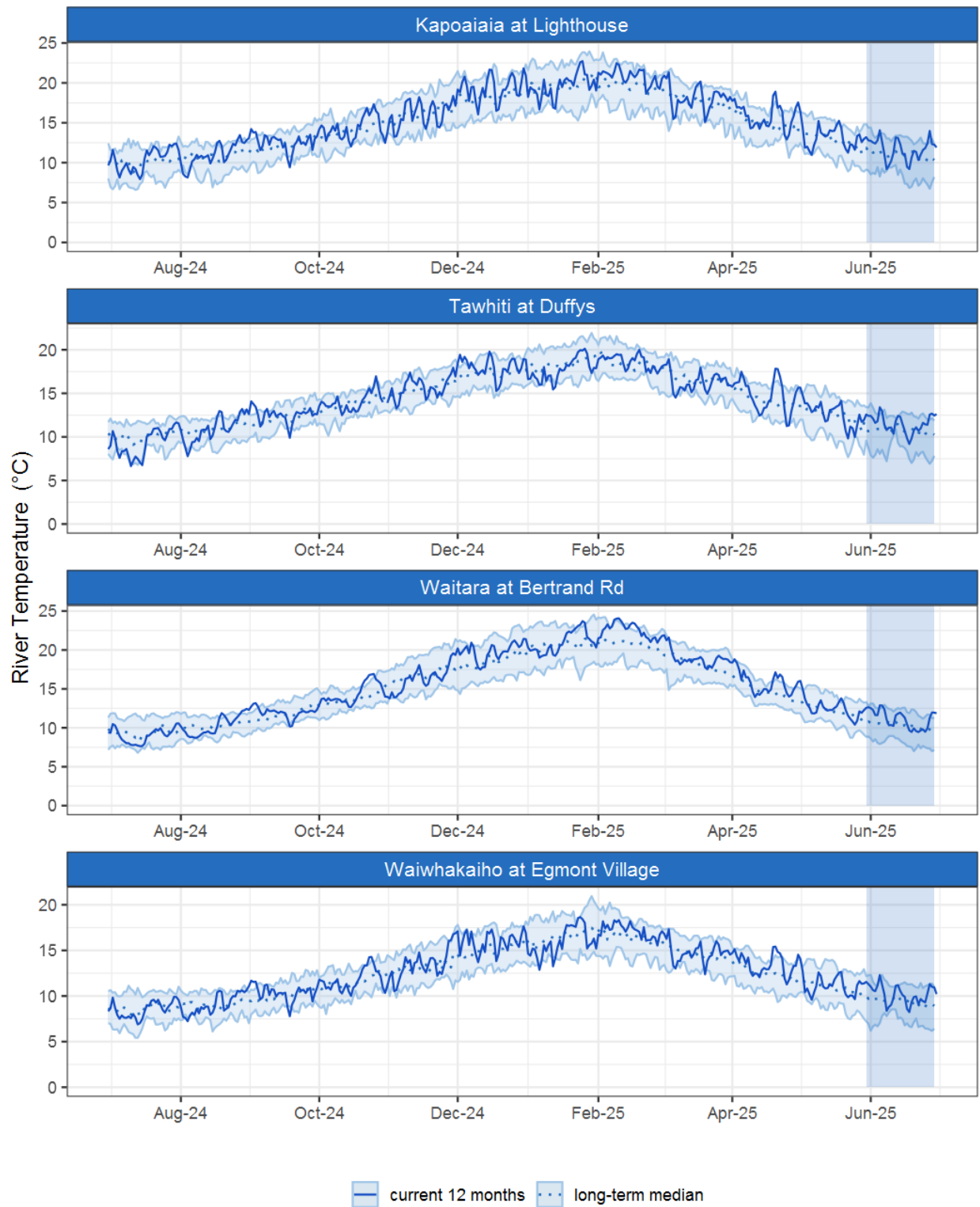


Figure 3.1: Running average river temperature for selected sites, set in context of the historic record.

3.3 Monthly Bar Charts

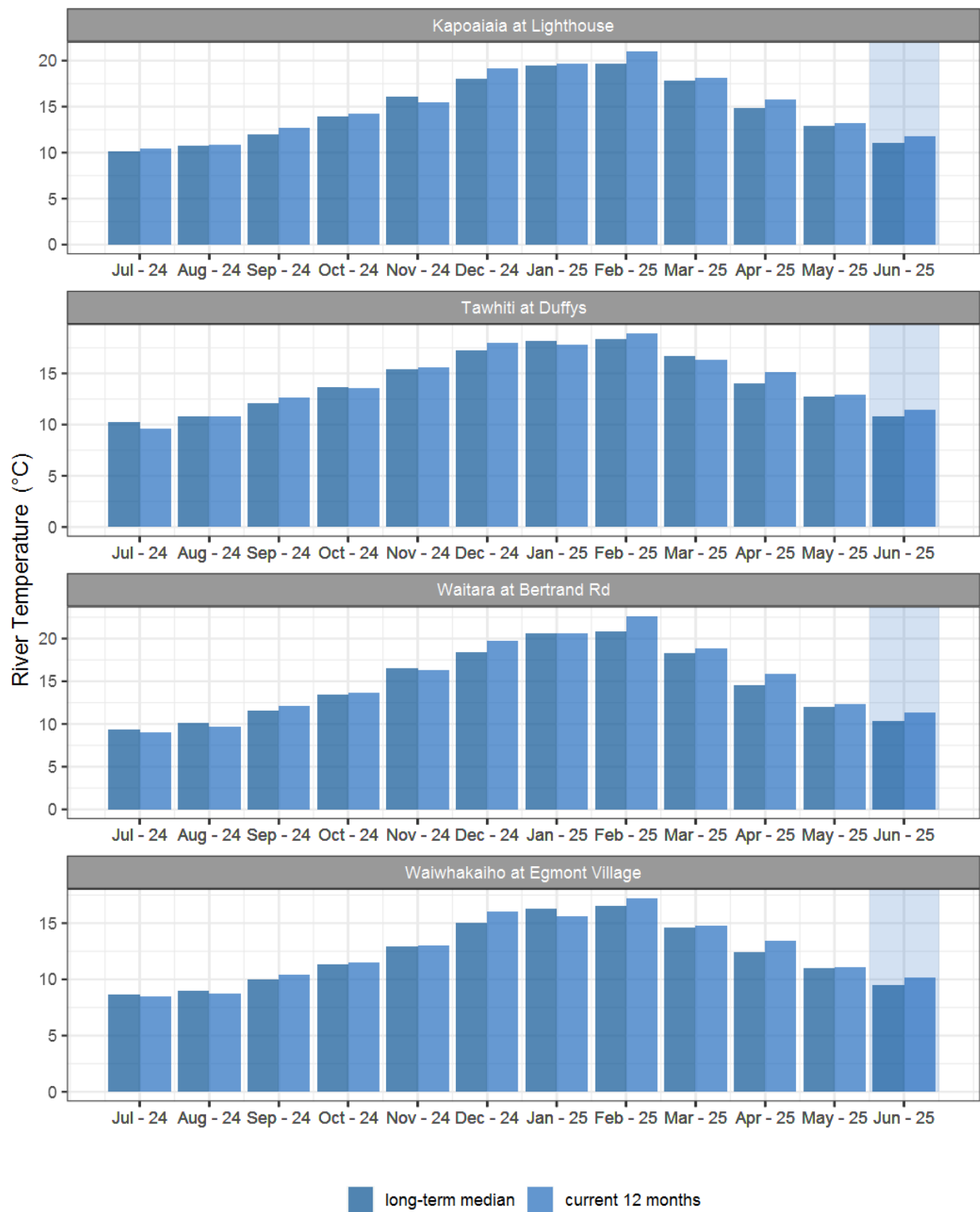


Figure 3.2: Monthly mean river temperature for this month and the mean of all previously recorded months.

4. Air Temperature

Map 4: June mean air temperature with difference to long-term mean (°C).

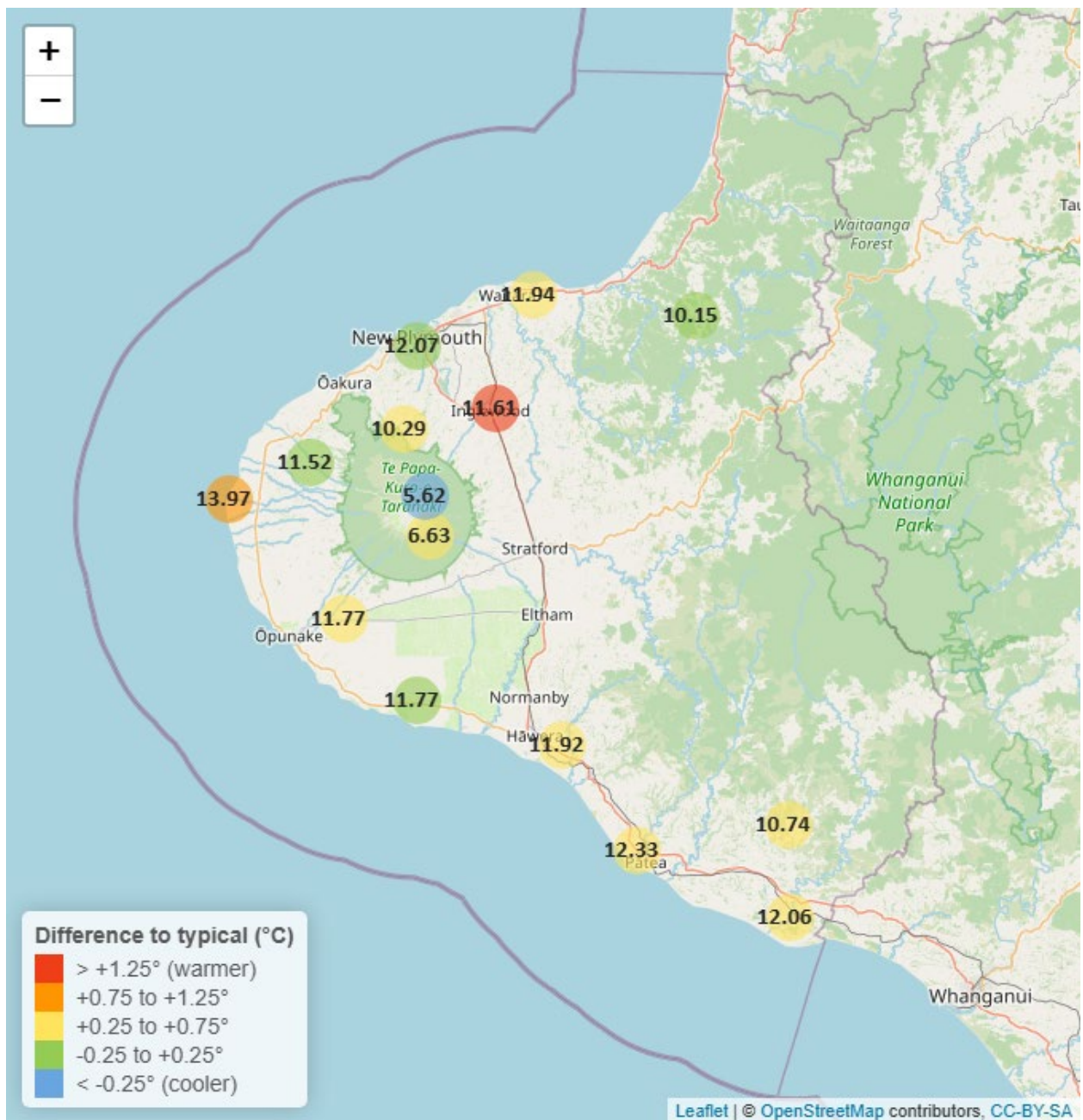


Table 4: Summary of high, low and mean air temperature for June and for June in all preceding years of record.

June 2025 - Air Temperature (°C)								
	Highs		Lows		Mean			
Site	current month	historic	current month	historic	current month	historic	June maximum	Data years
Brooklands Zoo at New Plymouth	16.60	16.22	7.62	5.87	12.07	11.88	18.37	13
Dawson Falls	10.67	10.33	2.14	1.65	6.63	6.35	13.22	10
Inglewood at Oxidation Ponds	16.04	14.66	5.93	3.22	11.61	10.18	17.80	13
Kapoaiaia at Lighthouse	16.42	15.91	7.78	6.91	13.97	13.10	17.77	13
Kaupokonui at Glenn Rd	15.74	15.85	4.72	4.74	11.77	11.88	18.37	10
Mangorei Upper at Forest Hill	13.47	13.37	6.07	4.90	10.29	9.93	15.63	8
Motunui M39 at Weston W3	16.17	15.48	5.71	5.36	11.94	11.55	17.37	8
North Egmont at Visitors Centre	9.37	10.06	1.50	1.61	5.62	6.19	11.77	10
Patea at Bore 3	16.23	15.67	5.51	5.38	12.33	11.87	18.40	12
Stony at Mangatete Bridge	14.94	15.30	6.75	6.18	11.52	11.66	16.47	9
Taungatara at Eltham Rd	16.00	15.05	5.94	5.01	11.77	11.24	17.62	10
Tawhiti at Duffys	15.93	15.67	0.56	1.24	11.92	11.37	17.94	12
Uruti at Kaka Rd	14.33	13.92	5.43	4.71	10.15	10.15	16.33	7
Waitotara at Hawken Rd	16.57	15.78	4.38	4.71	12.06	11.68	18.93	9
Weraweraonga at Mangawhio Rd	16.48	15.64	2.92	2.36	10.74	10.18	19.41	8

4.2 Long-term data patterns

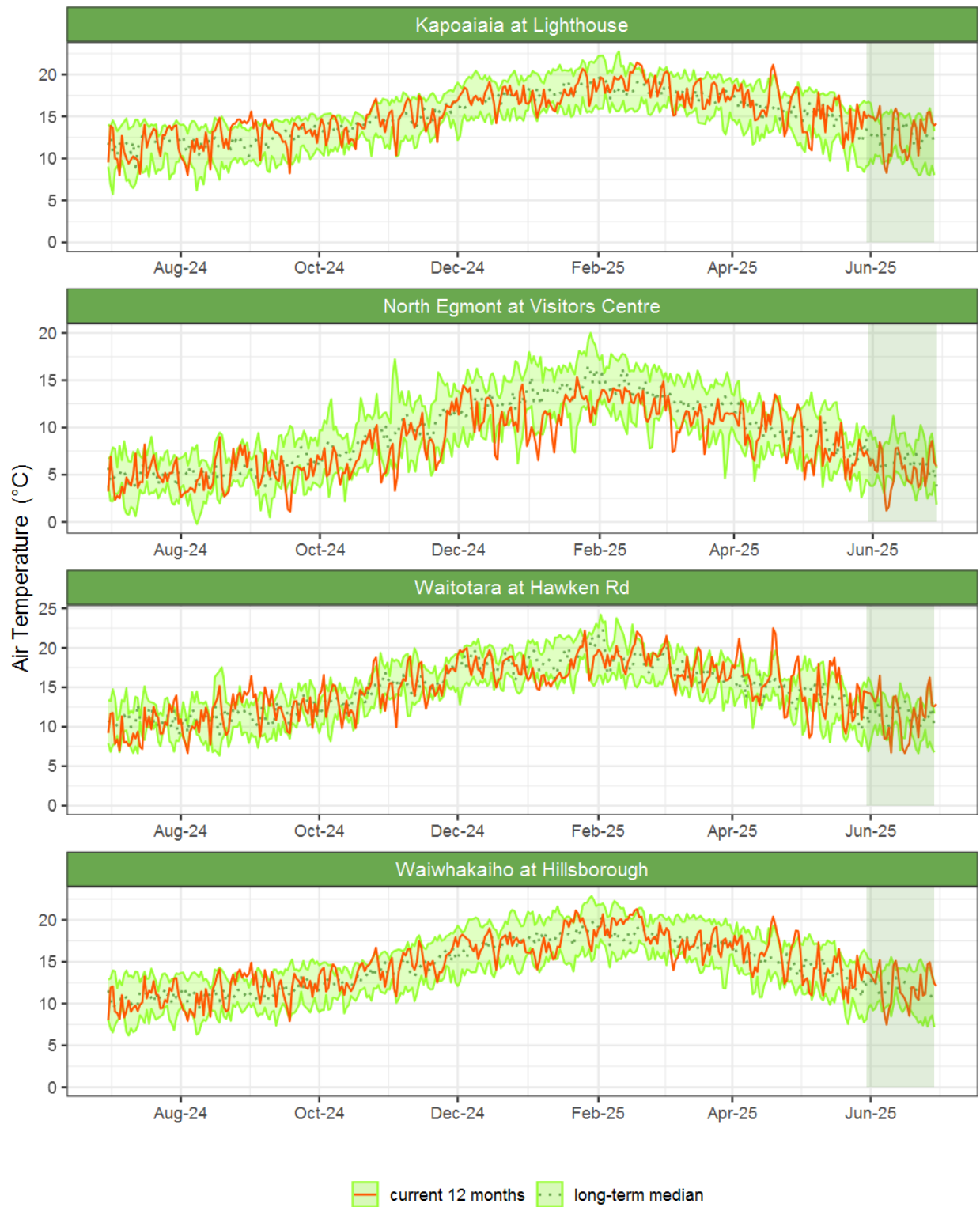


Figure 4.1: Running average air temperature for selected sites, set in context of the historic record.

4.3 Monthly Bar Charts

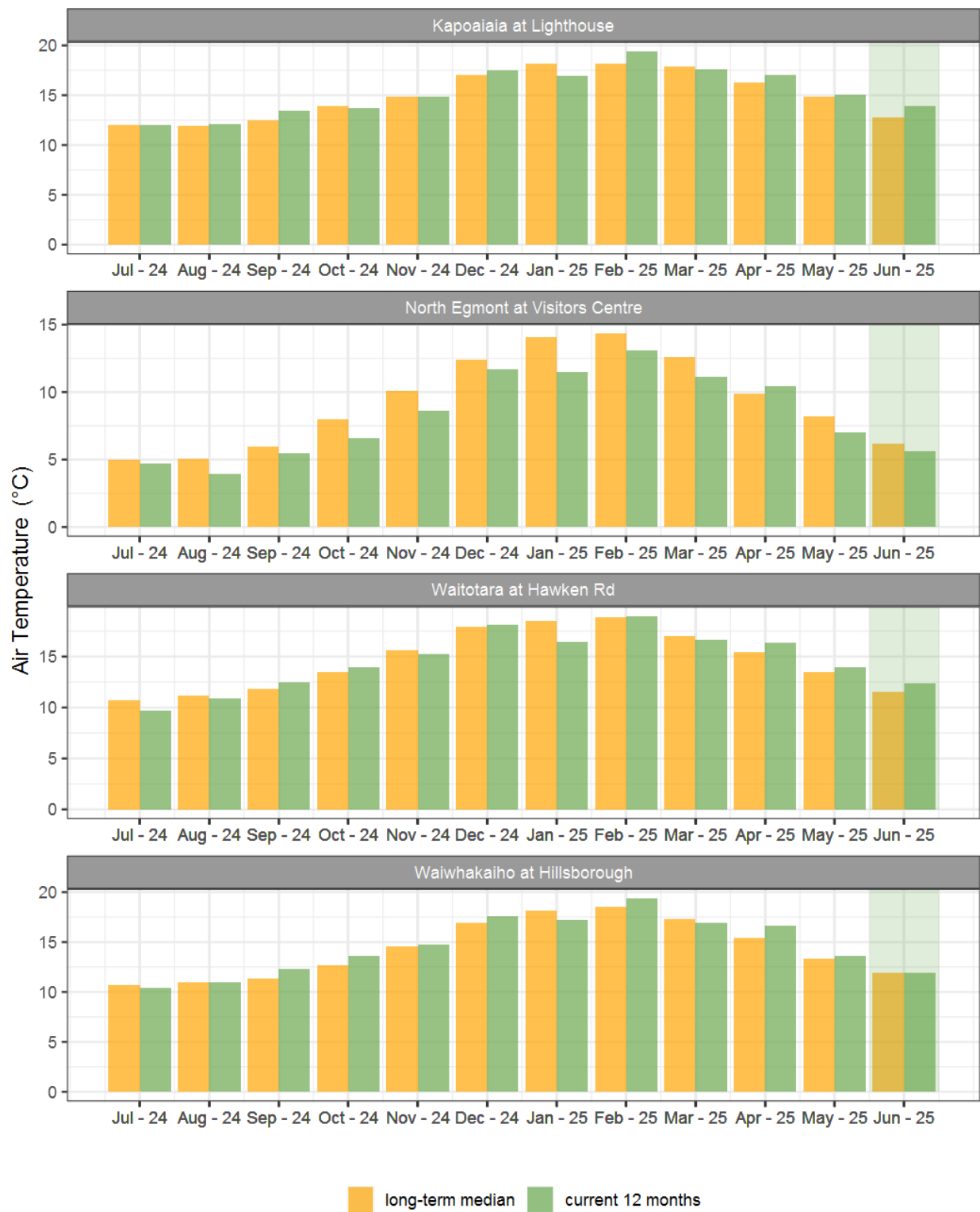


Figure 4.2: Monthly mean air temperature for June and the mean of all previously recorded months.

5. Soil Moisture

Map 5: June mean soil moisture content (%).

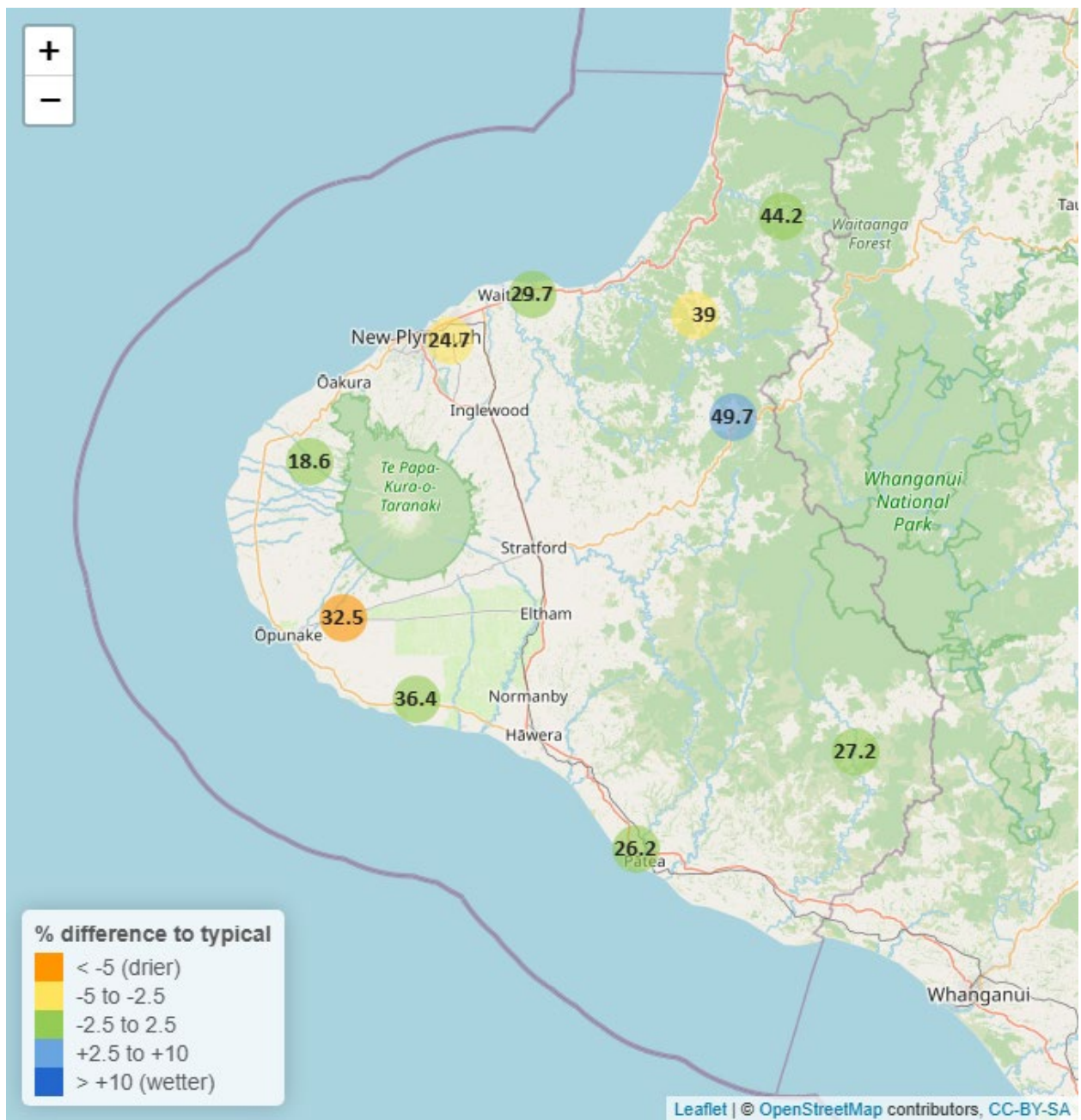


Table 5: Summary of high, low and mean soil moisture for June and for June in all preceding years of record.

June 2025 - Soil Moisture (%)								
	Highs		Lows		Mean			
Site	current month	historic	current month	historic	current month	historic	June maximum	Data years
Kaupokonui at Glenn Rd	39.35	43.64	32.52	31.09	36.42	35.04	41.07	14
Kotare at OSullivans	50.07	49.08	42.35	36.36	44.16	41.95	56.54	13
Motunui M39 at Weston W3	32.08	32.08	29.03	27.33	29.69	30.28	33.61	12
Patea at Bore 3	27.71	33.46	25.53	25.56	26.19	28.69	30.58	9
Pohokura Saddle	54.10	52.14	47.20	39.54	49.67	45.14	55.92	11
Stony at Mangatete Bridge	21.92	24.66	17.36	12.88	18.56	19.42	25.51	9
Taungatara at Eltham Rd	37.01	43.82	31.05	28.13	32.51	38.56	41.46	12
Uruti at Kaka Rd	41.99	45.84	38.10	39.03	38.98	41.62	44.36	14
Waitotara at Rimunui Station	29.49	31.60	26.36	26.16	27.22	28.64	31.41	8
Waiwhakaiho at Hillsborough	27.31	33.24	23.87	25.24	24.71	29.21	30.65	13

5.2 Long-term data patterns

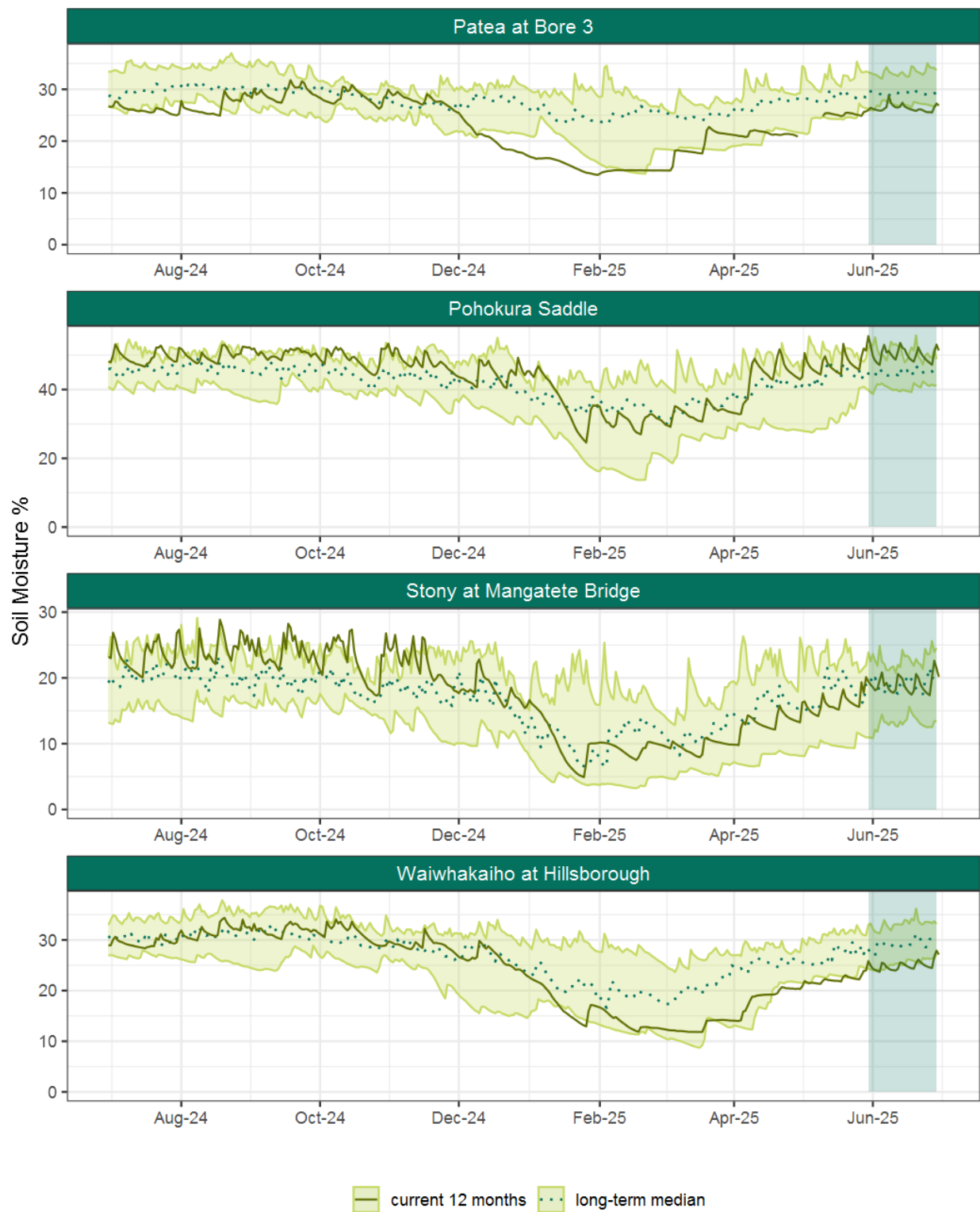


Figure 5.1: Running average soil moisture for selected sites, set in context of the historic record.

5.3 Monthly Bar Charts

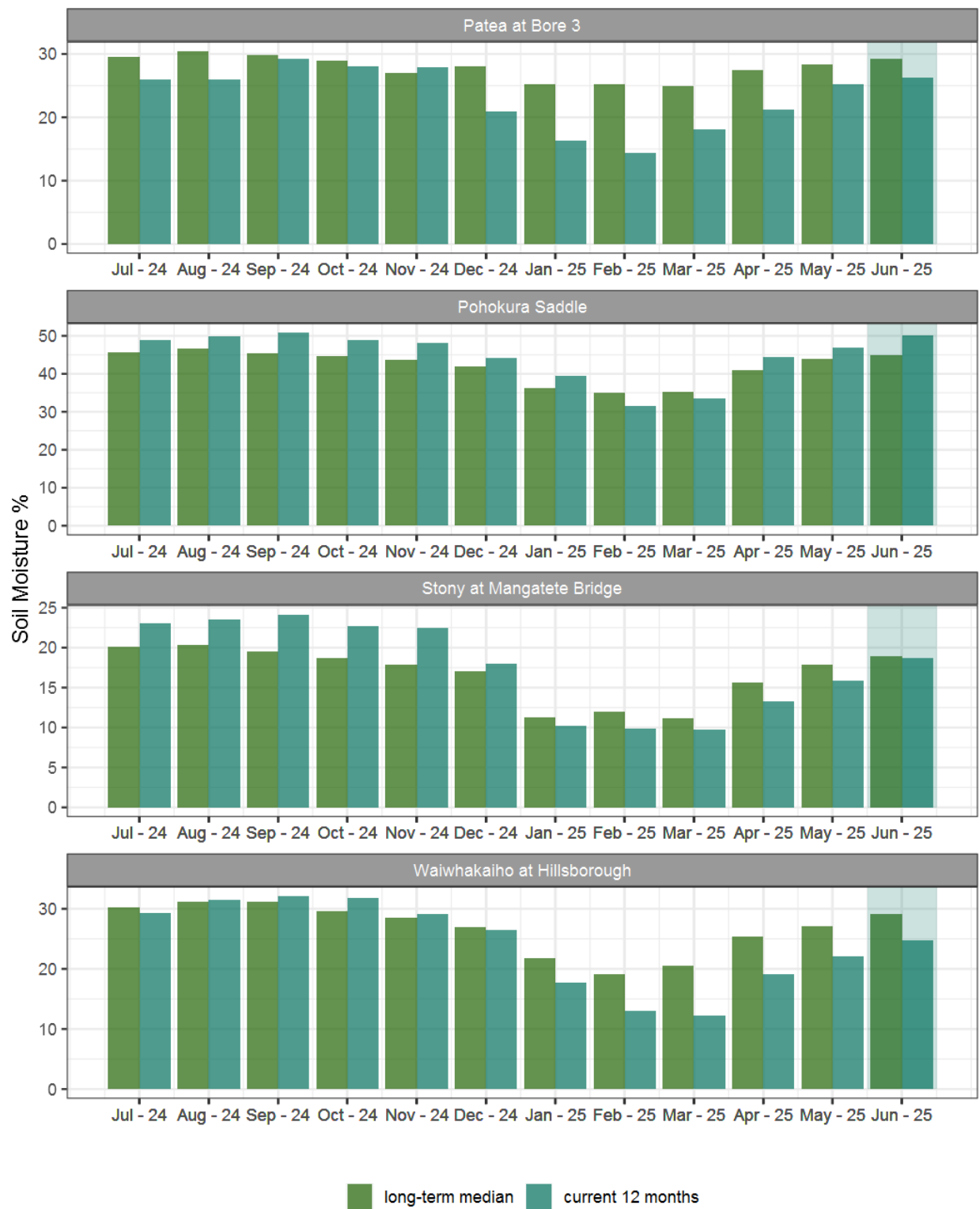


Figure 5.2: Monthly mean soil moisture for this month and the mean of all previously recorded months.

6. Soil Temperature

Map 6: June mean soil temperatures with difference to long-term mean (°C).

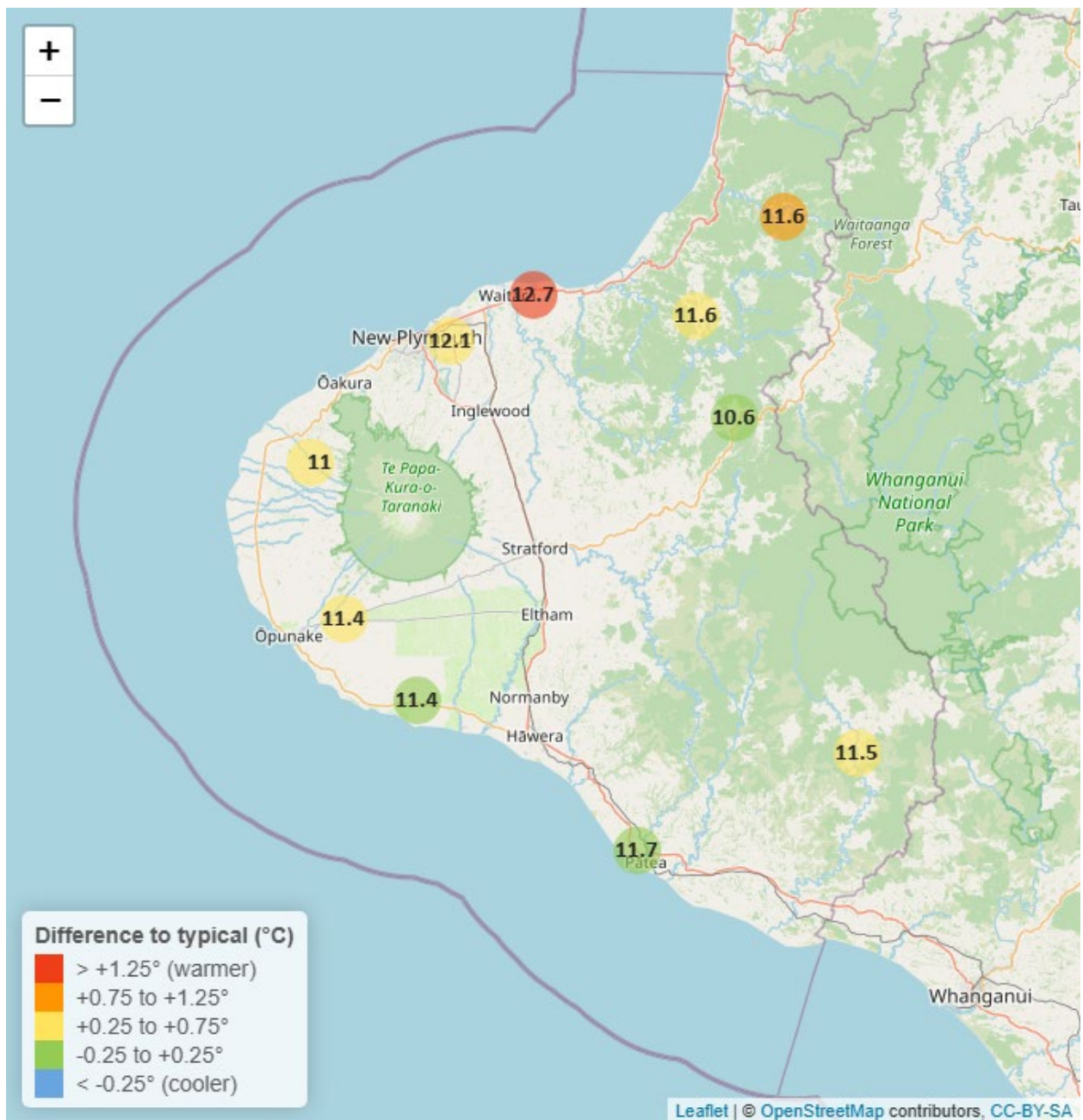


Table 6: Summary of high, low and mean soil temperature for June and for June in all preceding years of record.

June 2025 - Soil Temperatures (°C)								
	Highs		Lows		Mean			
Site	current month	historic	current month	historic	current month	historic	June maximum	Data years
Kaupokonui at Glenn Rd	13.30	13.10	9.60	9.50	11.4	11.40	13.80	14
Kotare at OSullivans	13.03	12.54	10.19	7.42	11.6	10.50	13.41	13
Motunui M39 at Weston W3	14.17	13.52	11.26	8.80	12.7	11.43	14.69	12
Patea at Bore 3	13.42	13.19	10.19	9.32	11.7	11.51	14.03	9
Pohokura Saddle	12.27	12.15	8.90	8.40	10.6	10.54	12.97	11
Stony at Mangatete Bridge	12.86	12.80	8.64	8.30	11.0	10.69	13.80	8
Taungatara at Eltham Rd	13.12	12.96	9.47	9.14	11.4	11.10	14.10	12
Uruti at Kaka Rd	12.82	12.67	10.33	8.50	11.6	11.14	13.13	14
Waitotara at Rimunui Station	13.57	13.00	9.21	8.47	11.5	11.00	14.41	8
Waiwhakaiho at Hillsborough	13.55	13.40	10.63	9.71	12.1	11.75	14.13	13

6.2 Long-term data patterns

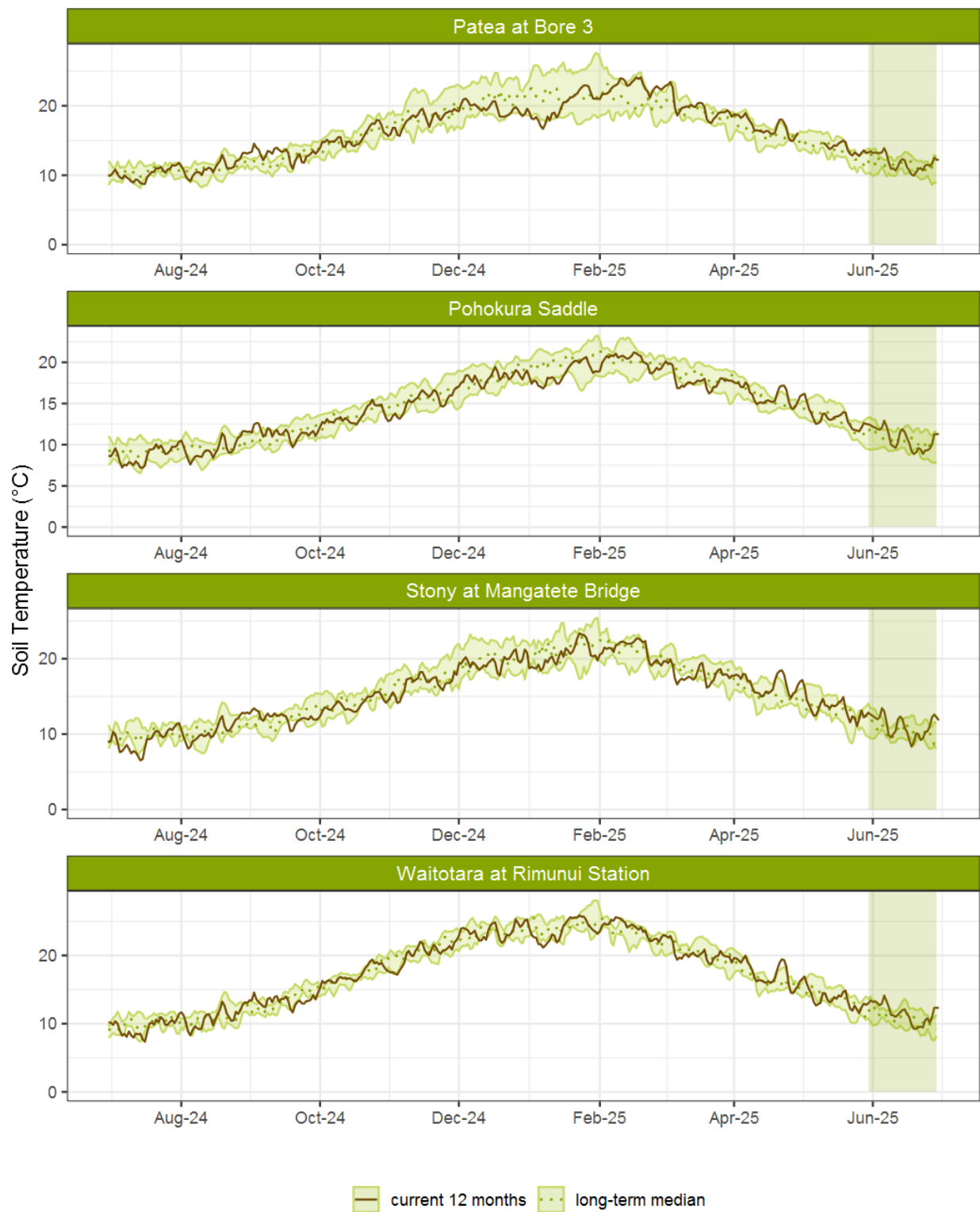


Figure 6.1: Running average soil temperature for selected sites, set in context of the historic record.

6.3 Monthly Bar Charts

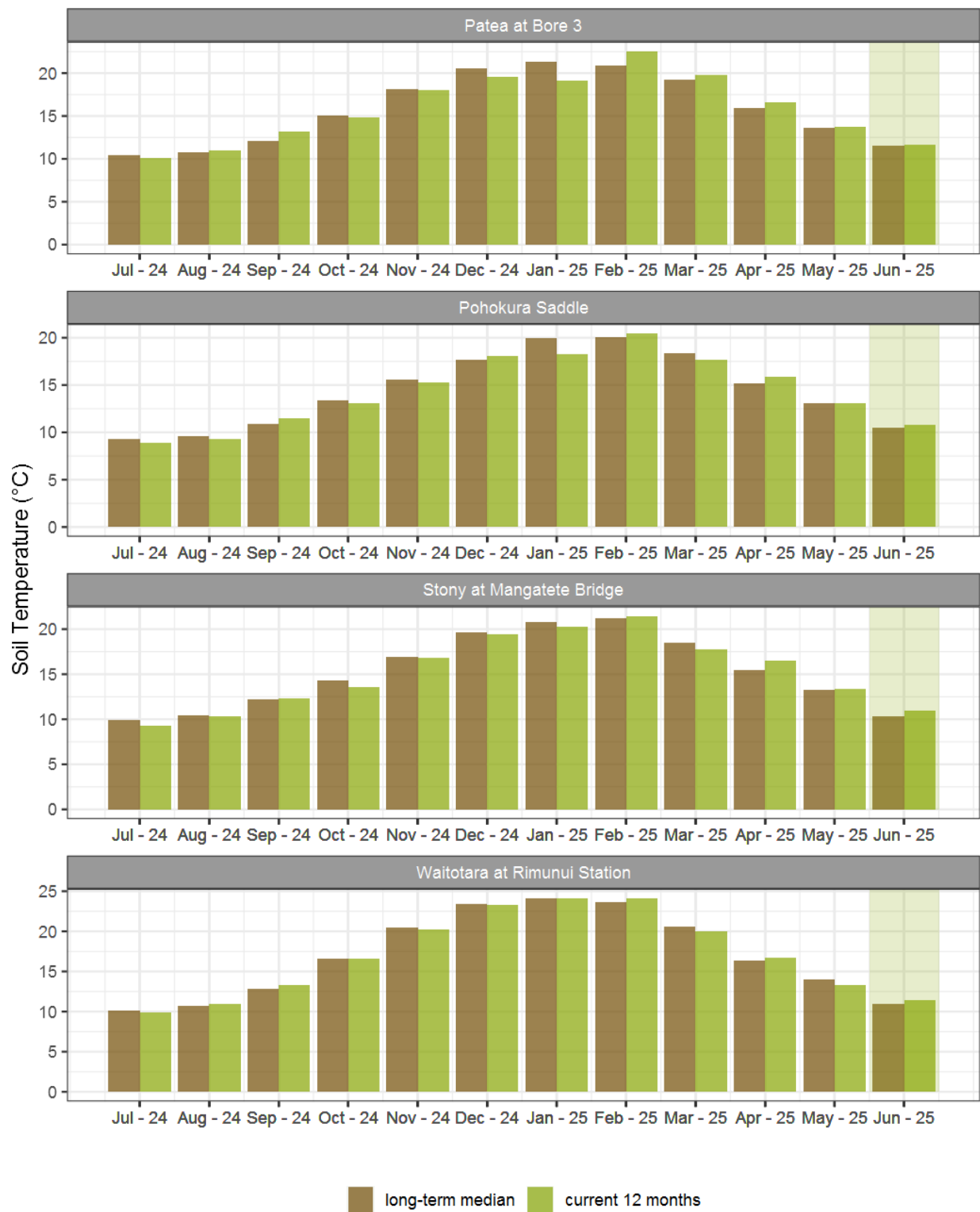


Figure 6.2: Monthly mean soil temperature for this month and the mean of all previously recorded months.

7. Wind Speed and Maximum Gusts

Map 7: June mean of wind speed with difference to long-term values (km/hr).

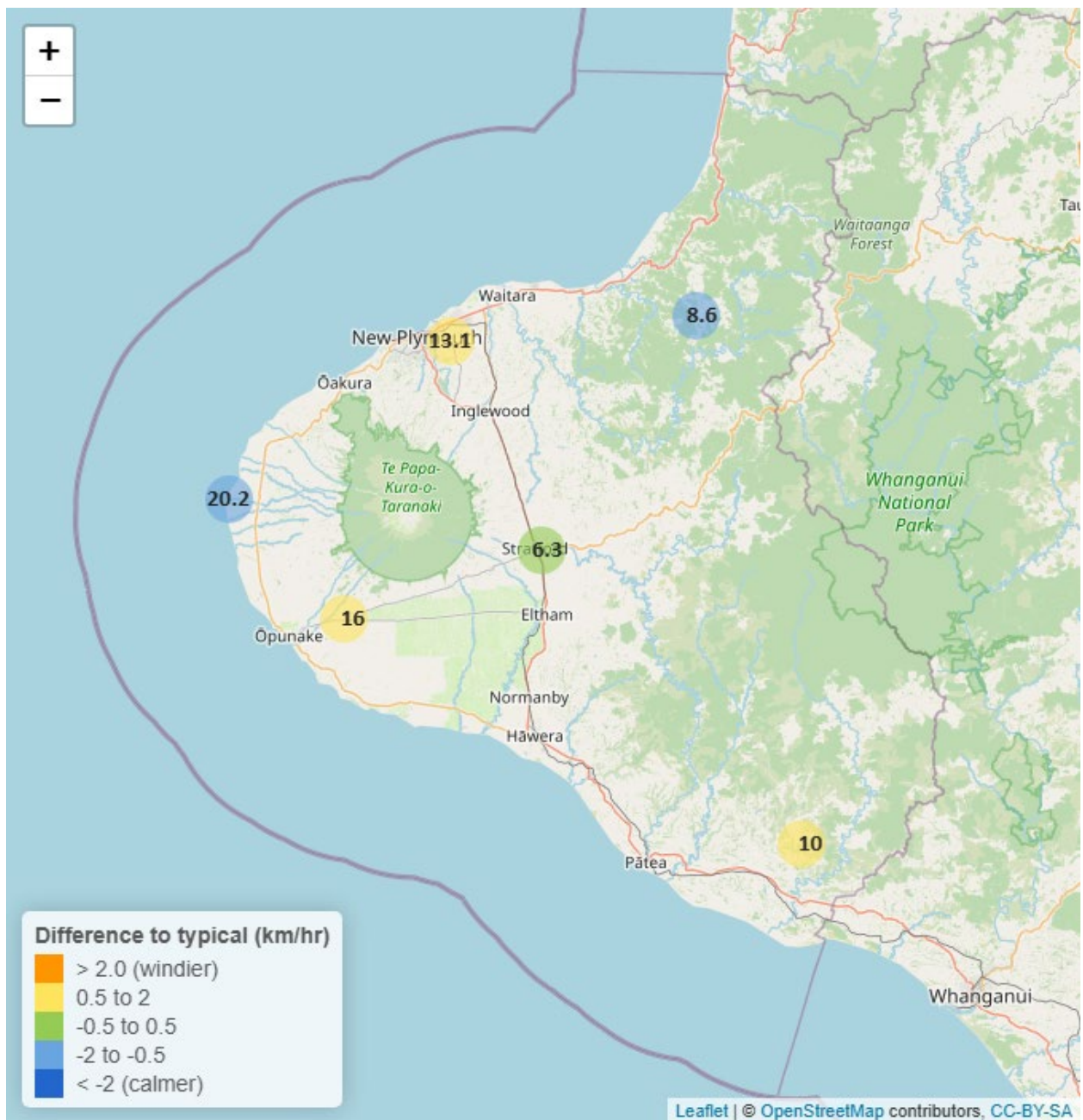


Table 7: Summary of high, low and mean wind speed for June and for June in all preceding years of record.

June 2025 - Wind Speed (average) - (km/hr)								
	Highs		Lows		Mean			
Site	current month	historic	current month	historic	current month	historic	June maximum	Data years
Kapoaiaia at Lighthouse	42.18	42.86	7.41	6.82	20.2	20.93	50.88	25
Patea at Stratford	20.20	17.56	2.35	2.39	6.3	6.05	31.94	19
Taungatara at Eltham Rd	35.32	31.15	6.31	6.25	16.0	14.55	51.31	9
Uruti at Kaka Rd	24.59	24.42	3.04	3.42	8.6	10.01	38.20	26
Waitotara at Ngutuvera	23.13	22.58	2.77	2.07	10.0	9.42	35.55	27
Waiwhakaiho at Hillsborough	24.84	29.78	4.59	4.15	13.1	12.19	40.80	8

Table 8: Summary of high, low and maximum wind gusts for June and for June in all preceding years of record.

June 2025 - Wind Gusts (Maximum) - (km/hr)								
	Highs		Lows		Mean			
Site	current month	historic	current month	historic	current month	historic	June maximum	Data years
Kapoaiaia at Lighthouse	66.60	83.90	23.76	19.60	43.9	50.00	73.08	25
Patea at Stratford	65.16	60.40	13.68	14.70	37.1	32.76	77.04	19
Taungatara at Eltham Rd	84.70	74.90	27.80	19.20	45.4	41.10	88.20	9
Uruti at Kaka Rd	95.04	72.72	22.32	17.90	37.4	38.16	102.96	25
Waitotara at Ngutuvera	92.88	70.20	20.16	16.20	46.4	39.30	97.56	27
Waiwhakaiho at Hillsborough	65.40	73.32	20.50	18.20	44.8	38.40	76.60	8

7.2 Long-term data patterns

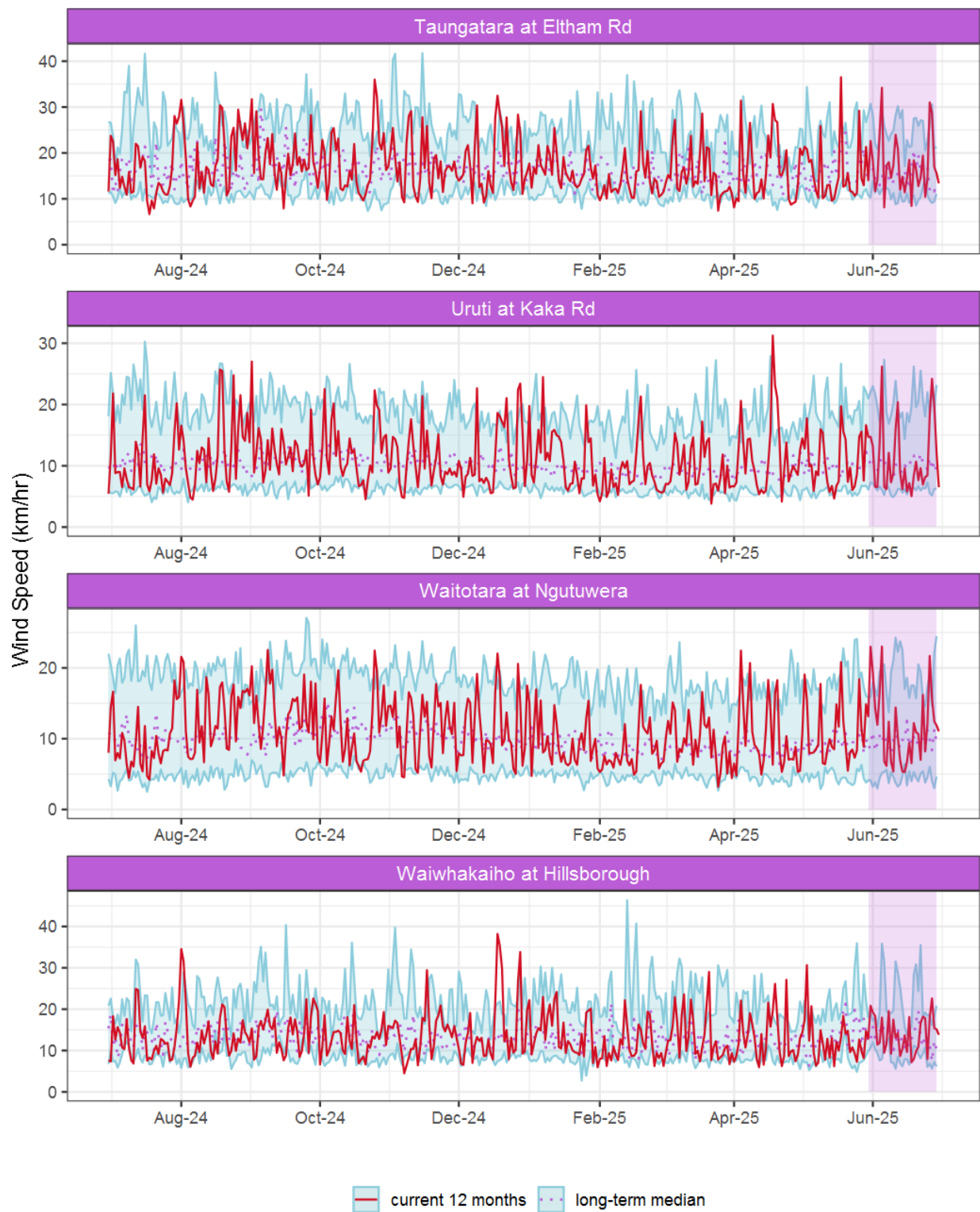


Figure 7.1: Running average wind speed (km/hr) for selected sites, set in context of the historic record.

7.3 Monthly Bar Charts

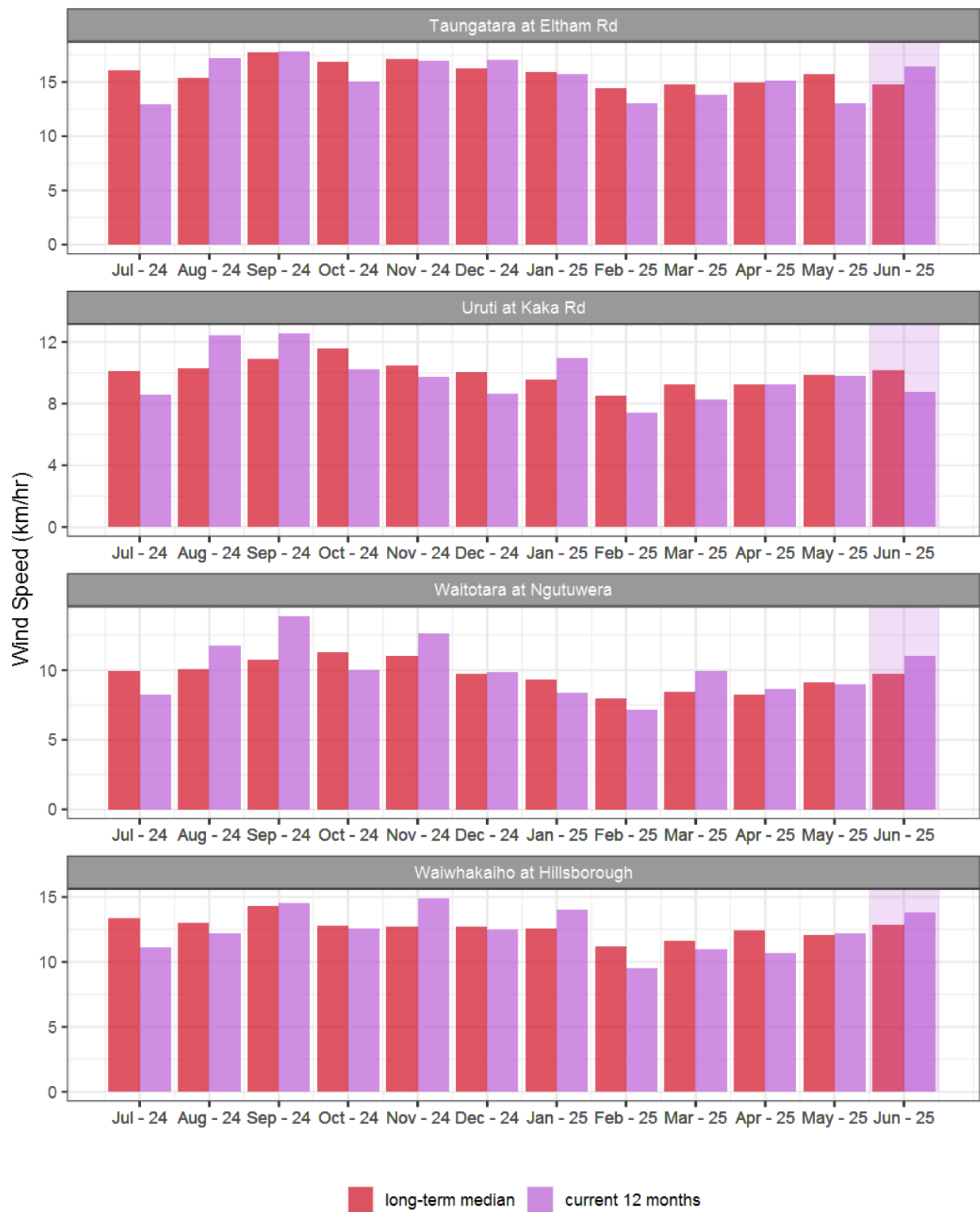


Figure 7.2: Monthly mean wind speed (km/hr) for selected sites, relative to the mean of all previously recorded months.

7.4 Wind roses for June 2025

Average windspeed

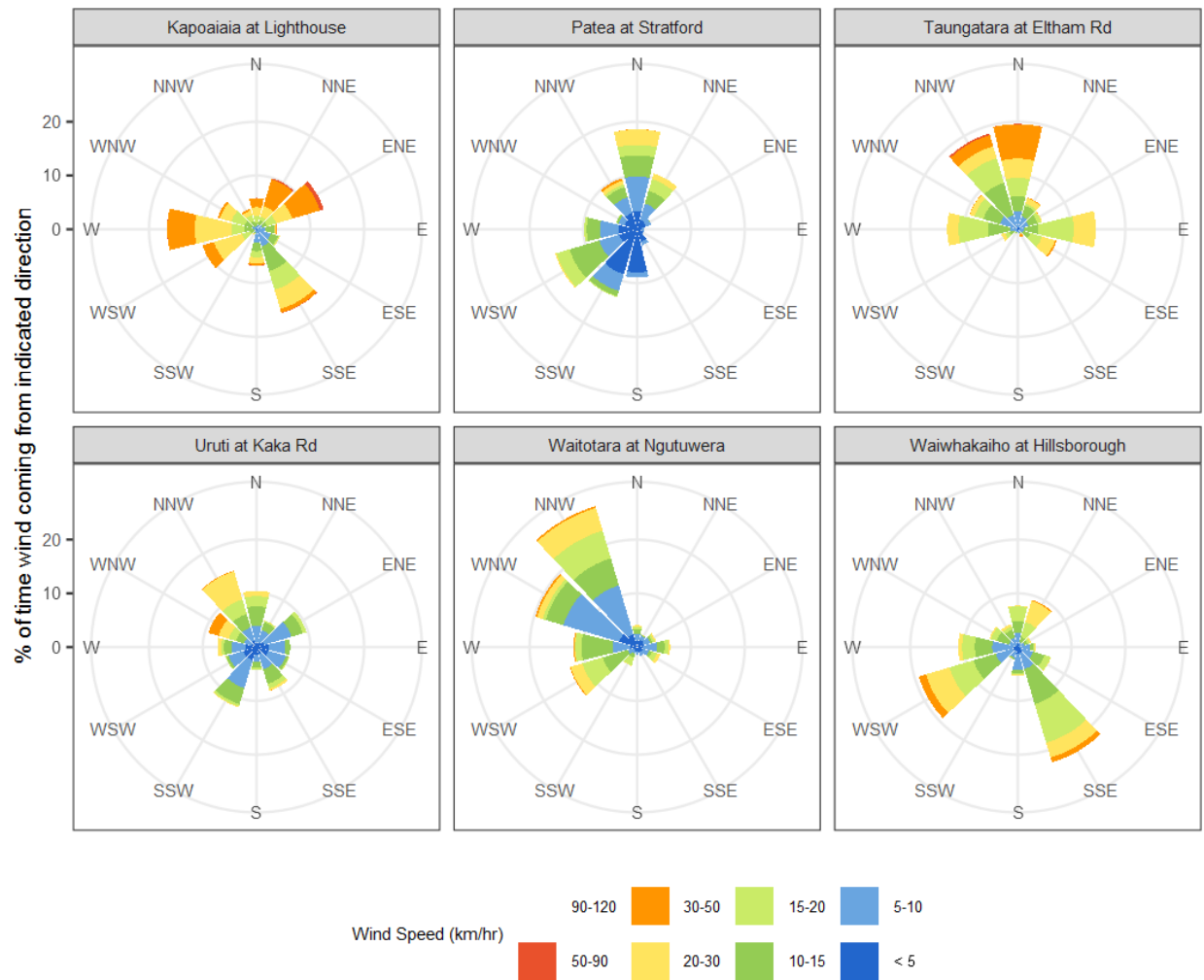


Figure 7.3: Wind roses for June for average wind speed (km/hr).

Maximum gust strength

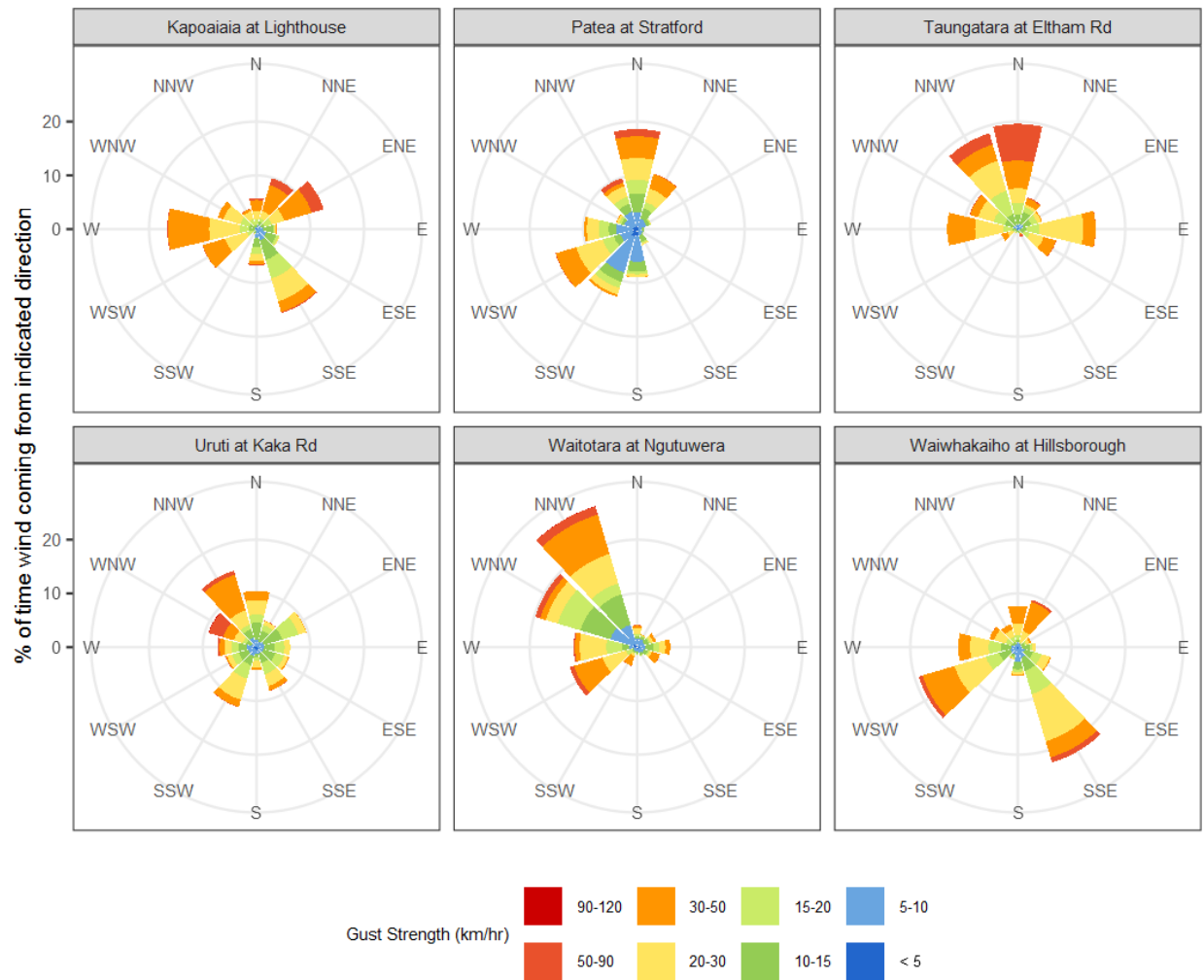


Figure 7.4: Wind roses for June for maximum wind gust (km/hr).

Summary of month's conditions

Rainfall

On average there was 200mm of rainfall in June, 20% more than usual, ranging from 25% less rain than usual at Waitōtara at Rimunui Station, and 55% more rain than usual at Pātea at Stratford.

Year-to-date rainfall is lowest at Waitōtara at Rimunui Station with 38% less rainfall than normal, Pātea at Stratford has had the highest year-to-date rainfall with 11% more rainfall than normal, on average there has been 15% less year-to-date rainfall than normal across all rain gauges. Compared to typical full year totals, on average sites have already received 39% of a typical year's rainfall, with the highest value at Pātea at Stratford, 50% of normal, whereas Waitōtara at Rimunui Station sits at 28% of the typical year's total.

River Flow

Mean river flows for June were 8.6% greater than typical values, low flows were 61.7% greater, and high flows 45% greater than typical values. The maximum river flow recorded in June was 501.9 m³/sec at Waitara at Bertrand Rd on 28 June.

River Water Temperature

Mean river (non-mountain) water temperatures were 11.1°C, an average of 0.4°C warmer than long-term June values. Nighttime-low water temperatures were on average 0.5°C warmer than historic lows, and day-time high temperatures were on average 0.2°C warmer than historic highs. The maximum river water temperature recorded in June was 15°C at Mangaone 3 at Stub Rd on 5 June.

Air Temperature

The average air temperature for the region (excluding Te Maunga sites) was 11.1°C, which is 0.3°C warmer than long-term June averages. Low air temperatures for June were on average 0.6°C warmer than the June average for previous years. Day-time high temperatures were on average 0.4°C warmer than historic highs. The maximum air temperature recorded in June was 19.4°C at Weraweraonga at Mangawhio Rd on 26 June.

Soil Moisture

The average soil moisture for June across sites in Taranaki region was 32.8%. Soil moistures were on average 1% drier than typical June values. On average, low soil moistures were 2.2% wetter than previous lows, and the highs were on average 2.9% drier than previous values for June.

Soil Temperature

June soil temperatures were generally 0.4°C warmer than long-term averages. Average nighttime low soil temperatures were 1.1°C warmer than recorded lows, and upper day-time soil temperatures were on average 0.3°C warmer than long-term June highs. The

maximum soil temperature recorded in June was 14.7°C at Motunui M39 at Weston W3, on 5 June.

Wind Speed (average and 10 minute gust)

June average wind speeds were 12.4km/hr, with average gust strength of 44.1km/hr, these were 0.2km/hr stronger, and 3.2km/hr gustier than the long-term average. Average calm weather wind speeds were 0.2km/hr stronger than recorded lows, and windy conditions were on average 0.3km/hr stronger than long-term June highs. The maximum wind gust recorded in June was 102.96km/hr at Uruti at Kaka Rd on 4 June.

Report date: 9 July 2025.

Supply of environmental data - General terms and conditions

The enclosed information is the highest quality data the Taranaki Regional Council (the Council) is currently able to provide. Some or all of the data being provided may not yet have been audited however and is therefore subject to change.

As we endeavour to continuously improve our products, we also reserve the right to further amend data where necessary and without notice at any time. As a result, the information supplied to you now may not be the same as that subsequently produced for you or any other requestor.

While the Council has exercised all reasonable skill and care in controlling the contents of the information, you should independently check the information provided if the accuracy of that information is important to you.

Under no circumstances will the Council, its employees or agents be liable in contract, tort or otherwise to compensate you for any loss, injury or damage (including loss of profits or consequential loss) arising directly or indirectly from the supply by the Council or its agents of inadequate, inaccurate or incorrect environmental data.

Any use of the material supplied, for example, by inclusion in a report or a media release, should be accompanied by an acknowledgment of the source of the data. We also request that any outputs generated through the use of the information provided be provided to the Council.