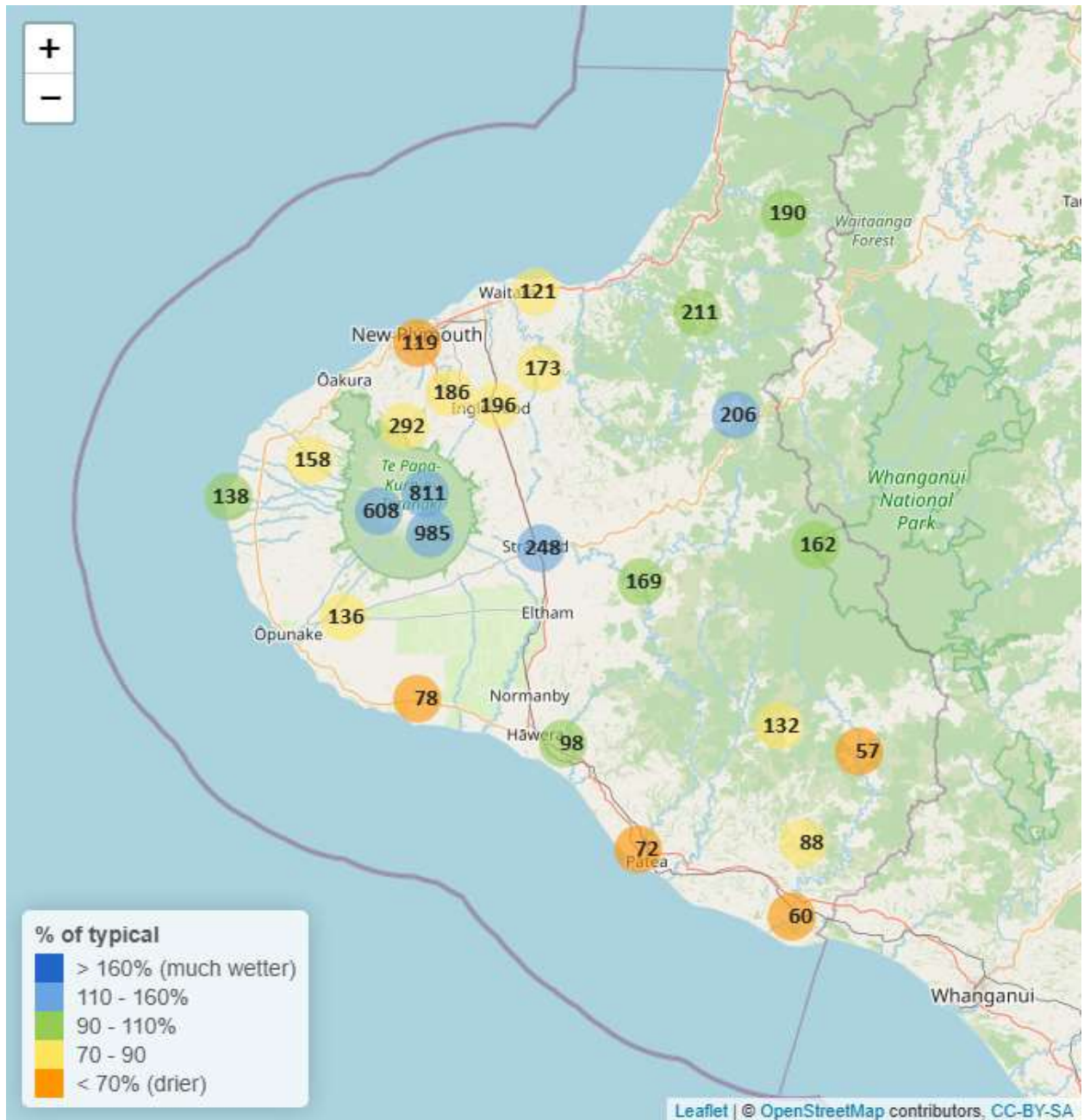


Taranaki Regional Council Monthly Rainfall and Environmental Data Report for May 2025

Note: The data presented here are provisional data only and may change as a result of quality control at a later date.

1. Rainfall

Map 1: May total rainfall (mm) and percentage of long-term mean (colour key).



Map 1a. Total rainfall 1 January to end May (mm) and percentage of long-term mean (colour key).

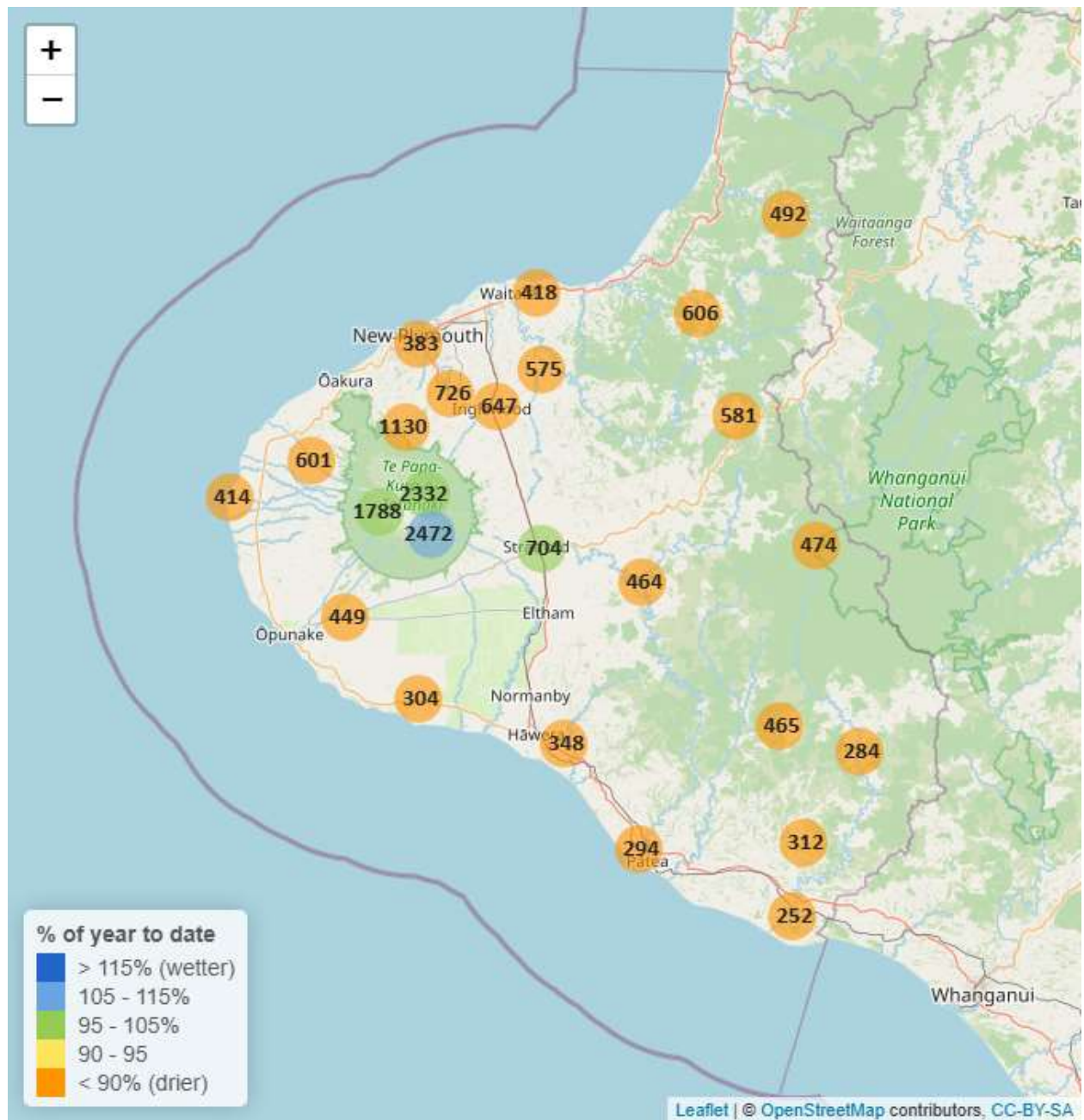


Table 1: Rainfall May and year-to-date totals for rain gauge sites in Taranaki.

	May			Year to Date			
Rain gauge	# days with rain	Total rain (mm)	% of typical month	Total to date (mm)	% of typical year to date	% of typical full year	Records Began
North Egmont at Visitors Centre	13	811.0	119.8	2332.0	100.1	34.5	1996
Dawson Falls	15	985.0	143.3	2472.0	112.8	38.8	1999
Kapoaiaia at Kahui Hut	20	608.5	117.7	1788.0	99.5	34.2	2006
Mangorei Upper at Forest Hill	13	292.0	73.3	1129.5	87.9	31.1	2018
Waiwhakaiho at Hillsborough	10	147.0	77.9	458.0	66.1	25.4	2013
Brooklands Zoo at New Plymouth	10	119.0	69.3	383.4	62.2	24.2	2012
Motunui M39 at Weston W3	9	120.6	74.5	417.6	71.7	26.5	1999
Waiwhakaiho at Egmont Village	8	185.5	79.7	726.0	86.1	30.3	1996
Manganui at Everett Park	8	173.0	84.6	575.0	77.6	27.6	1996
Inglewood at Oxidation Ponds	8	195.5	85.5	647.0	78.6	27.6	2000
Stony at Mangatete Bridge	11	158.5	78.2	601.0	81.3	30.2	2004
Kapoaiaia at Lighthouse	9	138.4	97.3	414.0	81.7	30.9	1999
Taungatara at Eltham Rd	11	135.5	81.8	449.0	79.2	28.7	2005
Kaupokonui at Glenn Rd	10	77.5	67.1	304.0	71.8	26.3	1998
Patea at Stratford	11	248.5	115.1	703.5	99.1	35.6	1999
Mangaehu at Bridge	11	169.0	106.8	464.0	79.8	29.3	1999
Kotare at OSullivans	12	190.0	90.4	492.0	66.2	22.9	1998
Uruti at Kaka Rd	9	211.0	102.9	606.5	79.1	27.5	1996
Pohokura Saddle	10	206.0	111.4	581.0	84.7	29.2	1996
Omaru at Charlies	11	162.0	95.5	473.5	74.3	26.0	2006
Omahine at Moana Trig	13	132.5	78.1	465.0	75.5	27.8	2007

	May			Year to Date			
Rain gauge	# days with rain	Total rain (mm)	% of typical month	Total to date (mm)	% of typical year to date	% of typical full year	Records Began
Waitotara at Rimunui Station	7	57.0	43.2	284.0	58.8	20.8	1996
Waitotara at Ngutuwera	11	87.5	73.0	312.0	67.7	24.4	1999
Tawhiti at Duffys	9	98.0	92.1	347.5	85.9	31.5	1996
Patea at Bore 3	9	72.0	61.9	294.0	67.2	25.1	2006
Waitotara at Hawken Rd	8	59.6	50.8	251.8	54.1	21.9	2016

Notes: Low and high values in tables refer to the upper and lower 5th percentiles of the historic record for each site (except for wind gust and soil moisture which are the upper and lower 1st percentiles). Percentile values give a better indication of the general upper and lower range of the historic data against which to compare the current month. Start year (records began) shows the length of data used to compute historic highs, lows, and "typical values". Sites with a longer data record will generally provide a more reliable comparison to values in the current year.

1.2 Long-term data patterns

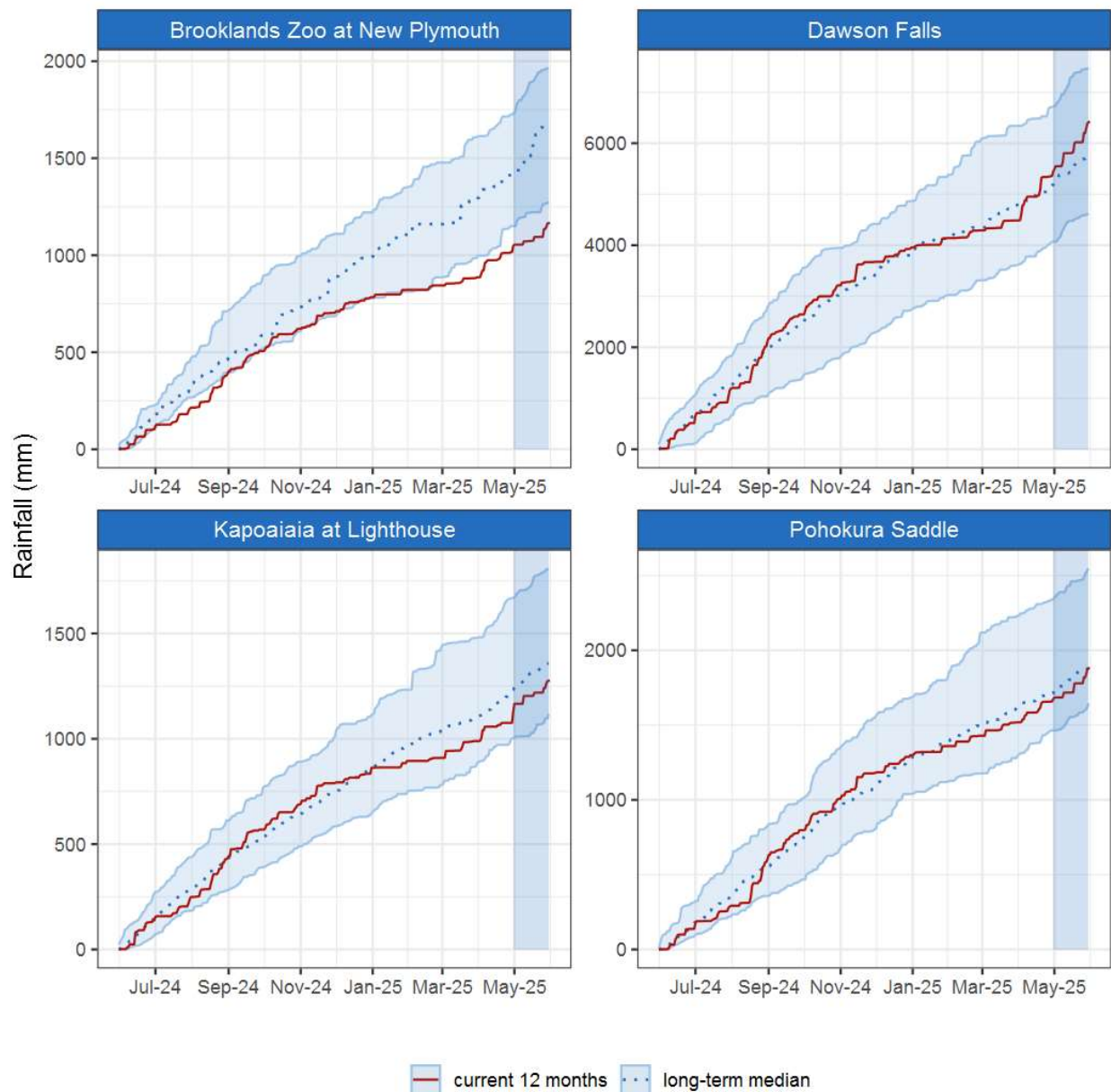


Figure 1.1: This year's and last year's data set in context of historic record at selected rain gauge sites in Taranaki.

1.3 Monthly Bar Charts

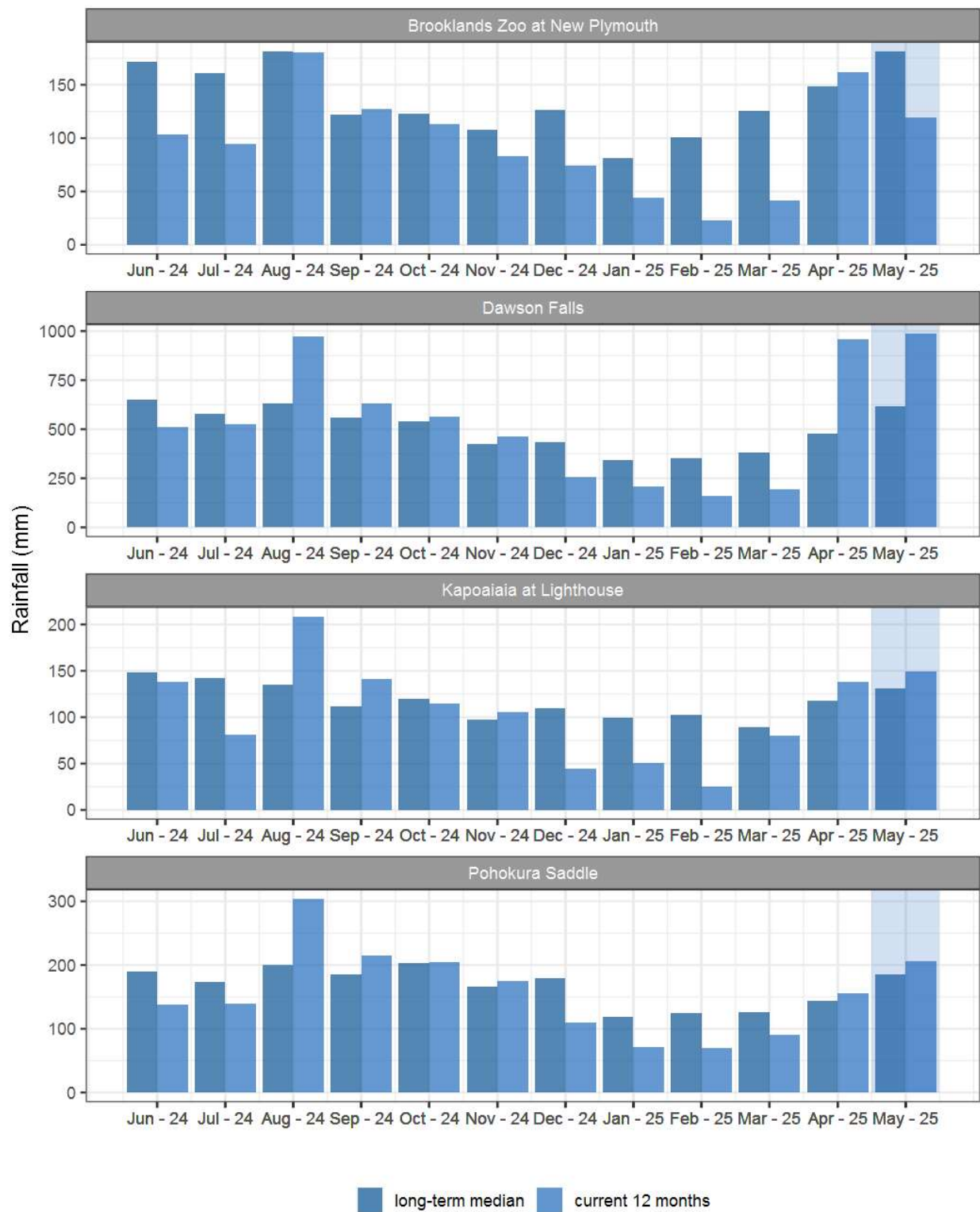


Figure 1.2: Monthly rainfall totals for this month and the mean of all previously recorded months.

2. River Flow

Map 2: May mean river flows (m³/sec), with difference as percentage of long-term mean.



Table 2: Summary of high, low and mean flow for May and for May in all preceding years of record.

May 2025 - Recorded flows (m3/sec)								
	Highs		Lows		Mean			
River and Site	current month	historic	current month	historic	current month	historic	May maximum	Data years
Kapoaiaia at Lighthouse	2.85	3.73	0.49	0.34	0.71	0.77	9.55	38
Kaupokonui at Glenn Rd	13.94	8.67	1.29	0.88	2.61	2.01	41.73	47
Mangaehu at Bridge	40.21	43.32	3.00	2.89	5.02	7.28	59.45	47
Manganui at Everett Park	95.65	70.98	7.09	4.14	12.40	10.57	369.44	32
Mangawheroiti Above Intake W.W	1.65	1.25	0.21	0.16	0.30	0.33	6.23	12
Moumahaki at Johnston Rd	3.73	7.61	0.50	0.53	0.65	1.00	12.83	7
Ngatoro at SH3	5.74	4.13	0.46	0.32	0.69	0.66	39.36	35
Oakura at Victoria Rd	14.86	14.16	1.11	0.59	1.85	1.69	62.22	6
Patea at McColls Bridge	66.16	73.39	3.40	2.62	20.70	23.24	70.36	34
Patea at Skinner Rd	24.95	17.15	3.22	1.25	6.10	3.77	97.04	47
Tangahoe below Railway Bridge	14.34	20.03	1.32	1.18	1.98	2.84	54.13	7
Timaru at Tataraimaka	6.32	7.92	0.61	0.39	0.98	1.22	39.62	12
Waingongoro at Eltham Rd	12.75	8.88	1.47	0.53	3.00	1.91	50.35	50
Waingongoro at SH45	22.96	19.85	4.49	1.64	7.95	4.87	55.55	44
Waiongana at SH3a	8.52	8.72	1.00	0.56	1.77	1.77	30.62	45
Waitara at Bertrand Rd	264.35	211.19	17.51	9.25	35.60	34.34	462.11	45
Waitara at Purangi Bridge	100.76	104.56	2.41	1.22	7.32	8.88	165.10	26
Waitotara at Rimunui Station	25.83	61.06	3.60	3.05	4.80	9.79	45.95	20
Waiwhakaiho at Egmont Village	27.47	24.98	2.81	2.21	3.97	4.24	126.39	45
Waiwhakaiho at Vickers Rd	42.45	51.44	1.83	1.98	5.05	6.76	256.13	5
Warea at Coast	4.65	4.71	0.79	0.39	1.34	0.88	12.87	8

2.2 Long-term data patterns

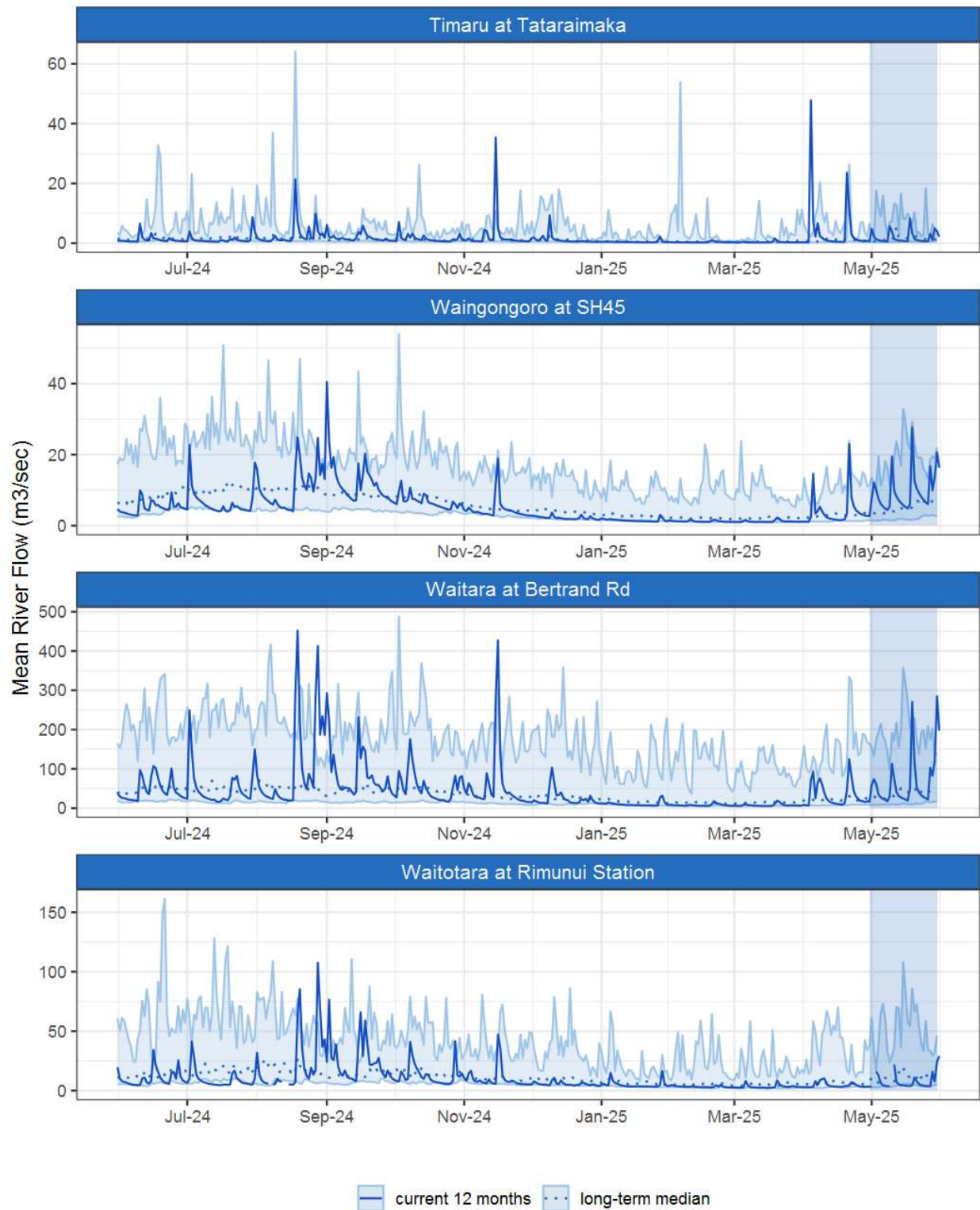


Figure 2.1: Running average river flows for selected sites, set in context of the historic record.

2.3 Monthly Bar Charts

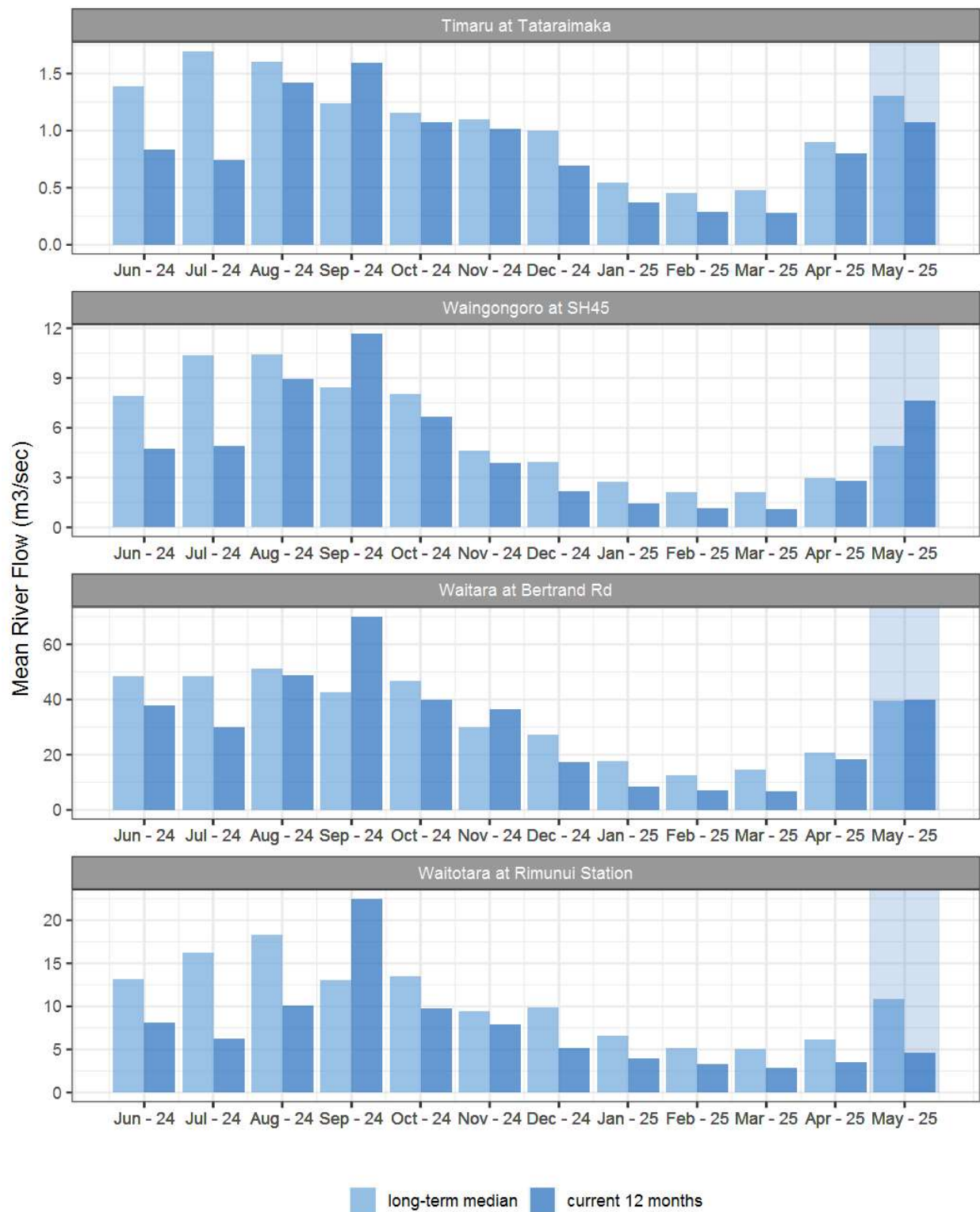


Figure 2.2: Monthly mean river flow for this month and the mean of all previously recorded months.

3. River Temperature

Map 3: May mean water temperature with difference to long-term mean (°C).

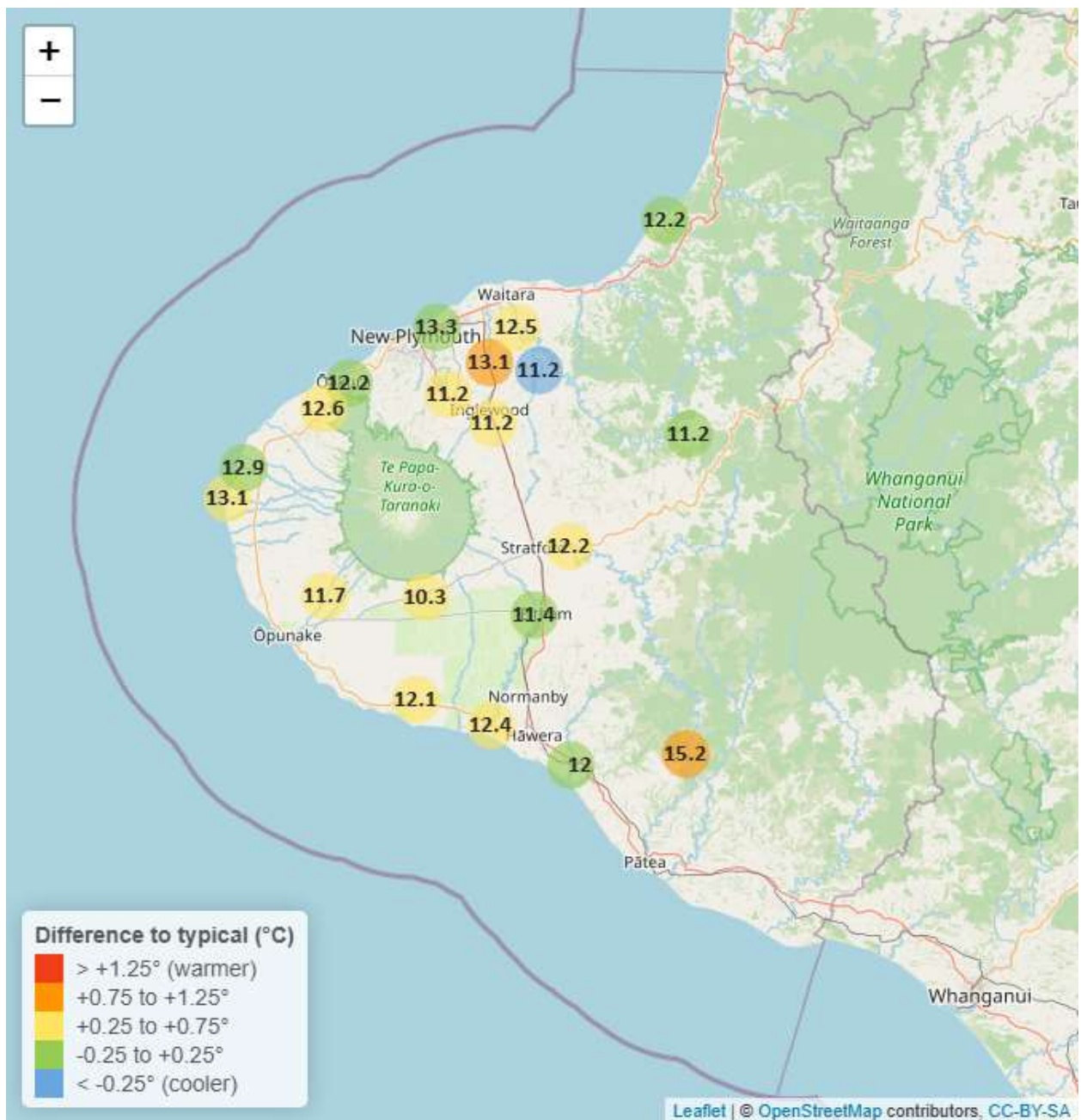


Table 3: Summary of high, low and mean river temperature for May and for May in all preceding years of record.

May 2025 - River Temperature (°C)								
	Highs		Lows		Mean			
River and Site	current month	historic	current month	historic	current month	historic	May maximum	Data years
Kapoaiaia at Lighthouse	15.64	15.73	10.88	9.21	13.07	12.70	16.53	25
Kaupokonui at Glenn Rd	14.37	14.93	10.15	8.71	12.11	11.84	15.61	33
Manganui at Everett Park	13.24	14.63	9.20	8.77	11.17	11.73	15.23	15
Mangaone 3 at Stub Rd	15.88	16.36	11.45	10.74	13.35	13.22	17.32	5
Mangawheroiti Above Intake W.W	11.95	12.20	8.65	7.38	10.29	9.76	12.64	12
Matau at Woolshed	13.26	13.96	8.48	8.02	11.17	11.15	14.52	7
Ngatoro at SH3	13.10	13.65	9.10	7.86	11.20	10.75	13.88	23
Oakura at Victoria Rd	14.14	14.71	10.41	9.29	12.25	12.03	15.23	6
Patea at McColls Bridge	15.81	16.42	13.60	12.12	15.17	14.11	16.85	9
Patea at Skinner Rd	14.01	13.99	10.37	8.67	12.16	11.50	15.44	21
Tangahoe below Railway Bridge	14.07	14.97	9.40	8.50	11.99	11.91	15.48	7
Timaru at Tataraimaka	14.19	14.64	10.77	9.20	12.59	12.22	15.58	11
Waiaua 2 at Barraclough Opua	13.78	14.34	9.28	7.97	11.66	11.00	14.77	6
Waikaramarama at Bridge	14.37	15.29	10.29	9.35	12.17	12.40	15.87	7
Waingongoro at Eltham Rd	12.87	13.67	9.58	8.42	11.40	11.27	14.50	20
Waingongoro at SH45	14.11	14.95	10.30	8.99	12.40	12.06	16.20	20
Waiongana at SH3a	15.04	15.01	10.89	9.19	13.13	12.32	16.79	14
Waitara at Bertrand Rd	14.56	14.71	10.76	9.60	12.47	12.09	16.31	38
Waiwhakaiho at Egmont Village	13.03	13.54	9.33	8.07	11.20	10.84	13.90	33
Warea at Coast	15.45	16.04	10.67	9.78	12.95	12.89	16.76	5

3.2 Long-term data patterns

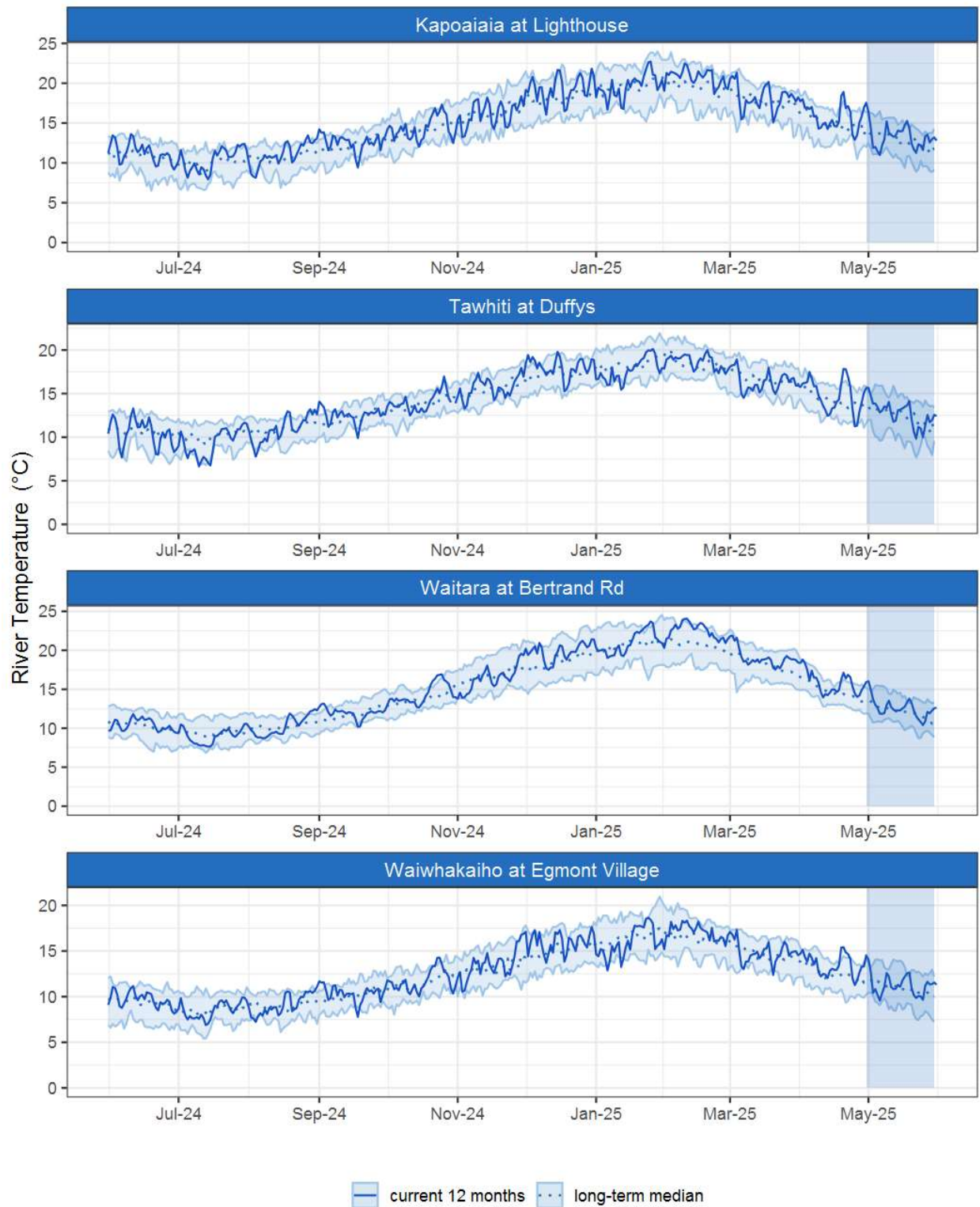


Figure 3.1: Running average river temperature for selected sites, set in context of the historic record.

3.3 Monthly Bar Charts

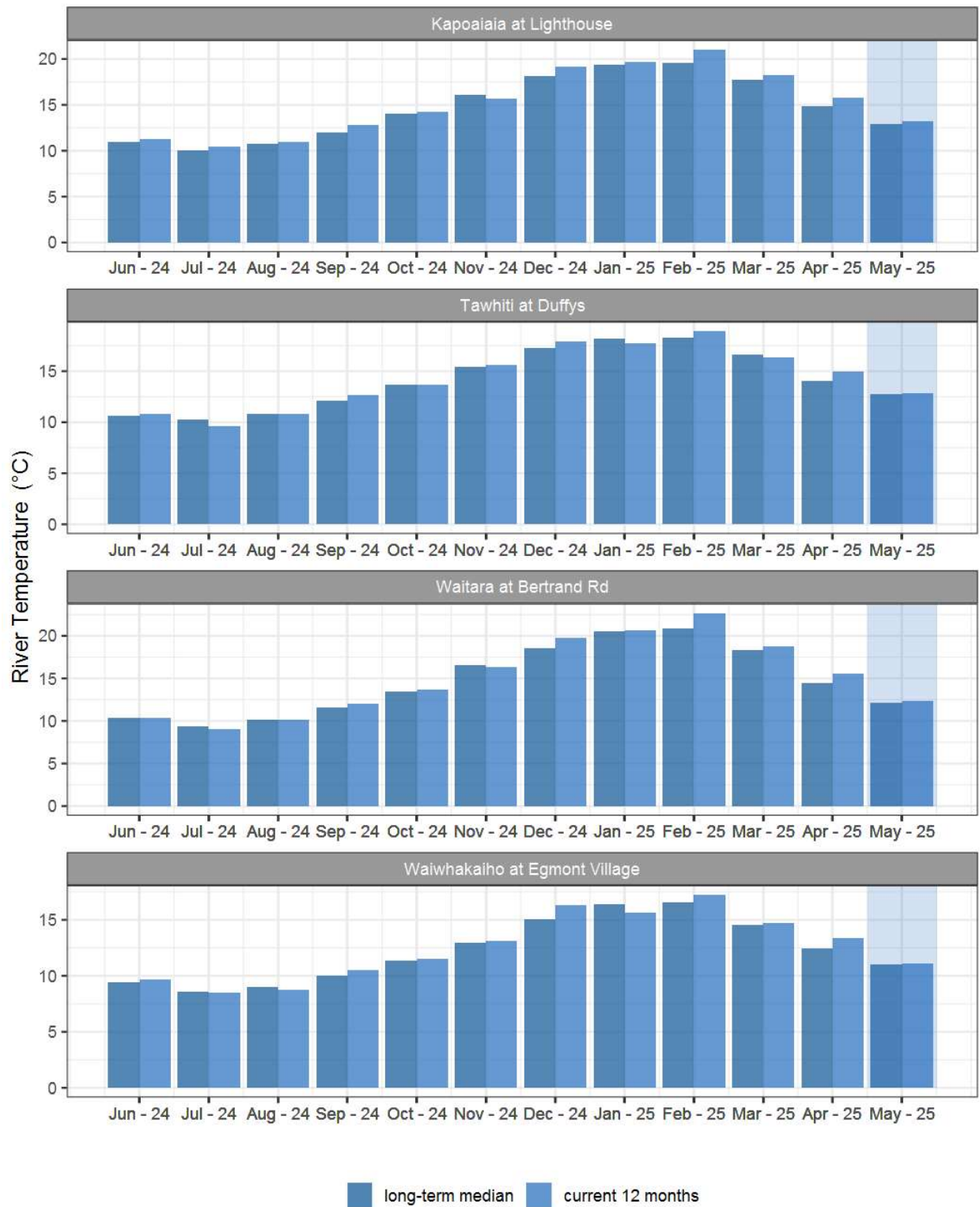


Figure 3.2: Monthly mean river temperature for this month and the mean of all previously recorded months.

4. Air Temperature

Map 4: May mean air temperature with difference to long-term mean (°C).

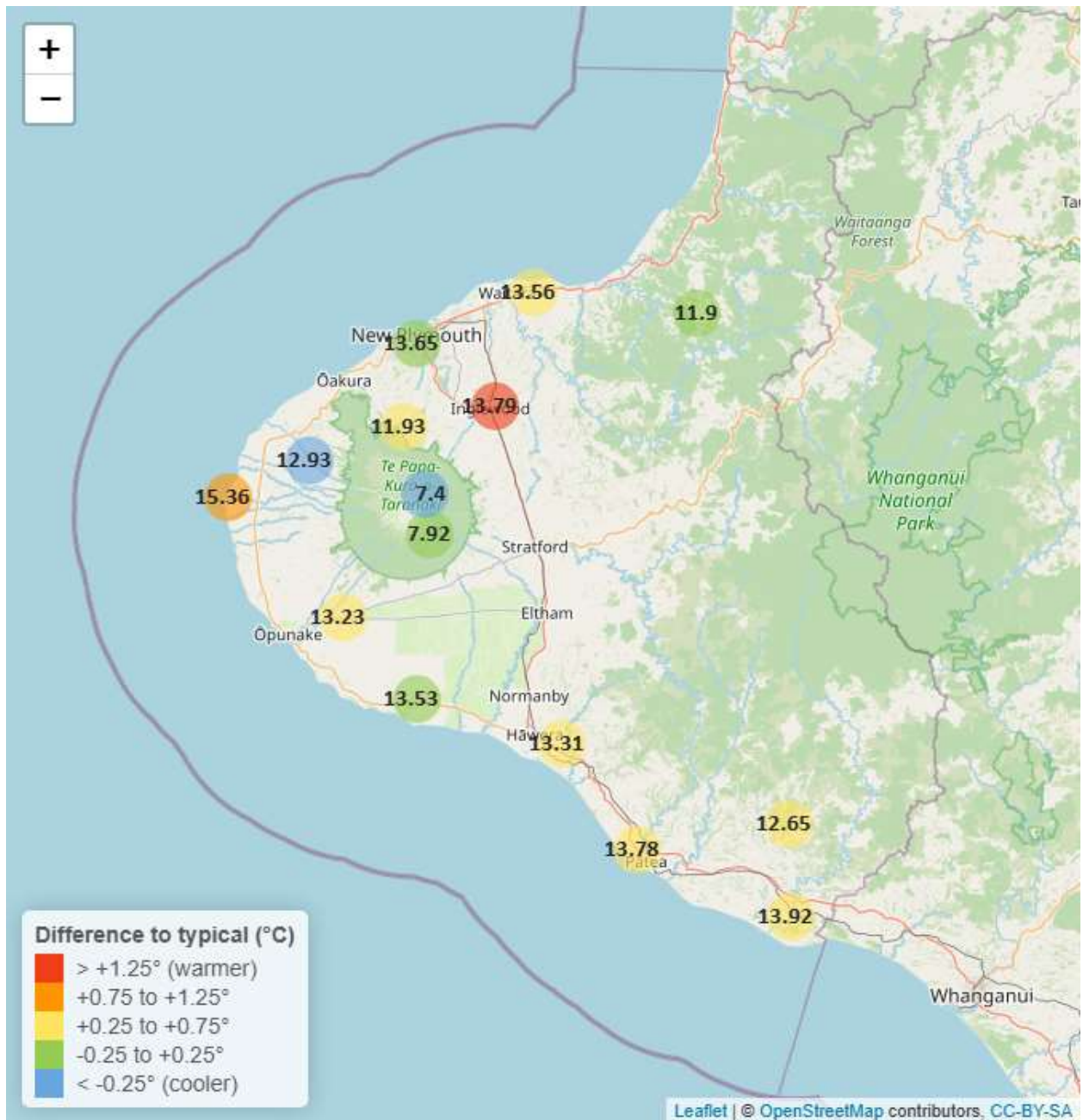


Table 4: Summary of high, low and mean air temperature for May and for May in all preceding years of record.

May 2025 - Air Temperature (°C)								
	Highs		Lows		Mean			
Site	current month	historic	current month	historic	current month	historic	May maximum	Data years
Brooklands Zoo at New Plymouth	18.86	18.71	8.23	7.16	13.65	13.52	20.93	13
Dawson Falls	12.30	13.32	4.12	2.93	7.92	7.95	13.90	9
Inglewood at Oxidation Ponds	18.70	17.28	7.37	4.66	13.79	11.83	20.67	13
Kapoaiaia at Lighthouse	18.06	18.15	8.99	8.06	15.36	14.61	19.43	13
Kaupokonui at Glenn Rd	17.42	18.51	5.89	6.18	13.53	13.49	20.66	10
Mangorei Upper at Forest Hill	15.29	15.55	7.07	6.07	11.93	11.33	17.34	8
Motunui M39 at Weston W3	17.42	17.79	7.51	6.59	13.56	13.17	19.08	8
North Egmont at Visitors Centre	11.14	12.91	2.88	2.55	7.40	7.87	15.45	9
Patea at Bore 3	17.59	18.38	7.02	6.80	13.78	13.40	20.30	12
Stony at Mangatete Bridge	16.58	17.68	8.22	7.66	12.93	13.23	18.83	9
Taungatara at Eltham Rd	17.00	17.66	7.05	6.51	13.23	12.80	20.12	10
Tawhiti at Duffys	17.67	18.16	2.12	2.80	13.31	12.95	19.98	12
Uruti at Kaka Rd	15.83	16.35	7.11	5.98	11.90	11.69	17.51	7
Waitotara at Hawken Rd	19.06	18.61	6.61	6.42	13.92	13.37	21.70	9
Weraweraonga at Mangawhio Rd	18.22	18.44	3.76	3.87	12.65	11.99	20.85	8

4.2 Long-term data patterns



Figure 4.1: Running average air temperature for selected sites, set in context of the historic record.

4.3 Monthly Bar Charts



Figure 4.2: Monthly mean air temperature for May and the mean of all previously recorded months.

5. Soil Moisture

Map 5: May mean soil moisture content (%).

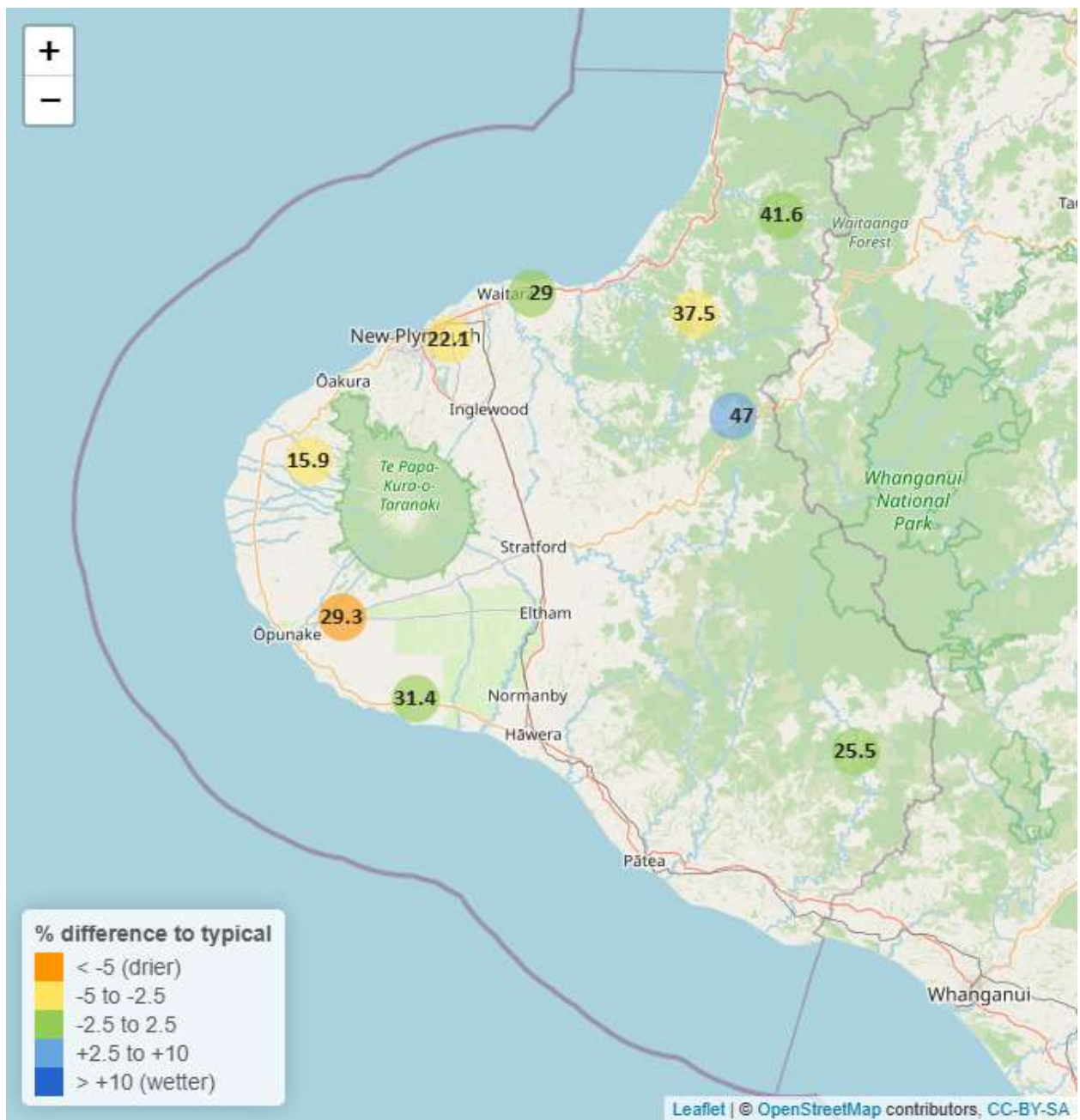


Table 5: Summary of high, low and mean soil moisture for May and for May in all preceding years of record.

May 2025 - Soil Moisture (%)								
	Highs		Lows		Mean			
Site	current month	historic	current month	historic	current month	historic	May maximum	Data years
Kaupokonui at Glenn Rd	32.60	41.53	30.71	20.34	31.42	32.60	32.71	14
Kotare at OSullivans	47.61	49.14	39.79	32.30	41.57	40.34	54.73	13
Motunui M39 at Weston W3	30.18	31.62	28.52	17.45	29.05	29.18	30.66	12
Pohokura Saddle	55.00	51.90	44.41	31.65	46.95	43.59	57.81	11
Stony at Mangatete Bridge	19.68	24.51	14.27	9.44	15.95	18.70	22.90	9
Taungatara at Eltham Rd	32.77	43.21	27.81	26.06	29.30	37.20	35.15	11
Uruti at Kaka Rd	41.14	44.52	36.16	35.30	37.55	40.55	43.82	14
Waitotara at Rimunui Station	27.89	31.31	24.51	24.38	25.51	27.78	28.92	8
Waiwhakaiho at Hillsborough	25.05	31.45	21.35	22.65	22.11	26.97	26.67	13

5.2 Long-term data patterns

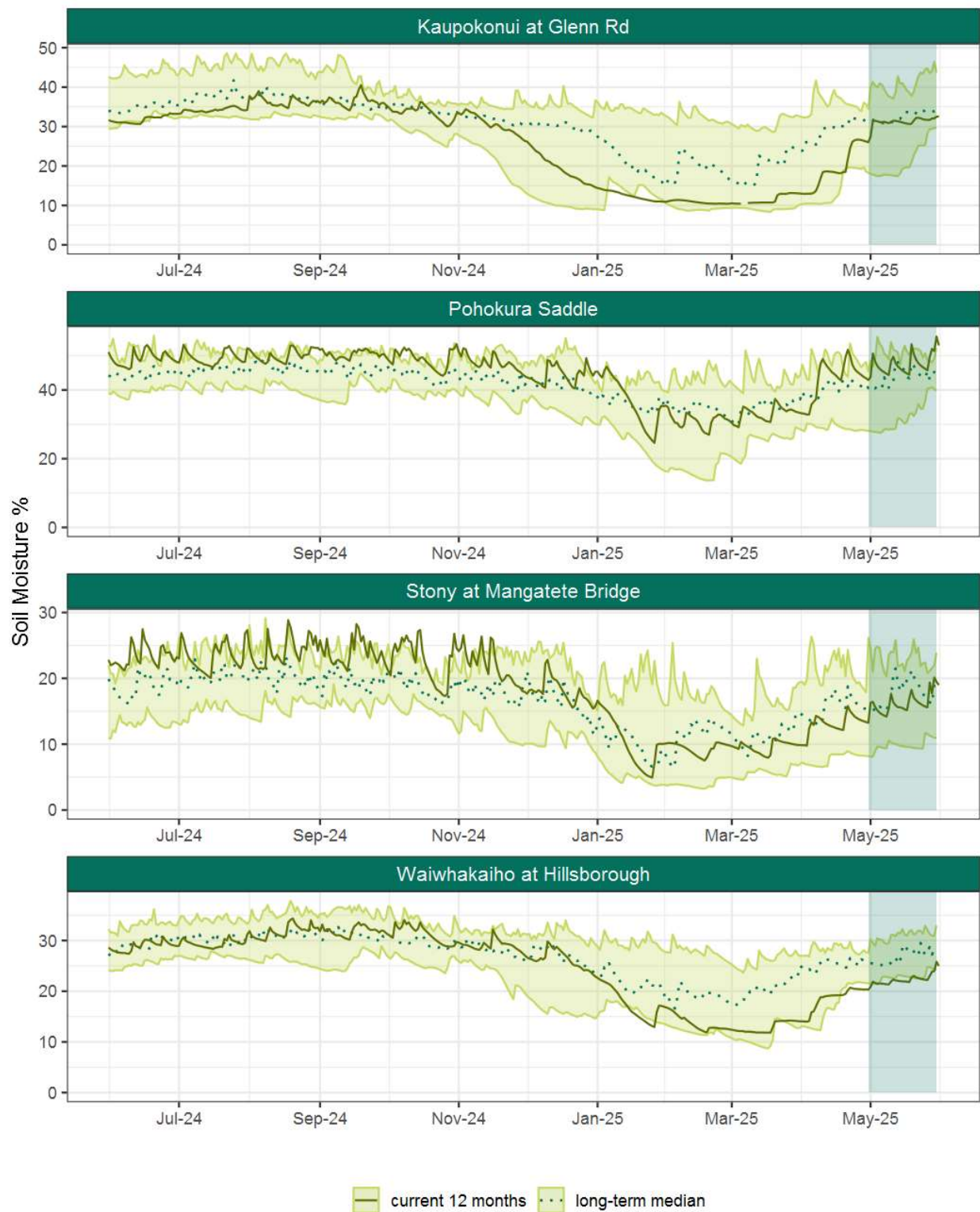


Figure 5.1: Running average soil moisture for selected sites, set in context of the historic record.

5.3 Monthly Bar Charts

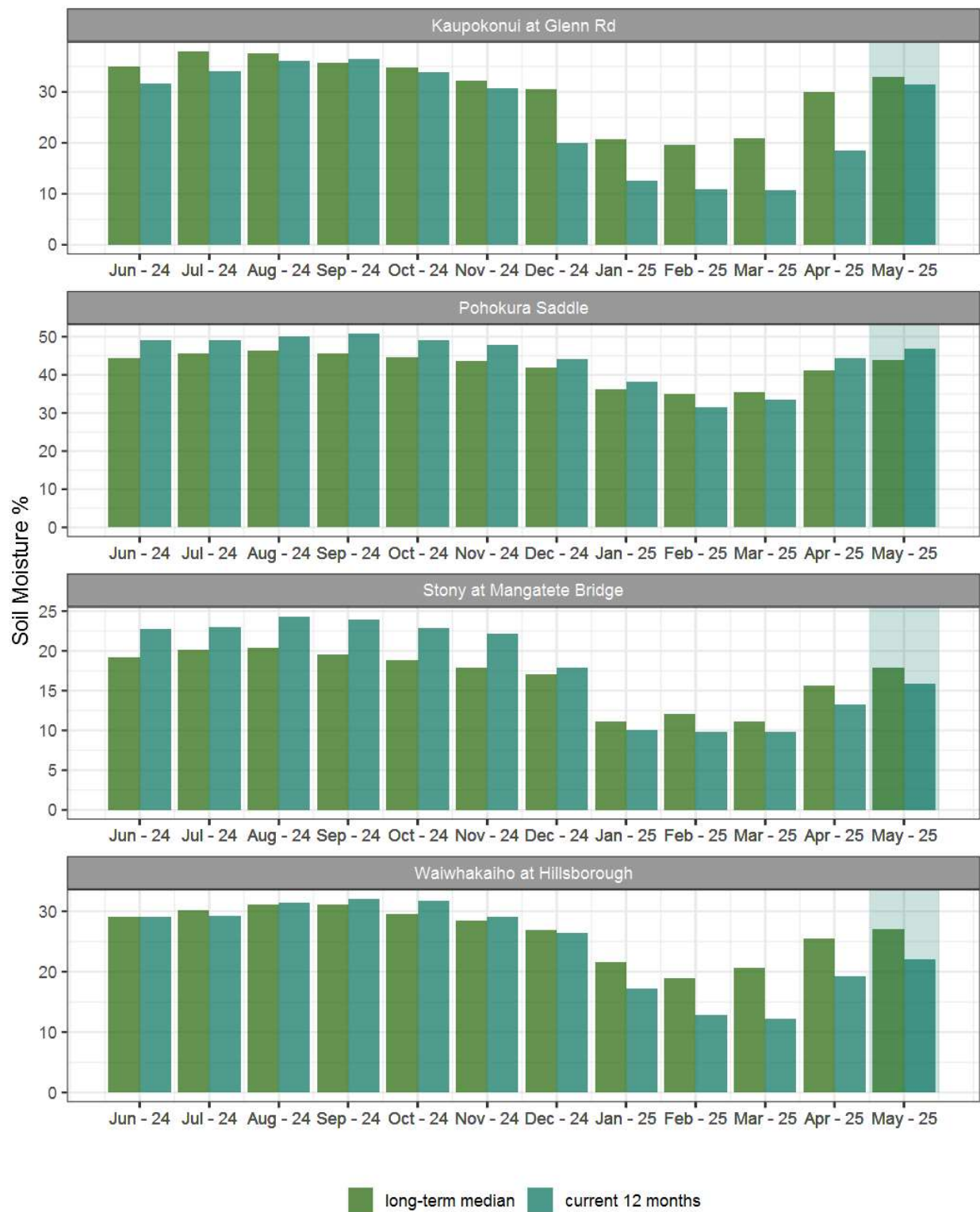


Figure 5.2: Monthly mean soil moisture for this month and the mean of all previously recorded months.

6. Soil Temperature

Map 6: May mean soil temperatures with difference to long-term mean (°C).

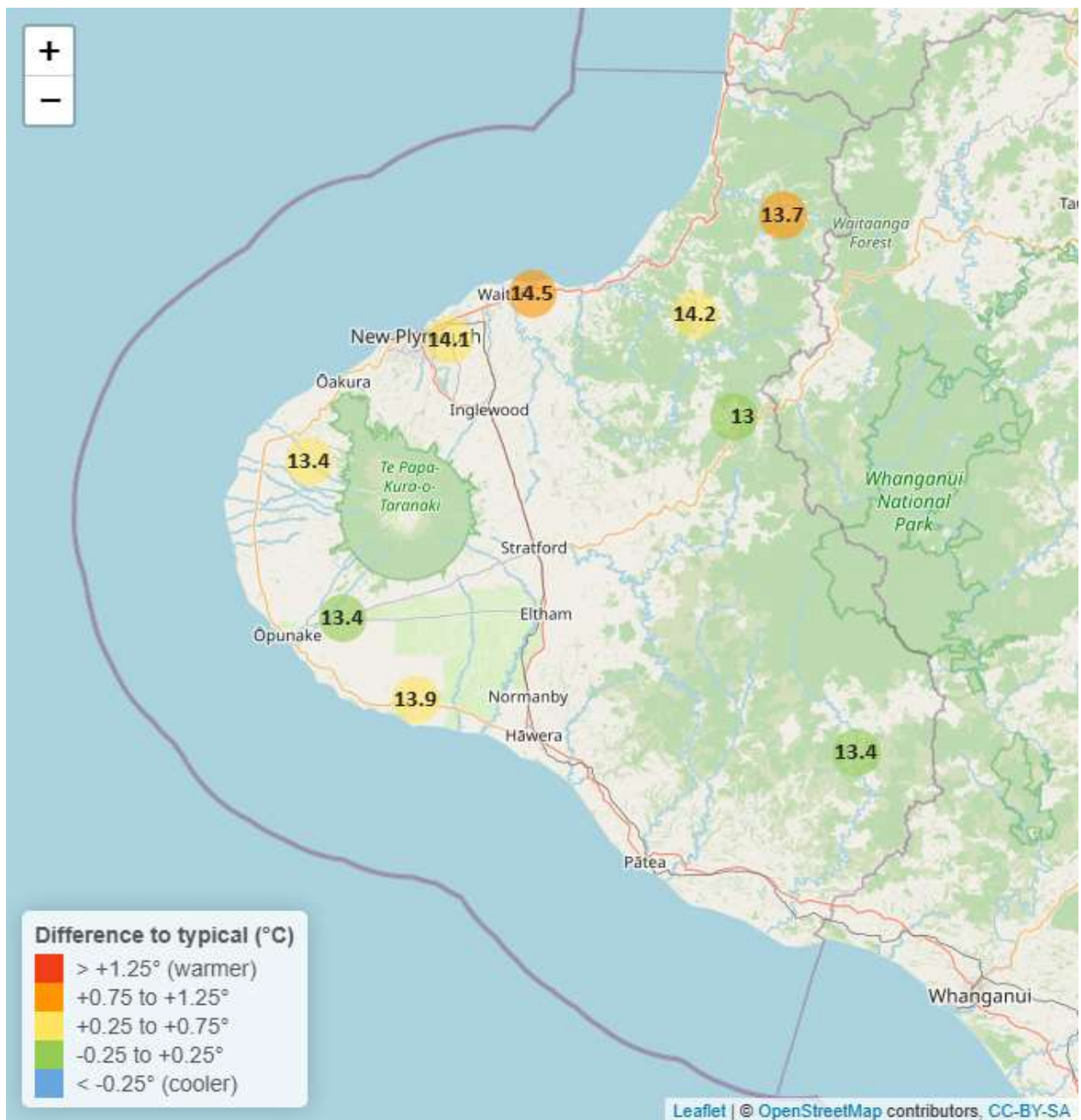


Table 6: Summary of high, low and mean soil temperature for May and for May in all preceding years of record.

May 2025 - Soil Temperatures (°C)								
	Highs		Lows		Mean			
Site	current month	historic	current month	historic	current month	historic	May maximum	Data years
Kaupokonui at Glenn Rd	15.60	16.21	12.40	11.26	13.9	13.59	17.16	14
Kotare at OSullivans	16.64	15.83	12.50	9.43	13.7	12.65	17.11	13
Motunui M39 at Weston W3	16.22	16.22	13.06	10.91	14.5	13.50	17.76	12
Pohokura Saddle	15.12	15.50	11.70	10.05	13.0	12.82	16.48	11
Stony at Mangatete Bridge	15.30	16.49	11.40	10.10	13.4	13.10	17.40	8
Taungatara at Eltham Rd	15.33	15.92	11.89	10.59	13.4	13.19	16.40	11
Uruti at Kaka Rd	16.72	15.89	12.60	10.43	14.2	13.50	17.08	14
Waitotara at Rimunui Station	15.71	16.28	11.88	10.34	13.4	13.55	17.14	8
Waiwhakaiho at Hillsborough	15.90	16.40	12.94	11.13	14.1	13.72	17.35	13

6.2 Long-term data patterns

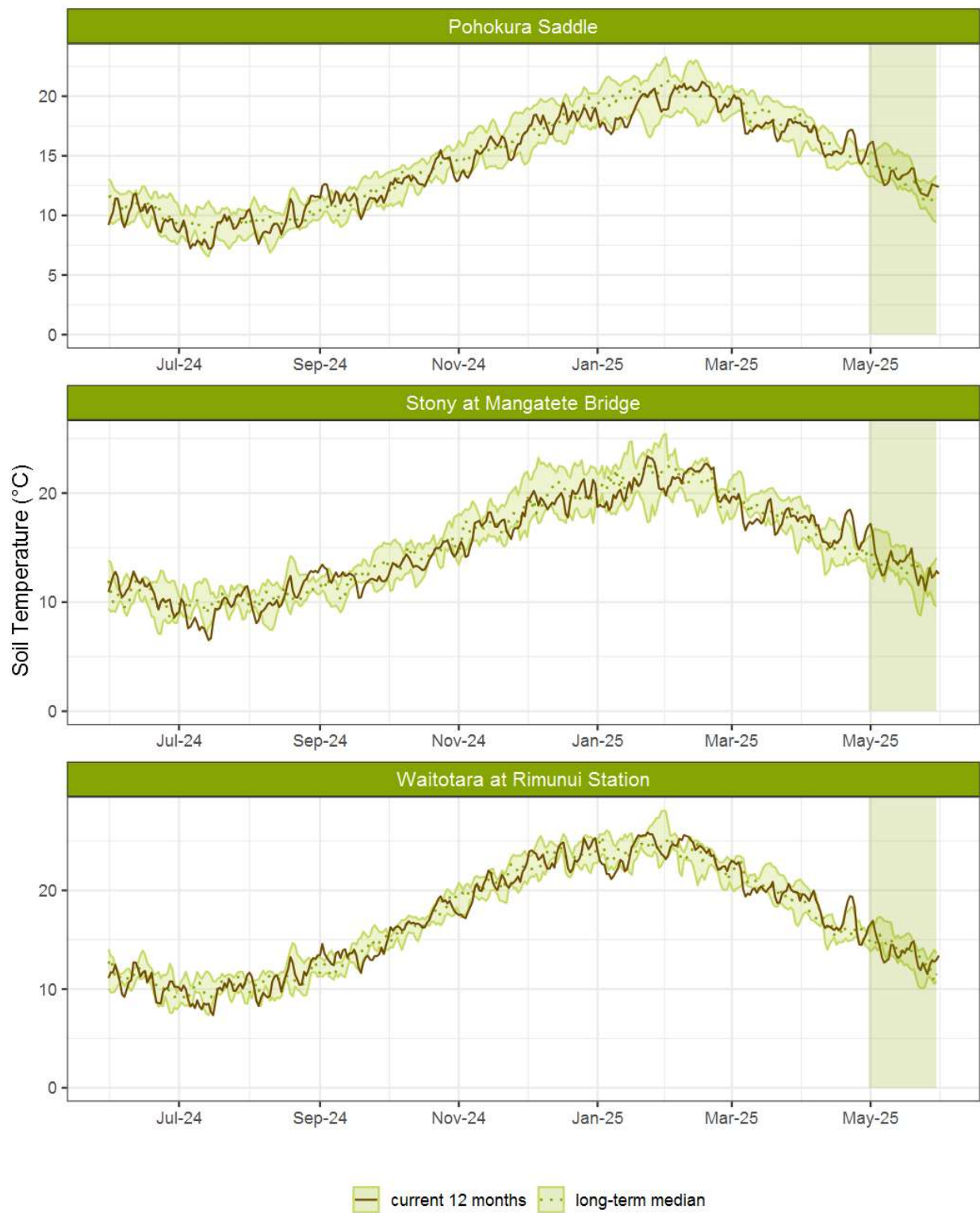


Figure 6.1: Running average soil temperature for selected sites, set in context of the historic record.

6.3 Monthly Bar Charts

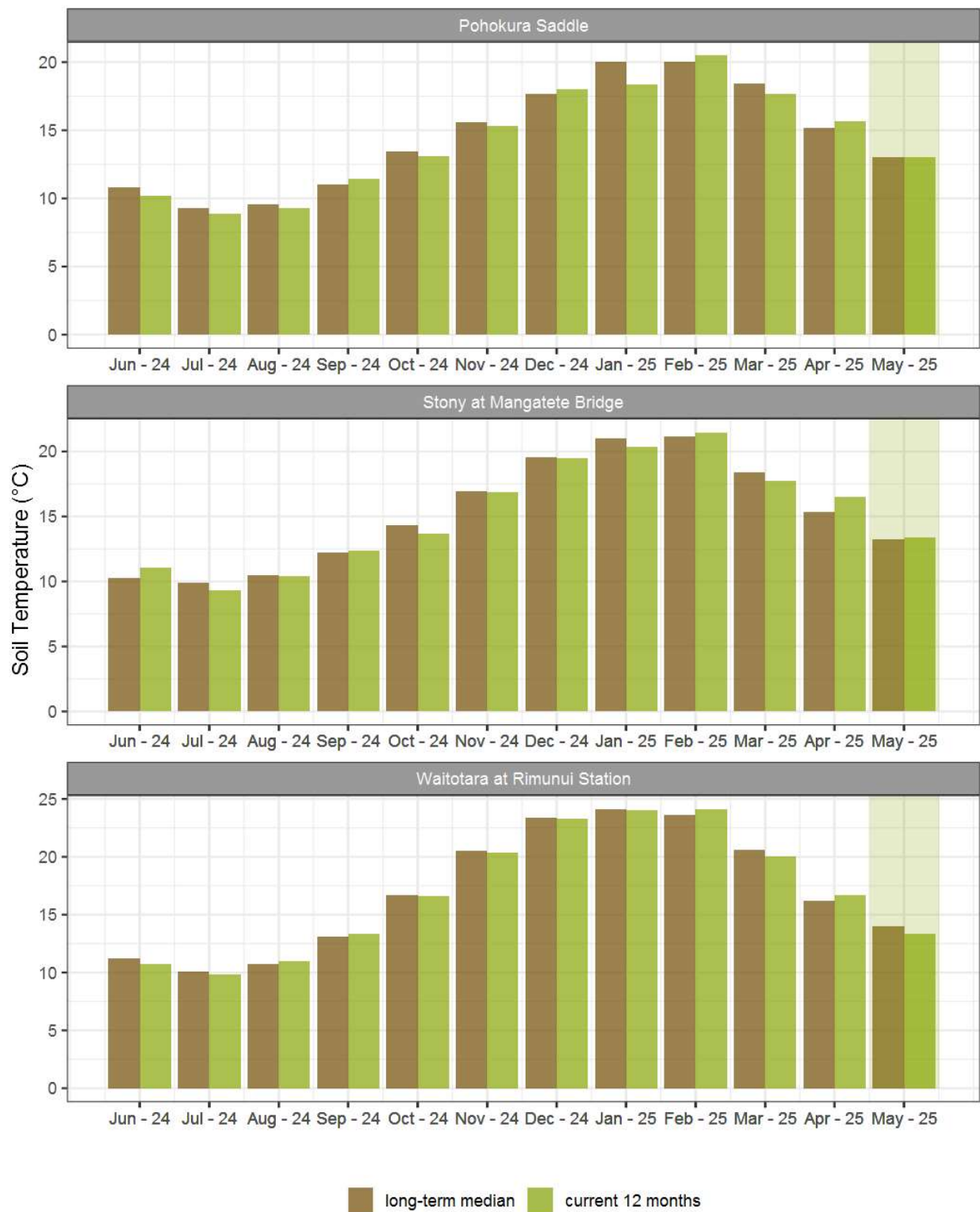


Figure 6.2: Monthly mean soil temperature for this month and the mean of all previously recorded months.

7. Wind Speed and Maximum Gusts

Map 7: May mean of wind speed with difference to long-term values (km/hr).



Table 7: Summary of high, low and mean wind speed for May and for May in all preceding years of record.

May 2025 - Wind Speed (average) - (km/hr)								
	Highs		Lows		Mean			
Site	current month	historic	current month	historic	current month	historic	May maximum	Data years
Hawera AWS	39.82	36.11	6.48	5.56	17.6	15.74	51.86	20
Kapoaiaia at Lighthouse	37.96	41.41	7.28	6.17	19.6	19.41	49.08	24
New Plymouth AWS	37.97	39.82	6.48	5.56	14.8	15.74	48.15	17
Patea at Stratford	17.94	17.70	2.42	2.30	5.4	6.19	26.59	19
Taungatara at Eltham Rd	32.22	32.62	6.23	6.45	13.3	14.86	53.76	9
Uruti at Kaka Rd	21.13	23.01	3.45	3.24	9.6	9.57	38.97	26
Waitotara at Ngutuweru	23.46	21.90	3.88	2.00	9.5	9.09	32.63	27
Waiwhakaiho at Hillsborough	26.35	29.56	4.59	3.89	11.1	11.74	40.28	8

Table 8: Summary of high, low and maximum wind gusts for May and for May in all preceding years of record.

May 2025 - Wind Gusts (Maximum) - (km/hr)								
	Highs		Lows		Mean			
Site	current month	historic	current month	historic	current month	historic	May maximum	Data years
Hawera AWS	75.93	74.17	27.78	18.52	44.5	42.60	79.64	20
Kapoaiaia at Lighthouse	61.20	81.50	24.84	20.20	41.0	48.10	61.92	24
New Plymouth AWS	74.08	81.49	25.93	20.37	44.5	44.45	77.78	17
Patea at Stratford	57.24	63.72	17.28	15.80	34.9	33.10	64.08	19
Taungatara at Eltham Rd	85.30	79.90	18.40	20.50	40.3	46.35	91.90	9
Uruti at Kaka Rd	70.20	73.50	22.32	17.90	40.7	36.00	78.12	25
Waitotara at Ngutuweru	70.20	69.84	23.04	16.70	46.4	37.00	81.72	26
Waiwhakaiho at Hillsborough	65.80	72.80	19.50	18.20	41.7	40.50	71.30	7

7.2 Long-term data patterns

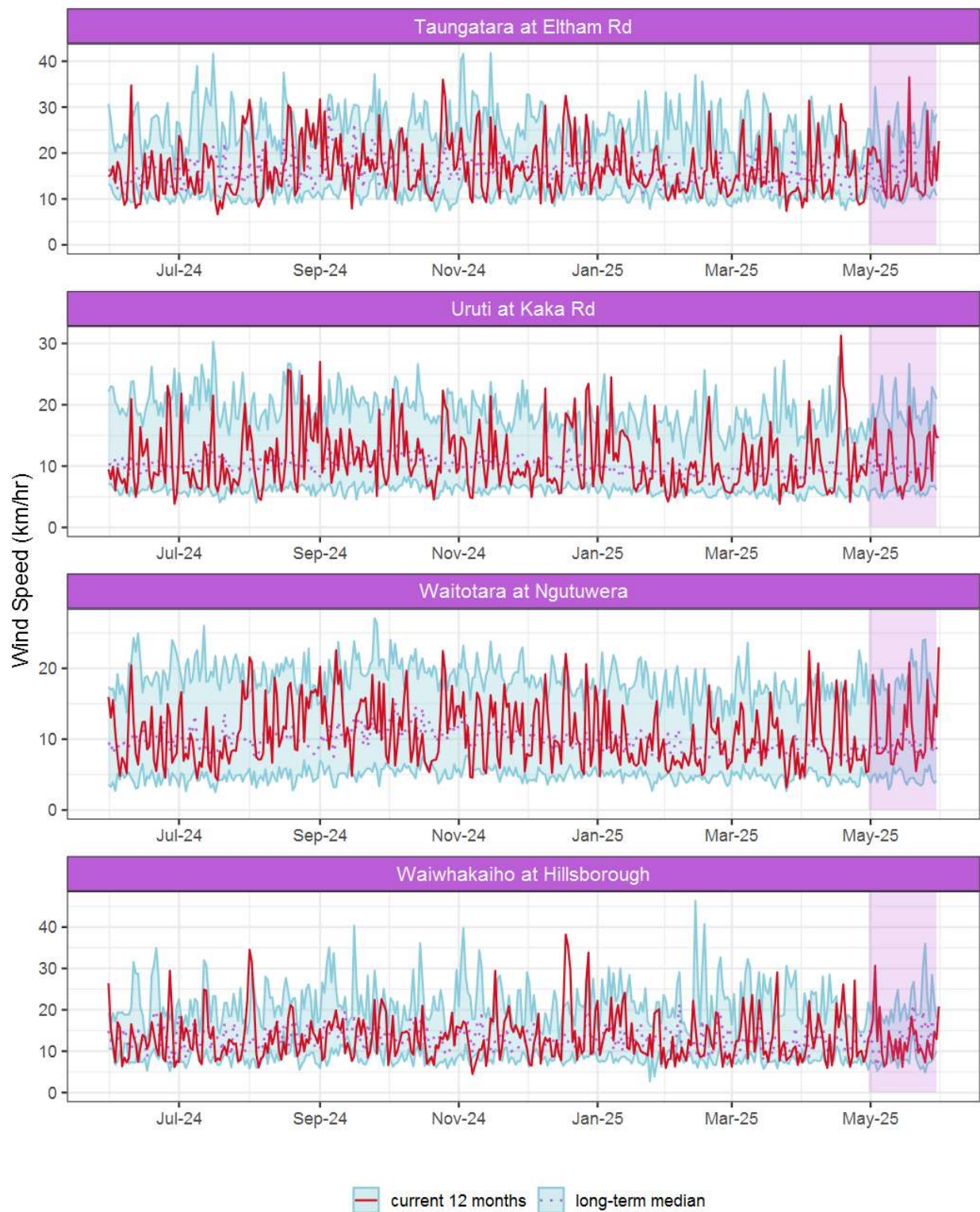


Figure 7.1: Running average wind speed (km/hr) for selected sites, set in context of the historic record.

7.3 Monthly Bar Charts

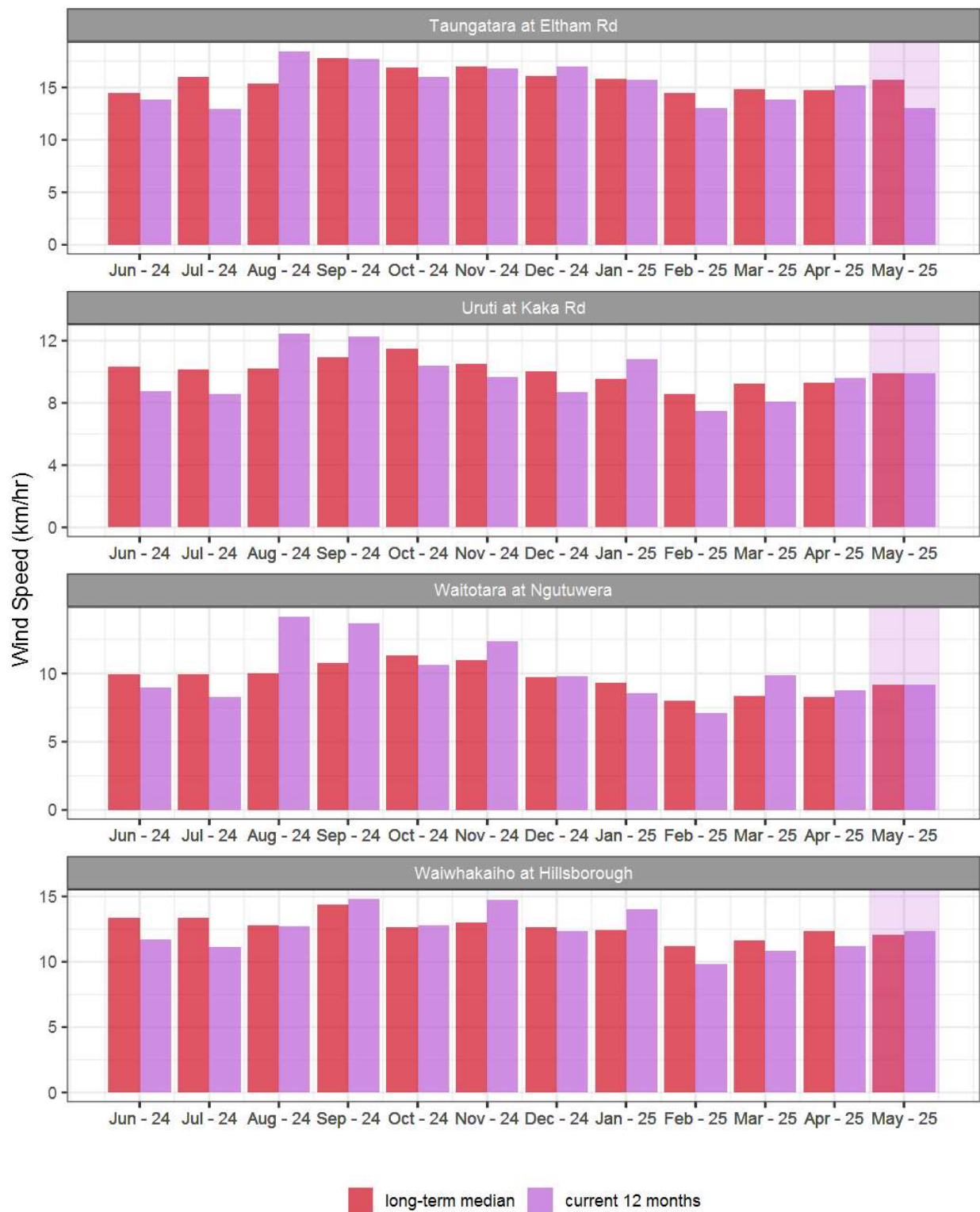


Figure 7.2: Monthly mean wind speed (km/hr) for selected sites, relative to the mean of all previously recorded months.

7.4 Wind roses for May 2025

Average windspeed

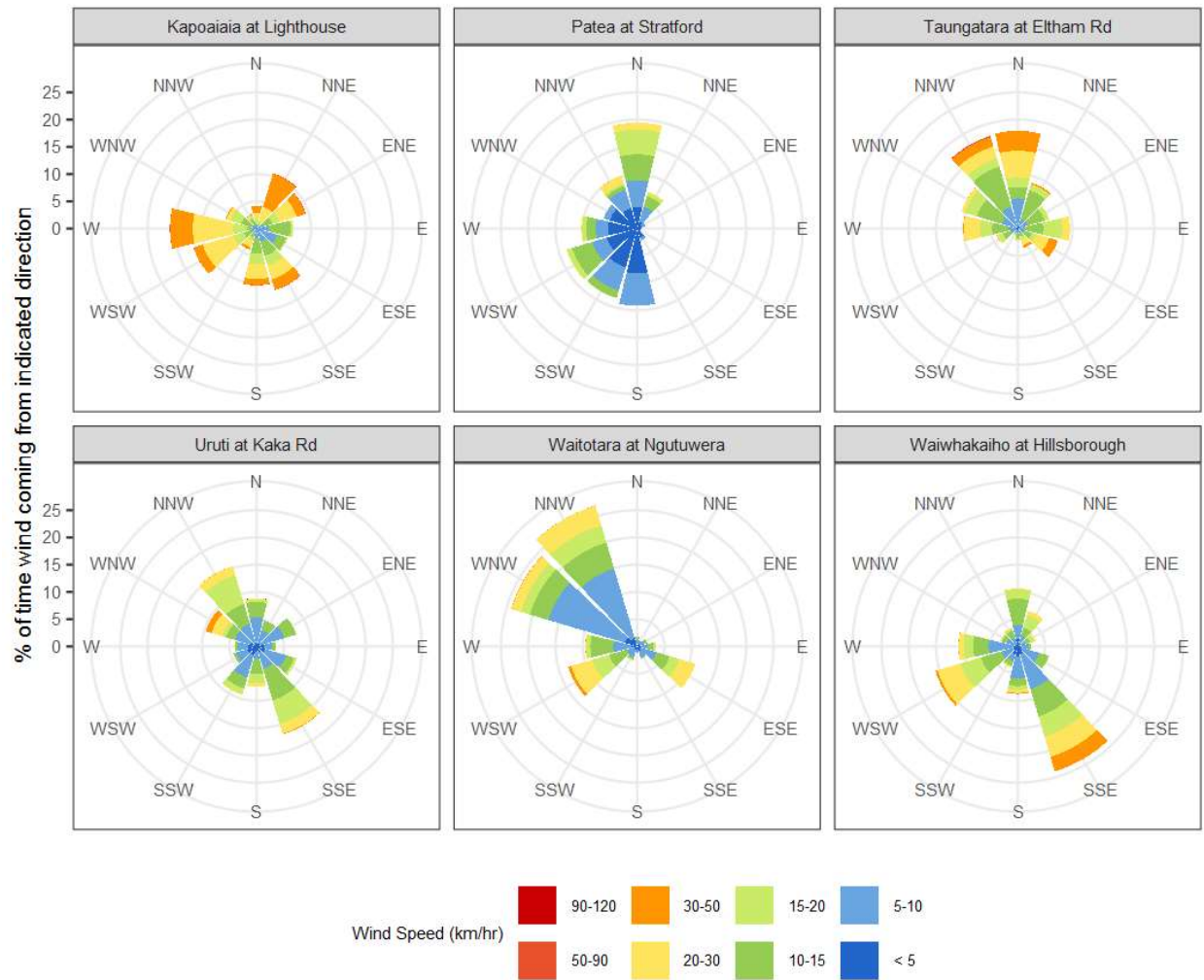


Figure 7.3: Wind roses for May for average wind speed (km/hr).

Maximum gust strength

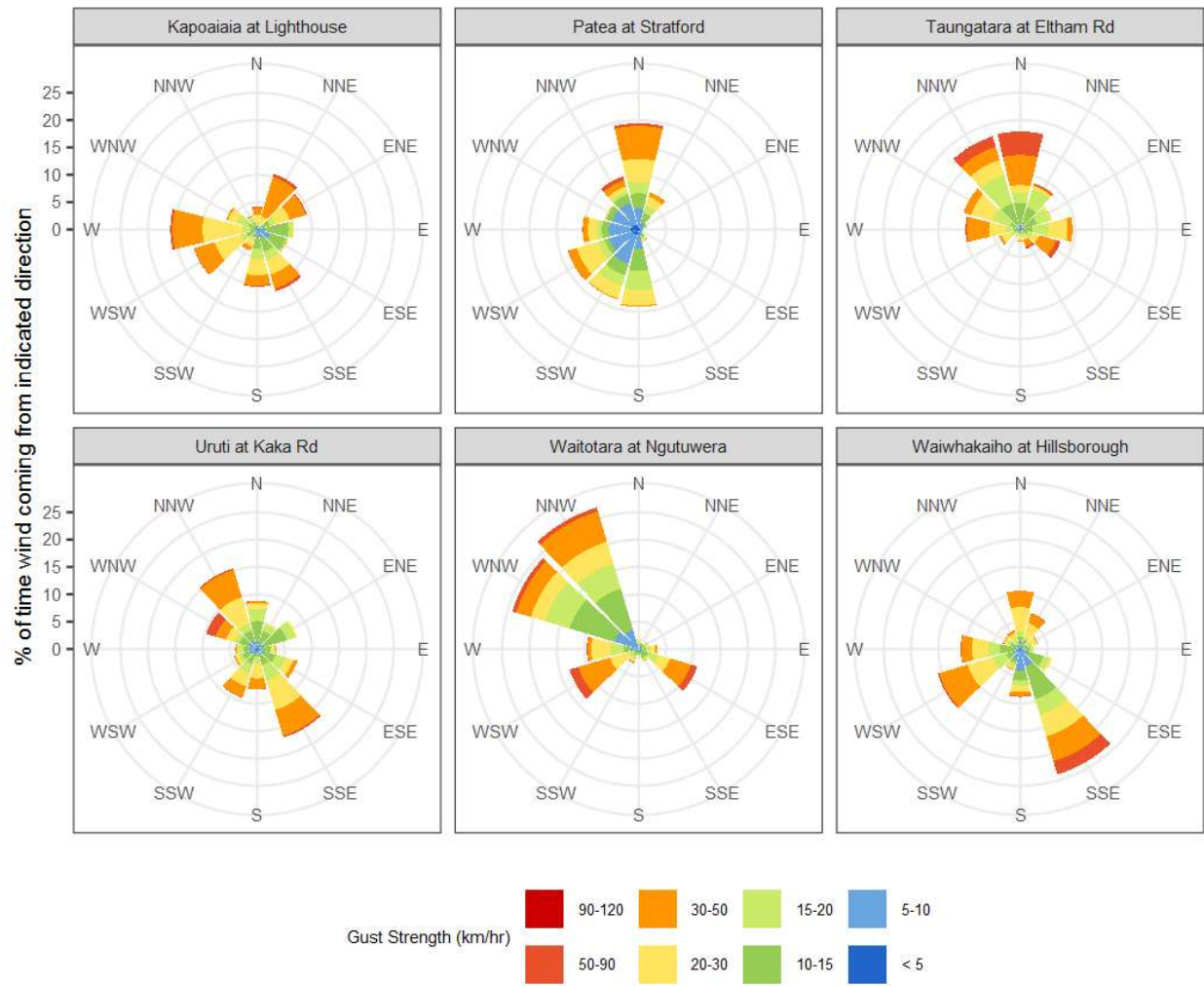


Figure 7.4: Wind roses for May for maximum wind gust (km/hr).

Summary of month's conditions

Rainfall

On average May rainfall was 149.4mm, 18% less than usual, ranging from 57% less rain at Waitotara at Rimunui Station and 15% more at Patea at Stratford.

Year-to-date rainfall is lowest at Waitotara at Hawken Rd with 46% less rainfall than normal, Patea at Stratford has had the highest year to date rainfall with 1% less than normal. Year-to-date rainfall has been 24% less than normal on average across all rain gauges. Compared to typical full year totals, on average sites have already received 27% of a typical year's rainfall, with the highest value at Patea at Stratford, 36% of normal, whereas Waitotara at Rimunui Station sits at 21% of the typical year's total.

Our gauges on Taranaki Maunga recorded an above average amount of rainfall in May with Dawson Falls at 43% more than normal – and 985mm for the month. The gauge at the North Taranaki Visitors Centre was about 20% more than usual with 811mm of rain.

River Flow

Mean river flows for May were 6.2% lower than typical values, low flows were 56.3% greater and high flows 0.6% lower than typical values. The maximum river flow recorded in May was 462.1m³/sec at Waitara at Bertrand Rd on 18 May.

River Water Temperature

Mean river (non-mountain) water temperatures were 12.3°C, an average of 0.3°C warmer than long-term May values. Nighttime-low water temperatures were on average 1.1°C warmer than historic lows, and day-time high temperatures were on average 0.6°C cooler than historic highs. The maximum river water temperature recorded in May was 17.3°C at Mangaone at Stub Rd on 1 May.

Air Temperature

The average air temperature for the region (excluding Te Maunga sites) was 12.7°C, which is 0.4°C warmer than long-term May averages. Low air temperatures for May were on average 0.7°C warmer than the May average for previous years. Day-time high temperatures were on average 0.5°C cooler than historic highs. The maximum air temperature recorded in May was 21.7°C at Waitotara at Hawken Rd, on 14 May.

Soil Moisture

The average soil moisture for May across sites in Taranaki region was 31%. Soil moistures were on average 1.9% drier than typical May values. On average, low soil moistures were 5.3% wetter than previous lows, and the highs were on average 4.1% drier than previous values for May.

Soil Temperature

May soil temperatures were generally 0.4°C warmer than long-term averages. Average nighttime low soil temperatures were 1.8°C warmer than recorded lows, and upper daytime soil temperatures were on average 0.2°C cooler than long-term May highs. The maximum soil temperature recorded in May was 17.8°C at Motunui at Weston, on 1 May.

Wind Speed (average and 10 minute gust)

May average wind speeds were 12.6km/hr, with average gust strength of 41.7km/hr, these were 0.2km/hr lighter, and 0.7km/hr gustier than the long-term average. Average calm weather wind speeds were 0.7km/hr stronger than recorded lows, and windy conditions were on average 0.7km/hr lighter than long-term May highs. The maximum wind gust recorded in May was 91.9km/hr at Taungatara at Eltham Rd on 18 May.

Report date: 13 June 2025.

Supply of environmental data - General terms and conditions

The enclosed information is the highest quality data the Taranaki Regional Council (the Council) is currently able to provide. Some or all of the data being provided may not yet have been audited however, and is therefore subject to change.

As we endeavour to continuously improve our products, we also reserve the right to further amend data where necessary and without notice at any time. As a result, the information supplied to you now may not be the same as that subsequently produced for you or any other requestor.

While the Council has exercised all reasonable skill and care in controlling the contents of the information, you should independently check the information provided if the accuracy of that information is important to you.

Under no circumstances will the Council, its employees or agents be liable in contract, tort or otherwise to compensate you for any loss, injury or damage (including loss of profits or consequential loss) arising directly or indirectly from the supply by the Council or its agents of inadequate, inaccurate or incorrect environmental data.

Any use of the material supplied, for example, by inclusion in a report or a media release, should be accompanied by an acknowledgment of the source of the data. We also request that any outputs generated through the use of the information provided be provided to the Council.