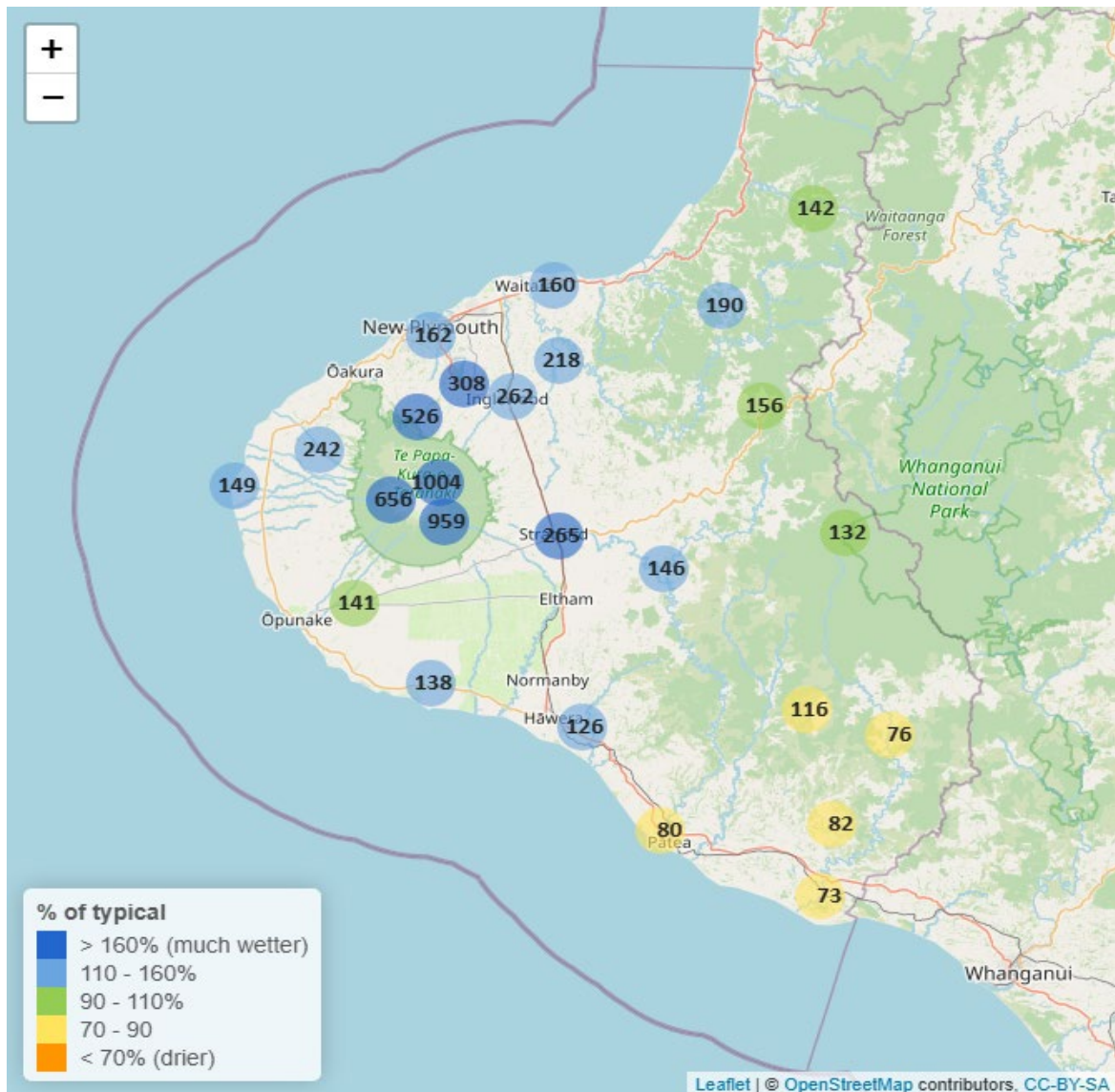


# Taranaki Regional Council Monthly Rainfall and Environmental Data Report for April 2025

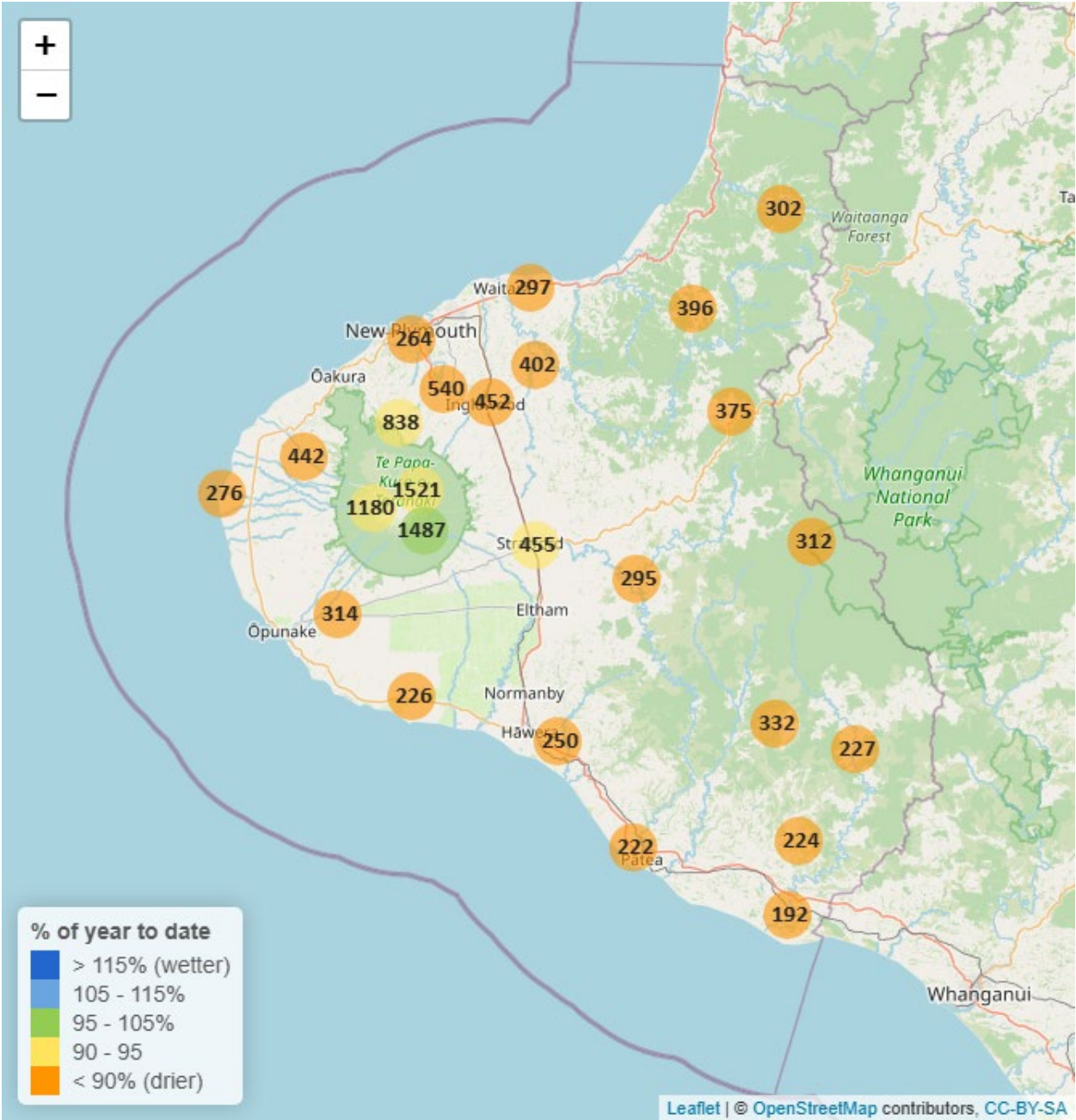
Note: The data presented here are provisional data only and may change as a result of quality control at a later date.

## 1. Rainfall

Map 1: April total rainfall (mm) and percentage of long-term mean (colour key).



Map 1a. Total rainfall 1 January to end April (mm) and percentage of long-term mean (colour key).



**Table 1: Rainfall April and year-to-date totals for rain gauge sites in Taranaki.**

|                                 | April            |                 |                    | Year to Date       |                           |                        |               |
|---------------------------------|------------------|-----------------|--------------------|--------------------|---------------------------|------------------------|---------------|
| Rain gauge                      | # days with rain | Total rain (mm) | % of typical month | Total to date (mm) | % of typical year to date | % of typical full year | Records Began |
| North Egmont at Visitors Centre | 20               | 1004.5          | 204.3              | 1521.0             | 92.3                      | 22.3                   | 1996          |
| Dawson Falls                    | 18               | 959.0           | 197.7              | 1487.0             | 98.8                      | 23.4                   | 1999          |
| Kapoaiaia at Kahui Hut          | 15               | 656.5           | 160.5              | 1179.5             | 92.1                      | 22.6                   | 2006          |
| Mangorei Upper at Forest Hill   | 16               | 526.5           | 206.9              | 837.5              | 94.5                      | 23.1                   | 2018          |
| Waiwhakaiho at Hillsborough     | 13               | 187.5           | 110.8              | 311.0              | 61.6                      | 17.2                   | 2013          |
| Brooklands Zoo at New Plymouth  | 15               | 162.0           | 112.3              | 264.4              | 59.5                      | 16.7                   | 2012          |
| Motunui M39 at Weston W3        | 13               | 159.8           | 119.3              | 297.0              | 70.5                      | 18.9                   | 1999          |
| Waiwhakaiho at Egmont Village   | 15               | 308.0           | 174.5              | 540.5              | 88.6                      | 22.6                   | 1996          |
| Manganui at Everett Park        | 16               | 217.6           | 135.2              | 402.0              | 75.0                      | 19.3                   | 1996          |
| Inglewood at Oxidation Ponds    | 15               | 261.5           | 150.4              | 451.5              | 75.9                      | 19.3                   | 2000          |
| Stony at Mangatete Bridge       | 14               | 241.5           | 147.6              | 442.5              | 82.5                      | 22.3                   | 2004          |
| Kapoaiaia at Lighthouse         | 7                | 148.8           | 131.6              | 275.6              | 75.6                      | 20.6                   | 1999          |
| Taungatara at Eltham Rd         | 12               | 141.0           | 108.2              | 313.5              | 78.1                      | 20.0                   | 2005          |
| Kaupokonui at Glenn Rd          | 12               | 138.5           | 141.5              | 226.5              | 73.6                      | 19.6                   | 1998          |
| Patea at Stratford              | 14               | 265.0           | 180.1              | 455.0              | 92.1                      | 23.0                   | 1999          |
| Mangaehu at Bridge              | 12               | 146.5           | 116.2              | 295.0              | 69.8                      | 18.6                   | 1999          |
| Kotare at OSullivans            | 13               | 142.5           | 96.2               | 302.0              | 56.7                      | 14.1                   | 1998          |
| Uruti at Kaka Rd                | 12               | 190.0           | 114.7              | 395.5              | 70.4                      | 17.9                   | 1996          |
| Pohokura Saddle                 | 12               | 155.5           | 104.1              | 375.0              | 74.9                      | 18.9                   | 1996          |
| Omaru at Charlies               | 15               | 131.5           | 90.5               | 311.5              | 66.6                      | 17.1                   | 2006          |
| Omahine at Moana Trig           | 12               | 115.5           | 83.2               | 332.5              | 74.5                      | 19.9                   | 2007          |

|                              | April            |                 |                    | Year to Date       |                           |                        |               |
|------------------------------|------------------|-----------------|--------------------|--------------------|---------------------------|------------------------|---------------|
| Rain gauge                   | # days with rain | Total rain (mm) | % of typical month | Total to date (mm) | % of typical year to date | % of typical full year | Records Began |
| Waitotara at Rimunui Station | 8                | 76.5            | 70.8               | 227.0              | 64.7                      | 16.6                   | 1996          |
| Waitotara at Ngutuwera       | 9                | 82.5            | 82.8               | 224.5              | 65.8                      | 17.6                   | 1999          |
| Tawhiti at Duffys            | 12               | 125.5           | 129.4              | 249.5              | 83.6                      | 22.6                   | 1996          |
| Patea at Bore 3              | 8                | 79.8            | 74.9               | 222.0              | 69.2                      | 19.0                   | 2006          |
| Waitotara at Hawken Rd       | 8                | 73.2            | 75.3               | 192.2              | 55.2                      | 16.7                   | 2016          |

Notes: Low and high values in tables refer to the upper and lower 5th percentiles of the historic record for each site (except for wind gust and soil moisture which are the upper and lower 1st percentiles). Percentile values give a better indication of the general upper and lower range of the historic data against which to compare the current month. Start year (records began) shows the length of data used to compute historic highs, lows, and "typical values". Sites with a longer data record will generally provide a more reliable comparison to values in the current year.

## 1.2 Long-term data patterns

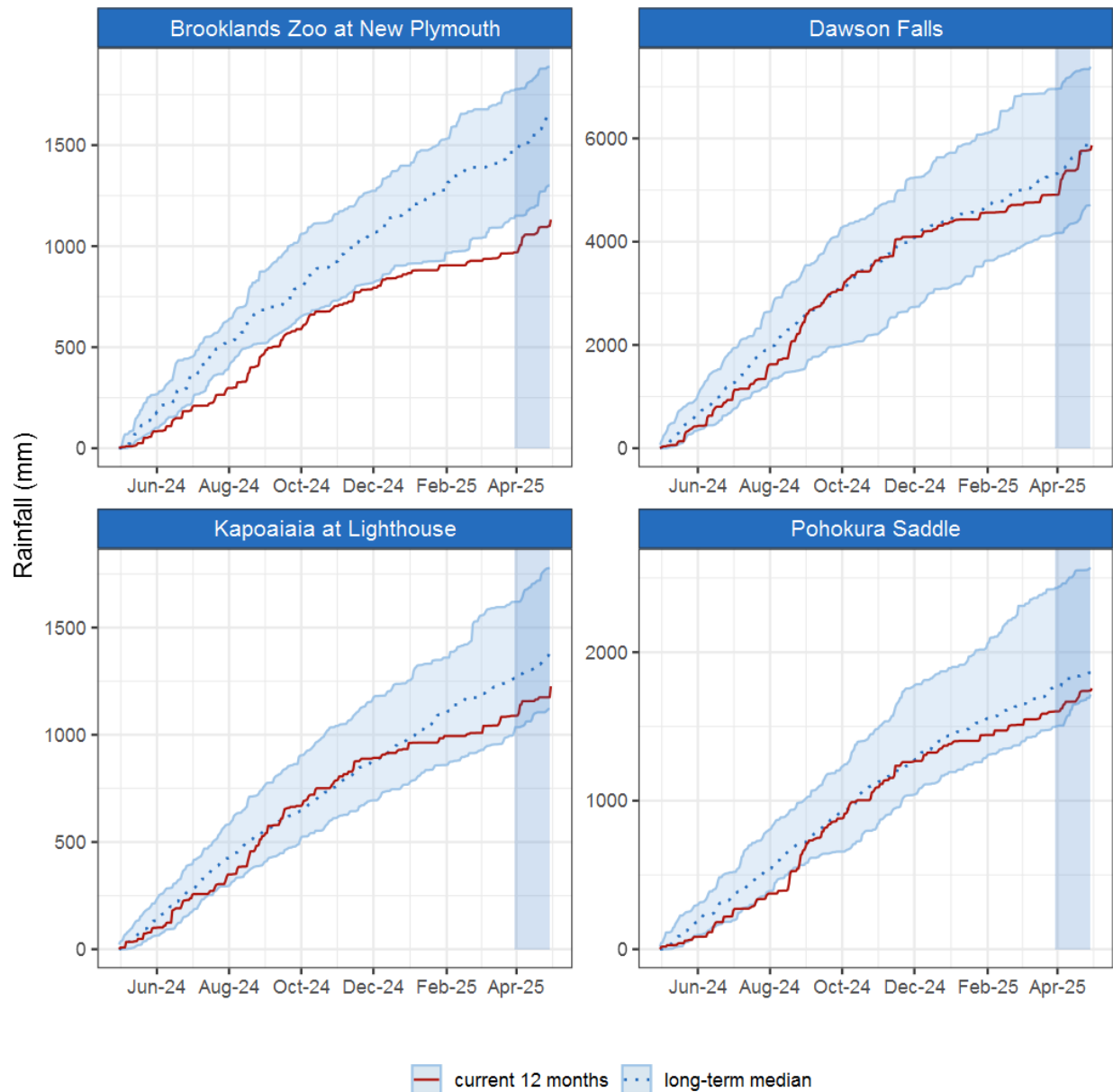


Figure 1.1: This year's and last year's data set in context of historic record at selected rain gauge sites in Taranaki.

### 1.3 Monthly Bar Charts

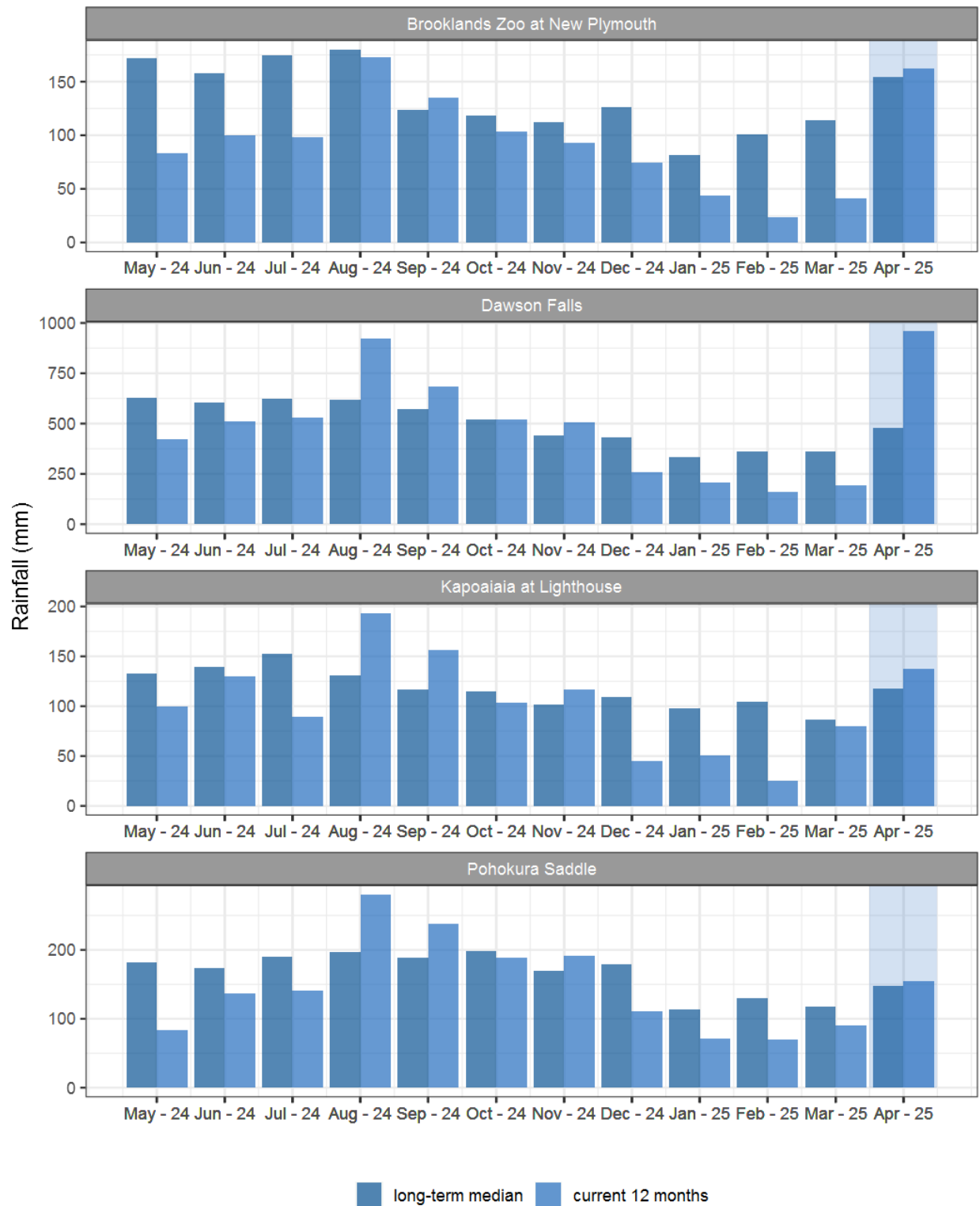
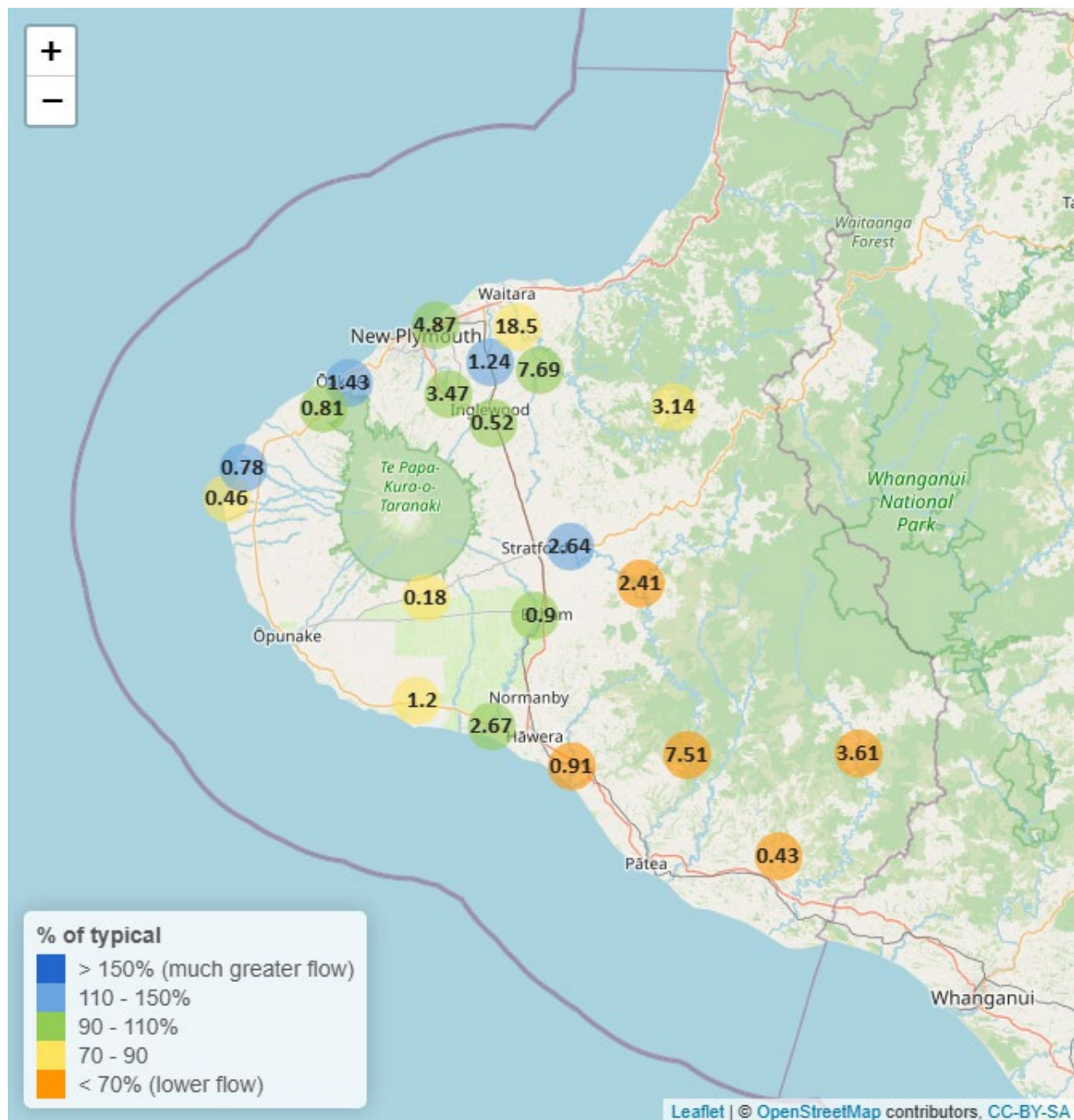


Figure 1.2: Monthly rainfall totals for this month and the mean of all previously recorded months.



## 2. River Flow

Map 2: April mean river flows (m<sup>3</sup>/sec), with difference as percentage of long-term mean.



**Table 2: Summary of high, low and mean flow for April and for April in all preceding years of record.**

| April 2025 - Recorded flows (m3/sec) |               |          |               |          |               |          |               |            |
|--------------------------------------|---------------|----------|---------------|----------|---------------|----------|---------------|------------|
|                                      | Highs         |          | Lows          |          | Mean          |          |               |            |
| River and Site                       | current month | historic | current month | historic | current month | historic | April maximum | Data years |
| Kapoaiaia at Lighthouse              | 2.93          | 2.39     | 0.29          | 0.28     | 0.46          | 0.52     | 16.37         | 39         |
| Kaupokonui at Glenn Rd               | 10.99         | 6.15     | 0.51          | 0.68     | 1.20          | 1.41     | 54.37         | 46         |
| Mangaehu at Bridge                   | 15.44         | 36.33    | 1.85          | 2.16     | 2.41          | 5.12     | 24.63         | 47         |
| Manganui at Everett Park             | 73.28         | 50.08    | 2.89          | 3.53     | 7.69          | 7.24     | 261.74        | 32         |
| Mangawheroiti Above Intake W.W       | 1.04          | 0.93     | 0.12          | 0.13     | 0.18          | 0.23     | 6.76          | 12         |
| Moumahaki at Johnston Rd             | 0.82          | 4.09     | 0.37          | 0.49     | 0.43          | 0.80     | 1.95          | 6          |
| Ngatoro at SH3                       | 6.35          | 3.61     | 0.25          | 0.27     | 0.52          | 0.51     | 32.22         | 35         |
| Oakura at Victoria Rd                | 24.03         | 7.76     | 0.54          | 0.51     | 1.43          | 1.27     | 88.40         | 6          |
| Patea at McColls Bridge              | 36.57         | 64.07    | 3.17          | 2.25     | 7.51          | 10.98    | 50.34         | 35         |
| Patea at Skinner Rd                  | 16.23         | 12.22    | 0.64          | 0.69     | 2.64          | 2.26     | 45.27         | 47         |
| Tangahoe below Railway Bridge        | 3.07          | 12.17    | 0.68          | 1.09     | 0.91          | 1.98     | 8.52          | 7          |
| Timaru at Tataraimaka                | 17.72         | 5.79     | 0.28          | 0.33     | 0.81          | 0.84     | 116.90        | 12         |
| Waingongoro at Eltham Rd             | 9.04          | 5.73     | 0.36          | 0.38     | 0.90          | 0.98     | 31.57         | 50         |
| Waingongoro at SH45                  | 12.37         | 11.92    | 1.09          | 1.19     | 2.67          | 2.92     | 40.39         | 44         |
| Waiongana at SH3a                    | 9.02          | 6.65     | 0.35          | 0.41     | 1.24          | 1.07     | 27.97         | 44         |
| Waitara at Bertrand Rd               | 100.69        | 174.15   | 6.90          | 7.08     | 18.50         | 21.03    | 292.21        | 44         |
| Waitara at Purangi Bridge            | 42.28         | 73.37    | 0.68          | 0.71     | 3.14          | 3.72     | 77.64         | 26         |
| Waitotara at Rimunui Station         | 9.25          | 39.59    | 2.85          | 2.46     | 3.61          | 6.23     | 21.29         | 19         |
| Waiwhakaiho at Egmont Village        | 38.73         | 20.84    | 1.76          | 1.97     | 3.47          | 3.34     | 187.08        | 45         |
| Waiwhakaiho at Vickers Rd            | 62.15         | 25.49    | 1.77          | 1.90     | 4.87          | 4.48     | 309.61        | 5          |
| Warea at Coast                       | 5.35          | 2.53     | 0.38          | 0.34     | 0.78          | 0.60     | 21.21         | 8          |



## 2.2 Long-term data patterns

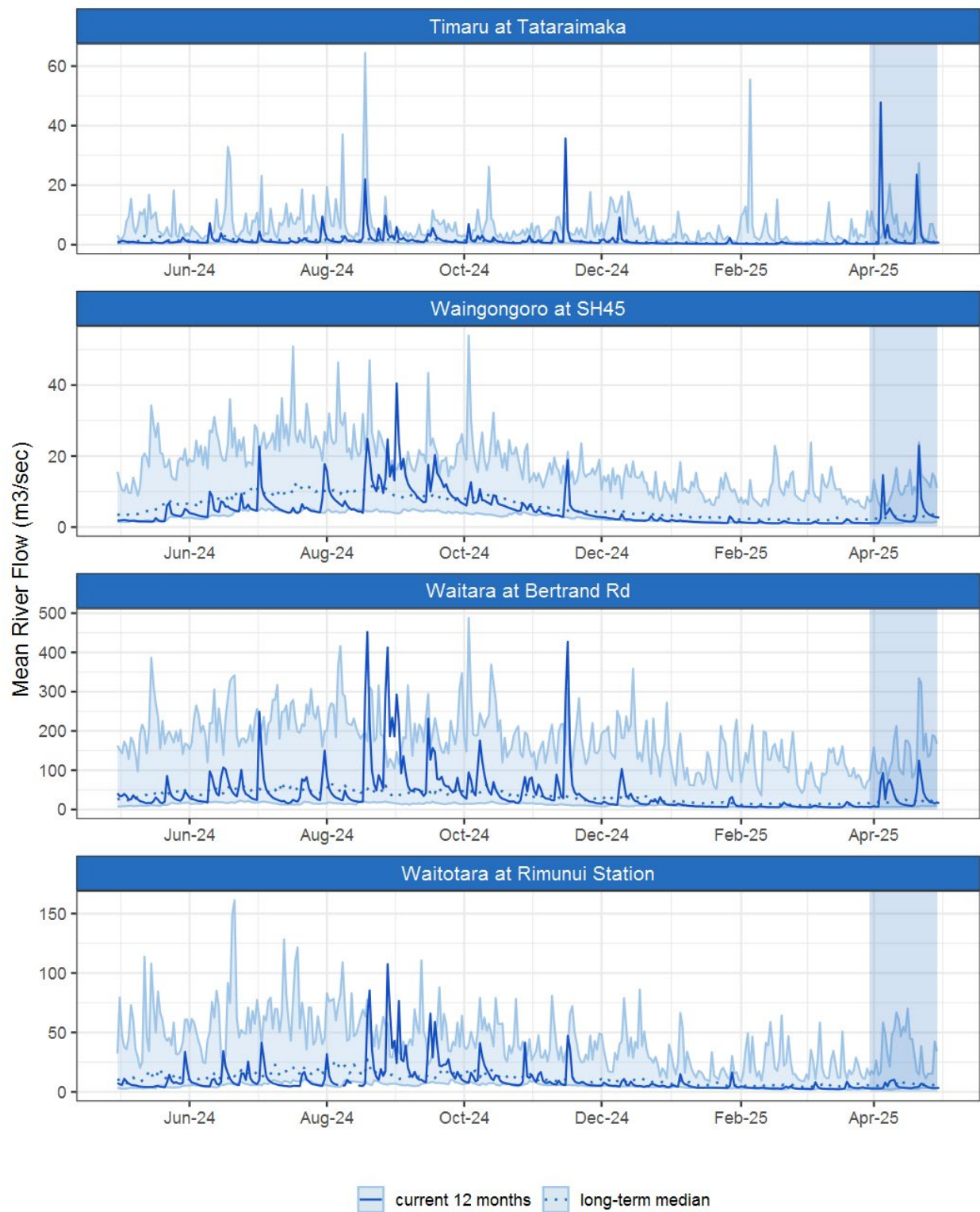


Figure 2.1: Running average river flows for selected sites, set in context of the historic record.

## 2.3 Monthly Bar Charts

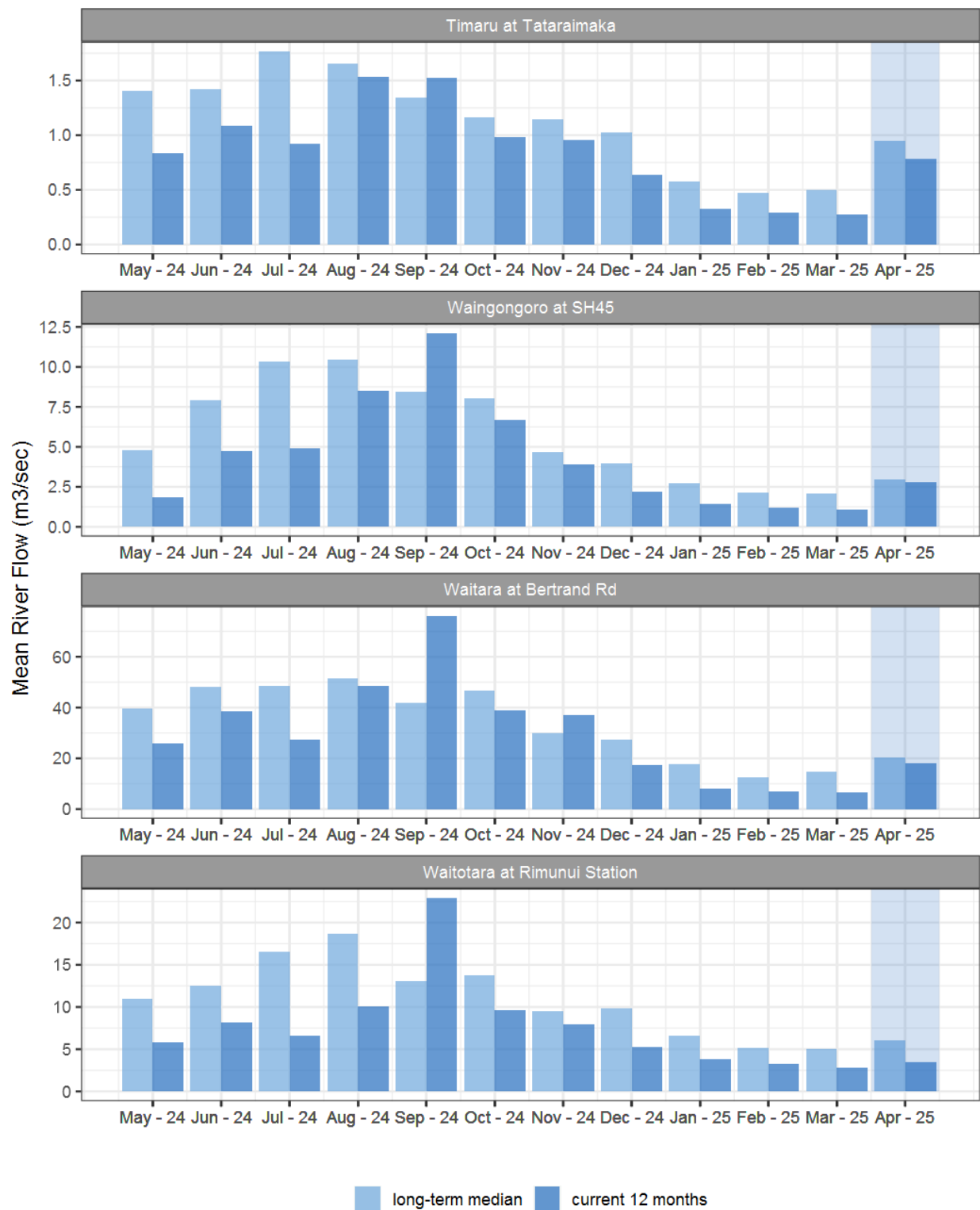
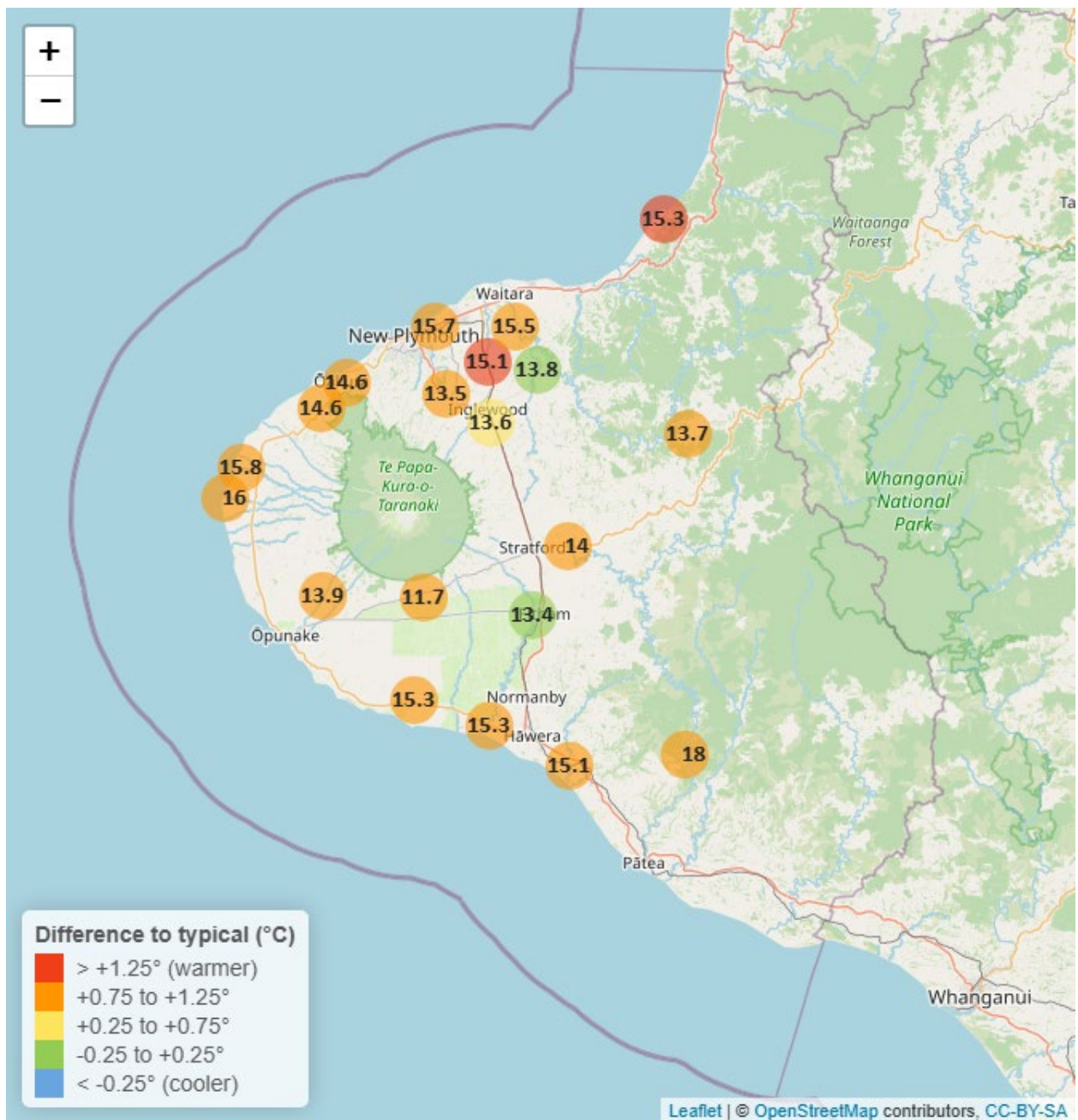


Figure 2.2: Monthly mean river flow for this month and the mean of all previously recorded months.

### 3. River Temperature

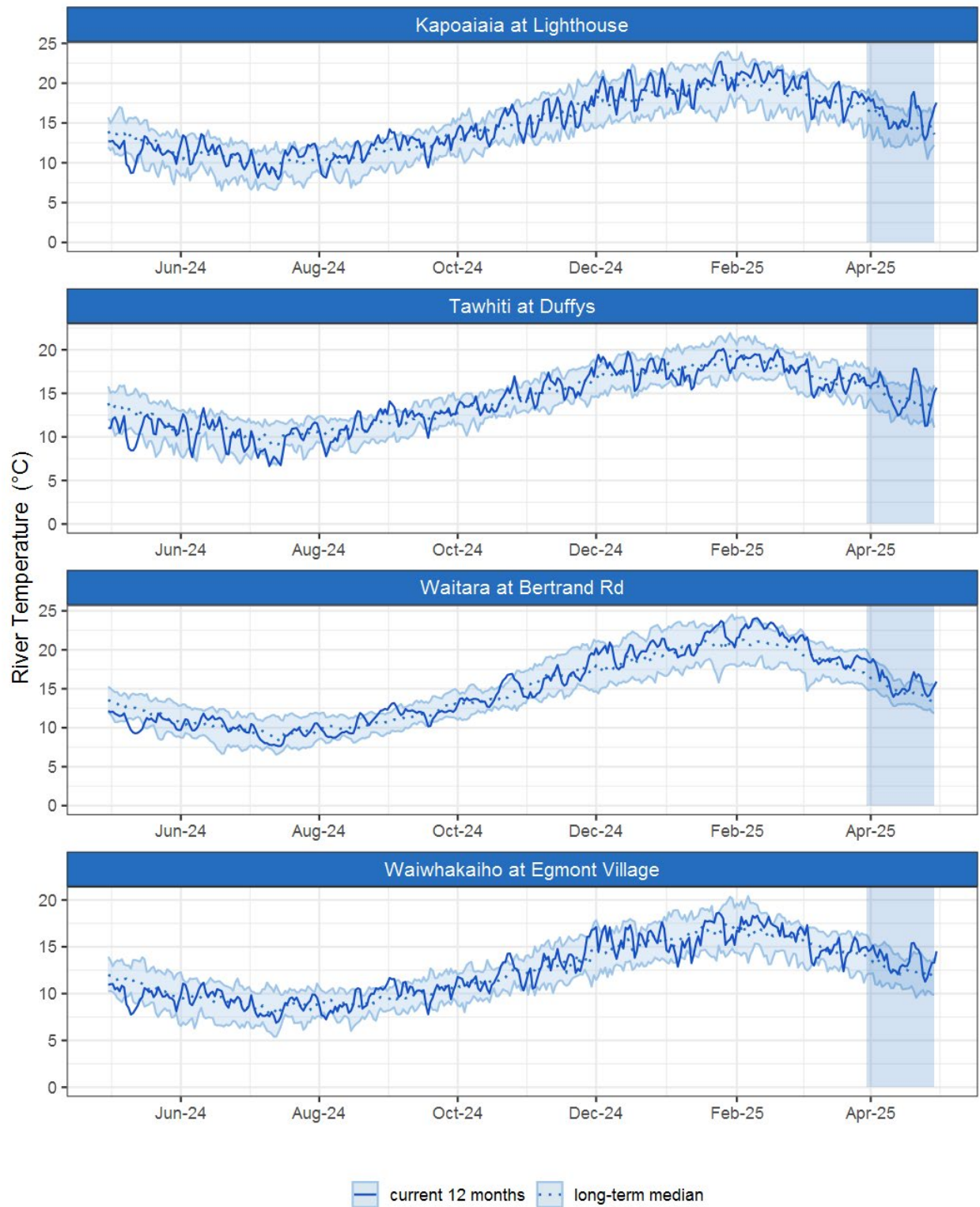
Map 3: April mean water temperature with difference to long-term mean (°C).



**Table 3: Summary of high, low and mean river temperature for April and for April in all preceding years of record.**

| April 2025 - River Temperature (°C) |               |          |               |          |               |          |               |            |
|-------------------------------------|---------------|----------|---------------|----------|---------------|----------|---------------|------------|
|                                     | Highs         |          | Lows          |          | Mean          |          |               |            |
| River and Site                      | current month | historic | current month | historic | current month | historic | April maximum | Data years |
| Kapoaiaia at Lighthouse             | 18.57         | 18.00    | 13.16         | 11.71    | 15.96         | 14.96    | 20.27         | 25         |
| Kaupokonui at Glenn Rd              | 17.96         | 17.72    | 11.77         | 11.30    | 15.27         | 14.44    | 20.54         | 32         |
| Manganui at Everett Park            | 16.13         | 16.27    | 11.34         | 11.29    | 13.85         | 13.74    | 16.66         | 16         |
| Mangaone 3 at Stub Rd               | 17.86         | 17.06    | 13.33         | 12.89    | 15.71         | 14.83    | 18.98         | 5          |
| Mangawheroiti Above Intake W.W      | 14.17         | 12.93    | 9.72          | 9.02     | 11.72         | 10.97    | 15.23         | 12         |
| Matau at Woolshed                   | 15.88         | 15.46    | 10.71         | 10.29    | 13.72         | 12.94    | 17.38         | 7          |
| Ngatoro at SH3                      | 15.67         | 15.34    | 11.23         | 10.23    | 13.56         | 12.83    | 16.65         | 23         |
| Oakura at Victoria Rd               | 17.15         | 16.35    | 12.48         | 11.61    | 14.63         | 13.78    | 18.44         | 6          |
| Patea at McColls Bridge             | 19.77         | 19.16    | 16.44         | 14.93    | 18.00         | 16.79    | 20.63         | 9          |
| Patea at Skinner Rd                 | 16.23         | 15.59    | 11.43         | 10.33    | 14.00         | 13.04    | 16.95         | 21         |
| Tangahoe below Railway Bridge       | 17.85         | 16.65    | 11.85         | 11.56    | 15.12         | 14.03    | 18.94         | 7          |
| Timaru at Tataraimaka               | 16.93         | 16.18    | 12.46         | 11.32    | 14.62         | 13.72    | 18.22         | 11         |
| Waiaua 2 at Barraclough Opua        | 17.10         | 16.20    | 10.32         | 9.83     | 13.88         | 12.81    | 19.32         | 6          |
| Waikaramarama at Bridge             | 16.97         | 16.18    | 12.44         | 11.82    | 15.32         | 14.04    | 17.42         | 7          |
| Waingongoro at Eltham Rd            | 16.09         | 15.72    | 10.79         | 10.65    | 13.39         | 13.20    | 16.96         | 20         |
| Waingongoro at SH45                 | 17.98         | 17.20    | 12.24         | 11.59    | 15.26         | 14.40    | 18.74         | 21         |
| Waiongana at SH3a                   | 17.09         | 16.25    | 12.62         | 11.28    | 15.14         | 13.77    | 18.13         | 14         |
| Waitara at Bertrand Rd              | 18.27         | 17.40    | 13.76         | 12.40    | 15.46         | 14.69    | 19.64         | 36         |
| Waiwhakaiho at Egmont Village       | 15.41         | 15.03    | 11.27         | 9.81     | 13.49         | 12.56    | 16.40         | 32         |
| Warea at Coast                      | 18.59         | 18.04    | 12.79         | 12.13    | 15.77         | 14.92    | 20.18         | 5          |

### 3.2 Long-term data patterns



*Figure 3.1: Running average river temperature for selected sites, set in context of the historic record.*

### 3.3 Monthly Bar Charts

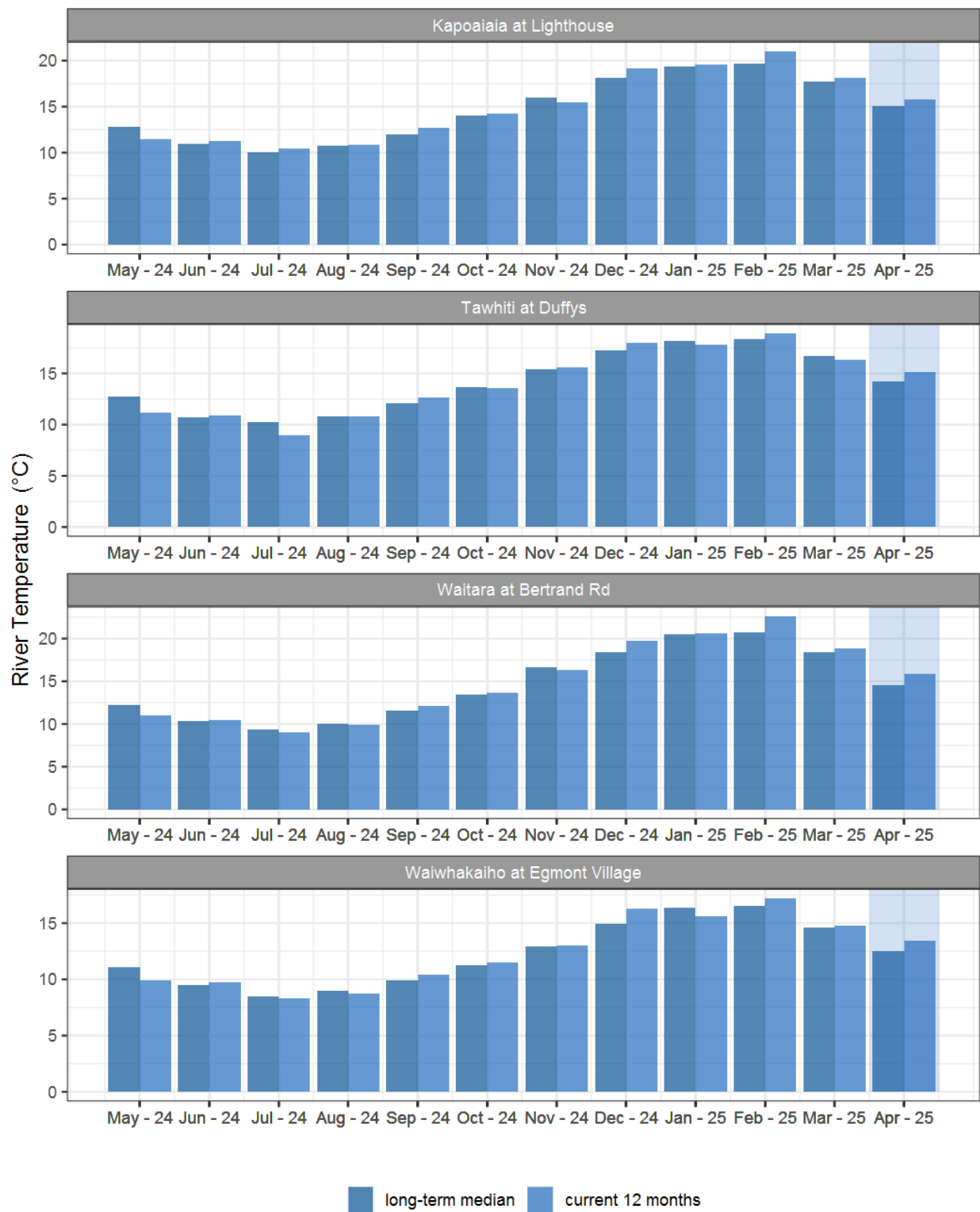
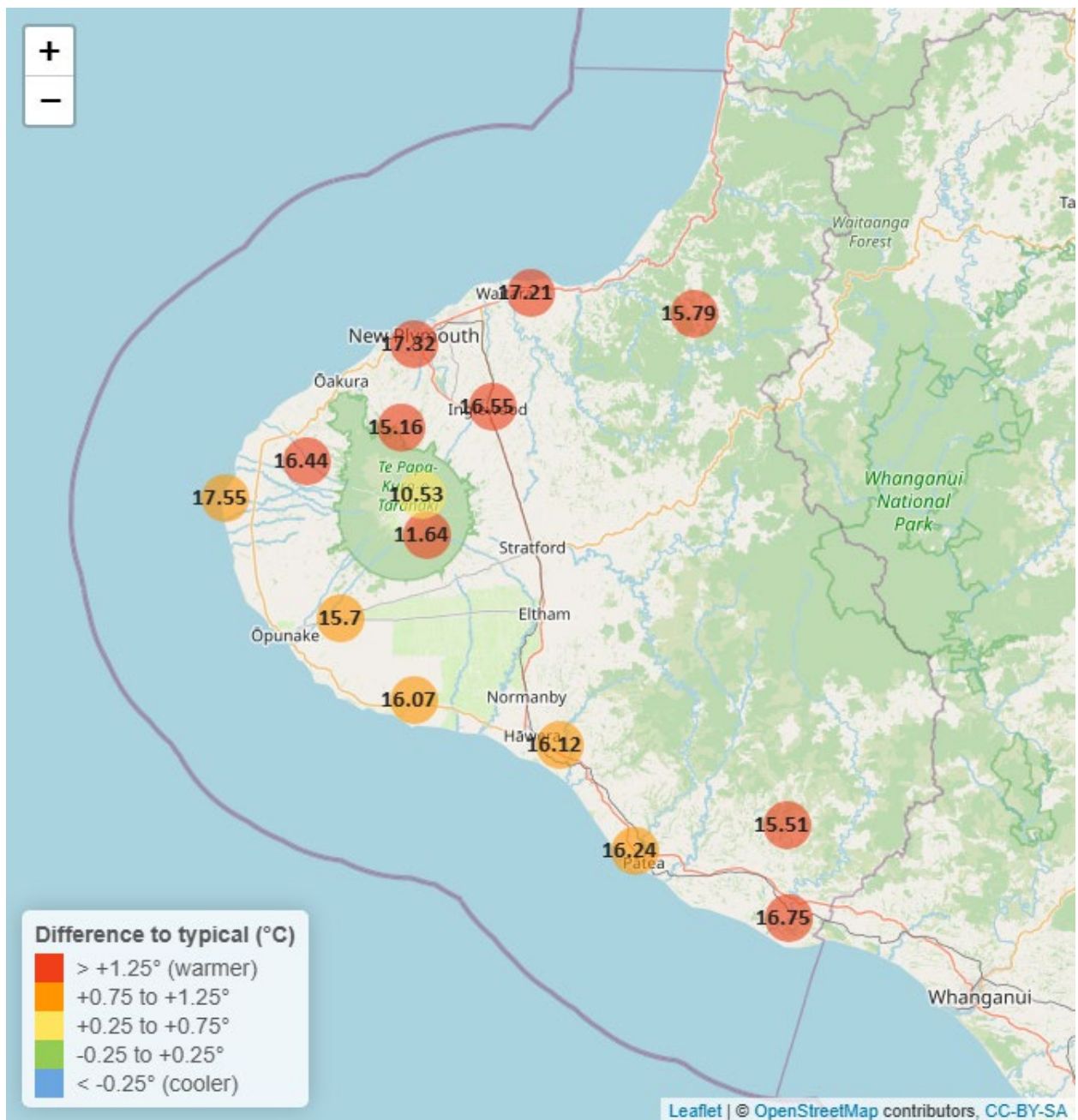


Figure 3.2: Monthly mean river temperature for this month and the mean of all previously recorded months.



## 4. Air Temperature

Map 4: April mean air temperature with difference to long-term mean (°C).





**Table 4: Summary of high, low and mean air temperature for April and for April in all preceding years of record.**

| April 2025 - Air Temperature (°C) |               |          |               |          |               |          |               |            |
|-----------------------------------|---------------|----------|---------------|----------|---------------|----------|---------------|------------|
|                                   | Highs         |          | Lows          |          | Mean          |          |               |            |
| Site                              | current month | historic | current month | historic | current month | historic | April maximum | Data years |
| Brooklands Zoo at New Plymouth    | 22.05         | 21.33    | 10.21         | 9.50     | 17.32         | 15.66    | 24.90         | 13         |
| Dawson Falls                      | 15.15         | 14.47    | 6.24          | 5.12     | 11.64         | 9.86     | 19.04         | 9          |
| Inglewood at Oxidation Ponds      | 21.43         | 19.69    | 9.15          | 6.93     | 16.55         | 14.10    | 25.10         | 13         |
| Kapoaiaia at Lighthouse           | 20.77         | 19.74    | 11.49         | 10.60    | 17.55         | 16.49    | 24.19         | 13         |
| Kaupokonui at Glenn Rd            | 20.53         | 20.05    | 8.70          | 8.11     | 16.07         | 15.27    | 25.00         | 10         |
| Mangorei Upper at Forest Hill     | 18.13         | 17.19    | 9.91          | 8.52     | 15.16         | 13.27    | 20.40         | 8          |
| Motunui M39 at Weston W3          | 20.65         | 19.72    | 10.18         | 8.96     | 17.21         | 15.19    | 22.73         | 7          |
| North Egmont at Visitors Centre   | 14.32         | 14.75    | 4.88          | 4.94     | 10.53         | 9.85     | 16.73         | 10         |
| Patea at Bore 3                   | 21.33         | 19.94    | 10.21         | 9.19     | 16.24         | 15.45    | 23.71         | 12         |
| Stony at Mangatete Bridge         | 20.24         | 19.60    | 10.30         | 9.59     | 16.44         | 14.86    | 22.83         | 9          |
| Taungatara at Eltham Rd           | 20.26         | 19.15    | 9.20          | 8.65     | 15.70         | 14.58    | 23.48         | 10         |
| Tawhiti at Duffys                 | 21.21         | 20.04    | 5.47          | 5.07     | 16.12         | 15.06    | 22.88         | 12         |
| Uruti at Kaka Rd                  | 19.51         | 18.28    | 9.73          | 8.59     | 15.79         | 13.52    | 23.26         | 7          |
| Waitotara at Hawken Rd            | 21.95         | 20.28    | 9.27          | 8.40     | 16.75         | 15.00    | 24.73         | 8          |
| Weraweraonga at Mangawhio Rd      | 21.93         | 20.50    | 5.77          | 6.11     | 15.51         | 13.94    | 24.68         | 8          |

## 4.2 Long-term data patterns

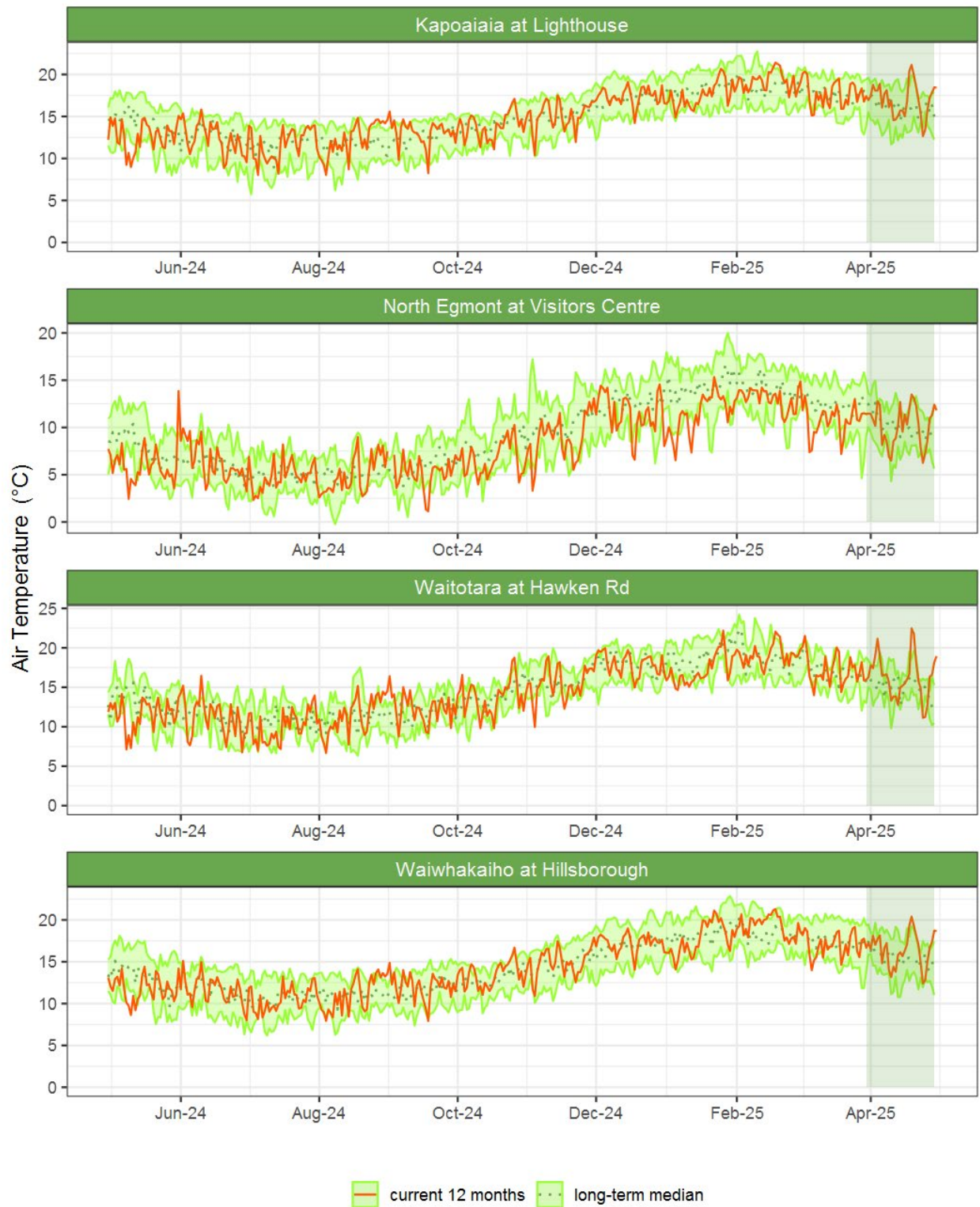


Figure 4.1: Running average air temperature for selected sites, set in context of the historic record.

### 4.3 Monthly Bar Charts

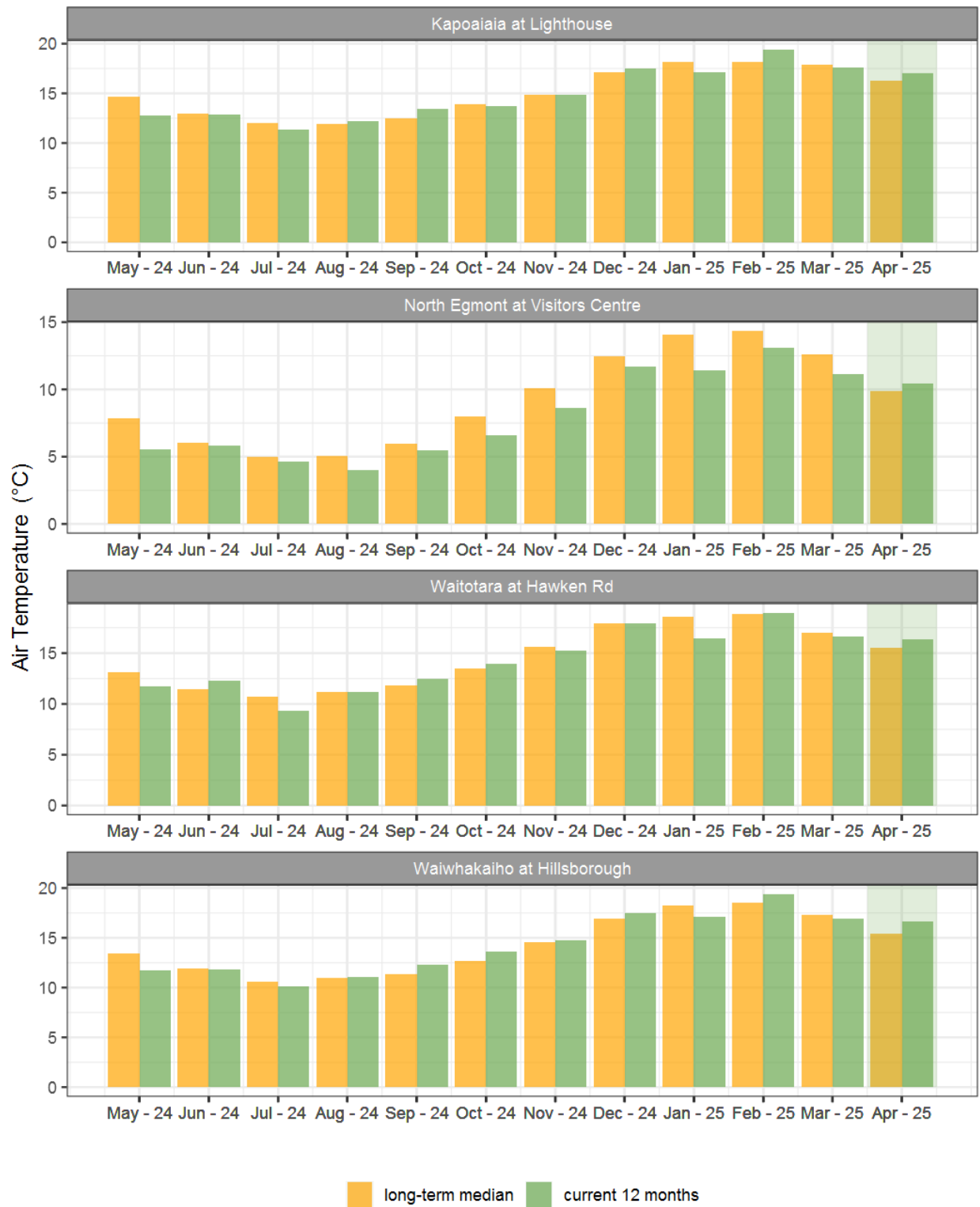
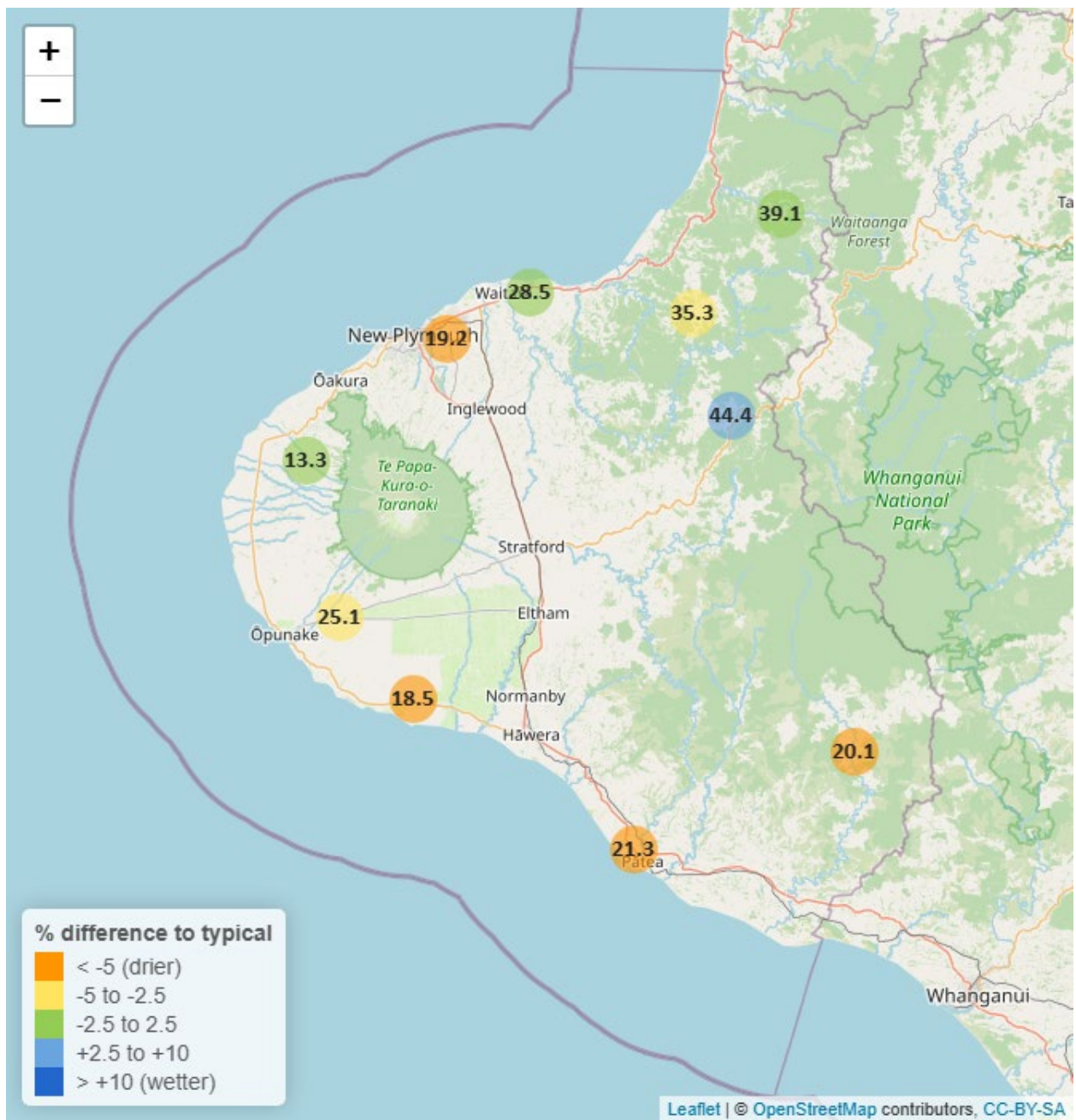


Figure 4.2: Monthly mean air temperature for April and the mean of all previously recorded months.

## 5. Soil Moisture

Map 5: April mean soil moisture content (%).



**Table 5: Summary of high, low and mean soil moisture for April and for April in all preceding years of record.**

| April 2025 - Soil Moisture (%) |               |          |               |          |               |          |               |            |
|--------------------------------|---------------|----------|---------------|----------|---------------|----------|---------------|------------|
|                                | Highs         |          | Lows          |          | Mean          |          |               |            |
| Site                           | current month | historic | current month | historic | current month | historic | April maximum | Data years |
| Kaupokonui at Glenn Rd         | 26.67         | 35.88    | 12.95         | 11.21    | 18.52         | 29.81    | 29.87         | 14         |
| Kotare at OSullivans           | 43.35         | 47.00    | 29.74         | 23.99    | 39.15         | 36.79    | 47.93         | 13         |
| Motunui M39 at Weston W3       | 29.82         | 30.34    | 21.18         | 14.11    | 28.54         | 27.51    | 30.11         | 10         |
| Patea at Bore 3                | 22.04         | 30.41    | 20.79         | 19.56    | 21.28         | 26.36    | 22.28         | 8          |
| Pohokura Saddle                | 50.44         | 50.68    | 32.89         | 28.06    | 44.38         | 41.04    | 54.43         | 10         |
| Stony at Mangatete Bridge      | 15.40         | 22.64    | 9.81          | 6.81     | 13.29         | 15.27    | 17.61         | 9          |
| Taungatara at Eltham Rd        | 27.69         | 40.14    | 20.34         | 15.54    | 25.13         | 28.65    | 32.19         | 12         |
| Uruti at Kaka Rd               | 38.04         | 43.24    | 25.32         | 27.40    | 35.29         | 38.41    | 39.87         | 13         |
| Waitotara at Rimunui Station   | 20.83         | 29.84    | 16.80         | 21.50    | 20.14         | 25.84    | 21.05         | 8          |
| Waiwhakaiho at Hillsborough    | 20.65         | 28.60    | 14.01         | 17.45    | 19.20         | 25.68    | 22.14         | 13         |

## 5.2 Long-term data patterns

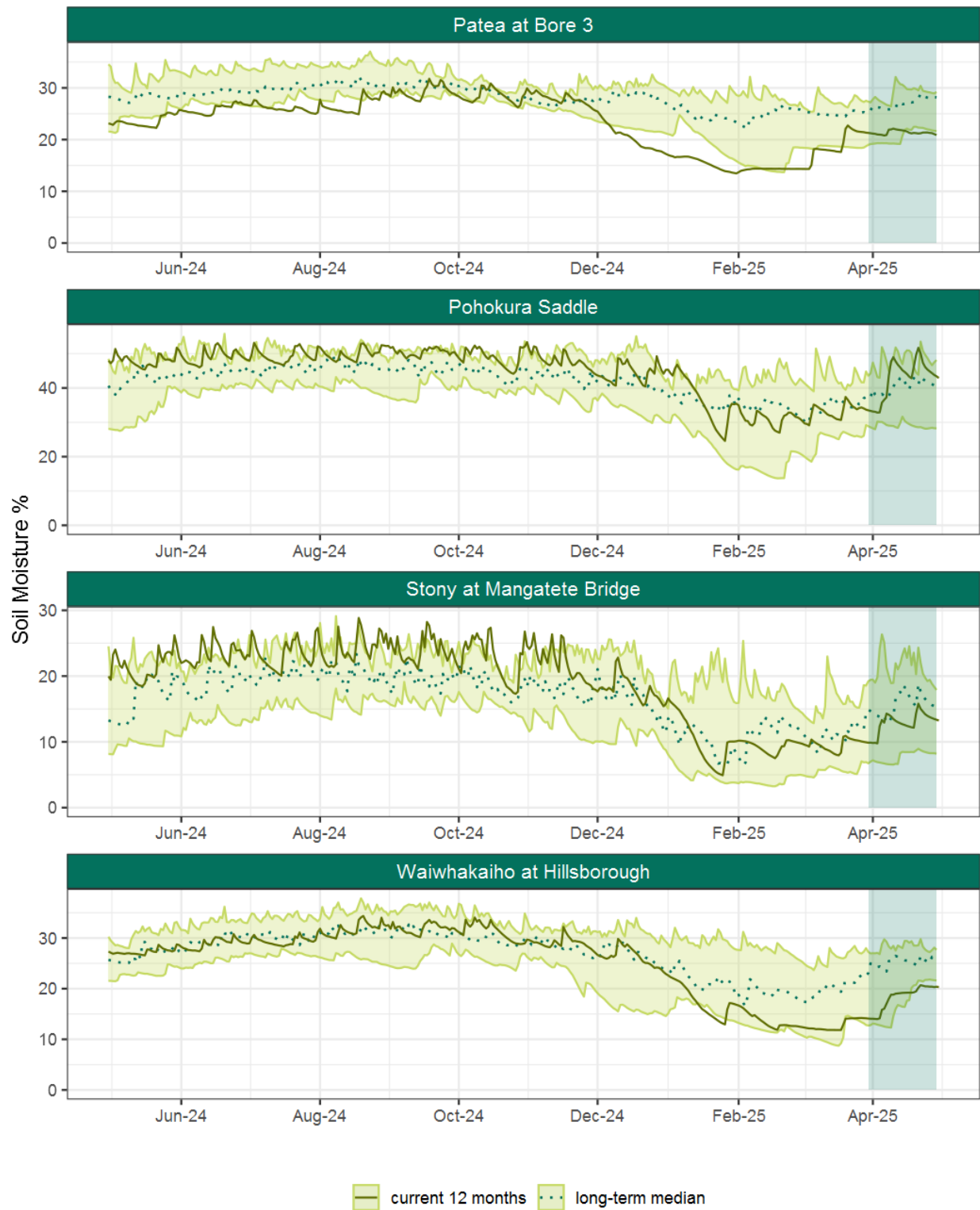


Figure 5.1: Running average soil moisture for selected sites, set in context of the historic record.

### 5.3 Monthly Bar Charts

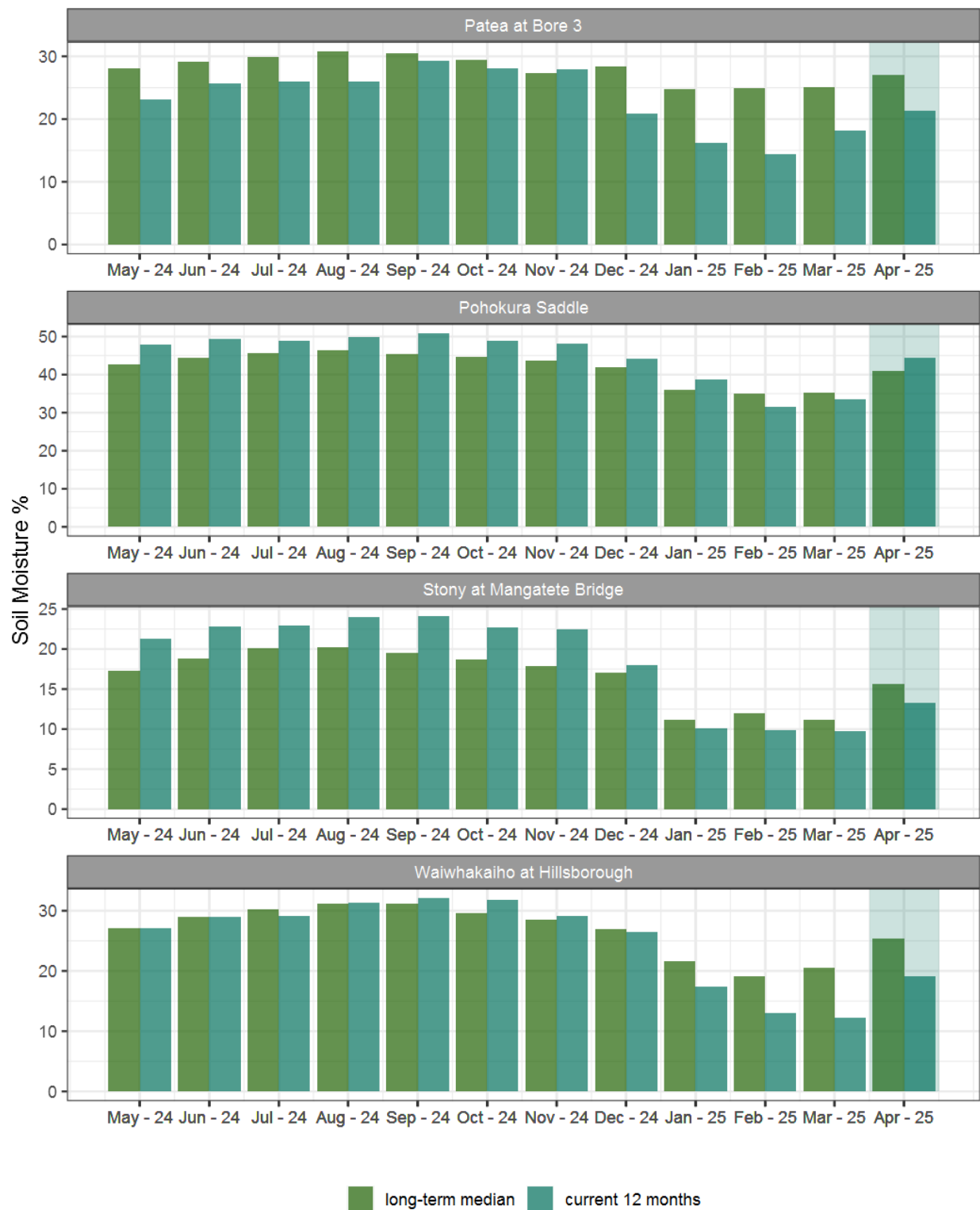
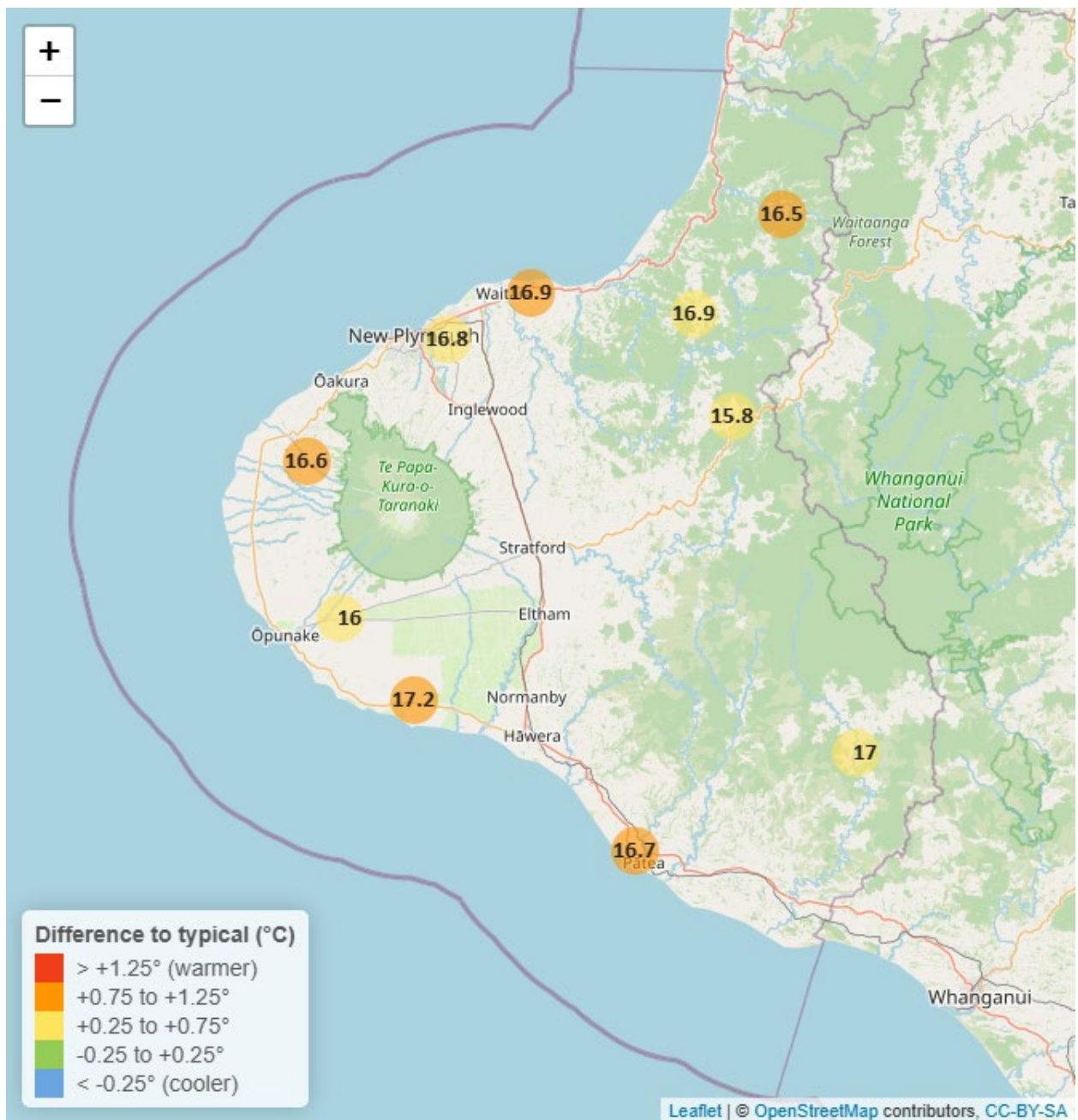


Figure 5.2: Monthly mean soil moisture for this month and the mean of all previously recorded months.



## 6. Soil Temperature

Map 6: April mean soil temperatures with difference to long-term mean (°C).



**Table 6: Summary of high, low and mean soil temperature for April and for April in all preceding years of record.**

| April 2025 - Soil Temperatures (°C) |               |          |               |          |               |          |               |            |
|-------------------------------------|---------------|----------|---------------|----------|---------------|----------|---------------|------------|
|                                     | Highs         |          | Lows          |          | Mean          |          |               |            |
| Site                                | current month | historic | current month | historic | current month | historic | April maximum | Data years |
| Kaupokonui at Glenn Rd              | 19.30         | 18.31    | 15.01         | 14.10    | 17.2          | 16.01    | 20.00         | 14         |
| Kotare at OSullivans                | 17.72         | 17.73    | 15.34         | 13.04    | 16.5          | 15.34    | 17.93         | 13         |
| Motunui M39 at Weston W3            | 18.45         | 17.91    | 15.46         | 13.86    | 16.9          | 15.82    | 18.60         | 10         |
| Patea at Bore 3                     | 18.93         | 18.63    | 15.09         | 13.82    | 16.7          | 15.94    | 19.45         | 8          |
| Pohokura Saddle                     | 17.56         | 17.96    | 14.51         | 13.61    | 15.8          | 15.36    | 17.80         | 10         |
| Stony at Mangatete Bridge           | 18.40         | 18.40    | 14.84         | 13.20    | 16.6          | 15.64    | 18.80         | 8          |
| Taungatara at Eltham Rd             | 18.10         | 17.76    | 14.11         | 13.69    | 16.0          | 15.40    | 18.80         | 12         |
| Uruti at Kaka Rd                    | 18.50         | 18.54    | 16.12         | 14.23    | 16.9          | 16.19    | 18.68         | 13         |
| Waitotara at Rimunui Station        | 19.96         | 19.53    | 14.63         | 14.20    | 17.0          | 16.46    | 20.87         | 6          |
| Waiwhakaiho at Hillsborough         | 18.37         | 18.36    | 15.23         | 14.17    | 16.8          | 16.18    | 18.76         | 13         |

## 6.2 Long-term data patterns



*Figure 6.1: Running average soil temperature for selected sites, set in context of the historic record.*

## 6.3 Monthly Bar Charts

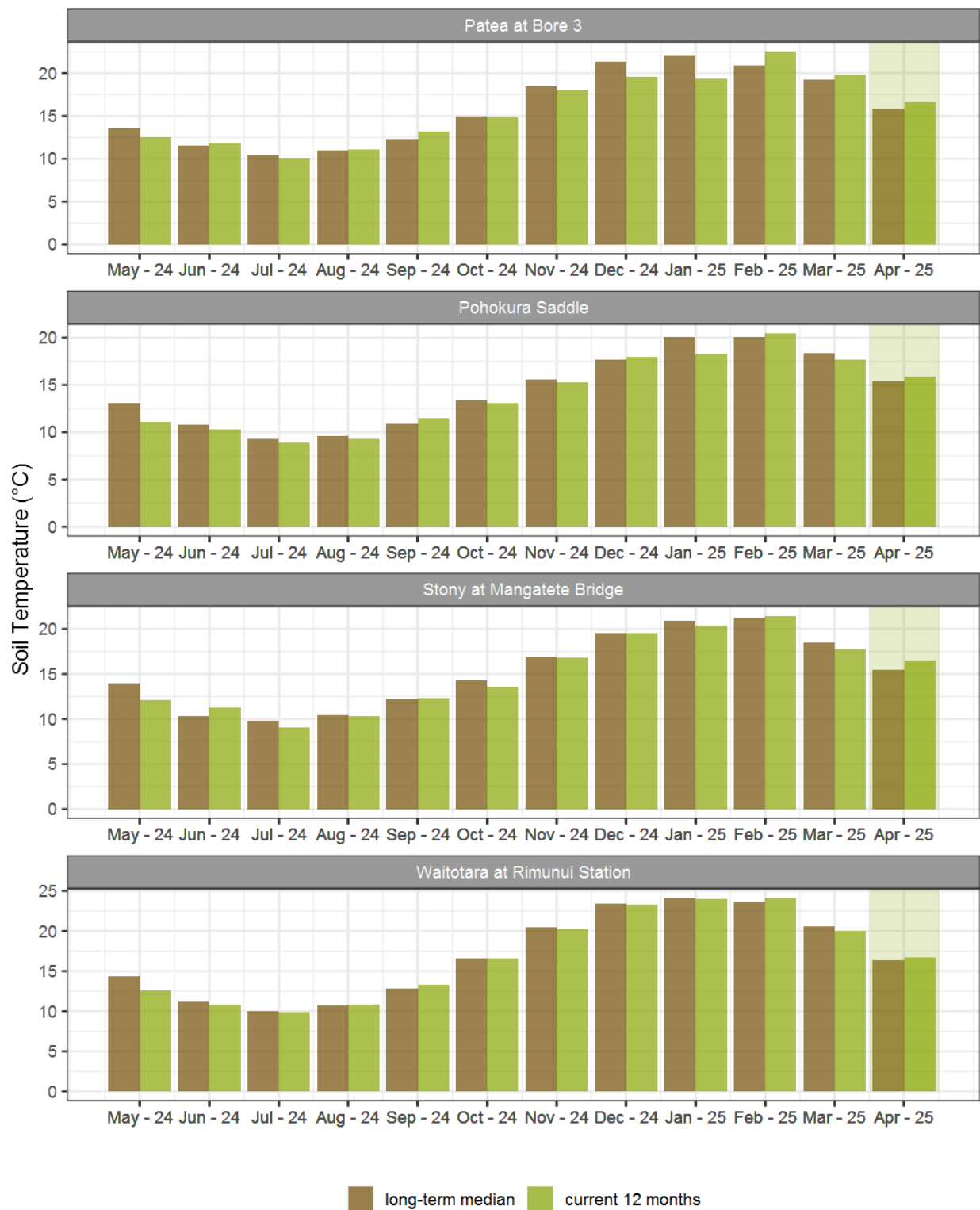
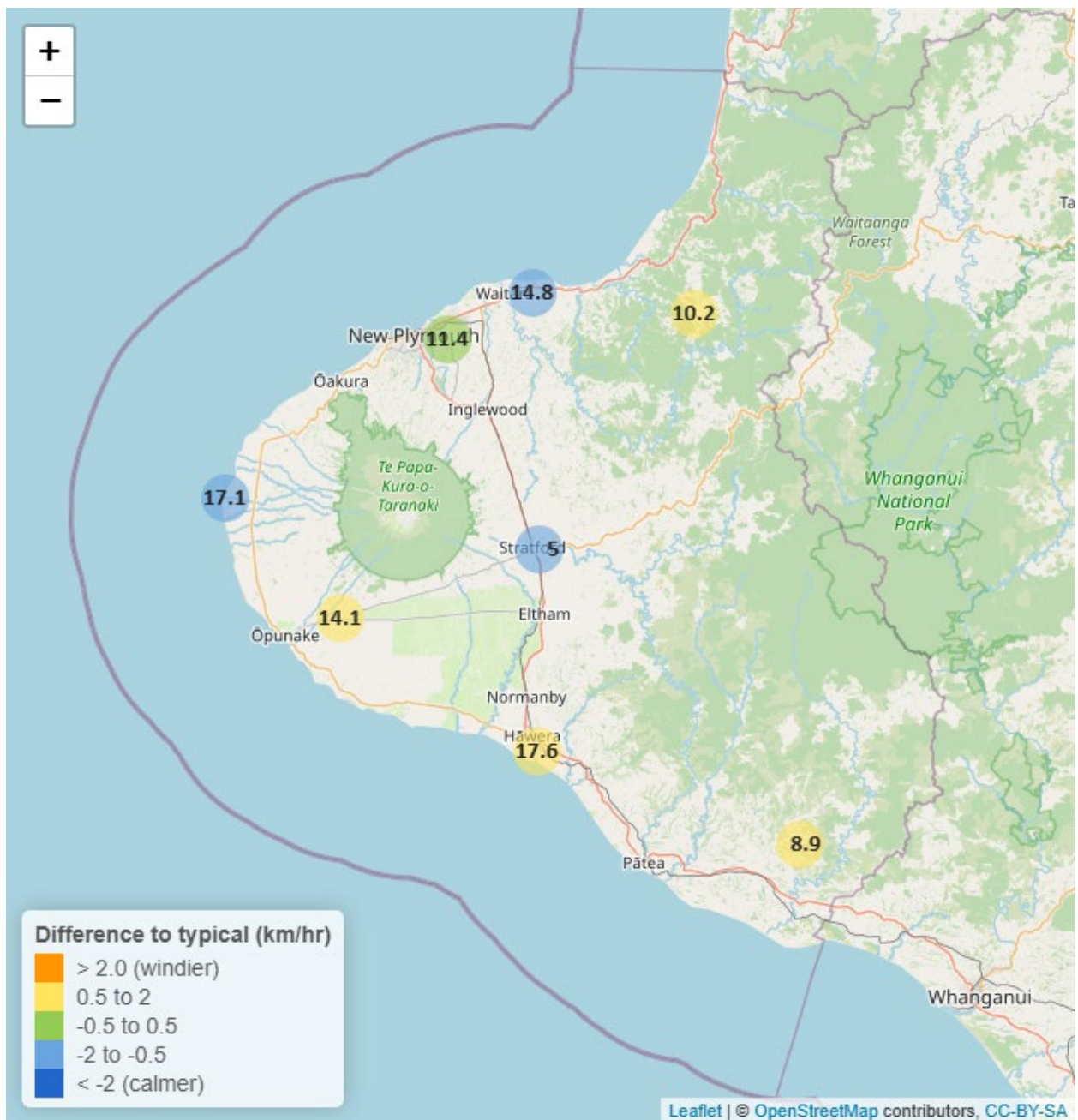


Figure 6.2: Monthly mean soil temperature for this month and the mean of all previously recorded months.

## 7. Wind Speed and Maximum Gusts

Map 7: April mean of wind speed with difference to long-term values (km/hr).



**Table 7: Summary of high, low and mean wind speed for April and for April in all preceding years of record.**

| April 2025 - Wind Speed (average) - (km/hr) |               |          |               |          |               |          |               |            |
|---|---------------|----------|---------------|----------|---------------|----------|---------------|------------|
|   | Highs         |          | Lows          |          | Mean          |          |               |            |
| Site  | current month | historic | current month | historic | current month | historic | April maximum | Data years |
| Hawera AWS                                  | 37.97         | 35.19    | 7.41          | 5.56     | 17.6          | 15.74    | 51.86         | 20         |
| Kapoaiaia at Lighthouse                     | 39.88         | 38.90    | 6.25          | 6.03     | 17.1          | 18.04    | 51.13         | 24         |
| New Plymouth AWS                            | 38.01         | 37.04    | 6.48          | 6.48     | 14.8          | 15.74    | 51.86         | 17         |
| Patea at Stratford                          | 16.74         | 16.51    | 2.01          | 2.06     | 5.0           | 5.73     | 21.80         | 19         |
| Taungatara at Eltham Rd                     | 33.03         | 29.62    | 6.02          | 6.32     | 14.1          | 13.59    | 51.25         | 9          |
| Uruti at Kaka Rd                            | 25.48         | 20.97    | 2.50          | 3.01     | 10.2          | 8.93     | 42.83         | 26         |
| Waitotara at Ngutuweru                      | 22.10         | 20.59    | 2.24          | 1.97     | 8.9           | 8.19     | 40.78         | 26         |
| Waiwhakaiho at Hillsborough                 | 26.92         | 26.09    | 4.65          | 4.08     | 11.4          | 11.71    | 35.57         | 7          |

**Table 8: Summary of high, low and maximum wind gusts for April and for April in all preceding years of record.**

| April 2025 - Wind Gusts (Maximum) - (km/hr) |               |          |               |          |               |          |               |            |
|---|---------------|----------|---------------|----------|---------------|----------|---------------|------------|
|   | Highs         |          | Lows          |          | Mean          |          |               |            |
| Site  | current month | historic | current month | historic | current month | historic | April maximum | Data years |
| Hawera AWS                                  | 79.64         | 70.38    | 27.78         | 20.37    | 40.7          | 42.60    | 79.64         | 20         |
| Kapoaiaia at Lighthouse                     | 66.60         | 79.35    | 20.16         | 20.20    | 40.0          | 43.50    | 73.44         | 24         |
| New Plymouth AWS                            | 72.23         | 75.93    | 22.22         | 20.37    | 42.6          | 42.60    | 75.93         | 17         |
| Patea at Stratford                          | 59.04         | 57.96    | 15.48         | 16.92    | 26.6          | 32.04    | 59.76         | 19         |
| Taungatara at Eltham Rd                     | 90.70         | 73.30    | 23.30         | 20.80    | 40.8          | 38.70    | 99.00         | 9          |
| Uruti at Kaka Rd                            | 80.28         | 65.88    | 23.40         | 19.10    | 40.0          | 34.20    | 101.52        | 24         |
| Waitotara at Ngutuweru                      | 70.56         | 62.64    | 22.68         | 17.30    | 36.4          | 35.20    | 93.60         | 26         |
| Waiwhakaiho at Hillsborough                 | 66.60         | 65.70    | 18.50         | 20.90    | 37.9          | 40.55    | 70.30         | 7          |



## 7.2 Long-term data patterns

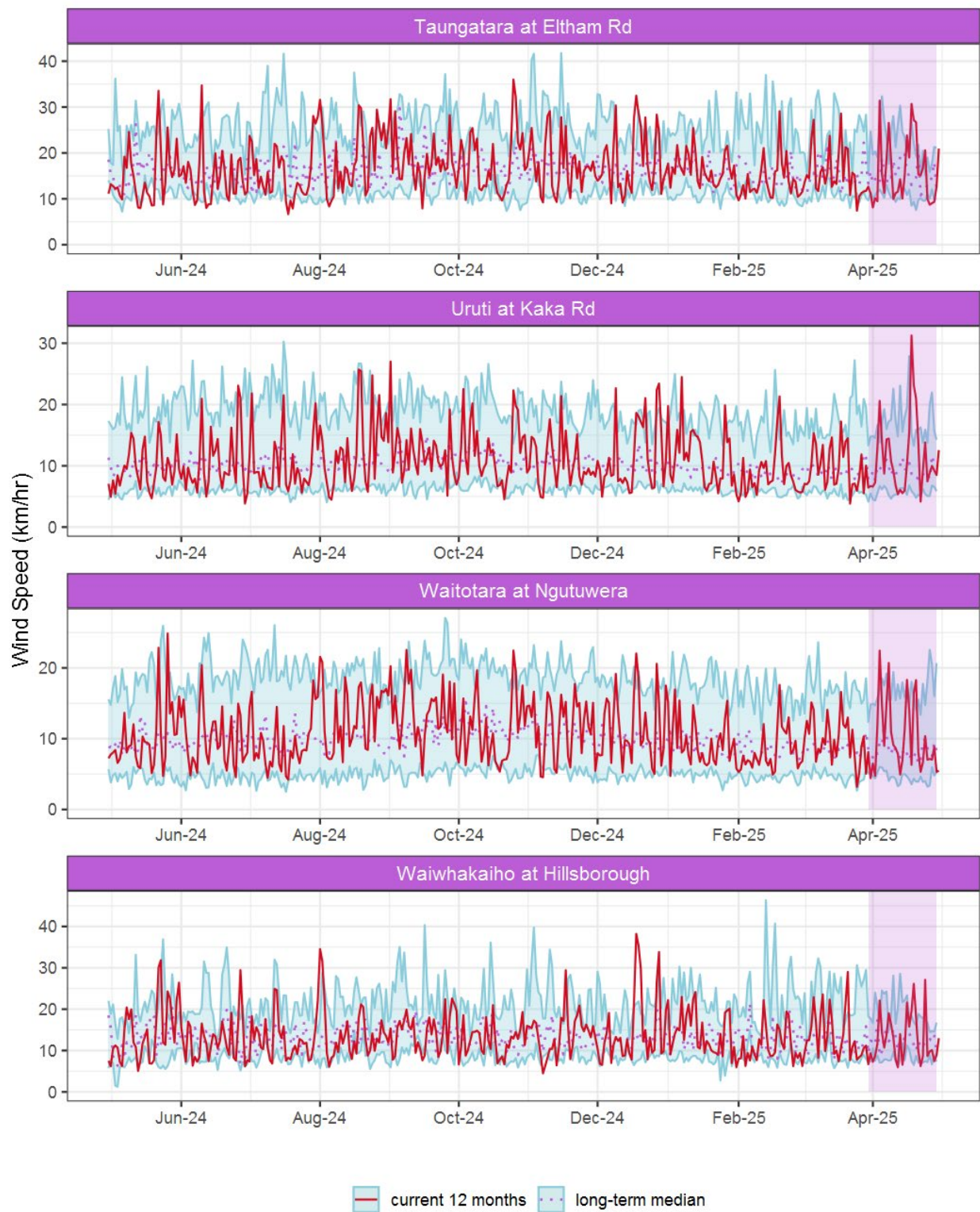


Figure 7.1: Running average wind speed (km/hr) for selected sites, set in context of the historic record.



### 7.3 Monthly Bar Charts

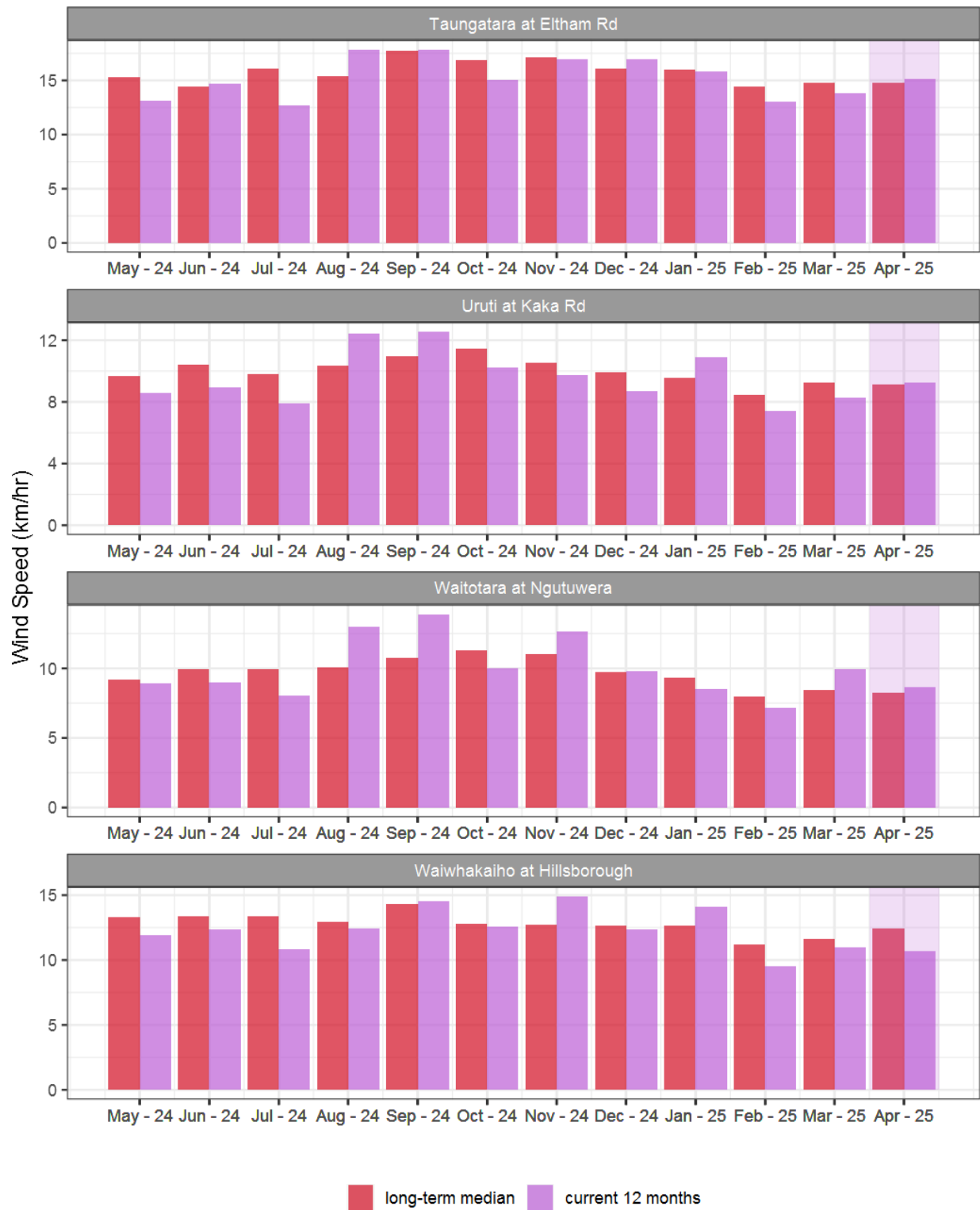


Figure 7.2: Monthly mean wind speed (km/hr) for selected sites, relative to the mean of all previously recorded months.

## 7.4 Wind roses for April 2025

### Average wind speed

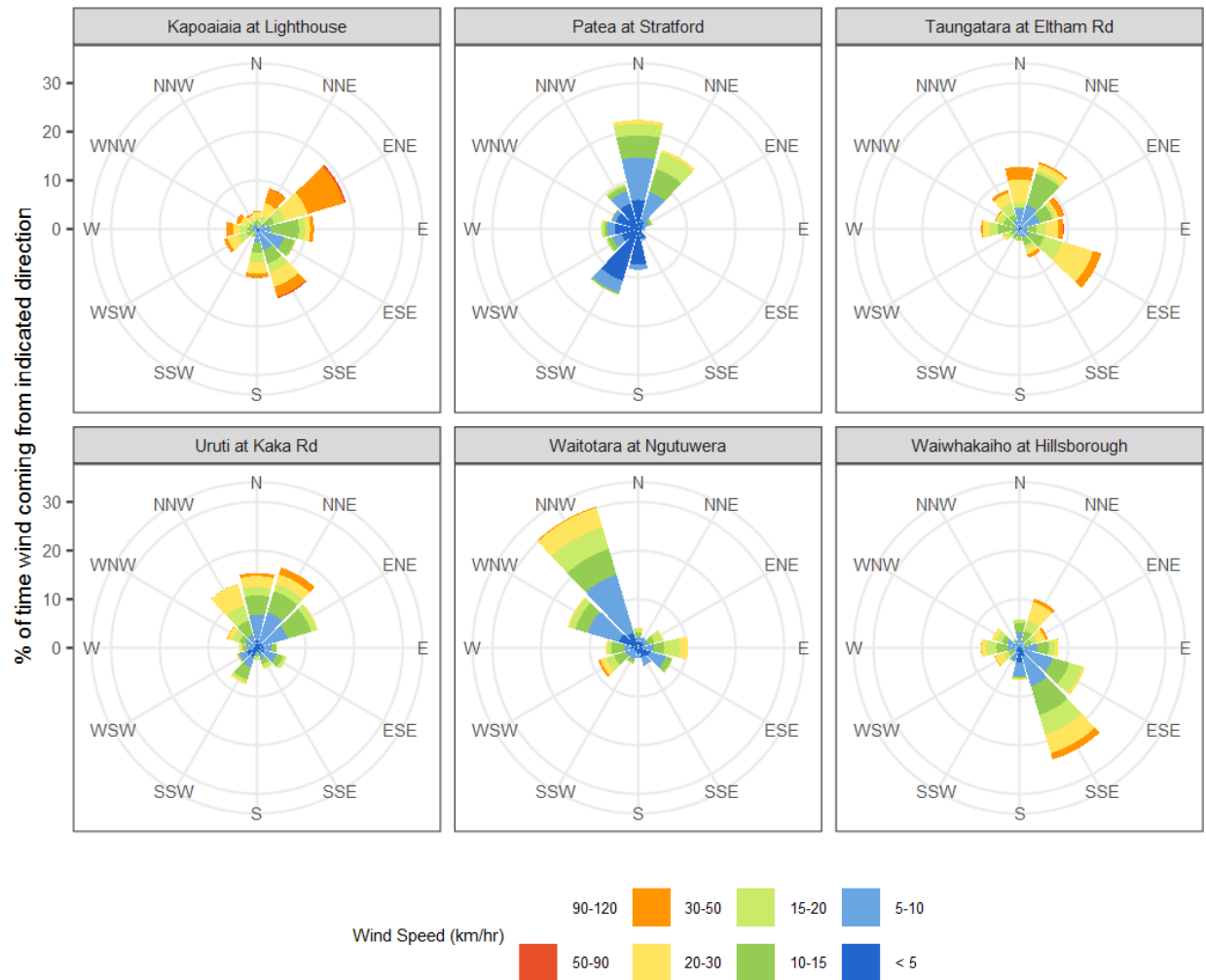


Figure 7.3: Wind roses for April for average wind speed (km/hr).

## Maximum gust strength

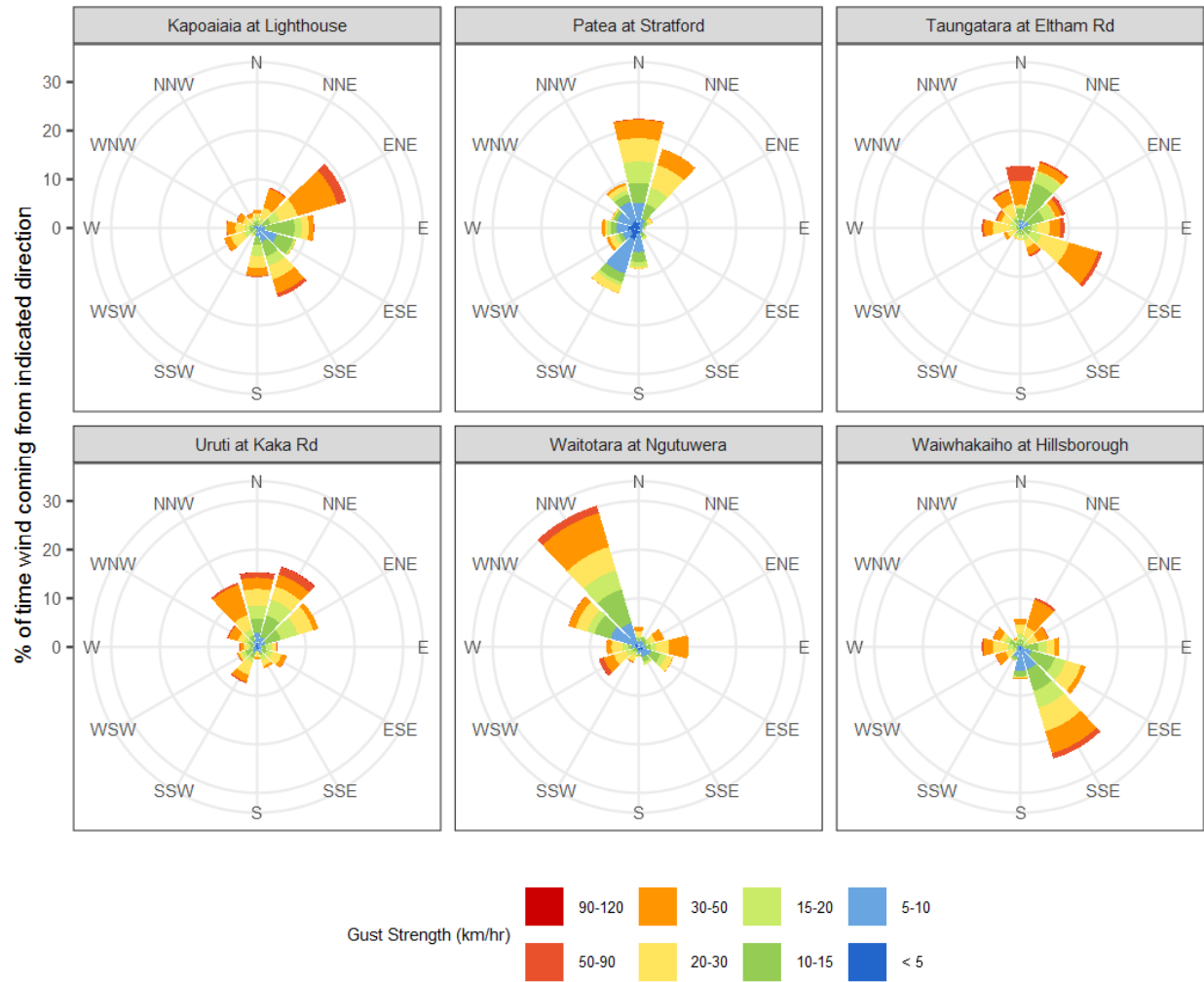


Figure 7.4: Wind roses for April for maximum wind gust (km/hr).

## Summary of month's conditions

### Rainfall

On average April rainfall was 177.2mm, 20% more than usual, ranging from 29% less rain than usual at Waitotara at Rimunui Station, and 107% more than usual at Mangorei Upper at Forest Hill.

Year-to-date rainfall is lowest at Waitotara at Hawken Rd with 45% less rainfall than normal, Mangorei Upper at Forest Hill has had the highest year-to-date rainfall with 6% less than normal. On average year-to-date rainfall has been 27% less rain than normal across all rain gauges. Compared to typical full year totals, on average sites have already received 19% of a typical year's rainfall, with the highest value at Mangorei Upper at Forest Hill, 23% of normal, whereas Kotare sits at 14% of the typical year's total.

### River Flow

Mean river flows for April were 17.4% lower than typical values, low flows were 6.8% lower, and high flows 17% greater than typical values. The maximum river flow recorded in April was 309.6m<sup>3</sup>/sec at Waiwhakaiho at Vickers Rd on 4 April.

### River Water Temperature

Mean river (non-mountain) water temperatures were 14.8°C, an average of 0.8°C warmer than long-term April values. Nighttime-low water temperatures were on average 0.7°C warmer than historic lows, and day-time high temperatures were on average 0.6°C warmer than historic highs. The maximum river water temperature recorded in April was 20.6°C at Patea at McColls Bridge on 1 April.

### Air Temperature

The average air temperature for the region (excluding Te Maunga sites) was 15.7°C, which is 1.5°C warmer than long-term April averages. Low air temperatures for April were on average 0.9°C warmer than the April average for previous years. Day-time high temperatures were on average 1°C warmer than historic highs. The maximum air temperature recorded in April was 25.1°C at Inglewood at Oxidation Ponds on 1 April.

### Soil Moisture

The average soil moisture for April across sites in Taranaki region was 26.5%. Soil moistures were on average 3% drier than typical April values. On average, low soil moistures were 1.8% wetter than previous lows, and the highs were on average 6.4% drier than previous values for April.

### Soil Temperature

April soil temperatures were generally 0.8°C warmer than long-term averages. Average nighttime low soil temperatures were 1.2°C warmer than recorded lows, and upper day-time soil temperatures were on average 0.2°C warmer than long-term April highs. The

maximum soil temperature recorded in April was 20.9°C at Waitotara at Rimunui Station, on 5 April.

#### Wind Speed (average and 10 minute gust)

April average wind speeds were 12.4km/hr, with average gust strength of 38.1km/hr, these were 0.2km/hr stronger, and 0.6km/hr weaker than the long-term average. Average calm weather wind speeds were 0.3km/hr stronger than recorded lows, and windy conditions were on average 1.9km/hr stronger than long-term April highs. The maximum wind gust recorded in April was 101.5km/hr at Uruti at Kaka Rd on 17 April.

Report date: 8 May 2025.

#### Supply of environmental data - General terms and conditions

The enclosed information is the highest quality data the Taranaki Regional Council (the Council) is currently able to provide. Some or all of the data being provided may not yet have been audited however, and is therefore subject to change.

As we endeavour to continuously improve our products, we also reserve the right to further amend data where necessary and without notice at any time. As a result, the information supplied to you now may not be the same as that subsequently produced for you or any other requestor.

While the Council has exercised all reasonable skill and care in controlling the contents of the information, you should independently check the information provided if the accuracy of that information is important to you.

Under no circumstances will the Council, its employees or agents be liable in contract, tort or otherwise to compensate you for any loss, injury or damage (including loss of profits or consequential loss) arising directly or indirectly from the supply by the Council or its agents of inadequate, inaccurate or incorrect environmental data.

Any use of the material supplied, for example, by inclusion in a report or a media release, should be accompanied by an acknowledgment of the source of the data. We also request that any outputs generated through the use of the information provided be provided to the Council.