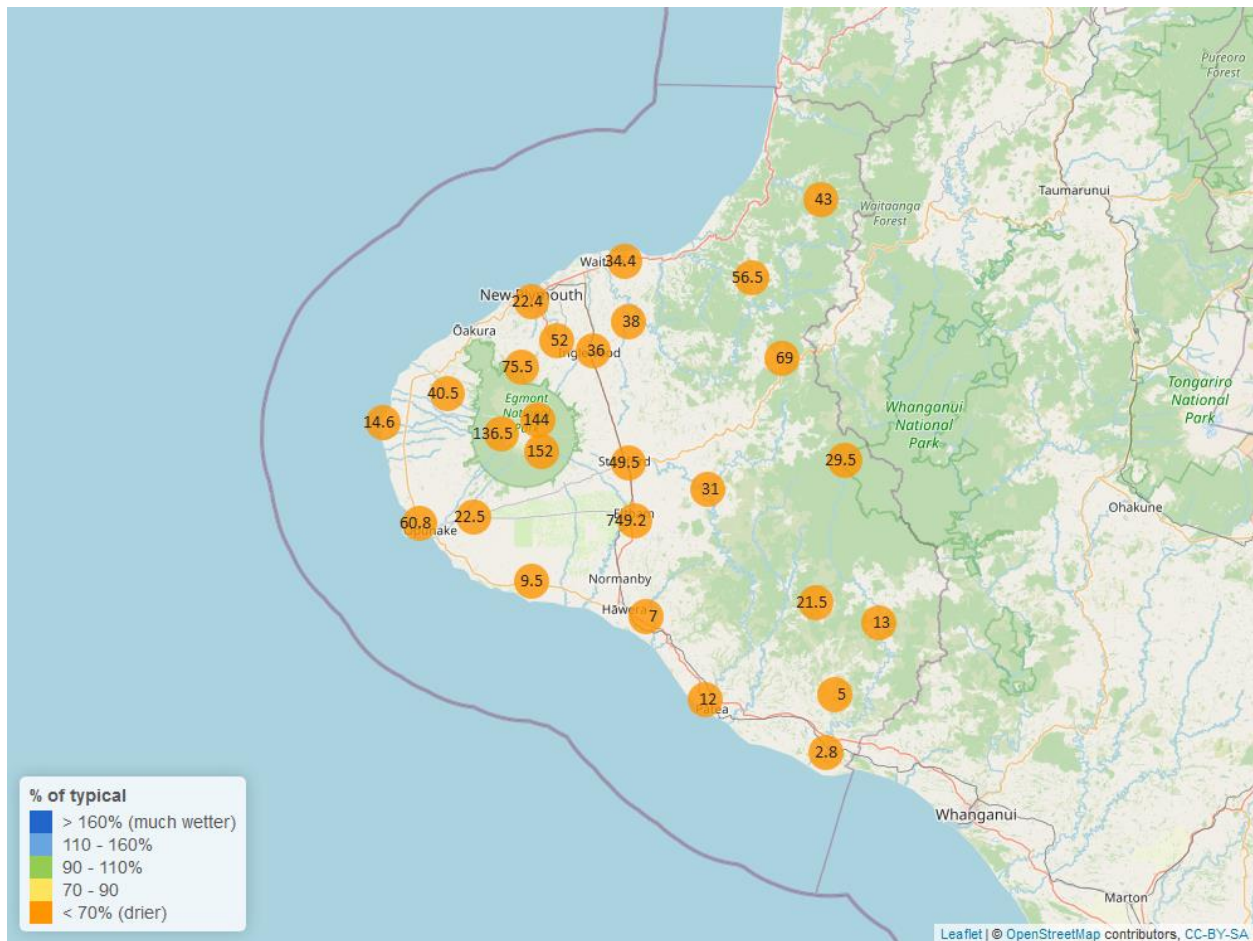


# Taranaki Regional Council Monthly Rainfall and Environmental Data Report for February 2025

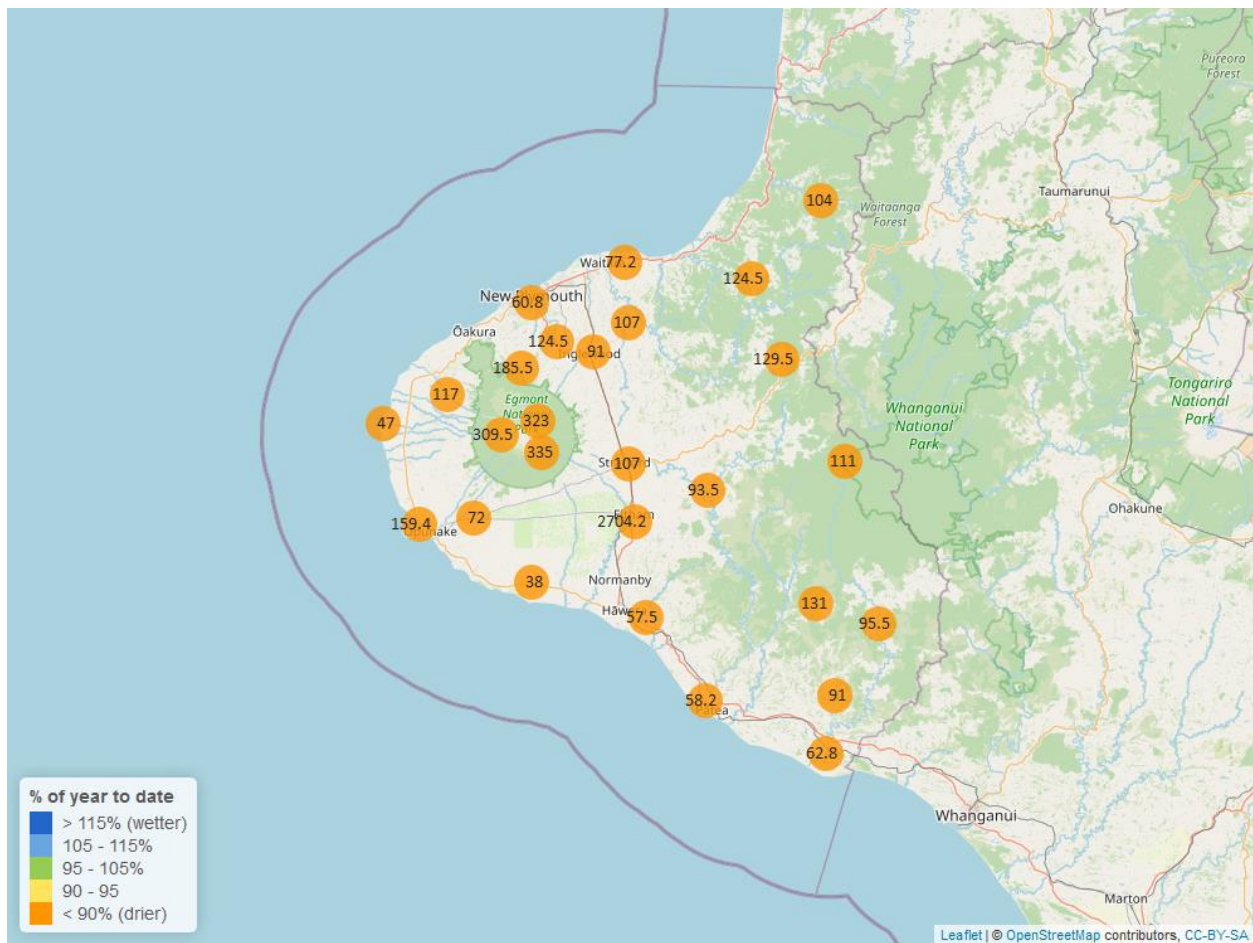
Note: The data presented here are provisional data only and may change as a result of quality control at a later date.

## 1. Rainfall

**Map 1: February total rainfall (mm) and percentage of long-term mean (colour key).**



**Map 1a. Total rainfall 1 January to end February (mm) and percentage of long-term mean (colour key).**



**Table 1: Rainfall February and year-to-date totals for rain gauge sites in Taranaki.**

	February			Year to Date			
Rain gauge	# days with rain	Total rain (mm)	% of typical month	Total to date (mm)	% of typical year to date	% of typical full year	Records Began
North Egmont at Visitors Centre	4	144.0	38.0	323.0	42.9	4.7	1996
Dawson Falls	8	152.0	46.7	335.0	50.4	5.3	1999
Kapoaiaia at Kahui Hut	8	136.5	52.6	309.5	55.7	5.9	2006
Mangorei Upper at Forest Hill	6	75.5	34.6	185.5	47.9	5.1	2018
Waiwhakaiho at Hillsborough	3	25.5	24.1	75.0	37.2	4.2	2013
Brooklands Zoo at New Plymouth	4	22.4	22.3	60.8	33.9	3.8	2012
Motunui M39 at Weston W3	4	34.4	34.5	77.2	41.1	4.9	1999
Waiwhakaiho at Egmont Village	4	52.0	33.9	124.5	44.3	5.2	1996
Manganui at Everett Park	5	38.0	28.1	107.0	42.4	5.1	1996
Inglewood at Oxidation Ponds	4	36.0	24.4	91.0	33.2	3.9	2000
Stony at Mangatete Bridge	6	40.5	28.9	117.0	47.3	5.9	2004
Kapoaiaia at Lighthouse	4	14.6	15.6	47.0	28.3	3.5	1999
Taungatara at Eltham Rd	5	22.5	26.3	72.0	41.9	4.6	2005
Kaupokonui at Glenn Rd	2	9.5	14.1	38.0	27.8	3.3	1998
Patea at Stratford	6	49.5	41.2	107.0	48.6	5.4	1999
Mangaehu at Bridge	5	31.0	28.2	93.5	48.6	5.9	1999
Kotare at OSullivans	5	43.0	35.3	104.0	39.8	4.8	1998
Uruti at Kaka Rd	5	56.5	41.1	124.5	46.7	5.6	1996
Pohokura Saddle	5	69.0	58.3	129.5	56.0	6.5	1996
Omaru at Charlies	4	29.5	30.0	111.0	55.2	6.1	2006
Omahine at Moana Trig	3	21.5	21.0	131.0	66.6	7.8	2007

	February			Year to Date			
Rain gauge	# days with rain	Total rain (mm)	% of typical month	Total to date (mm)	% of typical year to date	% of typical full year	Records Began
Waitotara at Rimunui Station	2	13.0	15.9	95.5	58.4	7.0	1996
Waitotara at Ngutuwera	1	5.0	6.4	91.0	57.0	7.1	1999
Tawhiti at Duffys	3	7.0	10.3	57.5	43.4	5.2	1996
Patea at Bore 3	4	12.0	16.4	58.2	40.5	5.0	2006
Waitotara at Hawken Rd	1	2.8	2.9	62.8	39.2	5.5	2016

Notes: Low and high values in tables refer to the upper and lower 5th percentiles of the historic record for each site (except for wind gust and soil moisture which are the upper and lower 1st percentiles). Percentile values give a better indication of the general upper and lower range of the historic data against which to compare the current month. Start year (records began) shows the length of data used to compute historic highs, lows, and "typical values". Sites with a longer data record will generally provide a more reliable comparison to values in the current year.

## 1.2 Long-term data patterns

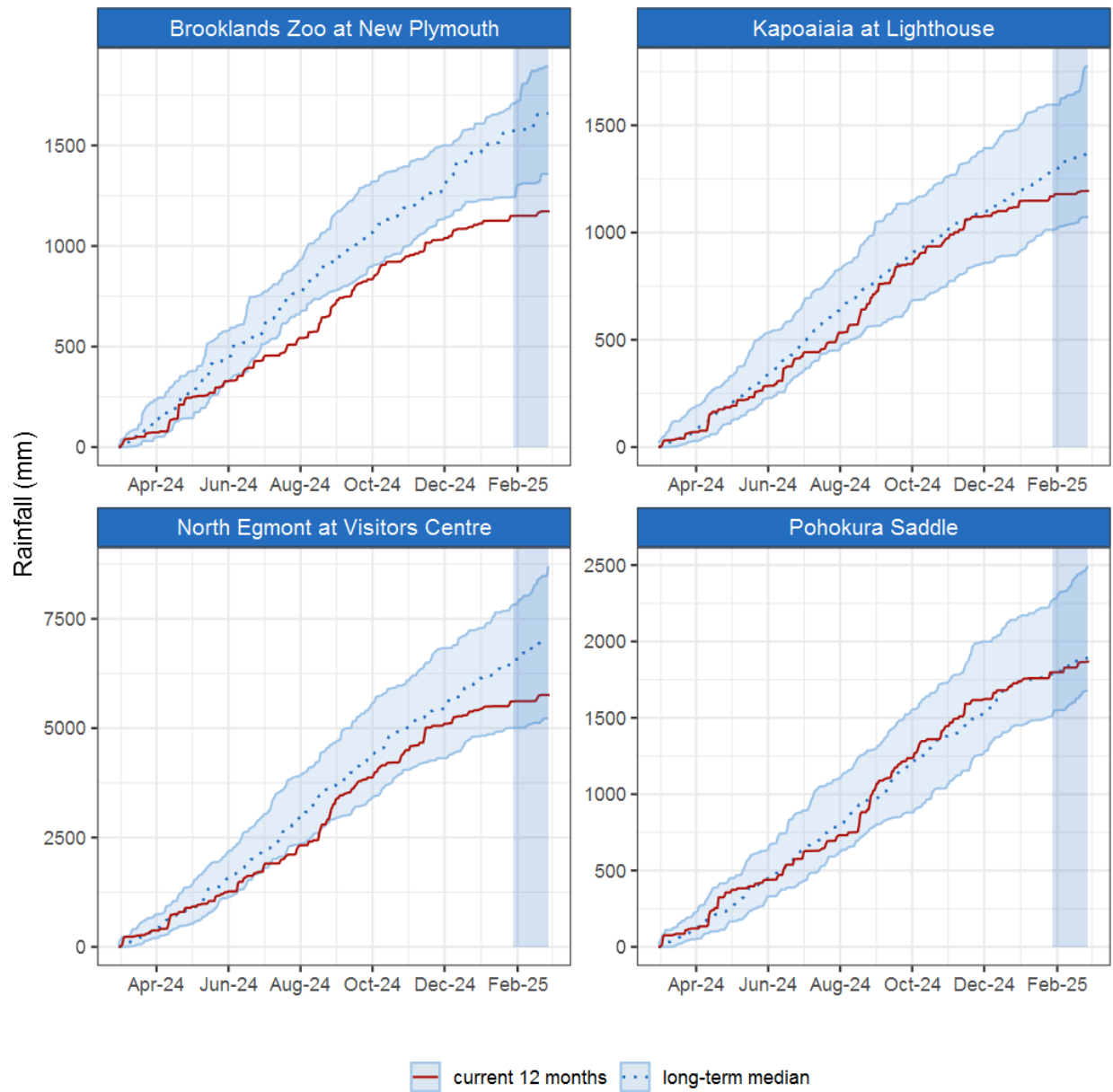
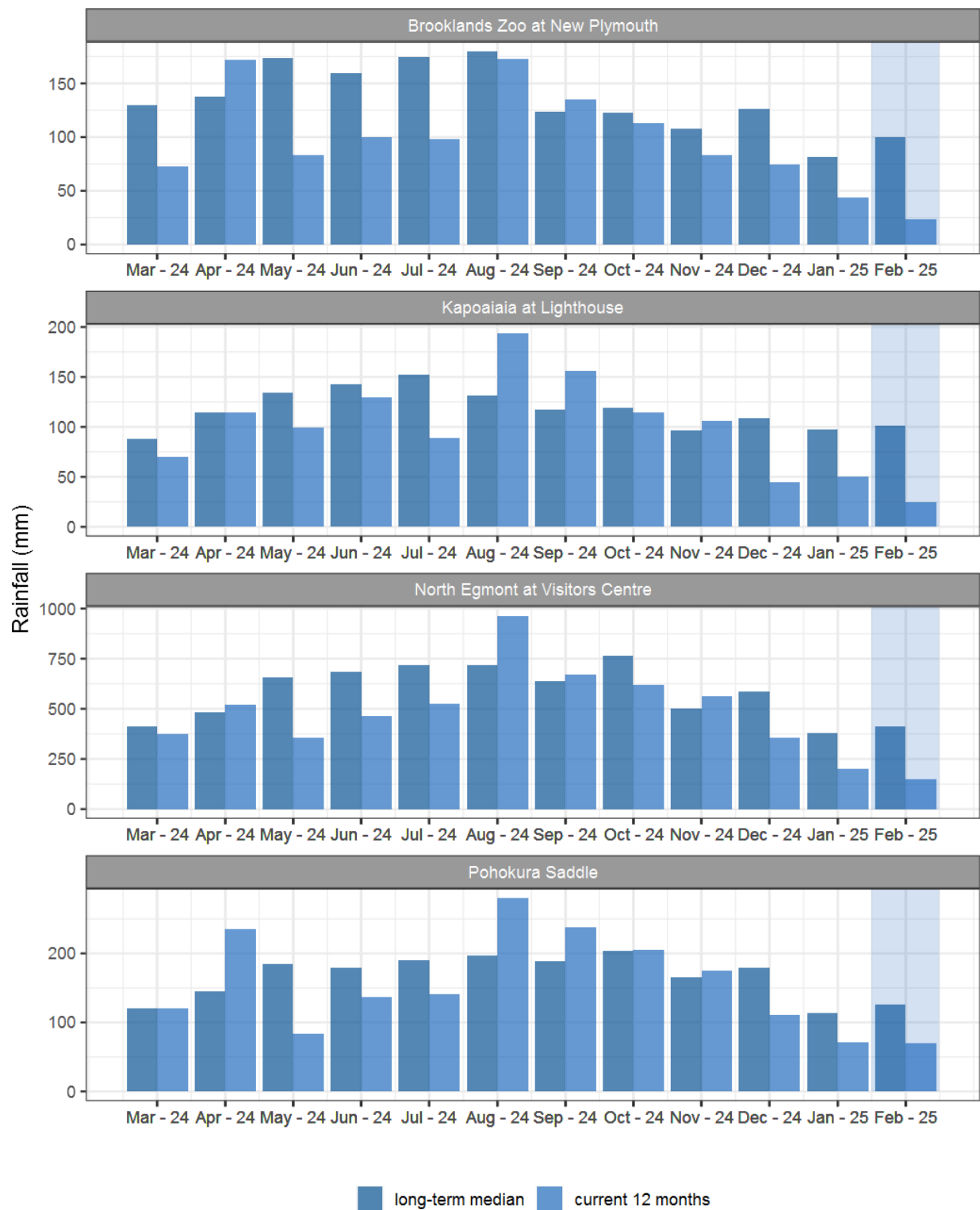


Figure 1.1: This year's and last year's data set in context of historic record at selected rain gauge sites in Taranaki.

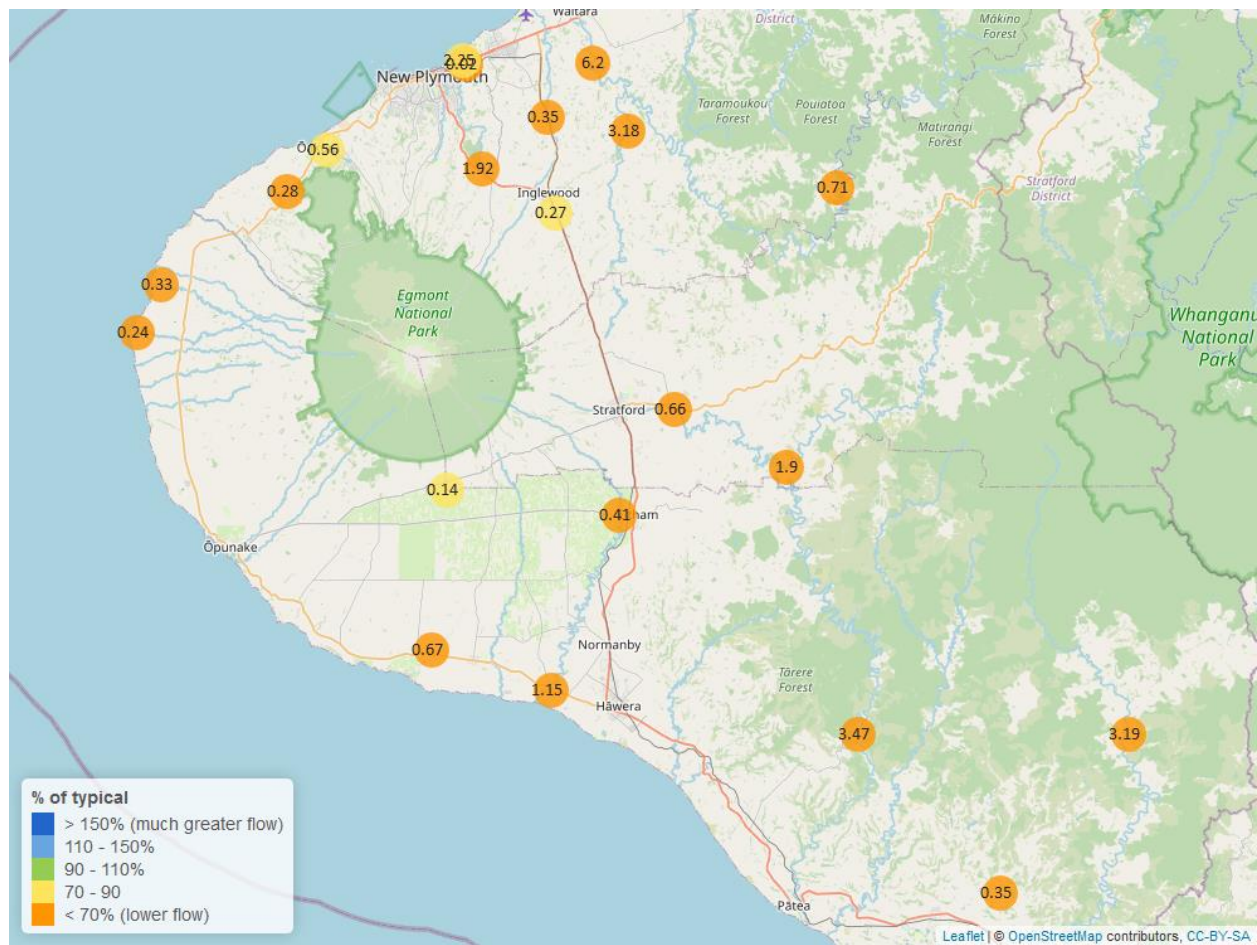
### 1.3 Monthly Bar Charts



*Figure 1.2: Monthly rainfall totals for this month and the mean of all previously recorded months.*

## 2. River Flow

Map 2: February mean river flows (m<sup>3</sup>/sec), with difference as percentage of long-term mean.



**Table 2: Summary of high, low and mean flow for February and for February in all preceding years of record.**

February 2025 - Recorded flows (m3/sec)								
	Highs		Lows		Mean			
River and Site	current month	historic	current month	historic	current month	historic	February maximum	Data years
Kapoaiaia at Lighthouse	0.36	1.79	0.20	0.24	0.24	0.37	0.72	38
Kaupokonui at Glenn Rd	0.84	3.73	0.54	0.64	0.67	1.06	1.63	46
Mangaehu at Bridge	3.76	24.29	1.76	1.84	1.90	3.46	6.36	47
Manganui at Everett Park	6.06	36.80	2.90	2.99	3.18	4.97	12.78	32
Mangaone 3 at Stub Rd	0.05	0.68	0.01	0.05	0.02	0.12	0.32	5
Mangawheroiti Above Intake W.W	0.14	0.56	0.13	0.13	0.14	0.17	0.21	12
Moumahaki at Johnston Rd	0.46	4.80	0.33	0.39	0.35	0.53	0.58	7
Ngatoro at SH3	0.47	1.68	0.25	0.23	0.27	0.38	1.48	35
Oakura at Victoria Rd	1.59	5.35	0.46	0.32	0.56	0.68	7.87	6
Patea at McColls Bridge	12.14	57.40	2.69	1.83	3.47	6.07	46.20	36
Patea at Skinner Rd	1.26	8.33	0.55	0.54	0.66	1.35	2.56	46
Timaru at Tataraimaka	0.61	2.96	0.24	0.28	0.28	0.55	1.94	11
Waingongoro at Eltham Rd	0.69	3.92	0.37	0.35	0.41	0.68	1.69	50
Waingongoro at SH45	1.69	9.37	1.06	1.09	1.15	2.03	2.62	44
Waiongana at SH3a	0.65	5.26	0.32	0.35	0.35	0.67	1.95	44
Waitara at Bertrand Rd	13.09	125.69	4.98	5.70	6.20	12.59	24.31	44
Waitara at Purangi Bridge	3.20	45.34	0.49	0.44	0.71	2.08	6.20	25
Waitotara at Rimunui Station	4.42	22.78	2.54	2.10	3.19	4.86	5.60	20
Waiwhakaiho at Egmont Village	4.25	13.76	1.80	1.81	1.92	2.76	14.34	44
Waiwhakaiho at Vickers Rd	8.61	26.01	1.80	1.91	2.25	3.08	30.81	5
Warea at Coast	0.53	2.21	0.31	0.26	0.33	0.48	0.95	9

## 2.2 Long-term data patterns

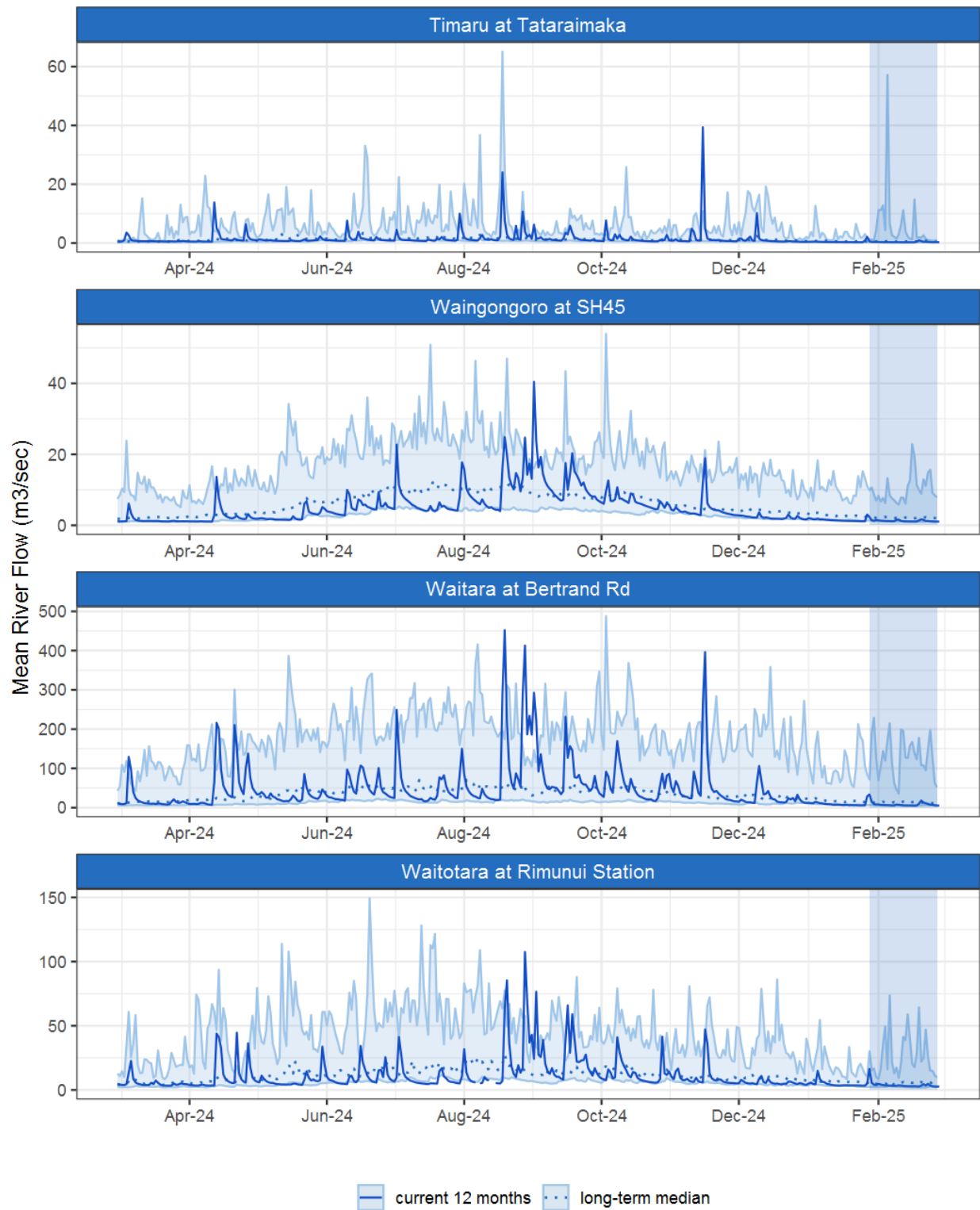


Figure 2.1: Running average river flows for selected sites, set in context of the historic record.

## 2.3 Monthly Bar Charts

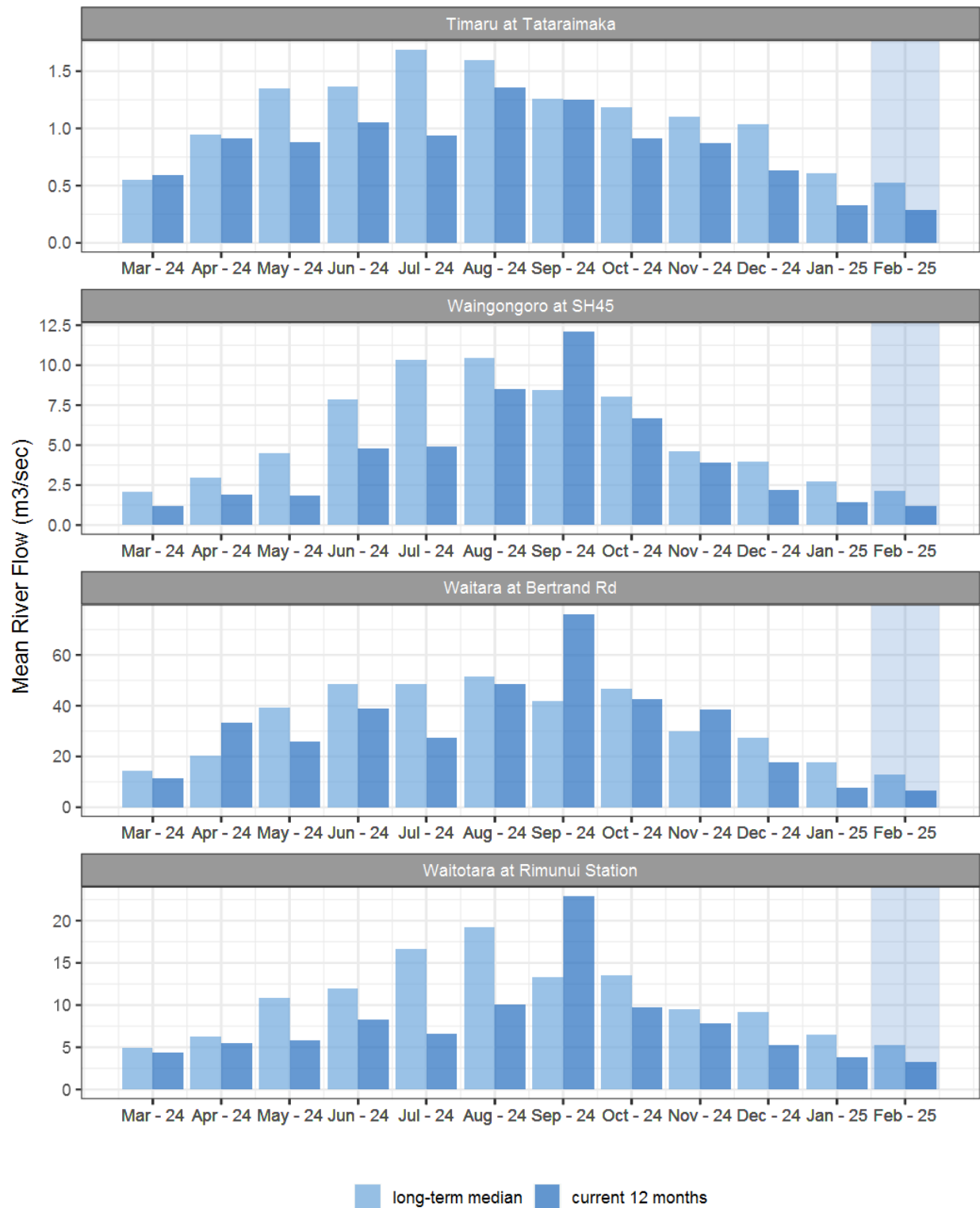
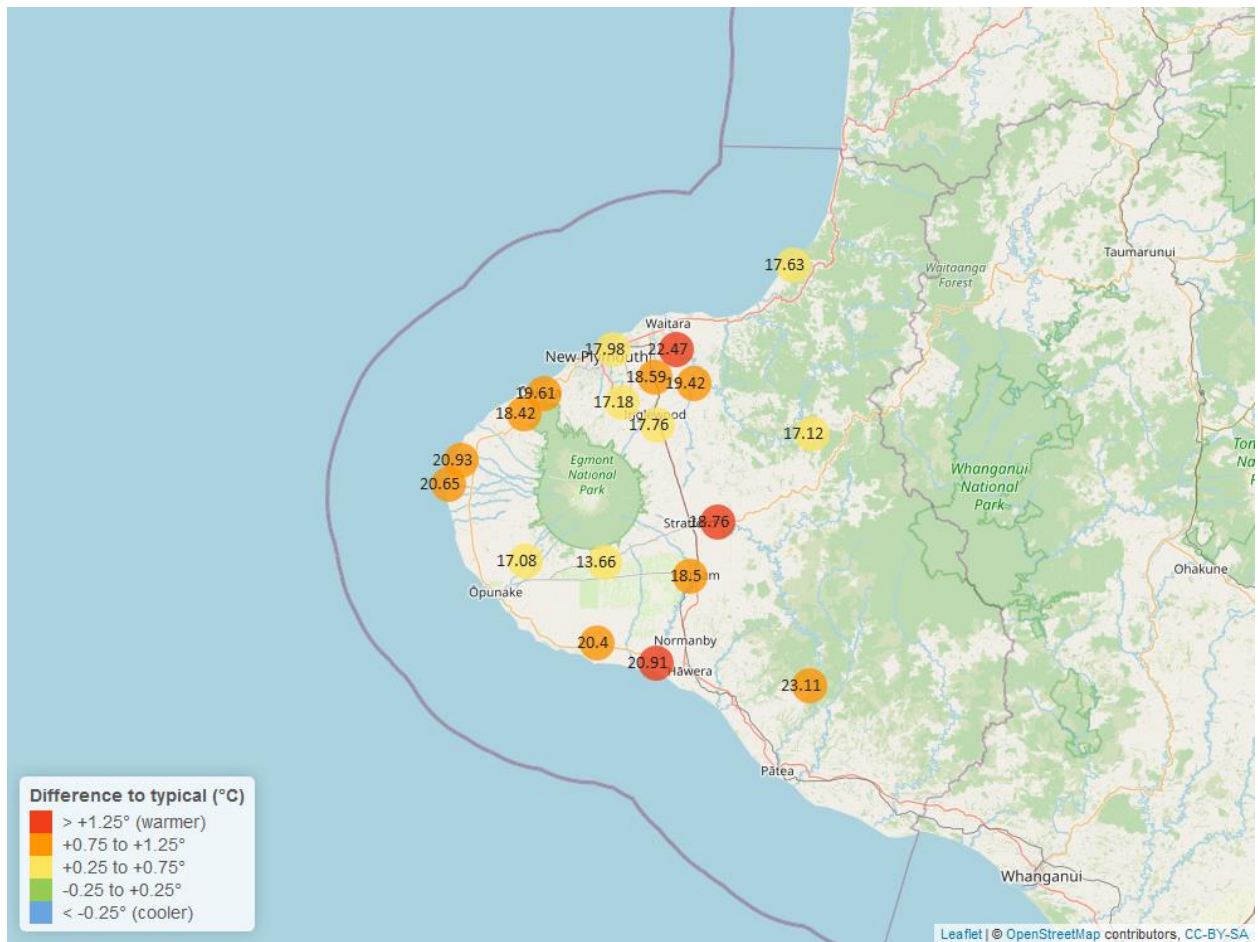


Figure 2.2: Monthly mean river flow for this month and the mean of all previously recorded months.

### 3. River Temperature

Map 3: February mean water temperature with difference to long-term mean (°C).



**Table 3: Summary of high, low and mean river temperature for February and for February in all preceding years of record.**

February 2025 - River Temperature (°C)								
	Highs		Lows		Mean			
River and Site	current month	historic	current month	historic	current month	historic	February maximum	Data years
Kapoaiaia at Lighthouse	24.22	23.73	17.57	15.75	20.65	19.56	25.92	24
Kaupokonui at Glenn Rd	24.98	23.66	17.16	15.41	20.40	19.36	26.09	33
Manganui at Everett Park	21.36	22.12	17.24	15.64	19.42	18.65	22.34	16
Mangaone 3 at Stub Rd	20.54	20.29	16.08	15.18	17.98	17.69	21.62	5
Mangawheroiti Above Intake W.W	15.38	15.89	12.22	11.15	13.66	13.25	18.11	12
Matau at Woolshed	19.79	20.45	14.60	13.65	17.12	16.74	21.36	7
Ngatoro at SH3	19.61	20.06	15.73	14.10	17.76	17.02	20.18	23
Oakura at Victoria Rd	22.78	22.16	17.17	15.44	19.61	18.42	24.15	6
Patea at McColls Bridge	24.56	24.25	22.04	18.99	23.11	21.93	24.98	9
Patea at Skinner Rd	20.76	20.78	16.55	14.37	18.76	17.40	21.59	21
Timaru at Tataraimaka	21.14	20.50	16.10	14.91	18.42	17.43	22.09	10
Waiaua 2 at Barraclough Opua	21.81	21.38	13.61	12.41	17.08	16.35	23.61	5
Waikaramarama at Bridge	19.23	19.34	15.85	15.03	17.63	17.21	19.79	7
Waingongoro at Eltham Rd	20.74	20.94	16.20	14.54	18.50	17.74	21.61	21
Waingongoro at SH45	23.33	22.40	18.55	15.62	20.91	19.34	24.36	19
Waiongana at SH3a	21.18	20.90	16.50	14.60	18.59	17.45	22.43	13
Waitara at Bertrand Rd	24.81	23.79	20.66	17.40	22.47	20.61	25.64	38
Waiwhakaiho at Egmont Village	19.29	19.51	15.19	13.46	17.18	16.47	20.23	31
Warea at Coast	24.34	24.31	17.70	15.52	20.93	19.86	26.10	6

### 3.2 Long-term data patterns

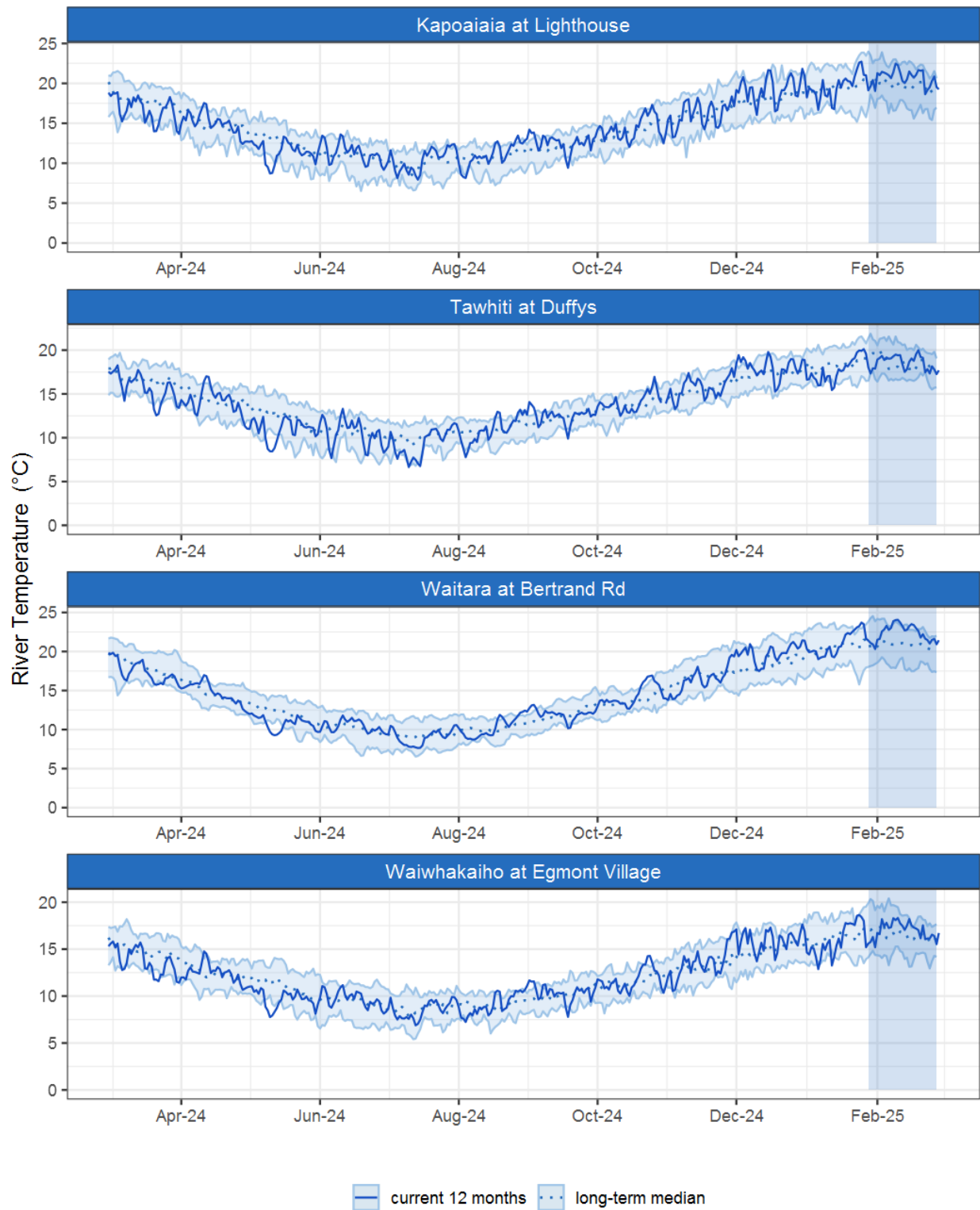


Figure 3.1: Running average river temperature for selected sites, set in context of the historic record.

### 3.3 Monthly Bar Charts

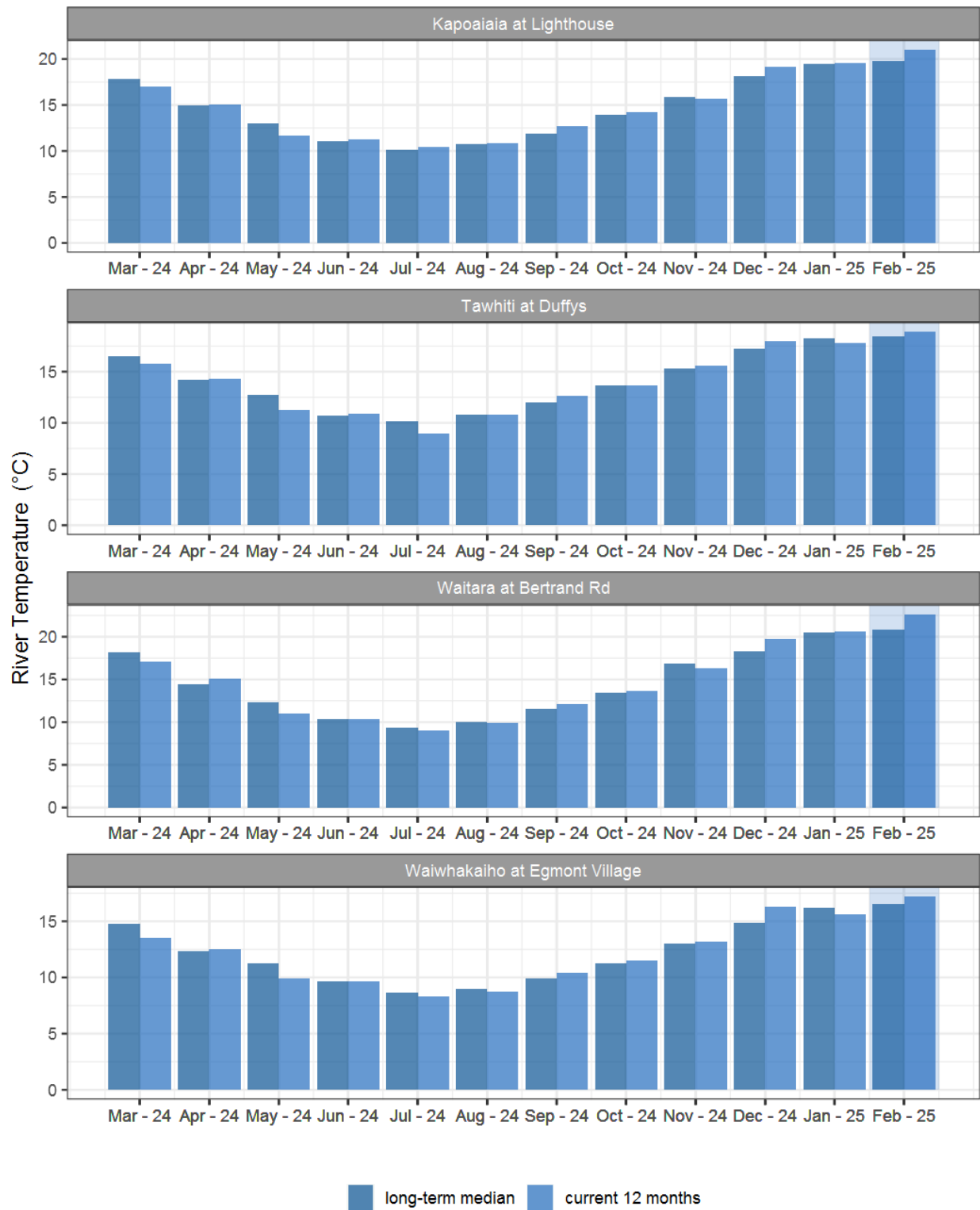
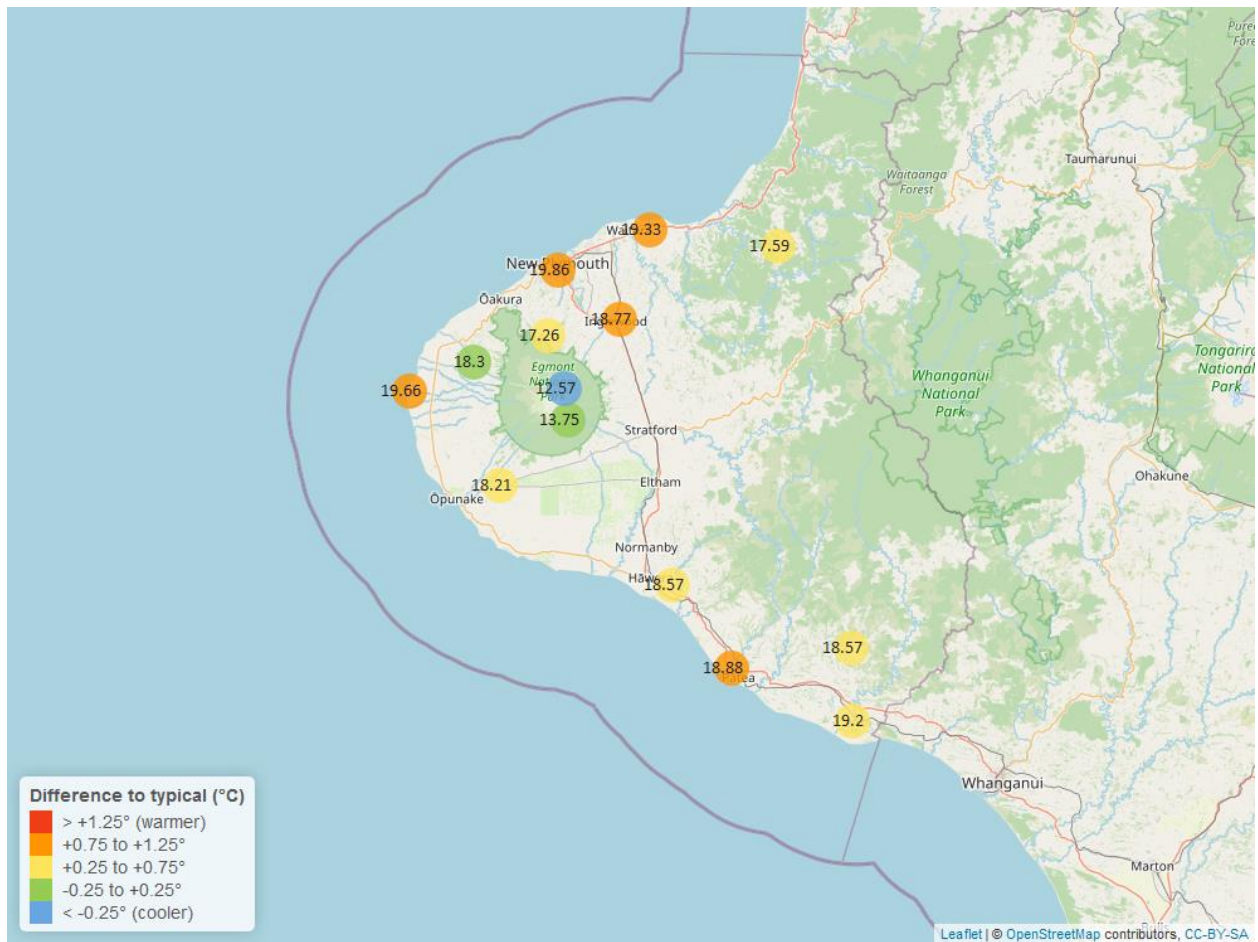


Figure 3.2: Monthly mean river temperature for this month and the mean of all previously recorded months.

## 4. Air Temperature

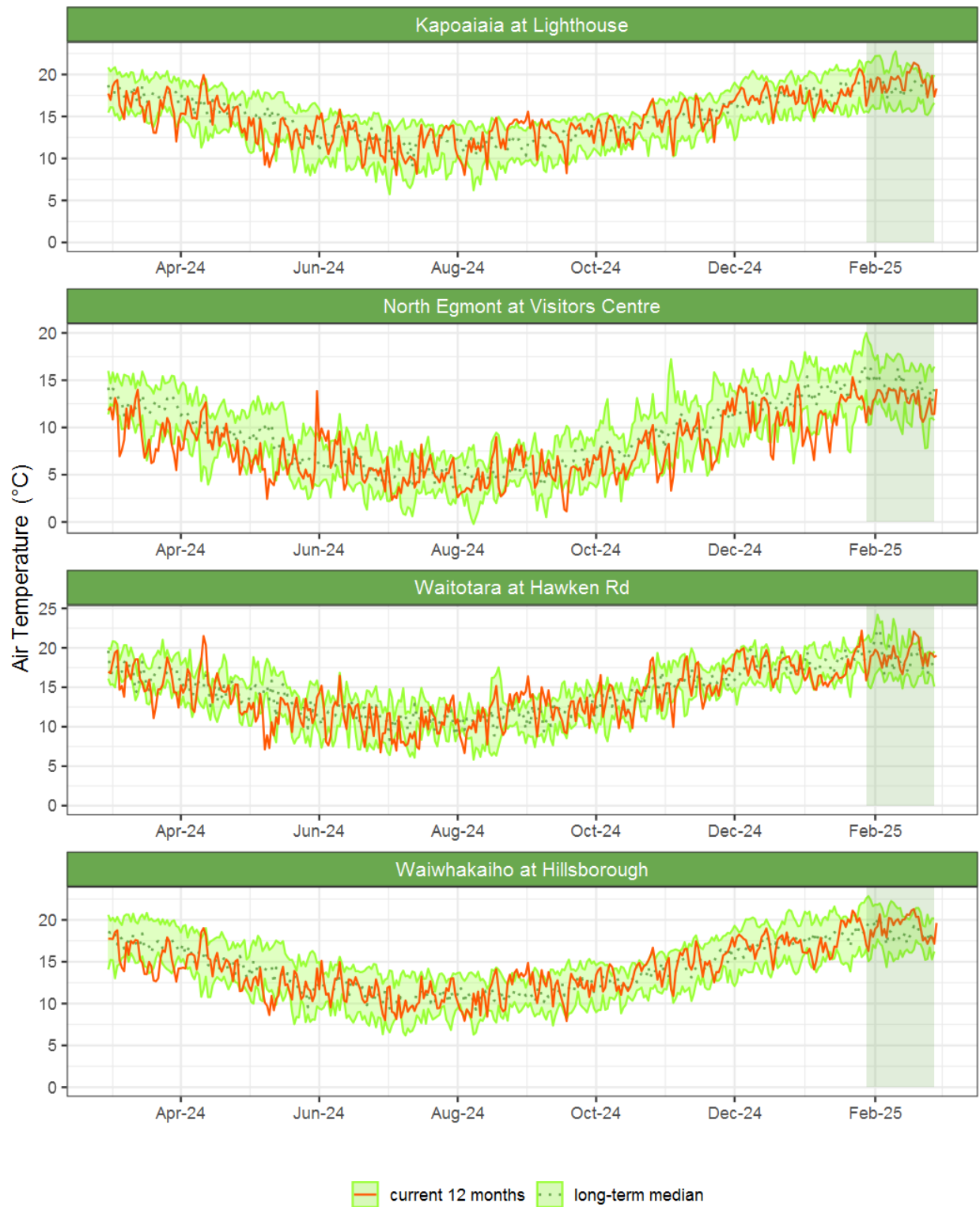
Map 4: February mean air temperature with difference to long-term mean (°C).



**Table 4: Summary of high, low and mean air temperature for February and for February in all preceding years of record.**

February 2025 - Air Temperature (°C)								
	Highs		Lows		Mean			
Site	current month	historic	current month	historic	current month	historic	February maximum	Data years
Brooklands Zoo at New Plymouth	25.55	25.08	13.73	12.80	19.86	18.89	27.90	13
Dawson Falls	18.85	19.68	8.81	7.88	13.75	13.80	20.64	9
Inglewood at Oxidation Ponds	26.84	24.93	12.48	10.85	18.77	17.57	28.83	13
Kapoaiaia at Lighthouse	22.76	22.68	14.36	13.24	19.66	18.67	25.90	12
Mangorei Upper at Forest Hill	22.30	21.60	12.54	11.29	17.26	16.84	24.29	7
Motunui M39 at Weston W3	24.01	23.15	13.81	12.23	19.33	18.47	26.30	8
North Egmont at Visitors Centre	18.12	19.38	7.97	7.96	12.57	13.82	19.67	10
Patea at Bore 3	23.01	23.71	13.94	12.39	18.88	18.07	27.58	13
Stony at Mangatete Bridge	23.30	23.34	13.16	12.27	18.30	18.07	26.36	9
Taungatara at Eltham Rd	22.65	23.02	12.37	11.73	18.21	17.70	24.55	9
Tawhiti at Duffys	23.45	23.53	9.64	9.09	18.57	18.02	26.07	11
Uruti at Kaka Rd	23.32	22.85	13.26	11.53	17.59	16.97	26.78	6
Waitotara at Hawken Rd	24.36	24.57	12.91	12.57	19.20	18.85	27.63	8
Weraweraonga at Mangawhio Rd	25.16	25.09	10.77	10.15	18.57	17.84	27.33	6

## 4.2 Long-term data patterns



*Figure 4.1: Running average air temperature for selected sites, set in context of the historic record.*

### 4.3 Monthly Bar Charts

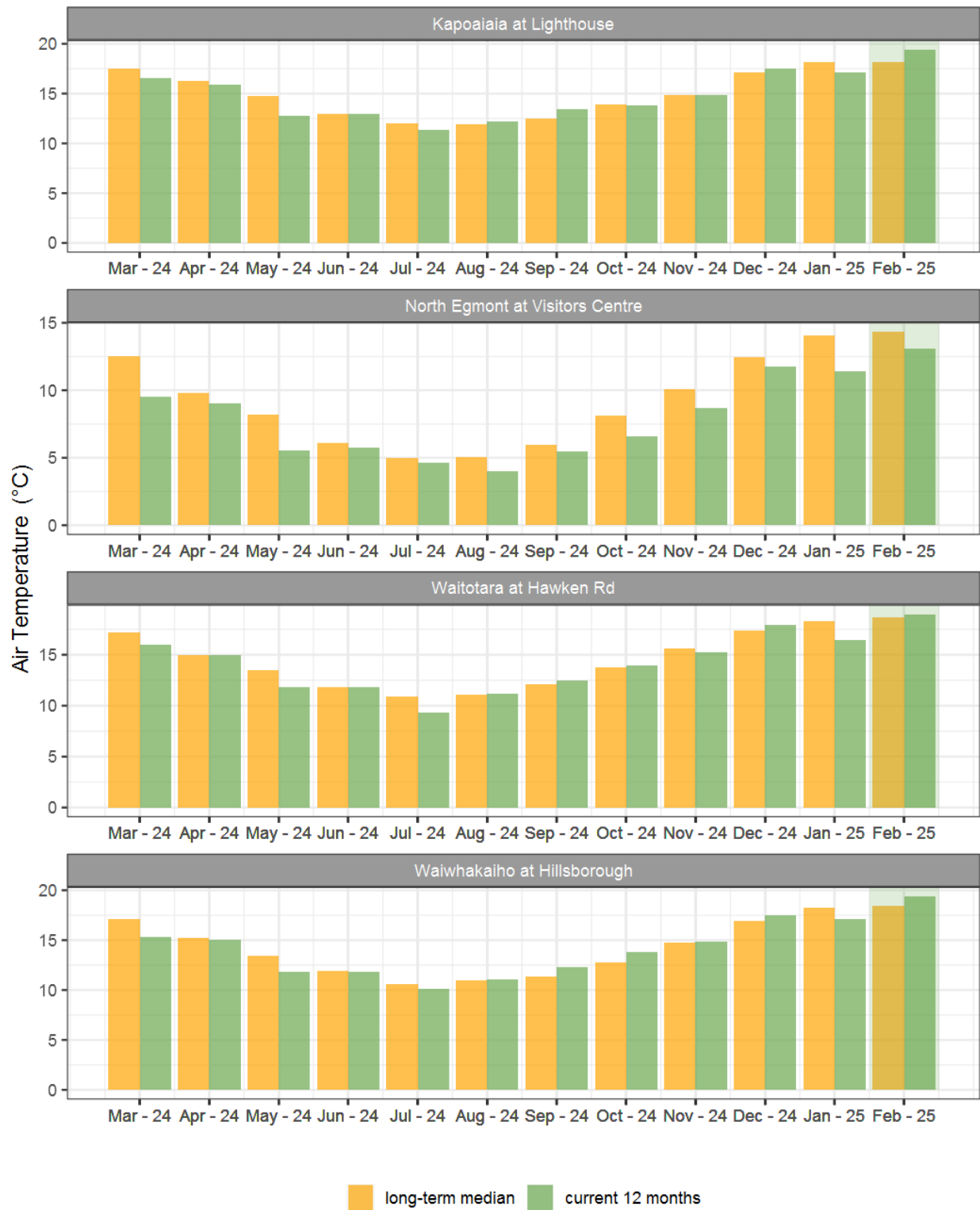
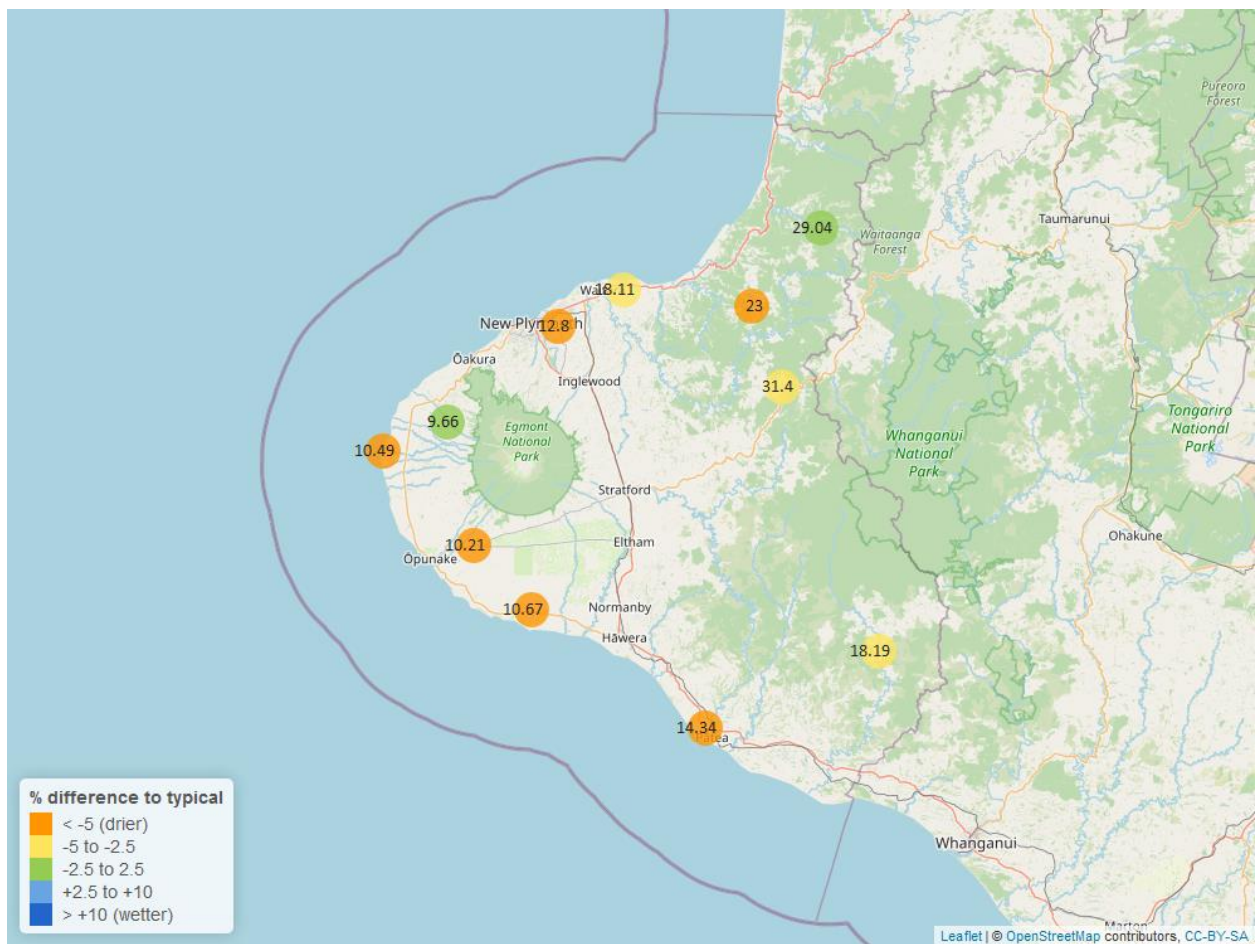


Figure 4.2: Monthly mean air temperature for February and the mean of all previously recorded months.

## 5. Soil Moisture

Map 5: February mean soil moisture content (%).



**Table 5: Summary of high, low and mean soil moisture for February and for February in all preceding years of record.**

February 2025 - Soil Moisture (%)								
	Highs		Lows		Mean			
Site	current month	historic	current month	historic	current month	historic	February maximum	Data years
Kapoaiaia at Lighthouse	11.63	28.09	10.17	9.41	10.49	17.56	11.71	13
Kaupokonui at Glenn Rd	11.38	31.87	10.40	9.09	10.67	17.90	11.47	13
Kotare at OSullivans	32.08	42.23	24.97	20.67	29.04	31.50	32.89	13
Motunui M39 at Weston W3	19.33	29.94	17.70	11.47	18.11	22.92	19.41	11
Patea at Bore 3	14.42	29.55	14.02	14.27	14.34	24.58	14.46	8
Pohokura Saddle	33.42	43.83	27.12	15.84	31.40	34.22	34.37	10
Stony at Mangatete Bridge	10.23	18.33	7.55	3.62	9.66	11.46	10.34	9
Taungatara at Eltham Rd	11.30	35.07	10.00	12.64	10.21	20.68	11.34	11
Uruti at Kaka Rd	26.71	42.16	16.12	17.29	23.00	33.94	27.26	13
Waitotara at Rimunui Station	21.64	28.03	16.80	14.89	18.19	21.77	21.78	8
Waiwhakaiho at Hillsborough	16.28	27.81	11.95	11.86	12.80	19.81	16.62	12

## 5.2 Long-term data patterns



Figure 5.1: Running average soil moisture for selected sites, set in context of the historic record.

### 5.3 Monthly Bar Charts

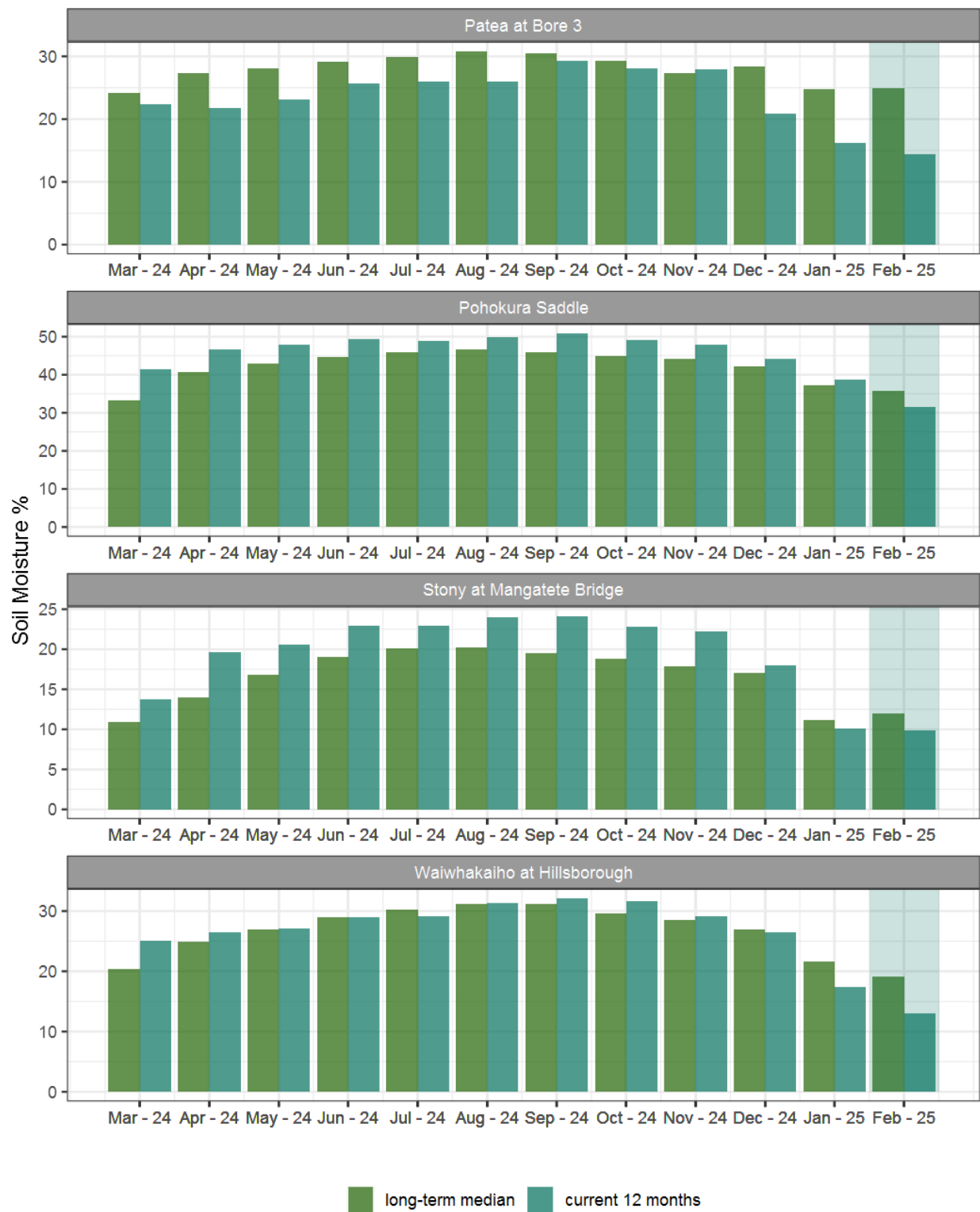
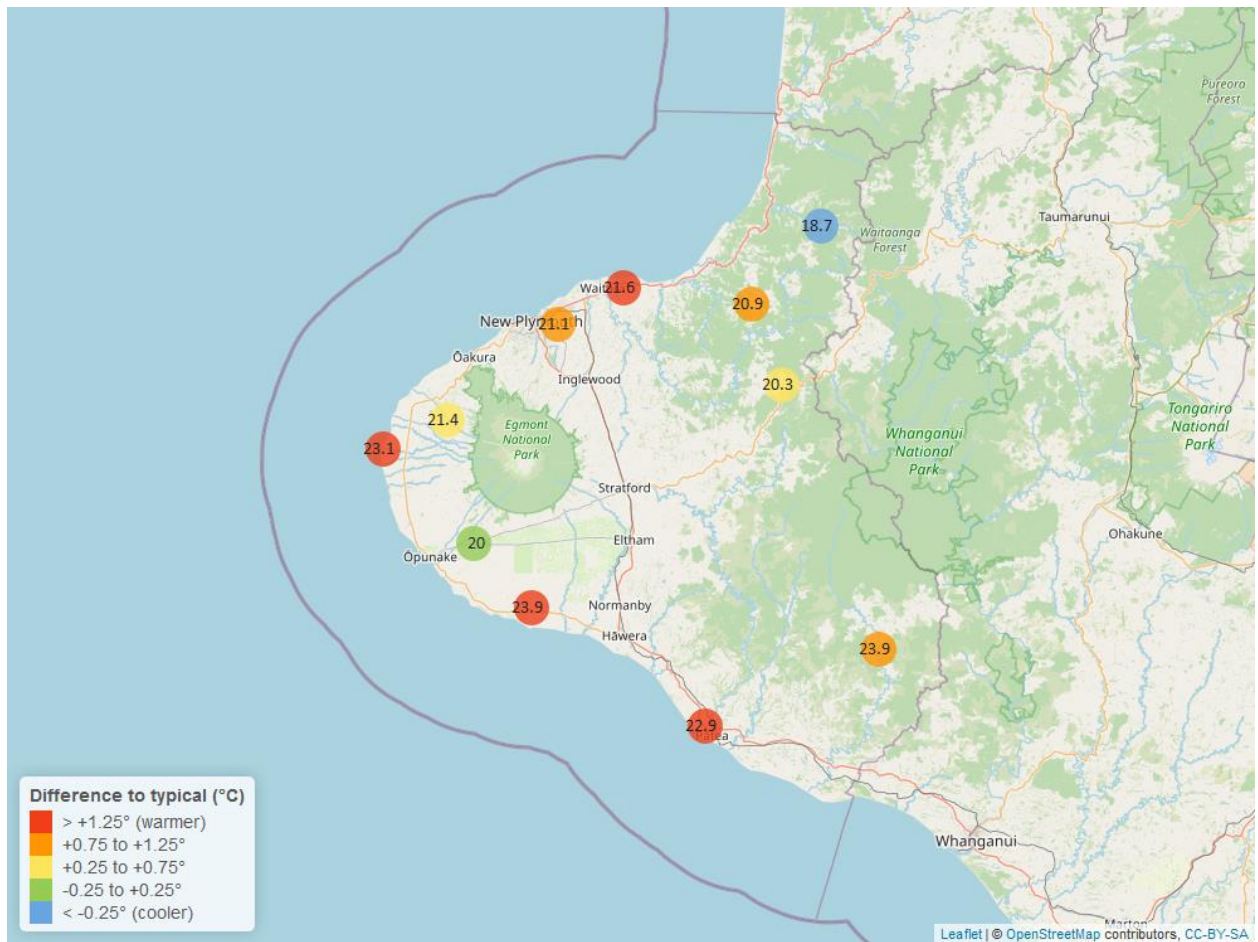


Figure 5.2: Monthly mean soil moisture for this month and the mean of all previously recorded months.

## 6. Soil Temperature

Map 6: February mean soil temperatures with difference to long-term mean (°C).



**Table 6: Summary of high, low and mean soil temperature for February and for February in all preceding years of record.**

February 2025 - Soil Temperatures (°C)								
	Highs		Lows		Mean			
Site	current month	historic	current month	historic	current month	historic	February maximum	Data years
Kapoaiaia at Lighthouse	26.56	24.47	20.64	18.75	23.1	21.16	27.30	13
Kaupokonui at Glenn Rd	25.83	23.89	21.76	18.10	23.9	20.11	26.39	13
Kotare at OSullivans	19.27	22.35	17.49	17.44	18.7	19.47	19.41	13
Motunui M39 at Weston W3	22.57	21.64	20.02	17.18	21.6	19.30	22.74	11
Patea at Bore 3	24.60	25.01	21.02	17.98	22.9	20.77	25.10	8
Pohokura Saddle	21.40	21.97	18.63	17.89	20.3	19.99	21.70	10
Stony at Mangatete Bridge	23.23	24.10	18.84	18.07	21.4	20.79	23.60	8
Taungatara at Eltham Rd	21.59	22.49	18.41	17.30	20.0	19.91	22.40	11
Uruti at Kaka Rd	21.42	22.14	19.90	18.10	20.9	20.14	21.56	13
Waitotara at Rimunui Station	26.73	25.94	21.20	20.38	23.9	23.03	27.67	7
Waiwhakaiho at Hillsborough	22.24	22.41	19.74	18.16	21.1	20.22	22.61	12

## 6.2 Long-term data patterns



Figure 6.1: Running average soil temperature for selected sites, set in context of the historic record.

## 6.3 Monthly Bar Charts

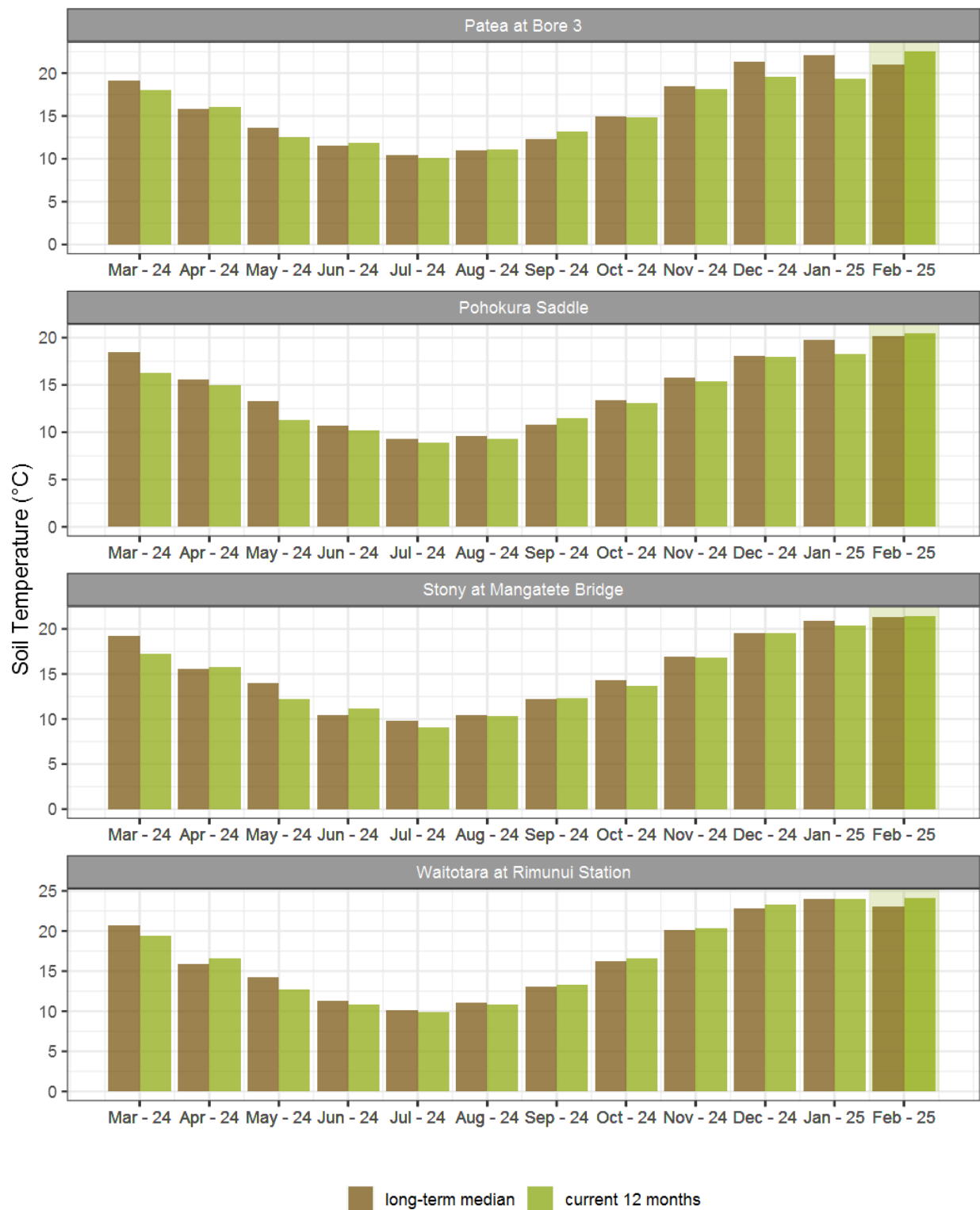
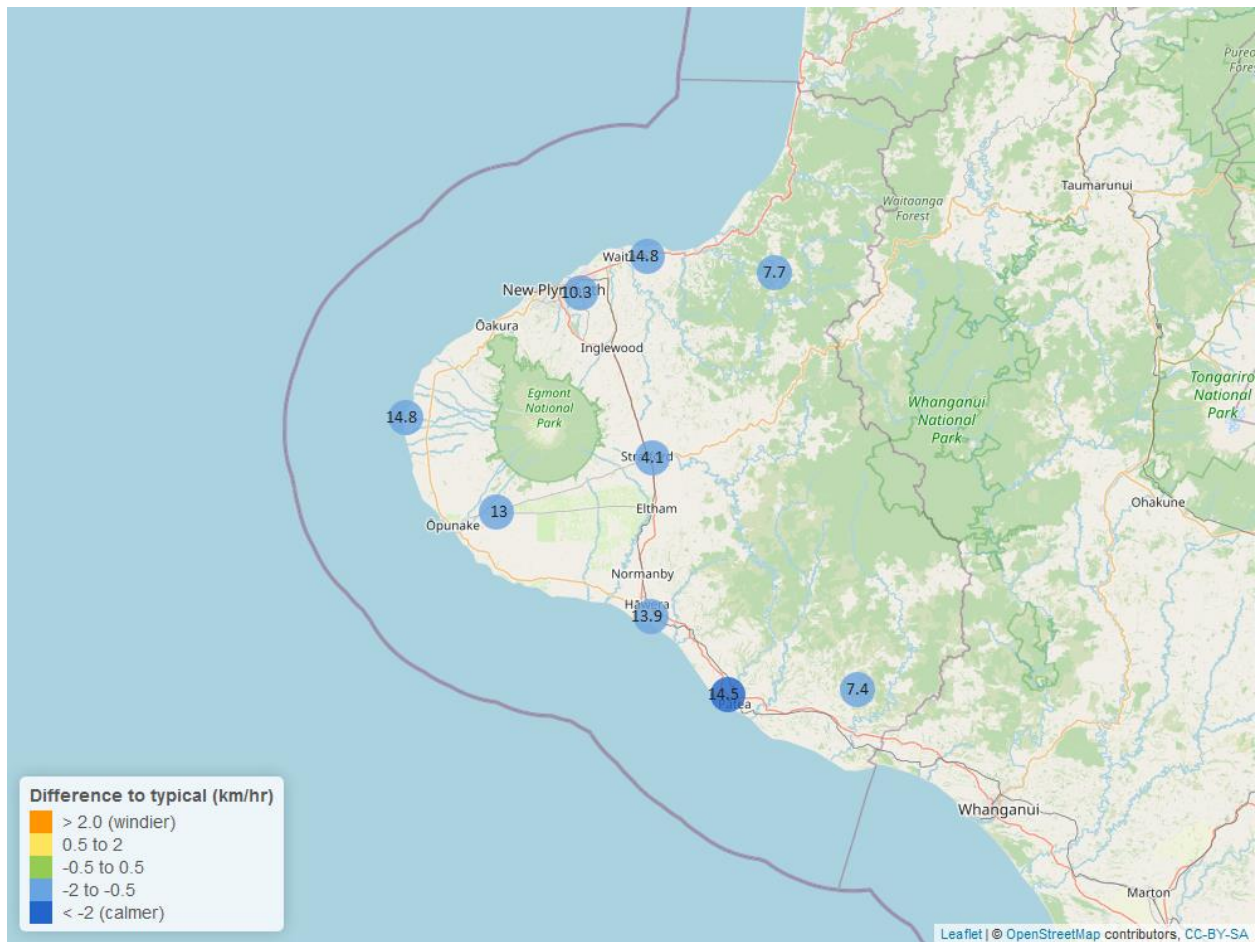


Figure 6.2: Monthly mean soil temperature for this month and the mean of all previously recorded months.

## 7. Wind Speed and Maximum Gusts

Map 7: February mean of wind speed with difference to long-term values (km/hr).



**Table 7: Summary of high, low and mean wind speed for February and for February in all preceding years of record.**

February 2025 - Wind Speed (average) - (km/hr)								
	Highs		Lows		Mean			
Site	current month	historic	current month	historic	current month	historic	February maximum	Data years
Hawera AWS	31.48	34.26	5.14	3.70	13.9	15.74	39.82	20
Kapoaiaia at Lighthouse	32.72	38.79	5.21	5.39	14.8	16.06	40.57	24
New Plymouth AWS	33.34	36.11	6.48	4.63	14.8	15.74	41.67	17
Patea at Bore 3	31.23	37.22	5.43	5.81	14.5	17.28	41.23	9
Patea at Stratford	13.44	15.79	1.53	1.77	4.1	5.46	21.43	19
Taungatara at Eltham Rd	27.00	33.76	5.79	6.26	13.0	14.42	39.64	9
Uruti at Kaka Rd	19.36	21.22	2.29	3.15	7.7	8.41	28.81	28
Waitotara at Ngutuwera	17.61	20.74	2.05	1.59	7.4	8.43	24.02	26
Waiwhakaiho at Hillsborough	23.13	30.90	3.97	3.81	10.3	11.61	33.20	7

**Table 8: Summary of high, low and maximum wind gusts for February and for February in all preceding years of record.**

February 2025 - Wind Gusts (Maximum) - (km/hr)								
	Highs		Lows		Mean			
Site	current month	historic	current month	historic	current month	historic	February maximum	Data years
Hawera AWS	59.26	64.82	27.78	24.08	40.7	40.74	61.12	20
Kapoaiaia at Lighthouse	52.92	77.40	19.08	19.70	36.4	40.00	52.92	22
New Plymouth AWS	57.41	68.52	24.08	24.08	37.0	38.89	64.82	17
Patea at Bore 3	57.70	71.20	26.20	23.20	37.7	43.50	63.20	8
Patea at Stratford	52.20	54.70	17.64	19.44	22.3	29.80	53.28	18
Taungatara at Eltham Rd	60.50	77.40	30.30	24.40	36.5	38.50	67.70	9
Uruti at Kaka Rd	57.24	66.10	24.48	22.30	36.7	31.32	65.16	26
Waitotara at Ngutuwera	64.44	65.88	25.92	20.50	36.0	35.64	76.68	25
Waiwhakaiho at Hillsborough	53.40	73.60	22.00	22.60	34.8	37.10	55.20	7

## 7.2 Long-term data patterns

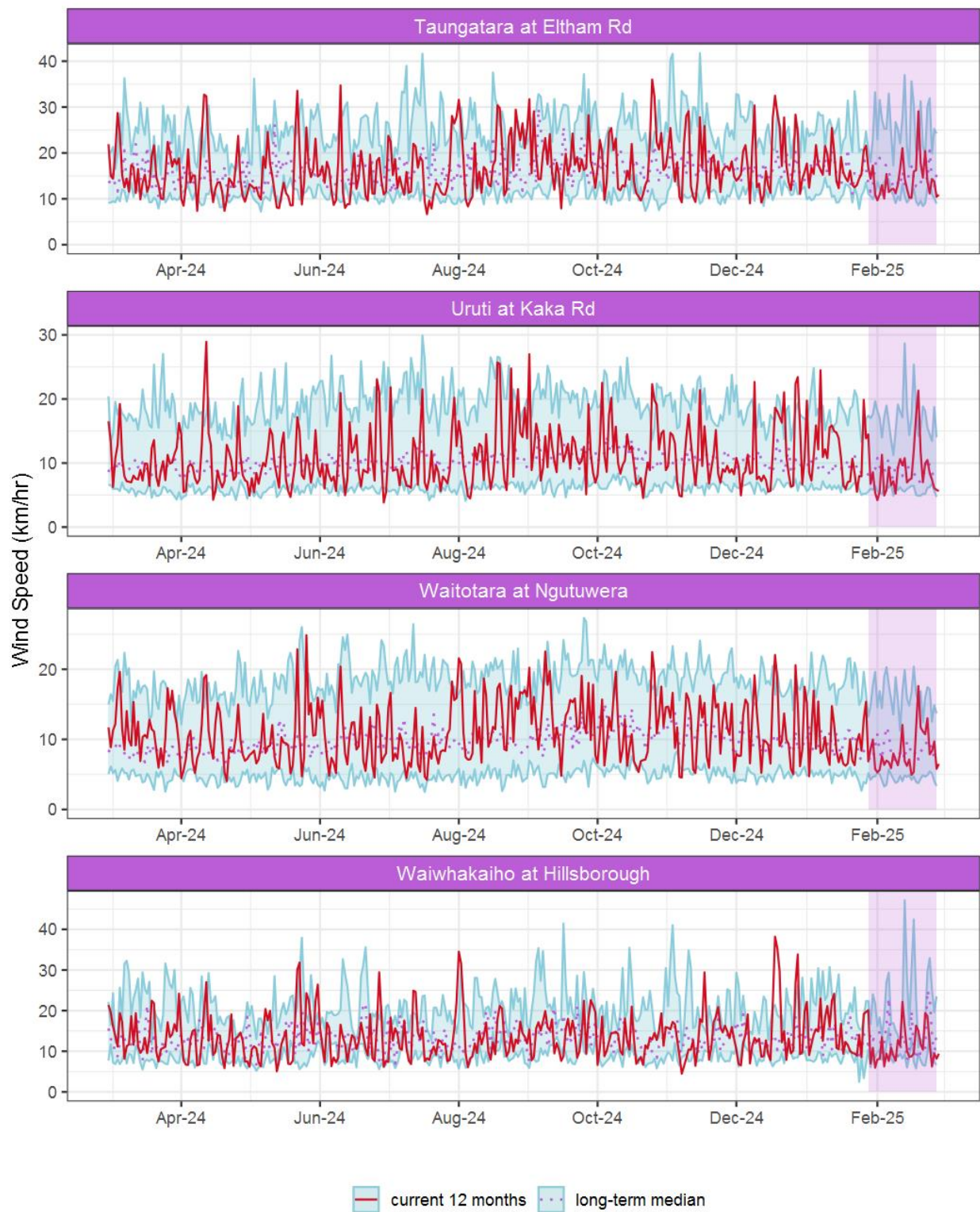


Figure 7.1: Running average wind speed (km/hr) for selected sites, set in context of the historic record.

### 7.3 Monthly Bar Charts

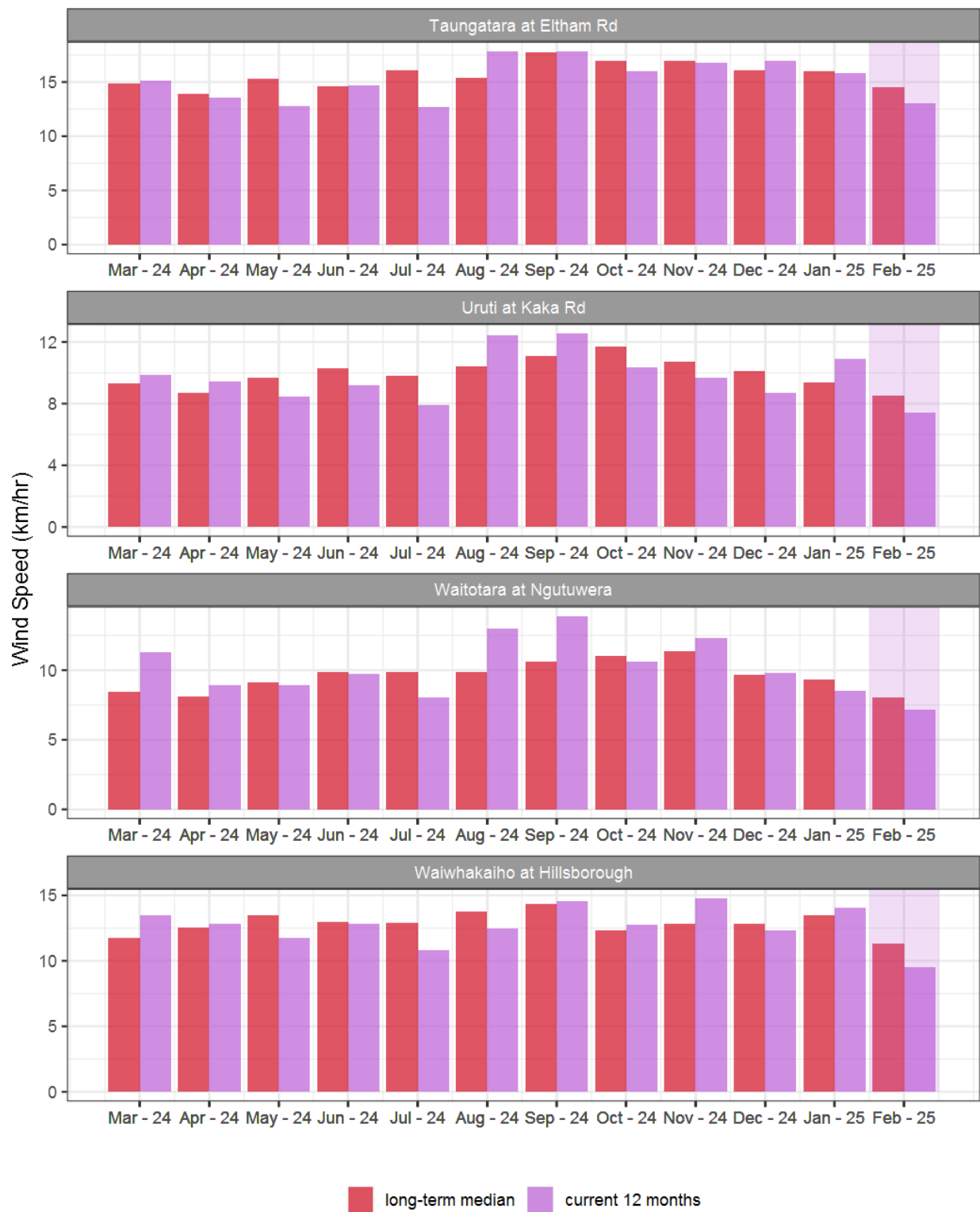


Figure 7.2: Monthly mean wind speed (km/hr) for selected sites, relative to the mean of all previously recorded months.

## 7.4 Wind roses for February 2025

### Average windspeed

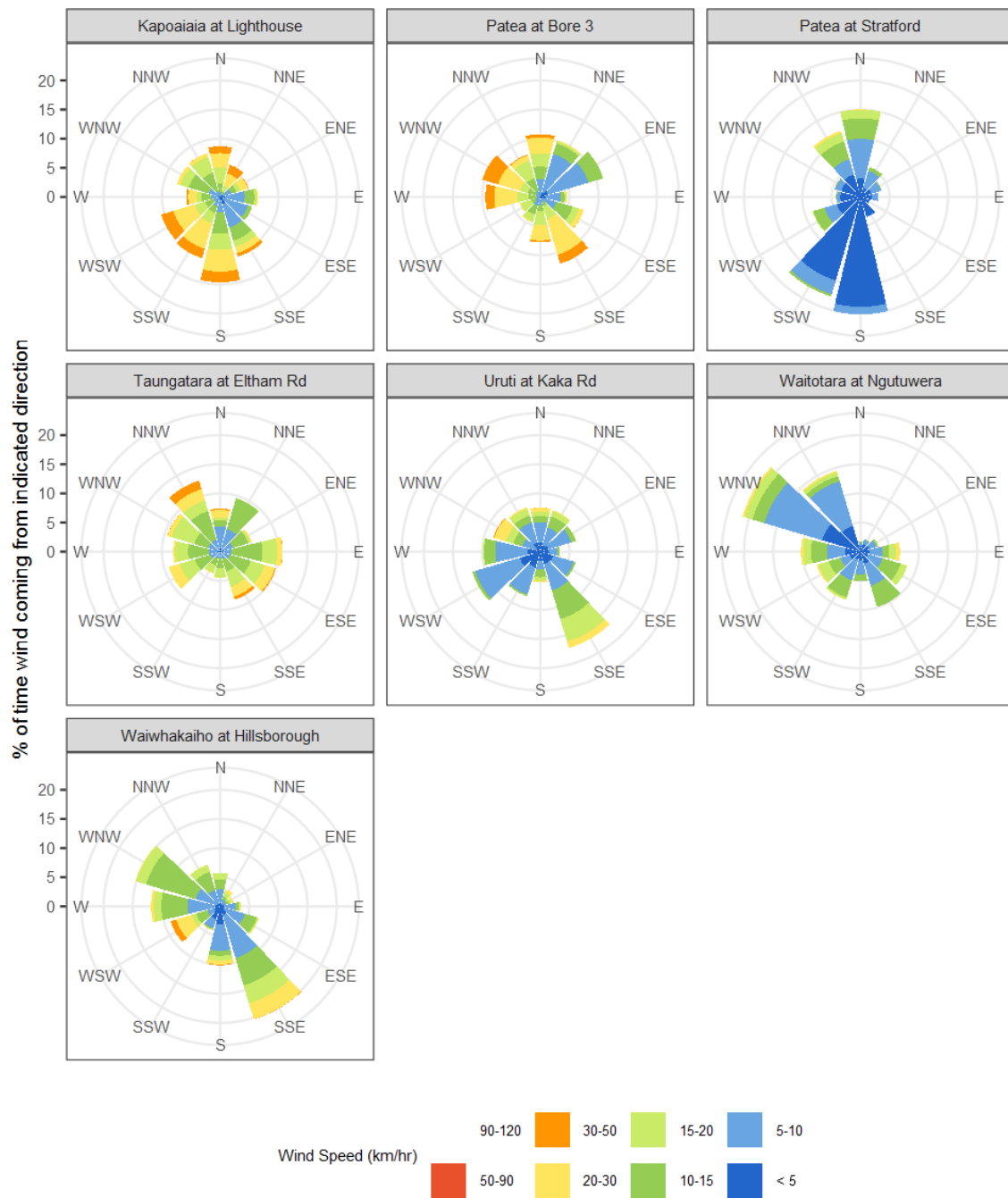


Figure 7.3: Wind roses for February for average wind speed (km/hr).

## Maximum gust strength

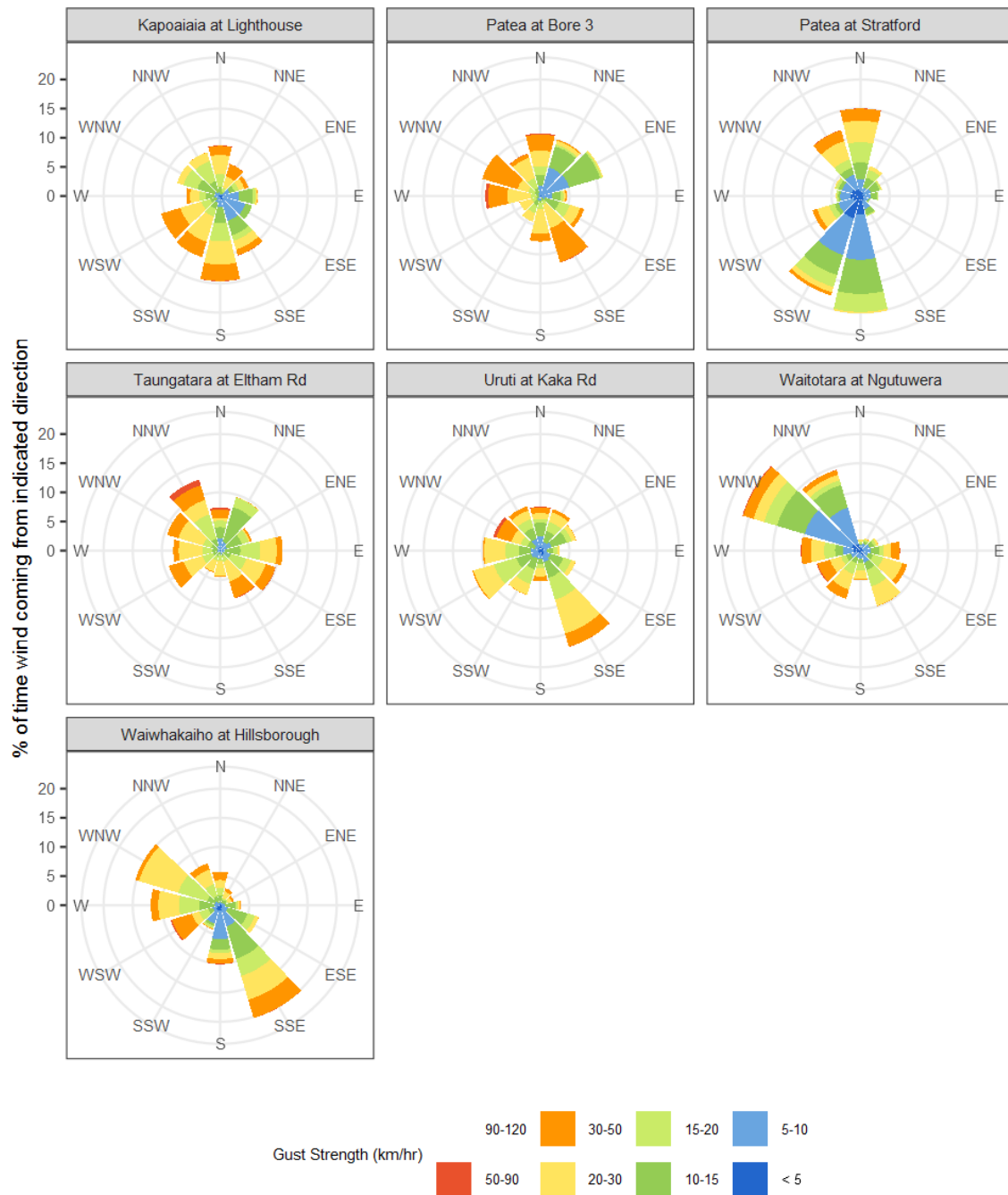


Figure 7.4: Wind roses for February for maximum wind gust (km/hr).

## Summary of month's conditions

### Rainfall

On average February rainfall was 60.8mm, 75% less than usual, ranging from 97% less at Waitotara at Hawken Rd, and 42% less at Pohokura Saddle.

Year-to-date rainfall is lowest at Kaupokonui at Glenn Rd with 72% less rainfall than normal, Omahine at Moana Trig has had the highest year-to-date rainfall with 33% less than normal, on average there has been 57% less than normal across all rain gauges. Compared to typical full year totals, on average sites have already received 5% of a typical year's rainfall, with the highest value at Omahine at Moana Trig, 8% of normal, whereas Kaupokonui at Glenn Rd sits at 3% of the typical years total.

### River Flow

Mean river flows for February were 42.7% lower than typical values, low flows were 8.1% lower, and high flows 82.6% lower than typical values. The maximum river flow recorded in February was 46.2m<sup>3</sup>/sec at Patea at McColls Bridge on 10 February.

### River Water Temperature

Mean river (non-mountain) water temperatures were 19°C, an average of 0.9°C warmer than long-term February values. Nighttime-low water temperatures were on average 1.7°C warmer than historic lows, and day-time high temperatures were on average 0.1°C warmer than historic highs. The maximum river water temperature recorded was 26.1°C at Warea at Coast on 8 February.

### Air Temperature

The average air temperature for the region (excluding Te Maunga sites) was 18°C, which is 0.5°C warmer than long-term February averages. Low air temperatures for February were on average 1°C warmer than the February average for previous years. Day-time high temperatures were on average 0.1°C warmer than historic highs. The maximum air temperature recorded was 28.8°C at Inglewood at Oxidation Ponds on 7 February.

### Soil Moisture

The average soil moisture for February across sites in Taranaki region was 17.1%. Soil moistures were on average 6.2% drier than typical February values. On average, low soil moistures were 2.3% wetter than previous lows, and the highs were on average 13.5% drier than previous values for February.

### Soil Temperature

February soil temperatures were generally 1.2°C warmer than long-term averages. Average nighttime low soil temperatures were 1.7°C warmer than recorded lows, and upper day-time soil temperatures were on average 0.1°C cooler than long-term February highs. The

maximum soil temperature recorded in February was 27.7°C at Waitotara at Rimunui Station, on 7 February.

### Wind Speed (average and 10 minute gust)

February average wind speeds were 11.2km/hr, with average gust strength of 35.4km/hr, these were 1.4km/hr lighter, and 1.9km/hr weaker than the long-term average. Average calm weather wind speeds were 0.2km/hr stronger than recorded lows, and windy conditions were on average 4.4km/hr lighter than long-term February highs. The maximum wind gust recorded was 76.7km/hr at Waitotara at Ngutuwera on 21 February.

Report date: 6 March 2025.

### Supply of environmental data - General terms and conditions

The enclosed information is the highest quality data the Taranaki Regional Council (the Council) is currently able to provide. Some or all of the data being provided may not yet have been audited however, and is therefore subject to change.

As we endeavour to continuously improve our products, we also reserve the right to further amend data where necessary and without notice at any time. As a result, the information supplied to you now may not be the same as that subsequently produced for you or any other requestor.

While the Council has exercised all reasonable skill and care in controlling the contents of the information, you should independently check the information provided if the accuracy of that information is important to you.

Under no circumstances will the Council, its employees or agents be liable in contract, tort or otherwise to compensate you for any loss, injury or damage (including loss of profits or consequential loss) arising directly or indirectly from the supply by the Council or its agents of inadequate, inaccurate or incorrect environmental data.

Any use of the material supplied, for example, by inclusion in a report or a media release, should be accompanied by an acknowledgment of the source of the data. We also request that any outputs generated through the use of the information provided be provided to the Council.