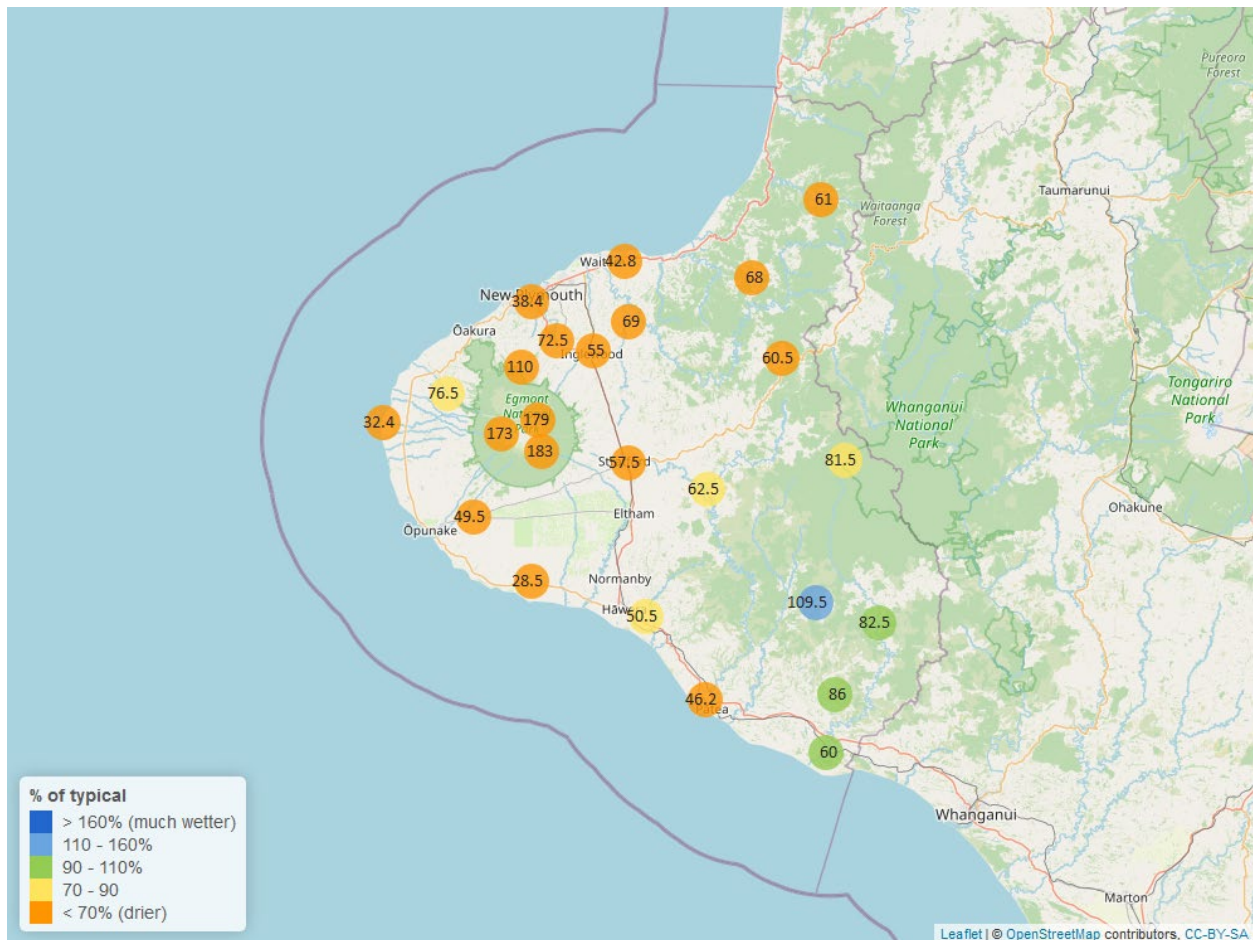


Taranaki Regional Council Monthly Rainfall and Environmental Data Report for January 2025

Note: The data presented here are provisional data only and may change as a result of quality control at a later date.

1. Rainfall

Map 1: January total rainfall (mm) and percentage of long-term mean (colour key).



Note: The year-to-date thematic rainfall map have been removed from this report, as it is identical to the January total rainfall map included above.

Table 1: Rainfall January and year-to-date totals for rain gauge sites in Taranaki.

	January			Year to Date			
Rain gauge	# days with rain	Total rain (mm)	% of typical month	Total to date (mm)	% of typical year to date	% of typical full year	Records Began
North Egmont at Visitors Centre	9	179.0	49.5	179.0	49.5	2.6	1995
Dawson Falls	12	183.0	53.9	183.0	53.9	2.9	1999
Kapoaiaia at Kahui Hut	10	173.0	58.5	173.0	58.5	3.3	2006
Mangorei Upper at Forest Hill	7	110.0	65.2	110.0	65.2	3.0	2018
Waiwhakaiho at Hillsborough	4	49.5	51.7	49.5	51.7	2.7	2013
Brooklands Zoo at New Plymouth	3	38.4	48.5	38.4	48.5	2.4	2012
Motunui M39 at Weston W3	5	42.8	48.7	42.8	48.7	2.7	1999
Waiwhakaiho at Egmont Village	6	72.5	58.9	72.5	58.9	3.0	1995
Manganui at Everett Park	3	69.0	60.7	69.0	60.7	3.3	1995
Inglewood at Oxidation Ponds	4	55.0	43.4	55.0	43.4	2.3	2000
Stony at Mangatete Bridge	4	76.5	71.5	76.5	71.5	3.8	2004
Kapoaiaia at Lighthouse	4	32.4	44.6	32.4	44.6	2.4	1999
Taungatara at Eltham Rd	5	49.5	57.4	49.5	57.4	3.2	2005
Kaupokonui at Glenn Rd	4	28.5	41.2	28.5	41.2	2.5	1998
Patea at Stratford	6	57.5	57.6	57.5	57.6	2.9	1999
Mangaehu at Bridge	7	62.5	75.9	62.5	75.9	3.9	1999
Kotare at OSullivans	6	61.0	43.7	61.0	43.7	2.8	1998
Uruti at Kaka Rd	5	68.0	54.4	68.0	54.4	3.1	1995
Pohokura Saddle	6	60.5	55.5	60.5	55.5	3.0	1995
Omaru at Charlies	7	81.5	79.3	81.5	79.3	4.5	2006
Omahine at Moana Trig	10	109.5	115.9	109.5	115.9	6.5	2007

	January			Year to Date			
Rain gauge	# days with rain	Total rain (mm)	% of typical month	Total to date (mm)	% of typical year to date	% of typical full year	Records Began
Waitotara at Rimunui Station	6	82.5	104.8	82.5	104.8	6.0	1995
Waitotara at Ngutuwera	9	86.0	105.4	86.0	105.4	6.7	1999
Tawhiti at Duffys	5	50.5	81.2	50.5	81.2	4.6	1995
Patea at Bore 3	5	46.2	65.6	46.2	65.6	3.9	2006
Waitotara at Hawken Rd	5	60.0	92.7	60.0	92.7	5.2	2016

Notes: Low and high values in tables refer to the upper and lower 5th percentiles of the historic record for each site (except for wind gust and soil moisture which are the upper and lower 1st percentiles). Percentile values give a better indication of the general upper and lower range of the historic data against which to compare the current month. Start year (records began) shows the length of data used to compute historic highs, lows, and "typical values". Sites with a longer data record will generally provide a more reliable comparison to values in the current year.

1.2 Long-term data patterns

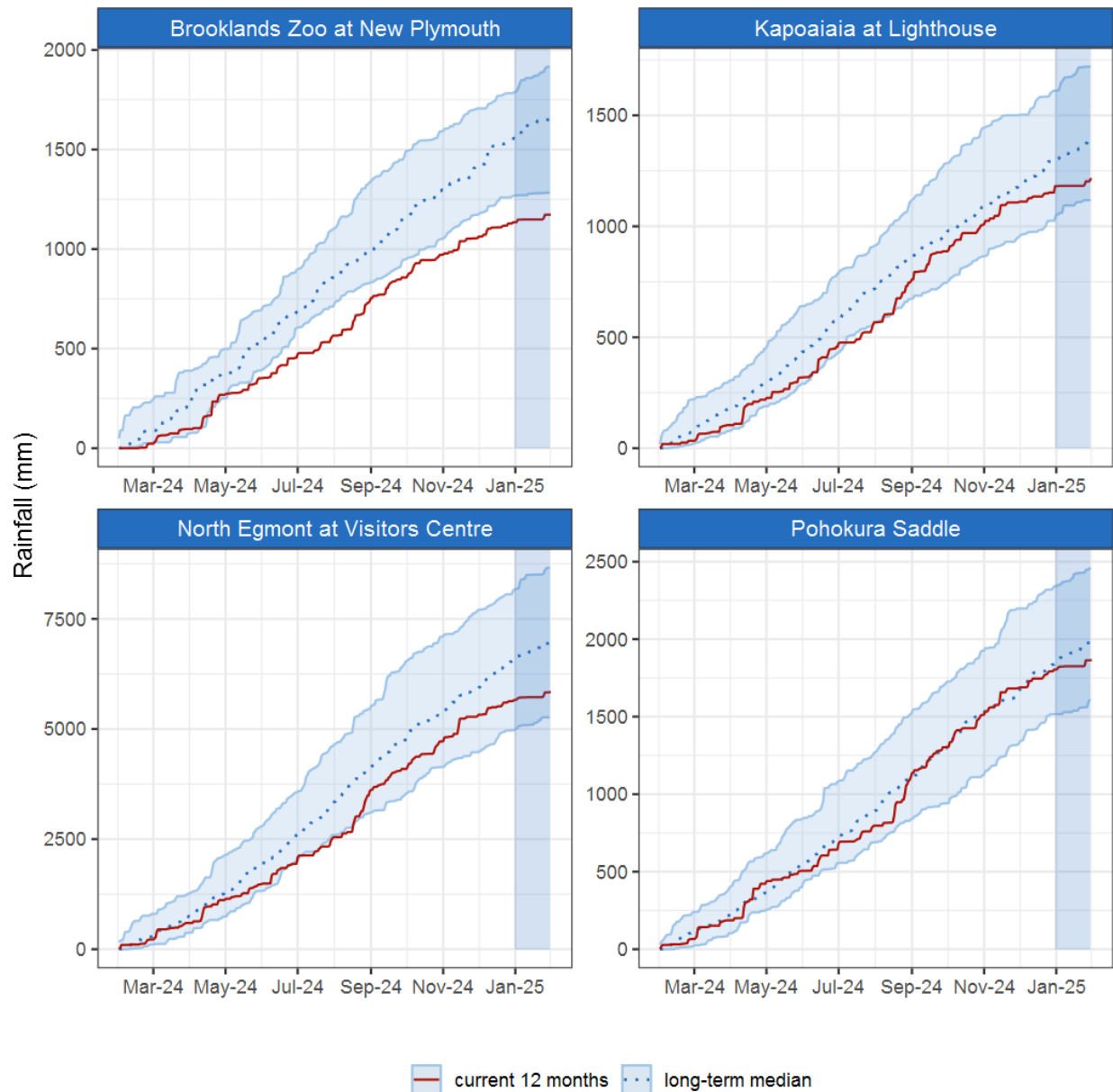


Figure 1.1: This year's and last year's data set in context of historic record at selected rain gauge sites in Taranaki.

1.3 Monthly Bar Charts

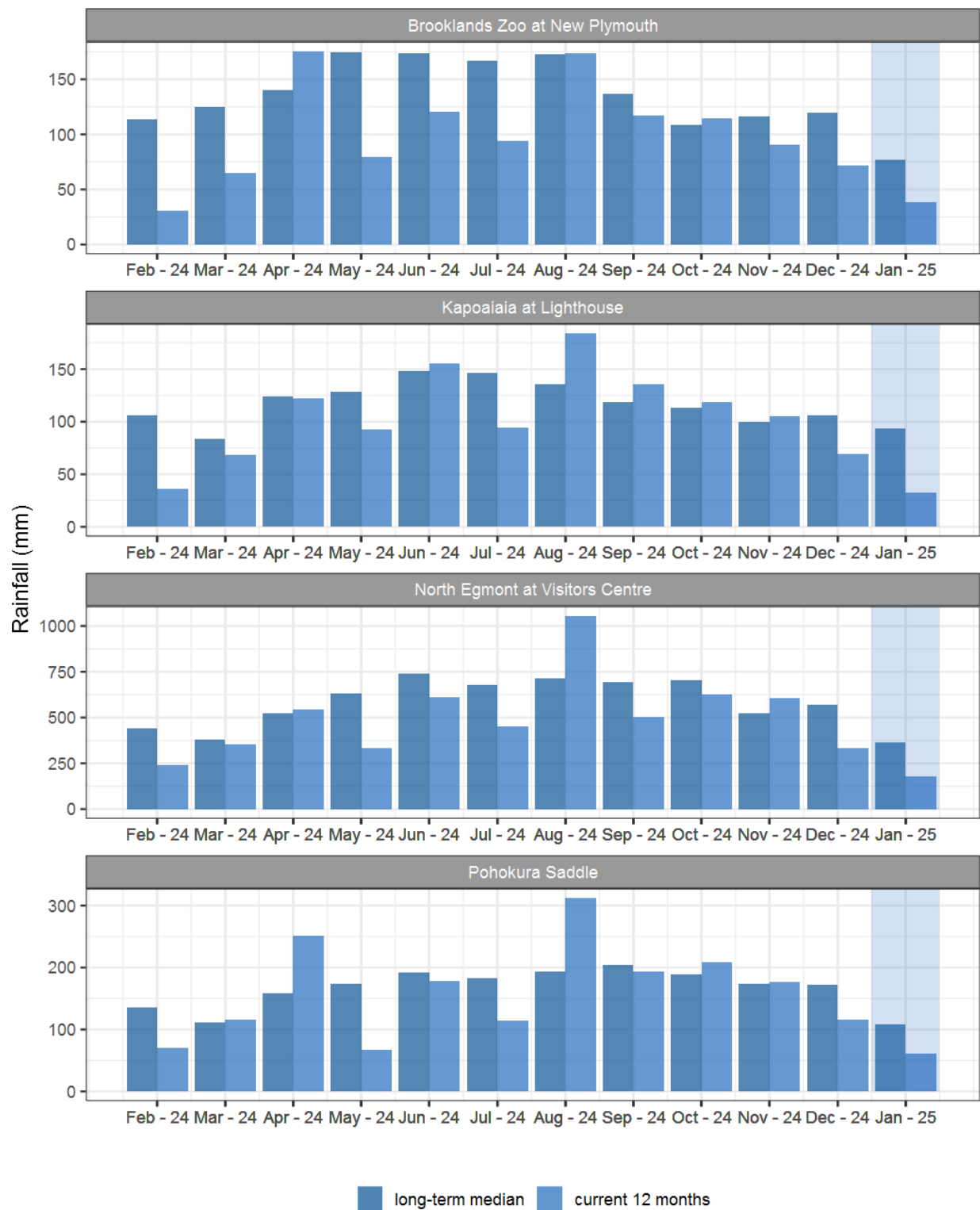


Figure 1.2: Monthly rainfall totals for this month and the mean of all previously recorded months.

2. River Flow

Map 2: January mean river flows (m3/sec), with difference as percentage of long-term mean.

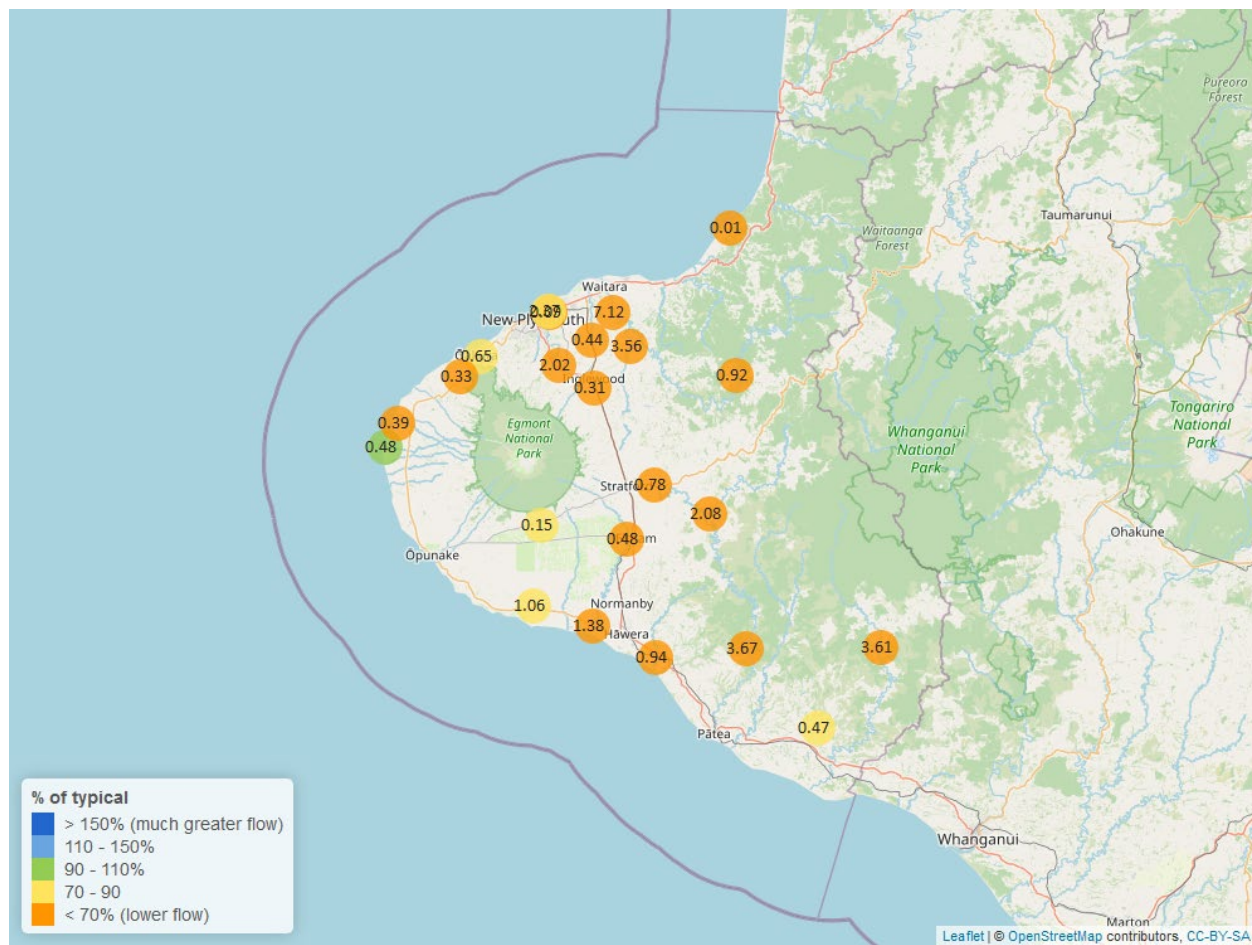


Table 2: Summary of high, low and mean flow for January and for January in all preceding years of record.

January 2025 - Recorded flows (m3/sec)								
	Highs		Lows		Mean			
River and Site	current month	historic	current month	historic	current month	historic	January maximum	Data years
Kapoaiaia at Lighthouse	0.59	1.70	0.46	0.28	0.48	0.47	1.08	38
Kaupokonui at Glenn Rd	1.40	4.51	0.89	0.78	1.06	1.26	7.00	46
Mangaehu at Bridge	4.69	22.72	1.82	2.24	2.08	4.21	18.30	46
Manganui at Everett Park	5.17	28.91	3.11	3.63	3.56	5.81	21.39	33
Mangaone 3 at Stub Rd	0.16	0.39	0.06	0.12	0.09	0.23	0.67	4
Mangawheroiti Above Intake W.W	0.18	0.59	0.14	0.15	0.15	0.19	0.86	12
Moumahaki at Johnston Rd	1.51	1.96	0.36	0.48	0.47	0.62	4.44	7
Ngatoro at SH3	0.45	2.35	0.27	0.27	0.31	0.45	2.61	35
Oakura at Victoria Rd	1.41	2.86	0.53	0.49	0.65	0.81	17.58	6
Patea at McColls Bridge	20.28	53.44	2.47	1.96	3.67	6.85	52.79	36
Patea at Skinner Rd	1.34	8.35	0.57	0.74	0.78	1.76	5.36	46
Tangahoe below Railway Bridge	2.53	5.50	0.73	1.10	0.94	1.69	13.55	7
Timaru at Tataraimaka	0.65	2.22	0.27	0.33	0.33	0.62	6.69	11
Waikaramarama at Bridge	0.03	0.17	0.01	0.01	0.01	0.01	0.51	6
Waingongoro at Eltham Rd	0.71	4.56	0.40	0.44	0.48	0.89	5.15	50
Waingongoro at SH45	2.15	10.67	1.15	1.39	1.38	2.63	6.32	44
Waiongana at SH3a	0.68	4.97	0.36	0.44	0.44	0.90	2.89	44
Waitara at Bertrand Rd	21.14	107.50	5.09	7.16	7.12	17.19	47.39	44
Waitara at Purangi Bridge	5.24	38.07	0.50	0.59	0.92	3.18	33.25	25
Waitotara at Rimunui Station	11.10	20.19	3.03	2.96	3.61	5.87	30.03	20
Waiwhakaiho at Egmont Village	4.17	15.36	1.85	1.96	2.02	3.08	27.74	44
Waiwhakaiho at Vickers Rd	8.67	16.87	1.79	1.99	2.37	3.27	58.14	5
Warea at Coast	0.78	1.08	0.31	0.35	0.39	0.58	1.38	8

2.2 Long-term data patterns

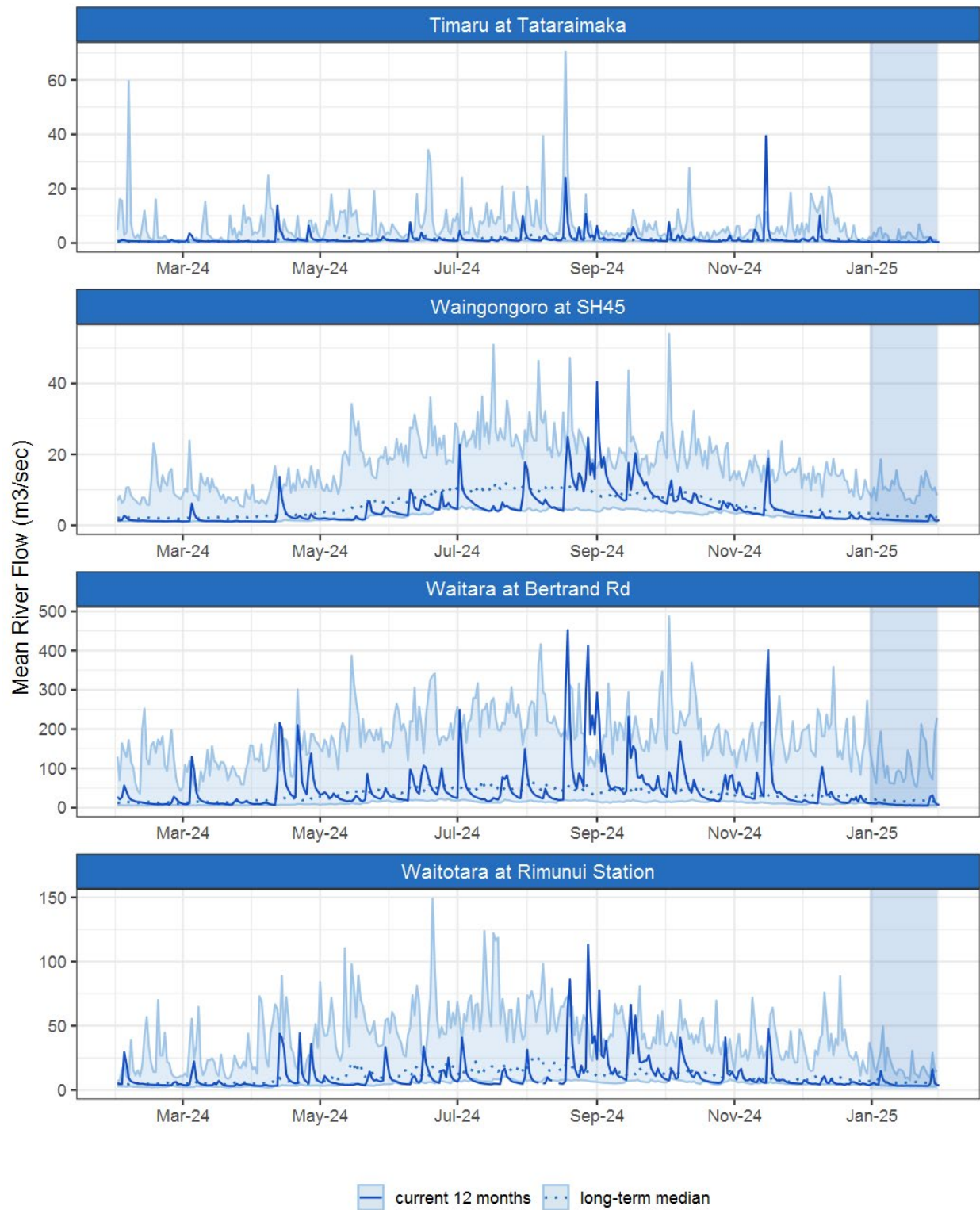


Figure 2.1: Running average river flows for selected sites, set in context of the historic record.

2.3 Monthly Bar Charts

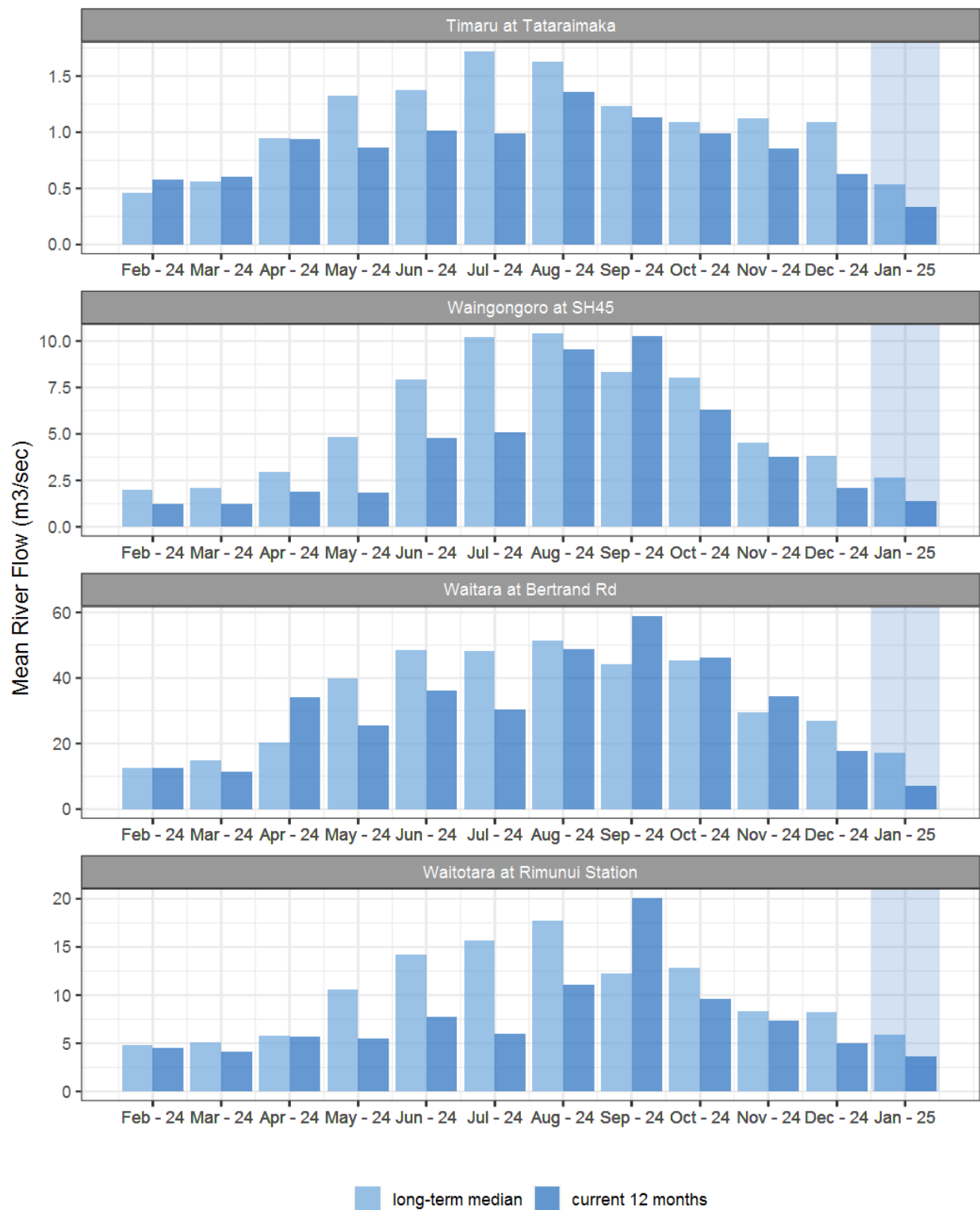


Figure 2.2: Monthly mean river flow for this month and the mean of all previously recorded months.

3. River Temperature

Map 3: January mean water temperature with difference to long-term mean (°C).

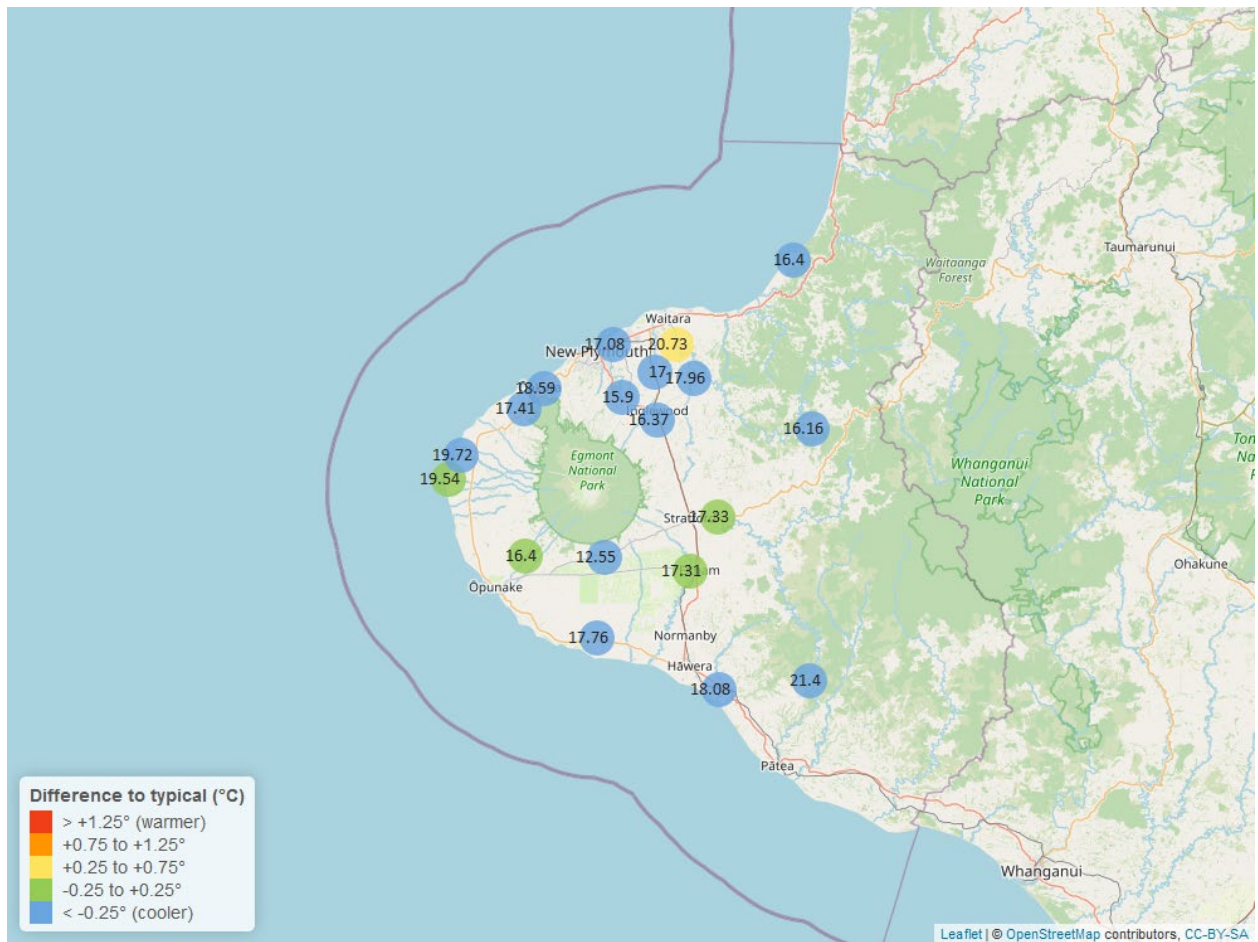


Table 3: Summary of high, low and mean river temperature for January and for January in all preceding years of record.

January 2025 - River Temperature (°C)								
	Highs		Lows		Mean			
River and Site	current month	historic	current month	historic	current month	historic	January maximum	Data years
Kapoaiaia at Lighthouse	23.57	24.36	15.99	15.79	19.54	19.62	26.30	26
Kaupokonui at Glenn Rd	21.48	24.32	15.61	15.31	17.76	19.50	21.97	35
Manganui at Everett Park	20.92	22.36	15.66	15.41	17.96	18.81	21.87	16
Mangaone 3 at Stub Rd	20.01	20.40	14.87	16.11	17.08	18.06	21.45	4
Mangawheroiti Above Intake W.W	14.90	16.17	10.80	10.96	12.55	13.24	16.42	12
Matau at Woolshed	18.80	21.98	13.38	13.91	16.16	17.02	20.88	7
Ngatoro at SH3	19.40	20.43	13.66	13.79	16.37	17.19	20.29	26
Oakura at Victoria Rd	22.64	22.72	15.90	15.36	18.59	19.19	24.38	6
Patea at McColls Bridge	23.73	24.62	19.07	19.06	21.40	21.94	24.31	9
Patea at Skinner Rd	20.69	21.21	14.64	14.10	17.33	17.36	21.65	21
Tangahoe below Railway Bridge	22.00	23.12	15.64	16.41	18.08	19.52	25.09	7
Timaru at Tataraimaka	20.72	21.31	15.16	14.05	17.41	17.80	22.55	11
Waiaua 2 at Barraclough Opua	21.85	22.10	12.50	12.63	16.40	16.56	23.94	6
Waikaramarama at Bridge	18.62	19.97	14.58	15.24	16.40	17.64	20.10	7
Waingongoro at Eltham Rd	20.65	21.70	14.62	14.00	17.31	17.48	22.17	20
Waiongana at SH3a	20.51	21.34	14.28	14.53	17.00	17.62	22.09	13
Waitara at Bertrand Rd	23.89	23.82	18.67	17.10	20.73	20.42	25.14	36
Waiwhakaiho at Egmont Village	19.18	19.91	12.91	13.13	15.90	16.40	20.39	32
Warea at Coast	23.84	25.12	15.89	16.10	19.72	20.47	25.72	6

3.2 Long-term data patterns

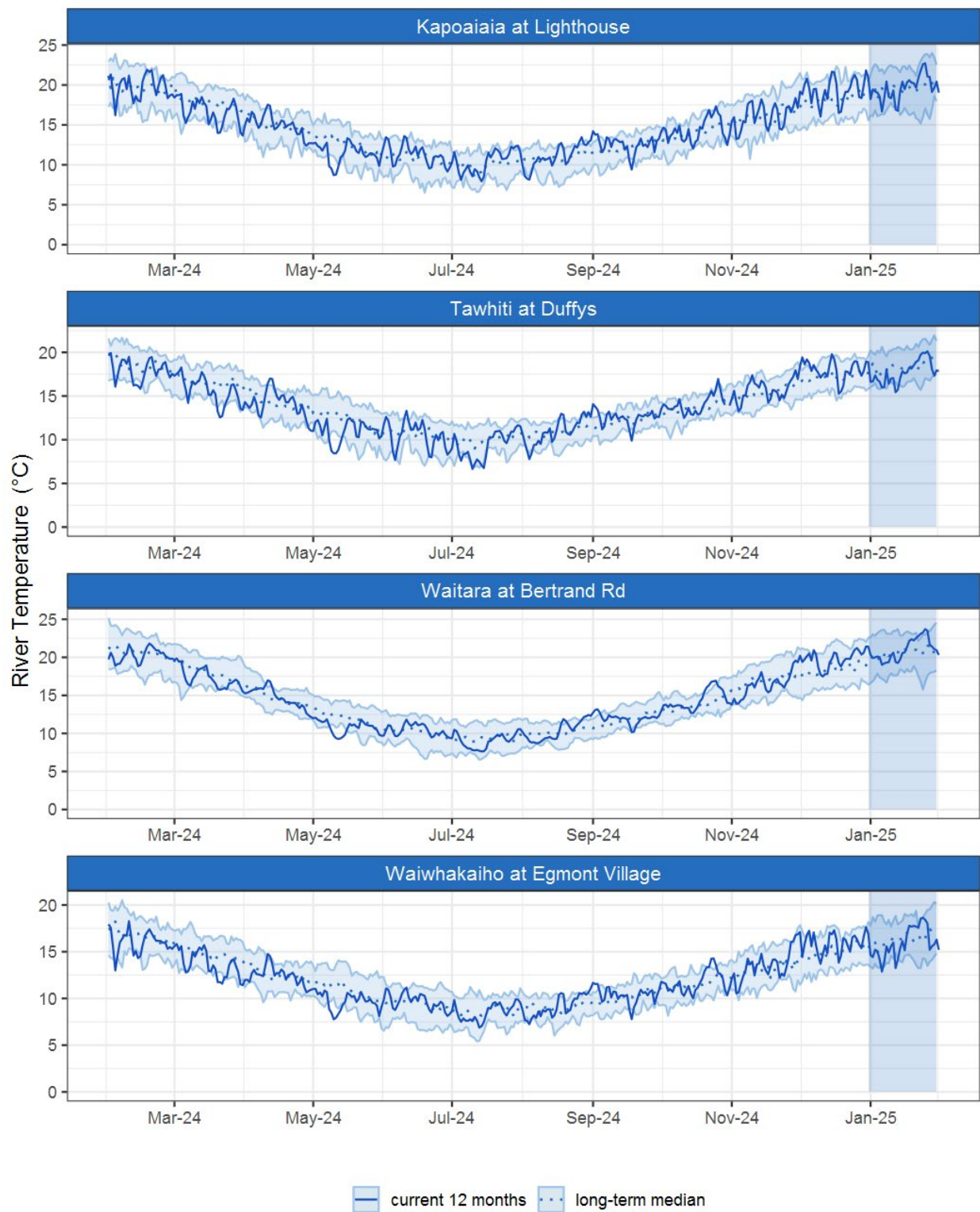


Figure 3.1: Running average river temperature for selected sites, set in context of the historic record.

3.3 Monthly Bar Charts

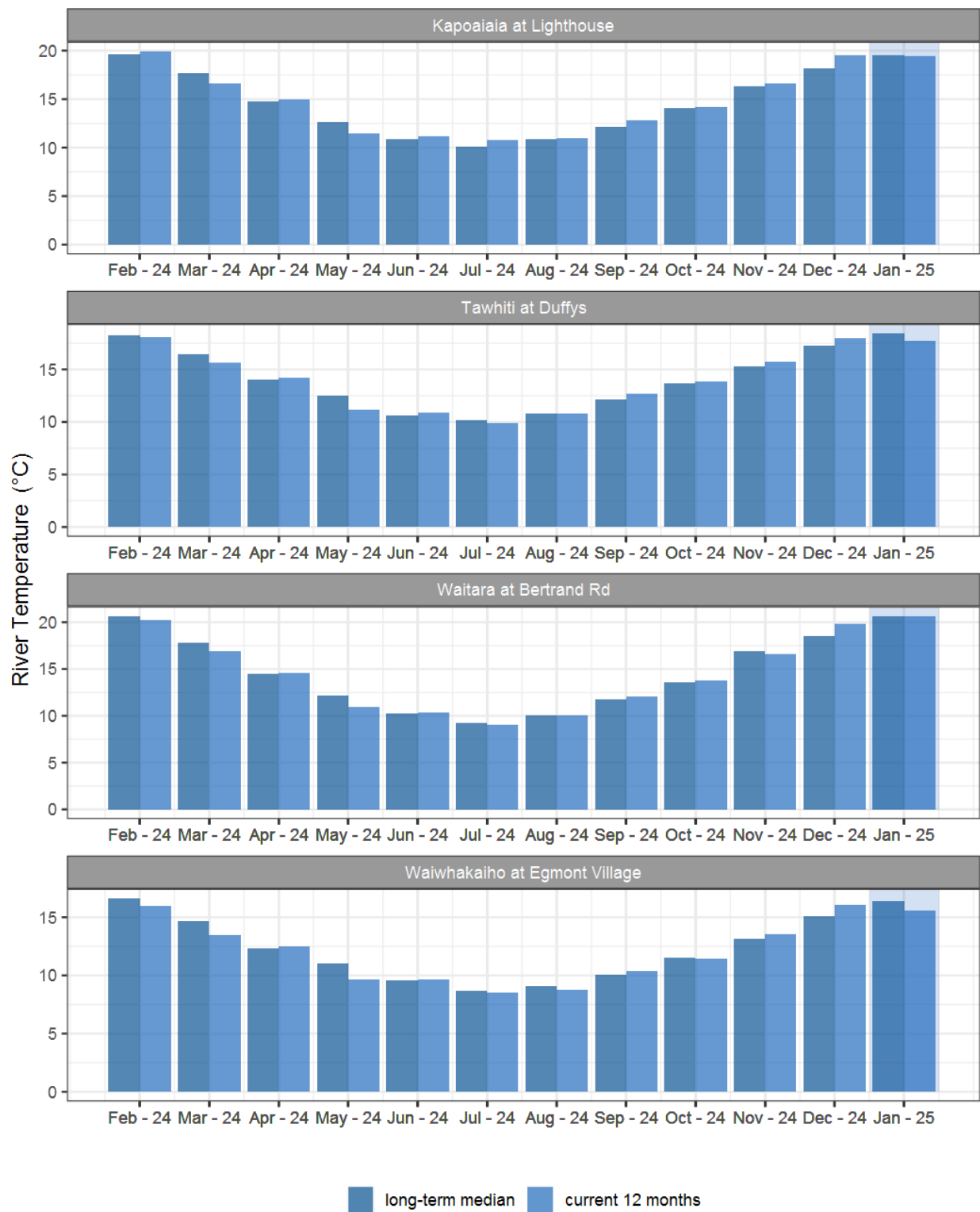


Figure 3.2: Monthly mean river temperature for this month and the mean of all previously recorded months.

4. Air Temperature

Map 4: January mean air temperature with difference to long-term mean (°C).

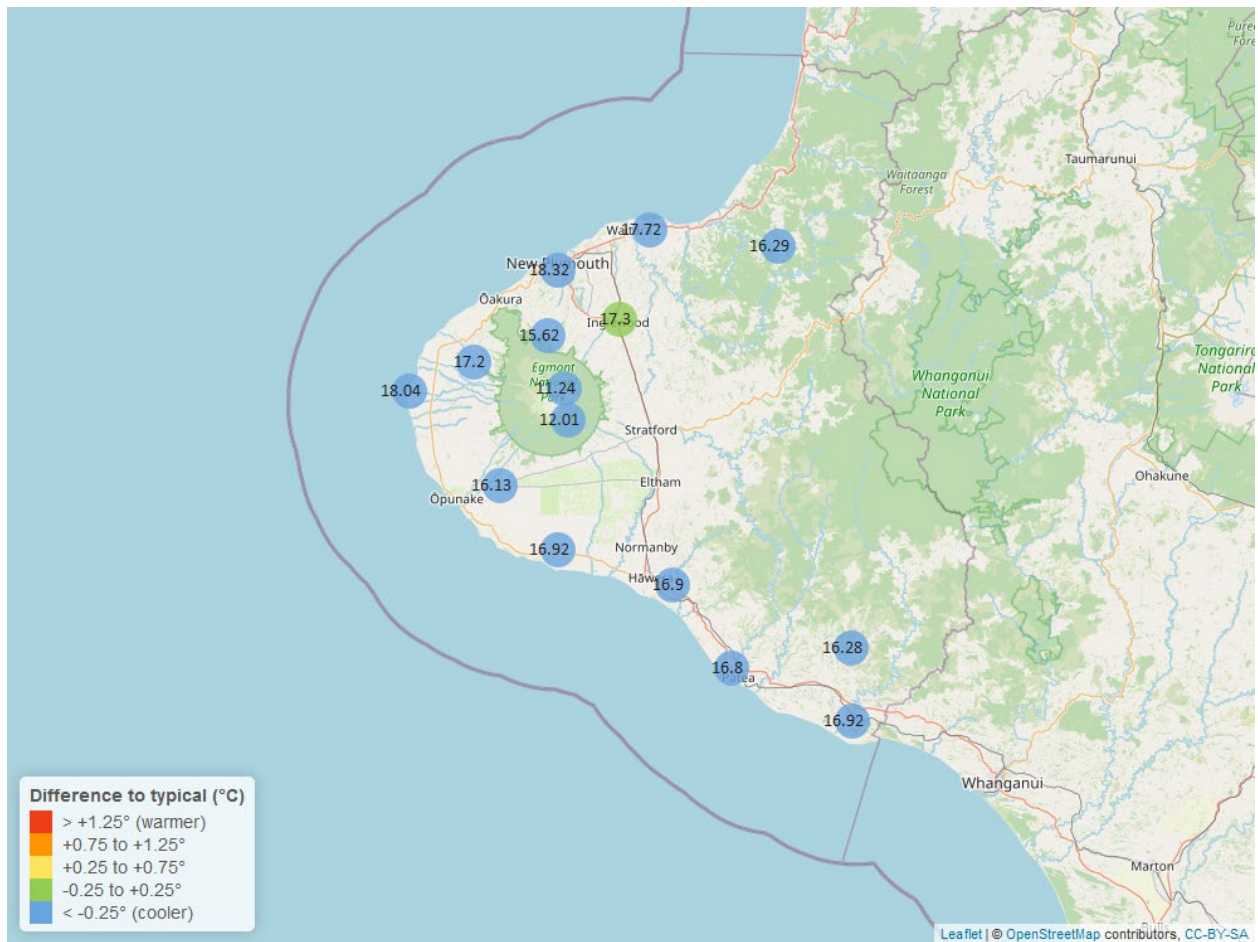


Table 4: Summary of high, low and mean air temperature for January and for January in all preceding years of record.

January 2025 - Air Temperature (°C)								
	Highs		Lows		Mean			
Site	current month	historic	current month	historic	current month	historic	January maximum	Data years
Brooklands Zoo at New Plymouth	24.96	25.52	12.84	12.94	18.32	18.90	28.85	12
Dawson Falls	17.71	20.62	6.94	7.53	12.01	14.04	20.60	9
Inglewood at Oxidation Ponds	25.16	25.24	11.79	10.98	17.30	17.48	27.86	13
Kapoaiaia at Lighthouse	21.69	22.40	13.06	13.60	18.04	18.36	25.06	12
Kaupokonui at Glenn Rd	21.86	23.82	11.80	12.27	16.92	18.24	27.47	10
Mangorei Upper at Forest Hill	21.23	22.73	10.62	11.78	15.62	17.14	24.70	7
Motunui M39 at Weston W3	22.94	23.39	11.82	12.70	17.72	18.40	25.73	8
North Egmont at Visitors Centre	16.83	20.15	6.43	8.13	11.24	13.89	19.48	10
Patea at Bore 3	21.59	23.28	12.55	12.52	16.80	18.10	27.02	13
Stony at Mangatete Bridge	22.27	23.21	12.07	12.44	17.20	17.93	24.81	9
Taungatara at Eltham Rd	21.57	22.88	11.83	12.36	16.13	17.52	25.18	9
Tawhiti at Duffys	21.94	23.49	8.22	10.11	16.90	17.97	27.68	11
Uruti at Kaka Rd	22.29	23.10	10.57	11.69	16.29	16.97	24.71	6
Waitotara at Hawken Rd	23.04	24.28	11.65	12.93	16.92	18.96	27.81	9
Weraweraonga at Mangawhio Rd	23.75	25.46	9.42	11.14	16.28	18.68	26.84	7

4.2 Long-term data patterns

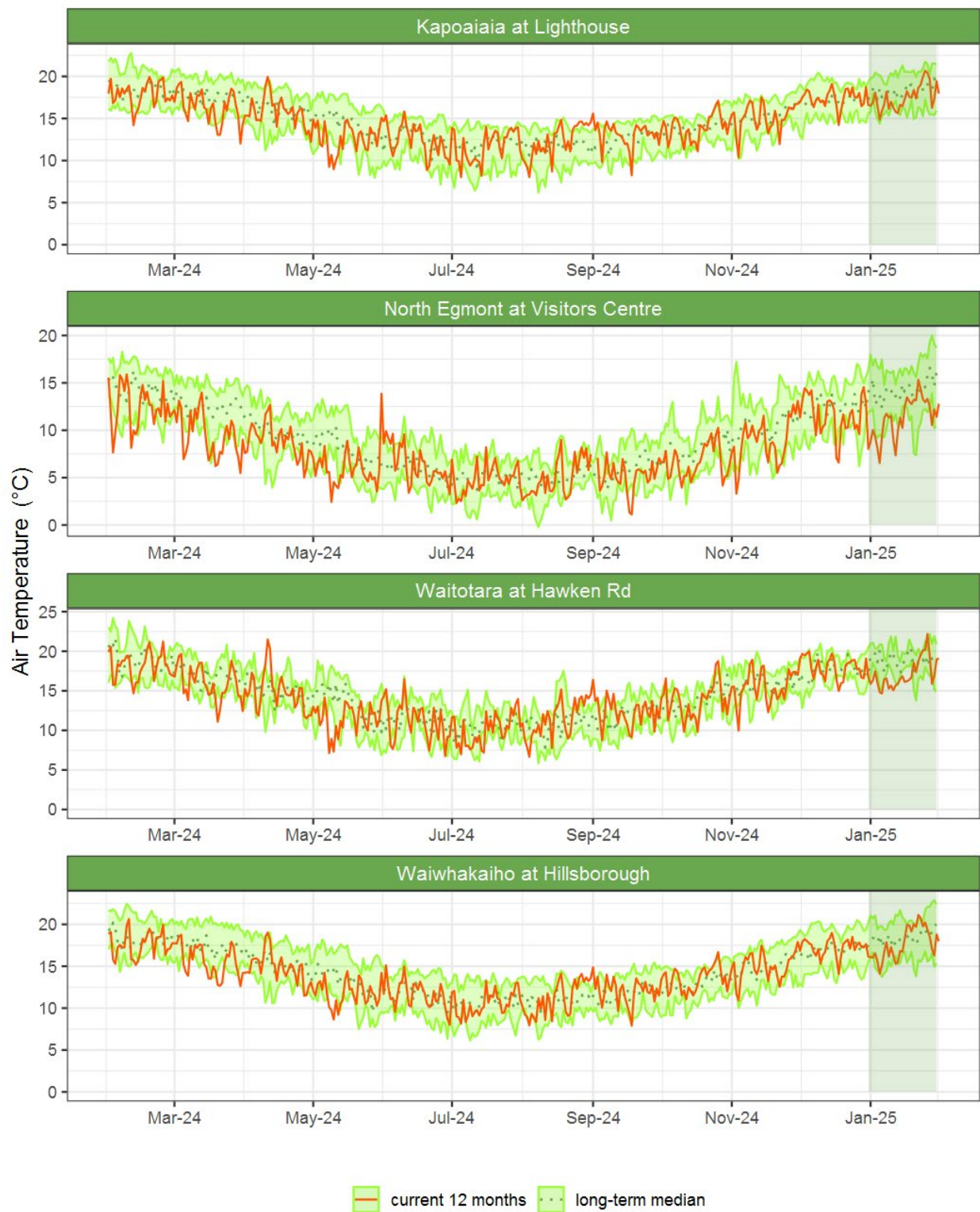


Figure 4.1: Running average air temperature for selected sites, set in context of the historic record.

4.3 Monthly Bar Charts

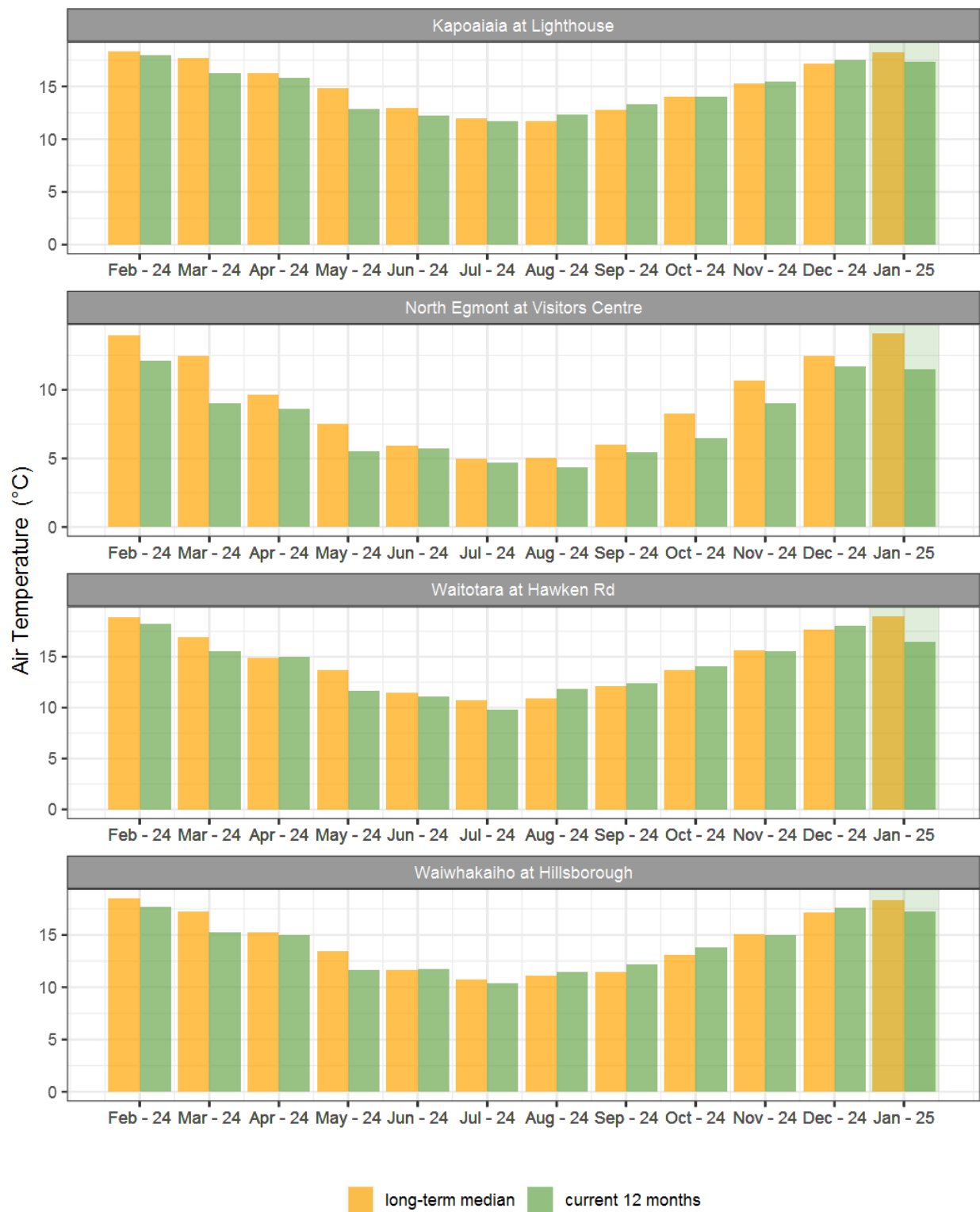


Figure 4.2: Monthly mean air temperature for January and the mean of all previously recorded months.

5. Soil Moisture

Map 5: January mean soil moisture content (%).

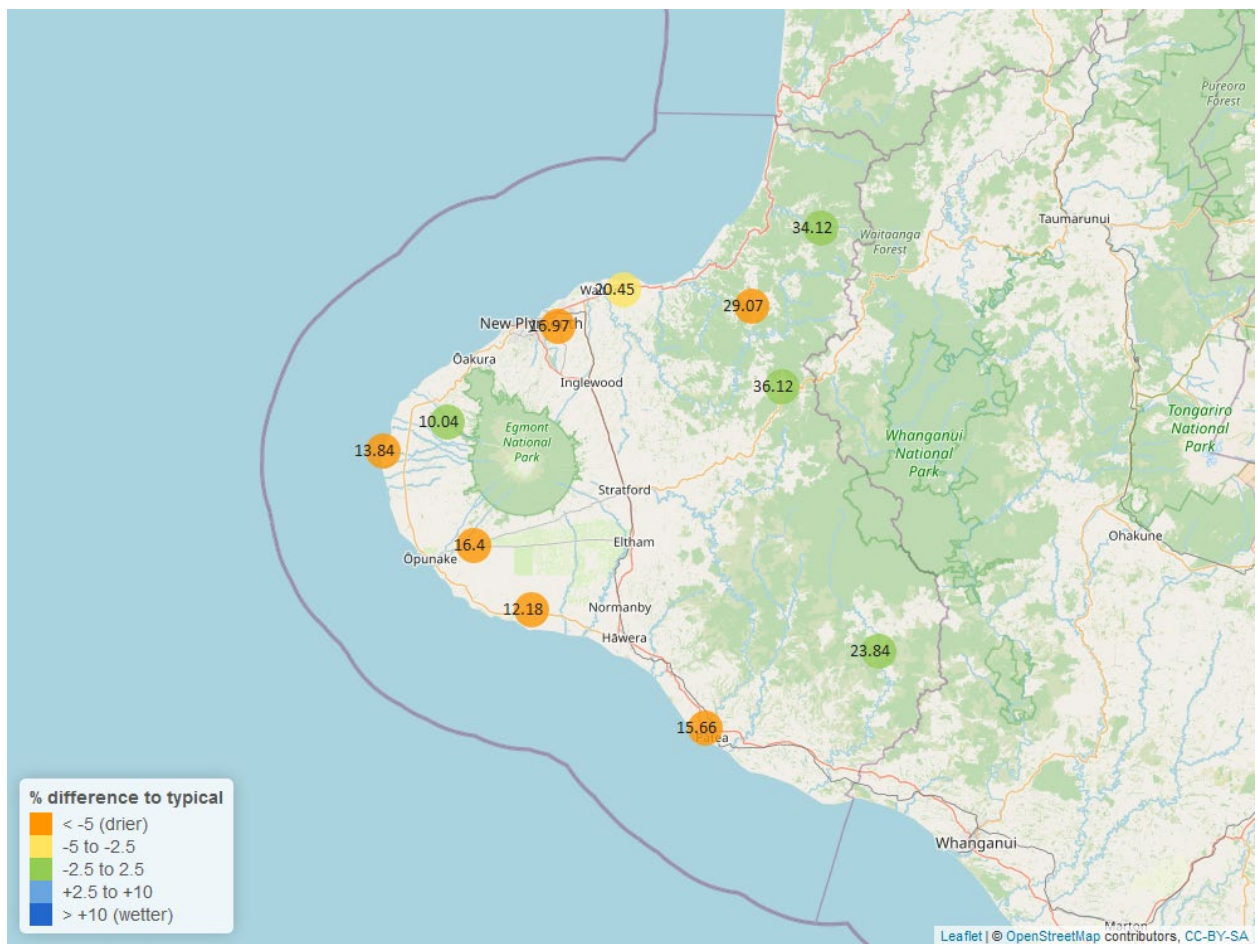


Table 5: Summary of high, low and mean soil moisture for January and for January in all preceding years of record.

January 2025 - Soil Moisture (%)								
	Highs		Lows		Mean			
Site	current month	historic	current month	historic	current month	historic	January maximum	Data years
Kapoaiaia at Lighthouse	19.12	26.32	11.56	9.70	13.84	20.70	19.65	13
Kaupokonui at Glenn Rd	14.10	34.20	10.94	11.83	12.18	19.97	14.38	14
Kotare at OSullivans	44.55	44.85	24.19	21.85	34.12	35.35	45.28	12
Motunui M39 at Weston W3	26.34	30.28	17.48	14.03	20.45	25.01	26.85	11
Patea at Bore 3	16.78	29.81	13.55	17.82	15.66	24.30	16.98	8
Pohokura Saddle	46.22	44.04	24.90	20.72	36.12	36.41	47.42	10
Stony at Mangatete Bridge	15.97	21.27	5.04	4.45	10.04	11.19	16.63	9
Taungatara at Eltham Rd	23.84	38.45	11.20	12.60	16.40	22.91	24.39	11
Uruti at Kaka Rd	36.56	43.60	20.76	20.55	29.07	36.19	37.09	13
Waitotara at Rimunui Station	28.73	26.94	20.11	18.65	23.84	23.20	30.03	8
Waiwhakaiho at Hillsborough	22.07	29.51	13.19	15.33	16.97	22.16	22.48	12

5.2 Long-term data patterns

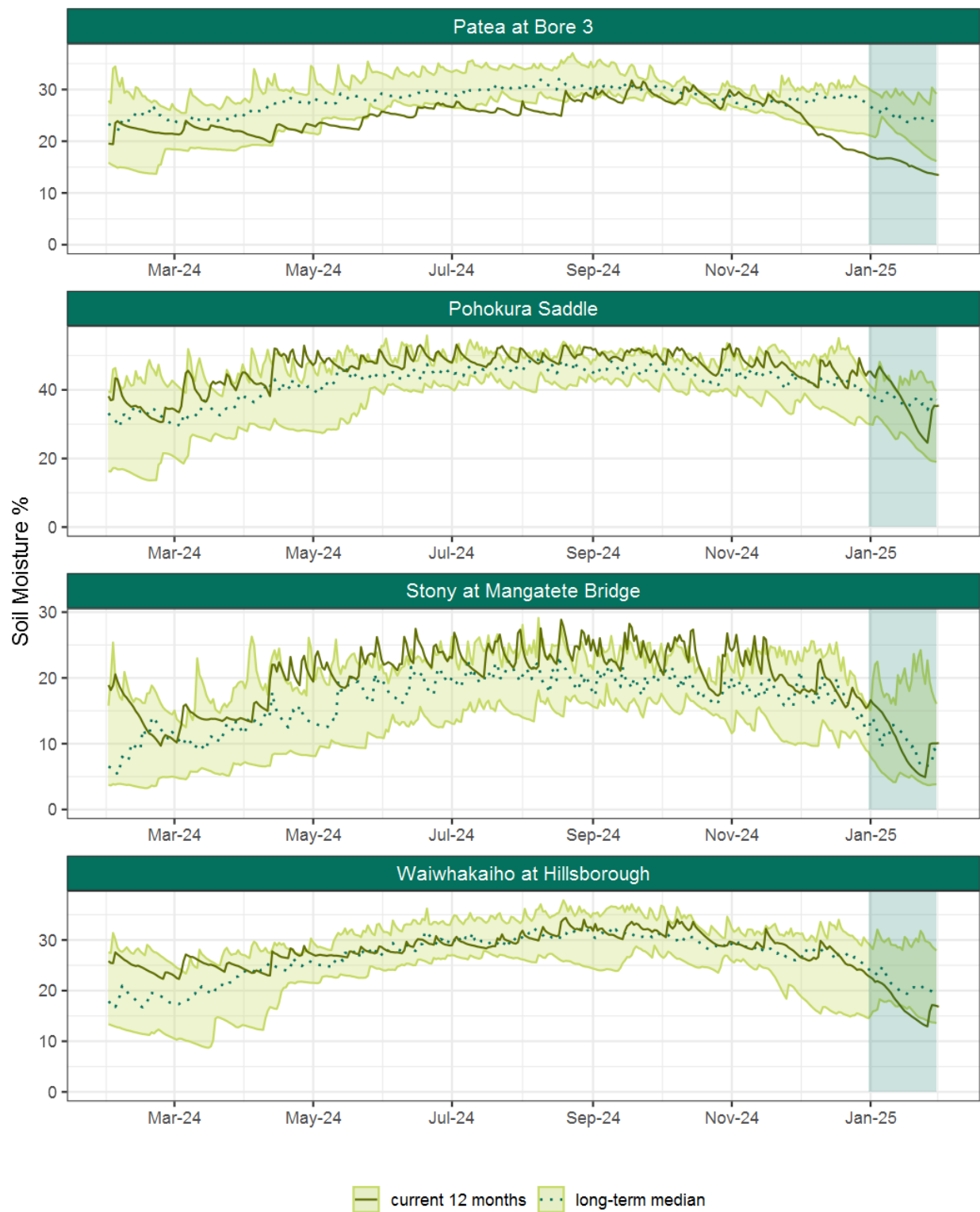


Figure 5.1: Running average soil moisture for selected sites, set in context of the historic record.

5.3 Monthly Bar Charts

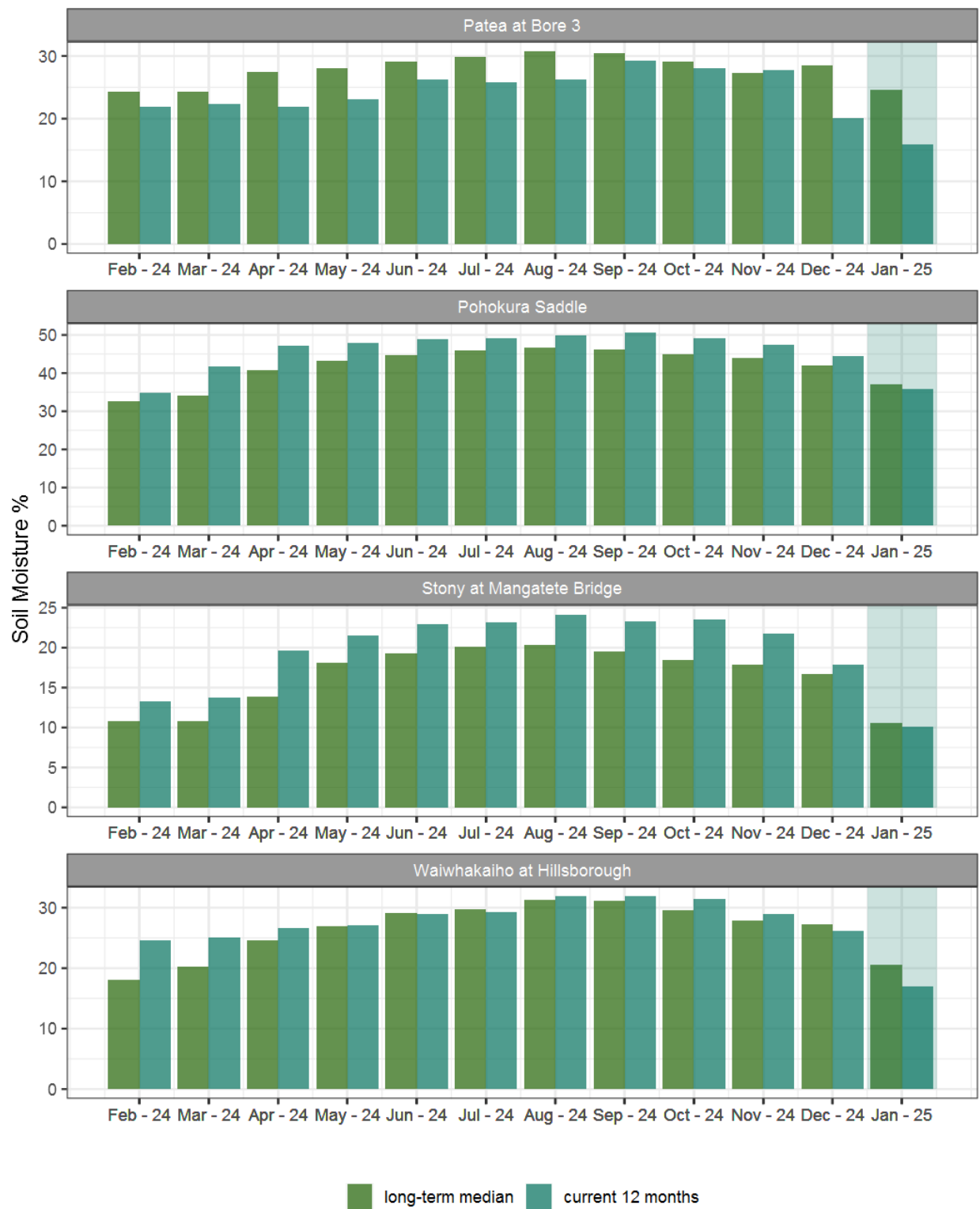


Figure 5.2: Monthly mean soil moisture for this month and the mean of all previously recorded months.

6. Soil Temperature

Map 6: January mean soil temperatures with difference to long-term mean (°C).

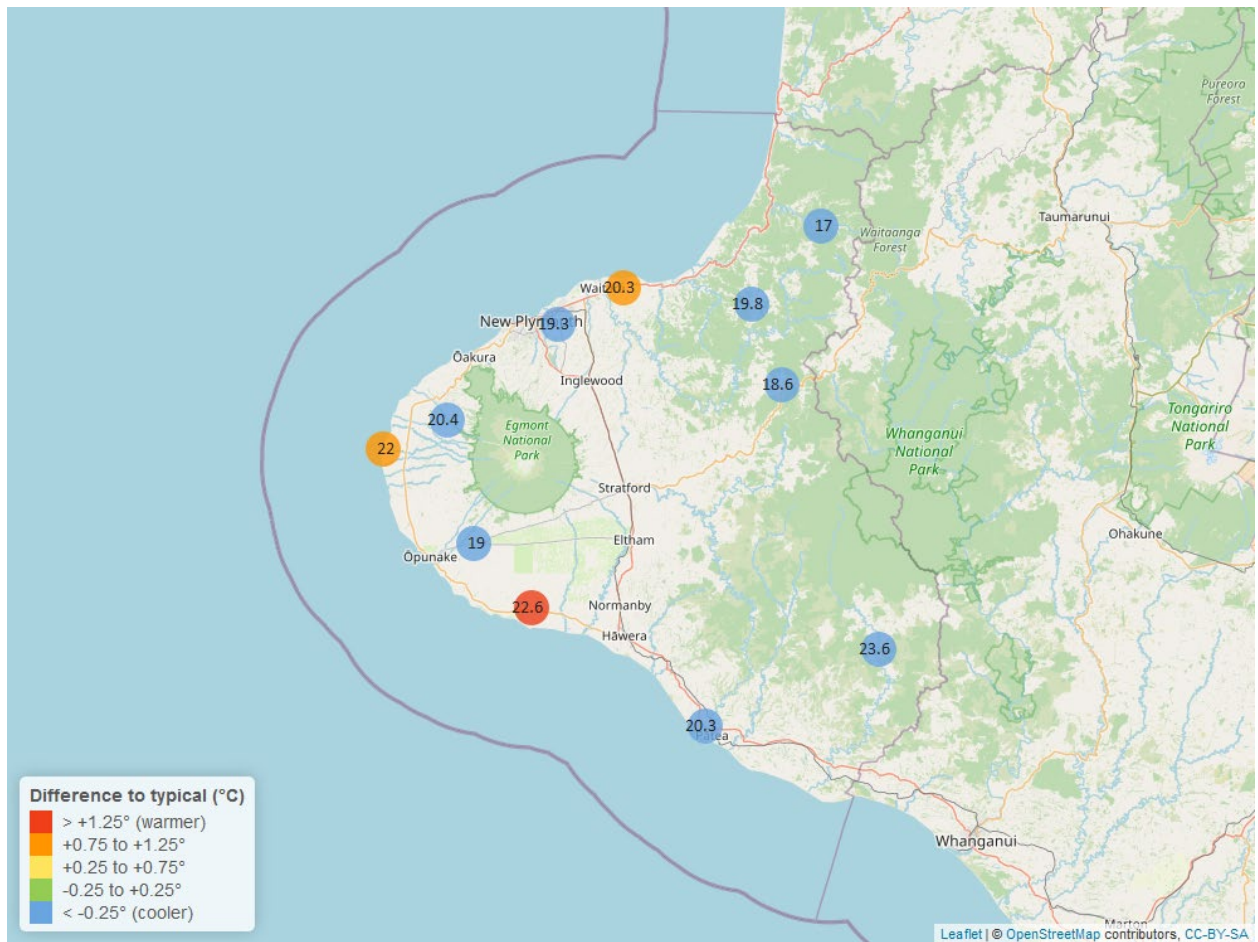


Table 6: Summary of high, low and mean soil temperature for January and for January in all preceding years of record.

January 2025 - Soil Temperatures (°C)								
	Highs		Lows		Mean			
Site	current month	historic	current month	historic	current month	historic	January maximum	Data years
Kapoaiaia at Lighthouse	25.48	24.54	19.29	18.24	22.0	21.04	27.25	13
Kaupokonui at Glenn Rd	25.43	24.02	20.14	17.80	22.6	20.10	26.30	14
Kotare at OSullivans	18.49	22.62	15.87	16.39	17.0	19.89	18.71	12
Motunui M39 at Weston W3	22.65	22.10	17.62	16.51	20.3	19.57	23.12	11
Patea at Bore 3	23.10	26.50	16.75	17.59	20.3	21.44	23.79	8
Pohokura Saddle	20.64	21.97	16.86	17.27	18.6	20.02	21.40	10
Stony at Mangatete Bridge	23.74	24.18	18.09	18.15	20.4	21.30	24.89	8
Taungatara at Eltham Rd	20.90	23.44	17.01	16.90	19.0	20.06	21.60	11
Uruti at Kaka Rd	20.81	22.41	19.20	17.60	19.8	20.21	20.89	13
Waitotara at Rimunui Station	27.06	27.33	20.75	21.56	23.6	24.16	28.06	7
Waiwhakaiho at Hillsborough	22.21	22.88	17.45	17.60	19.3	20.10	22.78	12

6.2 Long-term data patterns

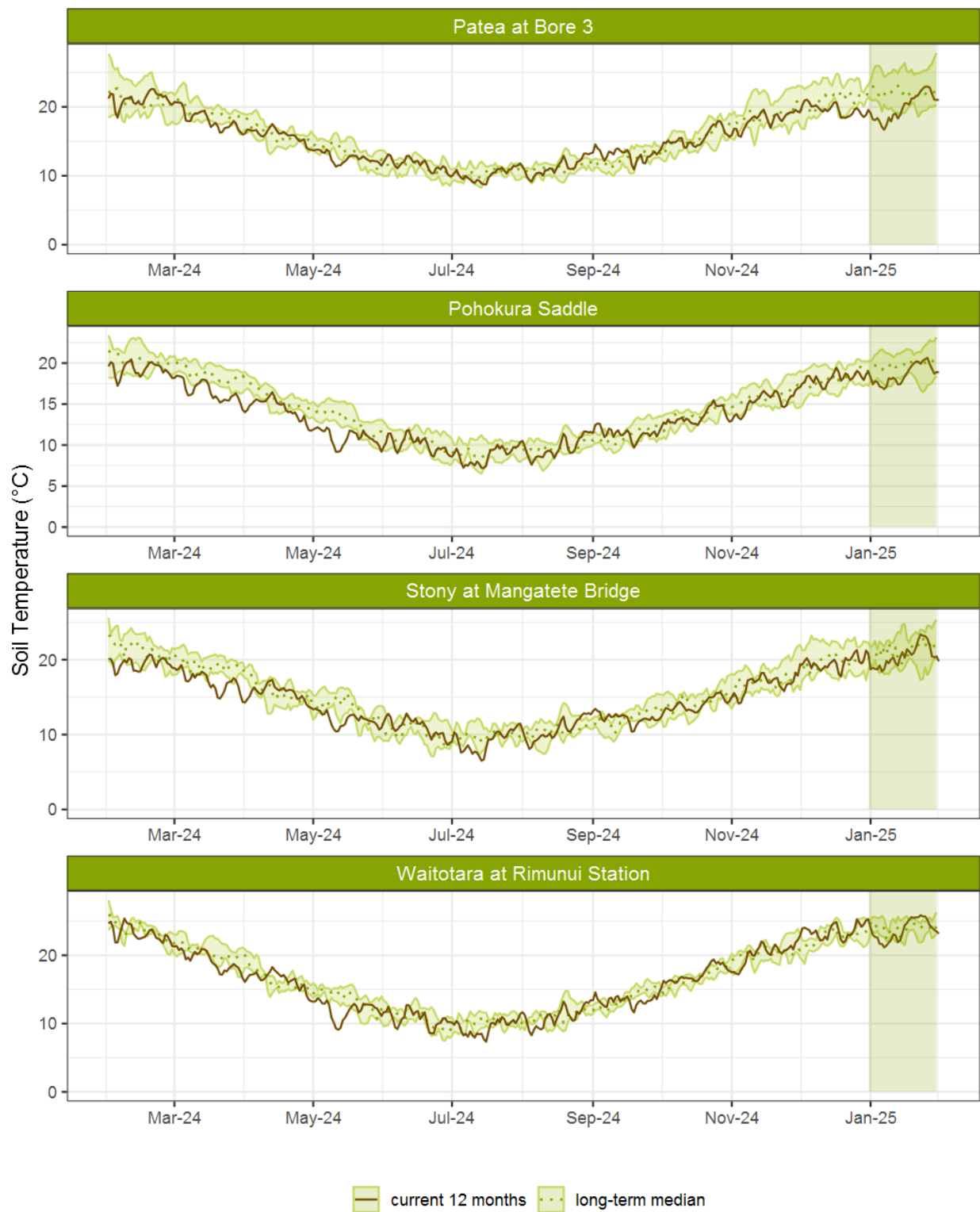


Figure 6.1: Running average soil temperature for selected sites, set in context of the historic record.

6.3 Monthly Bar Charts

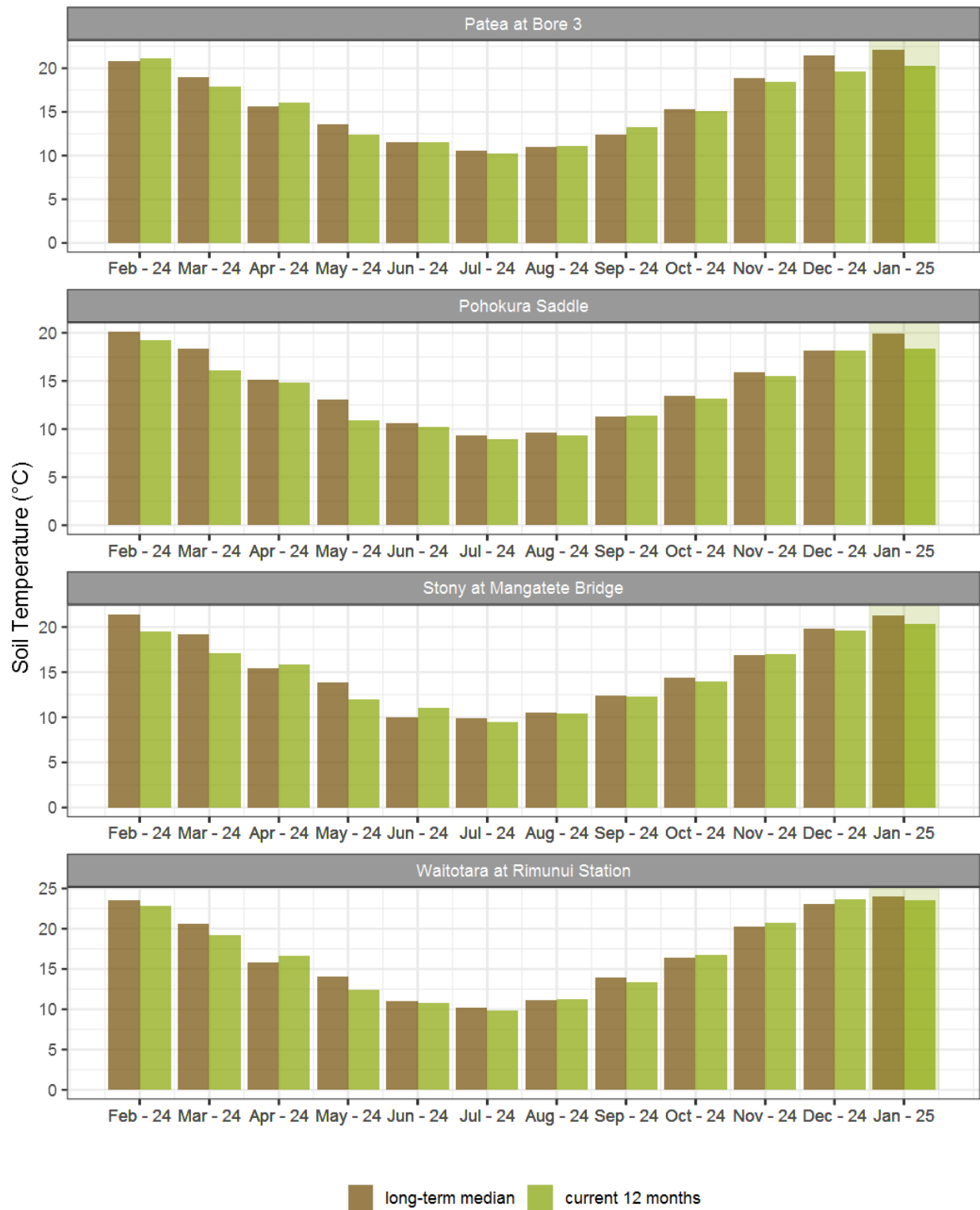


Figure 6.2: Monthly mean soil temperature for this month and the mean of all previously recorded months.

7. Wind Speed and Maximum Gusts

Map 7: January mean of wind speed with difference to long-term values (km/hr).

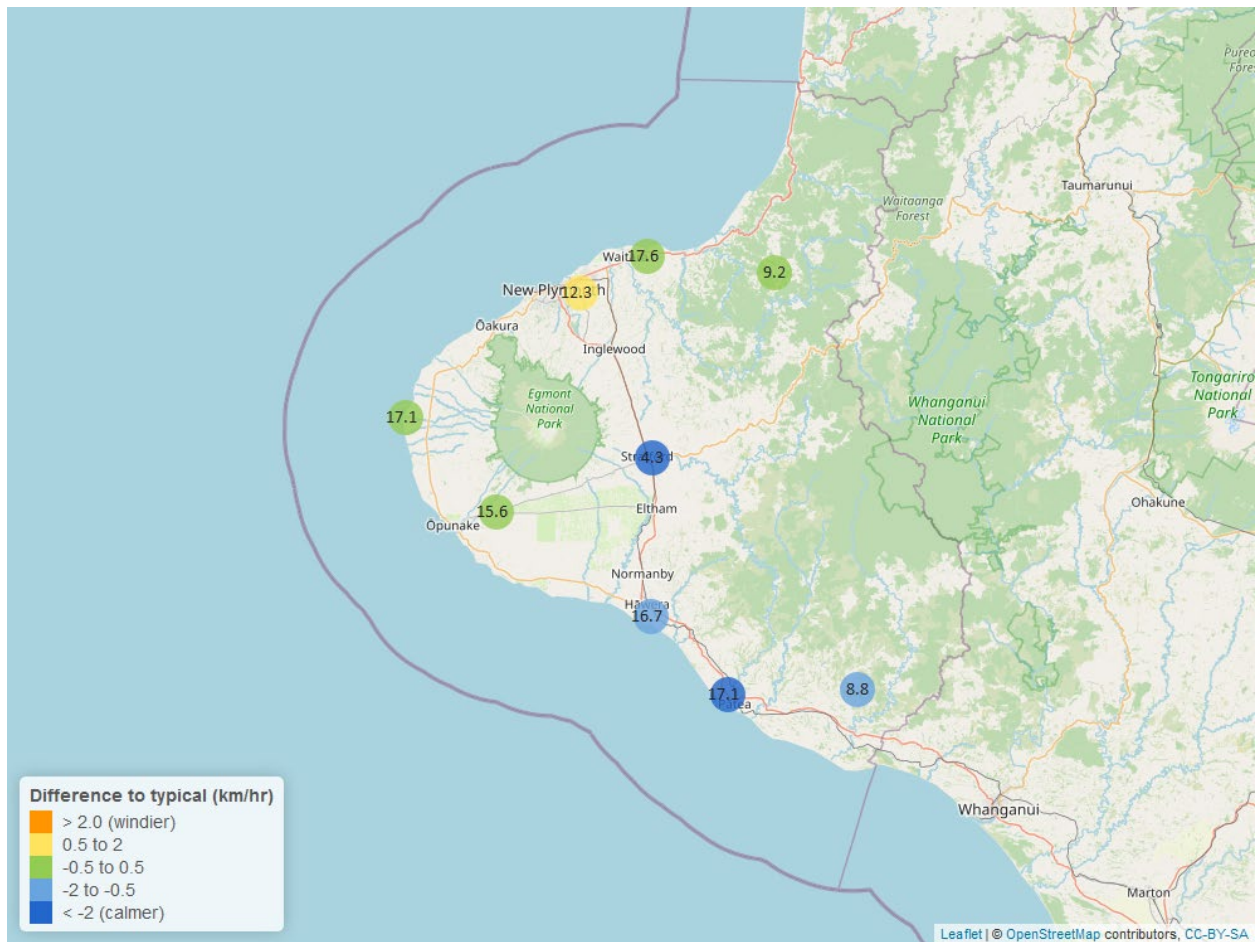


Table 7: Summary of high, low and mean wind speed for January and for January in all preceding years of record.

January 2025 - Wind Speed (average) - (km/hr)								
	Highs		Lows		Mean			
Site	current month	historic	current month	historic	current month	historic	January maximum	Data years
Hawera AWS	34.12	37.04	6.48	4.63	16.7	17.59	42.60	20
Kapoaiaia at Lighthouse	34.80	38.88	5.94	5.80	17.1	16.91	45.00	26
New Plymouth AWS	33.34	38.89	5.56	5.56	17.6	17.59	42.60	17
Patea at Bore 3	34.66	39.69	6.01	5.88	17.1	19.30	47.96	9
Patea at Stratford	13.20	18.30	1.77	1.94	4.3	6.42	19.96	19
Taungatara at Eltham Rd	27.97	30.83	6.37	5.99	15.6	15.47	39.34	9
Uruti at Kaka Rd	23.34	22.03	2.95	3.58	9.2	8.99	38.27	27
Waitotara at Ngutuwera	19.82	21.71	2.28	1.78	8.8	9.27	26.81	25
Waiwhakaiho at Hillsborough	26.81	29.71	4.49	3.47	12.3	11.79	35.63	7

Table 8: Summary of high, low and maximum wind gusts for January and for January in all preceding years of record.

January 2025 - Wind Gusts (Maximum) - (km/hr)								
	Highs		Lows		Mean			
Site	current month	historic	current month	historic	current month	historic	January maximum	Data years
Hawera AWS	61.12	70.38	25.93	24.08	42.6	44.45	70.38	20
Kapoaiaia at Lighthouse	62.64	74.10	21.60	20.20	40.0	39.40	63.00	26
New Plymouth AWS	66.67	70.38	29.63	24.08	44.5	44.45	72.23	17
Patea at Bore 3	63.70	73.10	27.60	24.70	43.4	46.30	68.60	9
Patea at Stratford	52.20	59.00	19.44	20.88	29.2	33.84	55.80	19
Taungatara at Eltham Rd	64.30	71.50	28.60	25.50	40.6	40.20	70.90	9
Uruti at Kaka Rd	76.68	65.90	24.12	22.68	46.4	34.10	94.00	26
Waitotara at Ngutuwera	71.64	66.96	26.64	21.00	41.4	37.60	72.36	25
Waiwhakaiho at Hillsborough	63.50	69.20	25.80	23.10	41.5	38.00	71.00	7

7.2 Long-term data patterns

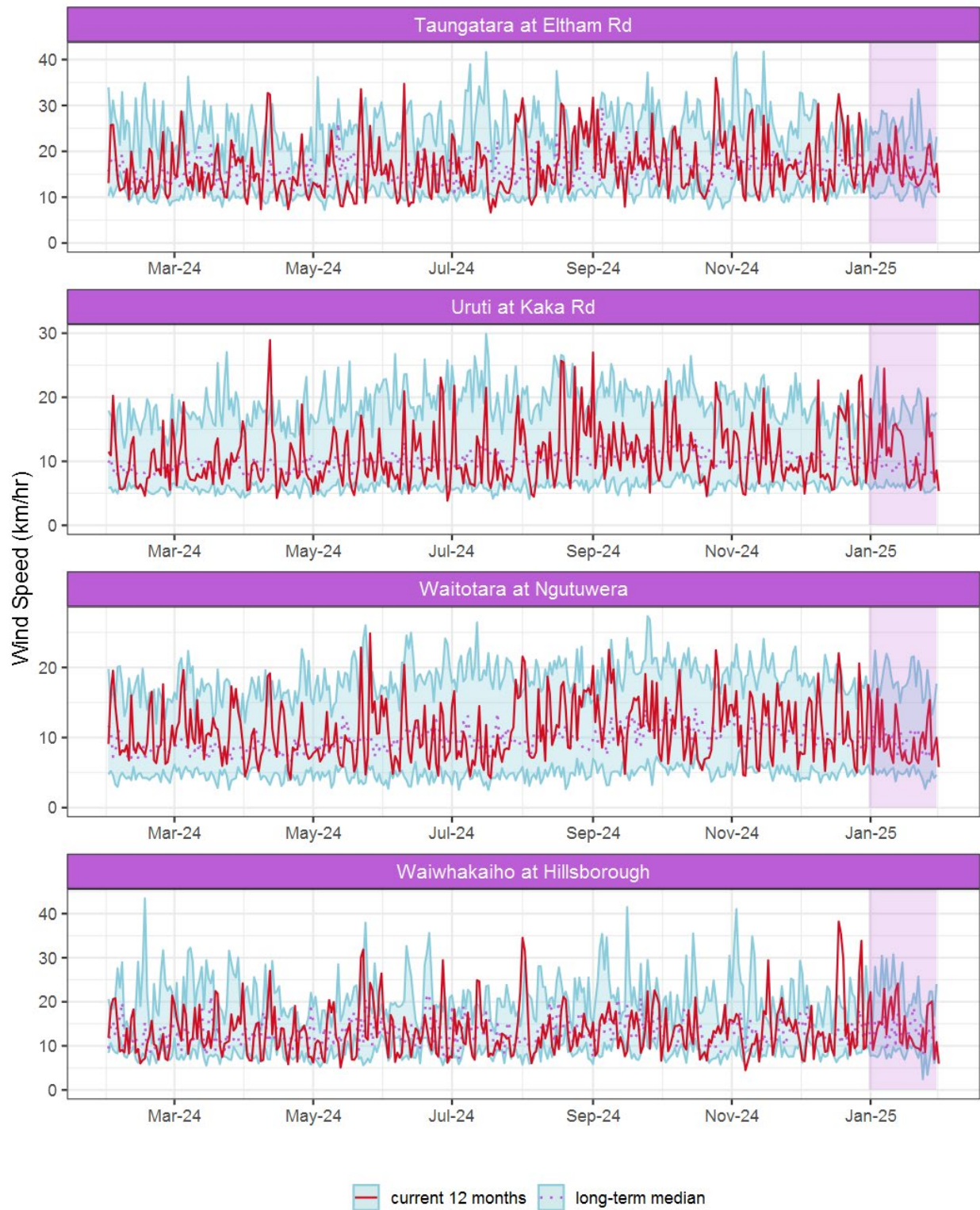


Figure 7.1: Running average wind speed (km/hr) for selected sites, set in context of the historic record.

7.3 Monthly Bar Charts

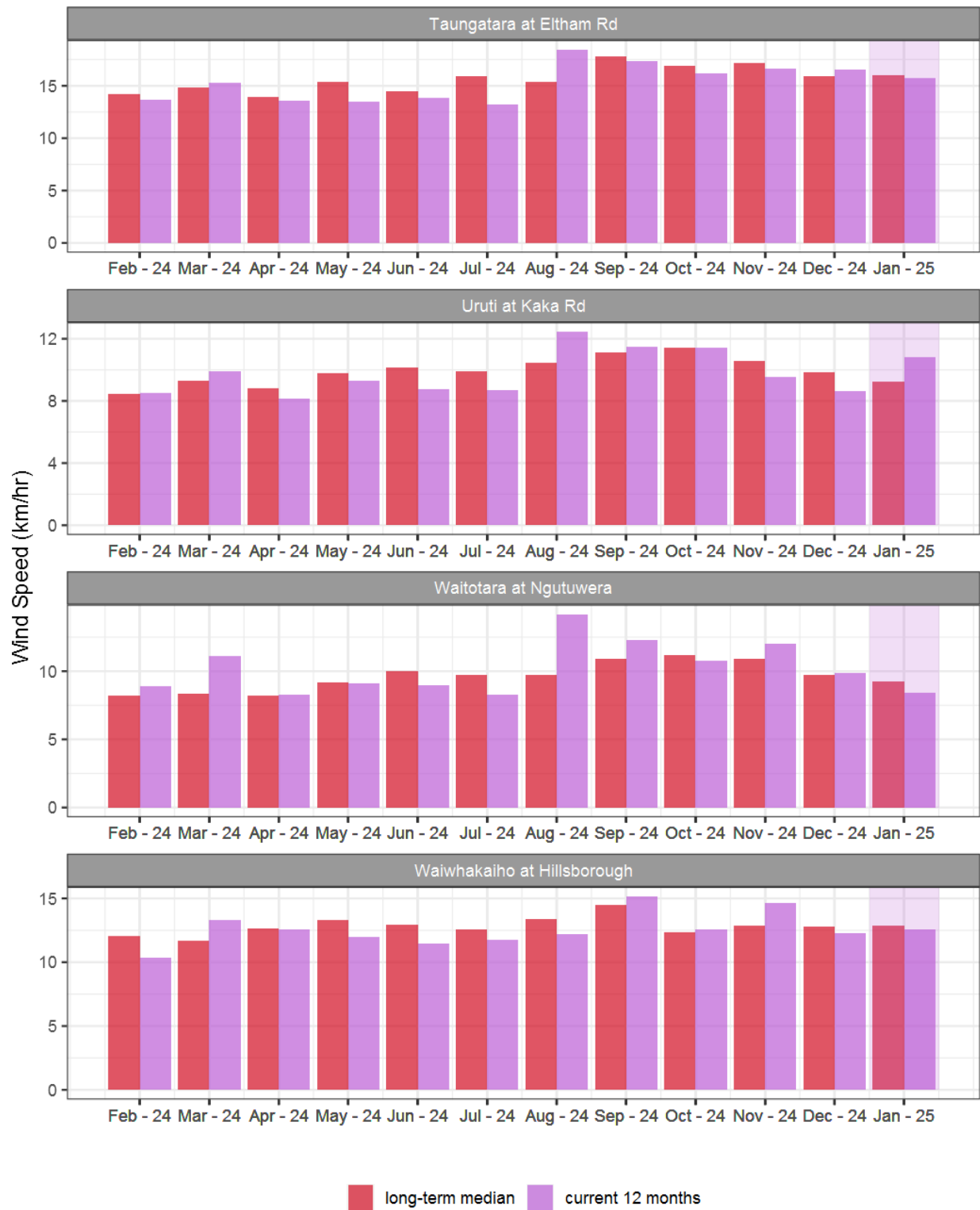


Figure 7.2: Monthly mean wind speed (km/hr) for selected sites, relative to the mean of all previously recorded months.

7.4 Wind roses for January 2025

Average windspeed

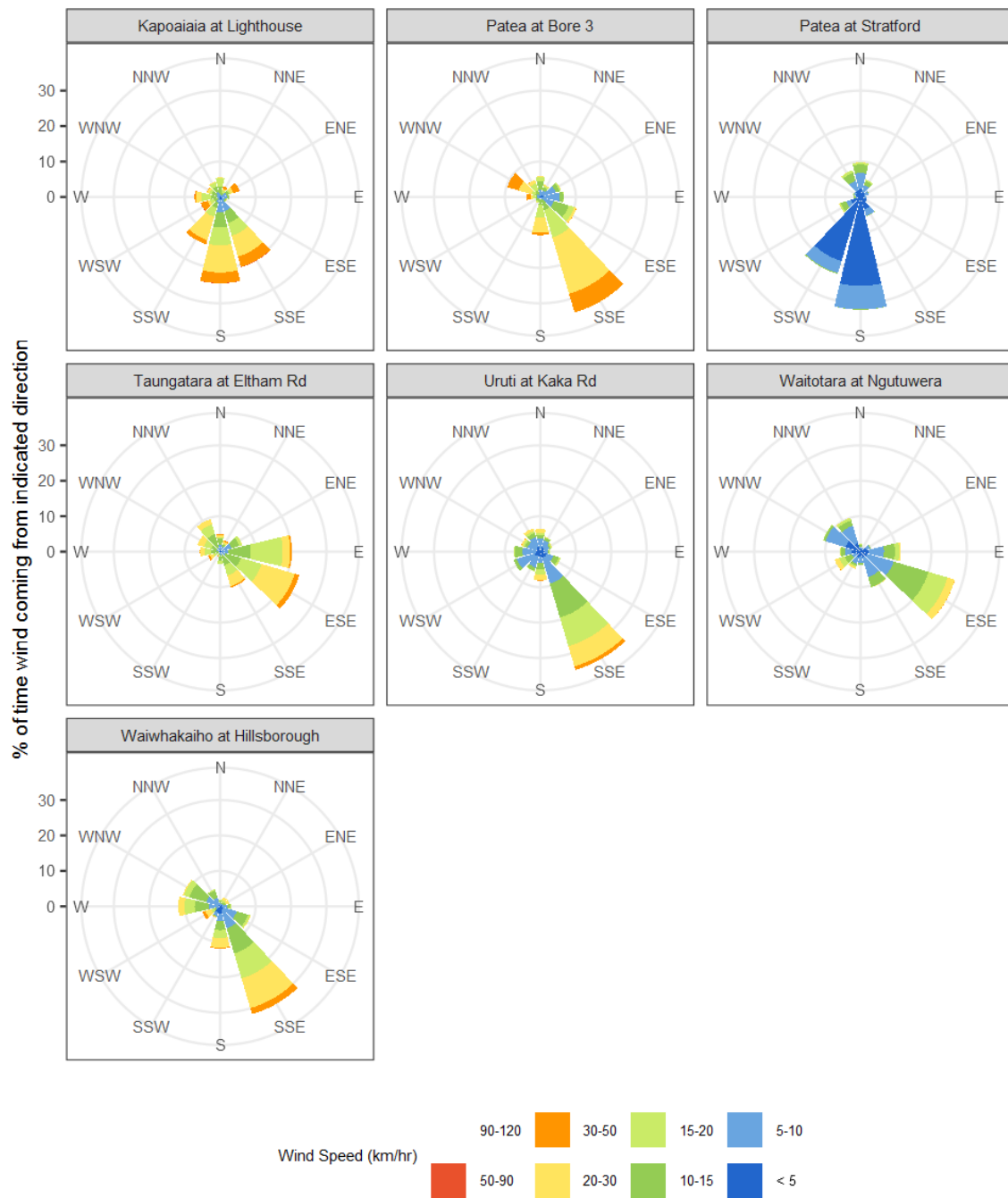


Figure 7.3: Wind roses for January for average wind speed (km/hr).

Maximum gust strength

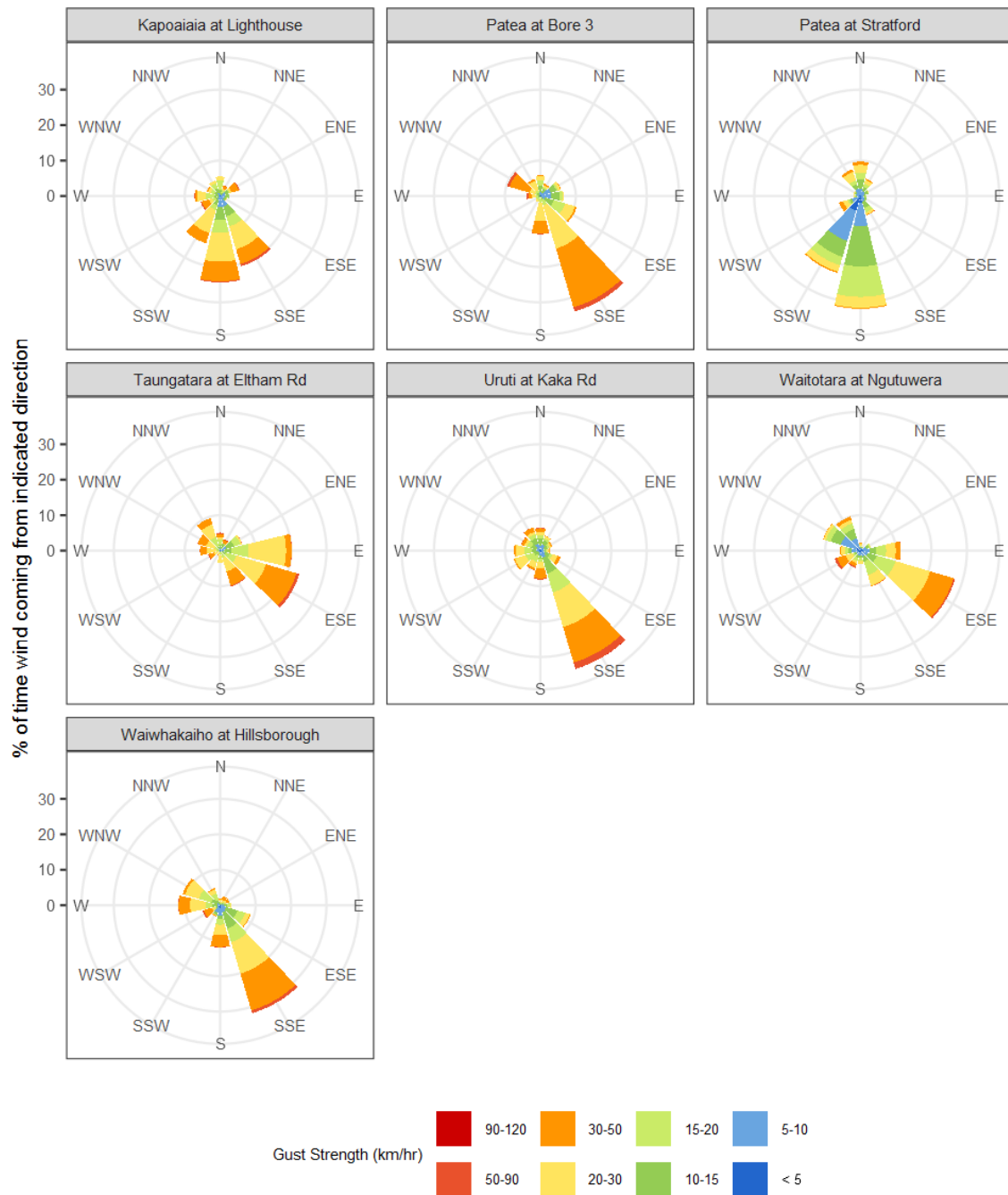


Figure 7.4: Wind roses for January for maximum wind gust (km/hr).

Summary of month's conditions

Rainfall

On average January rainfall was 63mm, 34% less than usual, ranging from 59% less at Kaupokonui at Glenn Rd, and 16% more at Omahine at Moana Trig.

Compared to typical full year totals, on average sites have received 4% of a typical year's rainfall, with the highest value at Waitotara at Ngutuwera, 7% of normal, whereas Inglewood at Oxidation Ponds sits at 2% of the typical year's total.

River Flow

Mean river flows for January were 40.1% lower than typical values, low flows were 11.6% lower and high flows 66.2% lower than typical values. The maximum river flow recorded in January was 58.1m³/sec at Waiwhakaiho at Vickers Rd on 26 January.

River Water Temperature

Mean river (non-mountain) water temperatures were 17.6°C, an average of 0.6°C cooler than long-term January values. Nighttime-low water temperatures were on average the same as historic lows, and day-time high temperatures were on average 1°C cooler than historic highs. The maximum river water temperature recorded in January was 26.3°C at Kapoiaia at Lighthouse on 24 January.

Air Temperature

The average air temperature for the region (excluding Te Maunga sites) was 16.3°C, which is 1.2°C cooler than long-term January averages. Low air temperatures for January were on average 0.7°C cooler than the January average for previous years. Day-time high temperatures were on average 1.2°C cooler than historic highs. The maximum air temperature recorded in January was 28.9°C at Brooklands Zoo at New Plymouth on 22 January.

Soil Moisture

The average soil moisture for January across sites in Taranaki region was 20.8%. Soil moistures were on average 4.4% drier than typical January values. On average, low soil moistures were 0.5% wetter than previous lows, and the highs were on average 6.8% drier than previous values for January.

Soil Temperature

January soil temperatures were generally 0.5°C cooler than long-term averages. Average nighttime low soil temperatures were 0.3°C warmer than recorded lows, and upper day-time soil temperatures were on average 1°C cooler than long-term January highs. The maximum soil temperature recorded in January was 28.1°C at Waitotara at Rimunui Station on 22 January.

Wind Speed (average and 10 minute gust)

January average wind speeds were 13.2km/hr, with average gust strength of 41.1km/hr, these were 0.5km/hr lighter, and 1.2km/hr gustier than the long-term average. Average calm weather wind speeds were 0.4km/hr stronger than recorded lows, and windy conditions were on average 3.2km/hr lighter than long-term January highs. The maximum wind gust recorded in January was 94km/hr at Uruti at Kaka Rd on 4 January.

Report date: 4 February 2025.

Supply of environmental data - General terms and conditions

The enclosed information is the highest quality data the Taranaki Regional Council (the Council) is currently able to provide. Some or all of the data being provided may not yet have been audited however, and is therefore subject to change.

As we endeavour to continuously improve our products, we also reserve the right to further amend data where necessary and without notice at any time. As a result, the information supplied to you now may not be the same as that subsequently produced for you or any other requestor.

While the Council has exercised all reasonable skill and care in controlling the contents of the information, you should independently check the information provided if the accuracy of that information is important to you.

Under no circumstances will the Council, its employees or agents be liable in contract, tort or otherwise to compensate you for any loss, injury or damage (including loss of profits or consequential loss) arising directly or indirectly from the supply by the Council or its agents of inadequate, inaccurate or incorrect environmental data.

Any use of the material supplied, for example, by inclusion in a report or a media release, should be accompanied by an acknowledgment of the source of the data. We also request that any outputs generated through the use of the information provided be provided to the Council.