

Two Stratford home schoolers demonstrate how to use the pictorial Northern NZ Rocky Shore Guide to correctly identify some of the many plants and animals that inhabit our rocky shore.



Ahititi school wins an Environmental Award



Councillor Roger Maxwell presents Ahititi school pupils with their award to recognise the school's environmental education programme. In recent years the school has studied climate change, built a glasshouse, planted shelterbelts, grown vegetable and fruit gardens, taken part in beach clean ups and planted trees on river banks and in wetlands. All this from a school with a roll of about thirty five pupils. Well done Ahititi.

Pond visit letter of thanks

The junior rooms at Spotswood primary have been studying wetlands. The study included a PowerPoint presentation and a visit to the school's outdoor classroom. I received many thank-you letters from the students and here are a few.



Coastal Area School gets busy at the Waikirikiri lagoon

Some of the sixty Coastal Taranaki Area School Year 10 students and their teachers who joined several local identities and Council personnel to plant over 3,000 plants on a cold and very windy morning in early June. The school is to be congratulated for its involvement in preserving this important area.



Bits 'n' Pieces

Predator - Animal Survival Game

I have available the very popular Predator game which is based on food pyramids incorporating animals in the New Zealand bush. Many teachers use the games as part of their camping programme or in a Conservation study providing they have a suitable bush adjacent to the school. Bookings are essential but there are some spaces still available. Call Kevin to make a booking.

Professional Development

Biodiversity - Thursday 5 August.
See the flyer in this newsletter for details.

Sleeper Wakes by David Hill

A set should be in your school. If you need more copies for Taranaki Blowout give Kevin a call.

St John Bosco's efforts rewarded

Councillors Barry Marsh and David MacLeod with a Fitzroy Lions club representative and pupils from St John Bosco school at its Council Environmental Award ceremony. The school, along with many groups has been involved in clearing the wetland for development, two planting days and the building of a walkway. It has integrated the wetlands into its environmental education programme. A great effort all round.



Answers from page 3

Multi choice quiz: 1.A 2.B 3.C 4.B 5.A 6.C 7.A 8.C 9.B 10.A

Close activity: rock, crust, cracks, crater, Magma, erupts, lava, Earth, summit, volcano, Mars.

For support with environmental education contact:

Kevin Archer, Education Officer
Taranaki Regional Council
Private Bag 713, Stratford

Ph: 06 765 7127 Fax: 06 765 5097
E-mail: education@trc.govt.nz
www.trc.govt.nz



Schools in the environment newsletter

Wonderful Wintertime

Welcome back to the third term which is bound to be just as hectic as terms one and two.

Last term I was involved with three New Plymouth schools which pooled a small number of very able pupils to work with teacher Mrs Sandra Bennett and myself for a close-up look at the Huatoki stream. The programme involved data gathering on four field trips, written reports and follow up presentations at school assemblies. I was present at the St Pius X assembly and the pupils used a PowerPoint presentation to show their findings and conclusions and very well presented it was too. Thanks to St Pius X, St Josephs (New Plymouth) and St John Bosco for the opportunity to work with your students.

I also had an opportunity to see how much the six and seven year olds in Room 2 at St John Bosco knew about wetlands and in particular how a wetland acts like a sponge to absorb water. Under the guidance of teacher Mrs Gail Church, the class used a wide range of experiments to show how this process happens, even in periods of little or no rainfall.

During the April school holidays, our two Sir Peter Blake Youth Environment Forum delegates Luke Duthie (Francis Douglas Memorial College) and Sarah Harris (New Plymouth Girls High School) joined over forty other students in Wellington. Their experiences were presented to a recent Taranaki Regional Council meeting. It was obvious they had a fun filled, inspirational and enjoyable five days.

It is my guess and indeed my hope that schools regularly practise earthquake and fire drills as part of their emergency preparations. Certainly, in my over thirty years as a practising teacher, I can recall many such drills and what's more, we had them down to a fine art which is, as it should be. However I cannot recall too much thought being given as to what we should, could or would do if Mount Taranaki chose to wake up from its relatively short sleep. This is a little concerning, given that most of us live very close to the mountain which almost certainly will erupt some time in the future. With this in mind please consider being involved in Taranaki Blowout, a campaign to increase our readiness for this sort of event.

Regards to all.
Kevin Archer



What will happen when our mountain erupts?

The Taranaki Blowout community exercise is an opportunity for teachers and students to:

- understand our volcano
- be ready if it erupts

The fictional scenario is aimed at individuals, households, schools and businesses and will be held in September and October this year. This issue of SITE backgrounds the scenario itself and how students, teachers, principals and boards of trustees can get involved.



Mt Ruapehu erupting in September 1995

Environmental Award Frankleigh Kindergarten

Frankleigh Kindergarten was recently presented with a Taranaki Regional Council Environmental Award, a first for any kindergarten in our region.

Councillor Barry Marsh presented the award to headteacher Mrs Jan Forsythe (aka Michael Recycle) and congratulated the kindergarten on its achievement. The entire kindergarten has been involved in the environmental programme which includes recycling two 240 litre bins of material each week, producing compost to grow fruit and vegetables, switching off all unnecessary electrical equipment and changing the kindergarten's lunchbox policy.

Ahititi and St John Bosco schools were also award winners (see photos and captions on Page 4). Both schools have been very active in promoting their environmental education programmes with involvement from every pupil in some form or other.



TARANAKI BLOWOUT

taranakiblowout.org

13 SEPTEMBER 2010 - 22 OCTOBER 2010

The Taranaki Civil Defence Emergency Group invites all schools to participate in Taranaki Blowout, which will run from 13 September to 22 October this year. The campaign aims to help the Taranaki community to better understand Mount Taranaki's volcanic hazards and to act now, to be better prepared to cope with an emergency in our region.

Schools are encouraged to participate at a classroom or school level. Students will also be encouraged to look at what they can do at home to make sure their families are prepared.

The campaign is based on a realistic eruption scenario for Mount Taranaki. Over six weeks, it will progress through stages from the early signs of a possible eruption, to a major eruption on Wednesday 13 October, and finally a recovery and follow-up phase.

For 2010 the Ministry of Civil Defence and Emergency Management has renamed Disaster Awareness Week to Get Ready Week in a move to encourage people to take action to Get Ready. The local Civil Defence Emergency Management (CDEM) group are using Taranaki Blowout as a regional activity to achieve this.

Taranaki Blowout and What's the Plan Stan?

Your school will have an updated (2009) edition of the Civil Defence Emergency Management resource, What's the Plan Stan? I know many of you have incorporated parts of it into your emergency preparedness programmes. Taranaki Blowout is linked to What's the Plan Stan? in many ways. Both programmes:

- Provide teachers with a range of resources and activities to incorporate disaster awareness and preparedness into teaching and learning programmes.
- Assist principals, school management and Boards of Trustees with the school's civil defence emergency management processes.
- Provide students and their families with relevant information in a format that is interesting, easy to understand and accessible through local and national websites.



Ash particles from a volcanic eruption can become electrically charged resulting in lightning strikes.

Campaign phases

The campaign will be available on the Council website, or taranakiblowout.org. The scenario will unfold on the web pages over the six weeks and information and activities will be updated each week.

1 The build-up phase 13 September - 8 October

The build-up phase will raise awareness of the volcanic risk in Taranaki, provide information about a likely eruption scenario, inform the public on preparedness for a volcanic eruption, promote the CDEM text warning system, promote the importance of listening to official radio stations, encourage schools to use What's the Plan Stan? etc

2 The eruption phase 11 - 15 October

Week 5 of the campaign will involve a realistic eruption on 13 October. It is designed to make the Taranaki community stop and think about their level of preparedness.

3 The recovery and follow-up phase 18 - 22 October

In the final week the community and schools will look at how they might deal with a recovery from the impacts of the eruption. After the campaign, further assistance will be available if required. Indeed, the website will still be available for everyone to use as an information source.

Will your Board of Trustees and your principal be up to speed?

Yes, the Board of Trustees chairperson and your principal have been sent letters inviting your school to participate in Taranaki Blowout.

How can your school be involved in Taranaki Blowout?

- Make use of the Taranaki Blowout campaign to review emergency planning in your school and include activities from Taranaki Blowout in your teaching programme.
- Schools, teachers or students can register from mid August at taranakiblowout.org. If you are registered you will be alerted to updates of the scenario by email.
- Invite Education Officer Kevin Archer to one of your staff or syndicate meetings early in the term to give you further information and assistance.

How can you involve your students in Taranaki Blowout?

- Firstly, make them aware of the campaign by discussing this newsletter with them or encouraging them to download one from our website www.trc.govt.nz

- Encourage them to look on the website www.taranakiblowout.org for the registration process, so they and you can sign up and thereby commit to some level of involvement.
- Encourage them to stay involved in the campaign via class or homework projects. Invite Council Education Officer Kevin Archer to talk to your class about emergency kits/household plans/getaway kits/caring for pets and livestock/volcanic history etc
- Arrange for your class to visit TEMO (the Taranaki Emergency Management Office) in New Plymouth to see how it is set up to co-ordinate the region's response.

Planning

- We are aware that two weeks of the campaign fall in the September - October holidays so there is a need for your planning to be organized prior to this.



Even in daylight, volcanic ash can severely affect visibility.

Junior Environmentalists Page



Jumbled sentences

The following sentences are made up of words with the letters jumbled. Unjumble each word and you will get lots of good advice about what to do during a volcanic eruption.

1. neslit ot het diora rof ionssinstruct.

 2. ysta donoirs - peek wwsinwod dan oodrs huts.

 3. Grbin oury step oorsdin fi ouy nac.

 4. vase terwa ni rouy thba dan reoth

- tainconers ta na lyear gtsae, sa the trewa

- ppusy yam comebe tedpollu.

5. fi toudoros, dinf ltershe.

 6. fi lotd ot eavel, verco oury cefa dan muoht,

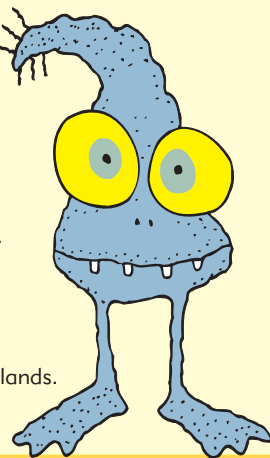
- reaw a sudt kams dan gggoles fi ouy nac,

- keta uoyr tailsseen eeemrgncy vsurlai stime

- nad od ton og gnieesthgis.

Volcano Quiz

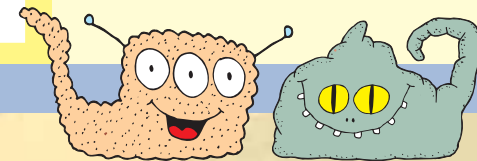
- 1 What is the name of molten rock within the earth's crust?
A magma
B lava
C vent
- 2 Which of these volcanoes is not in Taranaki?
A Kaitake
B Tongariro
C Pouakai
- 3 In which part of the earth would you find a magma reservoir?
A on the surface
B above the volcano
C beneath the surface
- 4 What is the name of the bowl-like opening of a volcano?
A plate
B crater
C saucer
- 5 Sea shell deposits in eastern Taranaki indicate:
A that Taranaki was once covered by a shallow sea.
B that Taranaki was once covered by a very deep sea
C that lots of sea food was eaten by the early residents in the area.
- 6 New Zealand has six active volcanic regions in the following areas:
A all are in the North Island.
B five are in the North Island and one is in the South Island.
C five are in the North Island and one is in the northern offshore islands.
- 7 What is the name of an opening through which molten rock and gases escape from a volcano?
A vent
B doorway
C lift
- 8 An extinct volcano will:
A stay extinct forever
B will definitely erupt some time
C will possibly erupt some time.
- 9 Mount Taranaki last erupted in:
A 1066
B 1755
C 1981
- 10 What is the name of Taranaki's earliest volcano?
A Paritutu
B Kaitake
C Kapuni



Word find

See if you can find the words listed.

● volcano	S	J	T	R	H	D	F	B	P	S	P	E	M	O	D
● magma	T	H	S	P	G	O	T	L	C	Y	L	F	C	E	E
● crust	T	A	B	Y	C	N	E	G	R	E	M	E	R	E	B
● crater	M	A	G	M	A	A	M	O	U	N	T	A	I	N	R
● summit	Z	M	E	M	U	C	C	C	S	M	P	O	O	L	I
● rock	Q	D	R	D	V	L	T	P	T	E	C	V	V	I	S
● lava	M	O	U	E	A	O	S	U	R	F	A	C	E	Y	L
● erupts	D	M	P	S	T	V	W	P	O	Y	E	V	S	G	A
● vent	D	P	T	U	E	A	D	S	H	J	N	D	E	N	N
● gases	E	I	S	M	E	S	R	I	S	K	C	O	R	N	D
● active	C	V	U	M	A	H	A	C	S	U	G	M	V	R	T
● dormant	O	L	I	I	B	V	Z	G	Y	C	G	K	U	D	T
● dome	P	O	T	T	C	O	A	Z	E	F	I	P	P	E	W
● mountain	E	W	K	G	C	N	H	L	P	R	I	R	F	W	H
● surface	U	K	V	C	F	A	U	Y	O	R	Y	N	U	Y	A
● pyroclastic															
● debris															
● emergency															
● ash															
● mud															
● plume															
● island															
● prepared															
● risk															
● hazard															
● cope															



Close activity

Fill in the blanks using the following words - Mars, crust, crater, summit, rock, lava, cracks, Magma, Earth, volcano, erupts

A volcano is a place on the Earth's surface where molten....., gases and pyroclastic debris erupt through the Earth's..... Volcanoes vary quite a bit in their structure - some are..... in the Earth's crust where lava erupts, and some are domes, shield or mountain-like structures with aat the summit.is molten rock within the earth's crust. When magmathrough the Earth's surface it is called The largest volcano on is Hawaii's Mauna Loa which is about 10km tall from the sea floor to its The largest in our Solar System is perhaps Olympus Mons on the planet



Did you know ...
That when Mt St Helens in the USA erupted on May 18 1980 it was classed as being 'asleep'.

Answers on page 4