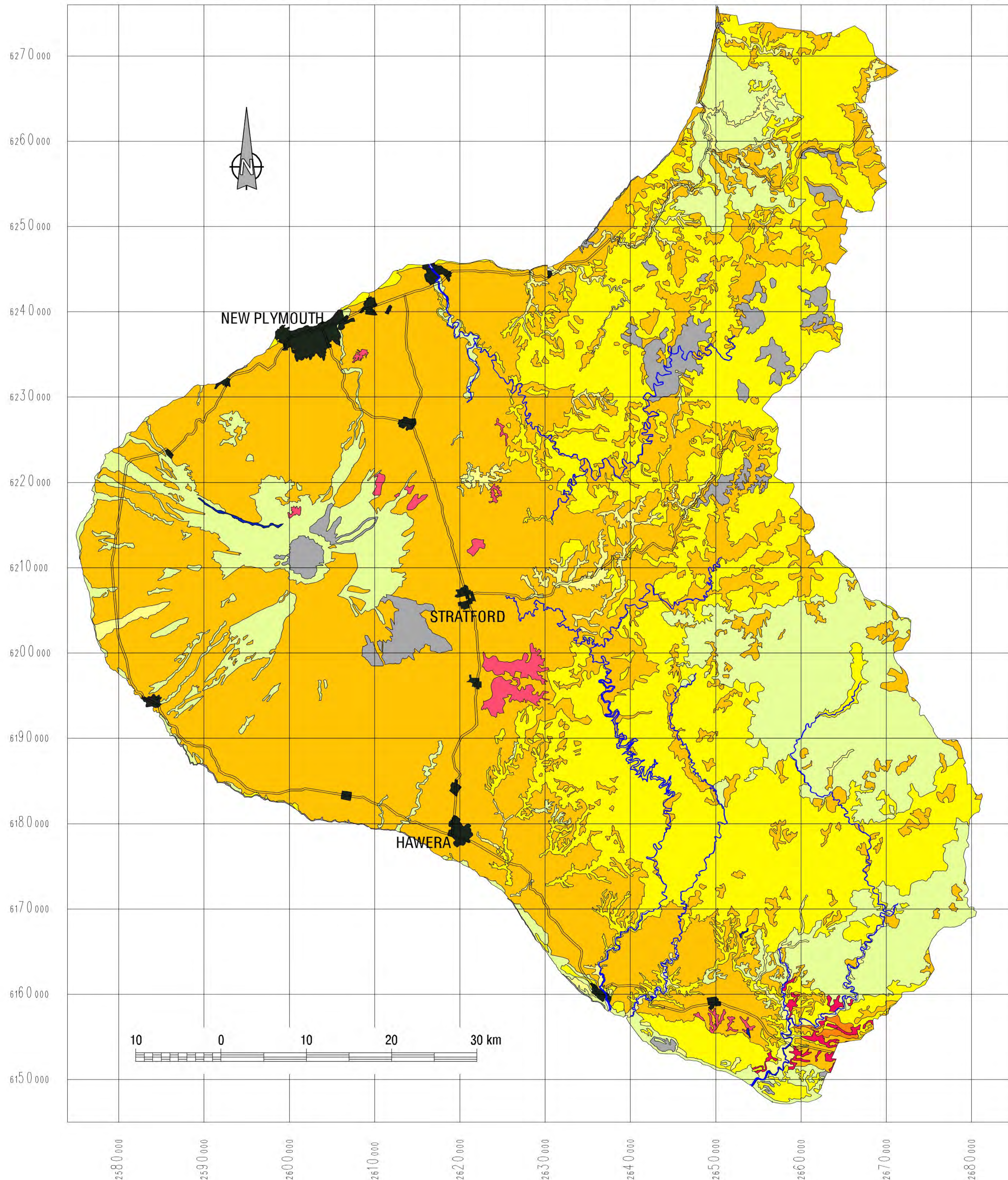


TOTAL LEAD 0-20cm IN SOILS OF TARANAKI REGION



LEGEND

Total Lead (mg/kg on oven-dry weight)

0-20cm depth

| | | |
|--------------------------------|--|---------|
| Melanic | | 15-40 |
| Organic | | 5-25 |
| Pallic | | 5-25 |
| Allophanic | | 2-25 |
| Brown | | 2-25 |
| Gley | | 2-20 |
| Recent | | 2-15 |
| Pumice Raw Mountain soil | | No data |

See accompanying notes on soil groupings and ranges of background metal concentrations

Topographic Reference

- Major roads
- Major hydrological features
- Urban



Manaaki Whenua
Landcare Research

© Landcare Research New Zealand Ltd, 2002

Map Reference Code: /data/landcare-jobs/mas/heavymet/leadnzsc20.gra