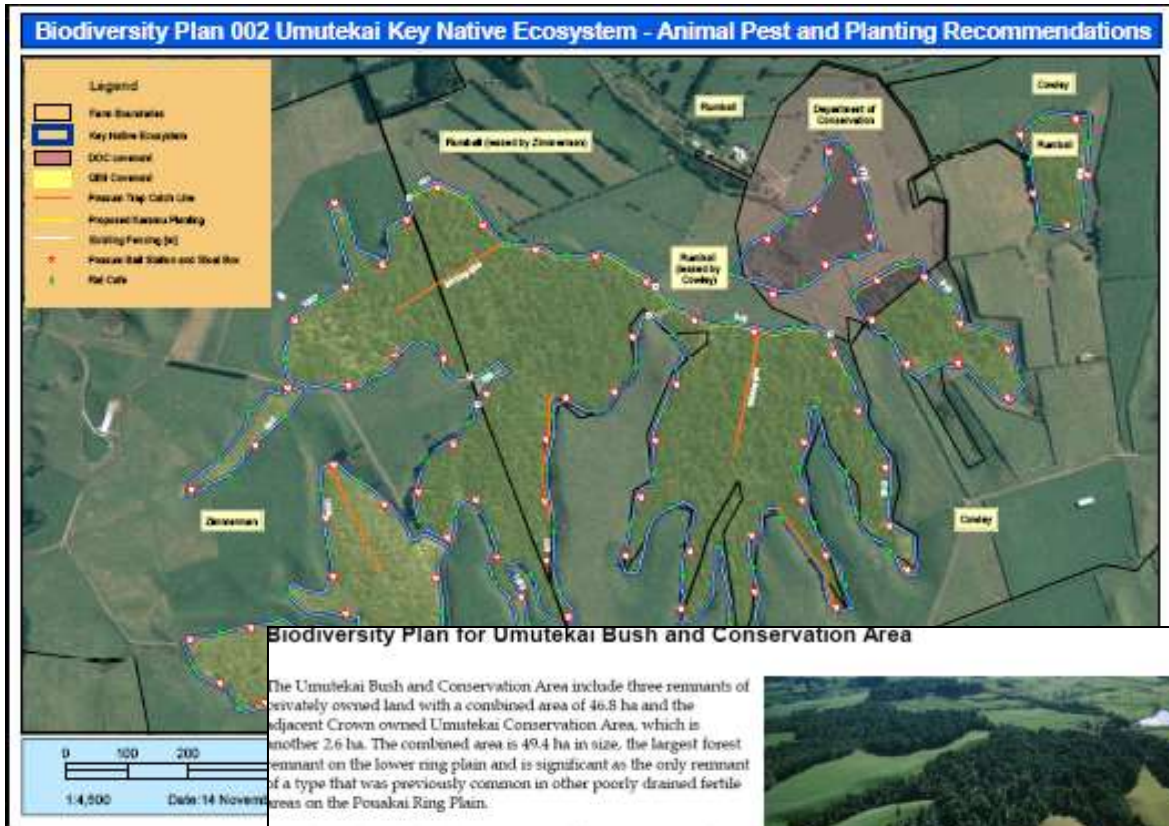


Appendix IX: Example of a Biodiversity Plan



Biodiversity Plan for Umutekai Bush and Conservation Area

The Umutekai Bush and Conservation Area include three remnants of privately owned land with a combined area of 46.8 ha and the adjacent Crown owned Umutekai Conservation Area, which is another 2.6 ha. The combined area is 49.4 ha in size, the largest forest remnant on the lower ring plain and is significant as the only remnant of a type that was previously common in other poorly drained fertile areas on the Pouakai Ring Plain.



Umutekai Bush includes a large semi-coastal forest remnant on the Pouakai Ring Plain with an adjoining lake in the Conservation Area. The site is located between the headwaters of the Manganaha and the Mangemahi streams (two small tributaries of the Waiwhakaho River).

Objectives of the Plan

- To maintain possum and other pests below a level at which they are likely to cause adverse effects on the values of the site.
- To maintain pest plants at a level below which they cause adverse effects on the biodiversity values of the site.

Recommended Actions to safeguard the special values at this site:

	Actions	Who?	Funding/Resources?	Timeframe
Formal agreement	Majority of private areas covenanted by QEII Covenants.	QEII		Completed.
	DOC land (2.6ha) conservation area.	DOC		
Animal pest control: possums	Complete legal survey and registration of area of bush mistakenly overlooked during the covenanting process.	QEII	QEII	February 2008
	Monitor possum levels in bush (and rat numbers at the same time)	TRC Pest Management Officer (PMO)		Annually
	If possum levels > 5% RTC undertake knockdown control to bring population down to sustainable level.	TRC PMO	TRC pest fund.	By 30 April 2008
	Install bait stations at 100m spacing	TRC PMO	TRC pest fund	By 30 April 2008
	Maintain possum levels at < 10% RTC by maintaining bait in bait stations and on adjoining farms to create buffer.	Landowners		Ongoing
Animal pest control: predators and rats	Maintain possum levels at < 5% RTC on adjacent conservation area.	DOC		Ongoing
	Install sloat boxes (DOC250s) at 100m spacing around perimeter of bush and rat cales between traps.	TRC PMO	BCF.	By July 2008
	Check sloat boxes and rat-cales monthly, particularly spring, summer and autumn. Empty traps, rebait rat cales.	TRC PMO	BCF. TRC pest fund.	Sept 2008- January 2009
	Install sloat boxes (phase 2) around road to create buffer area. (years 2 and 3 of project)	TRC PMO to coordinate	BCF	2009-2010
	Contact key conservation groups to inform, gain support and generate interest in assisting with pest management at this site to generate pool of volunteers to help trap clearance.	TRC PMO		2008
Pest plants.	Initial knockdown of woolly nightshade and other weeds identified in weed plan.	TRC Land Management Officer (LMO) to coordinate	TRC-EEG QEII	Early 2008
	Ongoing weed maintenance- hand pulling of small plants that spring up post initial control	Landowners	QEII can supply herbicide	Ongoing
	Monitor pest plant distribution	TRC and QEII		Annual assessment
fence from stock	Observe fence problems	Land owners or	Notify TRC or QEII	As required