



predators



coastal and lowland indigenous forest



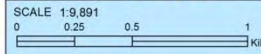


Mustelids –Stoats, weasels and ferrets

Whitecliffs

Legend

- Box traps
- Tracks



DATE: 10 June 2014



Cadastral information derived from Land Information New Zealand. CROWN COPYRIGHT RESERVED. Information shown is the currently assumed knowledge as at date printed. If information is false, conform with the authoritative owner. E & O.E.
The information displayed has been taken from Taranaki Regional Council databases. It is correct to the best of our knowledge. Copyright is held and retained by the Taranaki Regional Council. This map may not be reproduced or transmitted to any other party in any form without the written permission of the Taranaki Regional Council. Aerial photography was flown in 2012.

Parininihi Project, April 2015: Location of possum and stoat traps

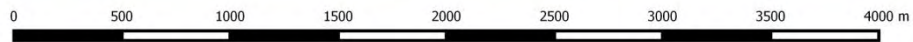


Legend

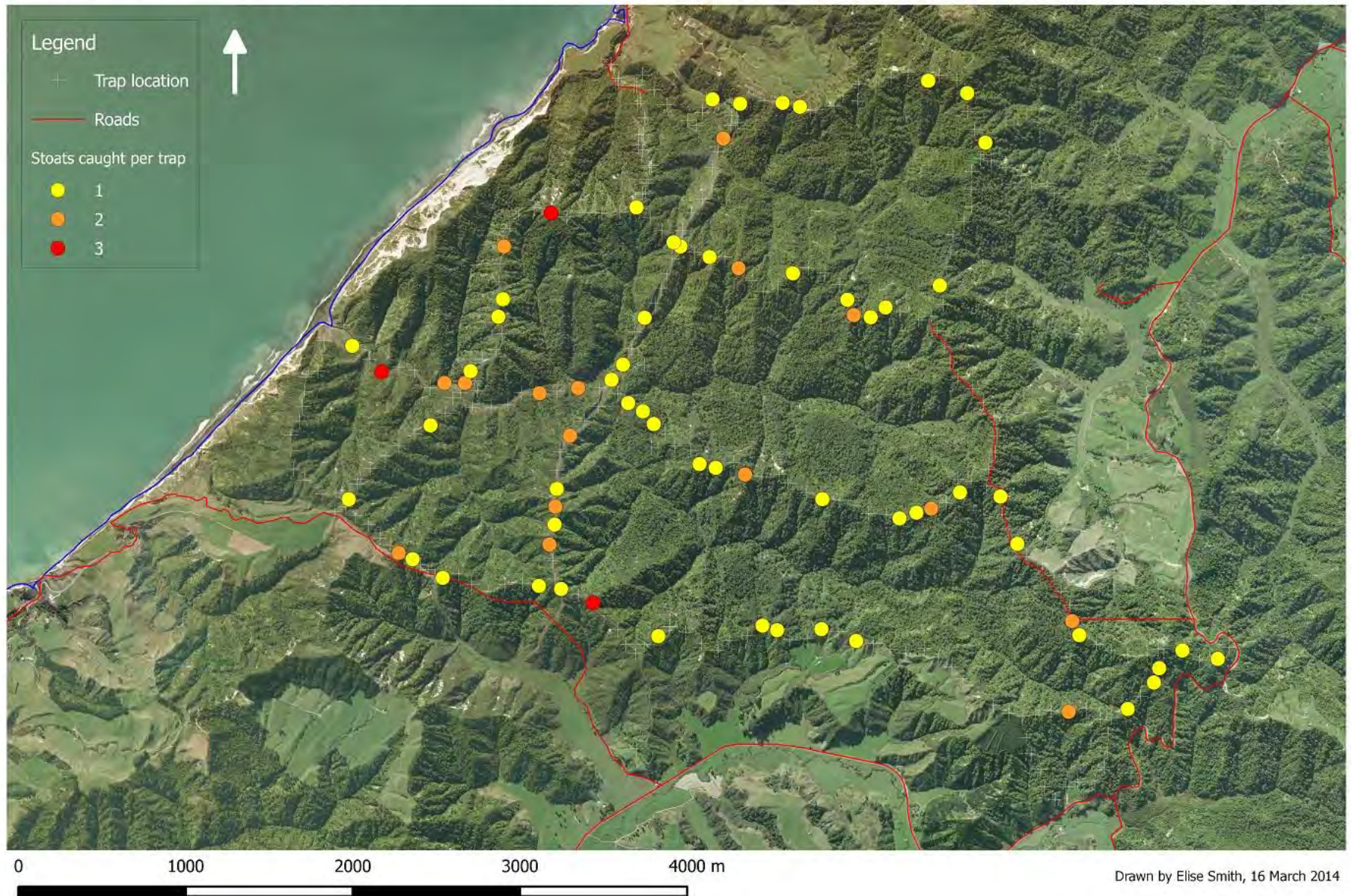
- ▲ Possum traps
- Stoat traps

Roads ↑

- Minor
- SH3



Parininihi Trapping Project 2011 - 2012, Stoats





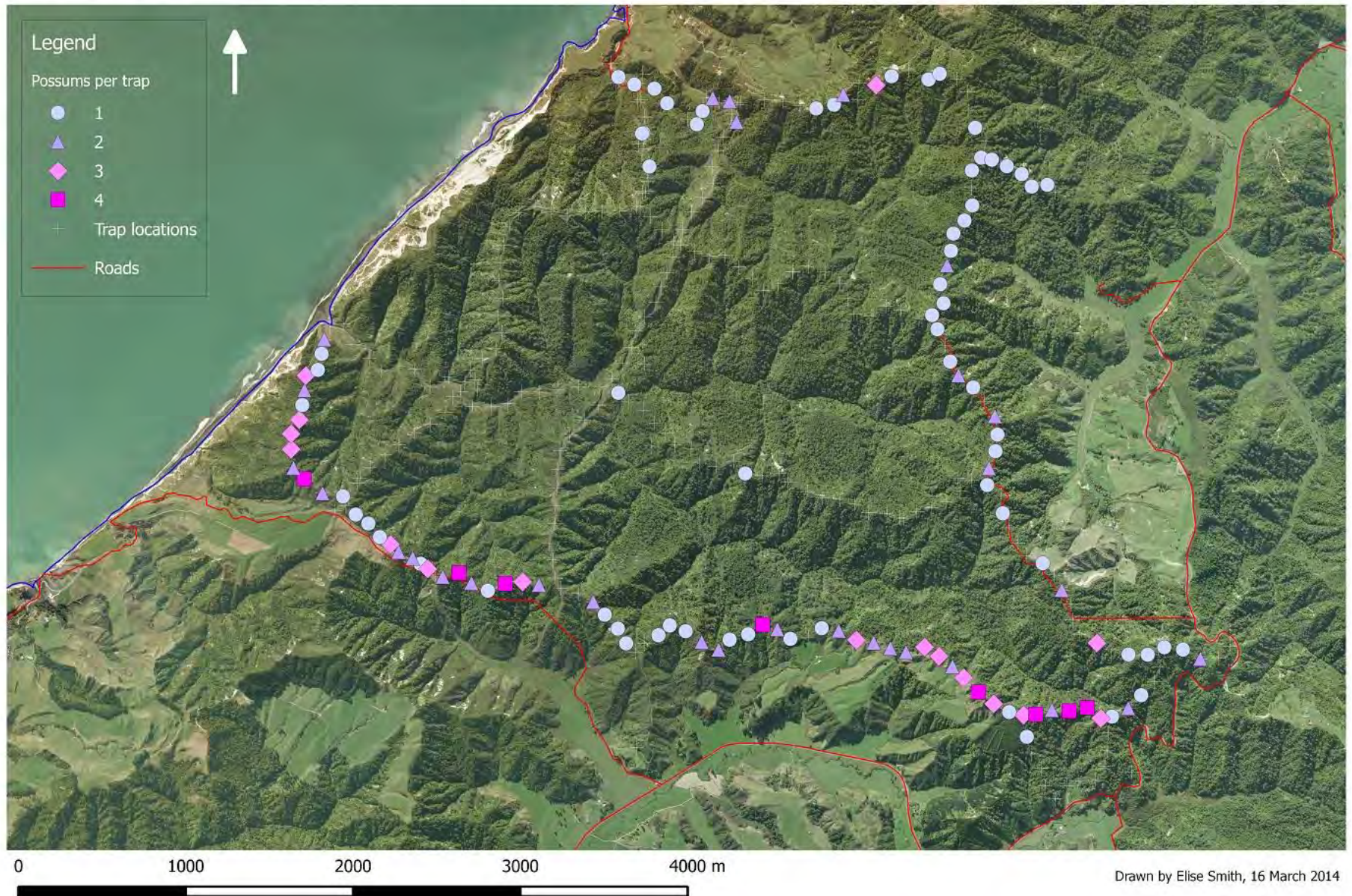
Possums

Parininihi Project, April 2015: Location of possum and stoat traps



0 500 1000 1500 2000 2500 3000 3500 4000 m

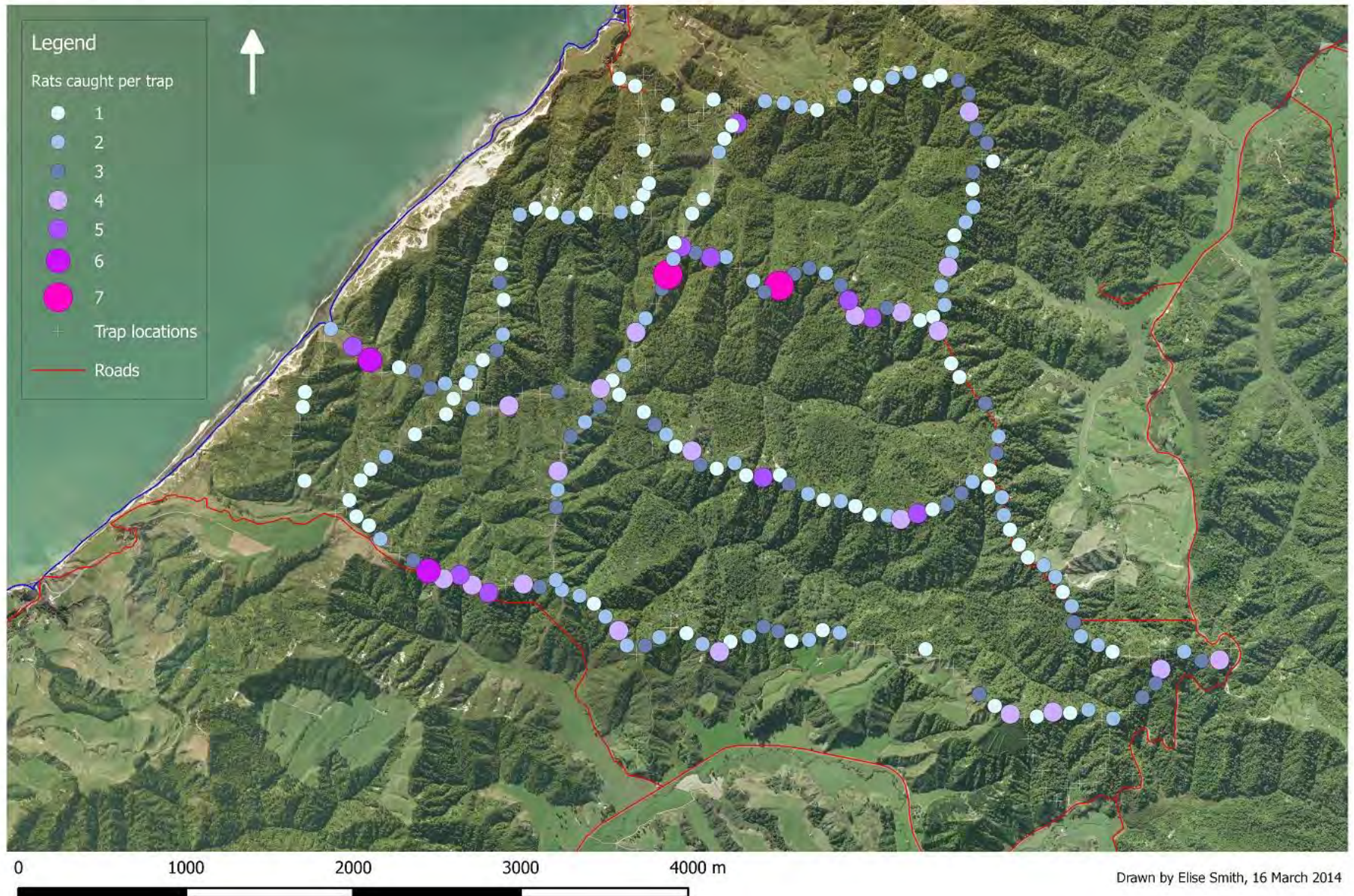
Parininihi Trapping Project 2011 - 2012, Possums



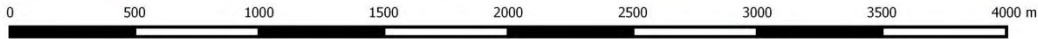


Rats

Parininihi Trapping Project 2011 - 2012, Rats



Parininihi Project, April 2015: Location of bait stations





Cats



