

Mapping and Data Analysis

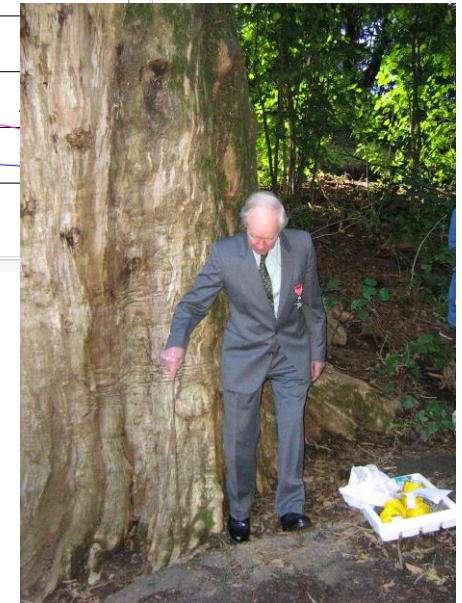
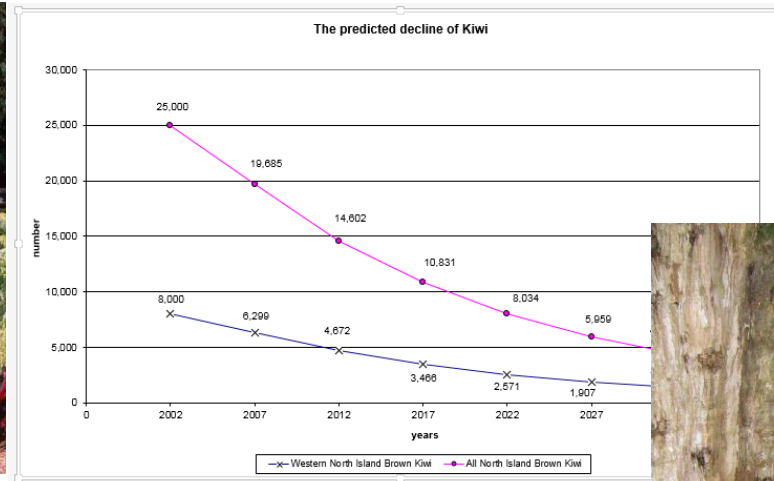
M.A.I.N. Trust NZ

Mapping, Analysis and Information Network Trust, New Zealand



Predator Control Workshop, 1st November 2015

Taranaki groups with a purpose



In order to evaluate success of the projects, we need to know

- what the situation is now
- what difference we are making.

So we need to keep records

Field notes

Scanned documents

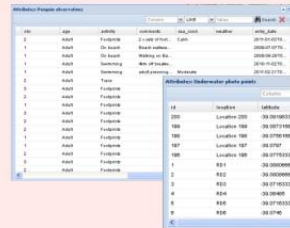
Digital documents

- * word processed
- * spreadsheet
- * database

Images

Sound files

Videos

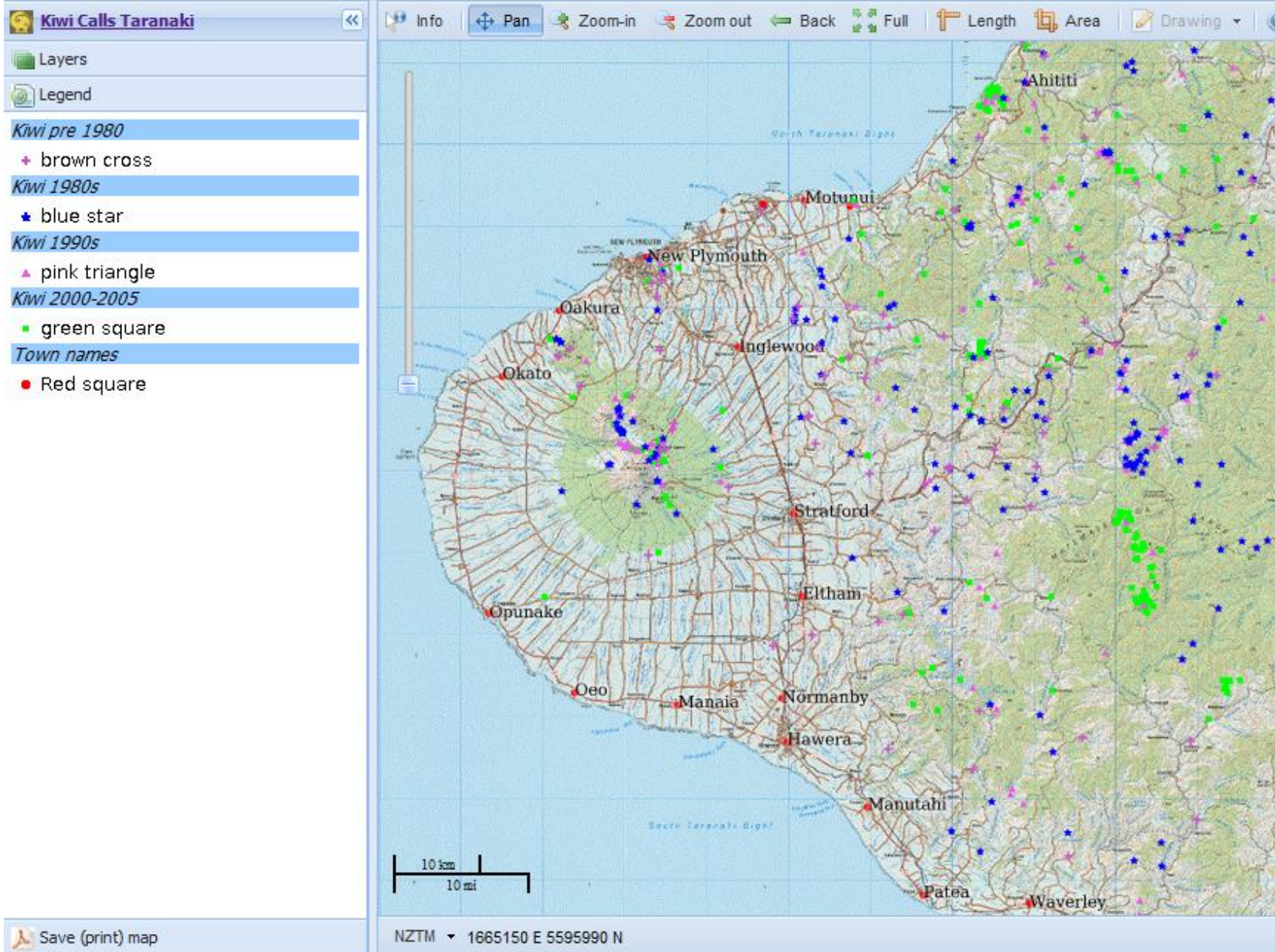


So where should we focus our efforts?

- Projects are multi-species, what are we protecting
- Where are these species?
- What are the threats?
- Which measures work best?

Some examples

An analysis of Kiwi records and pest-trap data collected by Taranaki Kiwi Trust ten years ago



M.A.I.N. Trust NZ

Mapping, Analysis and Information Network Trust, New Zealand



www.main.net.nz

Predator Control Workshop, 1st November 2015

How have things changed over time?

Often we forget, or the numbers on a spreadsheet just don't make that much sense.

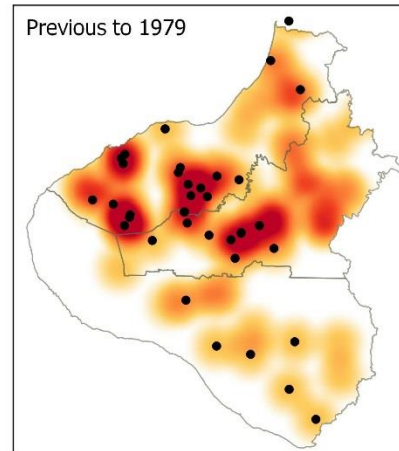
For example, these heatmaps are a way to understand the data from the previous slide - the distribution of kiwi has changed.

Are these records really comparing like with like?

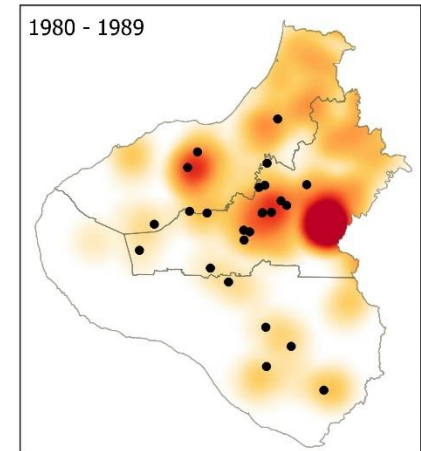
We only have data up until 2005.

The distribution of Kiwi in Taranaki

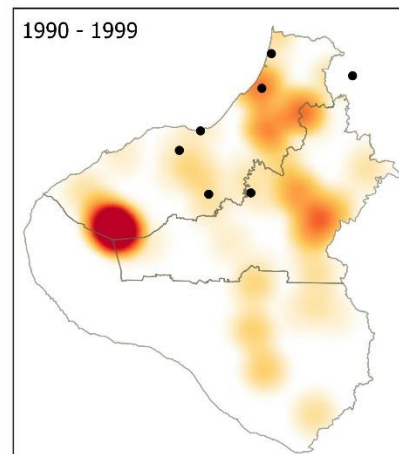
The heatmaps are based upon observations in different periods. Details show the number of reports and categories. Physical sightings = black dot.



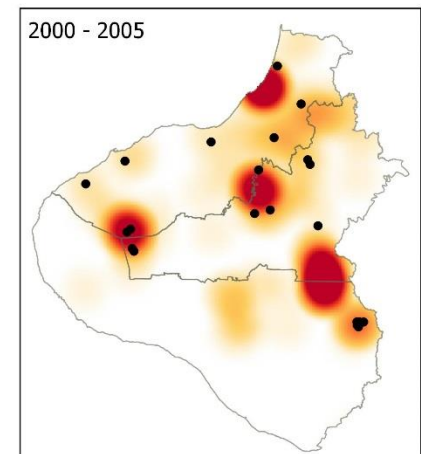
Total reports = 74
Seen = 38 51%
Sign = 6 8%
Heard = 30 41%



Total reports = 158
Seen = 25 16%
Sign = 9 6%
Heard = 124 78%

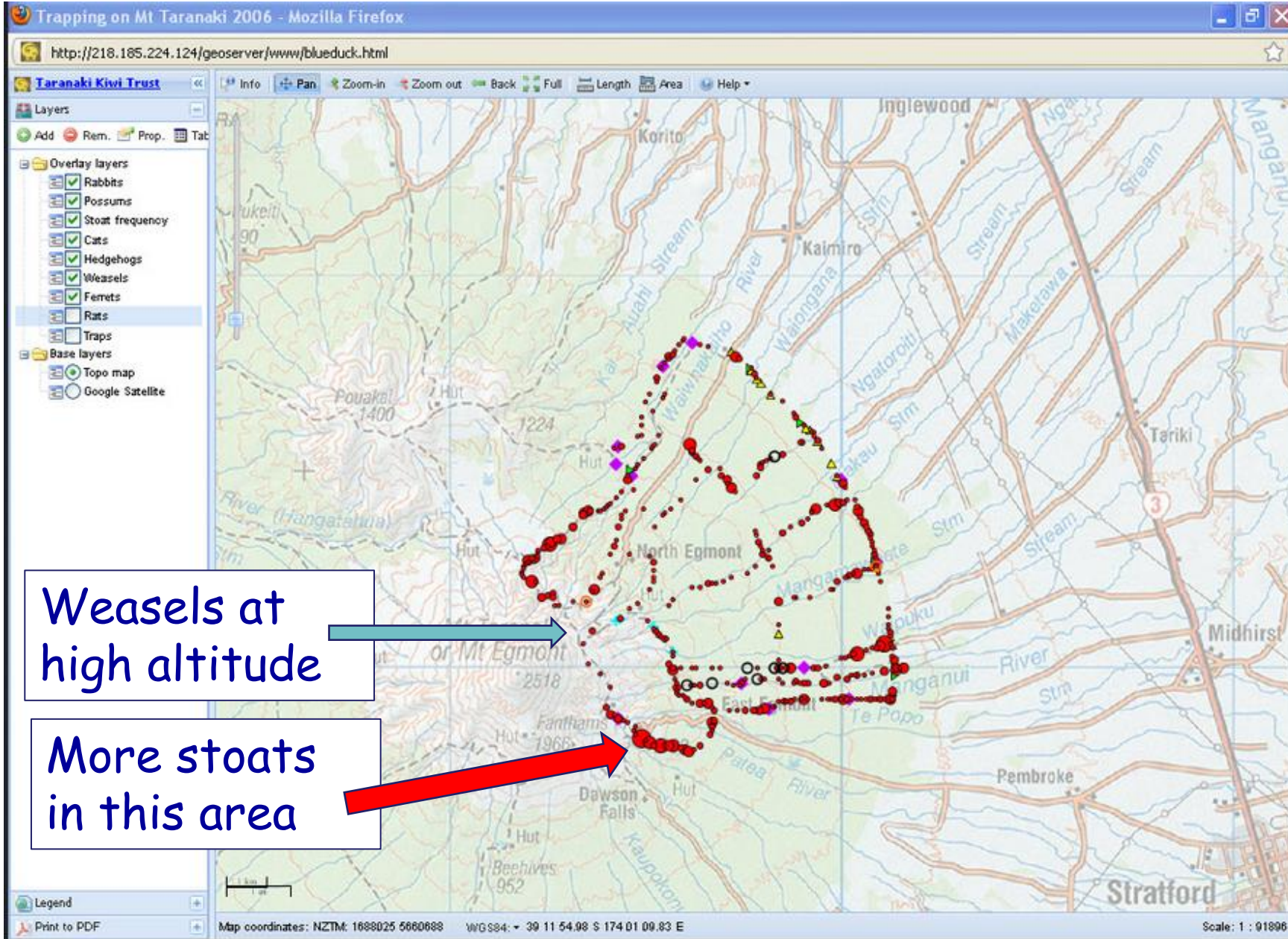


Total reports = 117
Seen = 7 6%
Sign = 13 11%
Heard = 97 83%



Total reports = 232
Seen = 23 10%
Sign = 18 8%
Heard = 191 82%

MAIN Trust NZ www.main.net.nz



Once you have the data...

What do you do with your data ?

- Do you enter it to an Excel or Access?
- Give it to someone else to analyse?
- See the results on a graph - or map?
- Share the results with others?

A data revolution

- Geographic Information Systems with online data collection
- Click-button analysis tools to map and make graphs of results
- Print maps, download results
- Share relevant information

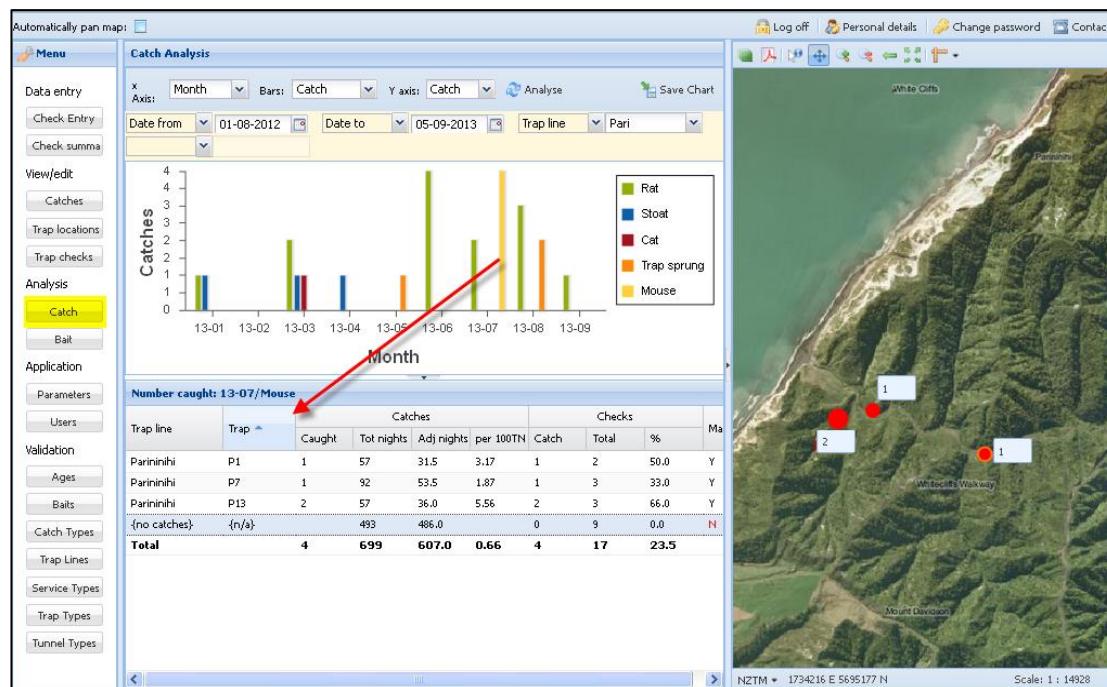
How many pest species?

Where?

What bait was used?

Who was the trapper?

What is the catch rate?



Trap locations

New Edit Delete Line: Download Print

Trap	Trap line	Last check	Set	Bait	Tunnel type	Trap type
MP 17	MP	04-09-2015	Y	Egg and peanut butt...	Single entry wooden...	DOC 200
MP 18	MP	04-09-2015	Y	Possum lure - Goodn...		A12 Possum
MP 19	MP	04-09-2015	Y	Egg and peanut butt...	Single entry wooden...	DOC 200
MP 20	MP	04-09-2015	Y	Egg and peanut butt...	Single entry wooden...	DOC 200
MP 21	MP	04-09-2015	Y	Possum lure - Goodn...		A12 Possum
MP 22	MP	12-10-2015	Y	Egg and peanut butt...	Single entry wooden...	DOC 200
MP 23	MP	12-10-2015	Y	Egg and peanut butt...	Single entry wooden...	DOC 200

M.A.I.N. Trust NZ

Mapping, Analysis and Information Network Trust, New Zealand

www.main.net.nz

Predator Control Workshop, 1st November 2015

But there is more....

- Because each project has specific questions and solutions, customise it to suit you
- There is a vast library of mapping resources for you
- The software is free



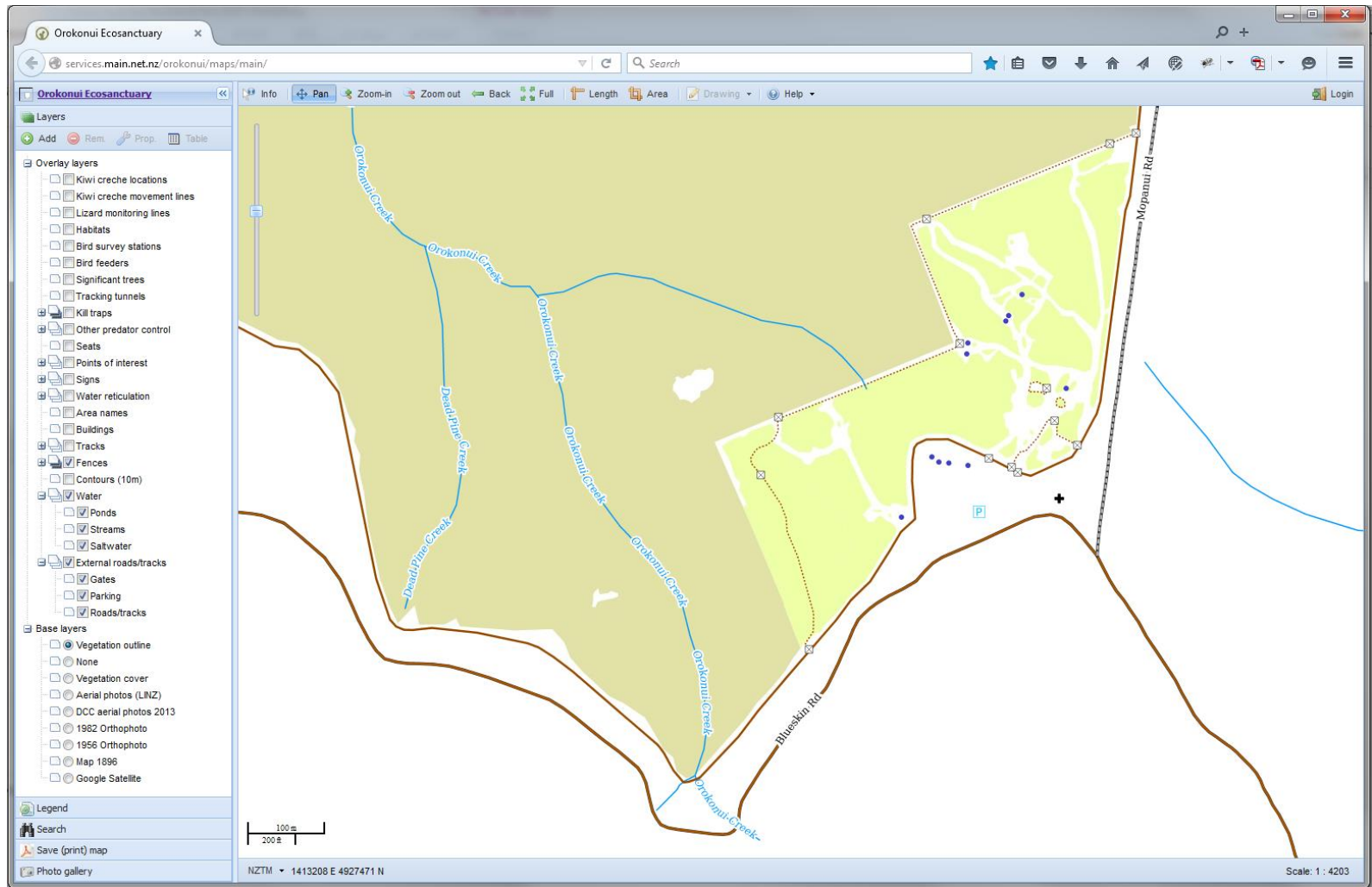
What suits you?

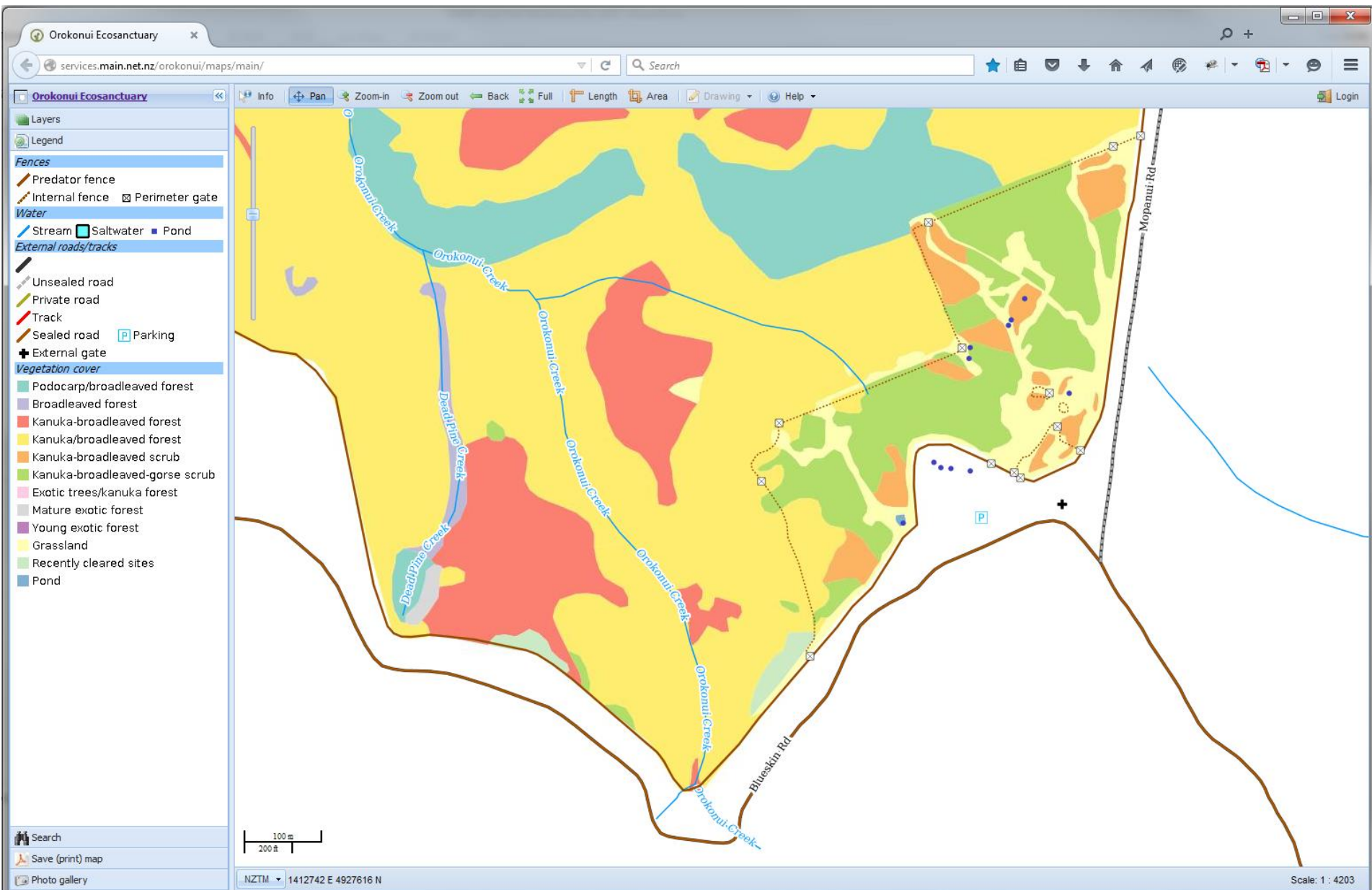
Maps on your own desktop (particularly if you do not have a fast telephone connection)

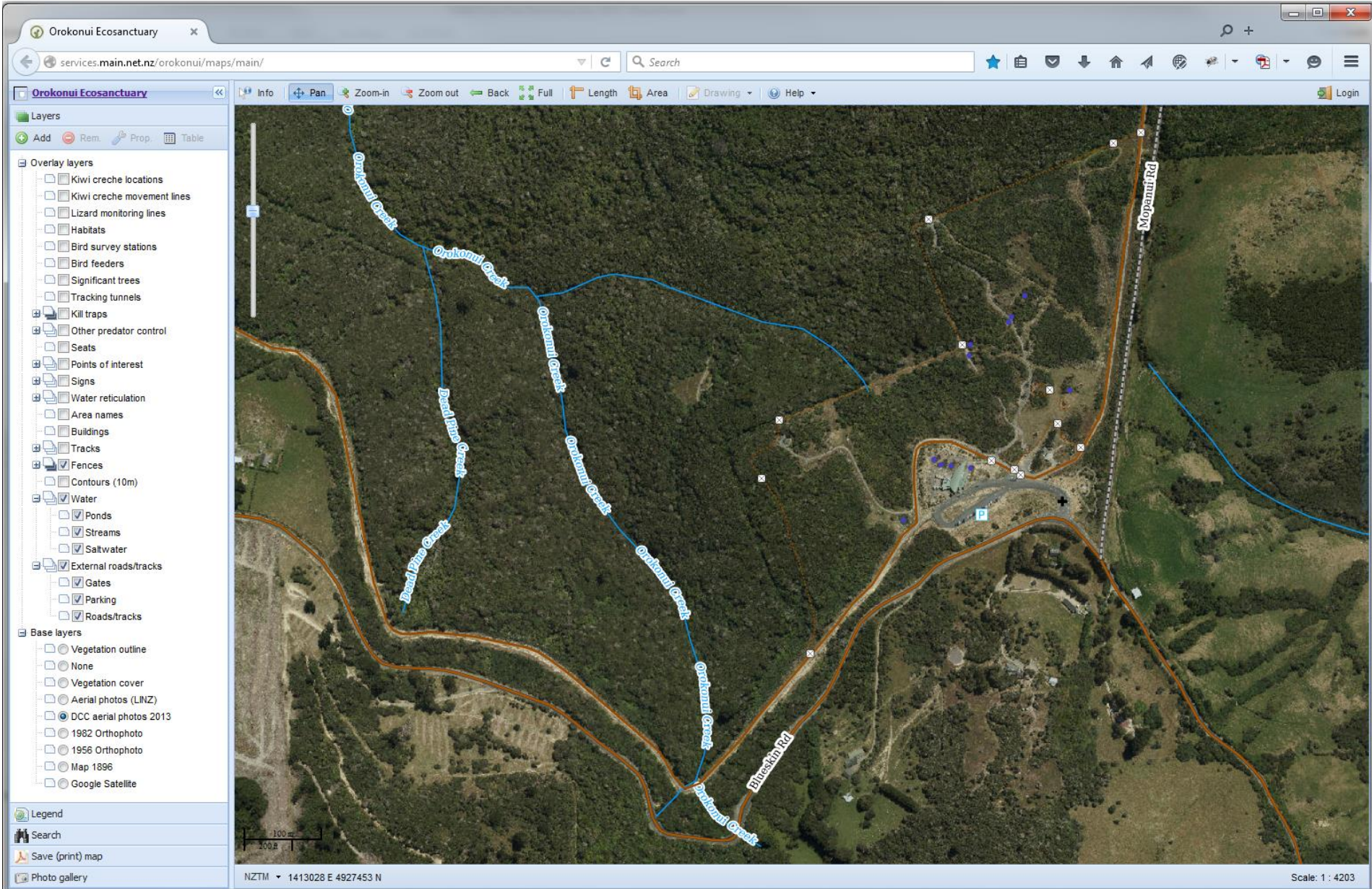
And Or ...

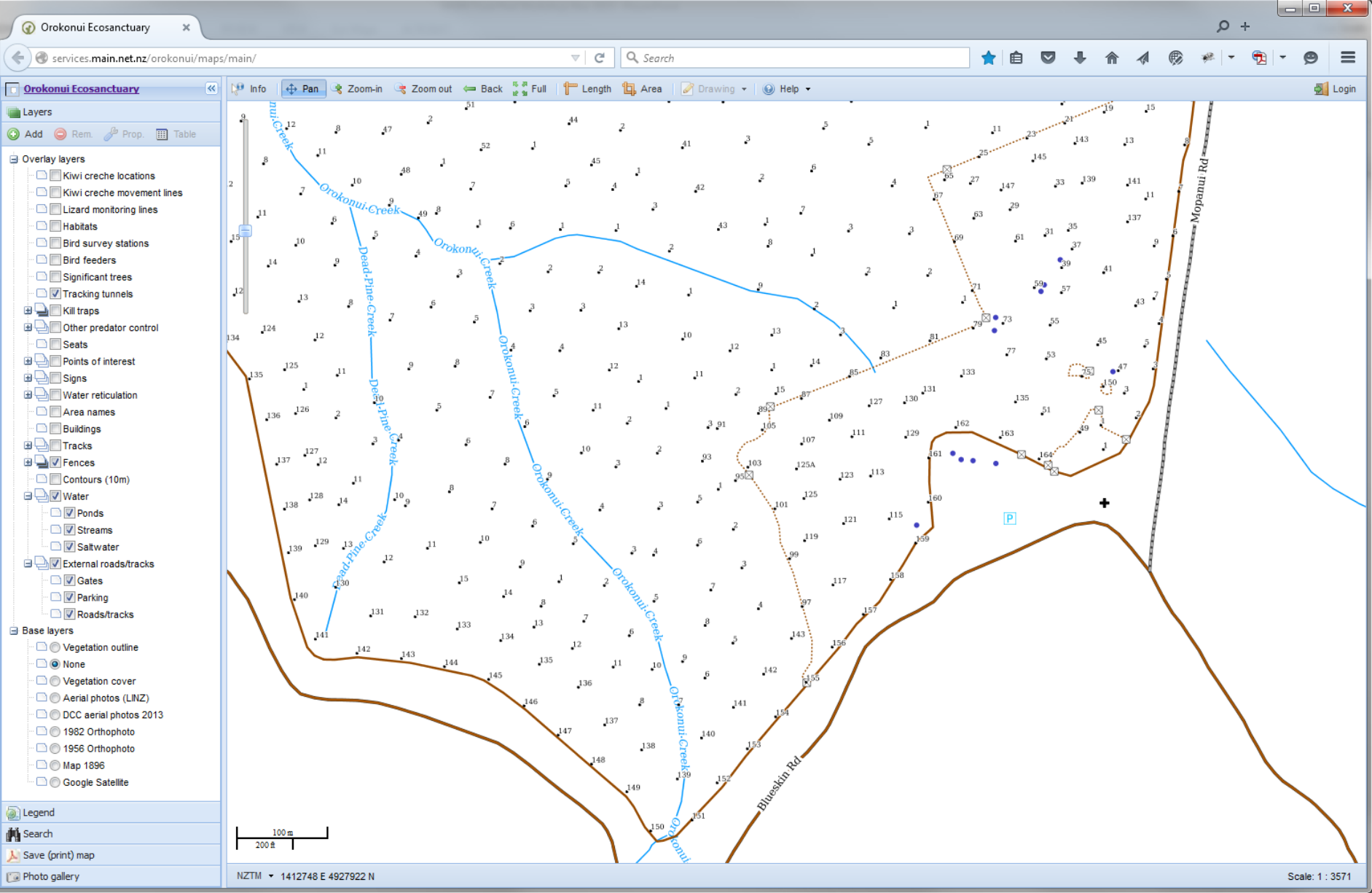
Using online systems - can be private and with specific project information

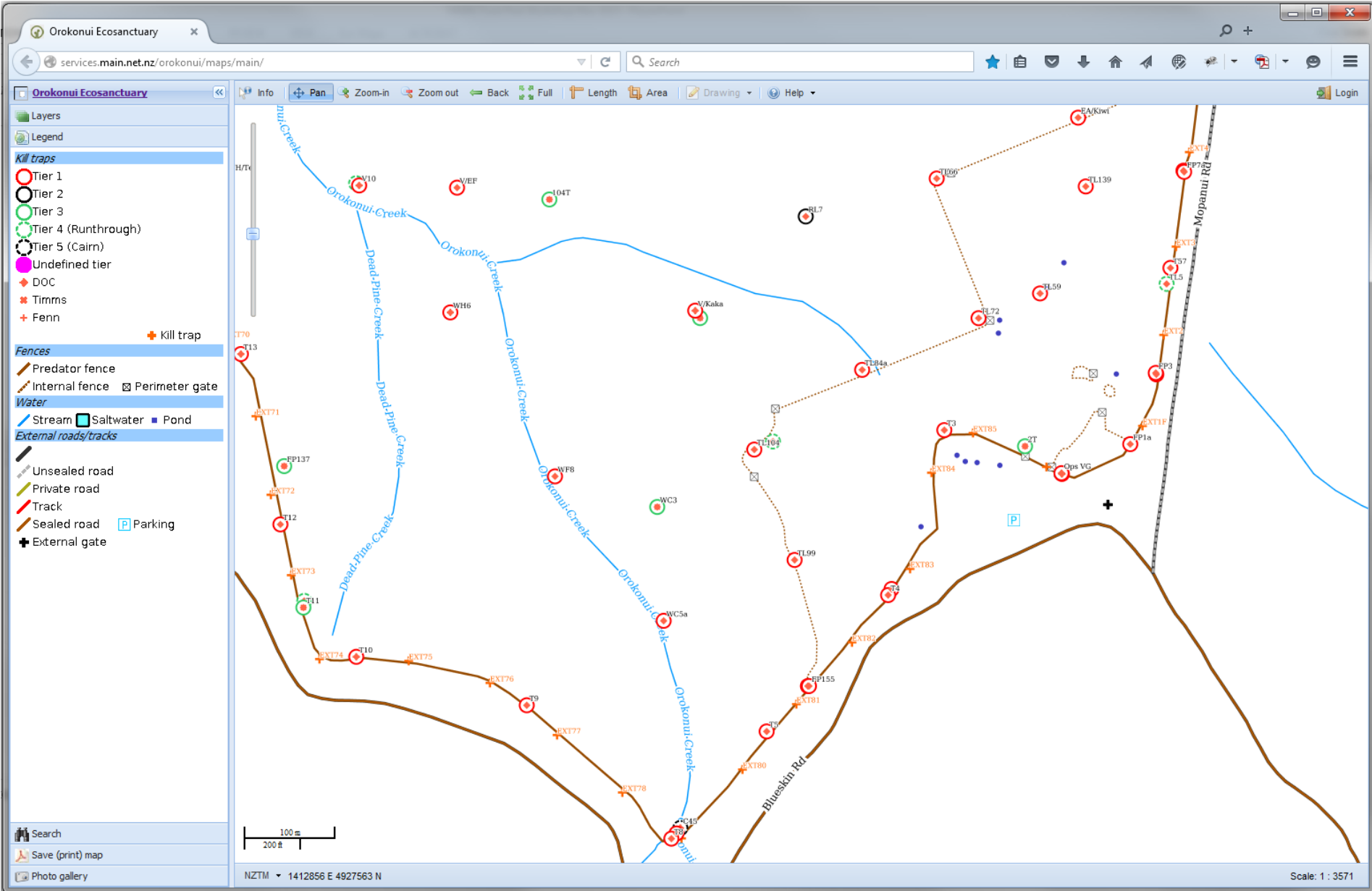
Orokonui Ecosanctuary

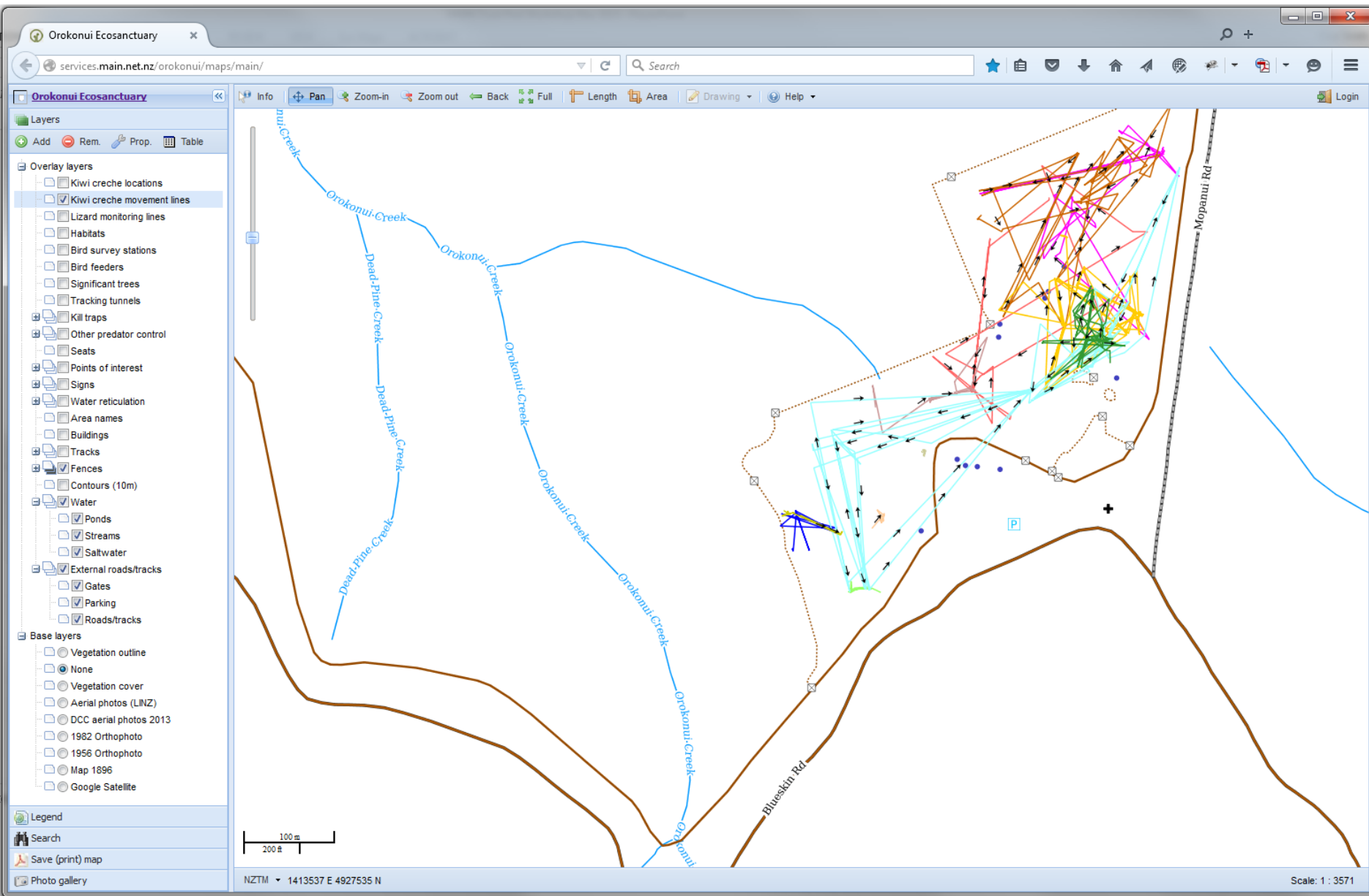














For more examples

- Visit our website www.main.net.nz . See the video "Easy As" - how data entry works with the online 'Pest Mapper', providing instant analysis and downloads.
- Orokonui Maps - kiwi creches, tracked kiwi chicks, a photo gallery, a mobile-friendly map with GPS tracker, and a private 'Pest Mapper'.

<http://services.main.net.nz/orokonui/maps/>

- Email us on main@main.net.nz