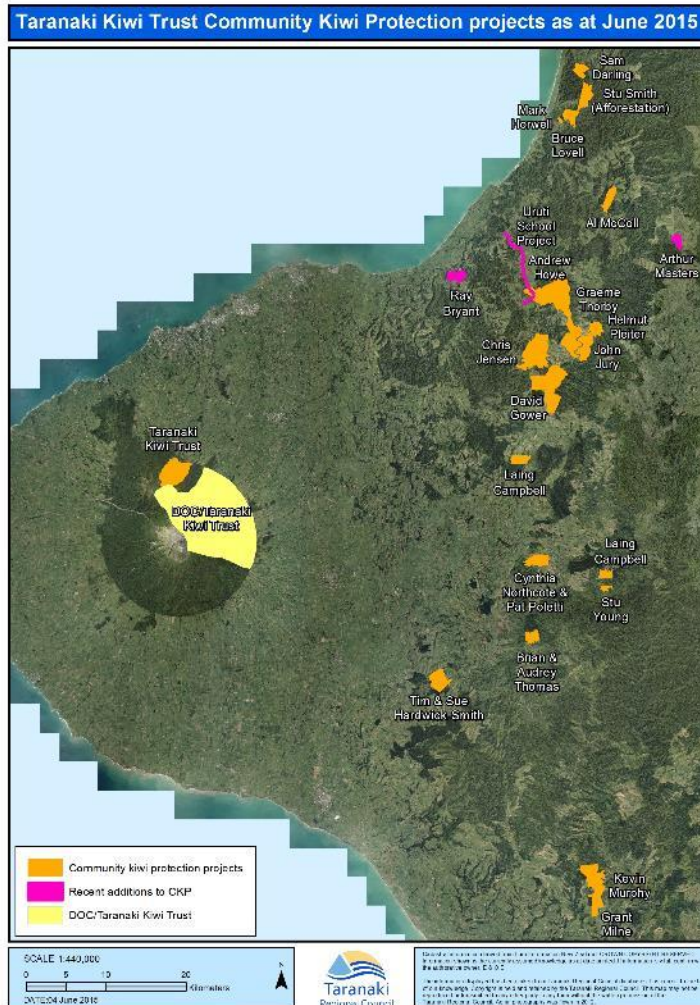




TKT
Community Kiwi Protection
programme
(CKP)

CKP projects

Predator control on private properties



- Well-established programme
- Running for over 10 years
- Requires kiwi presence
- Willingness of landowners

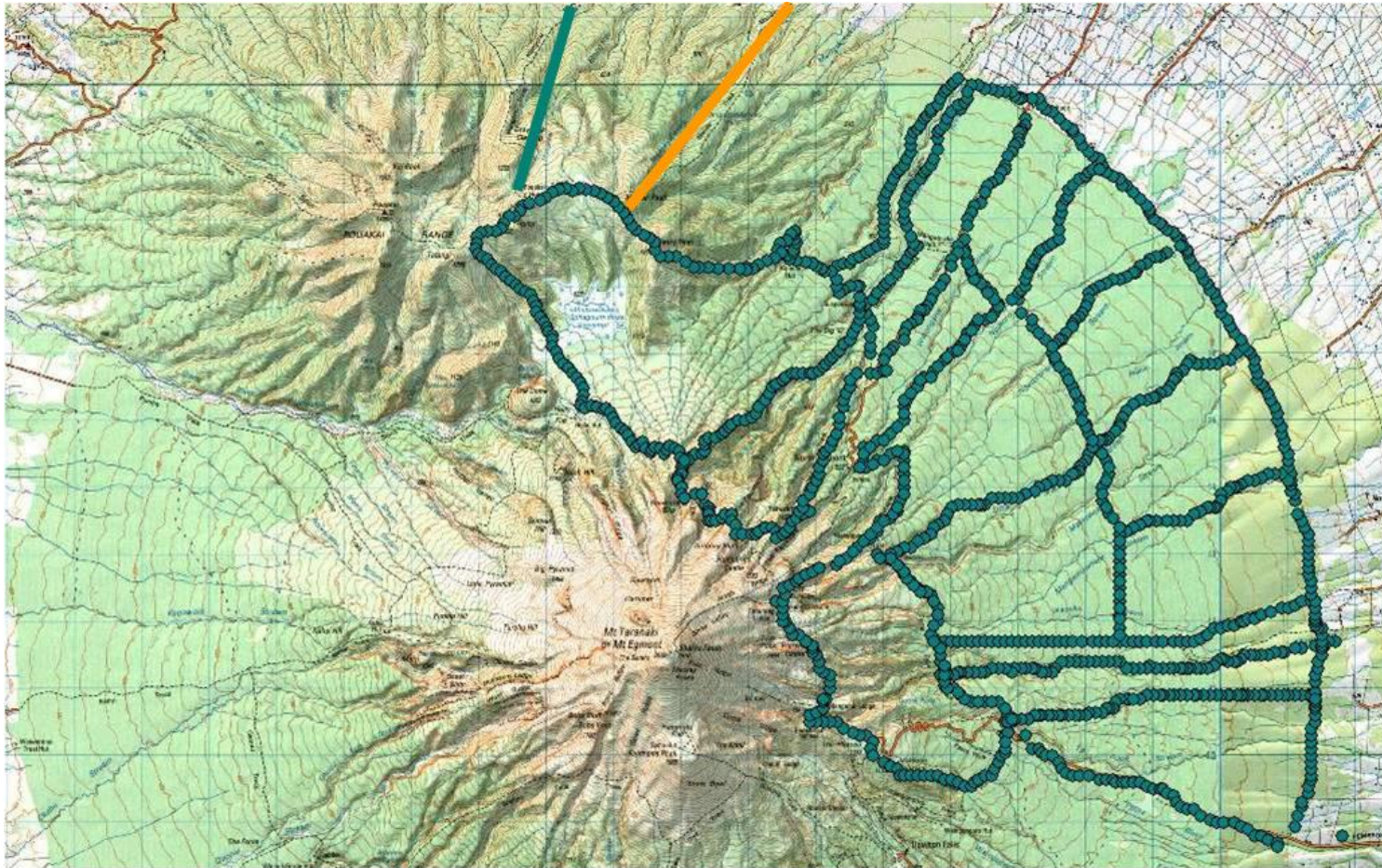
TKT provides tools and know-how to landowners, enabling them to make a positive difference



Egmont National Park projects

1. Partnership with DOC with trap network & Operation Nest Egg. Established 2003
9,000 ha protected, 72 kiwi released
2. Community traplines - Mangorei & Maude tracks. Supported and maintained by enthusiastic volunteers

ENP project



CKP projects require

- Long-term commitment of landowners / communities
- Tremendous input of volunteer time

Both CKP & ENP projects provide protected sites for future release of kiwi from our joint Taranaki Kohanga Kiwi at Rotokare breeding project



Control of other predators

- Avian aversion training for dogs /
- Raising dog-owner awareness

- We encourage landowners, other agencies & community groups to carry out control of other predators and pests... rats, cats, goats & pigs that affect kiwi habitat

Look towards improved technology

- such as A24s, rat, cat control.... Options?



Special projects

1. Trap data collection of environmental variables – identification to increase trap-catch rates.

Analysed by Taranaki Regional Council Feb 2015

2. Baseline data collected in 2014 of kiwi presence at existing CKP sites – use of night recorders for surveying & substantial volunteer time

** Special thanks to Jenny Kerrisk and Stu Young for their immense input

Future - Larger Protective Networks

- Aim to expand established networks
- Extend to neighbouring areas
- Work at both individual (landowner) & community-level
- Eg Mangorei & Maude tracks (trampers), Uruti School, Mokau School
- Increase types of predator control – new tools and additional predators

Uruti school

- recently won a TRC Environmental Award:
Environmental Action in Education

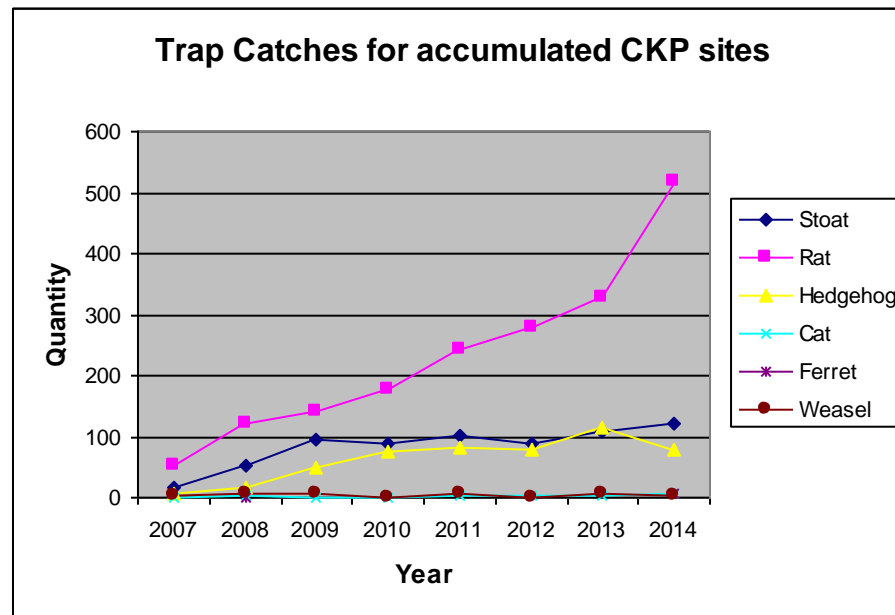


Ongoing work with other groups & agencies

- TRC – adjacent protected areas
- DOC – joint ENP project 9,000 ha
- Rotokare – joint Kohanga Kiwi project
- Schools – community projects
- Community groups

Achievements

- Accumulated protected area is over 12,000ha (not incl ENP project)
- Predators caught – 3,400 inc 700+ stoats



Challenges

- Funding – for continuation of a solid valuable programme
- Natural weather events – loss of traps, land and access
- Maintaining landowner enthusiasm for trap checking





Future

- On-going support from other groups and agencies to widen networks & target species – cats, rats?
- DOC200s just the start
- Demand for these projects continues
- Expansion – of networks and control measures