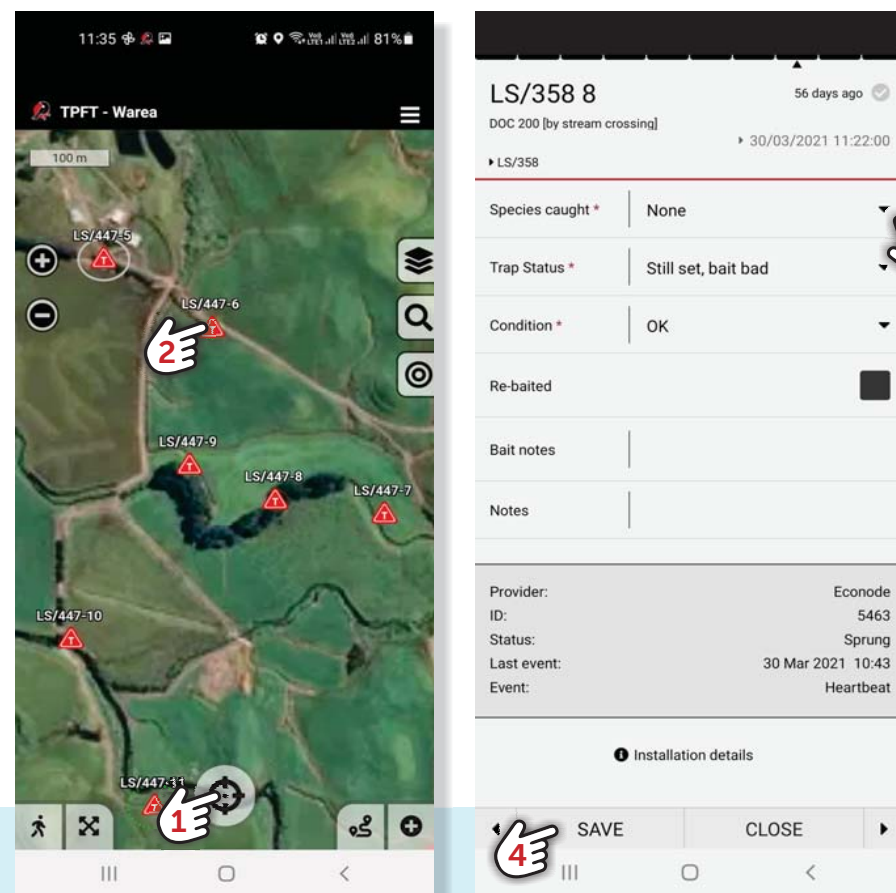


## Entering catch data



- 1 Your traps should already be loaded and by clicking 'current location' you'll see the traps on your property.
- 2 Click on the trap you want to enter catch data for.
- 3 Enter species caught and whether the trap was re-baited and the bait type. You may like to add other observations.
- 4 Click and hold 'save' - the trap with updated data will have a green outline.



Please record all trap checks, even if nothing is caught. This will help us measure success.

## FAQs

### What bait is best and where do I get it?

Salted rabbit meat is the best all round but fresh rabbit is better if replaced very frequently. Eggs, sardines and salted beef are also good alternatives as well as many specialist stoat lures. Please contact us if you need help choosing or obtaining bait.

### How often should I check my traps?

You should check and re-bait traps monthly, more often if you can.

### What if I want to move the trap or I am having problems with it?

Please contact us on [pftaranaki@trc.govt.nz](mailto:pftaranaki@trc.govt.nz) or 0800 736 222. We're always happy to help.



Towards Predator-Free  
Taranaki

# Trapping guide



*Keep this guide handy so you know how to reset traps and record trap checks.*

## Health and safety when using traps



**Keep fingers clear** of the trap mechanism at all times



Make sure the **lid on the DOC traps is screwed down** at all times so children and pets can't access the trap, as these have a powerful trap mechanism.



**Wear gloves** at all times when handling traps



The A24 trap is still live even when it's been de-gassed.



## How to reset your PodiTRAP - MONTHLY



Pull back firmly on the trap setting handle. With a stick, push down on the treddle plate - keeping grip of the setting handle. Slowly reclose the handle.



To unclip the lid, pull the cover off the catches behind the entrance tunnels.



Best placement for the bait is high behind the springs (1).

Watch instructional videos at [www.trc.govt.nz/towards-predator-free-taranaki](http://www.trc.govt.nz/towards-predator-free-taranaki)



Put your foot on the front screws and pull the setting arm all the way back. Slowly move the setting arm forward until you feel it load on the catch.

## How to reset your DOC250 or DOC200 - MONTHLY



Unscrew the trap's wooden lid, ensure the trap is unset and place bait on nail pedestal.



Hold the box firmly (we recommend placing a knee on the box) and carefully pull back the wire setting loop. You may wish to stake the box to secure it.



OR with a setting tool place the circle end over the top of the trap and the hook end on the wire setting loop. Continue pulling past the top of the trigger arm.



**SLOWLY** release pressure allowing the bottom of the trigger arm to catch on the "sear".

Watch instructional videos at [www.trc.govt.nz/towards-predator-free-taranaki](http://www.trc.govt.nz/towards-predator-free-taranaki)

## How to reset your A24 EVERY 4-6 MONTHS



### Power/pressure the trap

Take the gas canister and remove the black cap. Be careful to keep the screw thread clean and free of debris. Screw in the canister until firmly sealed. Hand tighten only.



### Test fire your trap

To test fire the trap, reach a pen or twig down through the top of the trap and push sideways on the leaf trigger. The striker will discharge with a bang and then retract. Keep your hands clear of the shroud entrance and always treat the trap as live.



### Place automatic lure pump (ALP) into shroud cap

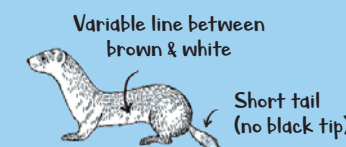
Firstly remove the 10c piece to activate the pump, with the ALP activated, use your thumbs and forefingers to shape the ALP into the shroud cap's form. It will be a tight fit. Be careful not to push it in too far. Align the ALP so that the skirting sits about 3mm proud of the shroud cap rim so it can screw into the lure cradle thread.



### To bait the trap

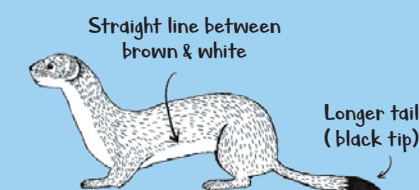
Remove the ALP lid: a small amount of lure may be forced out, that's fine. Use the excess lure as pre-feed by wiping it below the trap to immediately attract any passing pests. Lightly place the shroud cap with the ALP into the metal thread. Once the ALP is engaged into the lure cradle, secure the shroud cap onto the trap. The ALP is now set and active!

## Guide to identifying mustelids



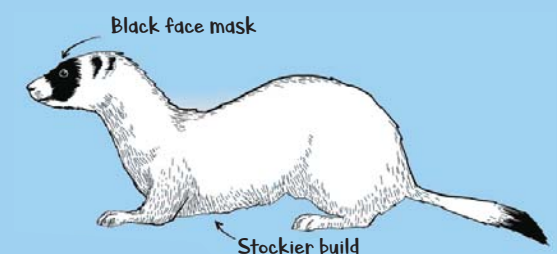
### Weasel

Small sized - 20cm



### Stoat

Medium sized - 30cm



### Ferret

Very large - 50cm