

Todd Petroleum Mining Company Ltd

Kapuni Production Station

Monitoring Programme

Annual Report

2021-2022

Technical Report 2022-42



Working with people | caring for Taranaki



Taranaki Regional Council
Private Bag 713
Stratford

ISSN: 1178-1467 (Online)
Document: 3067536 (Word)
Document: 3096376 (Pdf)
March 2023

Todd Petroleum Mining Company Ltd

Kapuni Production Station

Monitoring Programme

Annual Report

2021-2022

Technical Report 2022-42

Todd Petroleum Mining Company Ltd

Kapuni Production Station

Monitoring Programme

Annual Report

2021-2022

Technical Report 2022-42

Taranaki Regional Council
Private Bag 713
Stratford

ISSN: 1178-1467 (Online)
Document: 3067536 (Word)
Document: 3096376 (Pdf)
March 2023

Executive summary

Todd Petroleum Mining Company Ltd (Todd Petroleum) operates the Kapuni Production Station located on Palmer Road in the Kapuni catchment. This report for the period July 2021 to June 2022 describes the monitoring programme implemented by the Taranaki Regional Council (the Council) to assess Todd Petroleum's environmental and consent compliance performance during the period under review. The report also details the results of the monitoring undertaken and assesses the environmental effects of Todd Petroleum's activities.

During the monitoring period, Todd Petroleum Mining Company Ltd demonstrated a high level of environmental performance and high level of administrative performance.

Todd Petroleum holds four resource consents for the production station, which includes a total of 36 conditions setting out the requirements that Todd Petroleum had to satisfy. Todd Petroleum holds one consent to discharge stormwater into the Kapuni stream, one consent to discharge emissions into the air, and two consents relating to structures in the Kapuni Stream. Todd Petroleum also hold a further 26 resource consents for production activities at wellsites associated with the Kapuni Production Station.

The Council's monitoring programme for the year under review included four inspections, six water samples collected for physicochemical analysis, one biomonitoring survey of receiving waters, and two ambient air quality analyses.

Receiving water inspections, in conjunction with sampling conducted by both the Council and Todd Petroleum during the 2021-2022 period, showed that the site discharges were not causing any adverse effects in the Kapuni Stream. This was supported by the findings of the macroinvertebrate survey.

There were no adverse effects on the environment resulting from the exercise of the air discharge consents. Ambient air quality monitoring at the Kapuni Production Station showed that levels of carbon monoxide, combustible gases, PM₁₀ particulates, and nitrogen oxides were all below levels of concern at the time of sampling. No offensive or objectionable odours were detected beyond the boundary during inspections and there were no complaints in relation to air emissions from the site.

During the period under review, Todd Petroleum demonstrated an overall high level of both environmental performance and administrative compliance with the resource consents. There were no unauthorised incidents recorded by the Council in relation to Todd Petroleum's activities. The Kapuni Production Station was well managed and maintained.

For reference, in the 2021-2022 year, consent holders were found to achieve a high level of environmental performance and compliance for 88% of the consents monitored through the Taranaki tailored monitoring programmes, while for another 10% of the consents, a good level of environmental performance and compliance was achieved.

In terms of overall environmental and compliance performance by the consent holder over the last several years, this report shows that the consent holder's performance remains at a high level.

This report includes recommendations for the 2022-2023 year, including a recommendation relating to an optional review of consents 0633-3, 4054-6.1, and 9555-1 in June 2023.

Table of contents

		Page
1	Introduction	1
1.1	Compliance monitoring programme reports and the Resource Management Act 1991	1
1.1.1	Introduction	1
1.1.2	Structure of this report	1
1.1.3	The Resource Management Act 1991 and monitoring	1
1.1.4	Evaluation of environmental performance	2
1.2	Process description	2
1.3	Resource consents	3
1.3.1	Associated wellsites	4
1.4	Monitoring programme	5
1.4.1	Introduction	5
1.4.2	Programme liaison and management	6
1.4.3	Site inspections	6
1.4.4	Chemical sampling	6
1.4.5	Biomonitoring surveys	6
2	Results	7
2.1	Water	7
2.1.1	Inspections	7
2.1.2	Results of discharge monitoring	7
2.1.3	Provision of consent holder data	8
2.1.4	Results of receiving environment monitoring	9
	2.1.4.1 Chemical	9
	2.1.4.2 Biomonitoring	9
2.2	Air	10
2.2.1	Inspections	10
2.2.2	Results of receiving environment monitoring	11
	2.2.2.1 Carbon monoxide and combustible gases	11
	2.2.2.2 PM ₁₀ particulates	12
	2.2.2.3 Nitrogen oxides	13
2.2.3	Summary of flaring volumes reported by Todd Petroleum	14
2.3	Incidents, investigations, and interventions	14
3	Discussion	16

3.1	Discussion of site performance	16
3.2	Environmental effects of exercise of consents	16
3.3	Evaluation of performance	16
3.4	Recommendations from the 2020-2021 Annual Report	20
3.5	Alterations to monitoring programmes for 2022-2023	20
3.6	Exercise of optional review of consent	21
4	Recommendations	22
	Glossary of common terms and abbreviations	23
	Bibliography and references	25
	Appendix I Resource consents held by Todd Petroleum Mining Company Ltd	
	Appendix II Categories used to evaluate environmental and administrative performance	

List of tables

Table 1	Resource consents relating to the Kapuni Production Station	3
Table 2	Resource consents for production activities at the Kapuni wellsites	4
Table 3	Results of discharge monitoring at Kapuni Production Station (STW002014)	8
Table 4	Kapuni Production Station stormwater discharge results summary for 2021-2022	8
Table 5	Receiving environment results for Kapuni Stream	9
Table 6	Results of carbon monoxide and LEL monitoring at Kapuni Production Station	11
Table 7	Daily averages of PM ₁₀ results from monitoring at Kapuni Production Station	12
Table 8	Summary of performance for consent 0633-3	16
Table 9	Summary of performance for consent 4054-6.1	17
Table 10	Summary of performance for consent 5960-1	18
Table 11	Summary of performance for Consent 9555-1	19
Table 12	Evaluation of environmental performance over time	19

List of figures

Figure 1	Kapuni Production Station and associated sampling sites	7
Figure 2	Biomonitoring sites in the Kapuni Stream	10
Figure 3	Air monitoring sites at Kapuni Production Station for 2021-2022	11
Figure 4	Ambient carbon monoxide levels in the vicinity of Kapuni Production Station	12
Figure 5	PM ₁₀ concentrations (µg/m ³) at Kapuni Production Station	13
Figure 6	Monthly gas flaring for Kapuni Production Station and Kapuni-J under consent 4054-6.1	14

List of photos

Photo 1 Kapuni Production Station

3

1 Introduction

1.1 Compliance monitoring programme reports and the Resource Management Act 1991

1.1.1 Introduction

This report is for the period July 2021 to June 2022 by the Taranaki Regional Council (the Council) on the monitoring programme associated with resource consents held by Todd Petroleum Mining Company Ltd (Todd Petroleum). Todd Petroleum operates the Kapuni Production Station situated on Palmer Road, Kapuni, together with its associated wellsites.

The report includes the results and findings of the monitoring programme implemented by the Council in respect of the consents held by Todd Petroleum that relate to discharges of water within the Kapuni catchment, structures in the Kapuni Stream, and emissions to air from the production station site.

One of the intents of the *Resource Management Act 1991* (RMA) is that environmental management should be integrated across all media, so that a consent holder's use of water, air, and land should be considered from a single comprehensive environmental perspective. Accordingly, the Council generally implements integrated environmental monitoring programmes and reports the results of the programmes jointly. This report discusses the environmental effects of Todd Petroleum's use of water, land and air, and is the 31st combined annual report by the Council for the Kapuni Production Station.

1.1.2 Structure of this report

Section 1 of this report is a background section. It sets out general information about:

- consent compliance monitoring under the RMA and the Council's obligations;
- the Council's approach to monitoring sites through annual programmes;
- the resource consents held by Todd Petroleum in the Kapuni catchment;
- the nature of the monitoring programme in place for the period under review; and
- a description of the activities and operations conducted at the Kapuni Production Station.

Section 2 presents the results of monitoring during the period under review, including scientific and technical data.

Section 3 discusses the results, their interpretations, and their significance for the environment.

Section 4 presents recommendations to be implemented in the 2022-2023 monitoring year.

A glossary of common abbreviations and scientific terms, and a bibliography, are presented at the end of the report.

1.1.3 The Resource Management Act 1991 and monitoring

The RMA primarily addresses environmental 'effects' which are defined as positive or adverse, temporary or permanent, past, present or future, or cumulative. Effects may arise in relation to:

- a. the neighbourhood or the wider community around an activity, and may include cultural and social-economic effects;
- b. physical effects on the locality, including landscape, amenity and visual effects;
- c. ecosystems, including effects on plants, animals, or habitats, whether aquatic or terrestrial;

- d. natural and physical resources having special significance (for example recreational, cultural, or aesthetic); and
- e. risks to the neighbourhood or environment.

In drafting and reviewing conditions on discharge permits, and in implementing monitoring programmes, the Council is recognising the comprehensive meaning of 'effects' in as much as is appropriate for each activity. Monitoring programmes are not only based on existing permit conditions, but also on the obligations of the RMA to assess the effects of the exercise of consents. In accordance with Section 35 of the RMA, the Council undertakes compliance monitoring for consents and rules in regional plans, and maintains an overview of the performance of resource users and consent holders. Compliance monitoring, including both activity and impact monitoring, enables the Council to continually re-evaluate its approach and that of consent holders to resource management and, ultimately, through the refinement of methods and considered responsible resource utilisation, to move closer to achieving sustainable development of the region's resources.

1.1.4 Evaluation of environmental performance

Besides discussing the various details of the performance and extent of compliance by the consent holders, this report also assigns a rating as to each Company's environmental and administrative performance during the period under review. The rating categories are high, good, improvement required and poor for both environmental and administrative performance. The interpretations for these ratings are found in Appendix II.

For reference, in the 2021-2022 year, consent holders were found to achieve a high level of environmental performance and compliance for 88% of the consents monitored through the Taranaki tailored monitoring programmes, while for another 10% of the consents, a good level of environmental performance and compliance was achieved.¹

1.2 Process description

The Kapuni Production Station is located approximately in the middle of the Kapuni gas field, and adjacent to the Kapuni Gas Treatment Plant (KGTP). Exploration of the Kapuni Field began in 1959, and production began at Kapuni in 1969.

The function of the Kapuni Production Station is to gather the gas and condensate from the wellsites. The gas is delivered to KGTP for processing. The condensate gathered at the production station is treated and stabilised for storage and export to the Paritutu Tank Farm.

Three flares operate continuous pilots, which burn as yellow flames and are visible at night. The Kapuni Stream separates two of the flares from the remainder of the Kapuni Production Station site. The flares are linked to the main site by high and low pressure piping systems carried on a single span girder bridge with vehicular access via a ford through the Kapuni Stream. The flares are surrounded by farmland and the nearest dwelling is more than 300 m from the flare stacks. The other flare is located in the north eastern corner of the site.

¹ The Council has used these compliance grading criteria for more than 18 years. They align closely with the 4 compliance grades in the MfE Best Practice Guidelines for Compliance, Monitoring and Enforcement, 2018



Photo 1 Kapuni Production Station

1.3 Resource consents

Todd Petroleum holds four resource consents the details of which are summarised in the table below. Summaries of the conditions attached to each permit are set out in Section 3 of this report.

A summary of the various consent types issued by the Council is included in Appendix I, as are copies of all permits held by Todd Petroleum during the period under review.

Table 1 Resource consents relating to the Kapuni Production Station

Consent number	Purpose	Granted	Review	Expires
<i>Water discharge permit</i>				
0633-3	To discharge treated stormwater from the Kapuni Production Station into the Kapuni Stream.	August 2011	June 2023	June 2029
<i>Air discharge permit</i>				
4054-6.1	To discharge emissions into the air from combustion involving flaring of petroleum products and miscellaneous emissions incidental to the treatment of gas at the Kapuni Production Station	November 2017	June 2023	June 2035
<i>Land use permits</i>				
5960-1	To erect, place, use and maintain a concrete ford on the bed of the Kapuni Stream for access purposes.	February 2002	-	June 2023
9555-1	To disturb the bed of the Kapuni Stream for the purpose of undertaking maintenance work on the fire water intake chamber	April 2013	June 2023	June 2029

1.3.1 Associated wellsites

Todd Petroleum also holds consents for production activities at wellsites associated with the Kapuni Production Station and these are summarised in Table 2.

Table 2 Resource consents for production activities at the Kapuni wellsites

Wellsite	Consent	Purpose	Issue Date	Expiry
KA-1/7/19/20	6200-2	To discharge treated stormwater from hydrocarbon exploration and production operations at the KA-1/7/19/20 wellsite onto and into land	17/11/2017	2035
	6646-1	To take and use groundwater from a bore as a contingency backup supply for fire fighting, well killing, workover and domestic purposes at the KA-1/7 wellsite	18/07/2005	2023
	6822-1	To discharge emissions into the air from well workovers and in emergency situations and miscellaneous emissions associated with production activities at the KA-1/7 wellsite	21/03/2006	2023
KA-2	0611-3	To take and use groundwater from a bore as a contingency backup supply for fire fighting, well killing, workover and domestic purposes at the KA-2 wellsite	18/07/2005	2023
	3267-3	To discharge stormwater from the KA-2 wellsite into the Kapuni Stream	02/08/2011	2029
	6823-1	To discharge emissions into the air from well workovers and in emergency situations and miscellaneous emissions associated with production activities at the KA-2 wellsite	21/03/2006	2023
KA-3	0610-3	To take and use groundwater from a bore as a contingency backup supply for fire fighting, well killing, workover and domestic purposes at the KA-3 wellsite	18/07/2005	2023
	3268-3	To discharge stormwater from the KA-3 wellsite into an unnamed tributary of the Inaha Stream	02/08/2011	2029
	6824-1	To discharge emissions into the air from well workovers and in emergency situations and miscellaneous emissions associated with production activities at the KA-3 wellsite	21/03/2006	2023
KA-4/14	2365-3	To discharge stormwater from the KA-4/14 wellsite into an unnamed tributary of the Waiokura Stream	02/08/2011	2029
	6645-1	To take and use groundwater from a bore as a contingency backup supply for fire fighting, well killing, workover and domestic purposes at the KA-4/14 wellsite	18/07/2005	2023
	6825-1	To discharge emissions into the air from well workovers and in emergency situations and miscellaneous emissions associated with production activities at the KA-4/14 wellsite	21/03/2006	2023
KA-5/10	6199-2	To discharge treated stormwater from hydrocarbon exploration and production operations at the KA-5/10 wellsite onto and into land	17/11/2017	2035
	6826-1	To discharge emissions into the air from well workovers and in emergency situations and miscellaneous emissions associated with production activities at the KA-5/10 wellsite	21/03/2006	2023

Wellsite	Consent	Purpose	Issue Date	Expiry
KA-6/11/17	3266-3	To discharge stormwater from the KA-6/11/17 wellsite into an unnamed tributary of the Inaha Stream	02/08/2011	2029
KA-6/11/17	6827-1	To discharge emissions into the air from well workovers and in emergency situations and miscellaneous emissions associated with production activities at the KA-6/11 wellsite	21/03/2006	2023
	7114-1	To discharge liquids onto and into land from a purpose built, blow down pit at the KA-6/11 wellsite	19/06/2007	2023
KA-8/12/15/18	3265-3	To discharge stormwater from the KA-8/12/15/18 wellsite into an unnamed tributary of the Inaha Stream	02/08/2011	2029
	6828-1	To discharge emissions into the air from well workovers and in emergency situations and miscellaneous emissions associated with production activities at the KA-8/12/15 wellsite	21/03/2006	2023
	7113-1	To discharge liquids onto and into land from a purpose built, blow down pit at the KA-8/12/15 wellsite	19/06/2007	2023
KA-9	5871-2	To discharge treated stormwater from hydrocarbon exploration and production operations at the KA-9/16 wellsite onto and into land	17/11/2017	2035
	5874-2	To use a pipeline bridge over the Kapuni Stream	16/11/2017	2035
KA-13	1105-3	To discharge stormwater from the KA-13 wellsite into the Kapuni Stream	02/08/2011	2029
	6829-1	To discharge emissions into the air from well workovers and in emergency situations and miscellaneous emissions associated with production activities at the KA-13 wellsite	21/03/2006	2023
	7005-1	To discharge liquids onto and into land from a purpose built, blow down pit at the KA-13 wellsite	24/11/2006	2023
Various	6647-1	To take and use water from the Kapuni Stream for fire fighting, well killing and well workover purposes for emergency backup supply at various wellsites	27/09/2005	2023

1.4 Monitoring programme

1.4.1 Introduction

Section 35 of the RMA sets obligations upon the Council to gather information, monitor and conduct research on the exercise of resource consents within the Taranaki region. The Council is also required to assess the effects arising from the exercising of these consents and report upon them.

The Council may therefore make and record measurements of physical and chemical parameters, take samples for analysis, carry out surveys and inspections, conduct investigations and seek information from consent holders.

The monitoring programme for the Kapuni Production Station consisted of four primary components.

1.4.2 Programme liaison and management

There is generally a significant investment of time and resources by the Council in:

- ongoing liaison with resource consent holders over consent conditions and their interpretation and application;
- discussion over monitoring requirements;
- preparation for any consent reviews, renewals or new consent applications;
- advice on the Council's environmental management strategies and content of regional plans; and
- consultation on associated matters.

1.4.3 Site inspections

The Kapuni Production Station was visited four times during the monitoring period. With regard to consents for the discharge to water, the main points of interest were plant processes with potential or actual discharges to receiving watercourses, including contaminated stormwater and process wastewaters. Air inspections focused on plant processes with associated actual and potential emission sources and characteristics, including potential odour, dust, noxious or offensive emissions. Sources of data being collected by the Company were identified and accessed, so that performance in respect of operation, internal monitoring, and supervision could be reviewed by the Council. The neighbourhood was surveyed for environmental effects.

1.4.4 Chemical sampling

The Council undertook sampling of both the discharges from the site and the water quality upstream and downstream of the discharge point and mixing zone.

The Kapuni Production Station discharge was sampled twice, and the samples analysed for chlorides, conductivity, hydrocarbons, pH, suspended solids and turbidity. The Kapuni Stream was sampled concurrently, and the samples analysed for the same constituents.

The Council undertook sampling of the ambient air quality outside the boundary of the site. A multi-gas meter was deployed on one occasion in the vicinity of the plant, with monitoring consisting of continuous measurements of gas concentrations for the gases of interest (carbon monoxide and combustible gases). A PM₁₀ particulate monitor was deployed concurrently with the multi-gas meter. Two nitrogen oxide measuring devices were also deployed in the vicinity of the plant on one occasion during the year under review.

1.4.5 Biomonitoring surveys

A biological survey was performed on one occasion in the Kapuni Stream to determine whether or not the discharge of stormwater from the Kapuni Production Station has had a detrimental effect upon the communities of the stream.

2 Results

2.1 Water

2.1.1 Inspections

Four inspections were carried out at the Kapuni Production Station in the 2021-2022 period, along with an annual inspection of associated wellsites. Inspections were undertaken on 16 September and 3 December 2021, and 4 April and 13 June 2022. In general the site was found to be neat and tidy with no significant issues noted. No adverse effects were observed in the receiving waters below the point of discharge. Pilot flares were clean burning with no smoke or odours noted.

2.1.2 Results of discharge monitoring

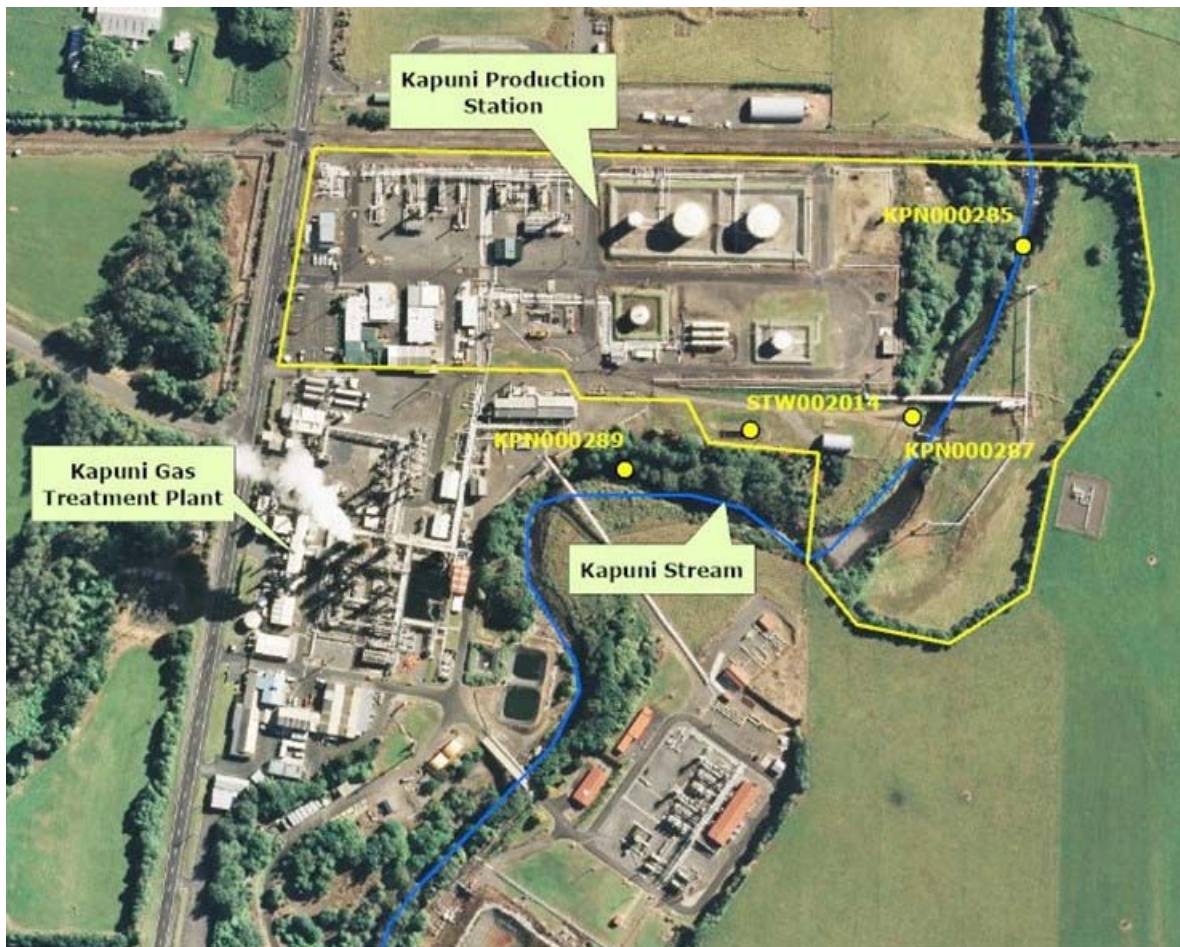


Figure 1 Kapuni Production Station and associated sampling sites

Stormwater at the Kapuni Production Station is treated using two oil-water separators. Stormwater captured beneath equipment and in bunded areas around storage facilities is directed to the first separator for initial treatment. It is then treated in a second separator prior to discharge to the Kapuni Stream. Stormwater from other areas, such as roads, is directed to the second separator.

Chemical water quality sampling of the treated stormwater discharge from the production station was undertaken twice during the 2021-2022 period. Table 3 presents the results of this sampling. The location of the sampling site at the outlet of the second API separator (STW002014) is shown in Figure 1.

Table 3 Results of discharge monitoring at Kapuni Production Station (STW002014)

Parameter	Units	Date		Consent limits
		18 May 2022	31 May 2022	
Chloride	g/m ³	1.8	8.0	50
Conductivity	g/m ³	3.3	6.0	-
Hydrocarbons	g/m ³	< 0.7	< 0.7	15
Suspended solids	g/m ³	<3	<3	100
pH		6.5	6.4	6.0 – 9.0
Turbidity	FNU	3.7	2.7	-

The results show compliance with the conditions of consent 0633-3 at the time of sampling and are indicative of a very clean discharge.

2.1.3 Provision of consent holder data

Todd Petroleum provided the Council with the results for daily composite samples of the Kapuni Production Station stormwater discharge, sampled at the outfall from the final separator. The results are summarised in Table 4.

Table 4 Kapuni Production Station stormwater discharge results summary for 2021-2022

Month	Hydrocarbons (g/m ³)		Suspended solids (g/m ³)		pH		Chloride	
	Max	Average	Max	Average	Range	Average	Max	Average
Consent limits	15		100		6.0 – 9.0		50	
July 2021	9	<5	40	6	5.5 – 7.1	6.5	22	12
August 2021	8	<5	25	5	6.2 – 6.9	6.6	61	23
September 2021	<5	<5	7	4	6.5 – 7.4	6.8	74	21
October 2021	8	<5	21	9	6.6 – 7.4	7.0	40	21
November 2021	8	<5	13	10	6.5 – 7.0	6.8	17	14
December 2021	7	<5	60	8	6.5 – 7.6	7.0	51	14
January 2022	7	<5	13	6	6.5 – 7.2	6.9	17	12
February 2022	<5	<5	11	6	6.5 – 7.2	6.9	31	16
March 2022	5	<5	12	8	6.3 – 7.2	6.9	17	12
April 2022	7	<5	34	12	6.3 – 7.0	6.8	22	14
May 2022	8	<5	67	8	6.1 – 7.1	6.8	35	16
June 2022	6	<5	6	3	6.0 – 7.2	6.7	16	43

The results show a consistently clean discharge. Maximum values for hydrocarbons, and suspended solids were below the consent limits throughout the period under review. The pH was within the acceptable range in the majority of samples, with the exception of three consecutive days in July 2021 where pH was below 6.

Chloride was generally well below the consented limit of 50 g/m³, with the exception of three consecutive daily samples in August, one day in September and two consecutive days in December 2021 exceeding this.

2.1.4 Results of receiving environment monitoring

2.1.4.1 Chemical

Table 5 Receiving environment results for Kapuni Stream

Parameter	Units	18 May 2022		31 May 2022		Consent 0633-3 conditions
		Upstream KPN000287	Downstream KPN000289	Upstream KPN000287	Downstream KPN000289	
Chloride	g/m ³	8	8	9	9	-
Conductivity	g/m ³	8.3	8.2	8.9	9.0	-
Hydrocarbons	g/m ³	< 0.7	< 0.7	< 0.7	< 0.7	No conspicuous oil films or foams
Suspended solids	g/m ³	5	8	7	5	No conspicuous change
pH		7.5	7.2	7.5	7.5	-
Turbidity	FNU	1.5	2.3	3.2	3.9	No conspicuous change

Chemical water quality sampling of the Kapuni Stream was undertaken in conjunction with discharge monitoring at points upstream (KPN000287) and downstream (KPN000289) of the discharge point. The results are shown in Table 5 and the sampling sites are shown in Figure 1.

There was negligible difference in receiving water quality upstream and downstream of the production station discharge. This indicates that the discharge was in compliance with consent conditions regarding receiving environment quality at the time of sampling.

2.1.4.2 Biomonitoring

The Council's standard 'kick-sampling' technique was used at two sites (Figure 2) on 3 February 2022 to collect streambed macroinvertebrates from the Kapuni Stream to assess whether stormwater discharges from the Kapuni Production Station had had any adverse effects on the macroinvertebrate communities of this stream. Samples were processed to provide number of taxa (richness), Macroinvertebrate Community Index (MCI) and Semi-quantitative Macroinvertebrate Community Index (SQMCI) scores for each site.

The MCI is a measure of the overall sensitivity of the macroinvertebrate community to the effects of nutrient pollution in streams. It is based on the presence/absence of taxa with varying degrees of sensitivity to pollution. The SQMCI accounts for taxa abundance as well as sensitivity to pollution, and may reveal more subtle changes in communities. Significant differences in either the MCI or the SQMCI between sites indicate the degree of adverse effects (if any) of the discharges being monitored and enable the overall health of the macroinvertebrate communities to be determined.

Taxa richness was moderate at both sites. Both sites had taxa richness lower than the preceding survey results, by up to three taxa. When compared to the sites' historic medians, taxa richness was similar to expected. MCI scores of 116 and 125 were recorded at sites 2 and 2b, categorising the two sites as having 'good' and 'very good' macroinvertebrate community health respectively. Both scores were similar to the sites' historical medians and preceding results. SQMCI scores were 7.0 and 7.2 at the two sites, categorising both sites as having 'excellent' macroinvertebrate community health. These scores were not significantly different between sites, or from the sites' respective historic medians or preceding results.

Overall, the macroinvertebrate community composition was similar between the two sites. This similarity is reflected by all three macroinvertebrate metrics, which did not change significantly between the two sites. These results indicate that stormwater discharges from the Kapuni Production Station had not caused any recent significant adverse effects on the macroinvertebrate communities of the Kapuni Stream.

A copy of the biomonitoring report for this site is available from the Council upon request.

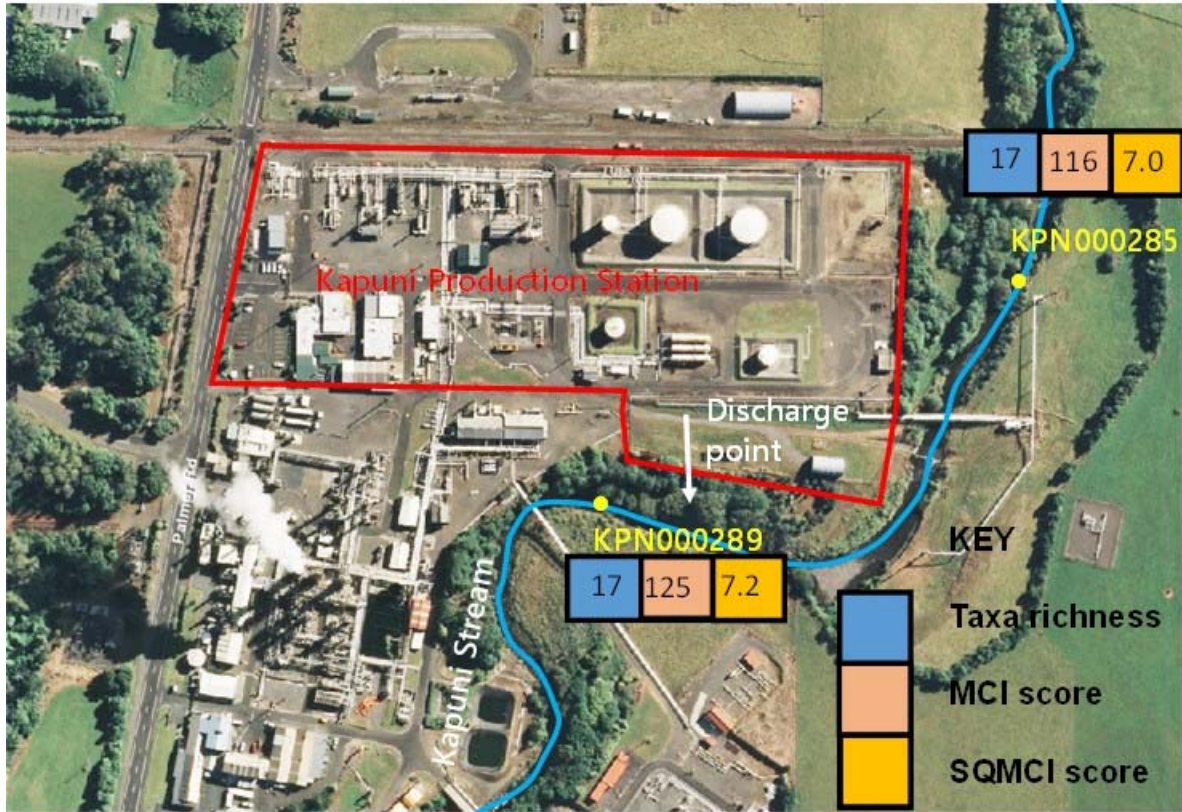


Figure 2 Biomonitoring sites in the Kapuni Stream

2.2 Air

2.2.1 Inspections

Air inspections were carried out in conjunction with site inspections as discussed in section 2.1.1 above. Air discharges were all found to be satisfactory, and no offensive, obnoxious or objectionable odours or plumes of smoke were noted during the inspections.

2.2.2 Results of receiving environment monitoring

2.2.2.1 Carbon monoxide and combustible gases



Figure 3 Air monitoring sites at Kapuni Production Station for 2021-2022

During the monitoring year, a multi-gas meter was deployed on one occasion in the vicinity of the plant. The deployment lasted approximately 43 hours, with the instrument placed in a down-wind position at the start of the deployment. Monitoring consisted of continuous measurements of gas concentrations for the gases of interest (carbon monoxide and combustible gases).

Because of the nature of the activities on the site, it was considered that the primary information of interest in respect of gases potentially emitted from the site was the average downwind concentration, rather than any instantaneous peak value. That is, the long-term exposure levels, rather than short-term maxima, are of most interest. The gas meter was therefore set up to create a data set based on recording the average concentration measured during each minute as raw data. The details of the sample run are summarised in Table 6 and the data from the sample run are presented graphically in Figure 4.

Table 6 Results of carbon monoxide and LEL monitoring at Kapuni Production Station

Period (from-to)		24 to 26 Nov 2021 (43 hours)
Max	CO(ppm)	1.30 ⁽¹⁾
	LEL(%)	0.10
Mean	CO(ppm)	0.05 ⁽¹⁾
	LEL(%)	0.00
Min	CO(ppm)	0.00
	LEL(%)	0.00

Notes: (1) the instrument records in units of ppm. At 25°C and 1 atm, 1 ppm CO = 1.145 mg/m³

(2) because the LEL of methane is equivalent to a mixture of approximately 5% methane in air, then the actual concentration of methane in air can be obtained by dividing the percentage LEL by 20.

The consent covering air discharges from the Kapuni Production Station has specific limits related to particular gases. Special condition 11 of consent 4054-6.1 set limits on the carbon monoxide, nitrogen dioxide and fine particles (PM₁₀) concentrations at or beyond the production station's boundary. The

Ministry for the Environment’s air quality guidelines for carbon monoxide (which are based on health protection) are 30 mg/m³ averaged over a one hour exposure and 10 mg/m³ averaged over an eight hour exposure period. The maximum concentration of carbon monoxide found during the monitoring run was 1.5 mg/m³ while the average concentration for the entire dataset was 0.06 mg/m³ which comply with the Ministry for the Environment’s air quality guidelines. This is consistent with the pattern found in previous years.

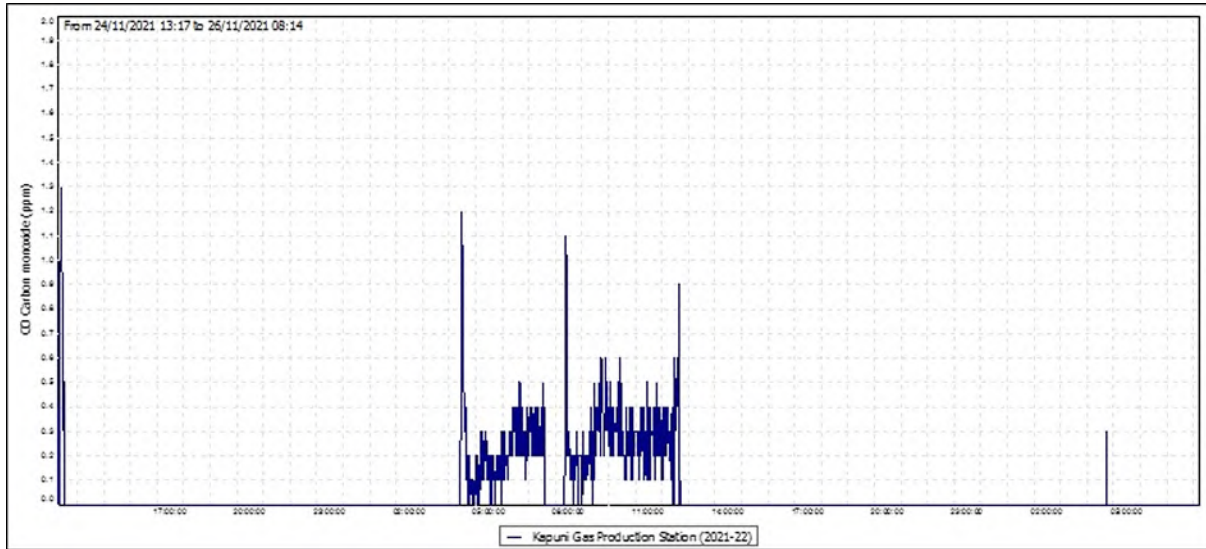


Figure 4 Ambient carbon monoxide levels in the vicinity of Kapuni Production Station

2.2.2.2 PM₁₀ particulates

In September 2004 the Ministry for the Environment enacted National Environmental Standards for Air Quality (NES) relating to certain air pollutants. The NES for PM₁₀ particulates is 50 µg/m³ (24-hour average).

Particulates can be derived from many sources, including motor vehicles (particularly diesel), solid and oil-burning processes for industry and power generation, incineration and waste burning, photochemical processes, and natural sources such as pollen, abrasion, and sea spray.

PM₁₀ particles are linked to adverse health effects that arise primarily from the ability of particles of this size to penetrate the defences of the human body and enter deep into the lungs, significantly reducing the exchange of gases across the lung walls. Health effects from inhaling PM₁₀ include increased mortality and the aggravation of existing respiratory and cardiovascular conditions such as asthma and chronic pulmonary diseases.

During the reporting period, a DustTrak PM₁₀ monitor was deployed on one occasion in the vicinity of Kapuni Production Station. The deployment lasted approximately 43 hours, with the instrument placed in a down-wind position at the start of the deployment. Monitoring consisted of continual measurements of PM₁₀ concentrations. The location of the DustTrak monitor during the sampling run is shown in Figure 3. The results of the sample run are presented in Table 7 and Figure 5.

Table 7 Daily averages of PM₁₀ results from monitoring at Kapuni Production Station

	24 to 26 Nov 2021 (43 hours)	
24 hr. set	Day 1 (start to 24 hours)	Day 2 (24 hours to end)
Daily average	6.4 µg/m ³	15.2 µg/m ³
NES	50 µg/m ³	

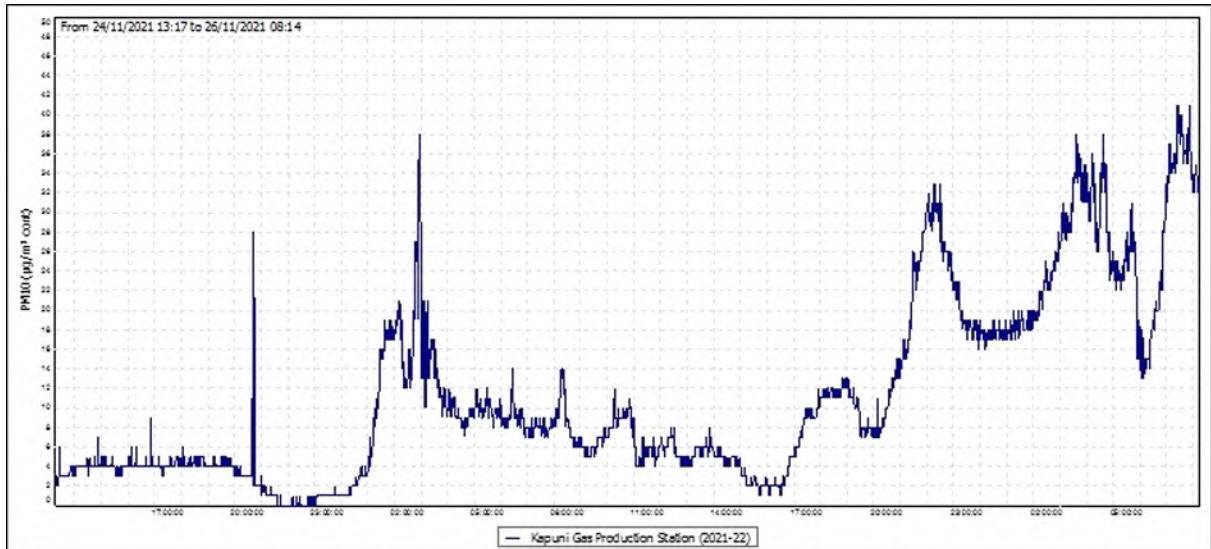


Figure 5 PM₁₀ concentrations (µg/m³) at Kapuni Production Station

During the 43 hour run, from 24 to 26 November 2021, the average recorded PM₁₀ concentration for the first 24 hour period was 6.4 µg/m³ and 15.2 µg/m³ for the second 24 hour period. These daily averages equate to 13% and 30%, respectively, of the 50 µg/m³ value that is set by the NES. Background levels of PM₁₀ in the region are typically around 11 µg/m³.

2.2.2.3 Nitrogen oxides

From 2014 onwards, the Council implemented a coordinated region-wide compliance monitoring programme to measure nitrogen oxides (NO_x). The programme involves deploying measuring devices at 28 NO_x monitoring sites (including two sites in the vicinity of Kapuni Production Station) on the same day, with retrieval three weeks later. This approach assists the Council in further evaluating the effects of local and regional emission sources and ambient air quality in the region.

The consent 4054-6.1 covering air discharges from the Kapuni Production Station has requirements to meet specific limits related to particular gases. Special condition 11 of consent 4054-6.1 requires the nitrogen dioxide concentration at or beyond the production station's boundary to comply with the NES for Air Quality Regulations limit of 200 µg/m³ for a one hour average exposure.

NO_x passive adsorption discs were placed at two locations in the vicinity of the Kapuni Production Station on one occasion during the year under review. The discs were left in place for a period of 21 days.

The calculated 1-hour theoretical maximum NO_x concentrations found at the Kapuni Production Station during the year under review equates to 19.6 µg/m³. The results show that the ambient ground level concentration of NO_x is well below the limits set out by the NES.

Copies of air monitoring reports for this site are available from the Council upon request.

2.2.3 Summary of flaring volumes reported by Todd Petroleum

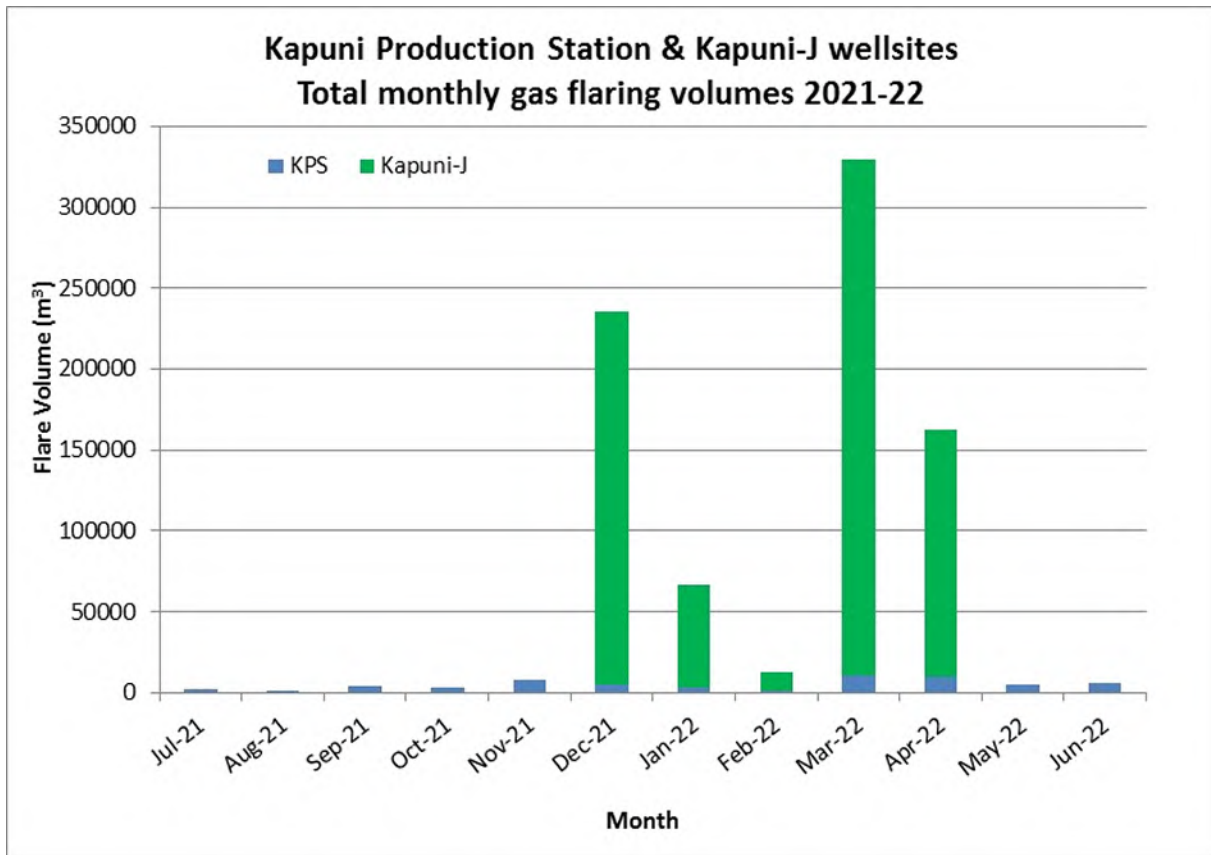


Figure 6 Monthly gas flaring for Kapuni Production Station and Kapuni-J under consent 4054-6.1

Todd Petroleum provided the Council with an annual report on flaring and emissions during the 2021-2022 period, as required by consent 4054-6.1. During the 2021-2022 period the Kapuni-J wellsites were bought online, with well testing undertaken between December 2021 and April 2022 resulting in additional flaring through the Kapuni Production Station. A summary of total flaring volumes at Kapuni Production Station (production station operations plus Kapuni-J wellsites) is provided in Figure 6. The volume of gas flared from activities at the production station in the 2021-2022 year was 58,180 m³, which was similar to the amount of gas flared in the previous year (57,100 m³). An additional 775,900 m³ was flared through the Kapuni Production Station as a result of wellsite testing.

The majority of flaring events from Kapuni Production Station activities (excluding the pilot flare) related to re-starting low pressure wells, pumping condensate to the tank farm, compressor trips, plant trips, or planned maintenance. Flaring from the Kapuni-J wellsites was due to wellsite testing. No complaints were received from the public regarding flaring at the production station.

2.3 Incidents, investigations, and interventions

The monitoring programme for the year was based on what was considered to be an appropriate level of monitoring, review of data, and liaison with Todd Petroleum. During the year matters may arise which require additional activity by the Council, for example provision of advice and information, or investigation of potential or actual causes of non-compliance or failure to maintain good practices. A pro-active approach, that in the first instance avoids issues occurring, is favoured.

For all significant compliance issues, as well as complaints from the public, the Council maintains a database record. The record includes events where the individual/organisation concerned has itself notified the Council. Details of any investigation and corrective action taken are recorded for non-compliant events.

Complaints may be alleged to be associated with a particular site. If there is potentially an issue of legal liability, the Council must be able to prove by investigation that the identified individual/organisation is indeed the source of the incident (or that the allegation cannot be proven).

In the 2021-2022 period, the Council was not required to undertake significant additional investigations and interventions, or record incidents, in association with the Company's conditions in resource consents or provisions in Regional Plans.

3 Discussion

3.1 Discussion of site performance

Inspections of the Kapuni Production Station during the 2021-2022 year found that the site was well managed. All consent conditions relating to site operations and management were complied with.

3.2 Environmental effects of exercise of consents

Receiving water inspections, in conjunction with sampling conducted by both the Council and Todd Petroleum during the 2021-2022 period, showed that the site discharges were not causing any adverse effects in the Kapuni Stream. This was supported by the findings of the macroinvertebrate survey.

There were no adverse effects on the environment resulting from the exercise of the air discharge consent. The ambient air quality monitoring at the site showed that levels of carbon monoxide, combustible gases, PM₁₀ particulates and nitrogen oxides were all below levels of concern at the time of sampling. No offensive or objectionable odours were detected beyond the boundary during inspections and there were no complaints in relation to air emissions from the site.

3.3 Evaluation of performance

A tabular summary of the consent holder's compliance record for the year under review is set out in Tables 8-11.

Table 8 Summary of performance for consent 0633-3

Purpose: To discharge treated stormwater from the Kapuni Production Station into the Kapuni Stream		
Condition requirement	Means of monitoring during period under review	Compliance achieved?
1. Adoption of best practicable option to minimise adverse effects	Site inspections and liaison with consent holder	Yes
2. Catchment area not to exceed 4 ha	Site inspections	Yes
3. Stormwater to be directed through a treatment system	Site inspections	Yes
4. Limit on the concentration of pH, suspended solids, hydrocarbons and chloride	Water sampling and self-monitoring by consent holder	Mostly, no significant breaches
5. In-stream effects	Inspections, sampling, and biomonitoring	Yes
6. Contingency plan	Plan reviewed and approved	Yes
7. Consent holder to notify Council of significant changes to processes or operations	Site inspections and liaison with consent holder	Yes

Purpose: To discharge treated stormwater from the Kapuni Production Station into the Kapuni Stream		
Condition requirement	Means of monitoring during period under review	Compliance achieved?
8. Review of consent	Next option for review in June 2023, recommendation attached in section 3.6	N/A
Overall assessment of consent compliance and environmental performance in respect of this consent		High
Overall assessment of administrative performance in respect of this consent		High

N/A = not applicable

Table 9 Summary of performance for consent 4054-6.1

Purpose: To discharge emissions into the air from combustion involving flaring of petroleum products and miscellaneous emissions incidental to the treatment of gas at the Kapuni Production Station		
Condition requirement	Means of monitoring during period under review	Compliance achieved?
1. Adoption of best practicable option to minimise adverse effects	Site inspections and liaison with consent holder	Yes
2. Maintenance of log of continuous flaring incidents	Information received	Yes
3. Provision of monthly flaring information	Information received	Yes
4. Provision of annual report on flaring to council	Report received	Yes
5. Record of smoke emitting events and complaints	Site inspections, records kept by consent holder, and liaison with consent holder	Yes
6. Provide analysis of typical gas stream on request	Not requested during period under review	N/A
7. Consultation with Council prior to significant alterations to plant, processes, or operations	Site inspections and liaison with consent holder	Yes
8. Notification of flaring more than five minutes in duration	Flaring notifications received	Yes
9. No offensive, obnoxious or objectionable odours, dust or smoke beyond site boundary	Site inspections	Yes
10. No discharge of hazardous, noxious or toxic contaminants beyond site boundary	Site inspections and air quality monitoring	Yes
11. Control levels of CO, NO ₂ , PM ₁₀ and SO ₂ to comply with NES	Air quality monitoring	Yes
12. Control discharges to the atmosphere to comply with WES	Air quality monitoring	Yes
13. Lapse of consent	Consent exercised	N/A

Purpose: To discharge emissions into the air from combustion involving flaring of petroleum products and miscellaneous emissions incidental to the treatment of gas at the Kapuni Production Station		
Condition requirement	Means of monitoring during period under review	Compliance achieved?
14. Review of consent	Next option for review in June 2023, recommendation attached in section 3.6	N/A
Overall assessment of consent compliance and environmental performance in respect of this consent		High
Overall assessment of administrative performance in respect of this consent		High

N/A = not applicable

Table 10 Summary of performance for consent 5960-1

Purpose: To erect, place, use and maintain a concrete ford on the bed of the Kapuni Stream for access purposes		
Condition requirement	Means of monitoring during period under review	Compliance achieved?
1. Construction and maintenance only between 1 November and 30 April	Inspections. No maintenance undertaken during this monitoring period	N/A
2. Notify Council before undertaking construction and maintenance works	Inspections. No maintenance undertaken during this monitoring period	N/A
3. Constructed and maintained in accordance with application	Inspections. No maintenance undertaken during this monitoring period	N/A
4. During maintenance works observe measures to prevent discharge and minimise disturbance	Inspections. No maintenance undertaken during this monitoring period	N/A
5. Minimise disturbance and reinstate any disturbed areas	Inspections. No maintenance undertaken during this monitoring period	N/A
6. The structure shall not obstruct fish passage	Site inspection	Yes
7. Structures to be removed and area reinstated when no longer required	Structures still in use	N/A
8. Review of consent	No further provision for review prior to expiry	N/A
Overall assessment of consent compliance and environmental performance in respect of this consent		High
Overall assessment of administrative performance in respect of this consent		High

N/A = not applicable

Table 11 Summary of performance for Consent 9555-1

Purpose: To disturb the bed of the Kapuni Stream for the purpose of undertaking maintenance work on the fire water intake chamber		
Condition requirement	Means of monitoring during period under review	Compliance achieved?
1. Notify Council before undertaking maintenance works	No works undertaken during monitoring period	Yes
2. Adopt best practicable option to avoid or minimise effects	No works undertaken during monitoring period	Yes
3. Restrict area and volume of disturbance to a practicable minimum	No works undertaken during monitoring period	Yes
4. No instream works between 1 May and 31 October	No works undertaken during monitoring period	Yes
5. Exercise of consent shall not obstruct fish passage	No works undertaken during monitoring period	Yes
6. Lapse of consent	Consent has been exercised	N/A
7. Review of consent	Next option for review in June 2023, recommendation attached in section 3.6	N/A
Overall assessment of consent compliance and environmental performance in respect of this consent		High High
Overall assessment of administrative performance in respect of this consent		

N/A = not applicable

Table 12 Evaluation of environmental performance over time

Year	Consent no	High	Good	Improvement req	Poor
2009-10	0633-2, 4054-5, 5120-1, 5960-1	4	-	-	-
2010-11	0633-2, 4054-5, 5120-1, 5960-1	4	-	-	-
2011-12	0633-2, 4054-5, 5960-1	3	-	-	-
2012-14	0633-2, 4054-5, 5960-1,	3	-	-	-
2014-15	0633-3, 4054-5, 5960-1, 9555-1	4	-	-	-
2015-16	0633-3, 4054-5, 5960-1, 9555-1	4	-	-	-
2016-17	0633-3, 4054-5, 5960-1, 9555-1	4	-	-	-
2017-18	0633-3, 4054-5, 5960-1, 9555-1	4	-	-	-

Year	Consent no	High	Good	Improvement req	Poor
2018-19	0633-3, 4054-5, 5960-1, 9555-1	4	-	-	-
2019-20	0633-3, 4054-5, 5960-1, 9555-1	4	-	-	-
2020-21	0633-3, 4054-5, 5960-1, 9555-1	4	-	-	-
Totals		42	0	0	0

During the year, Todd Petroleum demonstrated an overall high level of both environmental performance and administrative compliance with the resource consents as defined in Appendix II. There were no unauthorised incidents recorded by the Council in relation to Todd Petroleum's activities. The Kapuni Production Station was well managed and maintained.

3.4 Recommendations from the 2020-2021 Annual Report

In the 2020-2021 Annual Report, it was recommended:

1. THAT in the first instance, monitoring of consented activities at Kapuni Production Station in the 2021-2022 year continue at the same level as in 2020-2021.
2. THAT should there be issues with environmental or administrative performance in 2021-2022, monitoring may be adjusted to reflect any additional investigation or intervention as found necessary.

Recommendation one was carried out, while it was not considered necessary to undertake additional investigation or monitoring as per condition two.

3.5 Alterations to monitoring programmes for 2022-2023

In designing and implementing the monitoring programmes for air/water discharges in the region, the Council has taken into account:

- the extent of information already made available through monitoring or other means to date;
- its relevance under the RMA;
- the Council's obligations to monitor consented activities and their effects under the RMA;
- the record of administrative and environmental performances of the consent holder; and
- reporting to the regional community.

The Council also takes into account the scope of assessments required at the time of renewal of permits, and the need to maintain a sound understanding of industrial processes within Taranaki exercising resource consents.

No changes have been made to the 2022-2023 monitoring programme.

It should be noted that the proposed programme represents a reasonable and risk-based level of monitoring for the site in question. The Council reserves the right to subsequently adjust the programme from that initially prepared, should the need arise if potential or actual non-compliance is determined at any time during 2022-2023.

3.6 Exercise of optional review of consent

Resource consents 0633-3, 4054-6, and 9555-1 provide for an optional review of the consents in June 2023. Conditions of the consents allow the Council to review the consent, for the purpose of ensuring that the conditions are adequate to deal with any adverse effects on the environment.

Based on the results of monitoring in the year under review, and in previous years as set out in earlier annual compliance monitoring reports, it is considered that there are no grounds that require a review to be pursued.

4 Recommendations

1. That in the first instance, monitoring of consented activities at Kapuni Production Station in the 2022-2023 year continue at the same level as in 2021-2022.
2. That should there be issues with environmental or administrative performance in 2022-2023, monitoring may be adjusted to reflect any additional investigation or intervention as found necessary.
3. That the option for a review of resource consents 0633-3, 4054-6, and 9555-1 in June 2023, as set out in conditions of the consents, not be exercised, on the grounds that the current conditions are adequate.

Glossary of common terms and abbreviations

The following abbreviations and terms may be used within this report:

Biomonitoring	Assessing the health of the environment using aquatic organisms.
Bund	A wall around a tank to contain its contents in the case of a leak.
Conductivity	Conductivity, an indication of the level of dissolved salts in a sample, usually measured at 25°C and expressed in mS/m.
g/m ³	Grams per cubic metre, and equivalent to milligrams per litre (mg/L). In water, this is also equivalent to parts per million (ppm), but the same does not apply to gaseous mixtures.
Incident	An event that is alleged or is found to have occurred that may have actual or potential environmental consequences or may involve non-compliance with a consent or rule in a regional plan. Registration of an incident by the Council does not automatically mean such an outcome had actually occurred.
Intervention	Action/s taken by Council to instruct or direct actions be taken to avoid or reduce the likelihood of an incident occurring.
Investigation	Action taken by Council to establish what were the circumstances/events surrounding an incident including any allegations of an incident.
Incident Register	The Incident Register contains a list of events recorded by the Council on the basis that they may have the potential or actual environmental consequences that may represent a breach of a consent or provision in a Regional Plan.
L/s	Litres per second.
LEL	Lower Explosive Limit. The percentage of the lower explosive limit, expressed as methane, that is detected in the air sampled.
m ²	Square Metres.
mg/m ³	Milligrams per cubic metre.
MCI	Macroinvertebrate community index; a numerical indication of the state of biological life in a stream that takes into account the sensitivity of the taxa present to organic pollution in stony habitats.
MfE	Ministry for the Environment.
Mixing zone	The zone below a discharge point where the discharge is not fully mixed with the receiving environment. For a stream, conventionally taken as a length equivalent to 7 times the width of the stream at the discharge point.
mS/m	Millisiemens per metre.
NES	National Environmental Standards
NO _x	Nitrogen oxides.
NTU	Nephelometric Turbidity Unit, a measure of the turbidity of water.
O&G	Oil and grease, defined as anything that will dissolve into a particular organic solvent (e.g. hexane). May include both animal material (fats) and mineral matter (hydrocarbons).
pH	A numerical system for measuring acidity in solutions, with 7 as neutral. Numbers lower than 7 are increasingly acidic and higher than 7 are increasingly alkaline. The scale is logarithmic i.e. a change of 1 represents a ten-fold change in strength. For example, a pH of 4 is ten times more acidic than a pH of 5.

Physicochemical	Measurement of both physical properties (e.g. temperature, clarity, density) and chemical determinants (e.g. metals and nutrients) to characterise the state of an environment.
PM ₁₀	Relatively fine airborne particles (less than 10 micrometre diameter, respectively).
Resource consent	Refer Section 87 of the RMA. Resource consents include land use consents (refer Sections 9 and 13 of the RMA), coastal permits (Sections 12, 14 and 15), water permits (Section 14) and discharge permits (Section 15).
RMA	<i>Resource Management Act 1991</i> and including all subsequent amendments.
SS	Suspended solids.
SQMCI	Semi quantitative macroinvertebrate community index.
Temp	Temperature, measured in °C (degrees Celsius).
Turb	Turbidity, expressed in NTU.
µg/m ³	Micrograms per cubic metre of air.

For further information on analytical methods, contact an Environmental Quality Manager.

Bibliography and references

- Ministry for the Environment. 2018. Best Practice Guidelines for Compliance, Monitoring and Enforcement under the Resource Management Act 1991. Wellington: Ministry for the Environment.
- Taranaki Regional Council (2022): Ambient Gas (PM10, NOx, CO and LEL) Monitoring at Kapuni Production Station during the 2021-2022 monitoring year. Internal memorandum.
- Taranaki Regional Council (2022): Biomonitoring of the Kapuni Stream in relation to the Kapuni Production Station of Todd Petroleum Mining Company Ltd, March 2022. Internal Memorandum KB109.
- Taranaki Regional Council (2022): Todd Petroleum Mining Company Ltd Kapuni Production Station Monitoring Programme Annual Report 2020-2021. Technical Report 2021-36.
- Taranaki Regional Council (2020): Todd Petroleum Mining Company Ltd Kapuni Production Station Monitoring Programme Annual Report 2019-2020. Technical Report 2020-59.
- Taranaki Regional Council (2020): Todd Petroleum Mining Company Ltd Kapuni Production Station Monitoring Programme Annual Report 2018-2019. Technical Report 2019-63.
- Taranaki Regional Council (2019): Shell Taranaki Ltd Kapuni Production Station Monitoring Programme Annual Report 2017-2018. Technical Report 2018-74.
- Taranaki Regional Council (2018): Shell Taranaki Ltd Kapuni Production Station Monitoring Programme Annual Report 2016-2017. Technical Report 2017-58.
- Taranaki Regional Council (2017): Shell Todd Oil Services Ltd Kapuni Production Station Monitoring Programme Annual Report 2015-2016. Technical Report 2016-24.
- Taranaki Regional Council (2016): Shell Todd Oil Services Ltd Maui and Kapuni Production Stations Monitoring Programmes Annual Report 2014-2015. Technical Report 2015-103.
- Taranaki Regional Council (2015): Shell Todd Oil Services Ltd Maui and Kapuni Production Stations Monitoring Programmes Biennial Report 2012-2014. Technical Report 2014-41.
- Taranaki Regional Council (2012): Shell Todd Oil Services Ltd Maui and Kapuni Production Stations Monitoring Programmes Annual Report 2011-2012. Technical Report 2012-35.
- Taranaki Regional Council (2011): Shell Todd Oil Services Ltd Maui and Kapuni Production Stations Monitoring Programmes Annual Report 2010-2011. Technical Report 2011-74.
- Taranaki Regional Council (2010): Shell Todd Oil Services Ltd Maui and Kapuni Production Stations Monitoring Programmes Annual Report 2009-2010. Technical Report 2010-98.
- Taranaki Regional Council (2009): Shell Todd Oil Services Ltd Maui and Kapuni Production Stations Monitoring Programmes Annual Report 2008-2009. Technical Report 2009-28.
- Taranaki Regional Council (2008): Shell Todd Oil Services Ltd Maui and Kapuni Production Stations Monitoring Programmes Annual Report 2007-2008. Technical Report 2008-14.
- Taranaki Regional Council (2007): Shell Todd Oil Services Ltd Maui and Kapuni Production Stations Monitoring Programmes Annual Report 2006-2007. Technical Report 2007-72.
- Taranaki Regional Council (2007): Shell Todd Oil Services Maui and Kapuni Monitoring Programme Annual Report 2005-2006. Technical Report 2006-51.
- Taranaki Regional Council (2005): Shell Todd Oil Services Maui and Kapuni Monitoring Programme Annual Report 2004/2005. Technical Report 2005-66.

- Taranaki Regional Council (2004): Shell Todd Oil Services Ltd Compliance Monitoring Programme Annual Report 2003/2004. Technical Report 2004-31.
- Taranaki Regional Council (2003): Shell Todd Oil Services Ltd Compliance Monitoring Programme Annual Report 2002/2003. Technical Report 2003-63.
- Taranaki Regional Council (2002): Shell Todd Oil Services Ltd Compliance Monitoring Programme Annual Report 2001/2002. Technical Report 2002-62.
- Taranaki Regional Council (2001): Shell Todd Oil Services Ltd Compliance Monitoring Programme Annual Report 2000/2001. Technical Report 2001-90.
- Taranaki Regional Council (2000): Shell Todd Oil Services Ltd Compliance Monitoring Programme Annual Report 1999/2000. Technical Report 00-12.
- Taranaki Regional Council (1999): Shell Todd Oil Services Ltd Compliance Monitoring Programme Annual Report 1998/1999. Technical Report 99-50.
- Taranaki Regional Council (1998): Shell Todd Oil Services Ltd Compliance Monitoring Programme Annual Report 1997/1998. Technical Report 98-35.
- Taranaki Regional Council (1997): Shell Todd Oil Services Ltd Compliance Monitoring Programme Annual Report 1996/1997. Technical Report 97-30.
- Taranaki Regional Council (1996): Shell Todd Oil Services Ltd Compliance Monitoring Programme Annual Report 1995/1996. Technical Report 96-59.
- Taranaki Regional Council (1995): Shell Todd Oil Services Ltd Compliance Monitoring Programme Annual Report 1994/1995. Technical Report 95-35.
- Taranaki Regional Council (1994): Shell Todd Oil Services Ltd Compliance Monitoring Programme Annual Report 1993/1994. Technical Report 94-46.
- Taranaki Regional Council (1993): Shell Todd Oil Services Ltd Compliance Monitoring Programme Annual Report 1992/1993. Technical Report 92-31.
- Taranaki Regional Council (1992): Shell Todd Oil Services Ltd Compliance Monitoring Programme Annual Report 1991/1992. Technical Report 92-31A.
- Taranaki Regional Council (1991): Shell Todd Oil Services Ltd Compliance Monitoring Programme Annual Report 1990/1991. Technical Report 91-31.
- Taranaki Regional Council (1990): Shell Todd Oil Services Ltd Compliance Monitoring Programme Annual Report 1989/1990. Technical Report 90-9.

Appendix I

Resource consents held by Todd Petroleum Mining Company Ltd

(For a copy of the signed resource consent
please contact the TRC Consents department)

Water abstraction permits

Section 14 of the RMA stipulates that no person may take, use, dam or divert any water, unless the activity is expressly allowed for by a resource consent or a rule in a regional plan, or it falls within some particular categories set out in Section 14. Permits authorising the abstraction of water are issued by the Council under Section 87(d) of the RMA.

Water discharge permits

Section 15(1)(a) of the RMA stipulates that no person may discharge any contaminant into water, unless the activity is expressly allowed for by a resource consent or a rule in a regional plan, or by national regulations. Permits authorising discharges to water are issued by the Council under Section 87(e) of the RMA.

Air discharge permits

Section 15(1)(c) of the RMA stipulates that no person may discharge any contaminant from any industrial or trade premises into air, unless the activity is expressly allowed for by a resource consent, a rule in a regional plan, or by national regulations. Permits authorising discharges to air are issued by the Council under Section 87(e) of the RMA.

Discharges of wastes to land

Sections 15(1)(b) and (d) of the RMA stipulate that no person may discharge any contaminant onto land if it may then enter water, or from any industrial or trade premises onto land under any circumstances, unless the activity is expressly allowed for by a resource consent, a rule in a regional plan, or by national regulations. Permits authorising the discharge of wastes to land are issued by the Council under Section 87(e) of the RMA.

Land use permits

Section 13(1)(a) of the RMA stipulates that no person may in relation to the bed of any lake or river use, erect, reconstruct, place, alter, extend, remove, or demolish any structure or part of any structure in, on, under, or over the bed, unless the activity is expressly allowed for by a resource consent, a rule in a regional plan, or by national regulations. Land use permits are issued by the Council under Section 87(a) of the RMA.

Coastal permits

Section 12(1)(b) of the RMA stipulates that no person may erect, reconstruct, place, alter, extend, remove, or demolish any structure that is fixed in, on, under, or over any foreshore or seabed, unless the activity is expressly allowed for by a resource consent, a rule in a regional plan, or by national regulations. Coastal permits are issued by the Council under Section 87(c) of the RMA.

Discharge Permit
Pursuant to the Resource Management Act 1991
a resource consent is hereby granted by the
Taranaki Regional Council

Name of
Consent Holder: Todd Petroleum Mining Company Limited
PO Box 802
New Plymouth 4340

Decision Date: 1 August 2011

Commencement Date: 1 August 2011

Conditions of Consent

Consent Granted: To discharge treated stormwater from the Kapuni Production Station into the Kapuni Stream

Expiry Date: 1 June 2029

Review Date(s): June 2023 and in accordance with special condition 8

Site Location: Kapuni Production Station, Palmer Road, Kapuni

Grid Reference (NZTM) 1701051E-5629618N

Catchment: Kapuni

*For General, Standard and Special conditions
pertaining to this consent please see reverse side of this document*

General condition

- a. The consent holder shall pay to the Taranaki Regional Council all the administration, monitoring and supervision costs of this consent, fixed in accordance with section 36 of the Resource Management Act 1991.

Special conditions

1. The consent holder shall at all times adopt the best practicable option, as defined in section 2 of the Resource Management Act 1991, to prevent or minimise any adverse effects on the environment from the exercise of this consent.
2. The stormwater discharged shall be from a catchment area not exceeding four hectares.
3. All stormwater shall be directed for treatment through the stormwater treatment system for discharge in accordance with the special conditions of this permit.
4. Constituents of the discharge shall meet the standards shown in the following table.

<u>Constituent</u>	<u>Standard</u>
pH	Within the range 6.0 to 9.0
suspended solids	Concentration not greater than 100 gm ⁻³
total recoverable hydrocarbons	Concentration not greater than 15 gm ⁻³
chloride	Concentration not greater than 50 gm ⁻³

This condition shall apply before entry of the treated stormwater into the receiving waters at a designated sampling point approved by the Chief Executive, Taranaki Regional Council.

5. After allowing for reasonable mixing, within a mixing zone extending 25 metres downstream of the discharge point, the discharge shall not, either by itself or in combination with other discharges, give rise to any or all of the following effects in the Kapuni Stream:
 - a) the production of any conspicuous oil or grease films, scums or foams, or floatable or suspended materials;
 - b) any conspicuous change in the colour or visual clarity;
 - c) any emission of objectionable odour;
 - d) the rendering of fresh water unsuitable for consumption by farm animals;
 - e) any significant adverse effects on aquatic life.
6. The consent holder shall maintain a contingency plan. The contingency plan shall be adhered to in the event of a spill or emergency and shall, to the satisfaction of the Chief Executive, Taranaki Regional Council, detail measures and procedures to be undertaken to prevent spillage or accidental discharge of contaminants not authorised by this consent and measures to avoid, remedy or mitigate the environmental effects of such a spillage or discharge.

7. The consent holder shall notify the Chief Executive, Taranaki Regional Council, prior to making any changes to the processes or operations undertaken at the site, or the chemicals used or stored on site, that could alter the nature of the discharge. Any such change shall then only occur following receipt of any necessary approval under the Resource Management Act.
8. In accordance with section 128 and section 129 of the Resource Management Act 1991, the Taranaki Regional Council may serve notice of its intention to review, amend, delete or add to the conditions of this resource consent by giving notice of review:
 - a) during the month of June 2017 and/or June 2023; and/or
 - b) within 3 months of receiving a notification under special condition 7 above;

for the purpose of ensuring that the conditions are adequate to deal with any adverse effects on the environment arising from the exercise of this resource consent, which were either not foreseen at the time the application was considered or which it was not appropriate to deal with at the time.

Transferred at Stratford on 1 August 2017

For and on behalf of
Taranaki Regional Council

A D McLay
Director - Resource Management

Discharge Permit
Pursuant to the Resource Management Act 1991
a resource consent is hereby granted by the
Taranaki Regional Council

Name of Consent Holder: Todd Petroleum Mining Company Limited
PO Box 802
New Plymouth 4340

Decision Date (Change): 3 May 2019

Commencement Date (Change): 3 May 2019 (Granted Date: 16 November 2017)

Conditions of Consent

Consent Granted: To discharge emissions into the air from combustion involving flaring of petroleum products and miscellaneous emissions incidental to the treatment of gas at the Kapuni Production Station

Expiry Date: 1 June 2035

Review Date(s): June 2023, June 2029

Site Location: Kapuni Production Station, 318 Palmer Road, Kapuni

Grid Reference (NZTM) 1701129E-5629766N

*For General, Standard and Special conditions
pertaining to this consent please see reverse side of this document*

General condition

- a. The consent holder shall pay to the Taranaki Regional Council all the administration, monitoring and supervision costs of this consent, fixed in accordance with section 36 of the Resource Management Act 1991.

Special conditions

Exercise of consent

1. The consent holder shall at all times adopt the best practicable option (as defined in section 2 of the Resource Management Act 1991) to prevent or minimise any actual or likely adverse effects on the environment associated with the discharge of contaminants into the environment arising from the emissions to air from the flare.

Recording and submitting information

2. The consent holder shall keep and maintain a log of all continuous flaring incidents lasting longer than 5 minutes and any intermittent flaring lasting for an aggregate of 10 minutes or longer in any 60-minute period. The log shall contain the date, the start and finish times, the quantity and type of material flared, and the reason for flaring. The log shall be made available to the Chief Executive, Taranaki Regional Council, upon request, and summarised annually in the report required under condition 4. Flaring, under normal operation in the low pressure flare, of rich mono-ethylene glycol degasser vapour, condensate tank vapours, non-condensibles from tri-ethylene glycol/mono-ethylene glycol regeneration and purge gas shall be excluded from this requirement.
3. The consent holder shall supply to the Taranaki Regional Council each month a copy of flaring information comprising: the type and amount of material flared (including any gas used to maintain a pilot flame), the date this was flared, the reason why flaring was undertaken, and an indication of whether smoke was produced from such flaring events.
4. The consent holder shall provide to the Taranaki Regional Council during August of each year, for the duration of this consent, a report:
 - a) detailing gas combustion at the production station flare, including but not restricted to routine operational flaring and flaring logged in accordance with condition 2;
 - b) detailing any measures that have been undertaken by the consent holder to improve the energy efficiency of the production station;
 - c) detailing any measures to reduce smoke emissions;
 - d) detailing any measures to reduce flaring;
 - e) addressing any other issue relevant to the minimisation or mitigation of emissions from the production station flare; and
 - f) detailing any complaints received and any measures undertaken to address complaints.
5. The consent holder shall keep and make available to the Chief Executive, Taranaki Regional Council, upon request, a record of all smoke emitting incidents, noting time, duration and cause. The consent holder shall also keep, and make available to the Chief Executive, upon request, a record of all complaints received as a result of the exercise of this consent.

Information and notification

6. The consent holder shall make available to the Chief Executive, Taranaki Regional Council upon request, an analysis of a typical gas and/or condensate stream from the Manutahi, Kauri and Tariki Formations, covering sulphur compound content and the content of compounds containing six or more carbon atoms in their molecular structure.
7. Prior to undertaking any alterations to the plant equipment, processes or operations, which may substantially alter the nature or quantity of flare emissions other than as described in the consent application, the consent holder shall first consult with the Chief Executive, Taranaki Regional Council, and shall obtain any necessary approvals under the Resource Management Act 1991.
8. The consent holder shall notify the Chief Executive, Taranaki Regional Council, as soon as practicable, whenever the continuous flaring of hydrocarbons (other than the flaring of rich mono-ethylene glycol degasser vapour, condensate tank vapours, non-condensibles from tri-ethylene glycol/mono-ethylene glycol regeneration and purge gas) is expected to occur for more than five minutes in duration.

Preventing and minimising emissions

9. The discharges authorised by this consent shall not, whether alone or in conjunction with any other emissions from the site arising, give rise to any levels of odour or dust or smoke that are offensive or obnoxious or objectionable at or beyond the boundary of the site.
10. The consent holder shall not discharge any contaminant to air from the site at a rate or a quantity such that the contaminant, whether alone or in combination with other contaminants, is or is liable to be hazardous or toxic or noxious at or beyond the boundary of the site.
11. The consent holder shall control all emissions of carbon monoxide, nitrogen dioxide, fine particles (PM10) and sulphur dioxide to the atmosphere from the site, in order that the maximum ground level concentration of any of these contaminants arising from the exercise of this consent measured under ambient conditions does not exceed the relevant ambient air quality standard as set out in the Resource Management (National Environmental Standards for Air Quality Regulations, 2004) at or beyond the boundary of the property on which the wellsite is located.
12. The consent holder shall control discharges to the atmosphere from the flare of contaminants, other than those addressed by the *Resource Management (National Environmental Standards for Air Quality) Regulations, 2004*, whether alone or in conjunction with any other emissions from the site, in order that the maximum ground level concentration for any particular contaminant arising from the exercise of this consent, measured at or beyond the boundary of the site, is not increased above background levels:

Consent 4054-6.1

- a) by more than 1/30th of the relevant Workplace Exposure Standard-Time Weighted Average (exposure averaged over a duration as specified for the Workplace Exposure Standard-Time Weighted Average), or by more than 1/10th of the Workplace Exposure Standard-Short Term Exposure Limit over any short period of time (all terms as defined in Workplace Exposure Standards, 2002, Department of Labour); or
- b) if no Short Term Exposure Limit is set, by more than the General Excursion Limit at any time (all terms as defined in Workplace Exposure Standards, 2002, Department of Labour or any subsequent reviews).

Advice Note:

In exercising this consent the consent holder must also comply with any discharge standard required by Regulations. At the time of issuing this consent the 'Resource Management (National Environmental Standards for Air Quality) Regulations, 2004' set limits on discharge of carbon monoxide, nitrogen dioxide, fine particles (PM₁₀) and sulphur dioxide.

Lapse

13. This consent shall lapse on 31 December 2022, unless the consent is given effect to before the end of that period or the Taranaki Regional Council fixes a longer period pursuant to section 125(1)(b) of the Resource Management Act 1991.

Review

14. In accordance with section 128 and section 129 of the Resource Management Act 1991, the Taranaki Regional Council may serve notice of its intention to review, amend, delete or add to the conditions of this resource consent by giving notice of review during the month of June 2023 and/or June 2029, for the purposes of:
 - a) dealing with any significant adverse effect on the environment arising from the exercise of the consent which was not foreseen at the time the application was considered or which it was not appropriate to deal with at the time; and/or
 - b) requiring the consent holder to adopt the best practicable option to remove or reduce any adverse effect on the environment caused by the discharge; and/or
 - c) to alter, add or delete limits on mass discharge quantities or discharge or ambient concentrations of any contaminant or contaminants.

Signed at Stratford on 3 May 2019

For and on behalf of
Taranaki Regional Council

A D McLay
Director - Resource Management

Land Use Consent
Pursuant to the Resource Management Act 1991
a resource consent is hereby granted by the
Taranaki Regional Council

Name of
Consent Holder: Todd Petroleum Mining Company Limited
PO Box 802
New Plymouth 4340

Decision Date: 13 February 2002

Commencement Date: 13 February 2002

Conditions of Consent

Consent Granted: To erect, place, use and maintain a concrete ford on the bed of the Kapuni Stream for access purposes

Expiry Date: 1 June 2023

Site Location: 318 Palmer Road, Kapuni

Grid Reference (NZTM) 1701240E-5629760N

Catchment: Kapuni

*For General, Standard and Special conditions
pertaining to this consent please see reverse side of this document*

General conditions

- a) That on receipt of a requirement from the Chief Executive, Taranaki Regional Council (hereinafter the Chief Executive), the consent holder shall, within the time specified in the requirement, supply the information required relating to the exercise of this consent.
- b) That unless it is otherwise specified in the conditions of this consent, compliance with any monitoring requirement imposed by this consent must be at the consent holder's own expense.
- c) That the consent holder shall pay to the Council all required administrative charges fixed by the Council pursuant to section 36 in relation to:
 - i) the administration, monitoring and supervision of this consent; and
 - ii) charges authorised by regulations.

Special conditions

1. The initial construction and any further disturbance of parts of the riverbed covered by water and/or any works which may result in downstream discolouration of water shall be undertaken only between 1 November and 30 April, except where this requirement is waived in writing by the Chief Executive, Taranaki Regional Council.
2. The consent holder shall notify the Taranaki Regional Council at least 48 hours prior to the commencement and upon completion of any subsequent maintenance works which would involve disturbance of or deposition to the riverbed or discharges to water.
3. The structure(s) authorised by this consent shall be constructed generally in accordance with the documentation submitted in support of the application and shall be maintained to ensure the conditions of this consent are met.
4. The consent holder shall adopt the best practicable option to avoid or minimise the discharge of silt or other contaminants into water or onto the riverbed and to avoid or minimise the disturbance of the riverbed and any adverse effects on water quality.
5. The consent holder shall ensure that the area and volume of riverbed disturbance shall, so far as is practicable, be minimised and any areas which are disturbed shall, so far as is practicable, be reinstated.
6. The structure which is the subject of this consent shall not obstruct fish passage.
7. The structure(s) authorised by this consent shall be removed and the area reinstated, if and when the structure(s) are no longer required. The consent holder shall notify the Taranaki Regional Council at least 48 hours prior to structure(s) removal and reinstatement.

Consent 5960-1

8. The Taranaki Regional Council may review any or all of the conditions of this consent by giving notice of review during the month of June 2005, June 2011, and June 2017, for the purpose of ensuring that the conditions adequately deal with the environmental effects arising from the exercise of this consent, which were either not foreseen at the time the application was considered or which it was not appropriate to deal with at the time.

Transferred at Stratford on 1 August 2017

For and on behalf of
Taranaki Regional Council

A D McLay
Director - Resource Management

Land Use Consent
Pursuant to the Resource Management Act 1991
a resource consent is hereby granted by the
Taranaki Regional Council

Name of
Consent Holder: Todd Petroleum Mining Company Limited
PO Box 802
New Plymouth 4340

Decision Date: 16 April 2013

Commencement Date: 16 April 2013

Conditions of Consent

Consent Granted: To disturb the bed of the Kapuni Stream for the purpose of undertaking maintenance work on the fire water intake chamber

Expiry Date: 1 June 2029

Review Date(s): June 2023

Site Location: Kapuni Production Station, 318 Palmer Road, Kapuni

Grid Reference (NZTM) 1701162E-5629698N

Catchment: Kapuni

*For General, Standard and Special conditions
pertaining to this consent please see reverse side of this document*

General condition

- a. The consent holder shall pay to the Taranaki Regional Council all the administration, monitoring and supervision costs of this consent, fixed in accordance with section 36 of the Resource Management Act 1991.

Special conditions

1. The consent holder shall notify the Chief Executive, Taranaki Regional Council, in writing at least 48 hours prior to the commencement of work. Notification shall include the consent number and a brief description of the activity consented and be emailed to worknotification@trc.govt.nz.
2. The consent holder shall adopt the best practicable option, as defined in section 2 of the Resource Management Act 1991, to avoid or minimise the discharge of sediments or other contaminants into water or onto the riverbed and to avoid or minimise the disturbance of the riverbed and any adverse effects on water quality.
3. The consent holder shall ensure that the area and volume of stream bed disturbance is restricted to a practicable minimum.
4. No instream works shall take place between 1 May and 31 October inclusive.
5. The exercise of this consent shall not restrict the passage of fish.
6. This consent shall lapse on 30 June 2018, unless the consent is given effect to before the end of that period or the Taranaki Regional Council fixes a longer period pursuant to section 125(1)(b) of the Resource Management Act 1991.
7. In accordance with section 128 and section 129 of the Resource Management Act 1991, the Taranaki Regional Council may serve notice of its intention to review, amend, delete or add to the conditions of this resource consent by giving notice of review during the month of June 2017 and/or June 2023 for the purpose of ensuring that the conditions are adequate to deal with any adverse effects on the environment arising from the exercise of this resource consent, which were either not foreseen at the time the application was considered or which it was not appropriate to deal with at the time.

Transferred at Stratford on 1 August 2017

For and on behalf of
Taranaki Regional Council

A D McLay
Director - Resource Management

Appendix II

Categories used to evaluate environmental and administrative performance

Categories used to evaluate environmental and administrative performance

Environmental performance is concerned with actual or likely effects on the receiving environment from the activities during the monitoring year. Administrative performance is concerned with the Company's approach to demonstrating consent compliance in site operations and management including the timely provision of information to Council (such as contingency plans and water take data) in accordance with consent conditions.

Events that were beyond the control of the consent holder and unforeseeable (that is a defence under the provisions of the RMA can be established) may be excluded with regard to the performance rating applied. For example loss of data due to a flood destroying deployed field equipment.

The categories used by the Council for this monitoring period, and their interpretation, are as follows:

Environmental Performance

High: No or inconsequential (short-term duration, less than minor in severity) breaches of consent or regional plan parameters resulting from the activity; no adverse effects of significance noted or likely in the receiving environment. The Council did not record any verified unauthorised incidents involving environmental impacts and was not obliged to issue any abatement notices or infringement notices in relation to such impacts.

Good: Likely or actual adverse effects of activities on the receiving environment were negligible or minor at most. There were some such issues noted during monitoring, from self-reports, or during investigations of incidents reported to the Council by a third party but these items were not critical, and follow-up inspections showed they have been dealt with. These minor issues were resolved positively, co-operatively, and quickly. The Council was not obliged to issue any abatement notices or infringement notices in relation to the minor non-compliant effects; however abatement notices may have been issued to mitigate an identified potential for an environmental effect to occur.

For example:

- High suspended solid values recorded in discharge samples, however the discharge was to land or to receiving waters that were in high flow at the time;
- Strong odour beyond boundary but no residential properties or other recipient nearby.

Improvement required: Likely or actual adverse effects of activities on the receiving environment were more than minor, but not substantial. There were some issues noted during monitoring, from self-reports, or during investigations of incidents reported to the Council by a third party. Cumulative adverse effects of a persistent minor non-compliant activity could elevate a minor issue to this level. Abatement notices and infringement notices may have been issued in respect of effects.

Poor: Likely or actual adverse effects of activities on the receiving environment were significant. There were some items noted during monitoring, from self-reports, or during investigations of incidents reported to the Council by a third party. Cumulative adverse effects of a persistent moderate non-compliant activity could elevate an 'improvement required' issue to this level. Typically there were grounds for either a prosecution or an infringement notice in respect of effects.

Administrative performance

High: The administrative requirements of the resource consents were met, or any failure to do this had trivial consequences and were addressed promptly and co-operatively.

Good: Perhaps some administrative requirements of the resource consents were not met at a particular time, however this was addressed without repeated interventions from the Council staff. Alternatively

adequate reason was provided for matters such as the no or late provision of information, interpretation of 'best practical option' for avoiding potential effects, etc.

Improvement required: Repeated interventions to meet the administrative requirements of the resource consents were made by Council staff. These matters took some time to resolve, or remained unresolved at the end of the period under review. The Council may have issued an abatement notice to attain compliance.

Poor: Material failings to meet the administrative requirements of the resource consents. Significant intervention by the Council was required. Typically there were grounds for an infringement notice.