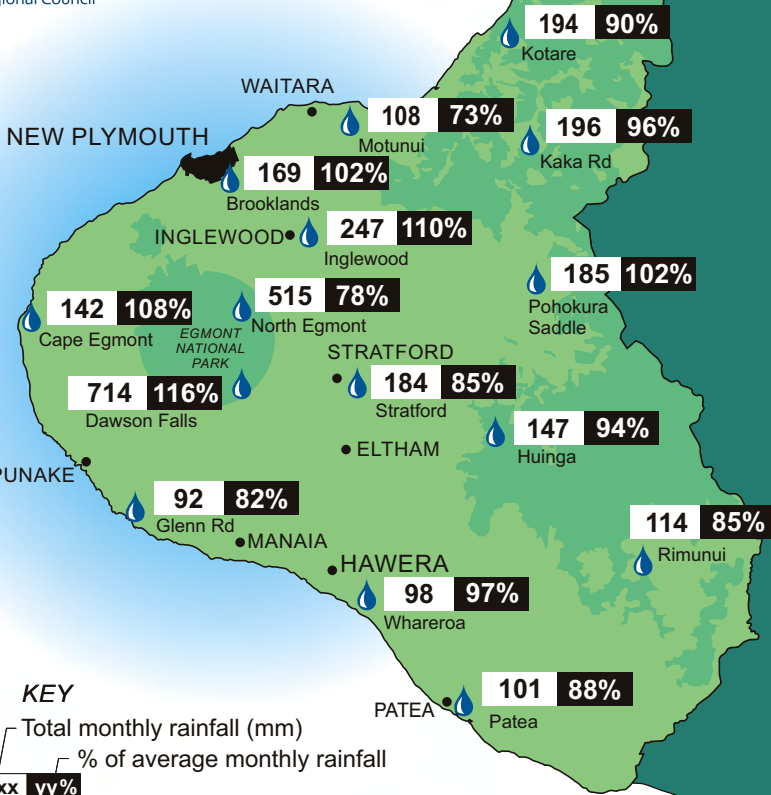


# May 2020 Rainfall

Provisional data only



## KEY

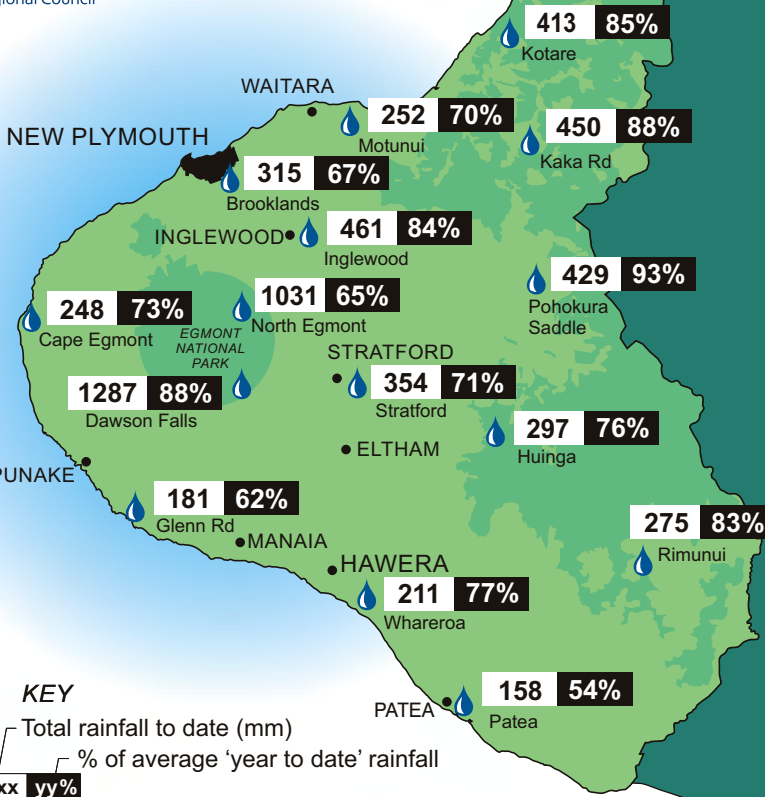
Total monthly rainfall (mm)

% of average monthly rainfall

xxx yy%

# Autumn Rainfall

March to May 2020  
Provisional data only



## KEY

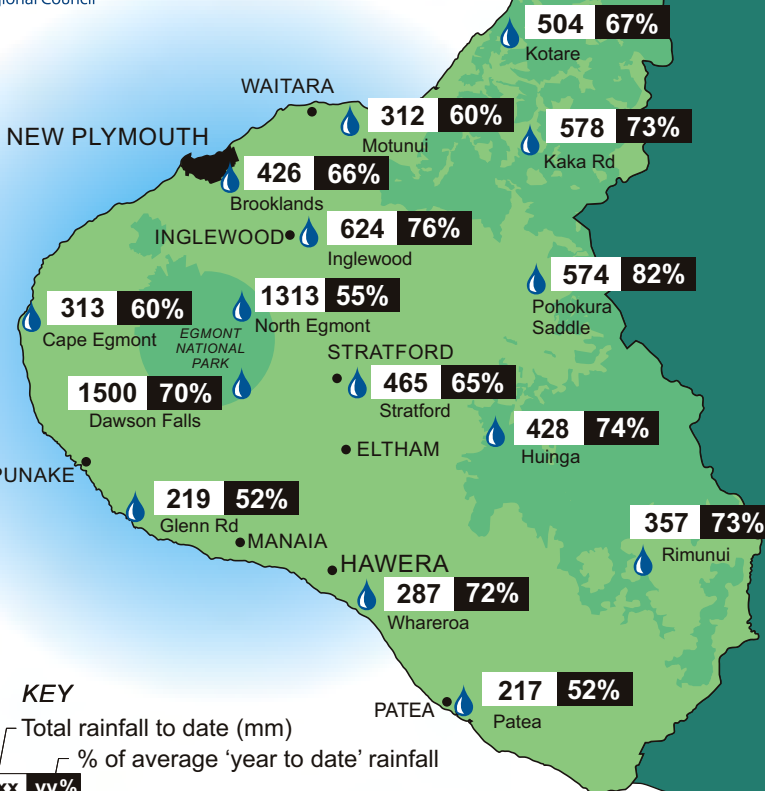
Total rainfall to date (mm)

% of average 'year to date' rainfall

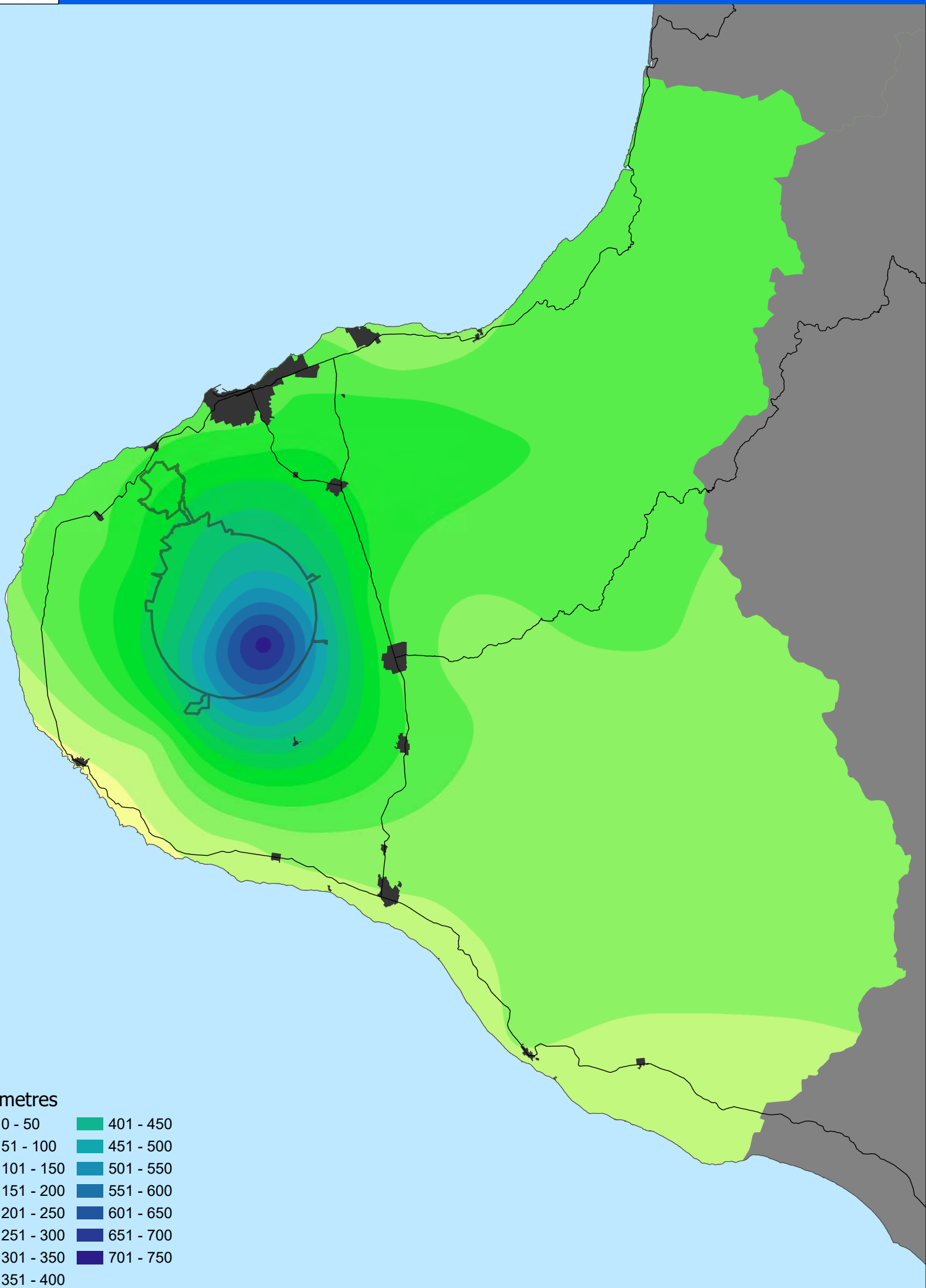
xxx yy%

# Jan-May 2020 Rainfall

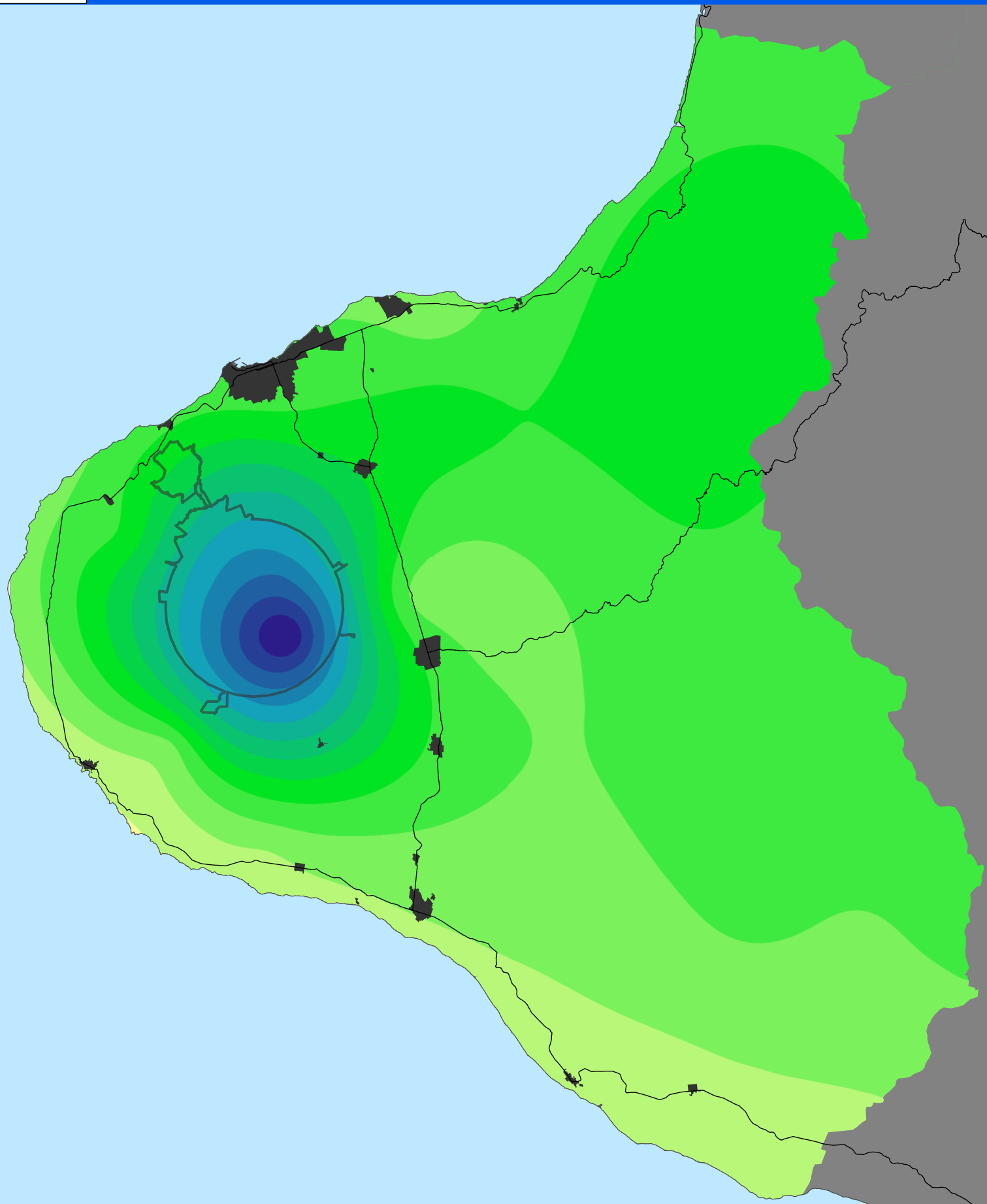
Provisional data only



# May 2020 Rainfall



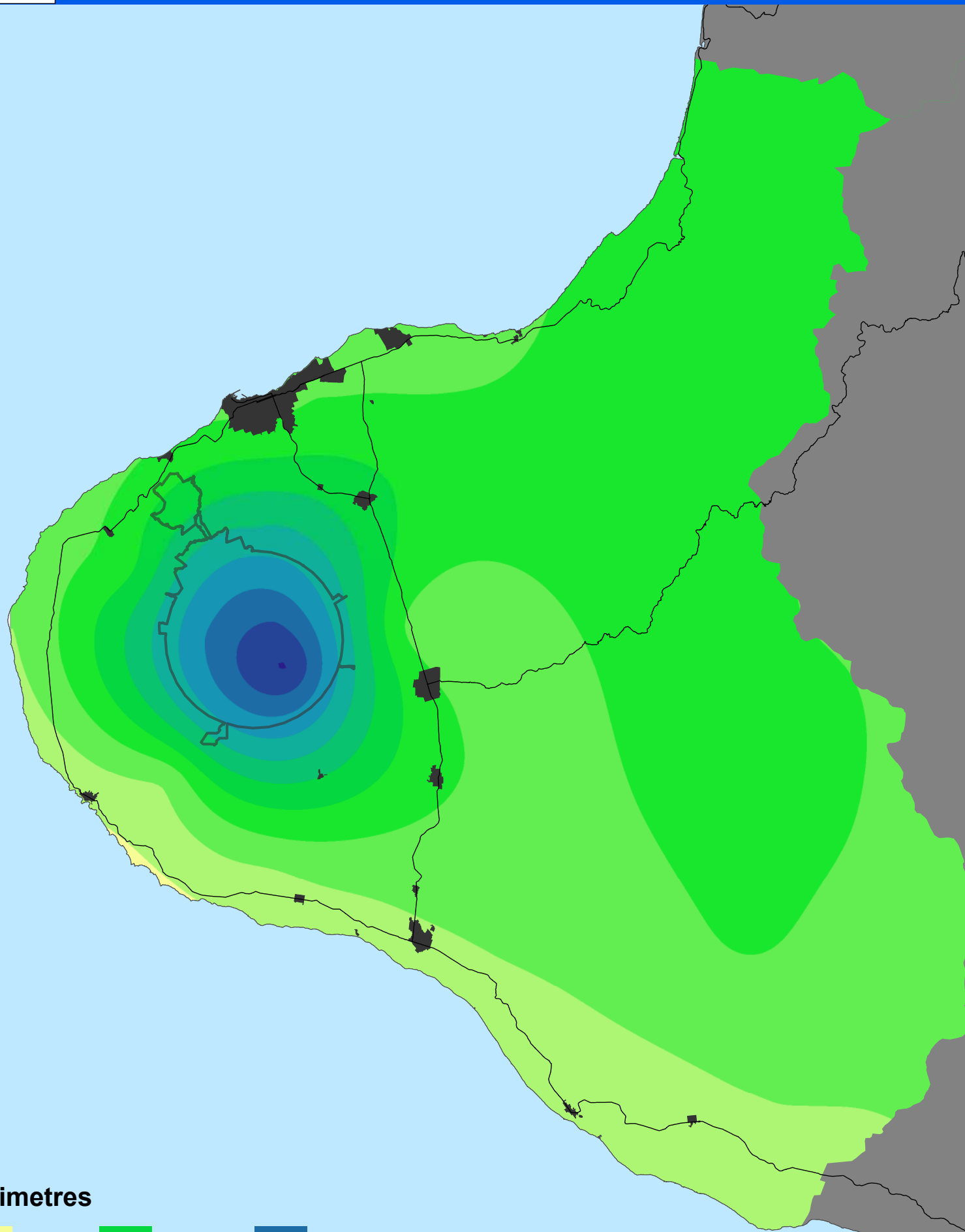
# Autumn 2020 Rainfall



millimetres

0 - 100	501 - 600	1001 - 1100
101 - 200	601 - 700	1101 - 1200
201 - 300	701 - 800	1201 - 1300
301 - 400	801 - 900	
401 - 500	901 - 1000	

# May 2020 Year to Date Rainfall



millimetres

0 - 150	601 - 750	1201 - 1350
151 - 300	751 - 900	1351 - 1500
301 - 450	901 - 1050	1501 - 1650
451 - 600	1051 - 1200	