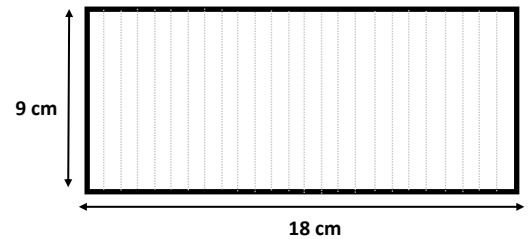




CHEW CARDS

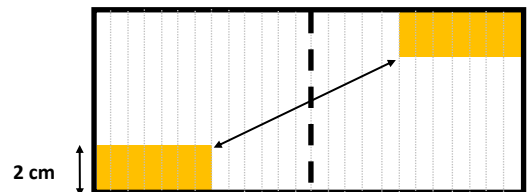
Chew-Track-Cards (CTCs) or Chew Cards are a fantastic way to detect predator presence in these parts. Make a chew card and take it back with you...you can set it up and see who's lurking around!

Step 1: Cut out a piece of 3mm thick corflute 9 cm x 18 cm, with the inner channels / flutes all 9 cm long



Step 2: Prepare a bowl of bait. This could be smooth peanut butter with a little vegetable oil. Add honey (1 honey : 5 PnB) to make the bait extra yummy

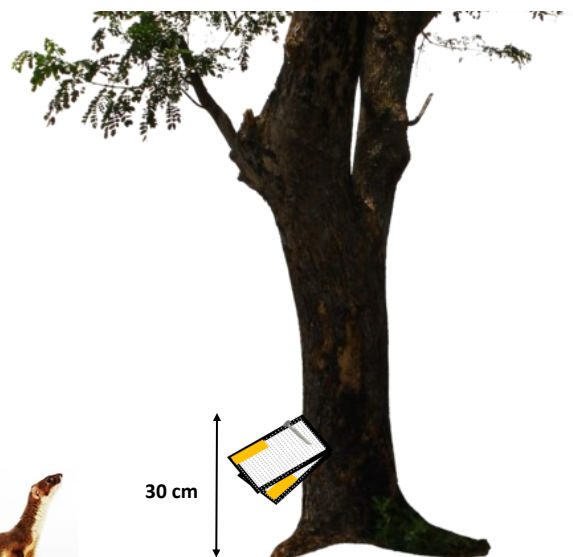
Step 3: Using a knife, fill diagonally opposite corners of the card with peanut butter about 2cm deep **inside** the card's channels / flutes / tunnels



Step 4: Fold the card in half and pierce a 50mm flathead nail about 10mm from the centrefold on the top, and closer to the centrefold on the bottom half. This will set the card at 90° with an open mouth



Step 5: Nail the card on a tree 30cm up from the ground at a 30° angle. *Note: If you have cattle around, place it at 2m high on the tree.* You can also use a fence post



Step 6: Leave the card out for a week and see who came for a nibble. Turn this sheet over to see what chew prints different animals leave!



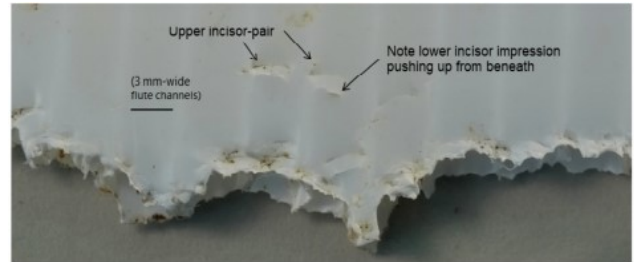
CHEW CARDS

Examine the front and back of your Chew-Track-Cards (CTCs) or Chew Cards carefully and try to identify the pest by its teeth marks.

Remember, more than one pest could've bitten your card!



Possum. Card surface crushed with no holes biting through the card. Two incisor marks prominent across card, curved inwards for bottom jaw



Rat. Card chewed through both bottom and top surfaces. Rough, jagged edges left. Lower incisors (i.e. front teeth) strongly curved



Mouse. One surface removed with the channels / flutes open and exposed with peanut butter removed. Chewed band around the smooth cut edges



Hedgehog. Oval canines puncturing the card, with incisors crushing underneath the card



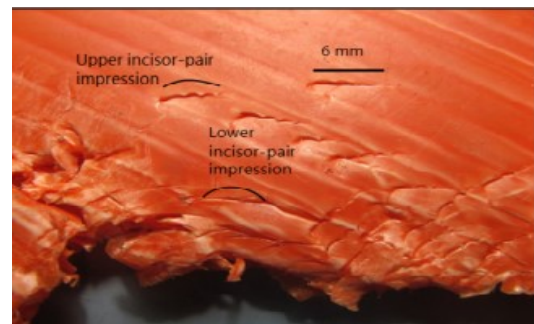
Cats and Mustelids. Circular canines leaving puncture holes. Species depends on distance between holes:

Weasel— 4.5—6.5mm

Stoat— 7.0—9.5mm

Ferret— 10.0—14mm

Cat— >14.5mm



Rabbit / Hare. Card chewed through both bottom and top surfaces. Rough, jagged edges left. Lower incisors (i.e. front teeth) strongly curved

*Big thanks to
Landcare Research (Manaaki Whenua)
for the chew card pictures*