

Get Ready

Volcanic Eruption

Des Paulsen

Taranaki Civil Defence Emergency Management Group



Three phases

- Before an eruption
- During an eruption
- After an eruption

Before an eruption



Taranaki Civil Defence Emergency Management Group

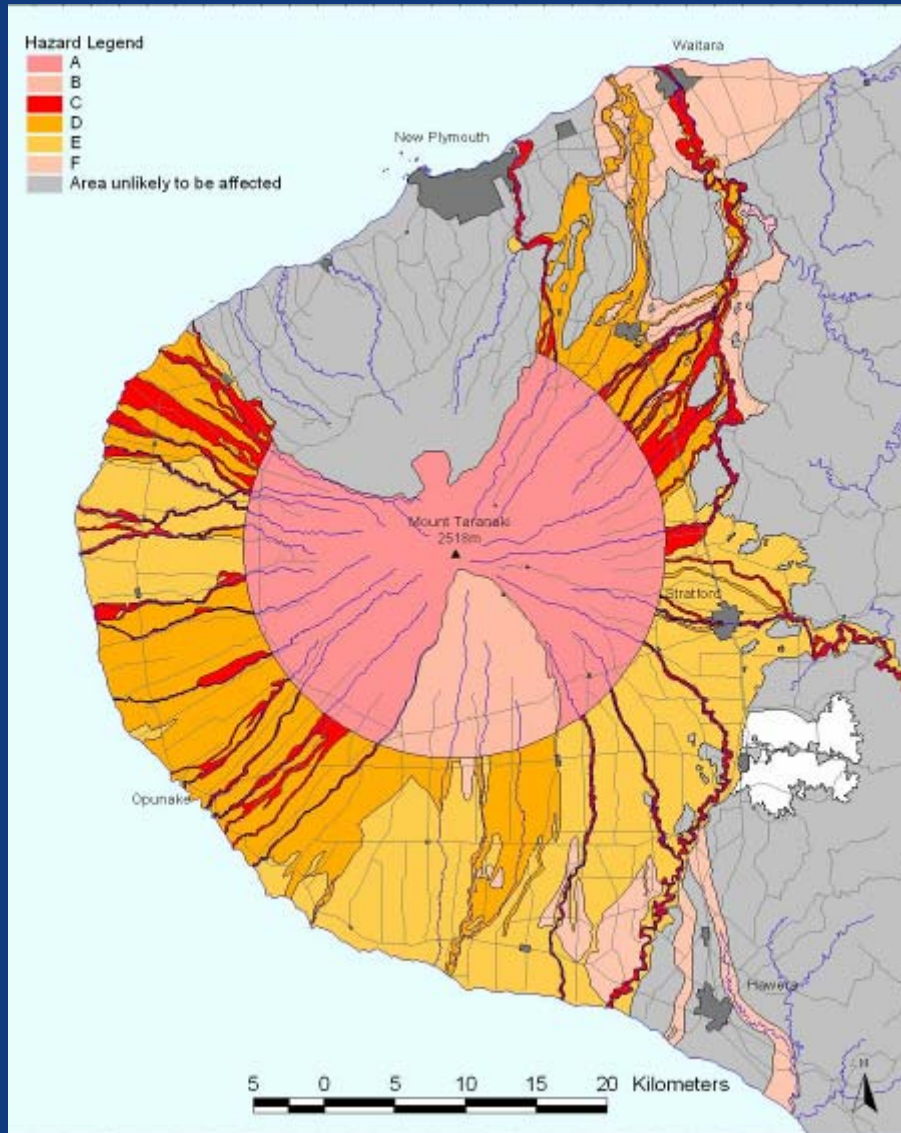


Pre-disaster risk reduction measures

Before purchasing or building your next house

- Area

Volcanic Hazards Map



Prof Vince Neall & Dr B Alloway

- Ground hugging effects (**excludes ashfall**)
- Lava flows, hot ash flows, lahars etc
- A, B and C indicating the areas facing the greatest threat

Ash fall



Taranaki Civil Defence Emergency Management Group



- **Building design**

- Steep, low-friction roofs designed to shed ash loads
- Strengthened roof structures
- Absence of overhanging awnings and gutters
- Adequate sealing of openings
- Raised floor to prevent the entry of minor mudflows

- **Insurance**

Household Plans

A volcanic eruption could affect essential services, travel and communications.

Get your family together and decide:

- Where you will meet
- How you will communicate
- Who is responsible for the emergency and getaway kits

HOUSEHOLD EMERGENCY CHECKLIST
WHAT YOU WILL NEED TO GET THRU

YOUR HOUSEHOLD

ADDRESS: _____

NAMES AND PHONE NUMBERS (INCL MOBILES):

IMPORTANT PHONE NUMBERS

POLICE, FIRE, AMBULANCE: DIAL 111

CIVIL DEFENCE: _____

OTHER: _____

YOUR GETAWAY KIT

Everyone in your house should have a small bag for a Getaway Kit, ready for evacuation. In addition to essential emergency items, this kit should include:

FAMILY DOCUMENTS

- Birth and marriage certificates
- Drivers' licences and passports
- Insurance policies
- Family photos

PERSONAL ITEMS

- Towels, soap, toothbrush and sanitary items
- A change of clothes

EMERGENCY SURVIVAL ITEMS

If you prefer to keep your Emergency Survival Items in the house for everyday use, make sure you know where to find them when an emergency occurs.

FOOD AND WATER – ENOUGH FOR 3 DAYS OR MORE

- Bottled drinking water (at least 3 litres per person per day)
- Water for washing and cooking
- Non-perishable food (canned or dried), can opener
- A primus or gas barbeque to cook on (Check and replace food and water every 12 months)

OTHER EMERGENCY ITEMS

- Waterproof torches and spare batteries
- Radio and spare batteries
- First aid kit and essential medicines
- Toilet paper and large rubbish bags for an emergency toilet
- Face and dust masks
- Pet supplies
- Blankets or sleeping bags
- Wind and rain proof clothing
- Strong shoes for outdoors
- Sun hats and sunscreen (Check all batteries every three months)

SUPPLIES FOR BABIES AND SMALL CHILDREN

- Food, formula and drink
- Change of clothing and nappies
- Favourite toy or activity

OTHER SUPPLIES

- Hearing and sight aids, batteries
- Mobility aids
- Asthma and respiratory aids
- Special food needs

FOR MORE INFORMATION VISIT www.getthru.govt.nz

PRODUCED BY THE MINISTRY OF CIVIL DEFENCE AND EMERGENCY MANAGEMENT

GET READY GET THRU 

Emergency Kits



- Torch and spare batteries
- Radio and spare batteries
- 3 days Emergency Water (3 liters per person)
- 3 days of emergency food
- Portable cooker or BBQ
- First aid kit and essential medicines
- Dust masks

Getaway kits

- Blanket or sleeping bag
- Towels and toiletries
- Children's' needs
- Change of clothing
- Family documents (Birth and marriage certificates, insurance policies, passports and other documents)
- Copies of important family photographs
- Pets and pet supplies



Other measures

- Subscribe to the Taranaki Civil Defence SMS warning system
- Listen to the radio for information and instructions about an eruption:
 - National Radio
 - Newstalk ZB
 - Classic Hits
 - More FM
 - Radio Live
- Make sure your belongings are insured

During an eruption



Taranaki Civil Defence Emergency Management Group



- Listen to your radio for advice
- Close all windows
- Save as much water as possible - fill baths basin and other containers
- Disconnect roof fed water supply if there is ash fall
- Bring pets indoors
- If you must go outside wear and dust mask and goggles
- If possible keep ash out of your gutters and off the roof
- Do not leave your home unless advised to do so

After the eruption is over



Taranaki Civil Defence Emergency Management Group



- If you were evacuated, wait for instructions from Civil Defence before returning home – there may be short periods of inactivity between eruptions



- If your property is affected make sure it is assessed before you move back in and begin cleaning up



Cleaning up

- Wet ash becomes like a glue
- Wet ash becomes heavy
- Ash is abrasive
- Place ash in rubbish bags
- Get advice from your local council on how to dispose of it
- Do not put ash in the storm water system

Useful Information

Internet:

- www.trc.govt.nz/emergency/emergency
- www.getthru.govt.nz
- www.geonet.org.nz

Leaflets and Brochures in your folders:

- Get Ready Get Thru
- Household Plans
- Emergency Water

Questions

