

# Reader's Guide

---

## How the plan works

The plan is divided into seven sections.

Section 1.0 sets the boundaries of the plan's jurisdiction.

Section 2.0 contains definitions of terms that are used in the plan.

Sections 3.0 and 4.0 are the critical sections of the plan.

Section 3.0 contains:

- an overview of the air quality issues in the region;
- objectives sought for air quality in the Taranaki region;
- the policies to implement the objectives; and
- the general methods used to achieve the objectives.

The policies in the plan are an important component of the plan. The policies serve a number of purposes:

- they contain 'criteria' to guide the exercise of the Council's discretion and its decision-making on discharge to air permit applications by identifying the environmental effects of particular concern to the Council;
- they state the Council's position on the acceptability or otherwise of those environmental effects; and
- they state general courses of action the Council will adopt to address particular effects or the effects of particular activities.

Section 4.0 contains regional rules. Rules control the discharge of contaminants to air. They set out standards, terms or conditions for the discharge. The regional rules also set out whether discharges to air are permitted or require an application to be made to the Council for consent to discharge to air.

The regional rules are divided into six groupings which apply throughout the Taranaki region except the coastal marine area. (Discharges to air in the coastal marine area are dealt with in the Regional Coastal Plan for Taranaki). The six groupings of rules cover the following sources of contaminants or activities discharging to air:

- discharges from industrial or trade premises (excluding waste management processes);
- discharges from industrial or trade premises or other places or sources: waste management processes;
- discharges from land: site development, earthworks or the application of soil conditioners;
- discharges from aquaculture or intensive farming processes;

- discharges from the spraying of agrichemicals on production land and within public amenity areas or roadside or railside verges; and
- discharges from the burning of vegetation on production or forested land, or from the burning of tyres and untreated used oil, or fire training activities or fire safety research or education purposes.

The rules are closely linked to the policies which provide guidance on discharge to air permit decisions.

When no rules apply to the discharge of contaminants to air, the Council may use other methods to achieve the objectives and implement the policies in the plan. These methods are listed in Section 3.0 after the policies.

Section 5.0 of the plan sets out information that must be supplied by applicants for a permit to discharge contaminants to air.

Sections 6.0 and 7.0 set out administrative procedures required by law on financial contributions, cross-boundary issues, monitoring and review of the plan.

## Guide to consent applicants

This section of the readers' guide explains, in brief, how to find out whether a discharge of contaminants to air is regulated by the plan, and if so, the steps to be taken in applying for a discharge to air permit.

**Step One:** Consider whether there is a discharge of contaminants to air.

**Step Two:** If no, an air permit is not required.

If yes, find out whether the discharge is from industrial or trade premises, from waste management processes, or from intensive farming or aquaculture processes, involves the discharge to air of agrichemicals, or the burning of vegetation on production or forested land, or the burning of tyres or untreated used oil or fire training activities or fire safety research or education purposes. Refer to the definitions in Section 2.0 of the Plan.

**Step Three:** If the discharge:

- a) is from an **industrial or trade premises** (excluding waste management processes, as dealt with separately), break the activity down into parts. Consider whether the activity involves one or more of the following:
  - i) the discharge to air of contaminants from **combustion**, whether on industrial or trade

- premises or production land (if so, refer to Rules 1 to 7);
  - ii) the discharge to air of contaminants from the **combustion of materials containing metals** (if so, refer to Rule 8);
  - iii) the discharge to air of contaminants from **hydrocarbon well sites or gas treatment or production plants** (if so, refer to Rules 9 to 12);
  - iv) the discharge to air of contaminants **incidental to trade processes** as listed in Rules 13 to 16 (if so, refer to those Rules);
  - v) **abrasive blasting processes** (if so, refer to Rules 17 to 21);
  - vi) other **moveable or fixed industrial sources** as described in Rules 22 to 23 (if so, refer to those Rules);
  - vii) the discharge to air of **heat or water vapour from a fixed source** (if so, refer to Rules 24 to 28); or
  - viii) involves the use of **fumigants** (if so, refer to Rule 29).
- b) is from **waste management processes** (if so refer to Rules 30 to 41).
- c) is from **site development, earthworks or the application of soil conditioners** (if so, refer to Rules 42 to 45).
- d) is from **aquacultural or intensive farming processes**, break the activity down into parts. Consider whether the activity involves one or more of the following:
  - i) the discharge to air of contaminants from **aquacultural processes** (if so, refer to Rule 46);
  - ii) the discharge to air of contaminants from **intensive pig farming** (if so, refer to Rules 47 to 50); and
  - iii) the discharge to air of contaminants from **intensive poultry farming** (if so, refer to Rules 51 to 54).
- e) is from any other industrial or trade premises not listed in any other rule or where the activity is listed in a rule but the standards, terms or conditions for that rule cannot be met **OR**

is from production land, waste management processes, site development, earthworks, the application of soil conditioners, aquacultural or intensive farming processes where the activity is listed in a rule but the standards, terms or conditions for that rule cannot be met.

(if so, Refer to Rule 55).
- f) involves the spraying of **agricultural chemicals** on production land or within public

- amenity areas or roadside or railside verges (if so, refer to Rules 56 to 58);
- g) involves the **burning of vegetation** on production or forested land (if so, refer to Rules 59 and 60);
- h) involves **the burning of tyres or untreated used oil** (if so, refer to Rule 61); or
- i) is from **fire training or fire safety research or education purposes** (if so, refer to 62 and 63).

**Note:** if a discharge is from industrial or trade premises, it will require a discharge to air permit from the Taranaki Regional Council unless the plan expressly permits the discharge, in which case no permit is required. If there are no relevant rules in this plan applying to a discharge and the discharge is not from an industrial or trade premises, then the discharge activity does not require a discharge to air permit from the Taranaki Regional Council.

#### **Step Four**

If the activity is covered by rules in the plan, how is each part of the activity classified? (*Note: if the 'activity' is made up of several parts, several rules and classifications may apply.*)

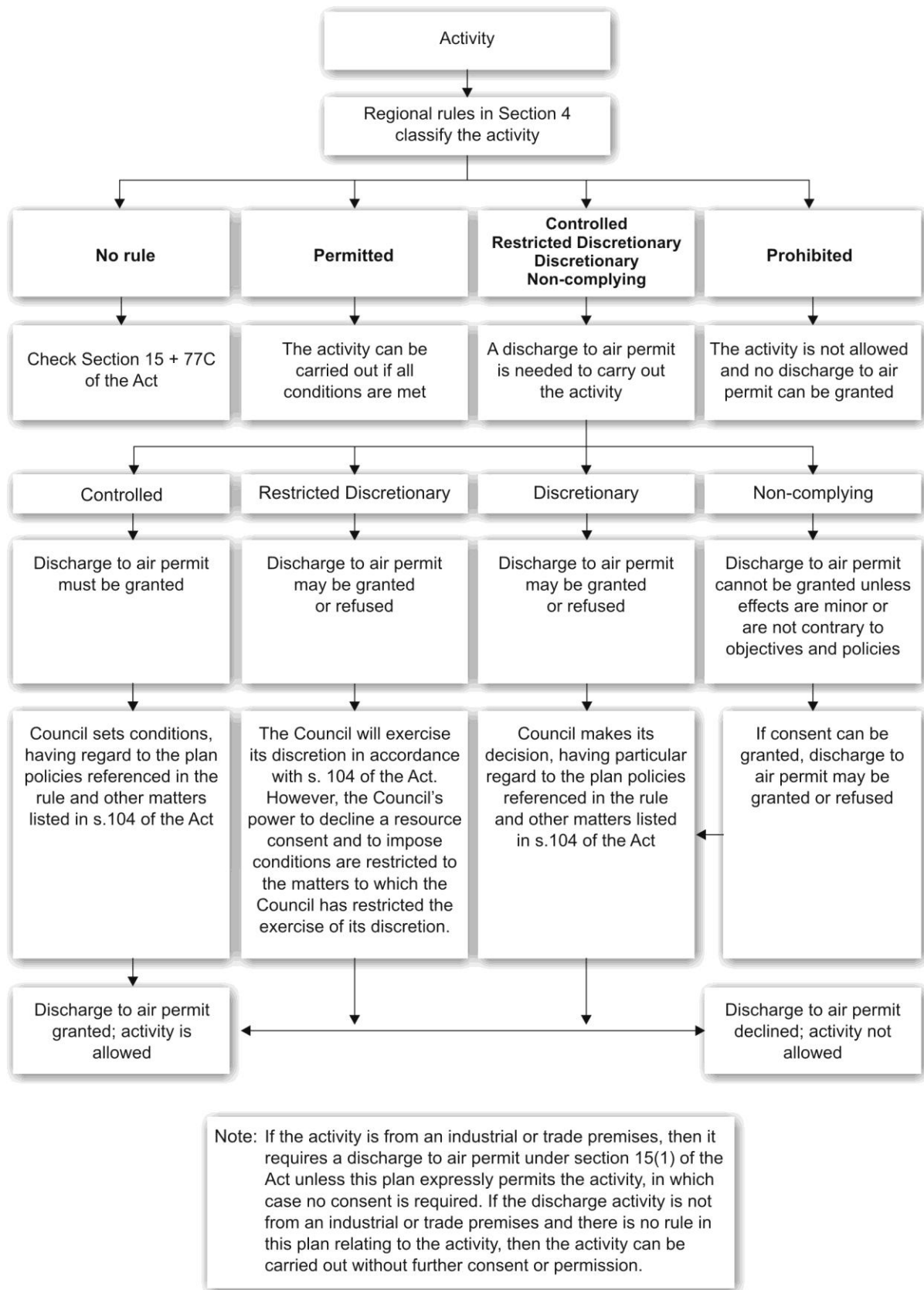
- a) If it is **permitted**, the activity can be carried out provided the conditions are met.
- b) If it is **controlled**, a discharge to air permit is needed and the Council must grant the permit if the standards and terms are met.
- c) If it is **restricted discretionary**, a discharge to air permit is needed, and the Council will decide whether to grant the consent. However, in deciding whether to grant consent, the Council is restricted to exercising its discretion over the list of matters specified in the 'control/discretion' column of the rule.
- d) If it is **discretionary**, a discharge to air permit is needed, and the Council will decide whether to grant the permit. This will usually depend on the effects of the activity and how well the proposed activity fits in with the policies in the Plan.
- e) If it is **non-complying**, a discharge to air permit is needed. The Council cannot grant a consent unless the effects of the activity are minor or the activity is not contrary to the objectives and policies of the plan. Even if this test is satisfied, the Council retains a discretion to grant or refuse a consent for the activity.
- f) If it is **prohibited**, the activity cannot proceed, and no discharge to air permit can be applied for.

Figure 1 (on page xii of the Plan) shows a simplified version of how the activity classifications work. Neither it nor this discussion can be treated as an exact substitute for the provisions of the Act.

- Step Five** If any parts of the activity require a discharge to air permit:
- a) check the policies referenced in the rule tables to find out which effects are of concern; and
  - b) check the policies in Section 3 regarding Māori values; then
  - c) prepare a document which describes the assessment of effects on the environment under Section 5.2 of the Plan; and
  - d) make your discharge to air permit applications to the Taranaki Regional Council, and include the assessment of effects on the environment and any other information required under Section 5.0 of this Plan. Pre-application consultation with the Council is also recommended. Application forms can be obtained from the Taranaki Regional Council's website [www.trc.govt.nz](http://www.trc.govt.nz), from the Council office at 47 Cloten Road, Stratford or by phoning the Taranaki Regional Council on (06) 765 7127.

You may wish to consult with any people likely to be affected by your activity, including tangata whenua if their interests are affected.

- Step Six** If in doubt, particularly regarding the information requirements of Step Five above, or the classification of your activity, telephone the Consents Section at the Taranaki Regional Council on: (06) 765 7127.



**Figure 1:** Activity classification