

Thanks to all those schools who participated in the last SITE Colouring Competition. The entries made a colourful display in the New Plymouth District Council foyer during Seaweed and drew many complimentary comments at the Seaweed Cape Egmont Lighthouse open day. **Winners were:**



5-8 years section

1st Lauren Gunn, *St Joseph's, Opunake*
2nd Michelle Greig, *Normanby*



9-13 years section

1st Aiden Schicker-Marshall, *Riverlea*
2nd Monique Zimmerman, *Inglewood*

Seaweed Celebrate the sea

Another highly successful Seaweed occurred again this year. Many schools entered into the activities. By far the greatest participation from schools involved visits to the rocky shore. The abundance of creatures at the Kawarua rock pools gives children a wonderful insight into the relationships that make these places such an interesting habitat to study.



Children from Spotswood Primary investigate the creatures living in the Kawarua rock pools.

St Patrick's School, Kaponga

St Patrick's School in Kaponga recently spent a morning gauging the health of the water in the Patea River in Stratford. They followed this activity up with a lesson at the Taranaki Regional Council Biology laboratory where they saw the relationship between the insects and our native fish.



Bits'n'Pieces

Environmental Awards

Pembroke School has recently been chosen to receive a Taranaki Regional Council Environmental Award. The school has been involved in propagating and nurturing native trees to plant on the site once occupied by the Visitor Shelter at Dawson Falls. The planting of the trees took place late in Term 1.

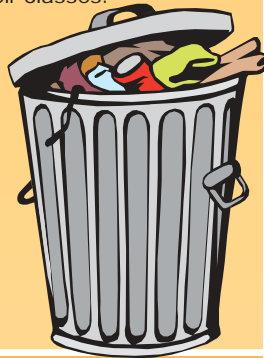
Council Biolab and Display rooms

These two rooms are presently undergoing a revamp of the displays. We still welcome your visits to the Council to see the fish and the displays but ask that you recognise that some sections may be incomplete. Please ring Graeme at the contact below to arrange your visit.



Teacher workshops

Almost 50 teachers participated in the two Teacher Development Workshops during Term 1. There seems to be support for running these workshops after school, especially in the summer term. One of the most pleasing aspects of these workshops has been the number of participants who have borrowed the kits to follow-up the workshops with their classes.



Answers from page 3:

Target word: education

Secret word Puzzle: 1-transfer, 2-kitchen
3-landfill, 4-rubbish, 5-education, 6-television
Secret word puzzle-reduce.

Graeme Phillips - Information Officer
Taranaki Regional Council
Private Bag 713, Stratford

Ph: 06 765 7127 Fax: 06 765 5097
E-mail graeme.phillips@trc.govt.nz
www.trc.govt.nz



TARANAKI REGIONAL COUNCIL
NEWSLETTER TO SCHOOLS

Welcome back to Term 2

After the long hot summer term we will probably be complaining about cold, wet winter!

The first term provided magnificent opportunity for those schools involved in experiences in the outdoors. From monitoring the health of the Kapuni River at Dawson Falls, to examining the mudflow remnant from Mt Taranaki at Airedale Reef in Waitara, the term was full in terms of fieldwork. A feature of all these activities has been the general knowledge and care that young people have for our environment. Another feature has been the participation of the many parents who accompany school groups on these field trips. The opportunity to highlight environmental topics and increase awareness and understanding of environmental issues is an important spin-off from working with school groups.

During Term 1 the Teacher Development Workshops attracted pleasing numbers of teachers. The earlier Pond Community workshops saw seven teachers attend the Stratford workshop and 12 attend the New Plymouth one. Eight teachers attended the local stream workshops in Stratford and 19 participated the New Plymouth stream workshop. A suggestion to offer workshops in south and coastal Taranaki in the future could see the time adjusted to allow more opportunity for questions and discussion, as less travel time would be required.

There will be no actual workshops this term, but in term 3 'What's with the Weather' will feature. More details and registration procedure will come with the next issue of SITE.

Recently Woodleigh School wanted to enrol their whole staff at the stream workshop! Rather than over-subscribe the planned course we arranged a date to deliver the programme to their staff after school. I am more than willing to accommodate your requests, if possible, to deliver any workshops to a whole staff or syndicate. Get in touch, you may be surprised with what we can offer!

Have a great term
Ka kite ano
Graeme



Schools in the Environment

No. 25

REDUCE YOUR RUBBISH
www.reducerrubbish.govt.nz

A national campaign is under way to reduce the amount of rubbish we send to our landfills. Over half of the household

rubbish going in to landfills in Taranaki could be recycled or composted.

This issue of SITE provides support and background for this campaign. The challenge to schools is to consider their waste volume and reduce the amount of green waste and recyclables that they dispose of as rubbish.

Devon Intermediate

Mountain geology

Most of the classes at Devon Intermediate have undertaken a study of the formation of the Taranaki region during their term theme, Te Maunga Taranaki.

The day started at the Plateau carpark where we had a close up view of our present mountain and could see examples of both lava and mud/ash flows that had happened during the formation of Mt Taranaki. Stops on the Plateau road and at the Cardiff cutting gave graphic views of the volcanic history. Driving back towards Inglewood provided first hand evidence of lahar deposits and the path taken during mudflows.

The journey ended at Airedale Reef near Waitara where the Okawa formation mudflow reached the sea.

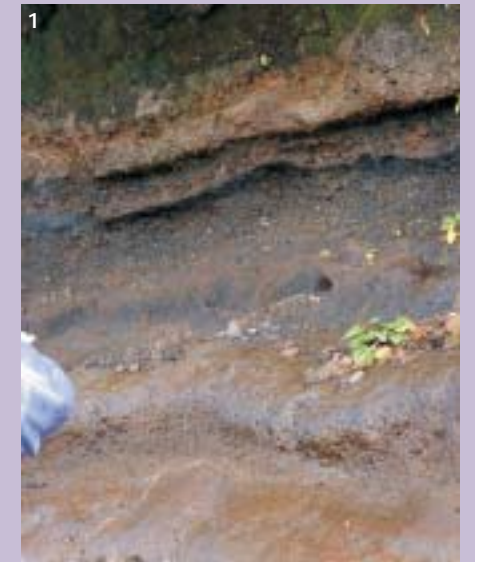


Photo 1: Layers of volcanic ash on Plateau Rd.
Photo 2: Mud, rocks and vegetation at Airedale Reef, Waitara.
Photo 3: 25,000 years of volcanic history visible at the Cardiff cutting.

