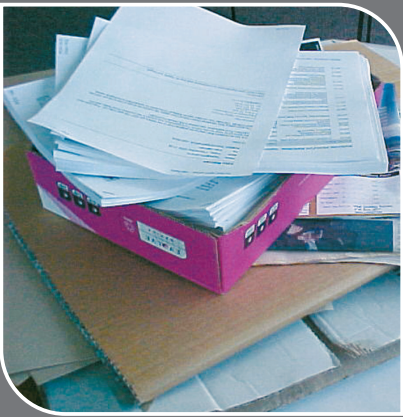


# Our Office Waste

## What to do with it and why

### PAPER



Keep cardboard flat and stacked to side of bin

- NO Soiled Paper
- NO Window Envelopes, Waxed Paper or Carbon Paper
- NO Plastic or Metal (check covers, bindings, packing material)



Paper  
Mixed

### MIXED RECYCLABLES



Plastic 1 & 2 only  
Remove lids and rinse

- NO Foil
- NO Plastic Bags
- NO Paper or Cardboard



Mixed  
Glass / Cans  
Plastics 1 2

### FOOD WASTE



Cut flowers and leaves okay  
Food-soiled non-waxed paper okay

- NO Liquids
- NO Plastic or Metal



Food  
Scraps

### THE REST

Waste



Non-Recyclable

## WHY?

1. So that bottles



become recycled polar fleece



2. So that food waste



becomes compost



3. So that paper waste



becomes new recycled paper

