

## Executive summary

This report reviews the Taranaki Regional Council's performance and achievement on its compliance monitoring functions for the 2005/2006 year. The report also fulfils the Council's statutory obligation under Section 35 of the Resource Management Act 1991 to report to the regional community on its performance in monitoring the exercise of resource consented activities in the Taranaki region.

The monitoring of the level of compliance with the conditions of resource consents continues to be a primary focus of the Taranaki Regional Council.

The report sets out the work undertaken by Council to monitor compliance, and briefly describes the standard of compliance achieved. The report also summarises unauthorised incidents (discharges that did not comply with the conditions of a consent or the rules in the Council's regional plans) investigated by Council during the 2005/2006 year.

Set out below is a summary of the main activities carried out in 2005/2006:

- The Council implemented 207 individual tailored compliance monitoring programmes, involving 236 different resource consent holders with 960 resource consents.
- The 207 compliance monitoring programmes involved 1,249 inspections, 1,480 water and soil samples, 208 air samples, 67 freshwater biological surveys, 30 shellfish surveys and 12 marine ecological surveys.
- The inspections and samplings covered site management, abstraction and discharge quality, and receiving environment (impact) monitoring.
- In 2005/2006, the Council presented annual reports on 80% of the monitoring programmes implemented in the 2004/2005 year, within the Annual Plan performance measure (the March meeting cycle). 98% of all annual reports were completed by the end of the year under review.
- Of the 207 compliance programmes monitored in 2005/2006, 20% showed a high level of environmental performance, and another 72% showed a good level of performance. The combined total of 92% was 5% higher than in 2004/2005, 4% higher than in 2003/2004, 1% higher than in 2002/2003, and 2% higher than that achieved by consent holders in 2001/2002 or in 2000/2001.
- Council officers visited 1,969 dairy farms to inspect effluent treatment systems (100% of all dairy farms in the region), 22 piggeries and 47 poultry farms. Inspections included measurement of various water quality indicators in the effluent and/or receiving waters. Re-inspection of 100 farms (4.9%) was necessary due to failure to satisfy the Council's consent conditions or regional plan requirements.
- Council officers inspected 987 minor industrial operations in 2005/2006. 'Minor' industries include exploration wells, production stations, earthworks, sandblasters and selected land use sites. 48 premises (4.8%) were re-inspected due to failure to satisfy the Council's consent conditions or regional plan requirements.
- In 2005/2006, 618 environmental incidents were registered and investigated by Council officers. 5% related to the marine environment, 58% to fresh water quality, 32% to air quality and 5% to soil.

- Advice and information was provided to resource consent holders and the public on 1,591 occasions. There are 318 operational contingency plans and Council staff reviewed 70 of these in 2005/2006 to ensure they continued to be relevant.
- During 2005/2006 Council officers required 66 explanations from consent holders and others as to why enforcement actions should not proceed as a result of non-compliance. 143 abatement notices and 26 infringement notices were served in relation to unauthorised incidents, with no appeals lodged. The Council resolved to pursue three prosecutions (to be resolved in the 2006/2007 year).
- The Council confirmed 211 individual compliance monitoring programmes in consultation with consent holders, in preparation for the 2006/2007 year. New programmes arise primarily from additional farm irrigation and petroleum exploration and production activity.

## Table of contents

1.	Introduction	1
1.1.	Purpose	1
1.2.	Background	1
1.2.1	Objective	3
1.2.2	Performance measures	3
2.	Report on progress	4
2.1.	Compliance monitoring programmes	4
2.1.1	Tailored compliance monitoring programmes	4
2.1.2	Agricultural monitoring programmes	7
2.1.3	Monitoring programmes for minor industrial operations	7
2.1.4	Other operational matters	8
2.1.5	Advice and information	8
2.2.	Pollution incidents and response	8
2.2.1	Unauthorised Incidents Register	8
2.2.2	Environmental incidents response	11
3.	Conclusion	12
Appendix I	Summary of tailored compliance monitoring programmes 2005/2006	13
Appendix II	Example of a tailored compliance monitoring programme	22
Appendix III	Compliance monitoring programmes	28

## List of tables

<b>Table 1</b>	Sites and activities monitored in 2005/2006 and previous years	6
<b>Table 2</b>	Minor industrial operations inspected 2005/2006	7



## 1. Introduction

### 1.1. Purpose

This report reviews the Taranaki Regional Council's performance and achievements on its compliance monitoring functions for the 2005/2006 year.

### 1.2. Background

The Taranaki Regional Council has responsibility for the management of coastal, air, water and land resources in the Taranaki region, a responsibility derived from the Resource Management Act 1991. These responsibilities include the monitoring and enforcement of resource consents and rules in regional plans under that Act. Consequently, in accordance with section 35 of the Resource Management Act 1991, the Council:

- undertakes compliance monitoring for consents and rules in regional plans; and
- maintains an overview of performance of resource users against regional plans and consents.

Compliance monitoring involves a wide range of activities. It may involve the sampling of discharge and receiving waters (including shellfish in these waters) for chemical, physical, biological, bacterial or viral analysis, groundwater monitoring, soil analyses, vegetation or lichen studies, flow gauges, electric fishing, dye dilution studies, biological surveys of freshwater or marine ecosystems, odour surveys, the sampling and analysis of stack particulate, gas emission or downwind ambient air, and time-lapse video recording of emission or outfall plumes. It may also involve the review of operational, abstraction or discharge monitoring data provided by consent holders, the auditing and calibration of water abstraction systems, and the review of contingency and site management plans.



*Monitoring at the Hawera outfall site*

Compliance monitoring, including impact monitoring, enables the Council to continuously assess its own performance in resource management as well as that of resource users particularly consent holders. It further enables the Council to continually re-evaluate its approach and that of consent holders to resource management, and, ultimately, through the refinement of methods, to move closer to achieving sustainable development of the region's resources.

Compliance monitoring is undertaken to assess if the consent holder is giving effect to the terms and conditions placed on the resource consent, as well as to any applicable rules within any of the Council's regional plans. The monitoring involves assessing any

environmental effects arising from a particular activity and extends to evaluating the on-site performance of the consent holder.

Every activity authorised by a resource consent is monitored to ensure the consent holder is complying with the conditions of that consent. The frequency of that monitoring depends on the scale and potential environmental impacts of the activity. Three types of compliance monitoring programmes are undertaken:

- **Once only compliance inspections:** These are undertaken for consented small-scale activities or for activities that are not likely to have any long term adverse environmental effects e.g. the construction, alteration or installation of a bridge, culvert or small dam. The activity is generally inspected on completion of a specific work programme, or at the beginning of the exercise of a consent to ensure that the consent holder has complied with the consent conditions.



*A Council officer checking the installation of a culvert*

- **Annual inspections:** These are undertaken for consented activities which, while they may cause significant adverse effects, are generally (through appropriate management) not of significant concern. Such activities include discharges of dairy farm, poultry and piggery effluent, and minor industrial discharges from garages, stock saleyards, transport companies, hydrocarbon exploration sites, and cement yards. In general, these activities lend themselves to a standardised inspection procedure, which may occasionally include sampling or more detailed analysis.
- **Tailored site-specific compliance monitoring programmes:** These are undertaken for large or complex consented activities that have the potential for significant adverse effects on the environment, eg, landfills, contaminated stormwater discharges, and industrial discharges to air, land and water.

Tailored compliance monitoring programmes are prepared in consultation with both the consent holder and interested or affected parties, at the time of consent granting. Programmes (including costs) are reviewed annually, taking into account monitoring results and any changes in the consented activity and environmental performance. Wherever possible, the Council will integrate multiple consents held by a single consent holder for a single site, into one comprehensive tailored compliance monitoring programme. For example, the air, land and water discharge consents for a landfill would be covered by a single monitoring programme. Tailored compliance monitoring programmes can also be designed so that adjacent industries are jointly monitored. For example, the Council has a single programme to monitor water quality in the Mangati catchment. Twelve consent holders are jointly monitored under a single programme for efficiency. This approach can also assist in the interpretation of results e.g. where several industries discharge to a single catchment.

As a requirement of section 35 of the Resource Management Act, the Council also gathers and records information on its monitoring, which is available to the public to enable them to be better informed of the Council's duties, functions and powers under the

Resource Management Act. The Council has set in place reporting and recording mechanisms to standardise resource consent information. In particular, alongside the files held by the Council relating to each resource consent, the Council prepares annual or biennial monitoring reports for each tailored compliance monitoring programme, and officers report to the Council on the results of the annual inspection rounds for industrial and agricultural activities.

The enforcement provisions of the Resource Management Act underpin compliance monitoring. There is little point in processing and issuing resource consents if compliance with the consent conditions is not monitored and enforced where required. Accordingly, the Council undertakes enforcement action where necessary. The Council also provides an emergency response service for the Taranaki region to reduce the occurrence and effects of pollution incidents.

### 1.2.1 Objectives

The overall objective for compliance monitoring programmes, as set out in the 2005/2006 Annual Plan, is to:

*“Undertake effective and efficient monitoring of resource consents and, where necessary, undertake enforcement action.”*

The overall objective for pollution incidents and response, as set out in the 2005/2006 Annual Plan, is to:

*“Respond effectively to pollution incidents, reduce the occurrence and effects of pollution and other unauthorised incidents and, where necessary, undertake enforcement action.”*

### 1.2.2 Performance measures

In response to the objective for compliance monitoring programmes, the Taranaki Regional Council adopted the following programmes in the 2005/2006 Annual Plan:

- Design and implement compliance monitoring programmes for major consents within the individual budgets negotiated with consent holders, and publicly report on all programmes by 31 March each year or within nine months of the end of the monitoring period.
- Implement annual programmes for compliance inspections of agricultural discharges and minor industrial operations providing advice to resource users and, where necessary, enforcement actions to ensure compliance with resource consents and/or regional plans.

In response to the objective for pollution incidents and response, the Taranaki Regional Council adopted the following programmes in the 2005/2006 Annual Plan:

- Maintain and publicly report the Council’s *Unauthorised Incidents Register*.
- Respond to all pollution and other complaints within four hours of receipt, instigating control, clean up and enforcement procedures where appropriate.
- Administer and implement the *Taranaki Regional Oil Spill Response Plan* as agreed with Maritime New Zealand.

## 2. Report on progress

### 2.1. Compliance monitoring programmes

#### 2.1.1 Tailored compliance monitoring programmes

The Council designed 211 tailored compliance monitoring programmes for major consent holders for 2005/2006, and implemented 207 programmes. In the four previous years 2001/2002, 2002/2003, 2003/2004, and 2004/2005 the Council implemented 111, 165, 168 and 188 programmes, respectively. A summary of the programmes and the resource consents to which they relate is set out in Appendix I.

Some programmes were not implemented for sites where consents were not exercised, or for sites where monitoring is undertaken on alternative years. The 207 programmes implemented during the year covered 236 resource consent holders, exercising 976 consents. An example of a tailored programme is provided in Appendix II of this report.

In the 2005/2006 year, Council officers conducted 1,249 inspections, collected 1,480 water and soil samples, implemented 67 freshwater and 42 marine biosurveys, and collected 208 air samples. The numbers of compliance monitoring programmes, inspections, water samples, freshwater and marine biosurveys and air samples since the 2000/2001 year are shown in the graph below.

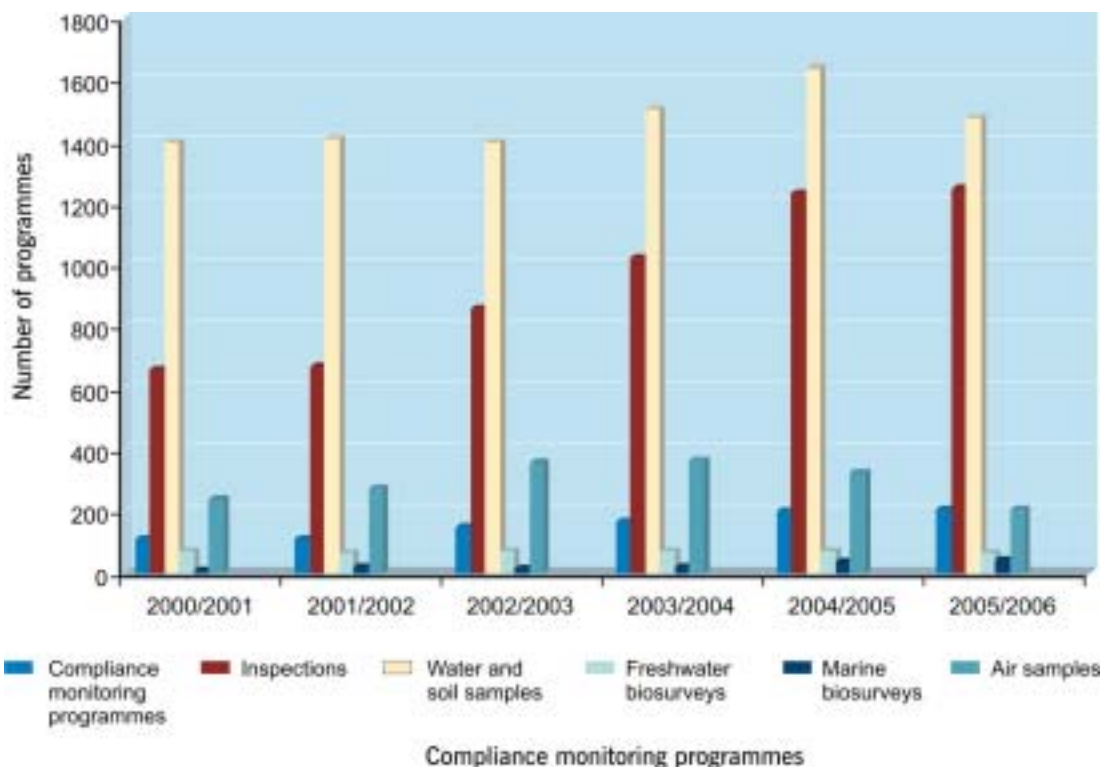


Figure 1: Monitoring trends 2000 – 2006

The tailored compliance monitoring programmes designed and implemented by the Council share the following components:

- **Management and supervision:** Council officers liaised with the consent holder and interested or affected parties with respect to the programme's management and review. A key element of the programmes is that a particular staff member is designated as programme manager, to oversee, assess, and report on the programme, throughout the year. This ensures that the consent holder or members of the public always have a specific point of contact.
- **Compliance monitoring:** Council officers (or on occasion the Council's agent, e.g. a specialist consultant) monitored to ascertain whether regional rules and resource consent conditions were being complied with. Compliance monitoring always included inspections of the premises and consultation with the consent holder's representatives on-site. It also usually included auditing of data and samplings of discharges or emissions to ensure that they met consent conditions.

In accordance with their consent conditions, some larger organisations conducted self-monitoring with respect to their waste-water and air emissions. The collected data was forwarded to the Council and audited. Council officers also audited industrial process methods to ensure that they were capable of meeting consent conditions and reviewed compliance with environmental management plans, such as contingency plans or site stormwater management plans.

- **Impact monitoring:** Council officers undertook impact monitoring, which measured the effects of a consented activity on the receiving environment to ascertain whether rules and consent conditions are given effect. The impact monitoring serves to check whether the environmental effects of the activity were as predicted in the consent granting process.



*Impact monitoring at Port Taranaki*

- **Reporting:** Council officers prepared annual reports for each tailored compliance monitoring programme carried out in the previous year. The Council publicly reported on two programmes for the 2005 calendar year and 64 programmes for the 2005/2006 financial year. This achieved 80% of the Council's performance measure. An additional 15 programmes for the 2004/2005 period were reported on by June 2006. These annual reports set out the environmental monitoring programmes' components for the year in question, the results and findings of the Council's inspections and sampling, any data reported by the consent holder, and provide an overall assessment of the level of the consent holder's environmental and compliance performance. The reports also provide recommendations for any modifications to the monitoring programme, or to site management.

In reporting the results of each consent holder's monitoring programme, Council officers have used for the past five years a rating system that indicates the consent holder's overall environmental performance and compliance, as follows:

- **High** where there are essentially no adverse environmental effects to be concerned about, and no, or trivial, non-compliance with conditions (e.g. a deadline for delivery of results or a contingency plan missed by a few days).
- **Good** where the adverse environmental effects of activities during the year were negligible or minor at most. Items of concern were resolved positively, co-operatively, and quickly, no unauthorised incidents were registered nor abatement notices issued. Some items noted on inspection notices for attention were deemed not urgent or critical, and subsequent follow-up by Council officers showed they had been dealt with.
- **Improvement desirable** indicates that unauthorised incidents were registered or an abatement notice issued. There may have been several instances involving moderate to significant adverse environmental effects, or other matters arising from activities, that required intervention by Council staff. There may have been matters that took some time to resolve or remained unresolved at the end of the period under review.
- **Poor** performance indicates a significant or serious non-compliance issue, to the extent that further enforcement action might be considered.

In the 2005/2006 year, 207 tailored compliance monitoring programmes were implemented and reported in 98 annual reports.

Of the 207 programmes, 41 programmes (20%) showed a high level of environmental performance during the year, and 149 programmes (72%) showed a good level of environmental performance. Of the remainder, in 14 cases (7%), improvement was desirable, while in 2 cases (1%) performance was poor.

Table 1 below identifies the main types of activities, addressed by tailored compliance monitoring programmes. Appendix III of this report identifies specific tailored compliance monitoring programmes by location and type of activity for 2005/2006.

**Table 1:** Sites and activities monitored in 2005/2006 and in previous years

Type of activity	Number of Sites					
	2000/2001	2001/2002	2002/2003	2003/2004	2004/2005	2005/2006
Sewerage	10	10	10	10	10	12
Marine outfalls	3	3	3	3	3	3
Motorcamp and community sewerage systems	4	4	4	4	4	4
Landfills	15	12	15	12	11	16
Cleanfills	10	12	12	12	11	18
Dairy companies	2	2	2	2	2	3
Petrochemical	10	27	31	32	24	28
Meat processing and feedmills	9	10	10	12	6	6
Miscellaneous industry	11	39	30	32	8	10
Abrasive blasting	8	7	4	4*	8	12
Quarries	25	24	23	28	32	29
Water supply schemes	21	21	21	21	45	34
Energy	6	8	9	10	8	7
Abstraction for farm irrigation	0	0	38	28	47	39
Consent holders in the catchment monitoring programmes**	49	54	43	57	55	61
Total number of sites/activities covered by tailored programmes	182	179	255	267	274	302

## 2.1.2 Agricultural monitoring programmes

In 2005/2006 the Council inspected effluent treatment systems on all 1,969 dairy farms in the region. The Council further inspected effluent treatment systems to land or surface water on 22 piggeries and all 47 poultry farms in the region, a total of 2,038 agricultural inspections.

Following these inspections, Council re-inspected 95 dairy farms for failure to meet Council policy, consents and conditions. In addition five piggeries were re-inspected during the year. There were no poultry farm re-inspections.

The re-inspection rate of farms for failure to meet Council policy, consents and conditions was 4.9% for 2005/2006 (4.2% in 2004/2005).

## 2.1.3 Monitoring programmes for minor industrial operations

In 2005/2006, the Council inspected 987 minor industrial operations. 293 of these inspections related to exploration wells and 72 related to production stations. Following these inspections, the Council re-inspected 48 minor industrial operations for failure to meet Council policy, consents and conditions. The re-inspection rate of minor industrial operations for failure to meet Council policy, consents and conditions was 4.8% for 2005/2006 (2.9% for 2004/2005).

Table 2 below identifies the type of industries inspected and the number of inspections and re-inspections pertaining to each industry.

**Table 2:** Minor industrial operations inspected 2005/2006

Minor industrial operation	No. of inspections	No. of re-inspections
Abrasive blasters	27	2
Cement works	11	1
Earthworks	125	18
Exploration wells	293	0
Garage/Workshops	22	7
Garages	2	0
General industry	92	5
Minor industry in the Hongi Hongi/Herekawe catchments	6	0
Light engineering	13	0
Mix-bury cover	20	0
Paint sprayers	20	0
Pipelines	17	2
Port Taranaki	3	0
Production stations	72	0
Quarries	80	4
Retail outlets/farm supplies	8	1
Saleyard	1	0
Sawmills	16	0
Seawalls	25	2
Selected land use sites	7	0
Service stations	1	3

Stocktrucks/carriers	19	0
Swimming pools	1	0
Wellsites	74	0
Workshops	32	3
<b>Total</b>	<b>987</b>	<b>48</b>

#### 2.1.4 Other operational matters

In addition to the matters listed above, Council officers also assisted in the preparation and review of contingency plans and offered advice and information. Outlined below is a summary of these activities.

##### Contingency plans

Contingency plans are an integral tool in the Council's efforts to prevent or mitigate spills. As of 30 June 2006, a total of 318 contingency plans are operational. Of these, 302 are prepared by resource consent holders, as a condition of their consents and another 16 contingency plans have been voluntarily prepared and forwarded to the Council.

In 2005/2006, Council officers reviewed 70 existing contingency plans to ensure they continued to be relevant. A small number of these plans related to sites with more than one resource consent. Council officers also approved 16 new plans during that period.

#### 2.1.5 Advice and information

Advice and information is regularly sought by all sections of the community in relation to discharges to air and to water. The information may range from operation of agricultural waste discharge systems to types of industrial discharge treatment. Advice and information was sought and given on 1,591 occasions throughout the 2005/2006 year.

## 2.2. Pollution incidents and response

### 2.2.1 Unauthorised Incidents Register

In 2005/2006, the Council provided a 24-hour, seven days a week environmental incident response service for the Taranaki region. Environmental incidents include spills and accidents as well as incidents of non-compliance with the conditions of a resource consent or a regional plan. All environmental incidents reported by the public or 'discovered' by Council officers were recorded in the *Unauthorised Incidents Register* (UIR). Summary reports are considered at each Consents and Regulatory Committee meeting.

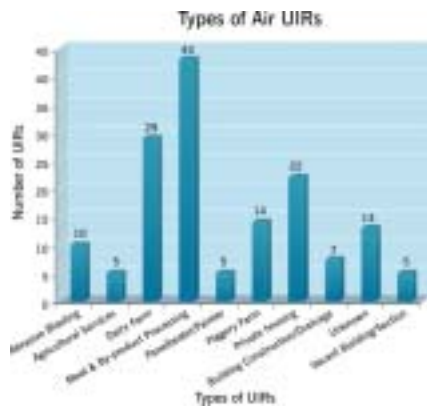
In 2005/2006, 618 environmental incidents were recorded in the UIR (552 in 2004/2005). 56.5% (349) of the environmental incidents were reported by the public, 33% (203) were discovered by Council officers, 5% (32) were self-notified, and 5.5% (34) were third party notification (fire service or district councils etc).

In contrast, the 2004/2005 period saw 59% (325) of the environmental incidents reported by the public, 29% (159) discovered by Council officers, 6%(36) were self-notified, and 6% (32) were third party notification (fire service or district council etc).

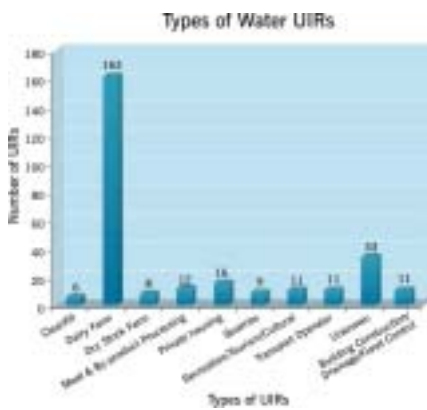
Of the UIRs recorded in 2005/2006, 58% (355) related to incidents affecting fresh water, 5% (31) related to incidents affecting the coastal marine area, 32% (199) related to incidents affecting air quality and 5% (31) related to incidents affecting soil quality.

In contrast, of the UIRs recorded in the 2004/2005, 60% (333) related to incidents affecting fresh water, 3% (18) related to incidents affecting the coastal marine area, 32%(176) related to incidents affecting air quality and 5% (25) affecting soil quality.

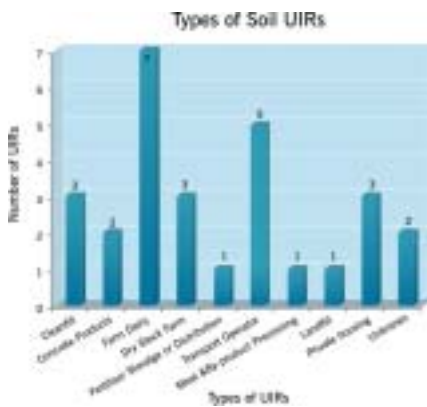
Summarised on the next page is a description of the type and source of incidents recorded on the UIR in 2005/2006 relating to air, water, soil and the coastal marine area.



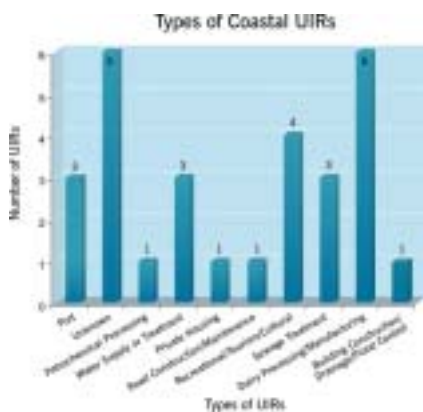
**Air:** During 2005/2006, 22% (43) of the unauthorised incidents relating to air were associated with meat and by-product processing (compared with 27% in 2004/2005) and 15% (29) related to dairy farming. Other unauthorised incidents relating to air were associated with abrasive blasting, building construction/drainage, and piggery farming activities.



**Water:** 46% (163) of the unauthorised incidents relating to water were associated with dairy farm discharges. Other significant contributors were meat and by-product processing, private housing and transport operators. Approximately 9% (33) of the UIRs relating to water could not be sourced or were a result of natural causes.



**Soil:** 23% (7) of the unauthorised incidents relating to soil were associated with dairy farming activities and 16% (5) were associated with transport operators. Other unauthorised incidents were associated with cleanfill activities, dry stock farming and private housing activities.



**Coastal:** 5% (31) of the unauthorised incidents were recorded in the coastal marine area (compared with 0.23% in 2004/2005). 19% (6) of the unauthorised incidents were associated with dairy processing/manufactures, while recreation/tourism/cultural contributed to a further 13% (4).

## **2.2.2 Environmental incidents response**

In 2005/2006, Council officers responded to all pollution and other complaints within the required timeframe. All pollution and other complaints were investigated by Council officers and, where appropriate, officers instigated control, clean-up or appropriate enforcement action. There were two significant pollution events in the Taranaki region in 2005/2006:

- A spill of tallow into the Tasman Sea from a burst pipe at the Newton King Wharf at Port Taranaki. Tallow was washed up onto approximately 600 metres of Ngamotu Beach. An infringement notice was issued as a result of the investigation into this incident.
- A discharge of approximately 5,000 litres of cream from the Fonterra Whareroa site in Hawera through the outfall into the Tasman Sea. Cream was washed up along approximately six kilometres of Ohawe Beach. A successful prosecution was pursued as a result of the investigation into this incident.

As a result of investigation of unauthorised incidents, Council officers can take enforcement action in the form of an abatement notice, infringement notice or prosecution. Council officers also require a letter of explanation from consent holders and others as to why enforcement action should not proceed as a result of a non-compliance. The letters are called 14-day letters and are an informal component of an enforcement system. An enforcement procedures guide, adopted by the Council assists senior officers in their assessment of the 14-day letters. During the year 66 14-day letters were sent to consent holders and others. It can be noted the number of infringement notices and prosecutions are much lower than the number of letters showing that there can be reasonable circumstances where non-compliance can occur.

### **Abatement notices**

Council officers served 143 abatement notices in 2005/2006 year in relation to unauthorised incidents (149 served in 2004/2005). Of the abatement notices issued, 103 were in relation to fresh water, one to coastal resources, four to air and seven to land. Dairy farming continues to dominate the issue of abatement notices. There were no appeals lodged against any Council abatement notice in 2005/2006.

### **Infringement notices**

Infringement notices provide the Council with the ability to serve an instant fine for relatively minor offences. Infringement notices can also provide an alternative to prosecution. There were 26 infringement notices served in relation to unauthorised incidents in the year, with no notices appealed (8 served in 2004/2005). One notice was withdrawn.

### **Prosecutions**

In August 2005, one prosecution from the 2004/2005 year was successfully resolved. This related to the discharge of objectionable odour off-site. In 2005/2006, the Council resolved to pursue three prosecutions. These related to the non-compliance of an enforcement order, the discharge of contaminant (cream) to water and land; and the discharge of objectionable odour off-site (both to be resolved in the 2006/2007 year).

### **3. Conclusion**

In summary, the Council has met its performance measures for compliance monitoring activities set out in the 2005/2006 Annual Plan. The Council presented annual reports on 80% of the monitoring programmes implemented in the 2004/2005 year, within the Annual Plan performance measure (the March meeting cycle). 98% of all annual reports were completed by the end of the year under review. Compliance monitoring programmes and Council responses to unauthorised incidents confirmed that the majority of resource consent holders complied with the conditions of their consent and/or their obligations under the Resource Management Act. In instances of non-compliance, the Council took the appropriate action including, when necessary, enforcement action.

The overall level of resource consent compliance was high. 95% of the agricultural operations inspected and 95% of the minor industrial operations inspected complied with their consent conditions and Council requirements. During 2005/2006 the number of unauthorised incidents recorded increased by 11% to 618 from 552 in 2004/2005. The number of abatement notices issued decreased by 1% to 143, from 149 in 2004/2005. A consistent approach has been applied to serving abatement notices for non-compliance after one warning being given on an inspection notice.

This report will be forwarded to key interested stakeholders for compliance monitoring management.

Appropriate and consistent enforcement action contributes to the sustainable community outcome.

## **Appendix I**

### **Summary of tailored compliance monitoring programmes 2005/2006**

Consent holder	Programme	Site Activity	Consents	Changes or events during 2005/2006
<i>Municipal Sewerage</i>				
STDC	Hawera	Oxidation ponds	1	variation to consent still being processed; overflows to stream being investigated; consent holder still not supplying requisite data.
	Kaponga	Oxidation ponds	1	Consent expired; renewal being processed
	Manaia	Oxidation ponds	1	Continued effects on stream receiving waters ;consent renewal being processed
	Patea	Oxidation ponds	3	Consents all renewed during period; no overflows from pump station
	Waverley	Oxidation ponds	1	
	Eltham	Oxidation ponds + landfill	3	Continuing effects on receiving waters; diversion to Hawera ponds application still being processed; desludging of pond proposed.
	Opunake	Oxidation pond, land infiltration + discharge to stream	1	
	Emergency discharge from Opunake		1	Upgrade delayed but underway; 7 overflow events
NPDC	Inglewood	Oxidation ponds	1	No overflows.
SDC	Stratford	Ponds + landfill	4	No overflows, consent renewal continues
Stratford Mountain House	Egmont National Park	Septic tank	3	
Dawson Falls	Egmont National Park	Septic tank		
DOC	Egmont National Park	Septic tank		
<i>Marine Discharges</i>				
NPDC	NPWWTP	Wastewater treatment + marine outfall	7	
	Urenui, Onaero motor camps	Septic tank + infiltration trenches	2	
NPDC, Methanex	Waitara Marine Outfall	Wastewater treatment + marine outfall	5	
Methanex Motunui and Waitara Valley plants	Methanex Motunui and Waitara Valley including Motunui groundwater	Methanol Production	17	Motunui plant not operating. Variation to consent 0820 on 15/11/05.
Wai-iti beach	Wai-iti beach motor camp	Septic tank + infiltration trenches	1	
STDC	Wai-inu beach camp	Septic tank + infiltration trenches	1	
<i>Landfills</i>				
SDC	Pukengahu	Landfills closed	2	
	Huiroa			

Consent holder	Programme	Site Activity	Consents	Changes or events during 2005/2006
NPDC	Colson Rd	Landfill open	8	
	Inglewood	Landfill open	3	
	Okato	Landfill open	3	
	Okoki	Landfills closed	1	
	Marfell/Oakura	Landfills closed	2	
	Waitara	Landfill closed	1	
STDC	Eltham/Central	Landfill proposed	5	
	Kaponga	Landfill closed	1	
	Hawera	Landfill closed	2	
	Opunake	Landfill closed	1	
	Patea	Landfill open	3	
	Otakeho	Landfill closed	1	
	Manaia	Landfill open	3	
<i>Cleanfills</i>				
Various	Cleanfill programme	Cleanfill	23	
H G Cudby	Cleanfill programme	Cleanfill	3	
STDC	Patea Beach	Green waste	1	
<i>Dairy processing</i>				
NZMP Kapuni	NZMP Kapuni	Dairy processing (air + water)	18	Application for variation of consent 0923 to extend irrigation area Applications to provide for spill detention pond
NZMP Whareroa	NZMP Whareroa	Dairy processing (air + water)	22	
Taranaki Milk Products	Taranaki Milk Products	Dairy processing (water)	1	Application for variation on conditions of consent on 15/10/05 – on hold
<i>Hongihongi and Herekawe catchments – New Plymouth</i>				
Liquigas	HongiHongi/ Herekawe	Distribution/storage	1	
Fonterra		Distribution/storage	2	
Kaneb Terminals Limited		Distribution/storage	1	
STOS - deballast		Wastewater treatment	1	
- Omata tank farm			1	
- Omata tank farm (ex-FCE)		Distribution/storage	1	
- Paritutu tank farm		Distribution/storage	1	
- pipeline			1	
Methanex Motunui				
- deballast		Wastewater treatment	0	
- Omata		Storage	0	
- Methanol tanks – Omata		Distribution/storage	1	
- Methanol tanks – Port			1	
NZ Oil Services		Distribution/storage	1	
Kaneb Terminals Limited		Distribution/storage	1	
Mobil NZ Ltd		Distribution/storage	1	

Consent holder	Programme	Site Activity	Consents	Changes or events during 2005/2006
<i>Kahouri catchment</i>				
Taranaki Abattoir Co	Kahouri	Meat & byproduct processing	5	Application for new consent 0108 on hold
Egmont Tanneries Ltd		Tannery	4	
Transpower NZ Ltd		Power generation	1	
Contact Energy Ltd (old station)		Power generation	1	
Contact Energy Ltd (CCPS; previously Stratford Power Ltd)		Power generation	5	Name changed on consent during year
Firth Industries Ltd		Concrete products	1	
Ballance Agri Nutrients		Fertiliser storage	1	
Taranaki Galvanisers Ltd		Metal processing	2	
<i>Lower Waiwhakaiho catchment – New Plymouth</i>				
Ravensdown	Lower Waiwhakaiho	Fertiliser storage	2	
Firth Industries		Concrete products	1	Consent transferred 17/02/06
Hooker Brothers		Distribution storage	1	
NPDC (Stormwater)		Municipal stormwater	3	
NPDC (Bewley Road)		Closed landfill	1	
TranzRail		Distribution storage	2	Consent 3528 transferred to Toll NZ Consolidated on 09/03/06
PCL Industries		Feedmill	1	
Allied Concrete Ltd		Concrete products	1	
Taranaki Sawmills		Timber treatment	1	Application to renew consent on hold
Technix Group		Engineering	3	
Works Infrastructure		Asphalt & bitumen processing	1	
<i>Lower Waiwhakaiho air monitoring</i>				
Clelands Timber	Lower Waiwhakaiho	Timber processing	1	
Fitzroy Engineering		Abrasive blasting	1	Application to renew consent on hold
PCL		Feedmill	1	
Ravensdown		Distribution	1	
Katere Surface Coatings		Abrasive blasting	1	
Taranaki Drum and Pallet		Recycling	1	
Works Infrastructure		Asphalt & bitumen processing	1	
<i>Mangati catchment – Bell Block</i>				
ABB Transformer Ltd	Mangati	Metal processing	2	
Clark & Rodgers		Storage distribution	1	
Corrocoat		Abrasive blasting	1	
Mainland Products		Dairy processing	1	
MCK Metals Pacific		Metal processing	1	
NPDC		Municipal stormwater	1	
NGC NZ Ltd		Admin and workshop	1	
Olex Cables		Communication	2	

Consent holder	Programme	Site Activity	Consents	Changes or events during 2005/2006
Halliburton New Zealand Ltd		Petroleum exploration industry	1	
Greymouth Petroleum		Petroleum exploration industry	1	
Tasman Oil Tools		Petroleum exploration industry	1	
Tegel Foods		Feedmill, meat processing	5	
MI New Zealand		Liquid mud plant	1	
Schlumberger Seaco Ltd		Petroleum exploration industry	1	
<i>Waitaha catchment – Bell Block</i>				
NPDC	Waitaha	stormwater	2	
Dynea		Chemical process	2	
Taranaki Sawmills		Timber treatment	2	
Onyx		Distribution storage	2	
C&O		Concrete products	1	
Weatherford NZ Ltd		Petroleum exploration industry	1	
Parker Drilling		Petroleum exploration industry	1	
Taranaki Nuchem		Chemical process	1	
TBS Coatings Ltd		Blast & paint	1	
<i>Petrochemical and petroleum recovery</i>				
Todd Taranaki Ltd	McKee	Hydrocarbon production	10	Including Mangahewa All consents transferred from STOS to Todd Taranaki Ltd on 31 May 2006
Greymouth Petroleum	Kaimiro		4	New consent (6218) for sand storage
Swift Energy NZ Ltd	Waihapa		6	
	Rimu		5	
Methanex Waitara Valley	Methanex	Petrochemical	2	
Westech Energy New Zealand	Surrey Production Wells	Hydrocarbon production	3	
NGC NZ Ltd	NGC Kapuni	Gas treatment	12	Progress on hydrometric site to enable Kapuni weir removal and fish passage
Ballance Agri Nutrients	Ammonia Urea Plant Kapuni	Petrochemical	8	Normal operation
STOS	STOS – Maui & Kapuni	Petrochemical process	13	Consent 4052 varied 26 August 2005
STOS		Deep well injection	15	
Swift Energy NZ Ltd		Deep well injection	16	
Greymouth Petroleum		Deep well injection	2	
Austral Pacific Energy		Deep well injection	1	
Solexin Industries	Solexin	Chemical process	2	Not exercised
Swift Energy NZ Ltd	Kauri C	Land treatment	1	

Consent holder	Programme	Site Activity	Consents	Changes or events during 2005/2006
Swift Energy NZ Ltd	Land treatment and Mix-Bury-Cover	Land treatment & Mix-bury-cover sites	25	New consent 6722 issued 26 October 2005, 6674 issued 4 August 2005, 6850 issued on 6 April 2006, 6857 issued on 3 April 2006. Consent 5956 varied 1 November 2005, 5520 surrendered on 1 February 2006
Todd Pohukura Ltd	Terrace A	Land treatment	1	New consent 6698 issued 31 August 2005
Perry Environmental Ltd	Mokau Rd, Uruti	Composting	5	
Perry Environmental Ltd	Pennington, Waitara and Manutahi Roads	Composting	3	Consents expired in June 2006- currently in process of renewing 5893 and 5894 with 5892 being renewed with a change to the purpose
R & S Geary		Land treatment	4	Consent 6297 for OBM renewed
Greymouth Petroleum	Landfarm	Land treatment	1	Consent varied
Swift Energy NZ Ltd	Manutahi	Land treatment	1	New area started
G Symons		Land treatment	2	
STOS	Land Treatment and MBC	Land Treatment	8	Consents 5050, 4703, 5544, 5563, 5114, 5038 and 5028 transferred to Todd Taranaki Limited on 31 May 2006.
Shell Exploration New Zealand Ltd	Pohokura Project	Construction	24	2 new consents. All consents transferred to Shell
<b>Industry</b>				
Cheswood Estate New Zealand Ltd	Cheswood Estate	Liqueur manufacturing	1	
Dow AgroSciences NZ Ltd	Dow AgroSciences	Chemical process	2	Manufacture of 2,4-D ester recommenced
Kibbys Metal Pressing Ltd	Kibbys Metal Pressing Ltd	Metal process	1	Programme discontinued. HSNO inspections carry on.
MCK Metals Pacific Ltd	MCK Metals Bell Block	Metal process	3	Renewal of consent 1857 on hold
Osflo Spreading Industries	Osflo Spreading Industries	Fertiliser	2	
Pacific Natural Gut String Company	Pacific Natural Gut String Company	Gut processing	1	
Paradise Abalone Ltd	Paradise Abalone Ltd	Aquaculture	2	
Rainbow Abalone Ltd	Rainbow Abalone Ltd	Aquaculture	3	Closed down
Taranaki Aquaculture	Taranaki Aquaculture	Aquaculture	2	Not operating
Westgate Transport Ltd and Bitumen Supplies Ltd	Port Taranaki	Port	2	
Westgate Transport Ltd	Dredging consents	Dredging	3	
<b>Meat processing/Feed Mills</b>				
Graeme Lowe	Graeme Lowe Protein	Byproduct process	2	
PPCS Limited	Richmond Hawera Ltd	Abattoir and meat processing	6	All consents transferred from Richmond Ltd to PPCS Limited on 15 May 2006
Riverlands Eltham Ltd	Riverlands Eltham Ltd	Meat & byproduct processing	10	Final ponds desludged. Consent 5436 under review
Taranaki By-Products Ltd	Taranaki By-Products Ltd - water	Byproduct processing	12	Consent 3941 reviewed and changed for more land disposal. Consent 2049 under review.

Consent holder	Programme	Site Activity	Consents	Changes or events during 2005/2006
Taranaki By-Products Ltd	Taranaki By-Products Ltd - air	Byproduct processing	1	Consent 4058 under review.
PPCS Ltd	Richmond Ltd (Waitotara)	Meat & byproduct processing	4	Consents transferred to PPCS Ltd on 18 May 2006
<i>Blasting Related - Air</i>				
Energyworks Ltd	Inglewood Blasting and Painting Ltd	Blasting	1	Consent transferred to Energyworks Ltd on 20 January 2006
<i>Energy</i>				
Contact Energy	NP power station-water	Power generation	9	
Contact Energy	NP power station-air	Power generation	2	
NZ Energy	Waiaua HEP	Power generation	8	Application to renew consent 1795 is on hold; draft officers report completed, waiting for approvals from affected parties
Trustpower – Taranaki Generation	Lake Rotorangi	Power generation	2	>500000 eelers transferred over summer; two adult eel migration spillway releases
Trustpower – Taranaki Generation	Below Dam	Power generation	6	Lower river biomonitoring survey
Trustpower – Taranaki Generation	Mangamahoe	Power generation	6	Residual flow remote sensor recalibrated late in period; permanent access culvert installed and consented.
Trustpower – Taranaki Generation	Motukawa	Power generation	23	Fish pass and residual flow working well
Contact Energy Ltd	Combined cycle power station	Power generation	18	Seven new consents for scheme upgrade granted for Mangaotea Stream abstraction. New race generator now installed, with change to consent conditions re fish screening currently under application
Contact Energy Ltd	Combined cycle power station	Power generation	18	Consents transferred from Stratford Power Ltd on 4 July 2005. Change in water treatment chemical supplier
<i>Water take and discharges</i>				
NPDC	Lake Mangamahoe	Water supply and treatment	5	New consent 6643 issued 1 August 2005 for existing dam/weir on Mangorei Stream. Consent 5821 renewed 14 December 2005.
	Waitara		3	Consent 0126 renewal on hold since 02-03
	Inglewood		5	
	Urenui		1	
	Oakura		4	
	Okato		2	
NPDC	Aquatic Centre	Swimming Pool	2	
STDC	Waimate Kaupokonui	Water supply and treatment	8	Consent 0129 renewed 12 June 2006. consent 4446 renewed 9 June 2006. 0634 and 0635, renewals on hold.
	Hawera - Kapuni		3	Consent 0933 renewed on 26 January 2006. New discharge limits unable to be met by STDC- UIR issued.
	Inaha		7	Consents 1185, 1186, renewals on hold.
	Eltham Waingongoro		4	
	Patea - Patea		4	
	Opunake - Waiaua		2	

Consent holder	Programme	Site Activity	Consents	Changes or events during 2005/2006
	Cold Creek rural supply		3	Regularly exceeding abstraction limit of consent 1134, preparing application for review
	Oaonui rural supply		2	
	Nukumarū rural supply		2	New consent 6451 issued 20 October 2004
	Waiinu Beach		1	
	Rahotu - Pungaereere		2	Application to increase abstraction limits received and later withdrawn.
	Waverley - Whenuakura		2	
SDC	Midhirst - Te Popo	Water supply and treatment	2	
	Stratford - Patea		6	
	Toko - bore		2	
<i>Pasture irrigation</i>				
49 individual consent holders		Water supply	49	See doc 53639 for 2005-06 names/details/#exercised in 2005-06
<i>Quarries</i>				
AA Contracting	Kaipī Road	Quarries	2	Consents 4998 & 5181 surrendered Feb-05
AA Contracting	Te Arei Road		1	nil
RC Bell	RC Bell, Eltham		1	nil
DM Bourke	DM Bourke, Normanby		1	nil
CD Boyd Quarry	Norfolk Rd, Inglewood		1	Consent for new site commenced 8-6-05
Brian Crawford Contracting	Upper Newall Rd		1	Consent for new site commenced 3-2-05
Burgess & Crowley Ltd	East Rd		1	nil
Egmont Stone Ltd	Egmont Stone, Urenui		1	nil
D & L Crow Ltd (ex Freight & Bulk Transport Holding)	Saunders Road		2	Transferred to D&L Crow 2-8-05.
Ferndene Quarries Ltd	Upland Rd, Inglewood		1	Consent for new site commenced 16-9-04
Hurlstone Earthmoving Ltd	Upper Egmont Rd		1	nil
Hurlstone Earthmoving Ltd	Kaipī Rd Quarry		2	Increased level of monitoring
Inglewood Metal Ltd	Everett Rd		1	Riparian improvements; quarry size increasing.
GR & LJ Jones	Mahoetahi Rd, Brixton		1	nil
Murray Brothers Ltd	Manaia		1	nil
New Plymouth Quarries	Waiwhakaiho Rd & Hydro Rd		5	Persistent non-compliances recorded-abatement notice/s issued
A Pennington	A Pennington, Uruti		1	Site inactive 05-06. Consent surrendered 26-9-05
M Purvis	Victoria Road, Stratford		1	
River Island Shingle Co Ltd	Waitara		3	Site used as metal stockpile depot only in 05-06. Consents to be held.
Sandford Quarries Ltd	Skeet Rd, Auroa		2	Consent surrendered 3-1-02
South Road Quarries Ltd	Tokaora	4	Consent for new cleanfill commenced 22-7-04	
Surf Highway Excavations	Kahui Rd, Rahotu	1	Consent for new cleanfill commenced 26-4-05	
Sybrandy A	Kapuni	1	Application to change consent 6063 on hold 10-11-05	

Consent holder	Programme	Site Activity	Consents	Changes or events during 2005/2006
Taranaki Trucking Co Ltd	Kaponga		1	nil
Taranaki Trucking Co Ltd	Wiremu Rd, Opunake		2	Level of monitoring increased
Taranaki Trucking Co Ltd	Cardiff		3	
L Taunt	Bird Rd, Stratford		1	nil
Gully Rock Ltd (ex Tutira Holdings)	Urenui		2	Transferred to Gully Rock 6-4-05.
Vickers Quarries	Toko		1	nil
Vickers Quarries	York Rd, Midhirst		3	Biomonitoring survey performed May-06
RA Wallis Ltd	RA Wallis, Kaponga		1	Air disch consent 4763 surrendered 22-2-05. Site fully reinstated & now used as stockpile depot only. Stmw consent retained.
RA Wallis Ltd	RA Wallis, Matapu		1	nil
RA Wallis Ltd	RA Wallis, Okaiawa		1	nil
Winstone Aggregates Ltd	Wiremu Rd, Opunake		2	nil
<i>Other</i>				
NPDC	Crematorium	Crematorium	1	Consent 5205 changed for old diesel cremator replacement on 13 July 2005
NPDC	Coastal structures		18	
STDC	Coastal structures	Seawalls	4	
	Pools	Pool		
SDC			1	
Stfd High School			1	
STDC			2	
Pungarehu Community			1	
NPGHS			1	

## **Appendix II**

### **Example of a tailored compliance monitoring programme**



Equipment Hire: 2 x \$200 \$400

**Subtotal water quality \$1,318**

### Inspections

Twelve random monthly inspections. Check fish pass to ensure that it is not blocked and to estimate residual flow. Record time and reading from staff gauge in race, to confirm accuracy of Trustpower's ultrasonic sensor [3369(2)].

**NOTE:** Frequency of inspections will depend on whether a electronic residual flow device is installed to monitor the flow in the fish pass. If a device is installed the frequency of inspections can be decreased.

Technical Officer: 18 hrs @ \$51/hr \$918

### Hydrology

Three gaugings to assess compliance with the residual flow in fish pass [3369(1) & (2)]. (*For the Mangaotea Stream, if required additional gaugings will be charged separately.*)

Technical Officers: 12 hrs @ \$51/hr \$612

### Freshwater biology

#### Streambed community surveys

One macroinvertebrate survey (summer) above and below the weir at four sites in the Manganui River (Sites: MGN000300, MGN000320, MGN000360 and MGN000375) [3369].

Scientific Officer: 1 x 14 hrs @ \$66/hr  
Technical Assistant: 1 x 12 hrs @ \$51/hr \$1,536

#### Fish assessment work

Fish monitoring will be conducted to assess the fish pass and eel and elver migration facilities.

#### *Manganui River Weir*

- Assessment of fish pass/residual flow effectiveness through electric fishing and/or night spotting above and below the Manganui weir at seven sites on one occasion [consent condition 3369], including 2 sites higher in the Manganui River catchment.

Scientific Officers: 2 x 2 hrs x 7 @ \$66/hr \$1,848  
Technical Officer: 1 x 2 hrs x 7 @ \$51/hr \$714  
Equipment hire: \$100

- Assessment of electric field barriers at intake gate on Manganui River [5080(3)]. Possibility of releasing eels captured during fish monitoring to assess response to barrier;

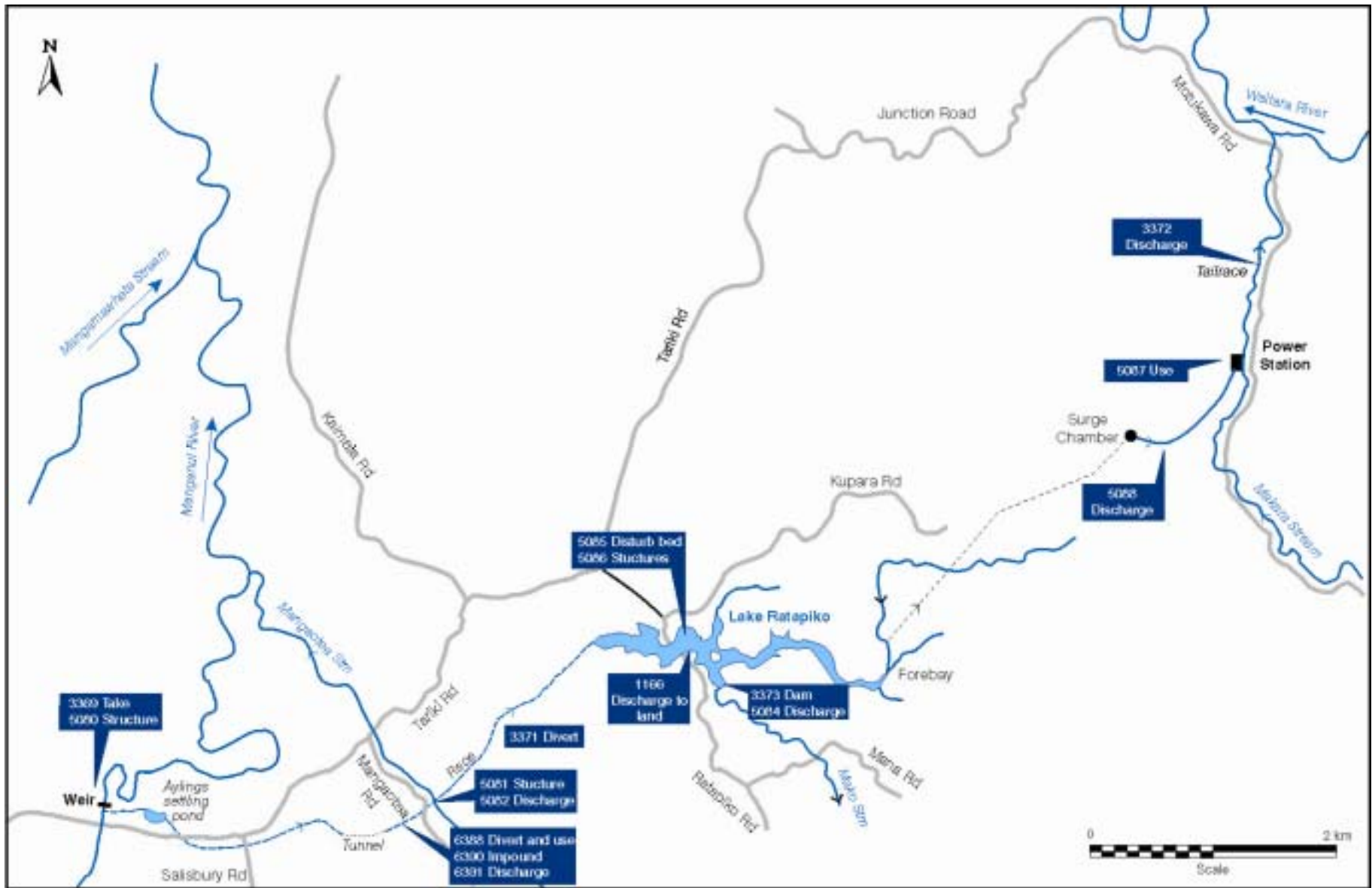
	Scientific Officers: 2 x 2 hrs @ \$66/hr	\$264
	<ul style="list-style-type: none"> <li>• <i>Inspection of residual flow in race during maintenance work [3369(6)]. Included only if maintenance work is undertaken during the year.</i></li> </ul>	
	Scientific Officer: 1 x 2 hrs @ \$66/hr	\$132
	<i>Mako Stream Spillway</i>	
	<ul style="list-style-type: none"> <li>• Night spotting at elver pass over dam on Mako Stream in summer [3373(8)];</li> </ul>	
	Scientific Officer: 1 x 3 hrs @ \$66/hr	\$198
	<ul style="list-style-type: none"> <li>• <u>Either</u>: assessment of eel passage at spillway to Mako Stream on wet autumn night [3373(8)]; <u>Or</u>: evaluation of migrant eel trapping records provided by consent holder</li> </ul>	
	Scientific Officer: 1 x 2 hrs @ \$66/hr	\$132
	<i>Power Station</i>	
	<ul style="list-style-type: none"> <li>• Two inspections for the assessment of elver passage facilities (trap and transfer) at the power station in summer [3372(3)];</li> </ul>	
	Scientific Officer: 2 x 2 hrs @ \$66/hr	\$264
	<ul style="list-style-type: none"> <li>• One inspection for the assessment of electric field barriers at penstock intake screens of power station [5086(2)] (in combination with barriers at intake gate of Manganui River – <i>costs included in intake monitoring</i>);</li> </ul>	
	<b>Subtotal Freshwater biology</b>	<b>\$5,056</b>
<b>Data review</b>	Assess abstraction [3369(3)]; discharge [3372(2)], lake level [3373(9)] and fish passage data supplied by consent holder (including flow and monitoring data from Mangaotea Stream).	
	Technical Officer: 16 hrs @ \$51/hr	<b>\$816</b>
<b>Annual report</b>	Preparation of a report to the Taranaki Regional Council discussing the results of monitoring and making recommendations	
	Scientific Officer: 50 hrs @ \$66/hr	<b>\$3,300</b>
<b>Cost summary</b>	Supervision	\$1,302
	Water Quality	\$1,318
	Inspections	\$918
	Hydrology	\$612

Biological Surveys	\$5,056
Data review	\$816
Annual Report	<u>\$3,300</u>
<b>TOTAL COST (excluding GST)</b>	<b>\$13,332</b>

**Notes:**

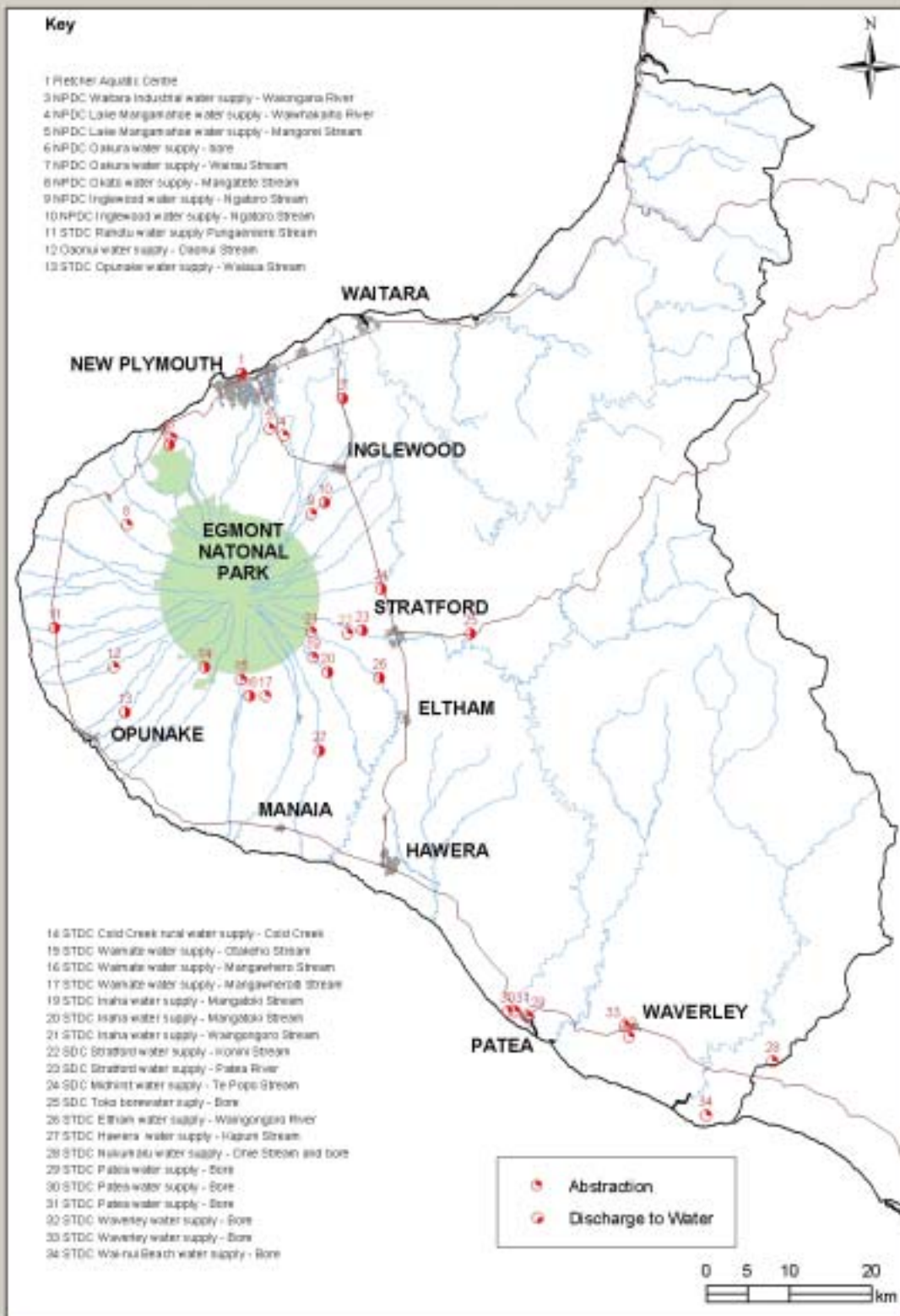
1. Should follow-up to any compliance monitoring or unforeseen event requiring the attention of the Taranaki Regional Council staff, the costs associated with those staff and investigations will be billed separately and in addition to this compliance monitoring programme.
2. Should lake dredging occur then additional inspections and biological monitoring will be required.
3. The requirements for streambed community surveys will be reassessed once a new residual flow has been established.
4. If additional monitoring in relation to the Mangaotea Stream abstraction is required (and is not included in this programme), this will be included as an additional cost to this monitoring programme.

TrustPower – Motukawa Power Scheme: Resource consent locations

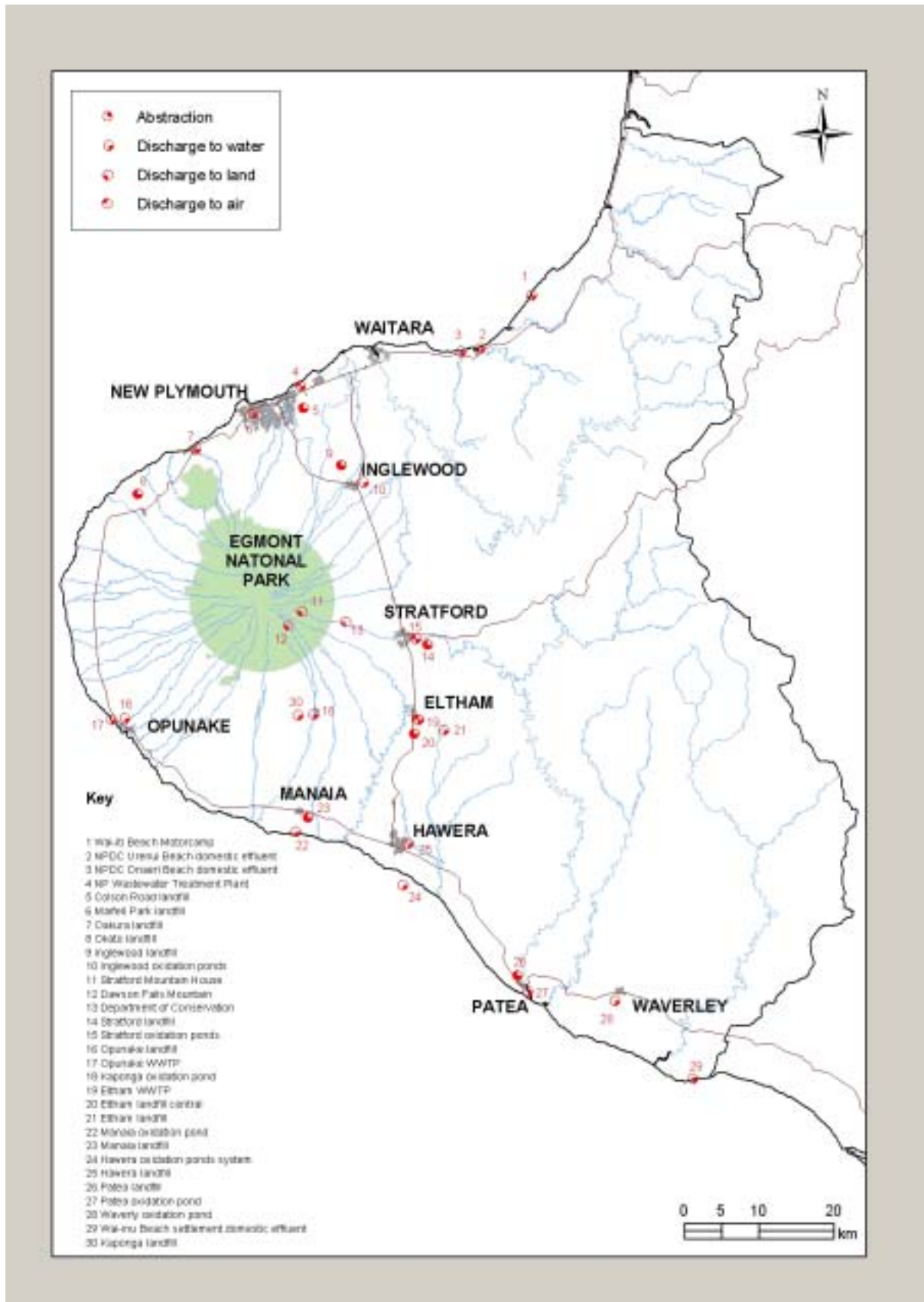


## **Appendix III**

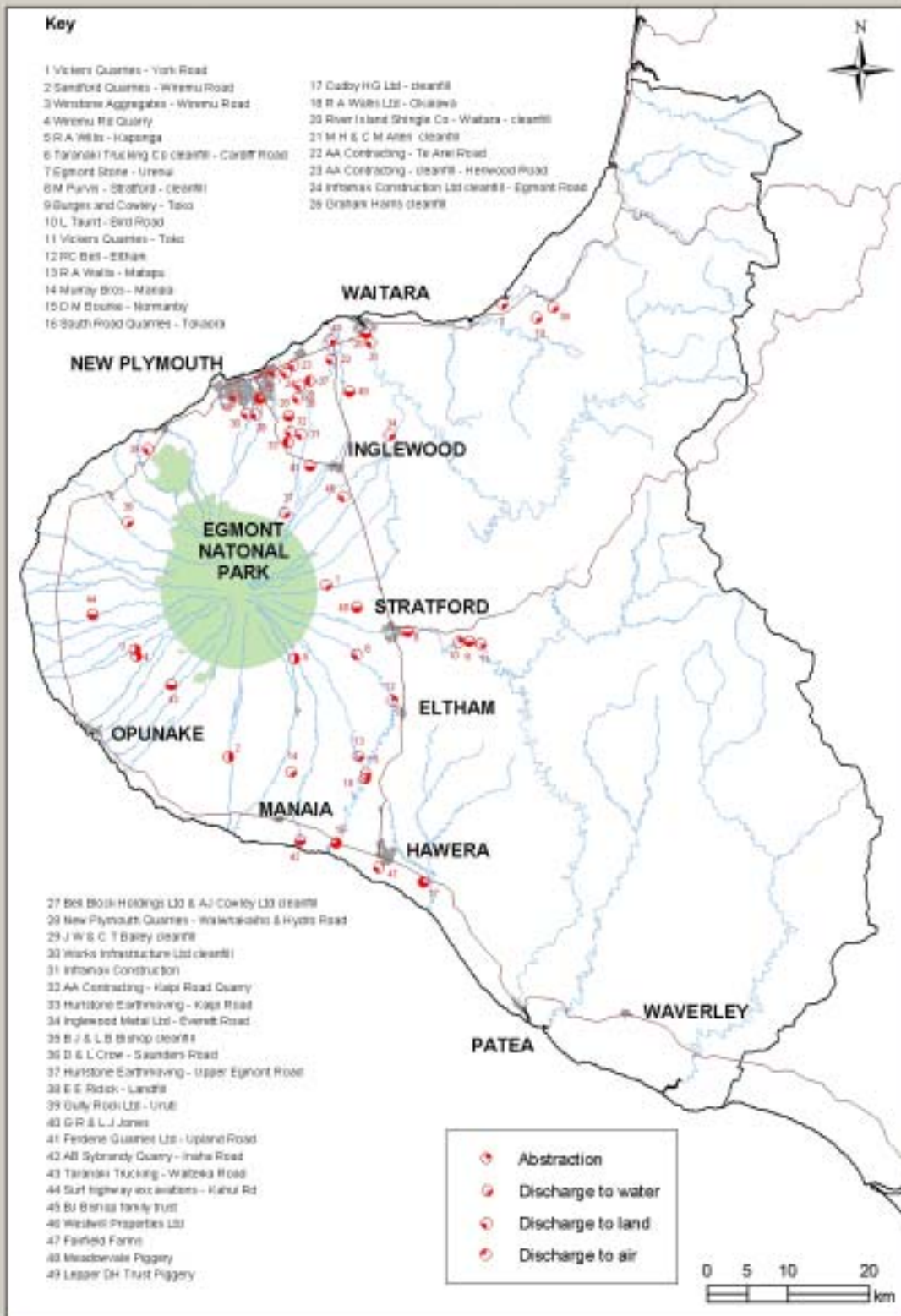
### **Compliance monitoring programmes**



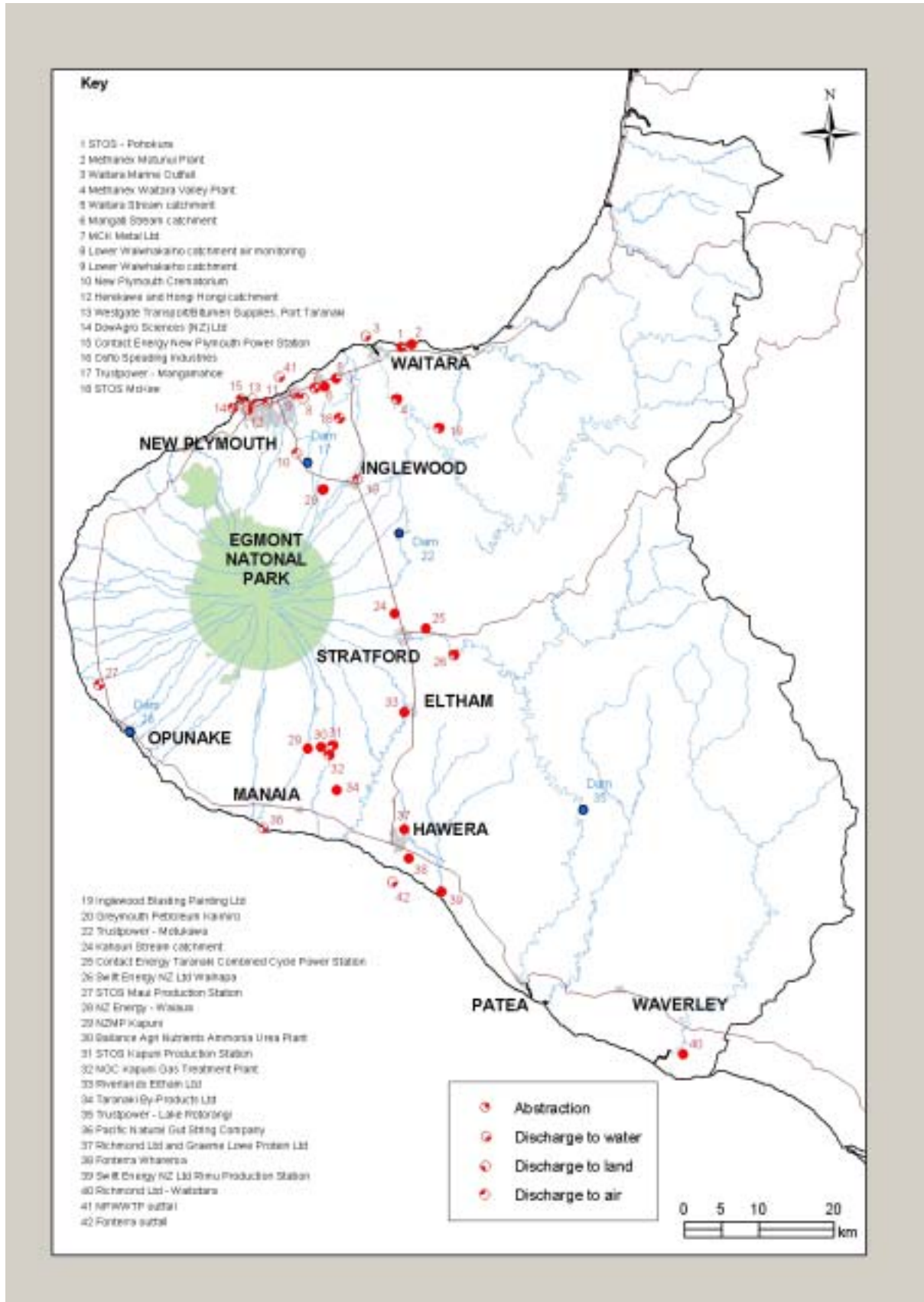
Activities monitored via a tailored monitoring compliance programme 2005/2006 – water takes



Activities monitored via a tailored monitoring compliance programme 2005/2006 – landfills and sewage disposal.



Activities monitored via a tailored monitoring programme 2005/2006 – quarries and cleanfills



**Activities monitored via a tailored monitoring compliance programme 2005/2006 - other industrial activities**